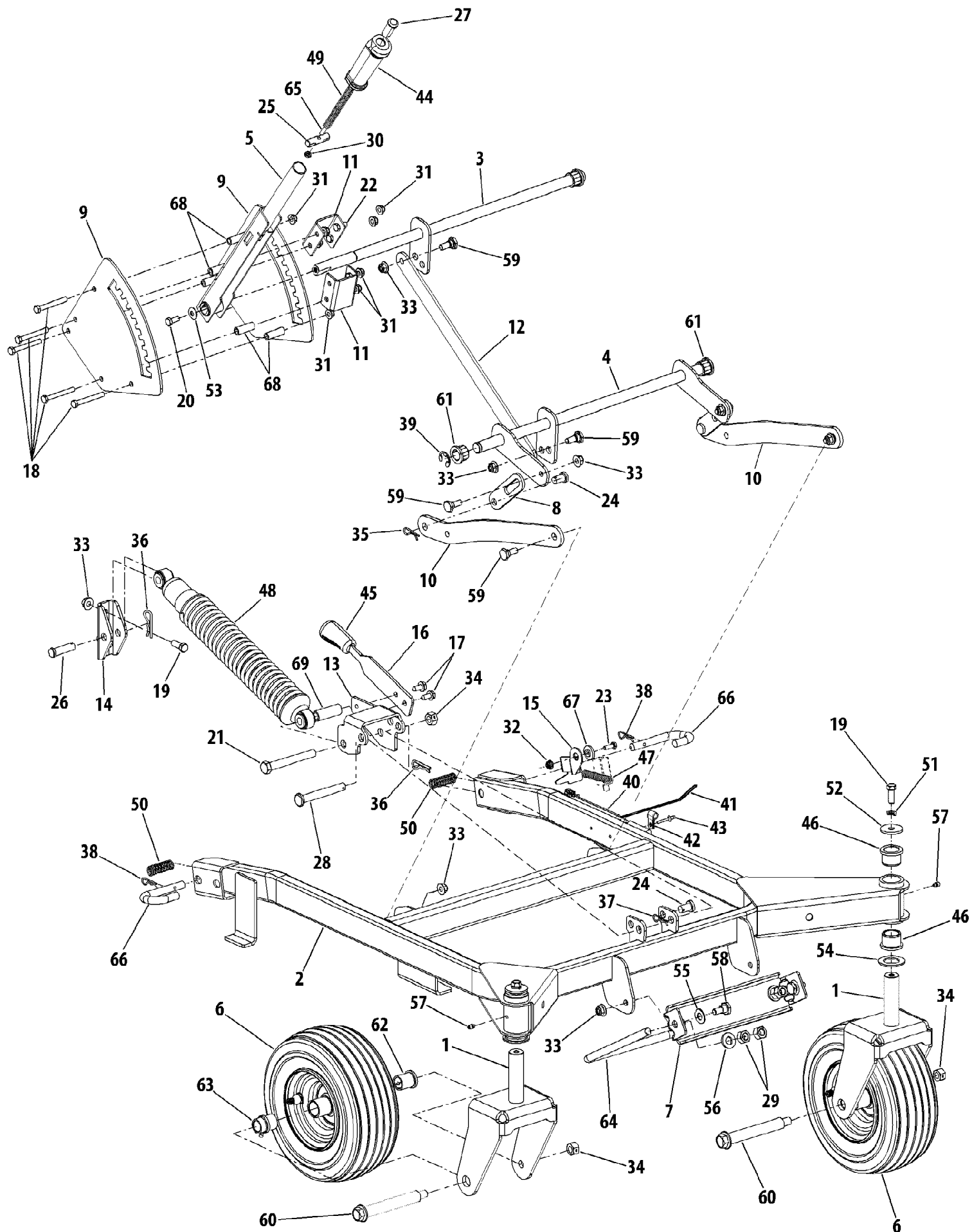


Deck Frame and Lift Handle

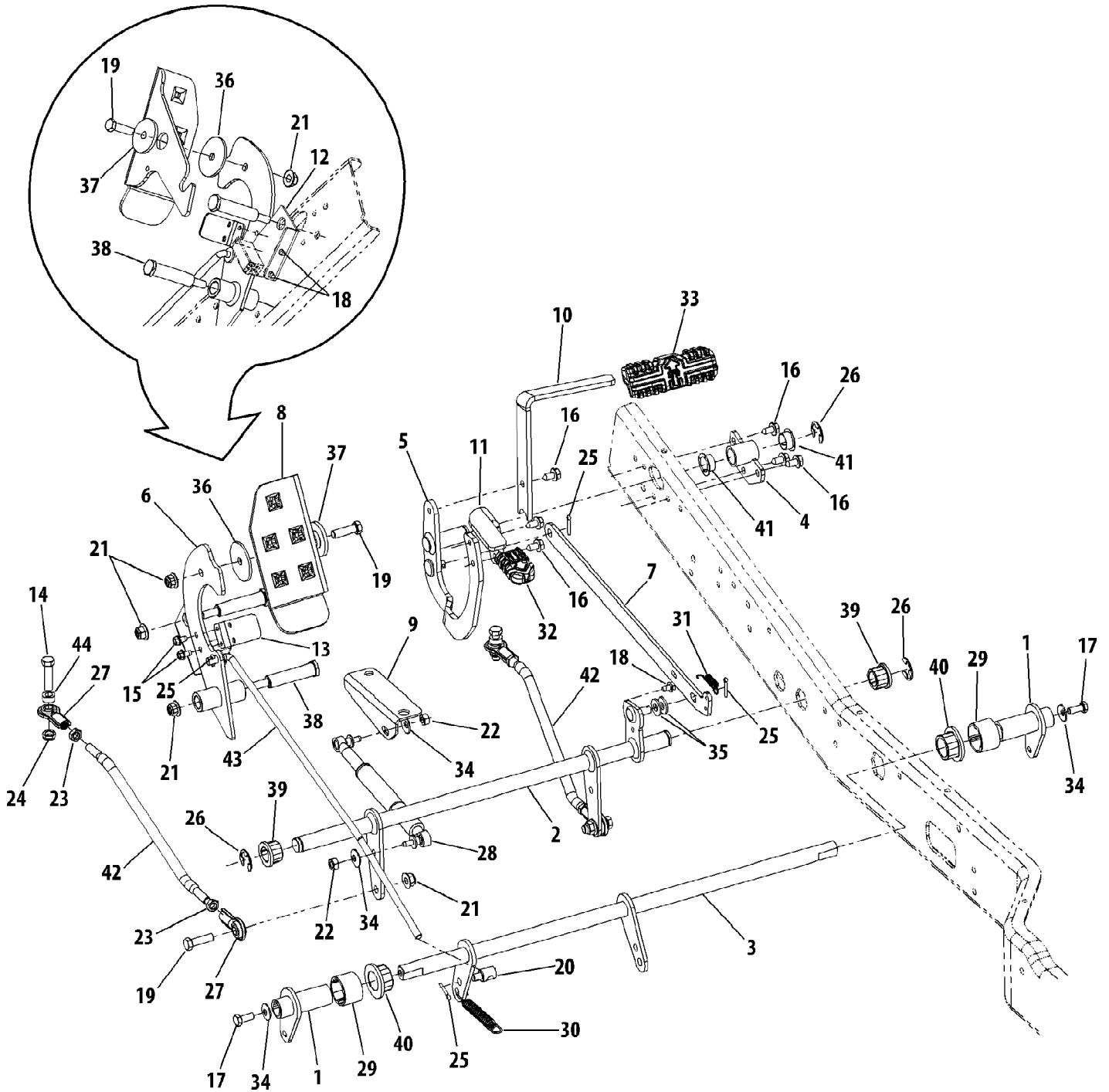


| Ref # | Part Number     | Qty | S/P/F | Description   |
|-------|-----------------|-----|-------|---|
| 1     | 603-04308       | 1   |       | Bracket, Castor Wheel                                       |
| 2     | 603-04499-0637  | 1   |       | Frame, Deck 5-23-08 & Before                                |
| 2     | 603-04499A-0637 | 1   |       | Frame, Deck 5-23-08 & After                                 |
| 3     | 603-04505       | 1   |       | Shaft Assembly, Deck Lift                                   |
| 4     | 603-04506       | 1   |       | Shaft Assembly, Deck Lift                                   |
| 5     | 603-04509       | 1   |       | Handle Assembly, Lift                                       |
| 6     | 634-04212A      | 1   | S     | Wheel Assembly, Caster                                      |
| 7     | 703-05414A      | 1   |       | Bracket, Front Deck Hanger                                  |
| 8     | 703-06209       | 1   |       | Link, Deck Lift Arm   |
| 9     | 703-06213       | 1   |       | Plate, Index  |
| 10    | 703-06389       | 1   |       | Arm, Deck Lift  |
| 11    | 703-06408       | 1   |       | Bracket, Index Mounting                                     |
| 12    | 703-06409       | 1   |       | Link, Deck Lift   |
| 13    | 703-06568       | 1   |       | Bracket, Shock Absorber Mounting                            |
| 14    | 703-06596       | 1   |       | Mount, Shock Abs.   |
| 15    | 703-06663       | 1   | S     | Bracket, Deck Limit Switch                                  |
| 16    | 703-06673       | 1   |       | Handle, Shock Absorber                                      |
| 17    | 710-04484       | 1   |       | Screw, Hex Wash. Hd. Tapp, 5/16-18 x .75                    |
| 18    | 710-0378        | 1   | /P    | Screw, Hex Cap, 5/16-18 x 2.5 Gr5                           |
| 19    | 710-0514        | 1   | /P    | Screw, Hex Cap, 3/8-16 x 1.0 Gr5                            |
| 20    | 710-0627        | 1   | /P    | Screw, Hex Cap Lock, 5/16-24 x .75 Gr5                      |
| 21    | 710-0786        | 1   | /P    | Screw, Hex Cap, 1/2-13 x 4.0 Gr5                            |
| 22    | 710-3008        | 1   | /P    | Screw, Hex Cap, 5/16-18 x .75 Gr5                           |
| 23    | 710-3015        | 1   | /P    | Screw, Hex Cap, 1/4-20 x .75 Gr5                            |
| 24    | 711-0332        | 1   | S     | Pin, Clevis, .5 x .78                                       |
| 25    | 711-04898       | 1   |       | Pin, Index  |
| 26    | 711-04997       | 1   | /P    | Pin, Clevis, .5 x 1.59                                      |
| 27    | 711-0642A       | 1   | /P    | Button, Handle  |
| 28    | 711-1206        | 1   |       | Pin, Clevis, .5 x 3.75                                      |
| 29    | 712-0206        | 1   | S     | Nut, Hex, 1/2-13 Gr5  |
| 30    | 712-0298        | 1   | S     | Nut, Hex Jam, 1/4-20  |
| 31    | 712-04063       | 1   | /P    | Nut, Hex Insert Flange Lock, 5/16-18 GrF                    |
| 32    | 712-04064       | 1   | /P    | Nut, Hex Insert Flange Lock, 1/4-20 GrF                     |
| 33    | 712-04065       | 1   | /P    | Nut, Hex Insert Flange Lock, 3/8-16 GrF                     |
| 34    | 712-3022        | 1   | /P    | Nut, Hex Lock, 1/2-13 GrB                                   |
| 35    | 714-0145        | 1   | S     | Pin, Internal Cotter  |
| 36    | 714-0147        | 1   | /P    | Pin, Internal Cotter  |
| 37    | 714-04023       | 1   | S     | Pin, Internal Cotter  |
| 38    | 714-0470        | 1   | S     | Pin, Internal Cotter Replaces 714-04023 in this application |
| 39    | 716-0231        | 1   | S     | E-Ring, Retainer  |
| 40    | 725-04715       | 1   |       | Harness, Safety   |
| 41    | 726-0154        | 1   | S     | Tie, Cable, Push Mount                                      |
| 42    | 726-04056       | 1   |       | Clamp, Hose   |
| 43    | 728-04000       | 1   |       | Rivet, Pop, .188 x .3                                       |
| 44    | 731-3158        | 1   | /P    | Grip, Deck Lift Handle                                      |
| 45    | 731-04735       | 1   |       | Grip, Shock Absorber Handle                                 |
| 46    | 731-05500       | 1   |       | Bearing, Flange, 1.0 x 1.246                                |
| 47    | 732-0428A       | 1   | S     | Spring, Extension, .50 x 4.35                               |
| 48    | 732-04512       | 1   |       | Shock Absorber  |
| 49    | 732-3097        | 1   |       | Spring, Compression, .4 x 8.52                              |
| 50    | 732-3127        | 1   | S     | Spring, Compression, .66 x 1.9                              |

FMZ50  
Deck Frame and Lift Handle

Page 3 of 50

| Ref # | Part Number | Qty | S/P/F | Description                             |
|-------|-------------|-----|-------|---|
| 51    | 736-0169    | 1   | S     | Washer, Lock, 3/8                       |
| 52    | 736-0227    | 1   | S     | Washer, Flat, .39 x 1.5 x .134          |
| 53    | 736-0242    | 1   | /P    | Washer, Belleville, .34 x .872 x .06    |
| 54    | 736-0250    | 1   | /P    | Washer, Flat, 1.0 x 1.75 x .107         |
| 55    | 736-0272    | 1   | S     | Washer, Flat, .52 x 1.0 x .06           |
| 56    | 736-3019    | 1   |       | Washer, Flat, .531 x 1.062 x .134 HT    |
| 57    | 737-3000    | 1   | S     | Fitting, Lube, 3/16 Drive               |
| 58    | 738-0143    | 1   | /P    | Screw, Shoulder, .496 x .336: 3/8-16    |
| 59    | 738-0380    | 1   | S     | Screw, Shoulder, .5 x .27:3/8-16        |
| 60    | 738-04182A  | 1   | /P    | Bolt, Shoulder, .75 x 4.75: 1/2-13      |
| 61    | 741-0245    | 1   | S     | Bearing, Hex Flange, .75 ID             |
| 62    | 741-0516B   | 1   | /P    | Bearing, Flange, .76 x 1.0 x 1.2        |
| 63    | 741-0990B   | 1   | /P    | Bearing, Flange, .76 ID w/ Lube Fitting |
| 63    | 737-3034    | 1   | /P    | Grease -#251 EP, Tube Not Shown         |
| 64    | 747-04858   | 1   |       | Rod, Deck Front Hanger                  |
| 65    | 747-04859   | 1   |       | Rod, Lift Index                         |
| 66    | 747-3188    | 1   |       | Rod, Deck Release                       |
| 67    | 748-04192   | 1   |       | Spacer, Shoulder, .5 x .11 x .25        |
| 68    | 750-04981   | 1   |       | Spacer, Handle                          |
| 69    | 750-05095   | 1   |       | Spacer, .51 x .69 x 1.97                |
|       | 735-04130   | 1   | /P    | Strip - Edge Trim Frame Not Shown       |



FMZ50

Page 5 of 50

## Drive Pedals &amp; Controls

| Ref # | Part Number | Qty | S/P/F | Description                               |
|-------|-------------|-----|-------|---|
| 1     | 603-04526   | 1   |       | Lever, Brake                              |
| 2     | 603-04535   | 1   | S     | Shaft, Control Pedal                      |
| 3     | 603-04560   | 1   |       | Shaft, Brake Cross                        |
| 4     | 603-04587   | 1   |       | Hub, Pedal Pivot                          |
| 5     | 603-04590   | 1   |       | Pedal, Reverse/Forward                    |
| 6     | 603-04602   | 1   |       | Pedal, Brake Pivot                        |
| 7     | 703-06339   | 1   |       | Link, Forward                             |
| 8     | 703-06603   | 1   |       | Pedal, Brake                              |
| 9     | 703-06629   | 1   |       | Bracket, Damper Cylinder Mount            |
| 10    | 703-06636   | 1   |       | Pedal, Forward                            |
| 11    | 703-06654   | 1   |       | Pedal, Reverse                            |
| 12    | 703-06676   | 1   |       | Bracket, Brake Switch Mounting            |
| 13    | 703-06678   | 1   |       | Bracket, Brake Switch                     |
| 14    | 710-0520    | 1   | /P    | Screw, Hex Cap, 3/8-16 x 1.5 Gr5          |
| 15    | 710-0599    | 1   | /P    | Screw, Hex Wash. Hd. Tapp, 1/4-20 x .5    |
| 16    | 710-0604A   | 1   | /P    | Screw, Hex Wash. Hd. Tapp, 5/16-18 x .625 |
| 17    | 710-0627    | 1   | /P    | Screw, Hex Cap, 5/16-24 x .75 Gr5 Lock    |
| 18    | 710-0653    | 1   | /P    | Screw, Hex Wash. Hd. Tapp, 1/4-20 x .375  |
| 19    | 710-3005    | 1   | /P    | Hex Cap Screw, 3/8-16 1.25 Gr5            |
| 20    | 711-0832    | 1   | S     | Ferrule, 3/8-24 x .375                    |
| 21    | 712-04065   | 1   | /P    | Nut, Hex Insert Flange Lock, 3/8-16 GrF   |
| 22    | 712-0690    | 1   | /P    | Nut, Hex, M8-1.25                         |
| 23    | 712-0711    | 1   | /P    | Nut, Jam, 3/8 -24 Gr5                     |
| 24    | 712-3020    | 1   | S     | Nut, Hex Insert Jam Lock, 3/8-16 Gr5      |
| 25    | 714-0474    | 1   | S     | Pin, Cotter, .125 x .75                   |
| 26    | 716-0231    | 1   | S     | Ring, E                                   |
| 27    | 723-04035   | 1   |       | Ball Joint End . 375                      |
| 28    | 727-3113    | 1   |       | Cylinder, Damper                          |
| 29    | 731-05163   | 1   | /P    | Spacer, 1.5 x 1.0 x 1.0                   |
| 30    | 732-0429A   | 1   | S     | Spring, Extension, .5 x 3.97              |
| 31    | 732-04549   | 1   |       | Spring, Extension, .375 x 1.48            |
| 32    | 735-04117   | 1   |       | Pad, Reverse Pedal                        |
| 33    | 735-04118   | 1   | S     | Pad, Forward Pedal                        |
| 34    | 736-0242    | 1   | /P    | Washer, Belleville, .34 x .872 x .06      |
| 35    | 736-0262    | 1   | /P    | Washer, Flat, .385 x .87 x .092           |
| 36    | 736-04018   | 1   |       | Washer, Flat, .38 x 2.0 x .12             |
| 37    | 738-04162A  | 1   | /P    | Spacer, Shoulder, .884 x .19              |
| 38    | 738-04216A  | 1   | /P    | Bolt, Shoulder, .625 x 2.515:3/8-16       |
| 39    | 741-0245    | 1   | S     | Bearing, Hex Flange, .75 ID               |
| 40    | 741-04324   | 1   |       | Bearing, Hex Flange, 1.25 x .775          |
| 41    | 741-3084    | 1   |       | Bearing, Flange, .75 x 1.125 x .375       |
| 42    | 747-04883A  | 1   |       | Rod, Control - Forward/Reverse            |
| 43    | 747-04896   | 1   | S     | Rod, Idler                                |
| 44    | 750-04776   | 1   |       | Spacer, .38 x .625 x .265                 |