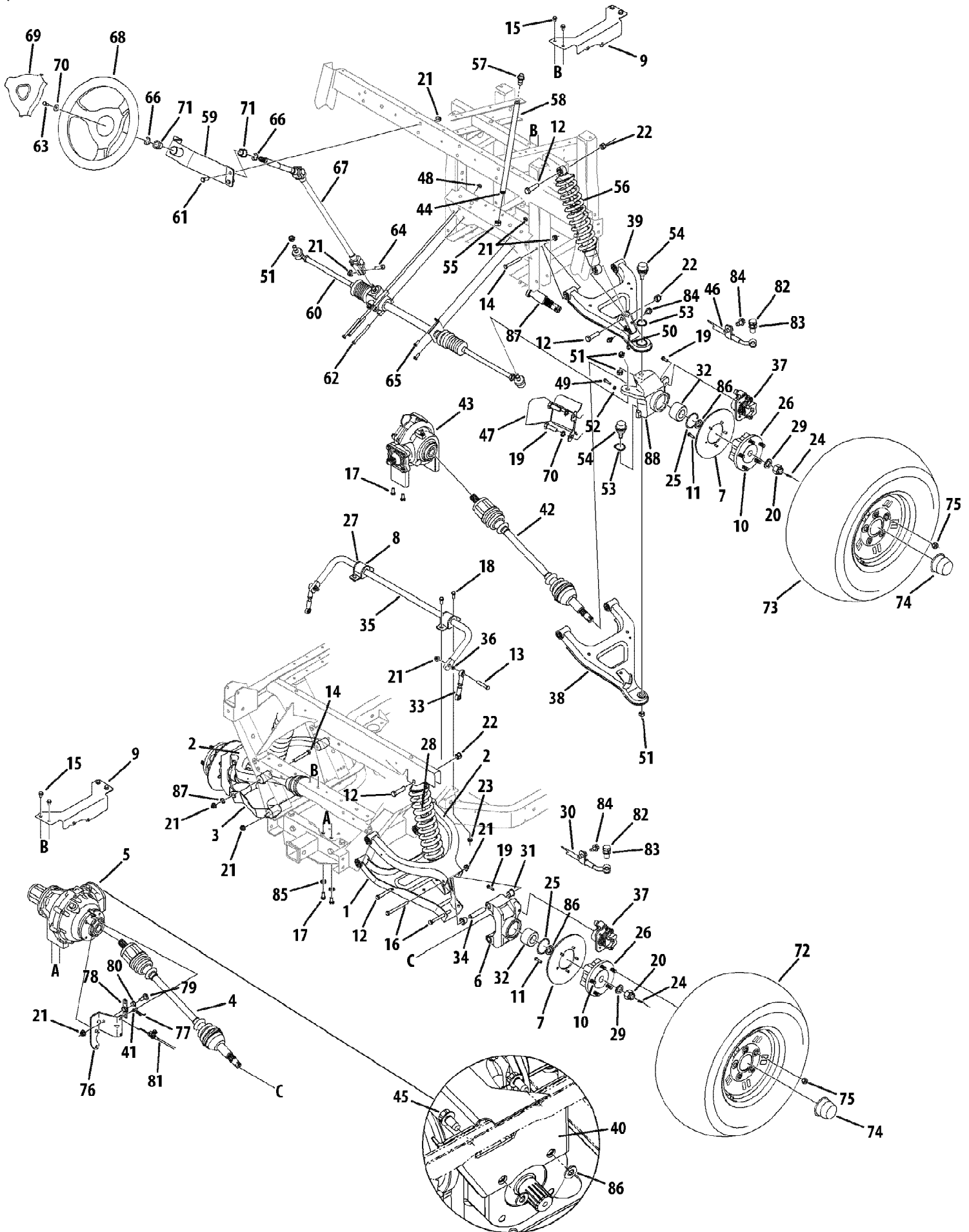


46G 4X4 Utility Vehicle EFI 1i019G & Before
Axles & Steering



Ref #	Part Number	Qty	S/P/F	Description
1	607-04163A	1	/P	Cont Assembly, lwr, r/rr
2	607-04162A	1	/P	Cont Assembly, rr Upr
3	607-04169A	1	/P	Cont Assembly, lwr, l/rr
4	611-04063A	1	S	Axle Assembly, cv Joint
4	759-04173	1		Ring, Hog Not Shown
4	731-05082	1		Boot, CV, Differential Not Shown
4	731-05083	1		Boot, CV, Wheel Not Shown
5	918-04236	1	/P	Diff Assembly, Uv, complete
5	921-04005	1	/P	Seal, Axle Shaft Not Shown
5	721-0212	1		Seal, Diff Lock Actuator Shaft .375 ID Not Shown
5	721-04143	1		Seal, Input Shaft 1.0 x 62mm x .375 Not Shown
6	619-04188	1		Hsg, rr, mach
7	707-04436A	1	/P	Disc, brake, 8.00x.188
8	707-04655-0637	1	/P	Mt, sway Bar 4x4 Units Only
9	707-04603A-0637	1	/P	Mt, rear/diff, 4x4
9	707-04604A-0637	1	/P	Mt,front/diff, 4x4 4x4 Units Only
10	710-0852	1	/P	Stud, rib Neck, 7/16-14 X 1.6
11	710-0433	1	/P	Screw, 1/4-20, .625, gr5, lock
12	710-0489	1		Screw, 1/2-13, 2.00, gr5, std
13	710-04640	1		Screw, 3/8-18, 1.75, gr5 4x4 Units Only
14	710-0521	1	/P	Screw, 3/8-16, 3.00, gr8, std
15	710-0607	1	/P	Scr, tt, 5/16-18, 0.500, hxindwsh 4x4 Units Only
16	710-04637	1		Screw, 3/8-16, 4.00, gr5
17	710-0216	1	/P	Screw, 3/8-16, .75, gr5, std 4x4 Units Only
18	710-0157	1	/P	Screw, 5/16-24, .75, gr5, std 4x4 Units Only
19	710-04639	1		Screw, m8-1.25, 25.00
20	712-04109	1		Nut, slotted, 22x1.5
21	712-04065	1	/P	Nut, flglk, 3/8-16, grf, nylon
22	712-3083	1	/P	Nut, hexlk, 1/2-13, grb, nylon
23	712-04063	1	/P	Nut, flglk, 5/16-18, grf, nylon
24	714-0162	1	/P	Pin, cot, 5/32, 1.25
25	716-04055	1		Ring, ret, dho-60
26	918-04489	1	/P	Hub, Wheel
27	731-05352	1		Bush, sway Bar 4x4 Units Only
28	732-04423	1		Shabs, 5.0 Stroke, rr
29	936-0291	1	/P	Wash, flat, .88 X 1.38 X .125, ht
30	927-04228	1	/P	Hose, brake, rear
31	741-04234A	1	S	Brg, flg, .625 X .750 X .750 Lg
32	741-04166	1		Brg, dble Row, 60x30x37
33	747-04514	1		Rod, cont, .375x3.886
34	750-04358B	1	/P	Tube, pivot, rr/cont Arm
35	750-04487A	1	/P	Bar, sway, rr 4x4 Units Only
36	736-3010	1	/P	Washer, Flat, .407 x .812 x .135
37	961-04043	1	/P	Brake, hyd, caliper RH
37	961-04044	1	/P	Brake, hyd, caliper LH
37	761-04064	1		Brake Pad Kit Kit contains two brake pads
38	607-04145A	1	/P	Cont Assembly, r/frt,lwr
39	607-04148	1		Arm Assembly, r/frt,upr

Ref #	Part Number	Qty	S/P/F	Description
40	707-05018-0637	1	/P	Brkt, Diff, RR
41	715-04011	1		Pin, Roll
42	911-04071A	1	/P	Axle Assembly,cv Joint,4x4 4x4 Units Only
42	759-04173	1		Ring, Hog Not Shown
42	731-05082	1		Boot, CV, Differential Not Shown
42	731-05083	1		Boot, CV, Wheel Not Shown
43	918-04316	1	/P	Diff Assembly,cfd,4x4 4x4 Units Only
44	726-04041	1		Clamp, Hose, Adj. 4x4 Units Only
45	710-0623	1	/P	Scr., tt, 3/8-16 x .750
46	927-04224	1	/P	Hose, brake, front
47	707-04833-0637	1	/P	Brkt,shld,strg,RH 4x4 Units Only
47	707-04832-0637	1	/P	Brkt,shld,strg,LH 4x4 Units Only - Not Shown
48	712-3004A	1	/P	Nut, Flg Lk, 5/16-18
49	710-0597	1	/P	Screw,1/4-20,1.00,gr5,spec
50	732-04383	1		Wire, Brake Line
51	712-04086	1		Nut,nylock,m12x1.25
52	712-3006	1	/P	Nut,hex,1/4-20,gr5
53	716-04039	1		Ring,ret,34x1.6
54	723-04024	1		Ball joint, bj14d-6201
55	726-0205	1	/P	Clamp,hose,.490 Dia. 4x4 Units Only
56	732-04424	1		Shabs,5.0 Stroke,frt
57	737-0296	1	/P	Vent,3/8 Dia 4x4 Units Only
58	751-10350	1		Hose,fuel Line 4x4 Units Only
59	607-04124-0637	1		Supt Assembly,strg,Wheel
60	617-04041P	1	/P	Strg Assembly,gr
61	710-0514	1	/P	Screw,3/8-16,1.00,gr5,std
62	710-1266	1	/P	Screw,5/16-18,3.50,gr5,std
63	710-1880	1	/P	Screw,5/16-18,.75,gr5,patch
64	710-3005	1	/P	Screw,3/8-16,1.25,gr5,std
65	710-3008	1	/P	Screw,5/16-18,.75,gr5,std
66	916-0231	1	/P	Ring,e Type,.750
67	717-04200	1		Shft,strg
68	731-04514	1		Wheel,strg,soft Grip 3 Spoke 5/8
69	731-06459	1		Cvr, Wheel, steering
70	736-0242	1	/P	Wash,bell,.340 X .872 X .060
71	941-0339	1	/P	Brg,flg,.754id X 1.00odx.925
72	634-04443	1	/P	Wheel Ass'y, Right compl,25x11-12, AT, Beige
72	634-04445	1		Wheel Ass'y, Right compl,25x11-12, AT, black
72	634-04484	1		Wheel Ass'y, Right compl,25x11-12, AT, Spoke Kohler EFI Units
72	634-04444	1	/P	Wheel Ass'y, Left compl,25x11-12, AT, Beige Not Shown
72	634-04446	1		Wheel Ass'y, Left compl,25x11-12, AT, black Not Shown
72	634-04485	1		Wheel Ass'y, Left compl,25x11-12, AT, Spoke Kohler EFI Units - Not Shown

46G 4X4 Utility Vehicle EFI 1I019G & Before
Axles & Steering

Page 4 of 60

Ref #	Part Number	Qty	S/P/F	Description
72	634-04407	1		Wheel Ass'y, compl,25x10-12, All Trail, black 4x2 Units Only
72	634-04575	1		Wheel Ass'y,25x10-12, All Trail Not Shown
72	734-04156	1		Tire Only, 25x11-12 AT Not shown
72	734-04323	1		Tire Only, 25x10.5-12 All Trail 4x2 Units Only, Not shown
72	734-04269	1		Tire Only, 24X9.50-12, Turf Not shown
72	634-04176B	1	S	Rim, 12X7, Beige Not shown
72	634-04243B	1	S	Rim, 12X7, black Not shown
72	634-04284	1		Rim, 12X7.5, Spoke Not shown
72	734-0255	1	S	Valve, Air Not shown
73	634-04216B	1	/P	Wheel Ass'y, Right compl,25x10-12, AT, Beige
73	634-04246B	1	/P	Wheel Ass'y, Right compl,25x10-12, AT, black
73	634-04486	1		Wheel Ass'y, Right compl,25x10-12, AT, Spoke Kohler EFI Units
73	634-04217B	1	/P	Wheel Ass'y, Left compl,25x10-12, AT, Beige Not Shown
73	634-04247B	1	/P	Wheel Ass'y, Left compl,25x10-12, AT, black Not Shown
73	634-04487	1		Wheel Ass'y, Left compl,25x10-12, AT, Spoke Kohler EFI Units - Not Shown
73	634-04407	1		Wheel Ass'y, compl,25x10-12, All Trail, black 4x2 Units Only
73	634-04575	1		Wheel Ass'y,25x10-12, All Trail Not Shown
73	734-04157	1		Tire Only, 25x10-12 AT Not shown
73	734-04323	1		Tire Only, 25x10.5-12 All Trail 4x2 Units Only, Not shown
73	734-04269	1		Tire Only, 24X9.50-12, Turf Not shown
73	634-04176B	1	S	Rim, 12X7, Beige Not shown
73	634-04243B	1	S	Rim, 12X7, black Not shown
73	634-04284	1		Rim, 12X7.5, Spoke Not shown
73	734-0255	1	S	Valve, Air Not shown
74	707-04740	1		Cap, Wheel UV
74	707-05007	1		Cap, Wheel UV, Chrome Kohler EFI Units
75	712-3050	1	/P	Nut, lug, 7/16-14
75	712-04127	1		Nut, lug, 7/16-14, Chrome Kohler EFI Units
76	707-04693-0637	1		Brkt, diff, cbl,mnt
77	732-0418	1		Spr, ext, .38od x 2.10
78	607-04216A	1	/P	Lvr, Ass'y, Diff Lock
79	938-0507B	1	/P	Scr, shldr, .500 dia x .434
80	741-0491	1		Brg, flg, nyliner, .500id x .34lg
81	746-04248	1		Cbl, cont, diff, lock
82	737-04129	1		Ftg, banjo ftg bolt, M10x1.00
83	737-04130	1		Ftg, banjo ftg crush wash,10mm
84	710-0599	1	/P	Screw, tt, 1/4-20x.500
85	736-0262	1	/P	Washer, Flat, 385 x .870 x .092

Ref #	Part Number	Qty	S/P/F	Description
86	936-0275	1	/P	Wash, Flat, .344 x .688 x .065
87	711-04401	1		Axle, Frt, 4x2 4x2 Units Only
88	619-04137A	1	S	Hsg, knuckle, r/frt, mach
88	619-04142A	1	S	Hsg, knuckle, l/frt, mach Not Shown
	723-3021	1	/P	Creeper Drive Housing Breather Not Shown
	737-04149	1		Adap, Diff, Breather Not Shown
	607-04152A	1	/P	Cont Assembly, l/ft, lwr Not Shown
	607-04153	1		Cont Assembly, l/frt, upr Not Shown

46G 4X4 Utility Vehicle EFI 1I019G & Before
Frame & Bumper

