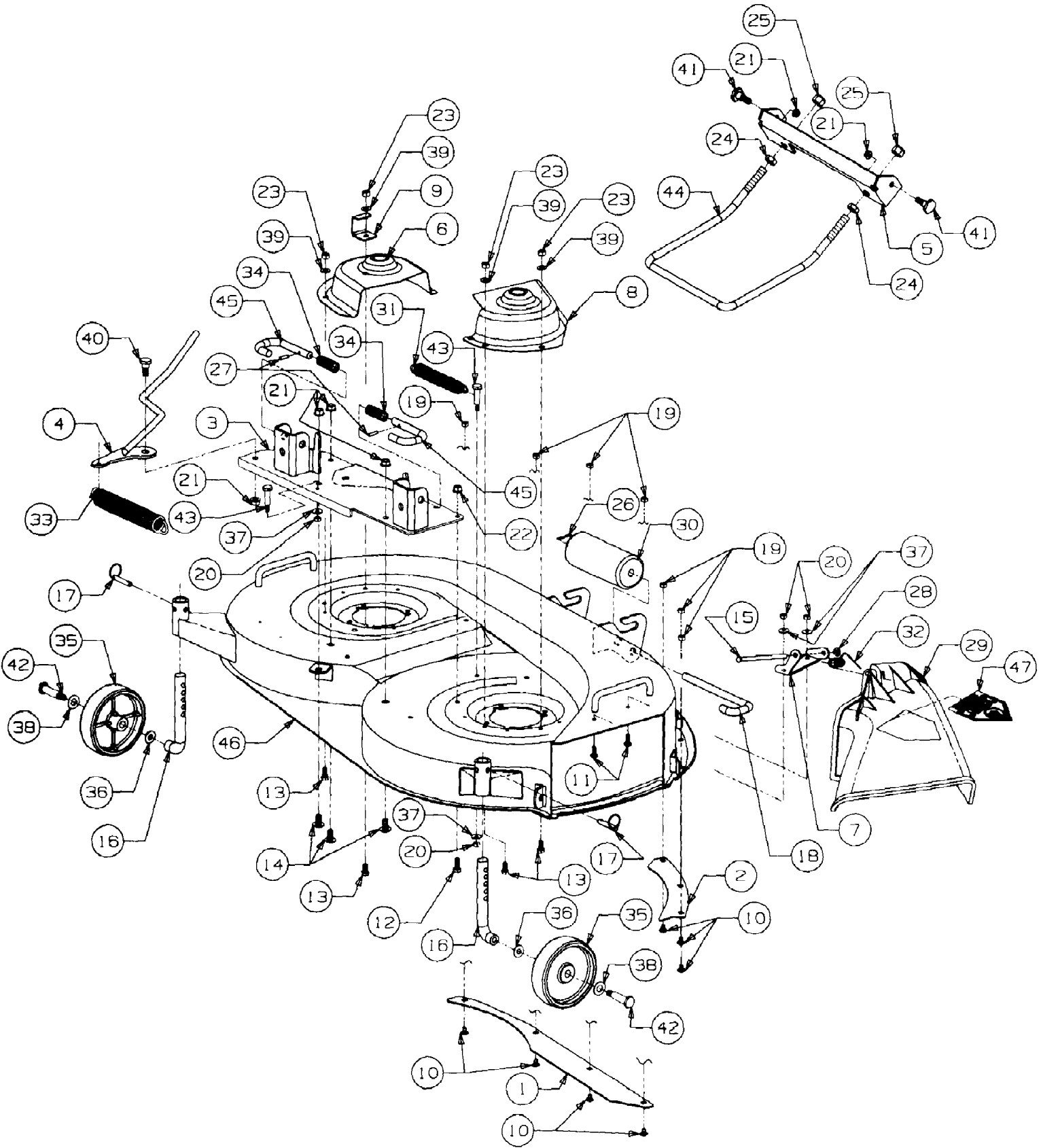


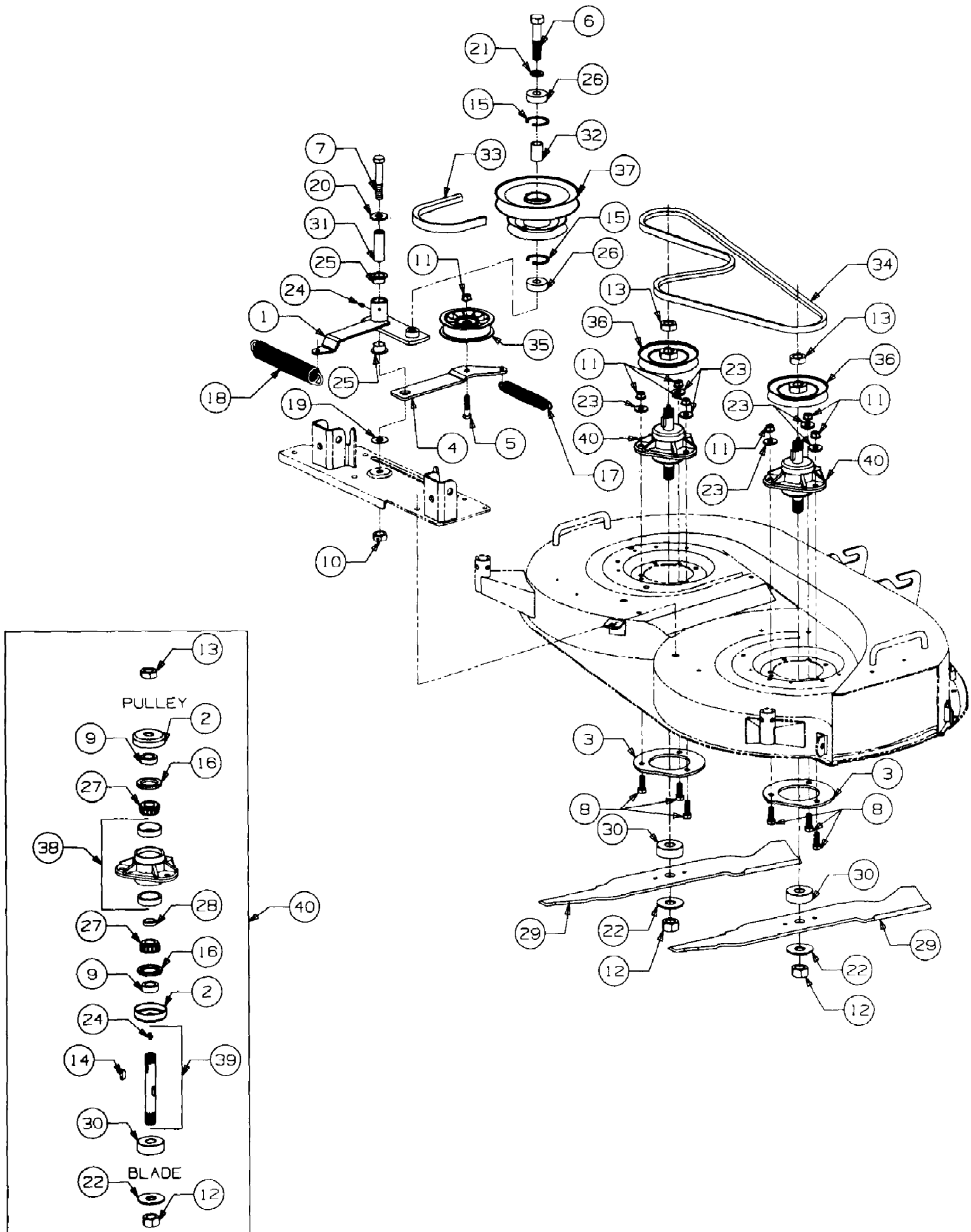
42" Deck Assembly



2140 Tractor S/N 239,001 - 326,005  
42" Deck Assembly

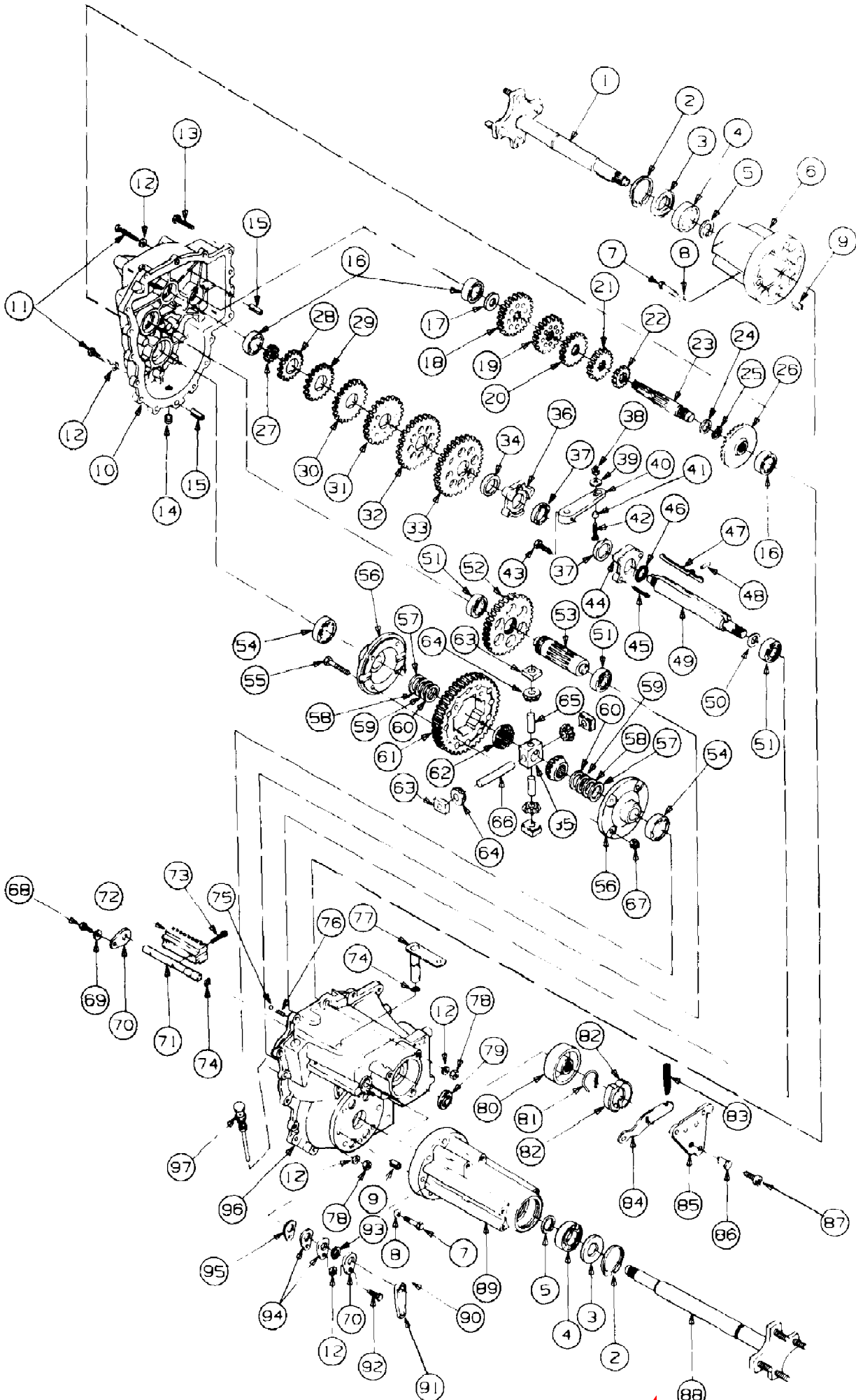
Page 2 of 76

Ref #	Part Number	Qty	S/P/F	Description
1	17861A	1	S	Skirt, Extension
2	17961	1	S	Skirt, Short
3	603-0181	1	S	Plate Assy, Mounting
4	603-0199	1		Handle, Tension
5	603-0200	1	S	Bracket, Front Lift
6	703-1651A	1	S	Cover, LH Belt
7	703-1693	1	S	Bracket, Hinge Mtg
8	703-2182	1	S	Cover, RH Belt
9	703-2559	1		Bracket, Handle Stop
10	710-0167	7	/P	Bolt, Carriage, 1/4-20 x .50 Lg
11	710-0258	2	S	Screw, Hex Cap, 1/4-20 x .62 Lg GR2
12	710-3008	1	/P	Screw, Hex Cap, 5/16-18 x .75 Lg GR5
13	710-3021	4	/P	Screw, Hex Cutting, 5/16-18 x .62 Lg
14	710-3178	3	/P	Bolt, Sht Nk Carriage, 3/8-16 x .75 Lg GR5
15	711-0792	1	S	Pin, Hinge, .25 Dia x 6.75 Lg
16	711-3256	2	/P	Axle, Deck
17	711-3266	2	S	Pin, Clevis w/Ball Detent
18	711-3314	1	S	Pin, Roller, 1/2 Dia x 7.31 Lg
19	712-0271	7	/P	Nut, Hex Sems, 1/4-20
20	712-0287	4	S	Nut, Hex, 1/4-20
21	712-0431	6	S	Nut, Hex Flanged Lock, 3/8-16
22	712-3004A	1	/P	Nut, Hex Flange Top Lock 5/16-18
23	712-3010	4	S	Nut, Hex, 5/16-18 GR5
24	712-3048	2	S	Nut, Hex Jam, 1/2-13 GR5
25	712-3083	2	/P	Nut, Hex Top Nylon Lock 1/2-13
26	714-0115	1	S	Pin, Cotter, 1/8 Dia x 1.0 Lg
27	715-3003	2	/P	Pin, Spirol Spring, 3/16 Dia x .75 Lg
28	726-0106	1	S	Cap, Speed Nut
29	731-1032	1	S	Deflector Assy, Chute (Includes Ref No. 7, 15, 28 & 32)
30	731-3005	1	/P	Roller
31	732-0262	1	S	Spring, Extension, .88 OD x 6.12 Lg
32	732-0602	1	S	Spring, Torsion
33	732-3115	1	/P	Spring, Extension, 1.25 OD x 8.15 Lg
34	732-3127	2	S	Spring, Compression
35	734-0973	2	/P	Wheel, Deck, 5 in. Dia
36	736-0105	2	/P	Washer, Bell, .380 x .88 x .062 Thk
37	736-0270	4	/P	Washer, Bell, .265 x .75 x .062 Thk
38	736-0272	2	S	Washer, Flat, .510 x 1.0 x .060 Thk
39	736-0275	4	S	Washer, Flat, .34 x .68 x .062 Thk
40	738-0143	1	/P	Bolt, Shoulder, .498 Dia x .340 Lg
41	738-0507B	2	S	Bolt, Shoulder, .50 Dia x .434 Lg
42	738-0533	2	S	Bolt, Shoulder, .498 Dia x 1.64 Lg
43	738-0572	2	S	Bolt, Shoulder, .375 Dia x 1.16 Lg
44	747-3172	1	S	Rod, Front Lift
45	747-3188	2		Pin, Mower Support
46	759-3731	1		Deck Assy w/Graphics
	777-9192A	1	S	Graphic, Rider Danger
	777-1043	1		Graphic, Man & Machine
	777-9341	1	S	Graphic, Assemble Chute
47	777-2196	1	S	Graphic, Danger



Ref #	Part Number	Qty	S/P/F	Description
1	603-0172	1	S	Pivot Arm, Double Pulley
2	703-1387	4	S	Cup, Spindle Hdn
3	703-1650	2	/P	Plate, Spindle Mtg
4	703-2463	1	S	Arm, Idler
5	710-0520	1	/P	Screw, Hex Cap, 3/8-16 x 1.50 Lg GR5
6	710-0923	1	/P	Screw, Hex Cap, 5/8-18 x 3.0 Lg GR5
7	710-1010	1	/P	Screw, Hex Cap, 1/2-20 x 3.0 Lg GR8
8	710-3005	6	/P	Screw, Hex Cap, 3/8-16 x 1.25 Lg GR5
9	711-3171	4	S	Spacer, .755 x 1.25 x .44 Lg
10	712-0239	1	S	Nut, Hex Center Lock, 1/2-20
11	712-0431	7	S	Nut, Hex Flanged Lock, 3/8-16
12	712-3018	2	S	Nut, Hex, 3/4-16 GR8
13	712-3026	2	S	Nut, Hex Jam, 3/4-16 GR5
14	714-0135	2	S	Key, #91 Woodruff, 1/4 x 3/4 Hdn
15	716-3020	2	S	Snap Ring, Internal
16	721-3018	4	S	Seal, Oil, 1.25 x 1.874 x .25
17	732-0262	1	S	Spring, Extension, .88 OD x 6.12
18	732-3115	1	/P	Spring, Extension, 1.25 OD x 8.15 Lg
19	736-0100	1	/P	Washer, Flat, .531 x 1.25 x .036 Thk
20	736-0179	1	S	Washer, Flat, .531 x 1.25 x .100 Thk
21	736-0290	1	/P	Washer, Flat, .63 x 1.0 x .063 Thk Hdn
22	736-3014	2	/P	Washer, Flat, .781 x 2.0 x .105 Thk
23	736-0258	6	/P	Washer, Flat, .385 x 1.0 x .1 35 Thk
24	737-3000	3	S	Fitting, 3/16 Drive Lube
25	741-0338	2	/P	Bearing, Flange, 3/4 ID x .53 Lg
26	741-0524	2	S	Bearing, Ball, .62 ID x 1.57 OD x .44 Thk
27	741-3028	4	S	Cone, Bearing
28	741-3030	2	S	Spacer, Bearing
29	742-3018	2	S	Blade, Low Lift, 21.20 Lg
	742-3017	2	S	Blade, Bagging, 21.20 Lg
30	748-3020	2	S	Spacer
31	750-0656	1	/P	Spacer, Idler Brkt, .50 ID x .75 OD x 2.25 Lg
32	750-3132	1	S	Spacer, Pulley, .635 ID x .98 OD x 1.25 Lg
33	754-3055A	1	S	Belt, PTO, B-Section x 112.4
34	754-3073	1	S	Belt, Spindle, A-Section x 62 Lg
35	756-0627	1	S	Pulley, Flat Idler, 3.5 OD
36	756-3008	2	/P	V-Pulley, 4.62 OD
37	756-3069	1	S	Pulley, Double
38	759-3226	2	S	Housing w/Cups, Spindle
39	759-3369	2	S	Kit, Shaft w/Seal
40	759-3665	2	S	Spindle Assy, Blade

2140 Tractor S/N 239,001 - 326,005  
6-Speed Transmission



2140 Tractor S/N 239,001 - 326,005  
6-Speed Transmission

Page 6 of 76

Ref #	Part Number	Qty	S/P/F	Description
1	611-3008	1		Axle Assy, LH, 11.9" Lg
2	716-3015	2		Ring, Inverted Retainer
3	721-3020	2	S	Seal, Oil
4	741-3033A	2	S	Bearing
5	716-3018	2		Ring, External Retainer
6	619-3025	1		Housing, LH, Axle
	759-3746	1		Sealant, Ultra Grey, 2 oz tube
7	710-1008	16		Screw, Hex Cap Lock 3/8-16 X 1.88 Lg (Used with transmission serial no. 005793 & above)
	710-3236	16		Screw, Hex Cap Lock 3/8-16 X 1.75 Lg (Used with transmission serial no. 005792 & below)
8	736-0213	16	/P	Washer, Bell (Used with transmission serial no. 005792 & below)
9	715-3045	4	S	Bushing, Dowel
10	619-3037	1		Housing, LH, Differential (Used with transmission serial no. 005793 & above)
	759-3746	1		Sealant, Ultra Grey, 2 oz tube
	619-3008	1		Housing, LH, Differential (Transmission serial no. 005792 & below order 619-3037 housing & 8 of 710-1008 screw)
11	710-0606	2	/P	Screw, Hex Cap, 1/4-20 X 1.5 Lg
12	736-0463	5	S	Washer, Flat, .25 X .62 X .052 Thk
13	710-0788	15	/P	Screw, Hex Wash TT-Tapp 1/4-20 X 1.0 Lg
14	737-3053	1	S	Plug, Magnetic, 1/2-14 NPTF
15	715-3038	2		Pin, Slotted Spring, 7/16 X 1.0 Lg
16	741-0361	3	S	Bearing, Ball
17	736-3101	1		Washer, Flat, .68 X 1.25 X .060 Thk
18	717-3353	1		Gear, 27T Drive, Sixth
19	717-3354	1		Gear, 23T Drive, Fifth
20	717-3344	1	S	Gear, 20T Drive, Fourth
21	717-3351	1		Gear, 17T Drive, Third
22	717-3352	1		Gear, 15T Drive, Second
23	717-3349	1		Shaft, Drive w/First
24	736-3123	1	S	Washer, Flat, .765 X 1.125 X .030 Thk
25	736-3122	1		Washer, Wave, .79 X .99 X .012 Thk
26	717-3347	1		Gear, 36T Bevel
27	717-3350	1		Gear, 14T Reduction
28	717-3357	1	S	Gear, 18T Shift, Sixth
29	717-3358	1		Gear, 22T Shift, Fifth
30	717-3359	1		Gear, 24T Shift, Fourth
31	717-3360	1		Gear, 27T Shift, Third
32	717-3361	1		Gear, 40T Shift, Second
33	717-3362	1		Gear, 58T Shift, First
34	750-0991	1	/P	Spacer, Neutral
35	710-1180	1		Block, Differential Pinion
36	718-3029	1		Collar, LH, Shift
37	718-3030	2		Spacer, Shift Key
38	712-3009	1	S	Nut, Hex Center Lock, 5/16-18 GR5
39	736-0371	1	/P	Washer, Flat, .343 X .875 X .062 Thk
40	718-3021	1		Arm, Key Shifter
41	750-3104	1		Spacer, 3/16 ID X .440 OD X .263 Lg

2140 Tractor S/N 239,001 - 326,005  
6-Speed Transmission

Page 7 of 76

Ref #	Part Number	Qty	S/P/F	Description
42	710-0376	1	/P	Screw, Hex Cap, 5/16-18 X 1.0 Lg
43	710-0573	1		Screw, Hex Cap, 5/16-18 X 1.25 Lg GR5
44	718-3028	1		Collar, RH, Shift
45	710-3245	3		Screw, Socket Hd Cap #10-32 X 1.25 Lg
46	732-3074	1		Spring, Shift Key
47	714-3028	3		Key, Shift
48	715-3044	3		Pin, Dowel, 3/16 X 7/8 Lg
49	711-3403	1	S	Shaft, Shift
50	736-3119	1		Washer, Wave, .84 X 1.12 X .01 6 Thk
51	741-3057	3	S	Bearing, Ball, .787 X 1.85 X .551 Thk
52	717-3345	1		Gear, 44T Reduction
53	717-3346	1		Shaft, 9T Output
54	741-3037	2	S	Bearing, Ball
55	710-0151	4	/P	Screw, Hex Cap, 3/8-24 X 2.0 Lg
56	619-3013	2		Cover, Differential
57	736-0423	AR		Washer, Flat, 1.0 X 1.56 X .010 Thk
58	736-0431	AR	S	Washer, Flat, 1.0 X 1.56 X .015 Thk
59	736-0424	AR	S	Washer, Flat, 1.0 X 1.56 X .020 Thk
60	736-0420	AR	S	Washer, Flat, 1.0 X 1.56 X .040 Thk
61	717-1159	1		Gear, 60T Bull
62	717-1119	2		Gear, 14T Differential Side
63	717-1190	4		Block, Differential Thrust
64	717-1120	4		Gear, 10T Differential Pinion
65	717-1178	2		Shaft, Cross
66	717-1173	1		Shaft, Cross, .500 OD X 3.485 Lg
67	712-3054	4	/P	Nut, Hex Lock, 3/8-24
68	710-3013	1	/P	Screw, Hex Cap, 1/4-20 X .50 Lg GR5
69	736-0270	1	/P	Washer, Bell, .265 X .75 X .062 Thk
70	703-2180	2		Support, Interlock Shaft
71	711-3341	1		Shaft, Interlock Shift
72	718-3020	1		Interlock, Shift
73	710-3276	2		Screw, Socket Hd Cap 1/4-20 X 1.0 Lg
74	721-3033	2		O-Ring, 1/2 ID X 5/8 OD
75	741-0862	1	/P	Ball, Detent, .250 Dia
76	732-0863	1	S	Spring, Detent
77	618-3031	1		Arm Assy, Shift
78	712-3051	2	/P	Nut, Hex Top Lock, 1/4-20
79	721-3029	1	S	Seal, Shift Shaft
80	761-3019	1		Drum, Brake
81	732-3077	1		Spring, Brake
82	761-3020	2	S	Shoe, Brake
83	732-0152	1		Spring, Compression
84	703-2191	1		Arm, Brake
85	618-3060	1	S	Plate, Brake
86	761-3028	1		Actuator, Brake Shoe
87	710-3262	1		Screw, Low Hd Cap 3/8-16 X .75 Lg
88	611-3009	1		Axle Assy, RH, 15.6" Lg
89	619-3024	1		Housing, RH, Axle
	759-3746	1		Sealant, Ultra Grey, 2 oz tube
90	715-0129	1	/P	Pin, Spirol, 1/8 Dia X .812 Lg
91	718-3036	1		Arm, Interlock Shift
92	710-0642	1	/P	Screw, Hex Wash TT-Tapp, 1/4-20 X .75 Lg
93	716-0171	1	S	Ring, Retainer