

## VIN PLATE DECODING INFORMATION

1	2	3	4	5	6	7	8	9	10	11	12 thru 17
Country	Make	Vehicle Type	Other	Line	Series	Body Style	Engine	Check Digit	Model Year	Assy. Plant	Sequence No.

The following table interprets the VIN Plate position shown above.

Position	Interpretation	Codes = Description
1	Country of Origin	1 = Built in U.S. by Chrysler Corporation 3 = Built in Mexico by Chrysler de Mexico
2	Assembler	B = Dodge C = Chrysler P = Plymouth
3	Vehicle Type	3 = Passenger Car
4	GVWR & Pass. Safety	E = Restraint System Active Driver & Passenger Air Bag
5	Vehicle Line	S = Neon & Neon Sport
6	Series	2 = Low Line 4 = High Line 6 = Sport
7	Body Style	2 = 2 Door Pillared Hardtop (22) 7 = 4 Door Pillared Hardtop (42)
8	Engine	C = 2.0L 4 Cyl. 16V Gasoline (SFI) SOHC (ECB) Y = 2.0L 4 Cyl. 16V Gasoline (SFI) DOHC (ECC) A = 1.8L 4 Cyl. 16V SOHC Gasoline (SFI) (EBD)
9	Check Digit	0 = Check Digit 0 = Check Digit
10	Model Year	V = 1997 W = 1998 X = 1999
11	Assembly Plant	D = Belvidere T = Toluca
12 thru 17	Vehicle Build Sequence	Model Year Assembly Sequence

# Group - 2

## Front Suspension & Drive

### Group - 2 Front Suspension & Drive

Group-Fig. No.

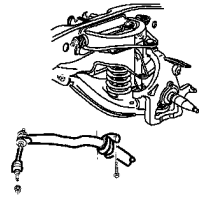
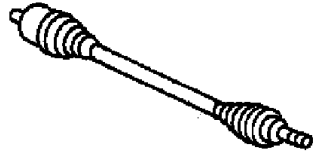
Illustration Title

#### Front Suspension

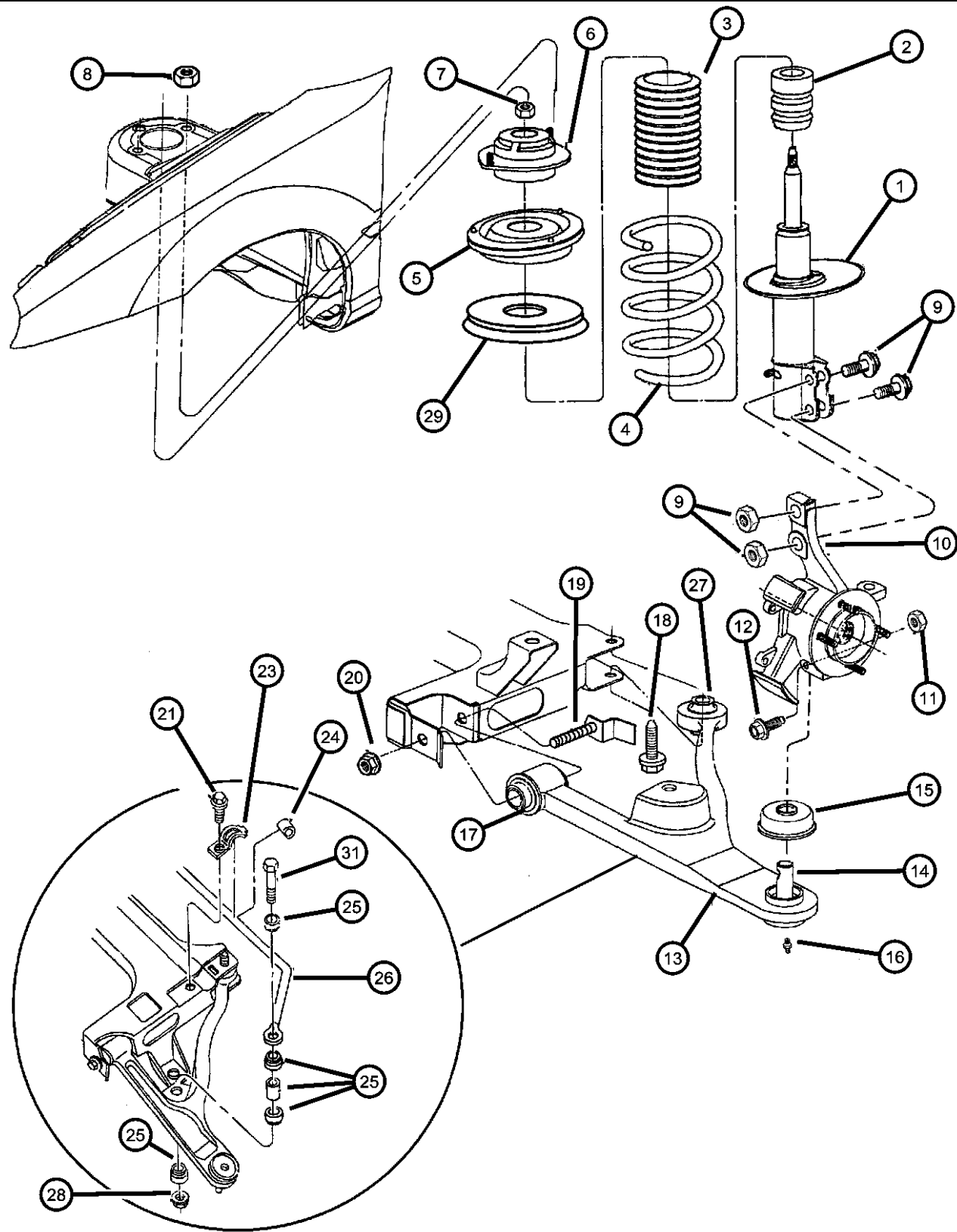
Suspension, Front..... Fig. 2 - 105

#### Front Axle Drive Shafts

Shaft, Front Drive ..... Fig. 2 - 205

<p><b>002-100</b> Front Suspension</p> 	<p><b>002-200</b> Front Axle Drive Shafts</p> 		
--	---	--	--

Suspension, Front  
Figure 2-105



ITEM	PART NUMBER	QTY	LINE	SERIES	BODY	ENGINE	TRANS	TRIM	DESCRIPTION
------	-------------	-----	------	--------	------	--------	-------	------	-------------

Sales Code:  
 [SDC]=Touring Suspension  
 [SDE]=Wishbone Handling  
 [SDF]= European Homologation Suspension  
 [SDK]=Competition Suspension  
 NOTE: Sales Code ZCC thur ZRJ=Spring Group Types Found on Individual Vehical Sales Code Listing

1									STRUT, Front Suspension
	04626681	2	D, P						[SDC]
	0SG81959								Mopar V-Line Alternative Part
	04626778	2							[SDF] EXPORT
	0SG81959								Mopar V-Line Alternative Part
	04626835	2	D, P						[SDE]
	0SG81959								Mopar V-Line Alternative Part
	04656356	2	D, P						[SDK]
2	04626830	2							BUMPER, Jounce, w/European Suspension (SDF), w/Competition Suspension (SDK)
3	04626098	2							SHIELD, Shock Absorber Dust
4									SPRING, Front Coil
	05273401	1	D, P						w/Firm Feel Suspension (SDC), Tag#401 (ZCA, ZRA)
	05273402	1	D, P						w/Firm Feel Suspension (SDC), Tag#402 (ZCB,ZRB)
	05273403	1	D, P						w/Firm Feel Suspension (SDC), Tag# 403 (ZCC,ZRC)
	05273404	1	D, P						w/Firm Feel Suspension (SDC), Tag#404 (ZCD,ZRD)
	05273405	1	D, P						w/Firm Feel Suspension (SDC), Tag#405 (ZCE,ZRE)
	05273406	1	D, P						w/Firm Feel Suspension (SDC), Tag# 406 (ZCF,ZRF)
	05273407	1	D, P						w/Firm Feel Suspension (SDC), Tag# 407 (ZCG,ZRG)
	05273408	1	D, P						w/Firm Feel Suspension (SDC), Tag# 408 (ZCH,ZRH)
	05273409	1	D, P						w/Firm Feel Suspension (SDC), Tag# 409 (ZCJ,ZRT)
	05273411	1							w/European (SDF), w/Competition Suspension (SDK), Tag# 411 (ZAA,ZNA)

NEON (US) SX 2.0 (CANADA) (PL)

SERIES LINE  
 L = LOWLINE D = DODGE  
 H = HIGHLINE P = PLYMOUTH  
 S = SPECIAL Z = CHRYSLER (RHD)  
 D = CHRYSLER

BODY  
 41 = 4 DOOR, 104WB

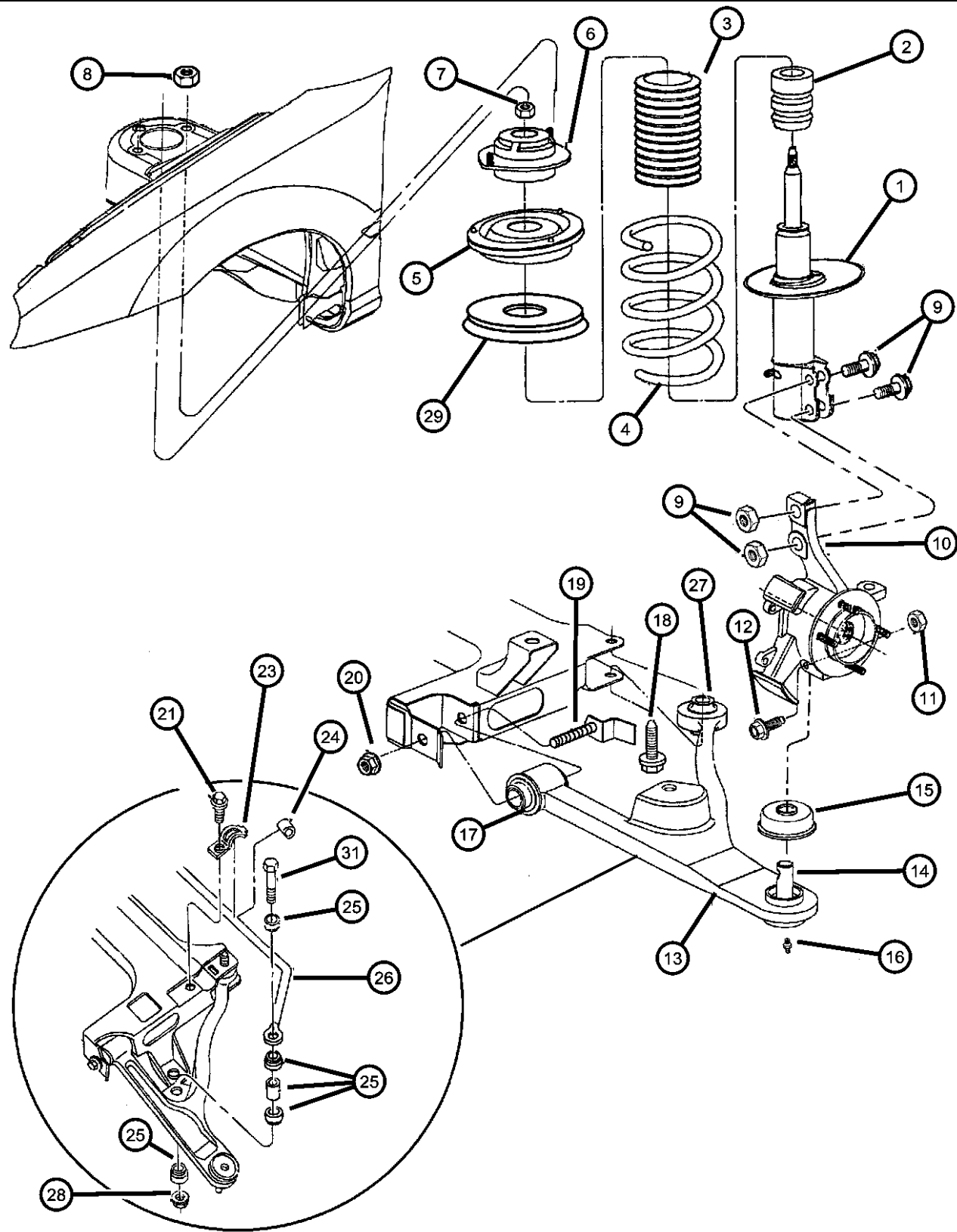
ENGINE  
 EBD = 1.8L 4 Cyl SOHC 16V SEFI Engine  
 ECB = 2.0L 4 Cyl SOHC 16V SMPI Engine  
 EJD = 1.6L 4 Cyl 16V SOHC

TRANSMISSION  
 DD5 = 5-Speed Manual Transmission  
 DGC = 3-Speed Automatic Transmission  
 DGL = 4-Speed Automatic Transmission  
 DGO = All Automatic Transmissions  
 DBB = All 5 Speed Manual Transmissions

AR = use ase required - = Non illustrated part

1998 PL

Suspension, Front  
Figure 2-105



ITEM	PART NUMBER	QTY	LINE	SERIES	BODY	ENGINE	TRANS	TRIM	DESCRIPTION
	05273412	1							w/European (SDF), w/Competition Suspension (SDK), Tag# 412 (ZAB,ZNB)
	05273413	1							w/European (SDF), w/Competition Suspension (SDK) Tag# 413 (ZAC,ZNC)
	05273414	1							w/European (SDF) w/Competition Suspension (SDK) Tag# 414 (ZAD,ZND)
	05273415	1							w/European (SDF) w/Competition Suspension (SDK) Tag# 415 (ZAE,ZNE)
	05273416	1							w/European (SDF) w/Competition Suspension (SDK) Tag# 416 (ZAF,ZNF)
	05273417	1							w/Standard Suspension (SDA) , w/European (SDF), w/Competition Suspension (SDK) Tag# 417 (ZNG,ZAG)
	05273418	1							w/Europen (SDF) w/Competition Suspension (SDK) Tag# 418 (ZAH,ZNH)
5	04626864	2							SEAT, Spring
6	04626100	2							MOUNT, Strut
7	06501094	2							NUT, Hex Lock, M14 x 2.00, Strut to Mount
8	06101446	6							NUT AND WASHER
		2							Mount to Fender M8x1.25x13
9	04762135	4							BOLT PACKAGE, Camber Adjustment
10									KNUCKLE, Front
	04897662AA	1							Right
	04897663AA	1							Left
11	06501247	2							NUT, M12x1.75
12	06501248	2							BOLT, Hex Flange Head, M12x1.75x57
13									ARM, Control
	04509774	1							Right
	04509775	1							Left

NEON (US) SX 2.0 (CANADA) (PL)  
 SERIES LINE  
 L = LOWLINE D = DODGE  
 H = HIGHLINE P = PLYMOUTH  
 S = SPECIAL Z = CHRYSLER (RHD)  
 D = CHRYSLER

BODY  
 41 = 4 DOOR, 104WB

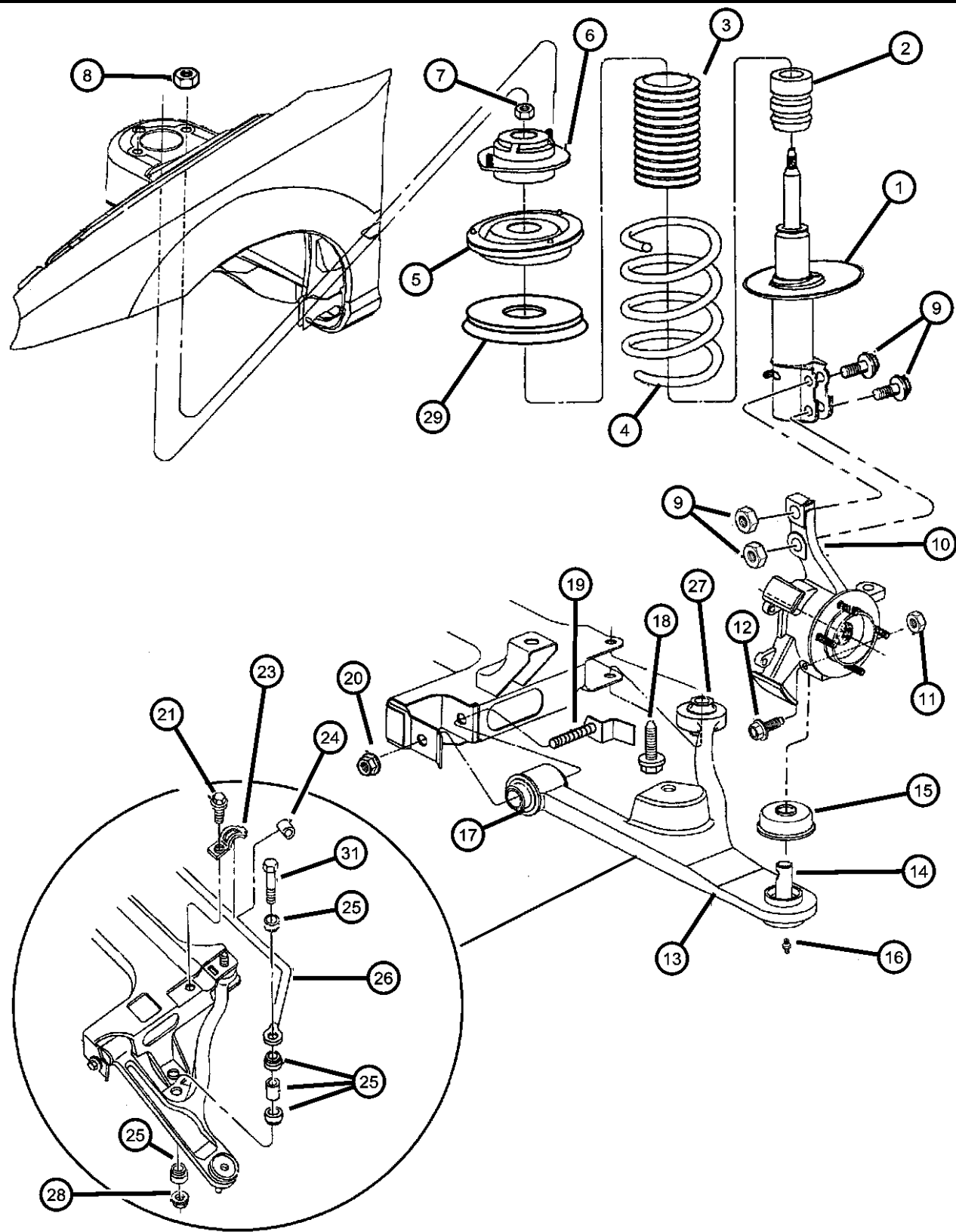
ENGINE  
 EBD = 1.8L 4 Cyl SOHC 16V  
 SEFI Engine  
 ECB = 2.0L 4 Cyl SOHC 16V  
 SMPI Engine  
 EJD = 1.6L 4 Cyl 16V SOHC

TRANSMISSION  
 DD5 = 5-Speed Manual Transmission  
 DGC = 3-Speed Automatic  
 Transmission  
 DGL = 4-Speed Automatic  
 Transmission  
 DGO = All Automatic Transmissions  
 DBB = All 5 Speed Manual  
 Transmissions

AR = use ase required - = Non illustrated part

1998 PL

Suspension, Front  
Figure 2-105



ITEM	PART NUMBER	QTY	LINE	SERIES	BODY	ENGINE	TRANS	TRIM	DESCRIPTION
14	04449553	1							BALL JOINT, Lower Control Arm
15	04052509	2							SEAL, Ball Joint
16	06030099	1							FITTING, Ball Joint, Zirc
17	04626447	1							BUSHING, Lower Control Arm
18	06502922	2							SCREW
19	06503068	2							BOLT, Hex Head, M14
20	06502502	2							NUT, Hex Flange Lock, M14x2
21	06503292	2							SCREW, Hex Head, M8x1.25x50
-22	06101695	2							NUT, Hex Flange Lock, M8x1.25, Sway Bay Mount
23	04626762	2							CLAMP, Stabilizer Bar
24	04626368	2							CUSHION, Sway Eliminator
25	04656351AA	2							LINK PACKAGE, Stabilizer Bar
26	04626109	1	D, P						BAR, Front Sway, w/Firm Feel Suspension (SDC)
27	04509719	1							BUSHING, Lower Control Arm
28	06101695	2							NUT, Hex Flange Lock, M8x1.25, Sway Bar Shaft Link
29	04626096	2							ISOLATOR, Spring Seat
-30	06500615	2	D, P						NUT AND WASHER, Hex Nut-Coned Washer, M10 x 1.5, w/Competition Suspension (SDK) For Strut Knuckle Upper
31	06502715	2							SCREW, Hex Head, M8x1.25x50
-32	04668361AA	1							PLATE, Suspension, Retainer, Knuckle
-33	06500544	1							SCREW, Hex Head, M8x1.25x20, Plate, Retainer Knuckle
-34	04656080	1							KNOB KIT, Strut Self Adjustment
-35	04626777	1							BAR, Rear Sway, Not Rear Front w/Special Sport suspension (SDE) w/European suspension (SDF) w/Competition Suspension (SDK)

NEON (US) SX 2.0 (CANADA) (PL)

SERIES LINE  
 L = LOWLINE D = DODGE  
 H = HIGHLINE P = PLYMOUTH  
 S = SPECIAL Z = CHRYSLER (RHD)  
 D = CHRYSLER

BODY  
 41 = 4 DOOR, 104WB

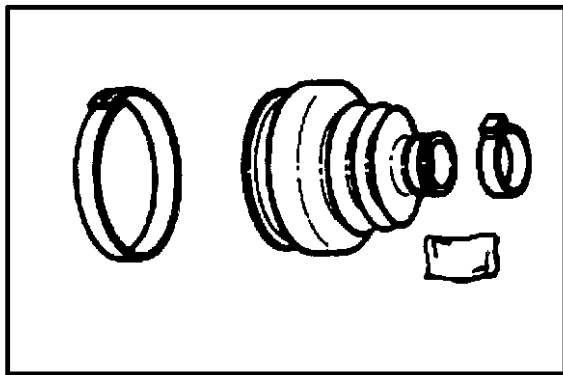
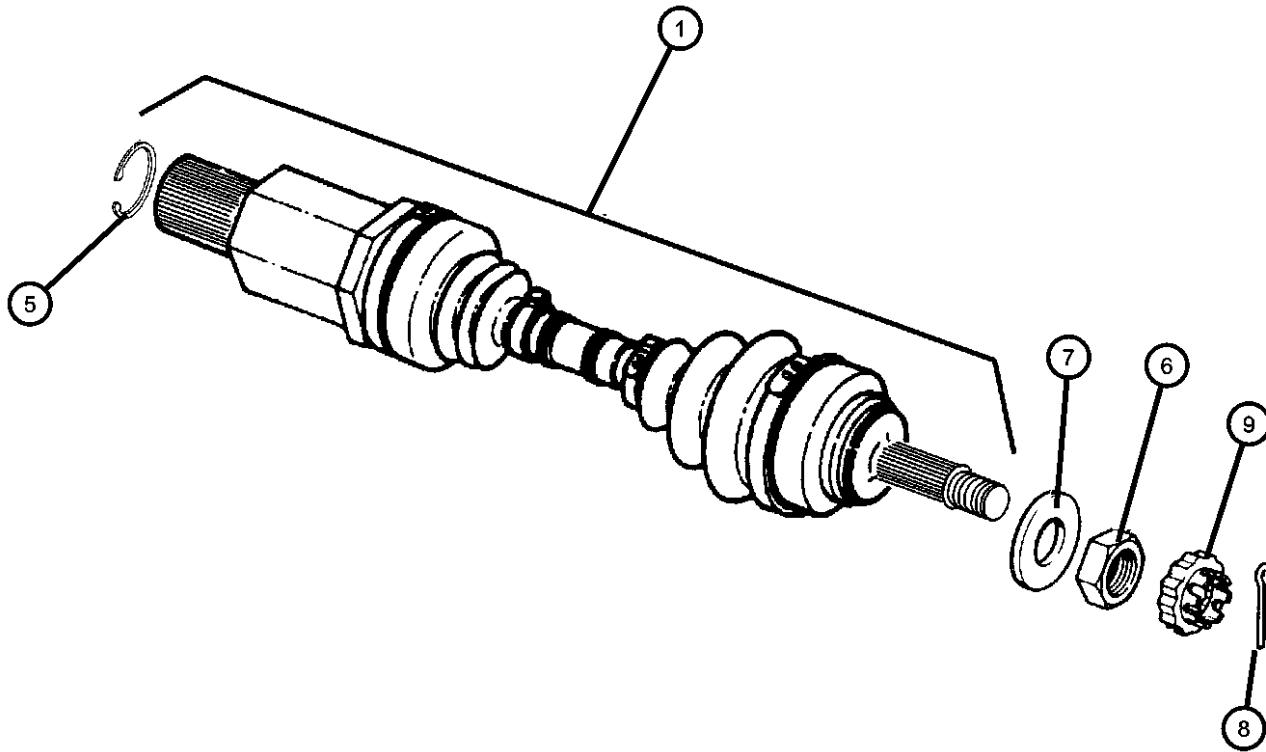
ENGINE  
 EBD = 1.8L 4 Cyl SOHC 16V SEFI Engine  
 ECB = 2.0L 4 Cyl SOHC 16V SMPI Engine  
 EJD = 1.6L 4 Cyl 16V SOHC

TRANSMISSION  
 DD5 = 5-Speed Manual Transmission  
 DGC = 3-Speed Automatic Transmission  
 DGL = 4-Speed Automatic Transmission  
 DGO = All Automatic Transmissions  
 DBB = All 5 Speed Manual Transmissions

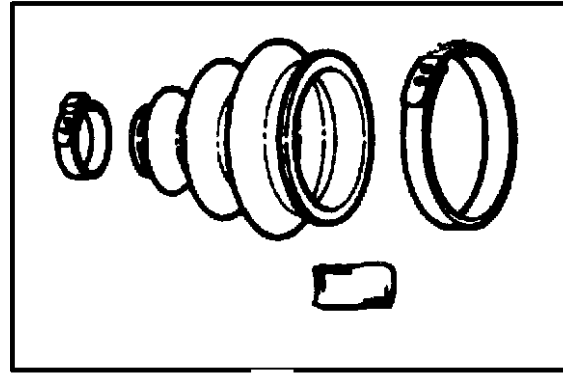
AR = use ase required - = Non illustrated part

1998 PL

Shaft, Front Drive  
Figure 2-205



3



4

ITEM	PART NUMBER	QTY	LINE	SERIES	BODY	ENGINE	TRANS	TRIM	DESCRIPTION
------	-------------	-----	------	--------	------	--------	-------	------	-------------

Note: WARNING! Reduced Braking performance will result if this part is used on earlier model vehicles and an accident could result. Do not use on earlier model vehicles.  
 Note: Sales Code DD4= 5 Sp. Manual Trans. (Performance)  
 Note: Sales Code DD5= 5 Sp. Manual Trans.  
 Note: Sales Code DGC= 3 Sp. Auto. Trans.

1									SHAFT, Axle Half
	04668800AB	1					DD4, DD5		Right with Manual Trans with out ABS
	04668801AB	1					DD4, DD5		Left with Manual Trans with out ABS
	05003484AA	1					DD4, DD5		Right with Manual Trans with ABS (See Note).
	R2073387								Mopar Remanufactured Part
	05003485AA	1					DD4, DD5		Left with Manual Trans with ABS (See Note)
	R2073397								Mopar Remanufactured Part
-2									SHAFT, Axle Half
	04668804AB	1					DGC		Right with Auto Trans with out ABS
	04668805AB	1					DGC		Left with Auto Trans with out ABS
	05003486AA	1					DGC		Right with Auto Trans with ABS (See Note)
	R2073386								Mopar Remanufactured Part
	05003487AA	1					DGC		Left with Auto Trans with ABS (See Note)
	R2073396								Mopar Remanufactured Part
3									BOOT KIT, Half Shaft, Inner
	04762494	1							Right with or with out ABS
	04762495	1							Left with or with out ABS
4	04762496	2							BOOT KIT, Half Shaft, Outer, Right or Left with or with out ABS
5	04797704	2							CIRCLIP, Half Shaft
6	06503595	2							NUT, Hex, M20x1.5
7	06503596	2							WASHER, Flat, M21x38x4
8	06500336	2							PIN, Cotter, M5x36.00
9	04293167	2							NUT AND WASHER PACKAGE, Front Hub

NEON (US) SX 2.0 (CANADA) (PL)

SERIES LINE  
 L = LOWLINE D = DODGE  
 H = HIGHLINE P = PLYMOUTH  
 S = SPECIAL Z = CHRYSLER (RHD)  
 D = CHRYSLER

BODY  
 41 = 4 DOOR, 104WB

ENGINE  
 EBD = 1.8L 4 Cyl SOHC 16V SEFI Engine  
 ECB = 2.0L 4 Cyl SOHC 16V SMPI Engine  
 EJD = 1.6L 4 Cyl 16V SOHC

TRANSMISSION  
 DD5 = 5-Speed Manual Transmission  
 DGC = 3-Speed Automatic Transmission  
 DGL = 4-Speed Automatic Transmission  
 DGO = All Automatic Transmissions  
 DBB = All 5 Speed Manual Transmissions

AR = use ase required - = Non illustrated part

1998 PL

# Group - 4

## Parking Brake

### Group - 4 Parking Brake

Group-Fig. No.

Illustration Title

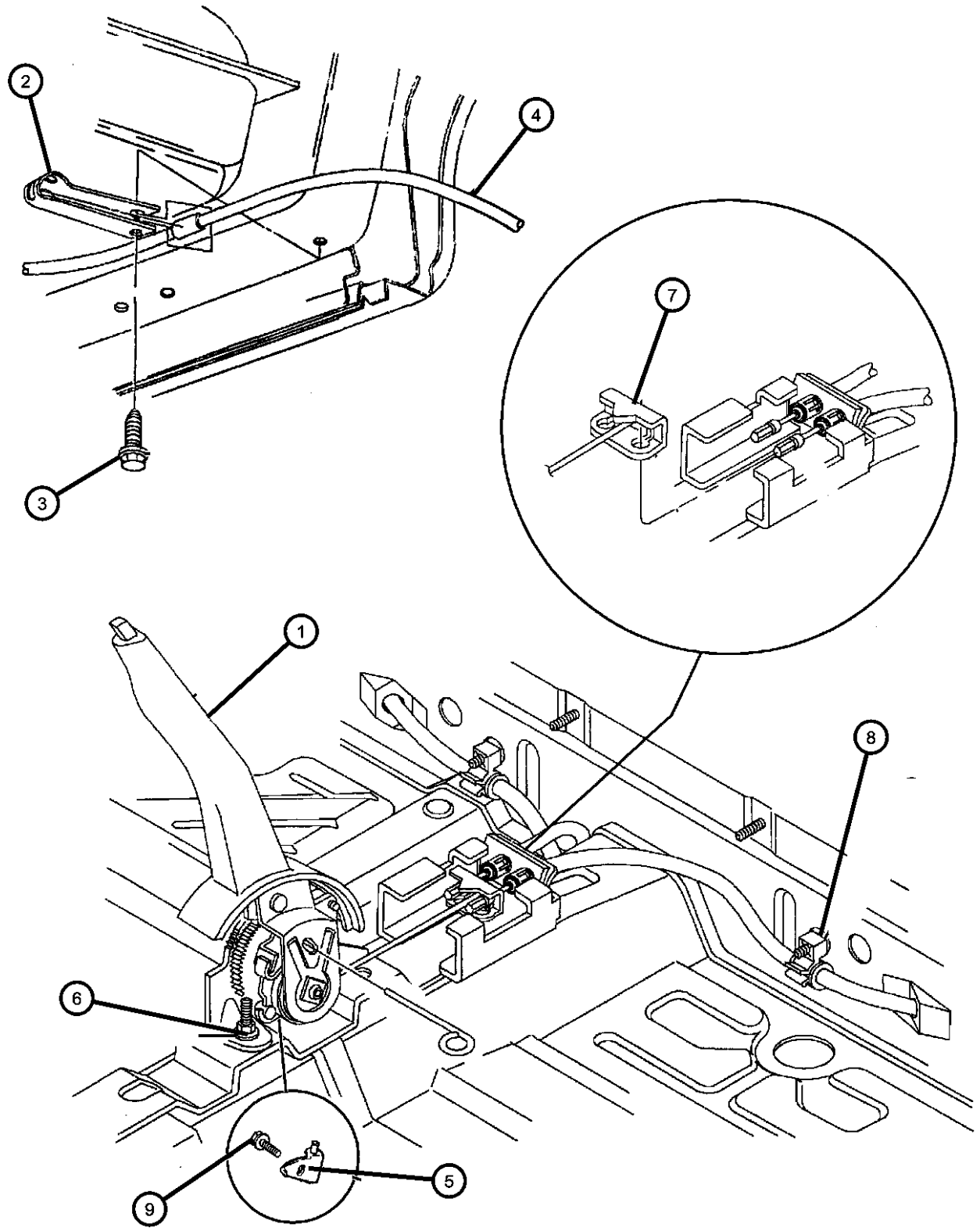
#### Parking Brake Lever and Cables

Lever and Cables ..... Fig. 4 - 105

**004-100**  
Parking Brake Lever and Cables



**Lever and Cables  
Figure 4-105**



ITEM	PART NUMBER	QTY	LINE	SERIES	BODY	ENGINE	TRANS	TRIM	DESCRIPTION
1	04509637	1							LEVER, Park Brake
2	04509488	2							CLIP, Parking Brake Cable
3	06503270	2							SCREW, Hex Head, M8x1.25x30, Parking Brake Att Rail
4									CABLE, Parking Brake
	04509633	2							Rear with Disc/Drum with or with out ABS (With End)
	05273636	2							Rear with Disc/Disc with or with out ABS (With End)
5	05209922	1							SWITCH, Parking Brake
6	05209922	1							NUT, Flex-Flg with Locking Serrations Park Brake M8x1.25, (NOT SERVICED)
7	05209922	1							EQUALIZER, Parking Brake Cable, (Service in Lever Assembly), (NOT SERVICED)
8	05209922	1							CLIP, (Service with Cable), (NOT SERVICED)
9	05209922	1							SCREW, Tap/Hex Flg Hd Light Switch to Parking Brake Lever Mount .190-24x.750, (NOT SERVICED)

**NEON (US) SX 2.0 (CANADA) (PL)**  
 SERIES LINE  
 L = LOWLINE D = DODGE  
 H = HIGHLINE P = PLYMOUTH  
 S = SPECIAL Z = CHRYSLER (RHD)  
 D = CHRYSLER

BODY  
 41 = 4 DOOR, 104WB

ENGINE  
 EBD = 1.8L 4 Cyl SOHC 16V  
 SEFI Engine  
 ECB = 2.0L 4 Cyl SOHC 16V  
 SMPI Engine  
 EJD = 1.6L 4 Cyl 16V SOHC

TRANSMISSION  
 DD5 = 5-Speed Manual Transmission  
 DGC = 3-Speed Automatic  
 Transmission  
 DGL = 4-Speed Automatic  
 Transmission  
 DGO = All Automatic Transmissions  
 DBB = All 5 Speed Manual  
 Transmissions

AR = use ase required - = Non illustrated part



# Group - 5

## Service Brakes

### Group - 5 Service Brakes

Illustration Title

Group-Fig. No.

#### Front Brakes

Brakes, Front ..... Fig. 5 - 105

#### Rear Brakes

Brakes, Rear Drum..... Fig. 5 - 205

Brakes, Rear Disc..... Fig. 5 - 207

#### Power Brake Booster

Booster, Power Brake..... Fig. 5 - 305

#### Brake Master Cylinder

Master Cylinder..... Fig. 5 - 405

Anti-Lock Brake Control ..... Fig. 5 - 410

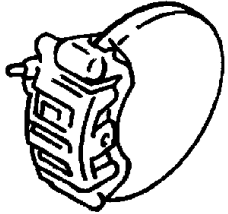
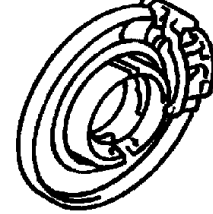
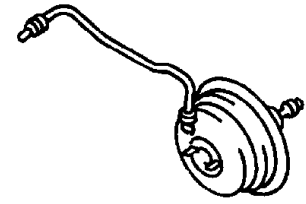
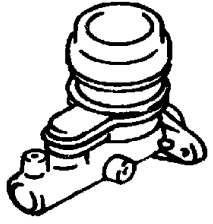
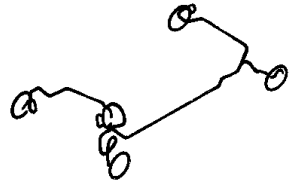

#### Brake Lines and Hoses

Lines and Hoses, Brake w/o Anti-Lock Brakes ..... Fig. 5 - 505

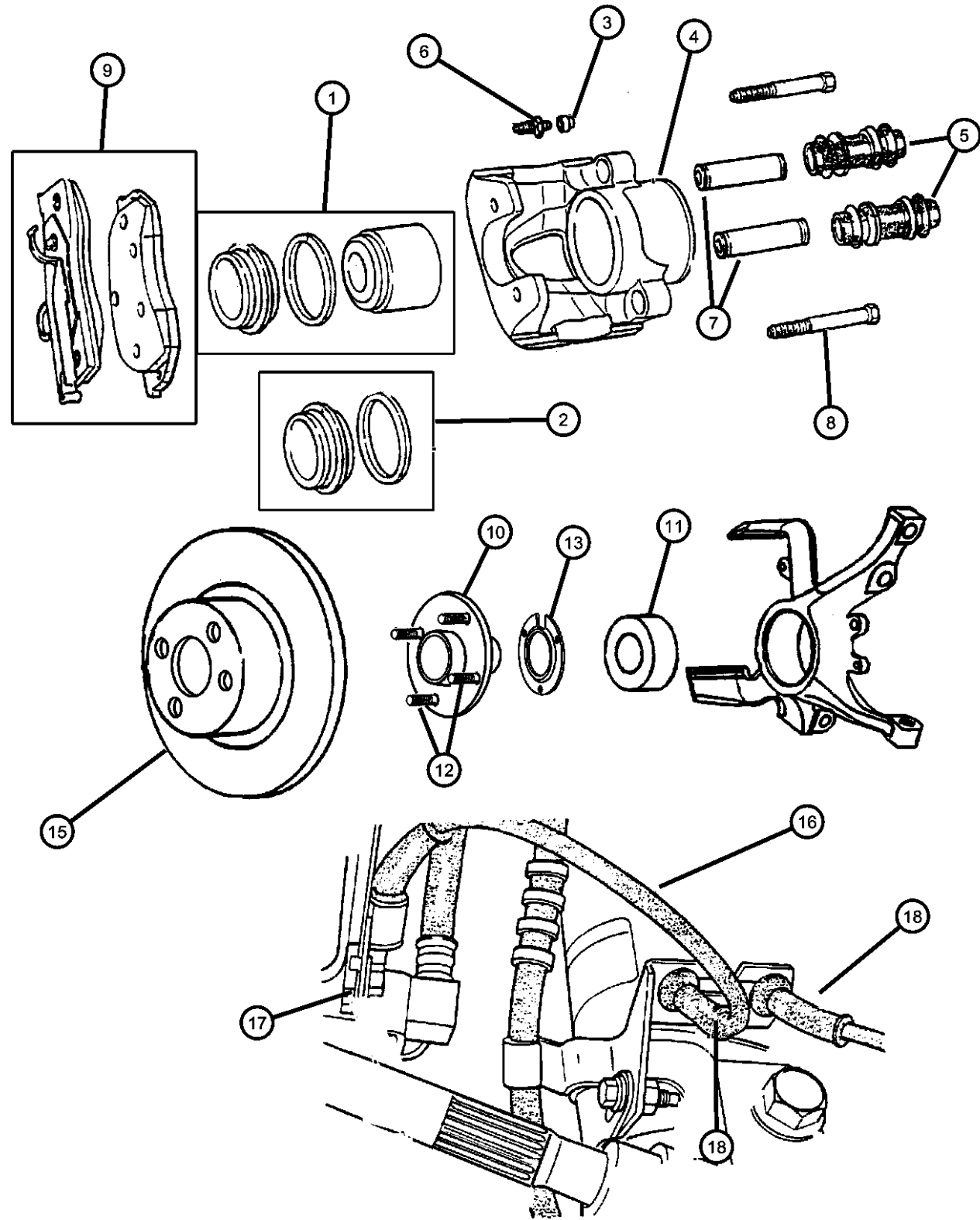
Lines and Hoses, Brake w/Anti-Lock Brakes..... Fig. 5 - 545

#### Brake Pedals

Pedal, Brake..... Fig. 5 - 605

<p><b>005-100</b> Front Brakes</p> 	<p><b>005-200</b> Rear Brakes</p> 	<p><b>005-300</b> Power Brake Booster</p> 	<p><b>005-400</b> Brake Master Cylinder</p> 
<p><b>005-500</b> Brake Lines and Hoses</p> 	<p><b>005-600</b> Brake Pedals</p> 		

**Brakes, Front**  
**Figure 5-105**



ITEM	PART NUMBER	QTY	LINE	SERIES	BODY	ENGINE	TRANS	TRIM	DESCRIPTION
------	-------------	-----	------	--------	------	--------	-------	------	-------------

Note: Sales Code BRA= Disc/Drum  
 Note: Sales Code BRX= Disc/Drum (Export)  
 Note: Sales Code BRD= Disc/Disc  
 Note: Sales Code BRF= Disc/Disc w/ABS  
 Note: Sales Code ACR= Competition Package

1	04762551	1							PISTON KIT, DISC BRAKE
2	04364779	1							BOOT AND SEAL, Disc Brake
3	04238717	1							CAP, Bleeder
4									CALIPER, Disc Brake
	05011070AA	1			D, P				Right BRA Zinc Coated
	05011071AA	1			D, P				Left BRA Zinc Coated
	05011072AA	1							Right BRD,BRF,BRX Black Coated
	05011073AA	1							Left BRD,BRF,BRX Black Coated
5	04383471	1							BUSHING, Disc Brake Caliper
6	03780788	1							BLEEDER SCREW, Brake
7	04423573	1							SLEEVE, Disc Brake Caliper
8	06502527	4							BOLT, Hex Flange Head, M8-1.25x68.50, (Pin)
9									PAD KIT, Front Disc Brake
	05011067AA	1							BRD,BRF,BRX]
	V3011682								Mopar V-Line Alternative Part Ceramic
	VCPL9518								Make It Ceramic Brake Kit
	BHKH5593								Mopar V-Line Alternative Part Disc Hardware
	BHKH5066								Mopar V-Line Alternative Part Caliper Bolts
	V1013527AB								Mopar V-Line Alternative Part
	05011069AA	1			D, P				[BRA]
	V3011682								Mopar V-Line Alternative Part Ceramic
	BHKH5593								Mopar V-Line Alternative Part Disc Hardware
	BHKH5066								Mopar V-Line Alternative Part Caliper Bolts
	V1013438AB								Mopar V-Line Alternative Part
	VPL09598								Make It New Brake Kits

**NEON (US) SX 2.0 (CANADA) (PL)**

SERIES LINE  
 L = LOWLINE D = DODGE  
 H = HIGHLINE P = PLYMOUTH  
 S = SPECIAL Z = CHRYSLER (RHD)  
 D = CHRYSLER

BODY  
 41 = 4 DOOR, 104WB

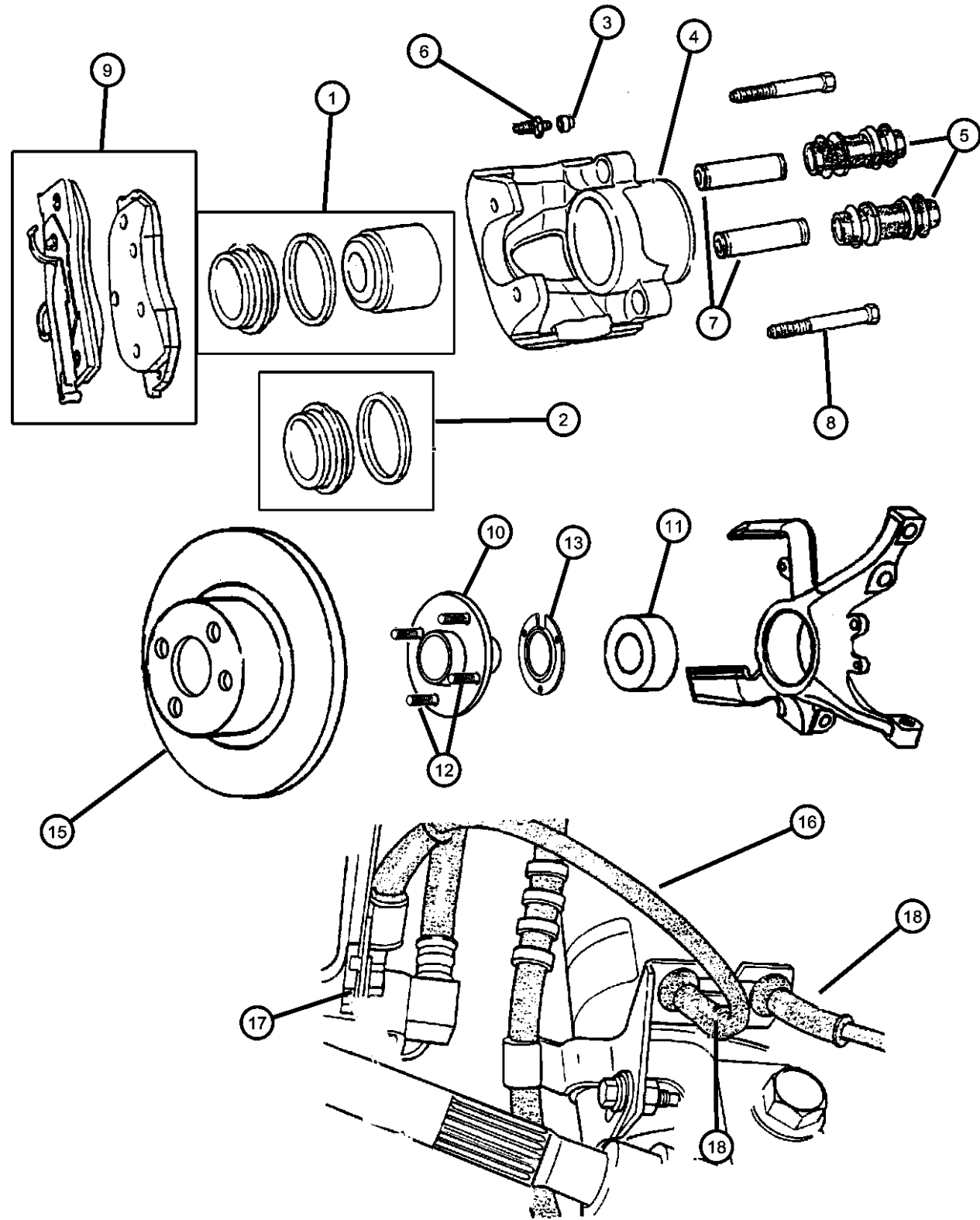
ENGINE  
 EBD = 1.8L 4 Cyl SOHC 16V SEFI Engine  
 ECB = 2.0L 4 Cyl SOHC 16V SMPI Engine  
 EJD = 1.6L 4 Cyl 16V SOHC

TRANSMISSION  
 DD5 = 5-Speed Manual Transmission  
 DGC = 3-Speed Automatic Transmission  
 DGL = 4-Speed Automatic Transmission  
 DGO = All Automatic Transmissions  
 DBB = All 5 Speed Manual Transmissions

AR = use ase required - = Non illustrated part

1998 PL

Brakes, Front  
Figure 5-105



ITEM	PART NUMBER	QTY	LINE	SERIES	BODY	ENGINE	TRANS	TRIM	DESCRIPTION
	VCPL9518								Make It Ceramic Brake Kit
10									HUB, Wheel
	04670287	1							Five Stud (BRA, BRD, BRF, BRX)
	04670292	1							Five Stud (ACR)
11	04641120	1							BEARING, Wheel
12	06501053	5							STUD, Hub, M12x1.50x41.50
13	04668361AB	1							RETAINER
-14	06505230AA	3							SCREW, Hex Head, M8x1.25x20, Retainer Attaching
15	04509718	2							ROTOR, Brake, Five Stud (BRA, BRD, BRF, BRX)
16									SENSOR, Anti-Lock Brakes
	05273226	1							Right
	05273227	1							Left
17	05273227	1							CLIP, Anti-Lock Brake System, (NOT REQUIRED),
18	05273227	1							GROMMET, Speed Sensor Cable (Service with Sensor), (NOT SERVICED)
-19	04897662AA	1							KNUCKLE, Front

NEON (US) SX 2.0 (CANADA) (PL)  
 SERIES LINE  
 L = LOWLINE D = DODGE  
 H = HIGHLINE P = PLYMOUTH  
 S = SPECIAL Z = CHRYSLER (RHD)  
 D = CHRYSLER

BODY  
 41 = 4 DOOR, 104WB

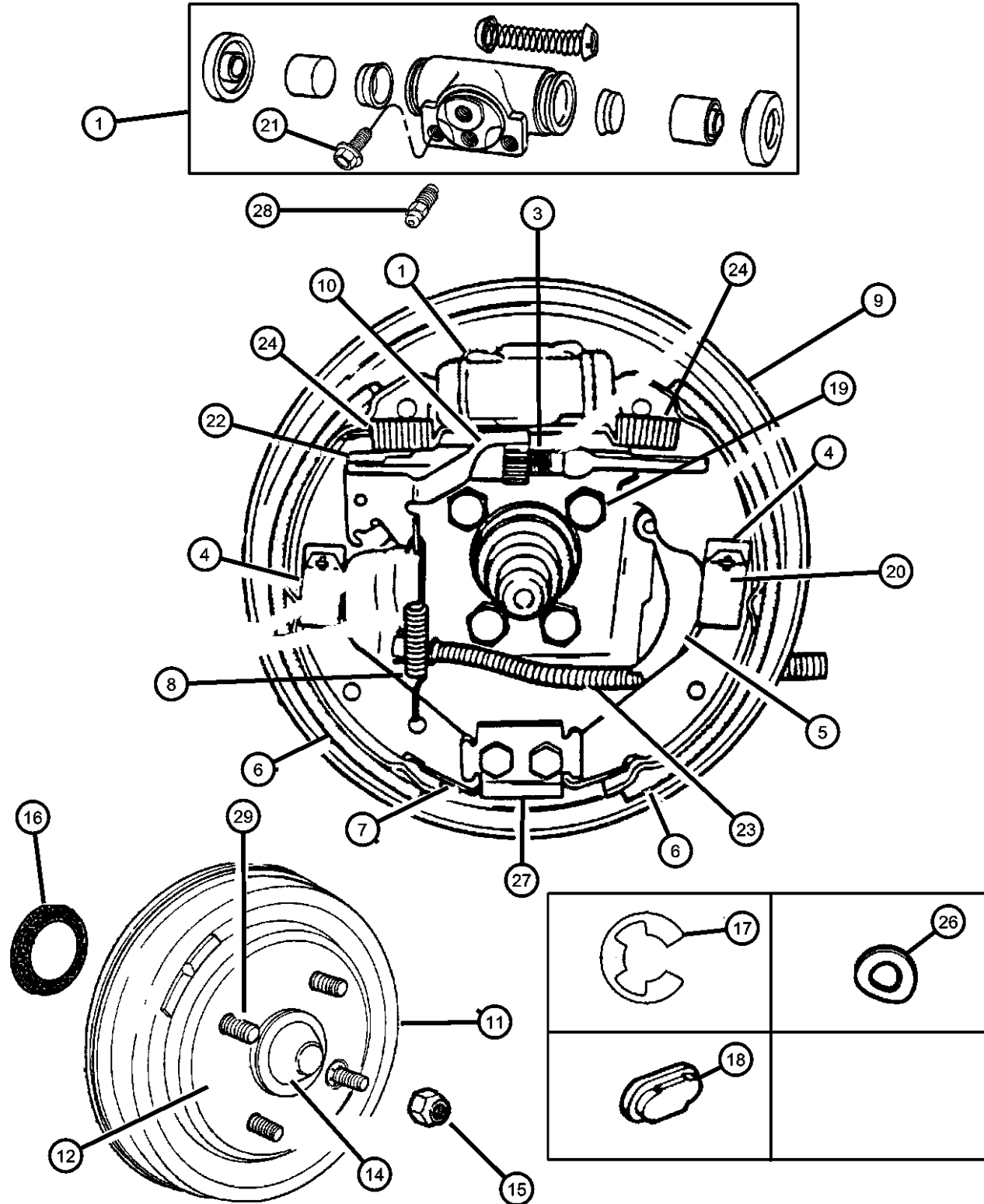
ENGINE  
 EBD = 1.8L 4 Cyl SOHC 16V SEFI Engine  
 ECB = 2.0L 4 Cyl SOHC 16V SMPI Engine  
 EJD = 1.6L 4 Cyl 16V SOHC

TRANSMISSION  
 DD5 = 5-Speed Manual Transmission  
 DGC = 3-Speed Automatic Transmission  
 DGL = 4-Speed Automatic Transmission  
 DGO = All Automatic Transmissions  
 DBB = All 5 Speed Manual Transmissions

AR = use ase required - = Non illustrated part

1998 PL

Brakes, Rear Drum  
Figure 5-205



ITEM	PART NUMBER	QTY	LINE	SERIES	BODY	ENGINE	TRANS	TRIM	DESCRIPTION
Note: Sales Code BRA= Disc/Drum Note: Sales Code BRX= Disc/Drum (Export)									
1	04762296 V2102296AA	1							CYLINDER, Wheel Mopar V-Line Alternative Part Wheel Cylinder
-2	04238717	1							CAP, Bleeder
3	04238728	1							SOCKET, Brake Adjusting Screw
4	04383543	1							CLIP, Brake Shoe Hold Down
5									LEVER, Park Brake Adjusting
	04762530	1	D, P						Right
	04762531	1	D, P						Left
6	04762537 V2021537 BHKH7288 BHKH2658 BHKH2659 V2021537AB	1	D, P						SHOE KIT, Brake Mopar V-Line Alternative Part Mopar V-Line Alternative Part All In One Drum Combi Kits Mopar V-Line Alternative Part Drum Self Adjuster Kit Left Mopar V-Line Alternative Part Drum Self Adjuster Kit Mopar V-Line Alternative Part
7	04238730	1							SPRING, Brake Shoe Return
8	04238851	1							SPRING, Brake Auto Adjuster Lever
9									PLATE, Brake Backing
	05011628AA	1							with out ABS Right
	05011629AA	1							with out ABS Left
10									LEVER, Park Brake Adjusting
	04238722	1							Right
	04238723	1							Left
11	05273983	2							DRUM, Brake, Five Stud (BRA,BRX)
12	04509599	2							HUB AND BEARING, Brake, Five Stud (BRA, BRX)
-13	06502432	2							LOCK NUT, Rear Spindle, M20-1.50
14	04509396	2							CAP, Wheel Bearing
15	06500526	20							NUT, Wheel, M12x1.5, Standard
16	04509544	2							SEAL, Brake Support

NEON (US) SX 2.0 (CANADA) (PL)

SERIES LINE  
L = LOWLINE D = DODGE  
H = HIGHLINE P = PLYMOUTH  
S = SPECIAL Z = CHRYSLER (RHD)  
D = CHRYSLER

BODY  
41 = 4 DOOR, 104WB

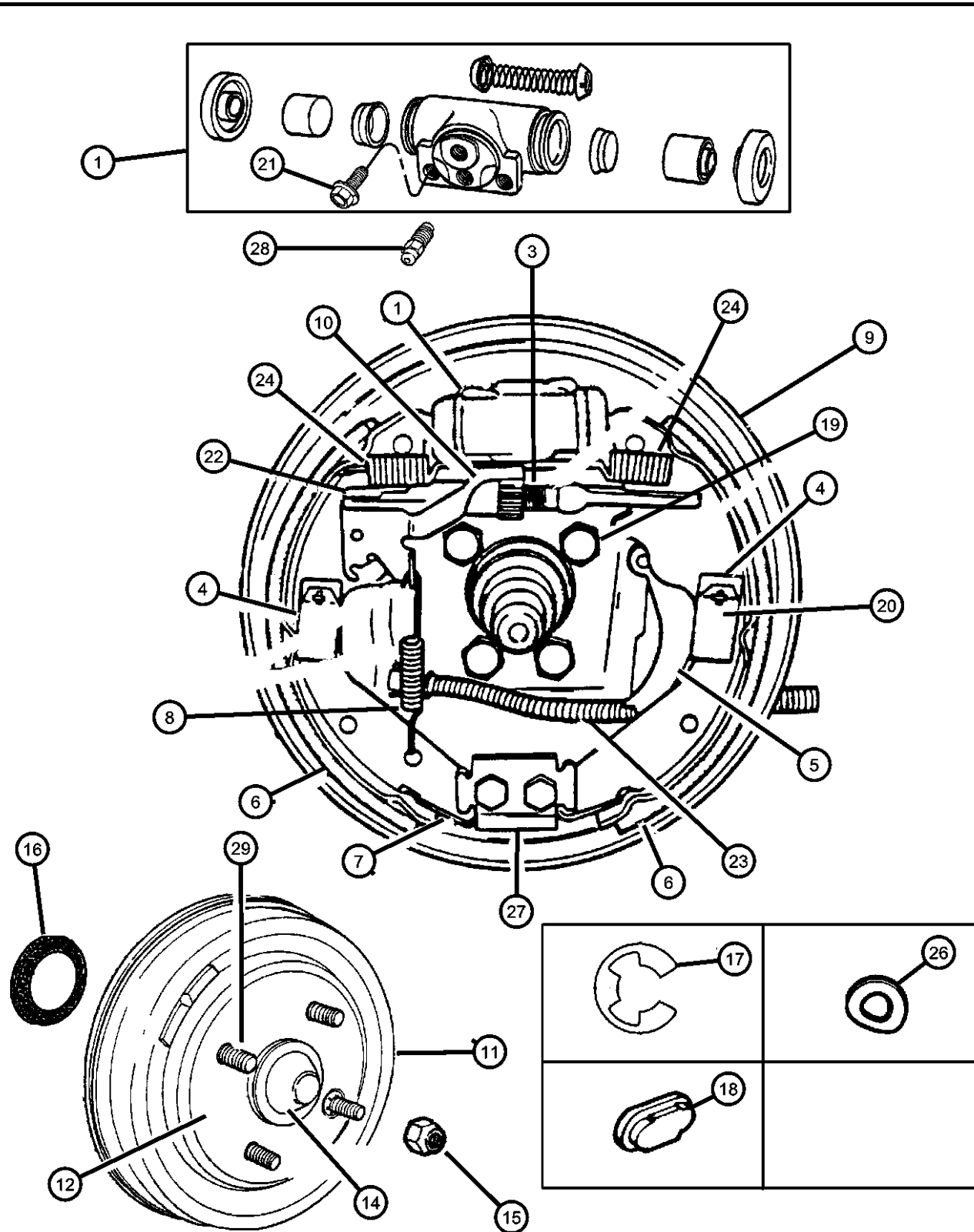
ENGINE  
EBD = 1.8L 4 Cyl SOHC 16V  
SEFI Engine  
ECB = 2.0L 4 Cyl SOHC 16V  
SMPI Engine  
EJD = 1.6L 4 Cyl 16V SOHC

TRANSMISSION  
DD5 = 5-Speed Manual Transmission  
DGC = 3-Speed Automatic  
Transmission  
DGL = 4-Speed Automatic  
Transmission  
DGO = All Automatic Transmissions  
DBB = All 5 Speed Manual  
Transmissions

AR = use ase required - = Non illustrated part

1998 PL

Brakes, Rear Drum  
Figure 5-205



ITEM	PART NUMBER	QTY	LINE	SERIES	BODY	ENGINE	TRANS	TRIM	DESCRIPTION
17	04238716	1							CLIP, Parking Brake Pin Lever
18	04238721	1							PLUG, Brake Adjusting Hole
19	06503579	8							BOLT AND CONED WASHER, Hex Head, M10x1.5x30, Hex Head
20	04762536	1							PIN, Brake Shoe Hold Down
21	04423678	1							BOLT, Wheel Cylinder
22									ADJUSTER, Parking Brake
	04762534	1			D, P				Right
	04762535	1			D, P				Left
23	04762535	1							CABLE, Parking Brake, [Reference], (NOT SERVICED),
24	04741674	1							SPRING, Brake Shoe Return
-25	04741674	1							NUT, Push Rear Drum Retainer for M12 Stud, (NOT SERVICED)
26	04238715	1							SCREW, Rear Wheel Brake Cylinder Mounting
27	04238715	1							PLATE, Anchor [Service in Backing Plate], (NOT SERVICED)
28	03766674	1			D, P				SCREW, Bleeder
29	04746174	2							STUD, Wheel

NEON (US) SX 2.0 (CANADA) (PL)  
 SERIES LINE  
 L = LOWLINE D = DODGE  
 H = HIGHLINE P = PLYMOUTH  
 S = SPECIAL Z = CHRYSLER (RHD)  
 D = CHRYSLER

BODY  
 41 = 4 DOOR, 104WB

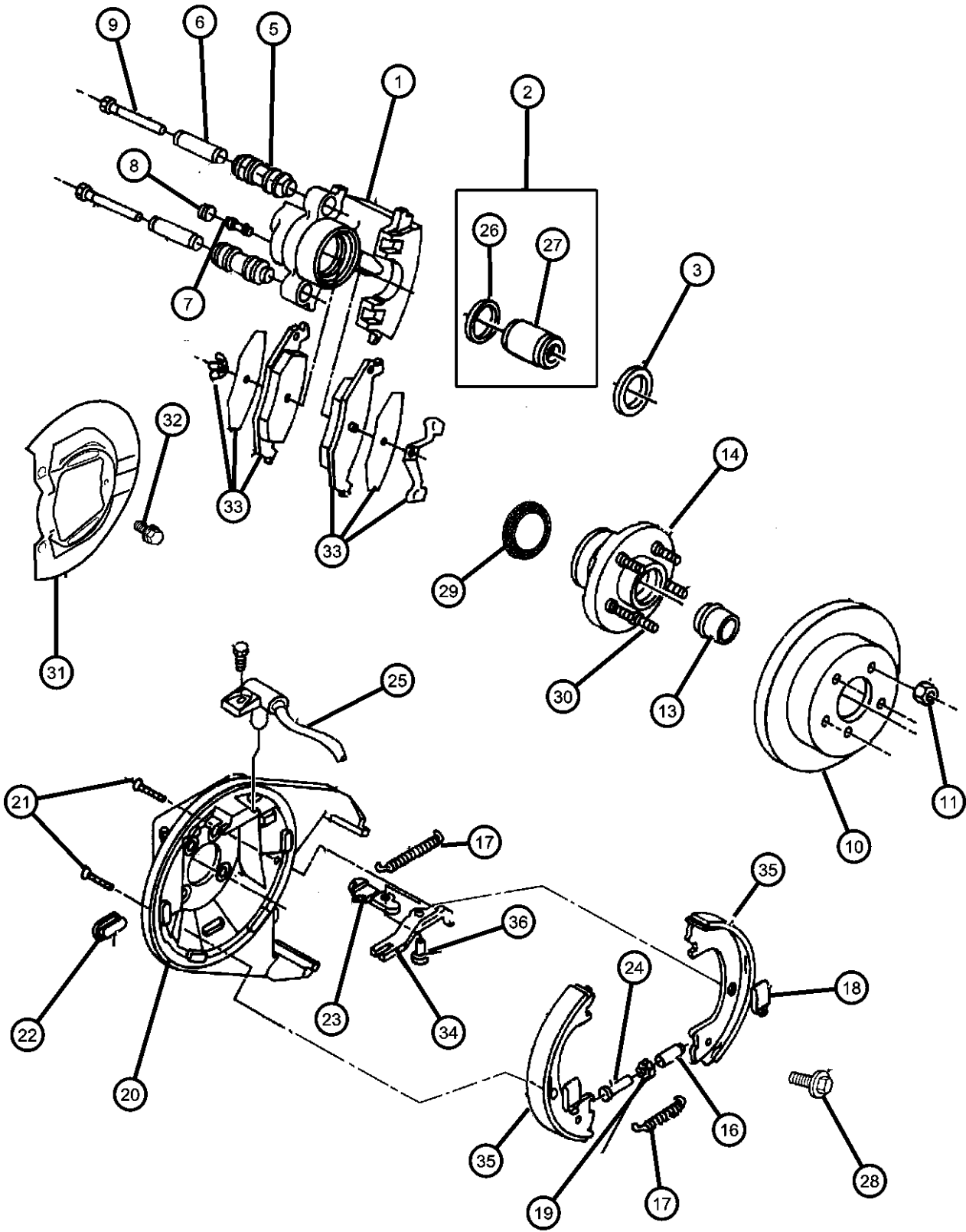
ENGINE  
 EBD = 1.8L 4 Cyl SOHC 16V SEFI Engine  
 ECB = 2.0L 4 Cyl SOHC 16V SMPI Engine  
 EJD = 1.6L 4 Cyl 16V SOHC

TRANSMISSION  
 DD5 = 5-Speed Manual Transmission  
 DGC = 3-Speed Automatic Transmission  
 DGL = 4-Speed Automatic Transmission  
 DGO = All Automatic Transmissions  
 DBB = All 5 Speed Manual Transmissions

AR = use ase required - = Non illustrated part

1998 PL

Brakes, Rear Disc  
Figure 5-207



ITEM	PART NUMBER	QTY	LINE	SERIES	BODY	ENGINE	TRANS	TRIM	DESCRIPTION
------	-------------	-----	------	--------	------	--------	-------	------	-------------

Note: Sales Code BRD= Disc/Disc  
Note: Sales Code BRF= Disc/Disc w/ABS

1									CALIPER, Disc Brake
	05011700AA	1							Right Black Coated
	05011701AA	1							Left Black Coated
2	04728133	1							PISTON PACKAGE, Disc Brake
3	04728133	1							BOOT, Brake Piston, (Service in Piston Package, (NOT SERVICED)
-4	04728132	1							BOOT AND SEAL PACKAGE, Disc Brake
5	04383471	1							BUSHING, Disc Brake Caliper
6	04423573	1							SLEEVE, Disc Brake Caliper
7	03780788	1							SCREW, Bleeder
8	04238717	1							CAP, Bleeder
9	06502527	4							BOLT, Hex Flange Head, M8-1.25x68.50, (Pin)
10	04509553	2							ROTOR, Brake, Five Stud w/Disc/Disc (BRD) (w/Disc/Disc w/ABS BRF)
11	06500526	20							NUT, Wheel, M12x1.5
-12	06502738	20							w/Style Wheels
	06504266	20							w/Wheel Covers
13	04509396	2							CAP, Wheel Bearing
14	04509599	2							HUB AND BEARING, Brake w/Disc/Disc (BRD) Five Stud
	05003549AA	2							w/Disc/Disc w/ABS (BRF) Five Stud (See Note One)
-15	06502432	2							LOCK NUT, Rear Spindle, M20-1.50
16	04509504	1							SOCKET, Brake Adjusting Screw
17	04383541	1							SPRING, Park Brake Shoe Return Upper
	04383542	1							Lower
18	04383543	1							CLIP, Brake Shoe Hold Down
19	04383539	1							NUT, Parking Brake Adjusting
20									ADAPTER, Disc Brake Caliper

NEON (US) SX 2.0 (CANADA) (PL)  
SERIES LINE  
L = LOWLINE D = DODGE  
H = HIGHLINE P = PLYMOUTH  
S = SPECIAL Z = CHRYSLER (RHD)  
D = CHRYSLER

BODY  
41 = 4 DOOR, 104WB

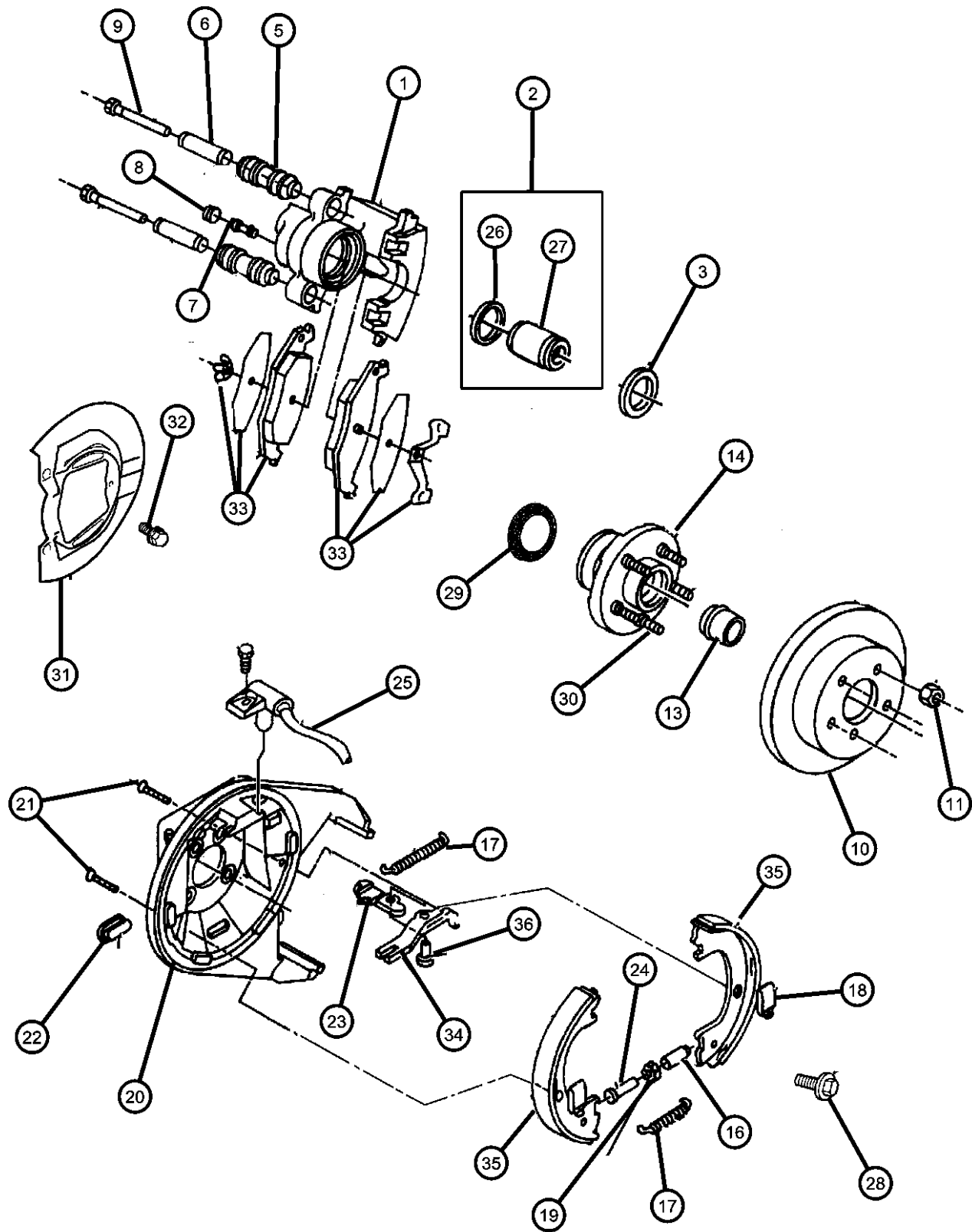
ENGINE  
EBD = 1.8L 4 Cyl SOHC 16V SEFI Engine  
ECB = 2.0L 4 Cyl SOHC 16V SMPI Engine  
EJD = 1.6L 4 Cyl 16V SOHC

TRANSMISSION  
DD5 = 5-Speed Manual Transmission  
DGC = 3-Speed Automatic Transmission  
DGL = 4-Speed Automatic Transmission  
DGO = All Automatic Transmissions  
DBB = All 5 Speed Manual Transmissions

AR = use ase required - = Non illustrated part

1998 PL

Brakes, Rear Disc  
Figure 5-207



ITEM	PART NUMBER	QTY	LINE	SERIES	BODY	ENGINE	TRANS	TRIM	DESCRIPTION
	04762684	1							Right w/Sensor Mount
	04762685	1							Left w/Sensor Mount
	04762686	1							Right with out Sensor
	04762687	1							Left with out Sensor
21	04238733	1							PIN, Brake Shoe Hold Down
22	04238721	1							PLUG, Brake Adjusting Hole
23									LEVER, Park Brake Adjusting
	04882208	1							Right
	04882209	1							Left
24	04509503	1							SCREW, Parking Brake
25									SENSOR, Anti-Lock Brakes
	05273224	1							Right
	05273225	1							Left
26	04364779	1							SEAL PACKAGE, Brake Caliper
27	04762551	1							PISTON, Brake
28	06503579	8							BOLT AND CONED WASHER, Hex Head, M10x1.5x30, Hex Hd Pilot Pt Brake Attach
29	04509544	2							SEAL, Brake Support
30	04746174	2							STUD, Wheel
31									SHIELD, Brake
	04728110	1							Right
	04728111	1							Left
32	04723981	1							SCREW, Rear Brake Dust Shield to Adapter
33	05011630AA	1							PAD, Disc Brake, Black Coated
	BHKH5593								Mopar V-Line Alternative Part Disc Hardware
	BHKH5066								Mopar V-Line Alternative Part Caliper Bolts
	V2013630AB								Mopar V-Line Alternative Part
34	05011630AA	1							LINK, Brake Cylinder, (Service with Lever), (NOT SERVICED)
35	04741772	1							SHOE AND LINING, Parking Brake
	BHKP7300								Mopar Parking Brake Hardware Kit

NEON (US) SX 2.0 (CANADA) (PL)  
 SERIES LINE  
 L = LOWLINE D = DODGE  
 H = HIGHLINE P = PLYMOUTH  
 S = SPECIAL Z = CHRYSLER (RHD)  
 D = CHRYSLER

BODY  
 41 = 4 DOOR, 104WB

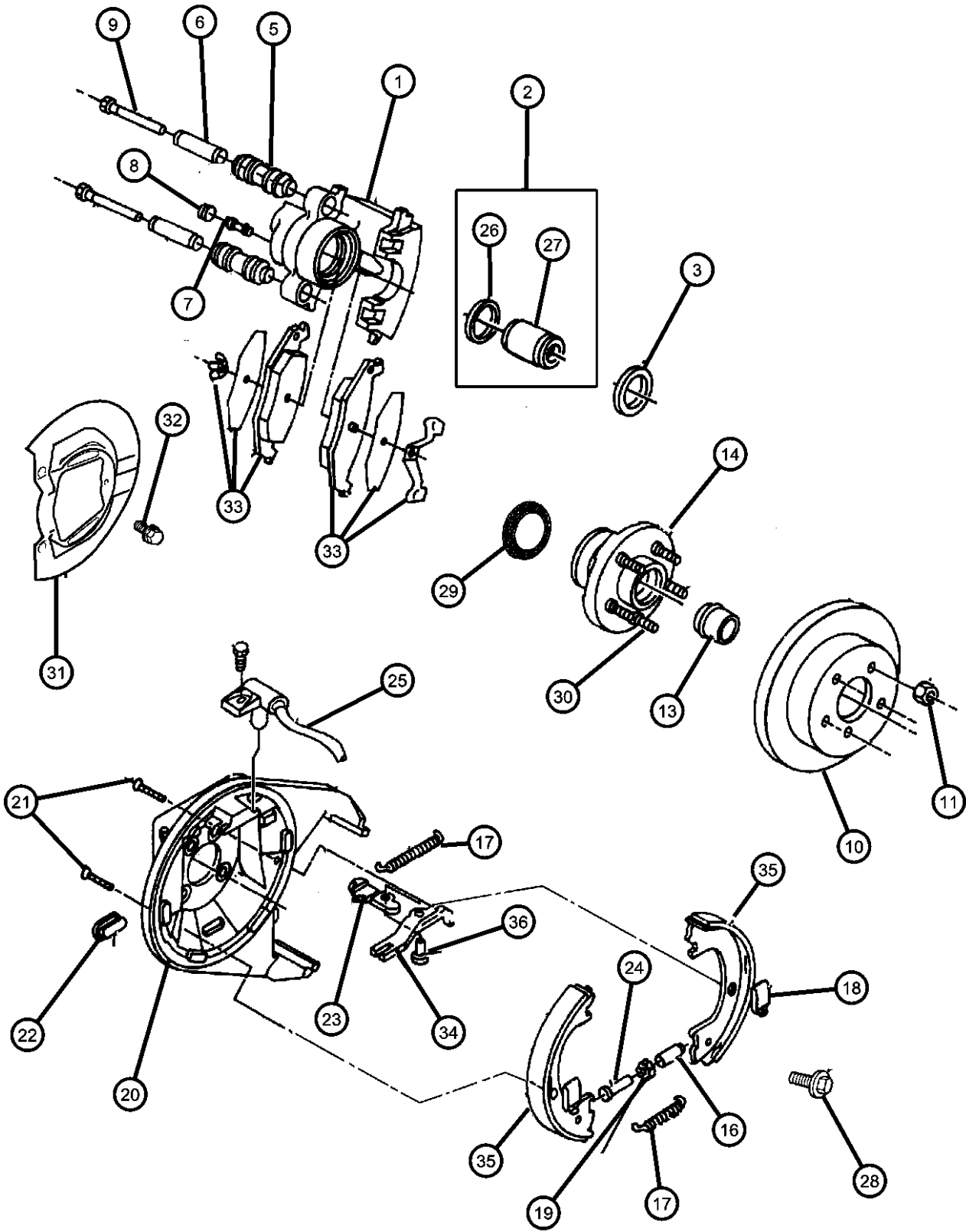
ENGINE  
 EBD = 1.8L 4 Cyl SOHC 16V SEFI Engine  
 ECB = 2.0L 4 Cyl SOHC 16V SMPI Engine  
 EJD = 1.6L 4 Cyl 16V SOHC

TRANSMISSION  
 DD5 = 5-Speed Manual Transmission  
 DGC = 3-Speed Automatic Transmission  
 DGL = 4-Speed Automatic Transmission  
 DGO = All Automatic Transmissions  
 DBB = All 5 Speed Manual Transmissions

AR = use ase required - = Non illustrated part

1998 PL

Brakes, Rear Disc  
Figure 5-207



ITEM	PART NUMBER	QTY	LINE	SERIES	BODY	ENGINE	TRANS	TRIM	DESCRIPTION
	BHKP7301								Mopar Parking Brake Hardware Kit
	V2013036								Mopar V-Line Alternative Part
36	04741772	1							PIN, (Service with Lever), (NOT SERVICED)

NEON (US) SX 2.0 (CANADA) (PL)  
 SERIES LINE  
 L = LOWLINE D = DODGE  
 H = HIGHLINE P = PLYMOUTH  
 S = SPECIAL Z = CHRYSLER (RHD)  
 D = CHRYSLER

BODY  
 41 = 4 DOOR, 104WB

ENGINE  
 EBD = 1.8L 4 Cyl SOHC 16V SEFI Engine  
 ECB = 2.0L 4 Cyl SOHC 16V SMPI Engine  
 EJD = 1.6L 4 Cyl 16V SOHC

TRANSMISSION  
 DD5 = 5-Speed Manual Transmission  
 DGC = 3-Speed Automatic Transmission  
 DGL = 4-Speed Automatic Transmission  
 DGO = All Automatic Transmissions  
 DBB = All 5 Speed Manual Transmissions

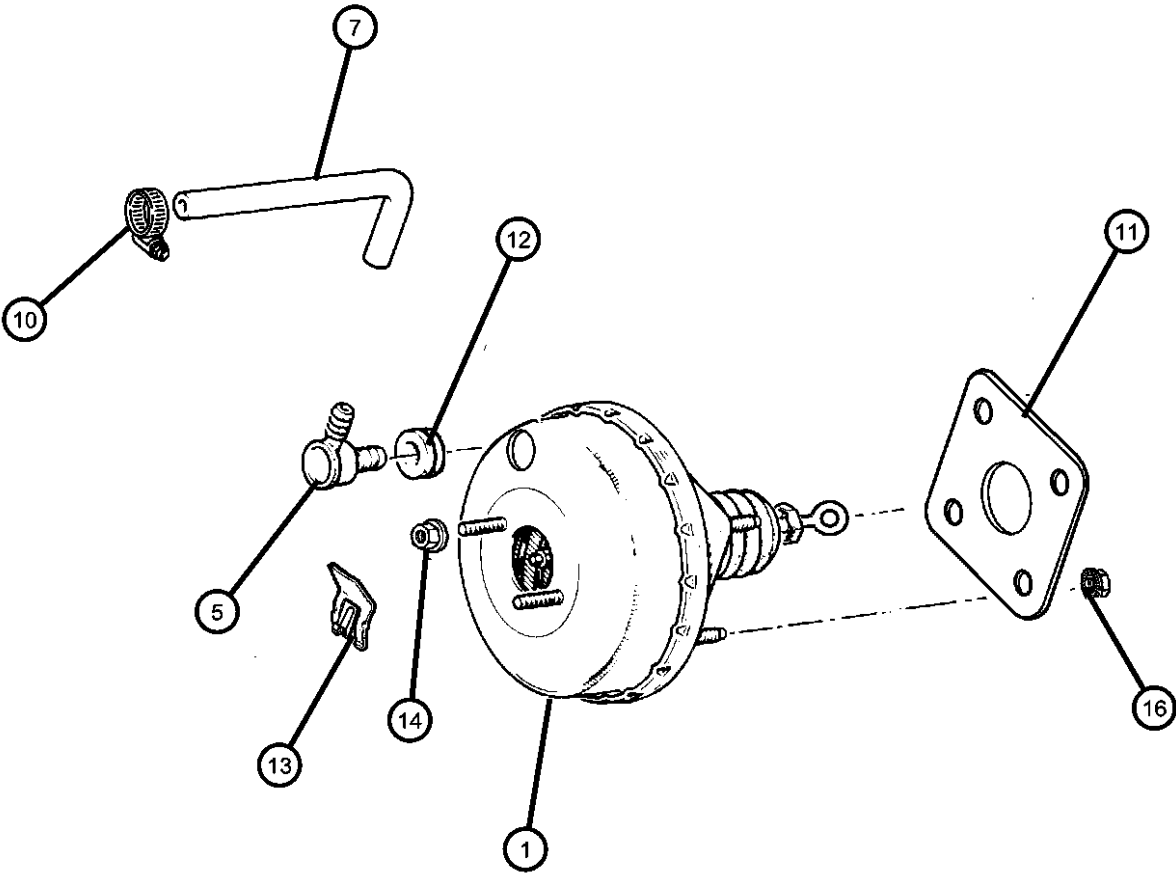
AR = use ase required - = Non illustrated part

1998 PL



Booster, Power Brake

Figure 5-305



ITEM	PART NUMBER	QTY	LINE	SERIES	BODY	ENGINE	TRANS	TRIM	DESCRIPTION
Note: Sales Code BRA= Disc/Drum Note: Sales Code BRX= Disc/Drum (Export) Note: Sales Code BRD= Disc/Disc Note Sales Code BRF= Disc/Disc w/ABS									
1	04509751	1	D, P						BOOSTER, Power Brake with Disc/Disc with ABS (BRF)
	04509788	1	D, P						with Disc/Drum (BRA, BRX) with Disc/Disc (BRD)
-2	04509678	1	D, P						SEAL, Master Cylinder To Booster with Disc/Disc w/ABS (BRF)
	04886157AA	1	D, P						with Disc/Drum (BRA, BRX) with Disc/Disc (BRD)
-3	04324173	1	D, P						CONNECTOR, Brake Booster Vacuum
	04669462	1	D, P						with Calif Only
		1	Z		42				
-4	04026117	1	D, P						CONNECTOR, Manifold Vacuum with 2.0L Engine OverHead Cam
		1	Z		42				with 2.0L Engine Single OverHead Cam
		1	D, P						with 2.0L Engine Single OverHead Cam
		1	D, P						with 1.8L Engine Single OverHead Cam
		1	Z		42				with 1.8L Engine Single OverHead Cam
5	04485491	1	D, P						VALVE, Brake Booster Check
-6	04886480AA	1	Z		42				CHECK VALVE, Brake Booster
7	04509609	1	D, P						HOSE, Brake Booster with 2.0L Engine Dual Over Head Cam Rear Exhaust
	04509793	1	D, P						with 2.0L Engine Single Over Head Cam
-8	04509695	1	Z		42				HOSE, Brake Booster Vacuum, with 2.0L Engine Single Over Head Cam (Throttle Body to Booster Nipple)
-9	J8125883	1	Z		42				HOSE, Vacuum Supply, 11/32" rough stock, (11/32" Roll Stock) Booster to Nipple End

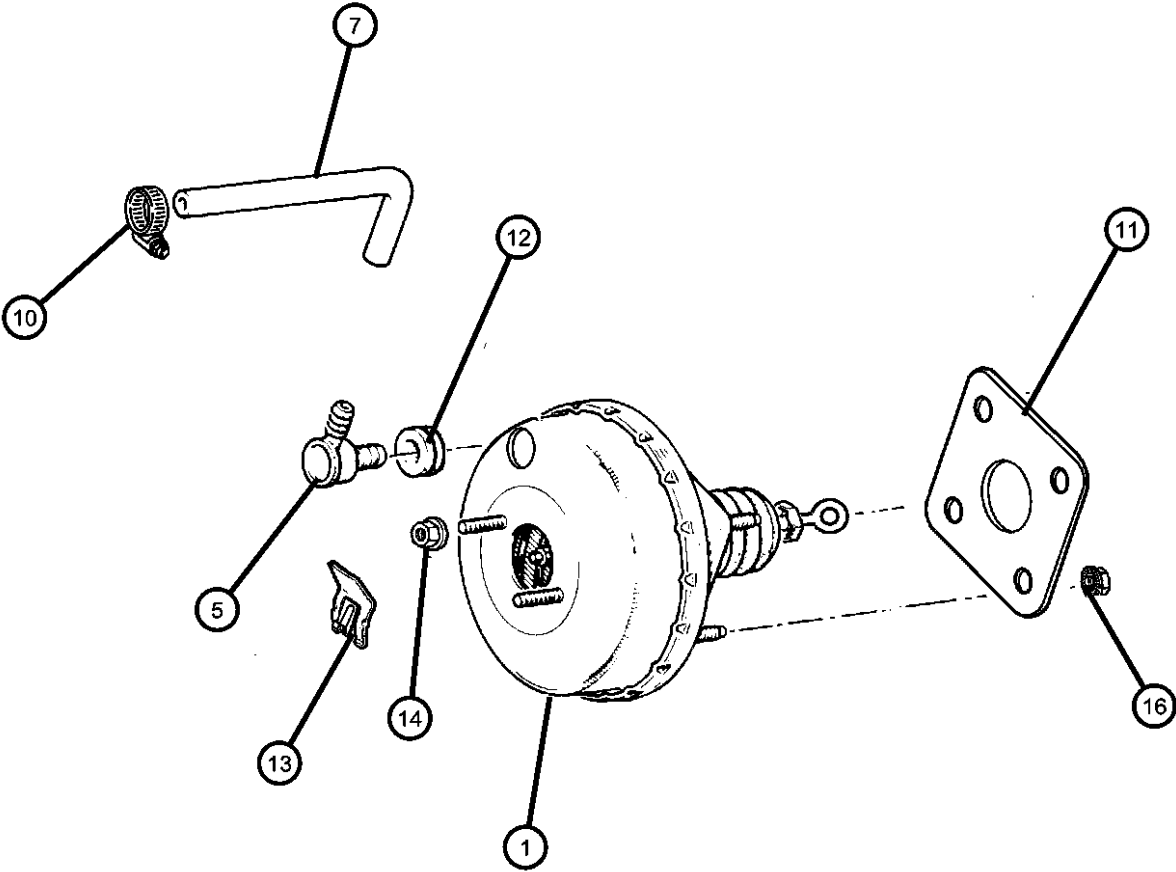
NEON (US) SX 2.0 (CANADA) (PL)

SERIES	LINE	BODY	ENGINE	TRANSMISSION
L = LOWLINE	D = DODGE	41 = 4 DOOR, 104WB	EBD = 1.8L 4 Cyl SOHC 16V SEFI Engine	DD5 = 5-Speed Manual Transmission
H = HIGHLINE	P = PLYMOUTH		ECB = 2.0L 4 Cyl SOHC 16V SMPI Engine	DGC = 3-Speed Automatic Transmission
S = SPECIAL	Z = CHRYSLER (RHD)		EJD = 1.6L 4 Cyl 16V SOHC	DGL = 4-Speed Automatic Transmission
	D = CHRYSLER			DGO = All Automatic Transmissions
				DBB = All 5 Speed Manual Transmissions

AR = use ase required - = Non illustrated part

**Booster, Power Brake  
Figure 5-305**

ITEM	PART NUMBER	QTY	LINE	SERIES	BODY	ENGINE	TRANS	TRIM	DESCRIPTION
10									CLAMP, Hose
	02448761	2	D, P						
		1	Z		42				
11									GASKET, Booster To Dash
	04762599	1	D, P						
	04886488AA	1	Z		42				
12	04485493	1	D, P						GROMMET, Brake Booster Check Valve
13	06035334	1							CLIP, Brake Push Rod
14	06502524	2	D, P						NUT, Hex Lock, M8x1.25
-15	04897486AA	1	Z		42				NUT
16	06101445	4							NUT AND WASHER, Hex Nut-Coned Washer, M8 x 1.25

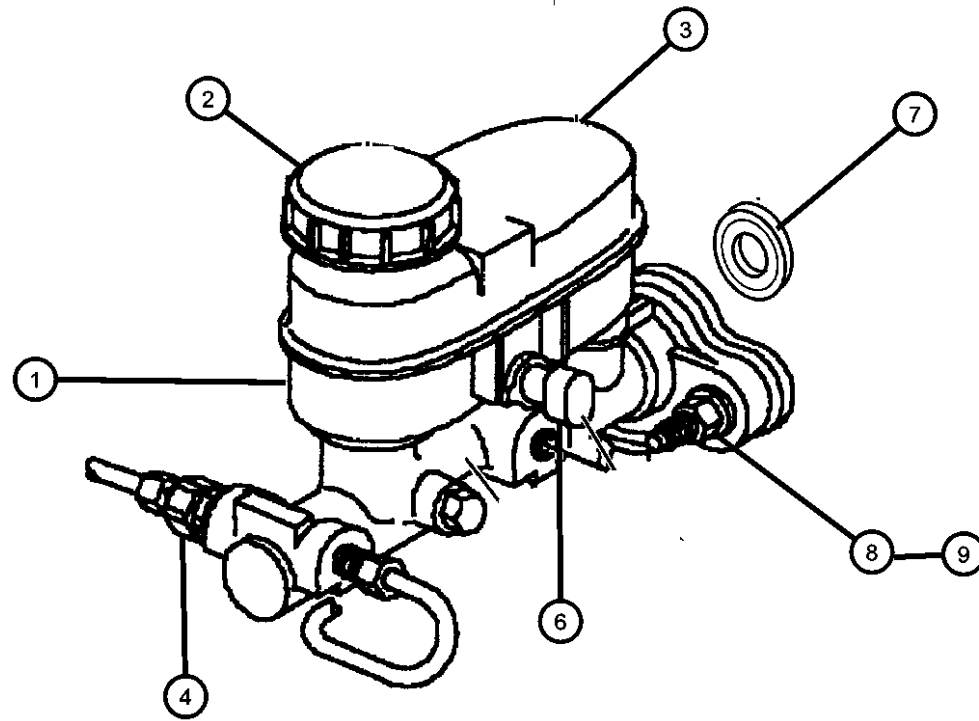


**NEON (US) SX 2.0 (CANADA) (PL)**

SERIES	LINE	BODY	ENGINE	TRANSMISSION
L = LOWLINE	D = DODGE	41 = 4 DOOR, 104WB	EBD = 1.8L 4 Cyl SOHC 16V SEFI Engine	DD5 = 5-Speed Manual Transmission
H = HIGHLINE	P = PLYMOUTH		ECB = 2.0L 4 Cyl SOHC 16V SMPI Engine	DGC = 3-Speed Automatic Transmission
S = SPECIAL	Z = CHRYSLER (RHD)		EJD = 1.6L 4 Cyl 16V SOHC	DGL = 4-Speed Automatic Transmission
	D = CHRYSLER			DGO = All Automatic Transmissions
				DBB = All 5 Speed Manual Transmissions

AR = use ase required - = Non illustrated part

**Master Cylinder  
Figure 5-405**



ITEM	PART NUMBER	QTY	LINE	SERIES	BODY	ENGINE	TRANS	TRIM	DESCRIPTION
Note: Sales Code BRA= Disc/Drum Note: Sales Code BRX= Disc/Drum (Export) Note: Sales Code BRD= Disc/Disc Note: Sales Code BRF= Disc/Disc w/ABS									
1	04509681	1	D, P						MASTER CYLINDER, Brake with (BRA) with Reservoir
	V1109681AA								Mopar V-Line Alternative Part
	04509853AA	1	D, P						with (BRD)
	04509855AA	1	D, P						with (BRX)
	04762594	1	D, P						with( BRA) with out Reservoir
	04762608	1	D, P						with (BRF)
	V1102608AA								Mopar V-Line Alternative Part
	04886464AA	1	Z		42				with (BRD, BRX)
	04886465AA	1	Z		42				with (BRF)
2	04797187	1	D, P						CAP, Master Cylinder Reservoir
	04886489AA	1	Z		42				
3	04762595	1	D, P						RESERVOIR, Brake Master Cylinder
	04886485AA	1	Z		42				with Switch (Brake Fluid Level)
4	04509863AA	2	Z		42				VALVE, Proportioning [BRX]
	04762166	AR	D, P						[BRD] [BRF] Secondary
	04762167	AR	D, P						[BRD] [BRF] Primary
	04797185	AR	D, P						[BRA] Primary
	04797186	AR	D, P						[BRA] Secondary
-5	04723389	1	D, P						GROMMET, Master Cylinder Reservoir
6	04637625	1	D, P						SWITCH, Brake Fluid Level
7	04509678	1	D, P						SEAL, Master Cylinder To Booster with (BRF)
	04886157AA	1	D, P						230MM Single with (BRA, BRD, BRX)
8	06502524	2	D, P						NUT, Hex Lock, M8x1.25, Master Cylinder to Booster

**NEON (US) SX 2.0 (CANADA) (PL)**

SERIES LINE  
 L = LOWLINE D = DODGE  
 H = HIGHLINE P = PLYMOUTH  
 S = SPECIAL Z = CHRYSLER (RHD)  
 D = CHRYSLER

BODY  
 41 = 4 DOOR, 104WB

ENGINE  
 EBD = 1.8L 4 Cyl SOHC 16V SEFI Engine  
 ECB = 2.0L 4 Cyl SOHC 16V SMPI Engine  
 EJD = 1.6L 4 Cyl 16V SOHC

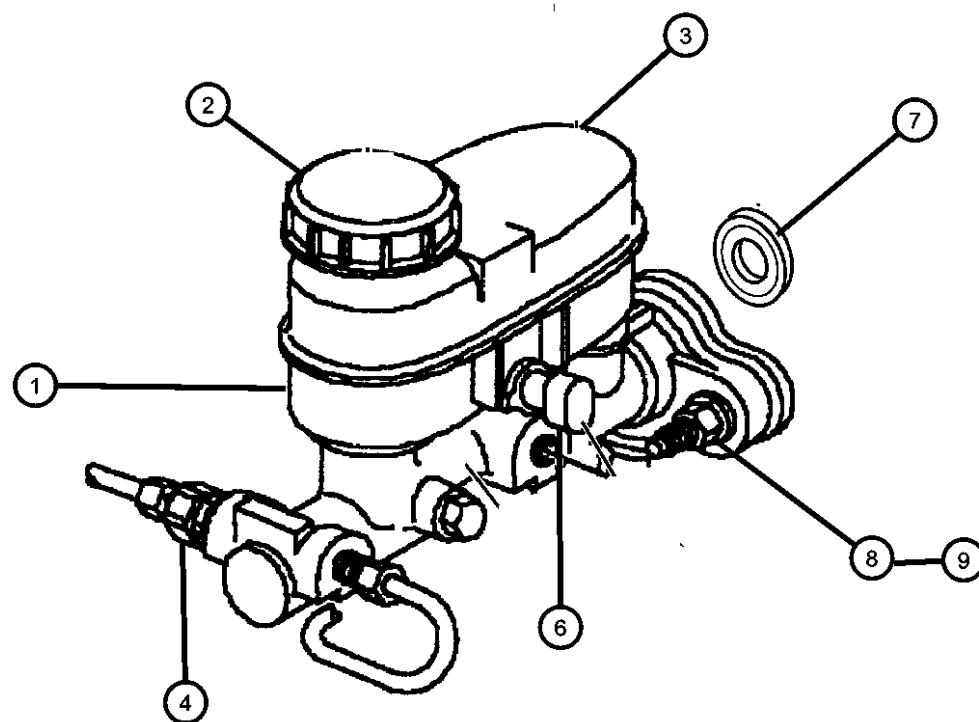
TRANSMISSION  
 DD5 = 5-Speed Manual Transmission  
 DGC = 3-Speed Automatic Transmission  
 DGL = 4-Speed Automatic Transmission  
 DGO = All Automatic Transmissions  
 DBB = All 5 Speed Manual Transmissions

AR = use ase required - = Non illustrated part

1998 PL

**Master Cylinder  
Figure 5-405**

ITEM	PART NUMBER	QTY	LINE	SERIES	BODY	ENGINE	TRANS	TRIM	DESCRIPTION
9	04897486AA	1	Z		42				NUT, Master Cylinder to Booster
-10	06101695	1	Z		42				NUT, Hex Flange Lock, M8x1.25, Master Cylinder Res Bracket to Brake Booster



**NEON (US) SX 2.0 (CANADA) (PL)**

SERIES LINE  
 L = LOWLINE D = DODGE  
 H = HIGHLINE P = PLYMOUTH  
 S = SPECIAL Z = CHRYSLER (RHD)  
 D = CHRYSLER

BODY  
 41 = 4 DOOR, 104WB

ENGINE  
 EBD = 1.8L 4 Cyl SOHC 16V SEFI Engine  
 ECB = 2.0L 4 Cyl SOHC 16V SMPI Engine  
 EJD = 1.6L 4 Cyl 16V SOHC

TRANSMISSION  
 DD5 = 5-Speed Manual Transmission  
 DGC = 3-Speed Automatic Transmission  
 DGL = 4-Speed Automatic Transmission  
 DGO = All Automatic Transmissions  
 DBB = All 5 Speed Manual Transmissions

AR = use ase required - = Non illustrated part

1998 PL