

VIN PLATE DECODING INFORMATION

1	2	3	4	5	6	7	8	9	10	11	12 thru 17
Country	Make	Vehicle Type	Other	Line	Series	Body Style	Engine	Check Digit	Model Year	Assy. Plant	Sequence No.

The following table interprets the VIN Plate position shown above.

Position	Interpretation	Codes = Description
1	Country of Origin	2 = Canada 1 = United States
2	Assembler	C = Chrysler B = Dodge P = Plymouth
3	Vehicle Type	4 = Multipurpose Passenger Vehicle
4	GVWR & Pass. Safety	D = 0-1360 kg (0-3000 lbs) E = 1361-1814 kg (3001-4000 lbs) F = 1815-2267 kg (4001-5000 lbs) G = 2268-2721 kg (5001-6000 lbs) H = 2722-3175 kg (6001-7000 lbs) J = 3176-3628 kg (7001-8000 lbs) K = 3629-4082 kg (8001-9000 lbs) L = 4083-4535 kg (9001-10000 lbs) M = 4536-6350 kg (10001-14000 lbs)
5	Vehicle Line	T = AWD Chrysler, Town & Country T = AWD Dodge, Grand Caravan T = AWD Plymouth, Grand Voyager P = FWD Chrysler, Town & Country P = FWD Dodge, Caravan/Grand Caravan P = FWD Plymouth, Voyager/Grand Voyager
6	Series	4 = High Line 2 = Low Line 5 = Premium Line 6 = Sport 1 = Economy
7	Body Style	4 = Long Wheel Base 5 = Short Wheel Base
8	Engine	B = 2.4L 4 Cyl. (EDZ) 3 = 3.0L 6 Cyl. (EFA) R = 3.3L 6 Cyl.(EGA/EGM) L = 3.8L 6 Cyl. (EGH) 8 = 95 H.P Electric Motor (E98) G = 3.3L 6 Cyl. Flex Fuel (EGM)
9	Check Digit	0 = Check Digit
10	Model Year	V = 1997 X = 1999
11	Assembly Plant	R = Windsor Assembly B = St. Louis Assembly South
12 thru 17	Vehicle Build Sequence	Model Year Assembly Sequence

Group - 2

Front Suspension & Drive

Group - 2 Front Suspension & Drive

Group-Fig. No.

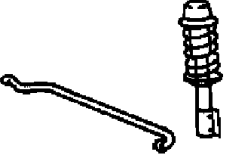
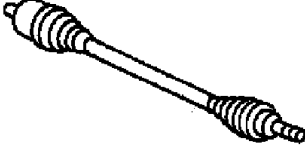
Illustration Title

Front Suspension

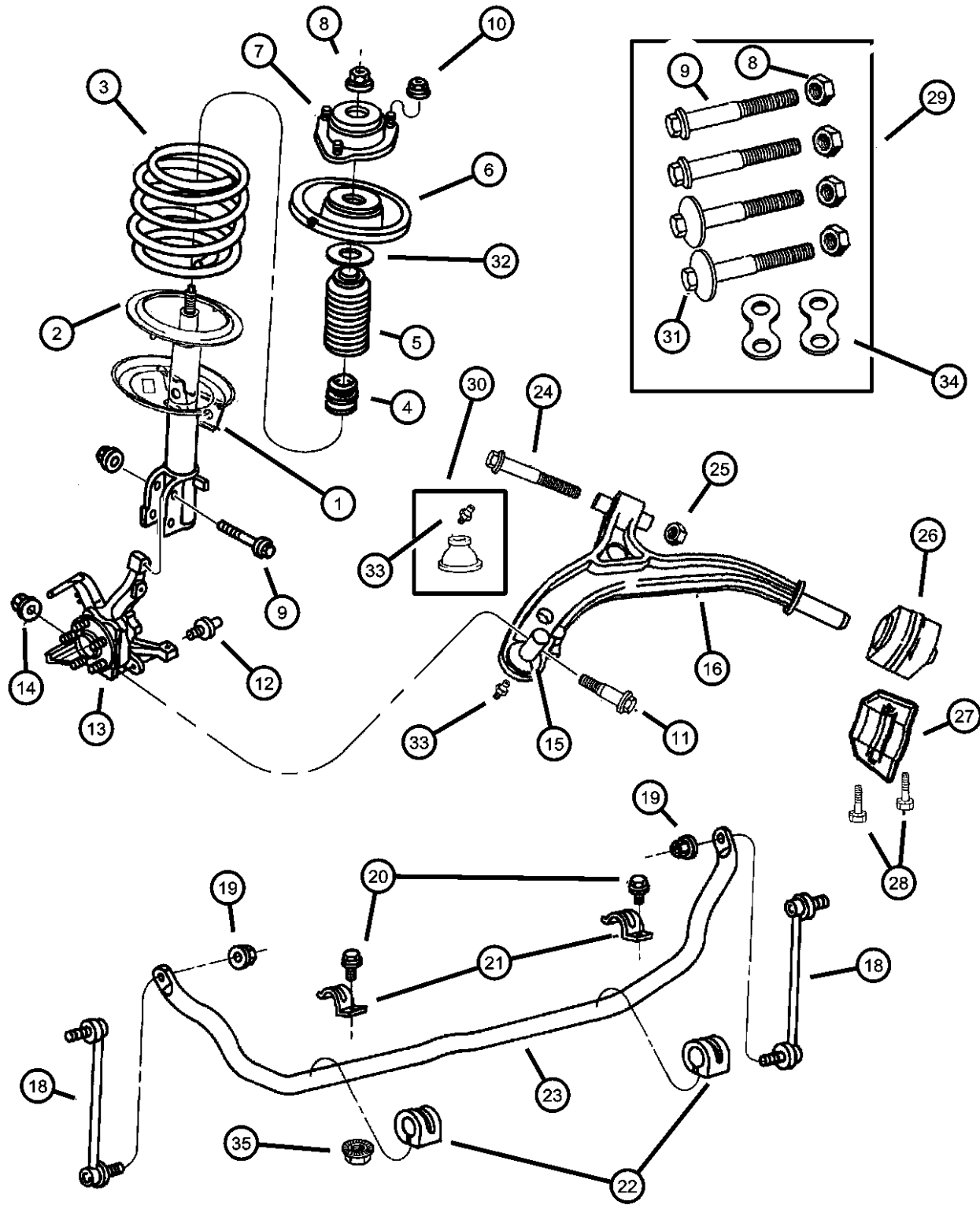
Suspension, Front..... Fig. 2 - 145

Front Axle Drive Shafts

Shaft, Front Drive Fig. 2 - 245

<p>002-100 Front Suspension</p> 	<p>002-200 Front Axle Drive Shafts</p> 		
--	---	--	--

**Suspension, Front
Figure 2-145**



ITEM	PART NUMBER	QTY	LINE	SERIES	BODY	ENGINE	TRANS	TRIM	DESCRIPTION
------	-------------	-----	------	--------	------	--------	-------	------	-------------

NOTE: Sales Code BRA= DISC/DRUM (14")
 NOTE: Sales Code BRB= DISC/DRUM (15")
 NOTE: Sales Code BRV= DISC/DRUM Heavy Duty (15")
 NOTE: Sales Code BRE= DISC/DISC (15")
 NOTE: Sales Code SDA= Standard Suspension
 NOTE: Sales Code SDB= Heavy Duty Suspension
 NOTE: Sales Code SDD= Commercial Wagon
 NOTE: Sales Code ZAB thru ZNM= Spring Group Types, Found on Individual Vehical Sales Code Listing.

1	04897451AA	2							STRUT, Front Suspension
	G0067697								Mopar V-Line Alternative Part
	0SG81964								Mopar V-Line Alternative Part
2	04694796	2							ISOLATOR, SpringLower
3									SPRING, Front Coil
	04684514	1							w/All Susp (ZNB,ZAB) Tag# 514
	04684515	1							w/All Susp (ZNC,ZAC) Tag# 515
	04684516	1							w/All Susp (ZND,ZAD) Tag# 516
	04684517	1							w/All Susp (ZNE,ZAE) Tag# 517
	04684518	1							w/All Susp (ZNF,ZAF) Tag# 518
	04684519	1							w/All Susp (ZNG,ZAG) Tag# 519
	04684520	1							w/All Susp (ZNH,ZAH) Tag# 520
	04684521	1							w/All Susp (ZNJ,ZAJ) Tag# 521
	04684563	1							w/All Susp (ZPB,ZBB) Tag# 563
	04684564	1							w/All Susp (ZPC,ZBC) Tag# 564
	04684565	1							w/All Susp (ZPD,ZBD) Tag# 565
	04684566	1							w/All Susp (ZPE,ZBE) Tag# 566
	04684567	1							w/All Susp (ZPF,ZBF) Tag# 567
	04684568	1							w/All Susp (ZPG,ZBG) Tag# 568
	04684569	1							w/All Susp (ZPH,ZBH) Tag# 569
	04684570	1							w/All Susp (ZPJ,ZBJ) Tag# 570
	04684571	1							w/All Susp (ZPK,ZBK) Tag# 571
	04684572	1							w/All Susp (ZPL,ZBL) Tag# 572
	04684573	1							w/All Susp (ZPM,ZBML) Tag# 573

CARAVAN, VOYAGER, TOWN AND COUNTRY (NS)

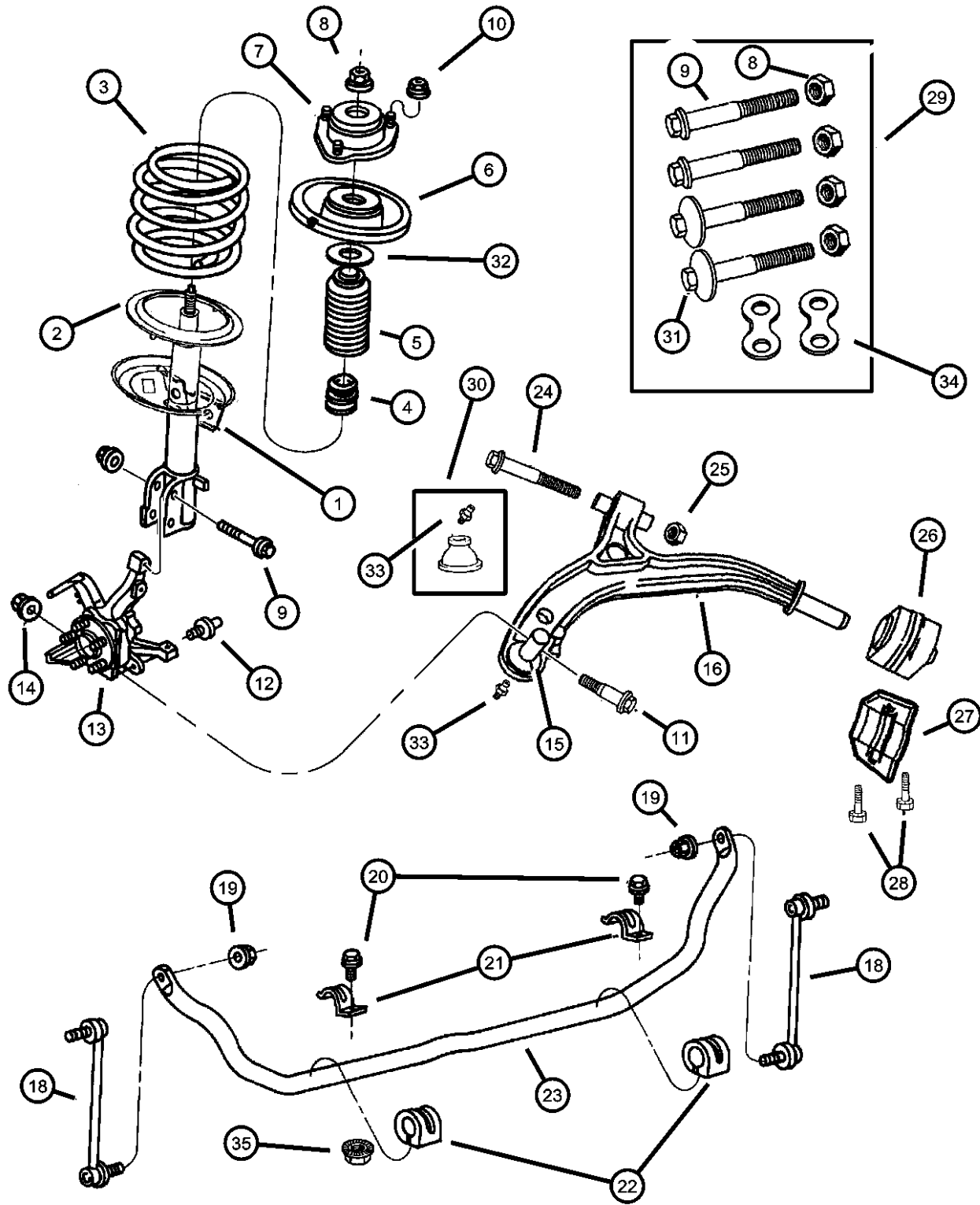
SERIES	LINE	BODY
L = Base	C = CHRYSLER AWD	52 = 113.3 SWB
H = LX, depor, SE	Y = CHRYSLER FWD	53 = 119.3 LWB
P = LXI, LE	D = DODGE AWD	
S = Limited	K = DODGE FWD	
X = ES	P = PLYMOUTH AWD	
	H = PLYMOUTH FWD	

ENGINE	TRANSMISSION
E98 = ELECTRIC MOTOR	DAC = SINGLE SPEED
EDZ = ENGINE - 2.4L 4 CYL	DGC = TRANSMISSION - 3-SPEED
DOHC 16V SMPI	AUTOMATIC
EFA = ENGINE - 3.0L V6	DGL = TRANSMISSION - 4-SPD.
SMPI	AUTOMATIC,41TE
EGA = ENGINE - 3.3L V6	
SMPI	
EGH = ENGINE - 3.8L V6	
SMPI	
EGM = ENGINE - 3.3L V6	
SMPI FFV	

AR = use ase required - = Non illustrated part

1999 NS

Suspension, Front
Figure 2-145



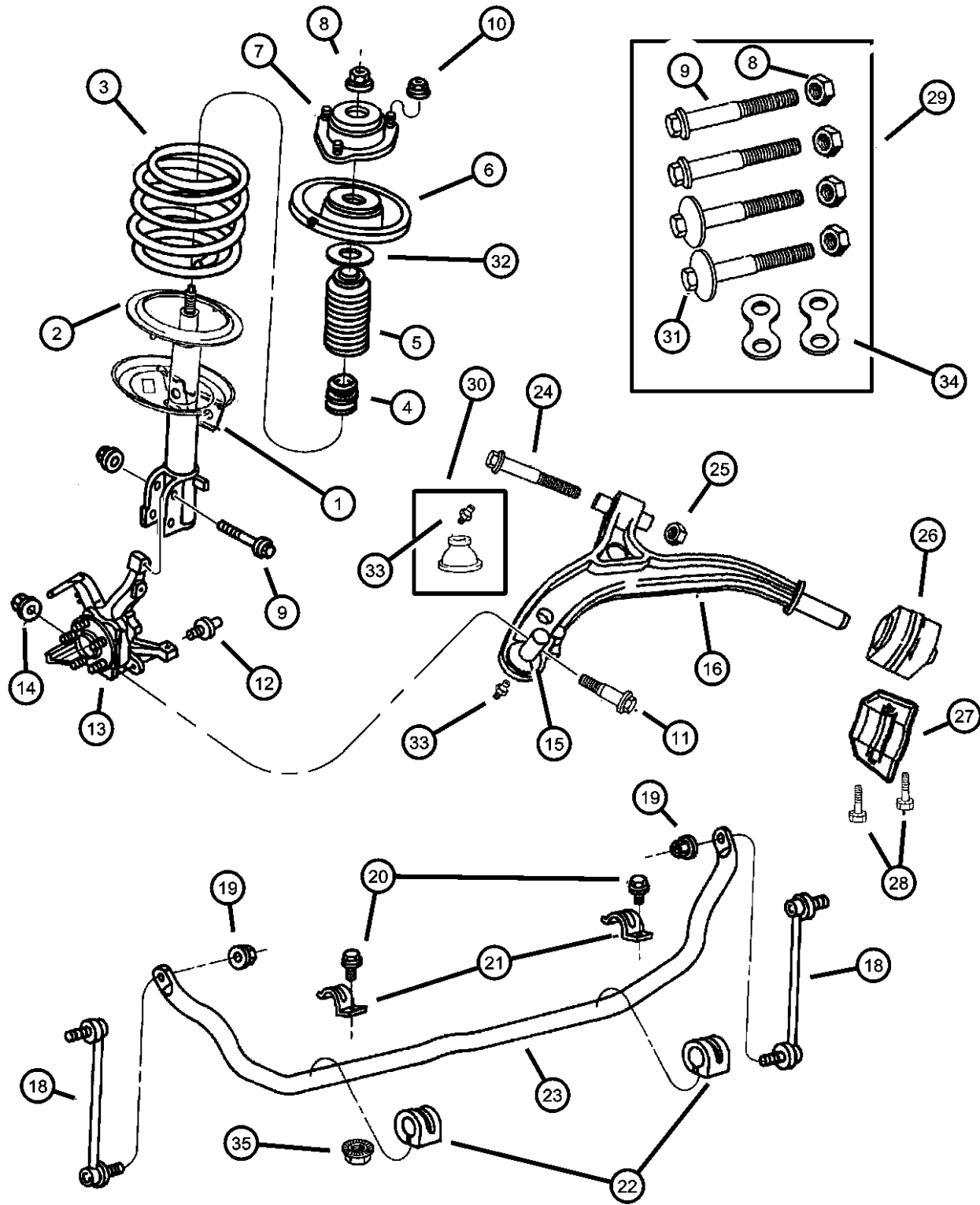
ITEM	PART NUMBER	QTY	LINE	SERIES	BODY	ENGINE	TRANS	TRIM	DESCRIPTION
4	04684442	2							BUMPER, Jounce, Front
5	04684443	2							Suspension Strut Jounce Damper
6	04684136	2							SHIELD, Shock Absorber Dust, Dust Front Susp Strut
7	04684129	2							SEAT, Spring
8	06502698	3							MOUNT, Strut
9	06503307	4							NUT, Strut Mount or Knuckle 21MM Hex Lock
10	06101445	2							BOLT, Hex Head, M14 x 2.0 x 74.00, Strut to Knuckle 21MM Hex Lock
11	06502336	2							NUT AND WASHER, Hex Nut-Coned Washer, M8 x 1.25, Coned Washer Strut Mount to Fender
12	06503304	2							BOLT, Hex Head, M14x2.0x57
13									STUD, Wheel Stop, M12-1.50x40.00 18MM Hex
	04694822	1							KNUCKLE, Front, w/o Hub and Bearing
	04694823	1							w/BRB,BRV,BRE 15" Brakes Also use 6101056 Screw, Right
	05015934AA	1							w/BRB,BRV,BRE 15" Brakes Also use 6101056 Screw, Left
	05015935AA	1							w/BRA 14" Brakes Also use 6101056 Screw, Right
14	06502335	2							w/BRA 14" Brakes Also use 6101056, Left
15	04694747	1							NUT, Hex Lock, M14 x 2.00, Knuckle to LCA Ball Joint 21MM Hex
16									BALL JOINT, Lower Control Arm
	04694760AC	1							ARM, Control Right
	04694761AC	1							Left
-17	04684120	1							BUSHING, Pivot, Front
18	04694855	2							LINK, Sway Eliminator, Sway Eliminator

CARAVAN, VOYAGER, TOWN AND COUNTRY (NS)

SERIES	LINE	BODY	ENGINE	TRANSMISSION
L = Base	C = CHRYSLER AWD	52 = 113.3 SWB	E98 = ELECTRIC MOTOR	DAC = SINGLE SPEED
H = LX, depor, SE	Y = CHRYSLER FWD	53 = 119.3 LWB	EDZ = ENGINE - 2.4L 4 CYL	DGC = TRANSMISSION - 3-SPEED
P = LXI, LE	D = DODGE AWD		DOHC 16V SMPI	AUTOMATIC
S = Limited	K = DODGE FWD		EFA = ENGINE - 3.0L V6	DGL = TRANSMISSION - 4-SPD.
X = ES	P = PLYMOUTH AWD		SMPI	AUTOMATIC,41TE
	H = PLYMOUTH FWD		EGA = ENGINE - 3.3L V6	
			SMPI	
			EGH = ENGINE - 3.8L V6	
			SMPI	
			EGM = ENGINE - 3.3L V6	
			SMPI FFV	

AR = use ase required - = Non illustrated part

Suspension, Front
Figure 2-145



ITEM	PART NUMBER	QTY	LINE	SERIES	BODY	ENGINE	TRANS	TRIM	DESCRIPTION
19	06503870	4							NUT AND WASHER, Hex Lock Nut-Coned Washer, M12 x 1.75, Link to Sway Bar 18MM Hex Lock
20	06502954	2				EGA, EGH, EGM			SCREW AND WASHER, Hex Head, M10x1.5x53, Hex Hd Sway Elim to C/Member
21	04684298	2							CLAMP, Stabilizer Bar to Sill, Sway Elim to C/Member
22	04684890	2							CUSHION, Sway Eliminator, Sway Bar Frt Suspension
23	04694751	1							BAR, Front Sway
24	06504508	2							BOLT, Hex Head, M14 x 2.00 x 120.00, Front Susp Control Arm Pivot
25	06502698	3							NUT, M14x2.00 21MM Hex Control Arm Pivot
26	06502698	3							RETAINER, (Service on Item 16), (NOT SERVICED)
27	04694777	2							RETAINER, Lower Control Arm, LCA to Cradle
28	06101848	4							SCREW AND WASHER, Hex Head, M10-1.50x30, Hex Hd LCA Bracket to Cradle
29	04797723	1							BOLT PACKAGE, Camber Adjustment
30	04797449	1							SEAL PACKAGE, Suspension
31	06503308	4							BOLT, Cam, M14 x 2.0 x 74.00
32	04684418	AR							BEARING, Strut Mount, Spring Seat
33	04694745	1							FITTING, Ball Joint, Zirc
34	04684637	2							WASHER, Dog Bone Strut, Strut Attch (Dog Bone)
35	06502696	2							NUT, Hex Flange Lock, M14x1.50, Swaybar Bracket to Crossmember
-36	06504593	4							SCREW AND WASHER, Hex Head, M14x2.00x125.00, Hex Hd Isolator to body (Crossmember)
-37	04743547	2	H, K, Y						DAMPER, Strut, w/Elect-Van (SDB)
-38	04684548	1							BUSHING, Lower Control Arm, Rear Pivot

CARAVAN, VOYAGER, TOWN AND COUNTRY (NS)

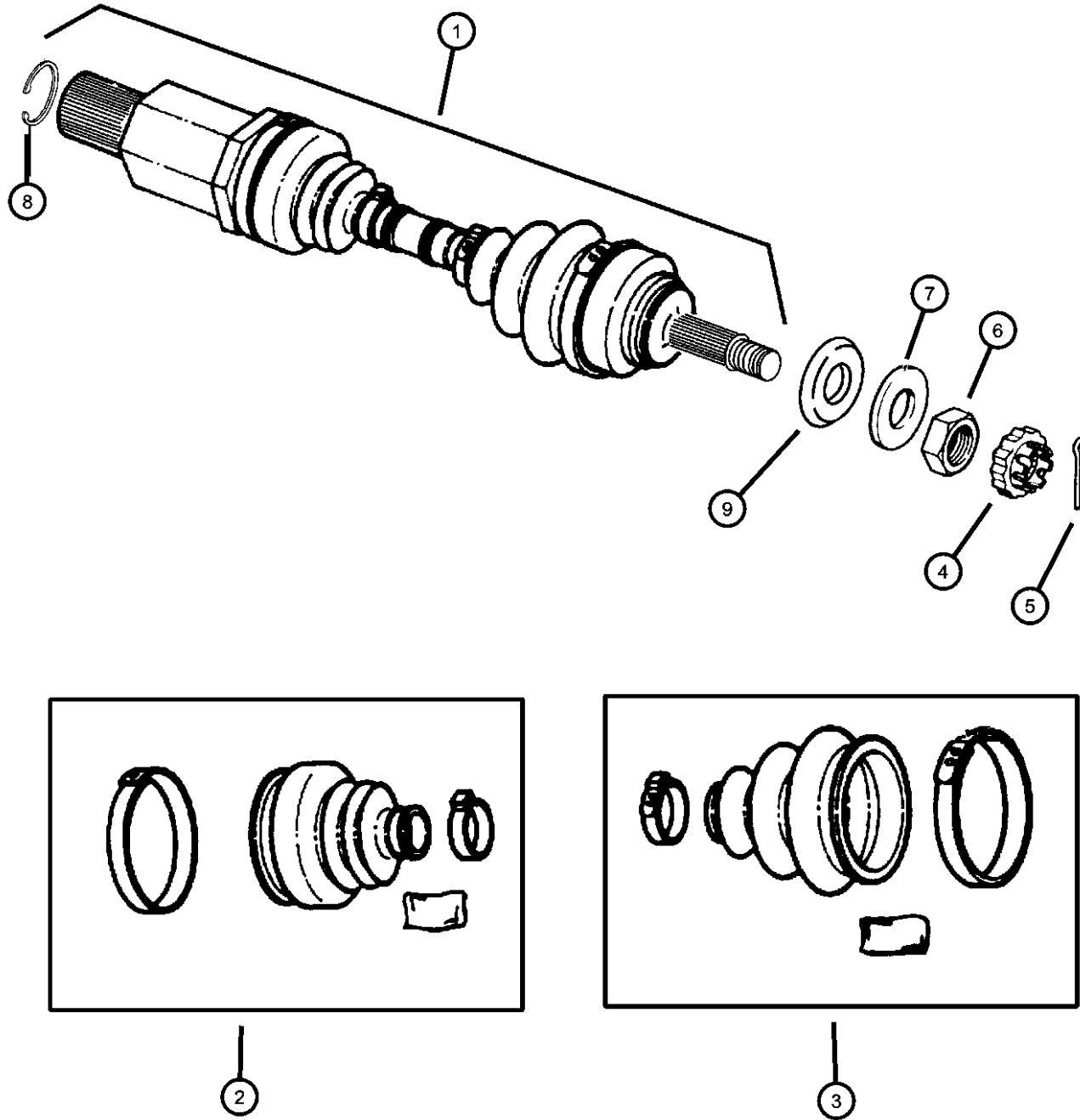
SERIES	LINE	BODY
L = Base	C = CHRYSLER AWD	52 = 113.3 SWB
H = LX, depor, SE	Y = CHRYSLER FWD	53 = 119.3 LWB
P = LXI, LE	D = DODGE AWD	
S = Limited	K = DODGE FWD	
X = ES	P = PLYMOUTH AWD	
	H = PLYMOUTH FWD	

ENGINE	TRANSMISSION
E98 = ELECTRIC MOTOR	DAC = SINGLE SPEED
EDZ = ENGINE - 2.4L 4 CYL DOHC 16V SMPI	DGC = TRANSMISSION - 3-SPEED AUTOMATIC
EFA = ENGINE - 3.0L V6 SMPI	DGL = TRANSMISSION - 4-SPD. AUTOMATIC,41TE
EGA = ENGINE - 3.3L V6 SMPI	
EGH = ENGINE - 3.8L V6 SMPI	
EGM = ENGINE - 3.3L V6 SMPI FFV	

AR = use ase required - = Non illustrated part

1999 NS

Shaft, Front Drive
Figure 2-245



ITEM	PART NUMBER	QTY	LINE	SERIES	BODY	ENGINE	TRANS	TRIM	DESCRIPTION
1	04641981	1	H, K, Y						SHAFT, Front Drive
	R2073658								Tag# 4641981, Left
	R2073659								Mopar Remanufactured Part w/o ABS
	R2073659	1	C, D, P		53				Mopar Remanufactured Part w/ AWD w/ABS
	R2073658								Tag# 4641981, Left
	R2073659								Mopar Remanufactured Part w/o ABS
	R2073659								Mopar Remanufactured Part w/ AWD w/ABS
	04660288AB	1	C, D, P		53				Tag# 4660288AB, Right
	R2073702								Mopar Remanufactured Part w/ AWD w/ABS
	04808568	1	H, K, Y						Tag# 4808568, Right
	R2073669								Mopar Remanufactured Part w/ABS
	R2073702								Mopar Remanufactured Part w/ AWD w/ABS
	R2073668								Mopar Remanufactured Part w/o ABS
2	04797699	1	H, K, Y						BOOT KIT, Half Shaft, Inner
	R2826100								w/or w/o ABS All Engines All Trans, Right
	R2826100	1	C, D, P		53				Mopar Remanufactured Part
	R2826100								w/or w/o ABS All Engines All Trans, Right
	04797700	1	H, K, Y						Mopar Remanufactured Part
		1	C, D, P		53				w/or w/o ABS All Engines All Trans, Left
		1	C, D, P		53				w/or w/o ABS All Engines All Trans, Left
3	04641181	1	H, K, Y						BOOT KIT, Half Shaft, Outer
	R2826075								w/or w/o ABS All Engines All Trans
	R2826075	1	C, D, P		53				Mopar Remanufactured Part
	R2826075								w/or w/o ABS All Engines All Trans
	R2826075								Mopar Remanufactured Part

CARAVAN, VOYAGER, TOWN AND COUNTRY (NS)

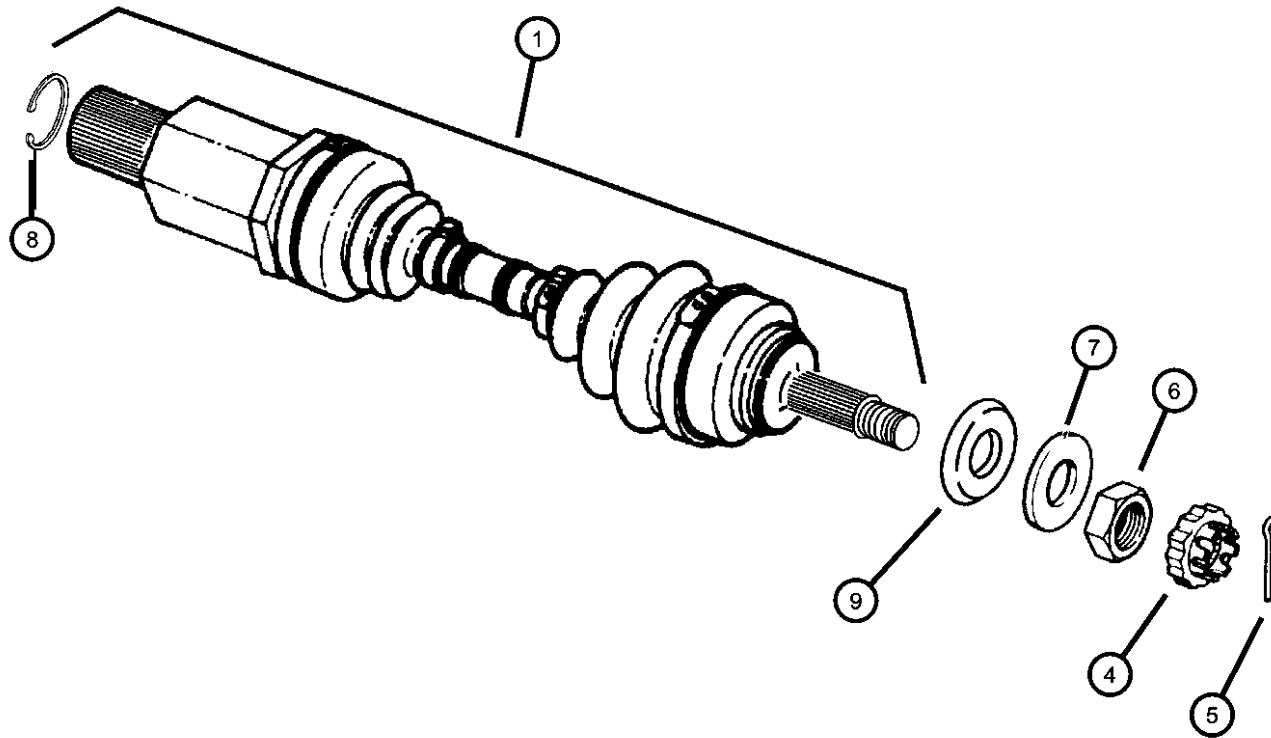
SERIES	LINE	BODY
L = Base	C = CHRYSLER AWD	52 = 113.3 SWB
H = LX, depor, SE	Y = CHRYSLER FWD	53 = 119.3 LWB
P = LXI, LE	D = DODGE AWD	
S = Limited	K = DODGE FWD	
X = ES	P = PLYMOUTH AWD	
	H = PLYMOUTH FWD	

ENGINE	TRANSMISSION
E98 = ELECTRIC MOTOR	DAC = SINGLE SPEED
EDZ = ENGINE - 2.4L 4 CYL	DGC = TRANSMISSION - 3-SPEED
DOHC 16V SMPI	AUTOMATIC
EFA = ENGINE - 3.0L V6	DGL = TRANSMISSION - 4-SPD.
SMPI	AUTOMATIC,41TE
EGA = ENGINE - 3.3L V6	
SMPI	
EGH = ENGINE - 3.8L V6	
SMPI	
EGM = ENGINE - 3.3L V6	
SMPI FFV	

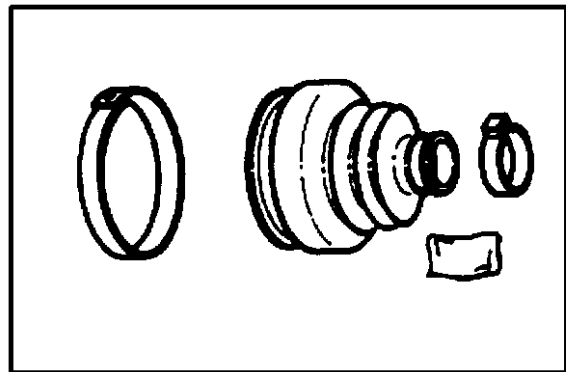
AR = use ase required - = Non illustrated part

1999 NS

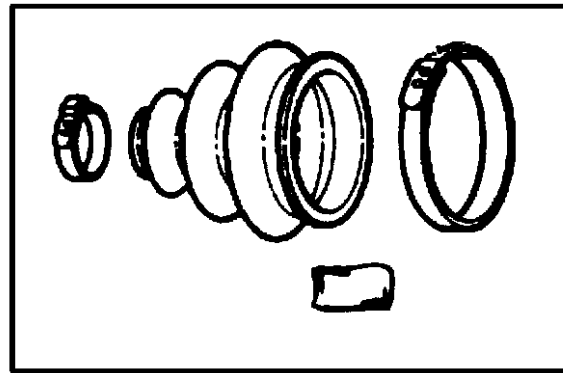
Shaft, Front Drive
Figure 2-245



ITEM	PART NUMBER	QTY	LINE	SERIES	BODY	ENGINE	TRANS	TRIM	DESCRIPTION
4	04293167	2	H, K, Y						NUT AND WASHER PACKAGE
		4	C, D, P		53				
5	06500336	2	H, K, Y						PIN, Cotter, M5x36.00
		4	C, D, P		53				
6	06500298	2	H, K, Y						NUT, Hub, M22x1.5
		4	C, D, P		53				
7	06503352	2	H, K, Y						WASHER, Flat, M23x38.0x4.05
		4	C, D, P		53				Hub ID=M23 OD=38.0 THK=4.05
8	04797704	1	H, K, Y						CIRCLIP, Half Shaft
		1	C, D, P		53				
9	04641698	1	H, K, Y						SHIELD, Wheel Bearing
		1	C, D, P		53				



2



3

CARAVAN, VOYAGER, TOWN AND COUNTRY (NS)

SERIES	LINE	BODY
L = Base	C = CHRYSLER AWD	52 = 113.3 SWB
H = LX, depor, SE	Y = CHRYSLER FWD	53 = 119.3 LWB
P = LXI, LE	D = DODGE AWD	
S = Limited	K = DODGE FWD	
X = ES	P = PLYMOUTH AWD	
	H = PLYMOUTH FWD	

ENGINE	TRANSMISSION
E98 = ELECTRIC MOTOR	DAC = SINGLE SPEED
EDZ = ENGINE - 2.4L 4 CYL	DGC = TRANSMISSION - 3-SPEED
DOHC 16V SMPI	AUTOMATIC
EFA = ENGINE - 3.0L V6	DGL = TRANSMISSION - 4-SPD.
SMPI	AUTOMATIC,41TE
EGA = ENGINE - 3.3L V6	
SMPI	
EGH = ENGINE - 3.8L V6	
SMPI	
EGM = ENGINE - 3.3L V6	
SMPI FFV	

AR = use ase required - = Non illustrated part

1999 NS

Group - 3

Rear Axle

Group - 3 Rear Axle

Group-Fig. No.

Illustration Title

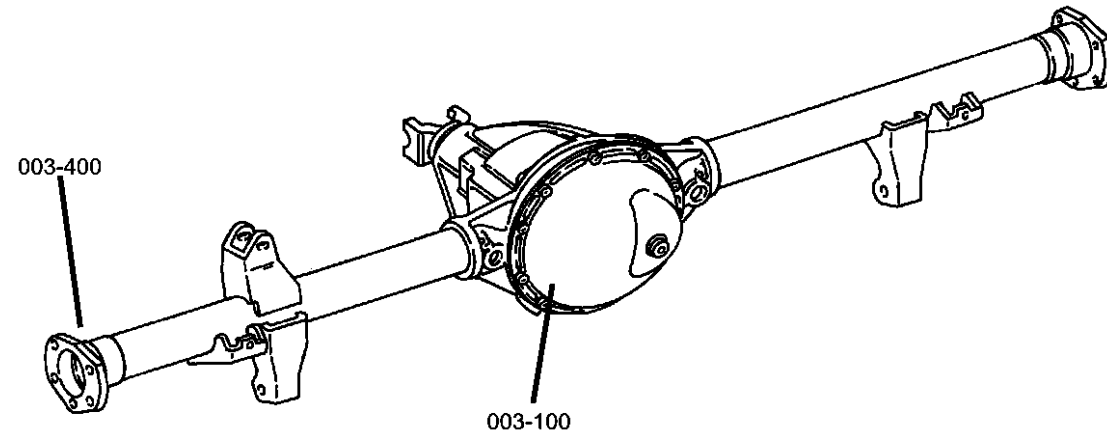
Rear Axle

Differential, Rear,Awd Fig. 3 - 115

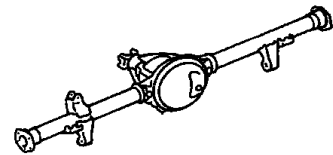
Torque Tube Assembly Fig. 3 - 130

Rear Axle Shafts

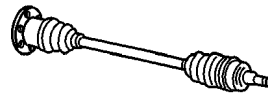
Shaft, Rear Axle,Awd Fig. 3 - 420



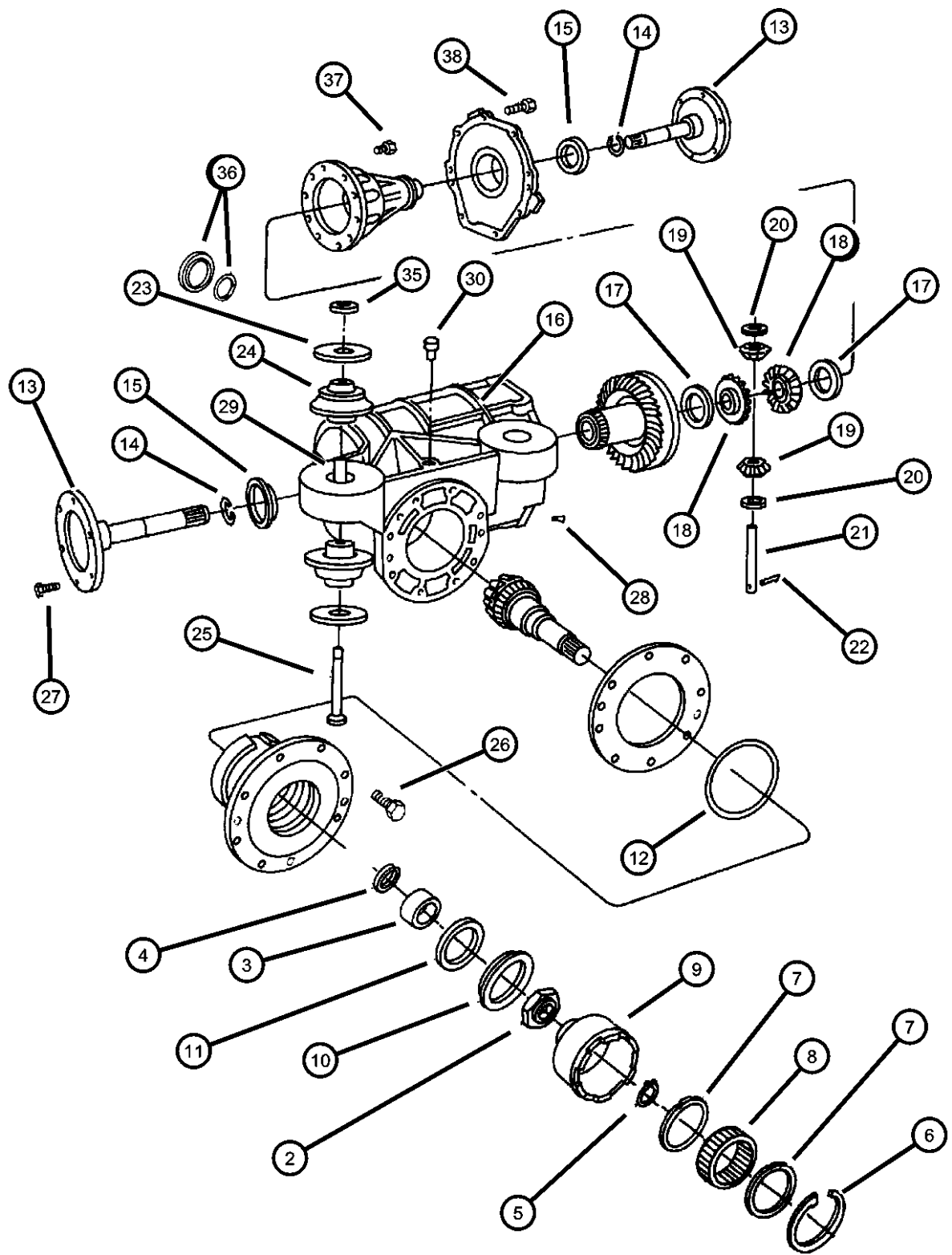
003-100
Rear Axle



003-400
Rear Axle Shafts



Differential, Rear,Awd
Figure 3-115



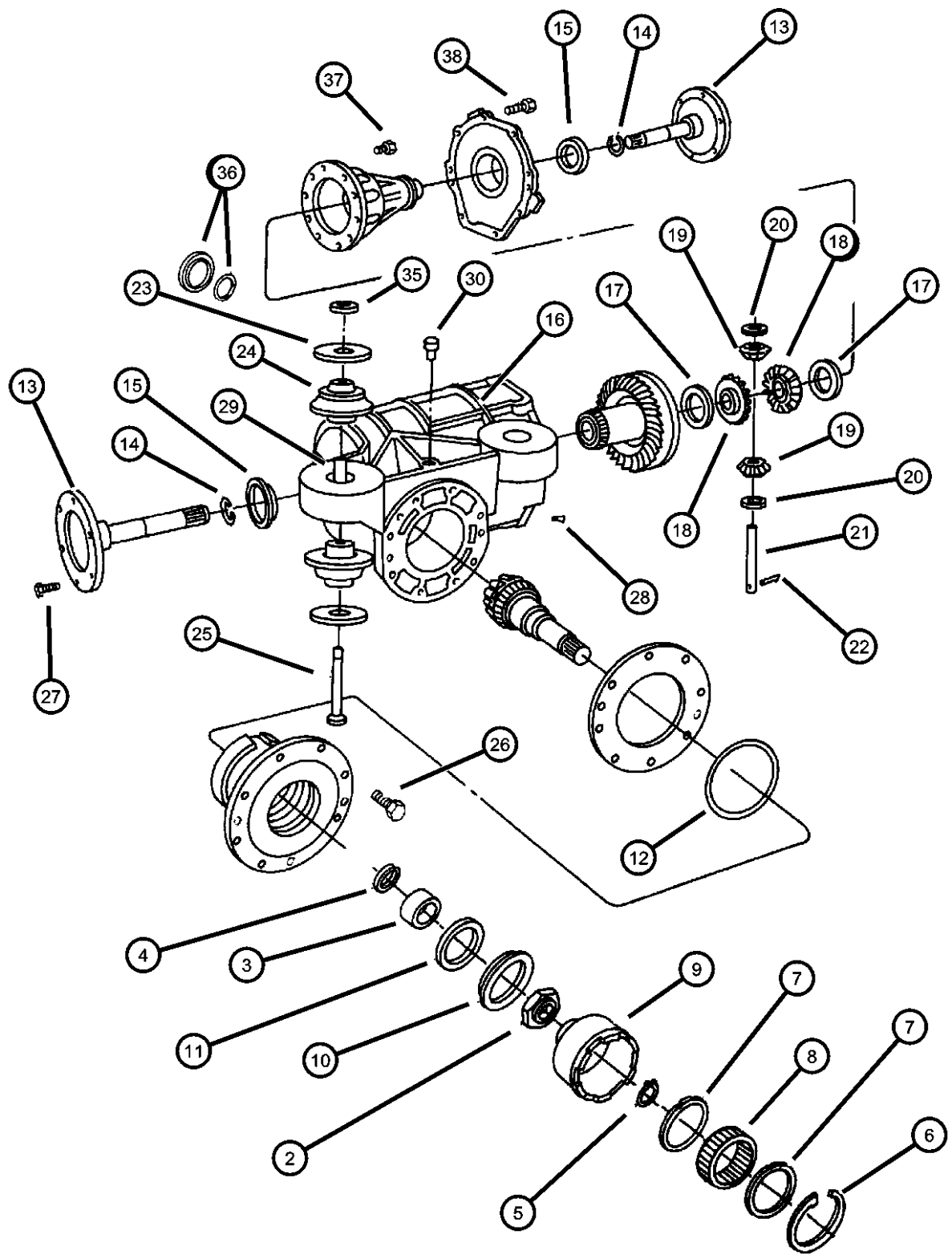
ITEM	PART NUMBER	QTY	LINE	SERIES	BODY	ENGINE	TRANS	TRIM	DESCRIPTION
-1	04518960	1	C, D, P		53				CARRIER, Differential, Assembly Complete
2	04518766	1	C, D, P		53				NUT, Hex Flange Lock, M30X1.50
3	04518143	1	C, D, P		53				SPACER, Drive Pinion
4	04641415	AR	C, D, P		53				SHIM, Output Shaft, 4.67 - 4.69mm
5	04486755	1	C, D, P		53				SNAP RING
6	04659652	1							SNAP RING
7	04518536	1	C, D, P		53				SPACER, Overrunning Clutch
8	04518953	1	C, D, P		53				CLUTCH, Rear Axle, Over Running
9	04518510	1	C, D, P		53				RACE, Overrunning Clutch
10	04637109AB	1	C, D, P		53				SEAL PACKAGE, Differential Carrier
11	04637109AB	1	C, D, P		53				SEAL PACKAGE, Differential Carrier
12	04486077	1	C, D, P		53				O RING, PTU Case Rear Cover
13	04518920	2	C, D, P		53				OUTPUT SHAFT, Rear Axle, Carrier Output
14	04518780	2	C, D, P		53				SNAP RING, Joint Retaining
15	04641848AA	2	C, D, P		53				SEAL, Extension
16	04641848AA	2							CASE ASSEMBLY, Differential, Rear Differential (Serviced in Assembly), (NOT SERVICED)
17	04504568	1	C, D, P		53				WASHER PACKAGE, Side Gear Thrust, .028/.026, .033/.031, .038/.036, .043/.041, .048/.046
18	04659502	2	C, D, P		53				GEAR, Differential Side
19	04348679	2							PINION, Differential
20	04137024	2	C, D, P		53				WASHER, Pinion Thrust, Pinion Gear
21	04659142	1							SHAFT, Pinion Gear
22	06503827	1							PIN, Pinion Shaft
23	04486903	2	C, D, P		53				WASHER, Rear Axle Isolator, ID=M11 OD=65.00 THK=0.40
24	04486901	4	C, D, P		53				BUSHING, Isolator, Carrier (Rubber)
25	04518329	1	C, D, P		53				BOLT, Rear Carrier
26	04518329	1							SCREW, (NOT SERVICED)

CARAVAN, VOYAGER, TOWN AND COUNTRY (NS)

SERIES	LINE	BODY	ENGINE	TRANSMISSION
L = Base	C = CHRYSLER AWD	52 = 113.3 SWB	E98 = ELECTRIC MOTOR	DAC = SINGLE SPEED
H = LX, depor, SE	Y = CHRYSLER FWD	53 = 119.3 LWB	EDZ = ENGINE - 2.4L 4 CYL DOHC 16V SMPI	DGC = TRANSMISSION - 3-SPEED AUTOMATIC
P = LXI, LE	D = DODGE AWD		EFA = ENGINE - 3.0L V6 SMPI	DGL = TRANSMISSION - 4-SPD. AUTOMATIC,41TE
S = Limited	K = DODGE FWD		EGA = ENGINE - 3.3L V6 SMPI	
X = ES	P = PLYMOUTH AWD		EGH = ENGINE - 3.8L V6 SMPI	
	H = PLYMOUTH FWD		EGM = ENGINE - 3.3L V6 SMPI FFV	

AR = use ase required - = Non illustrated part

Differential, Rear,Awd
Figure 3-115



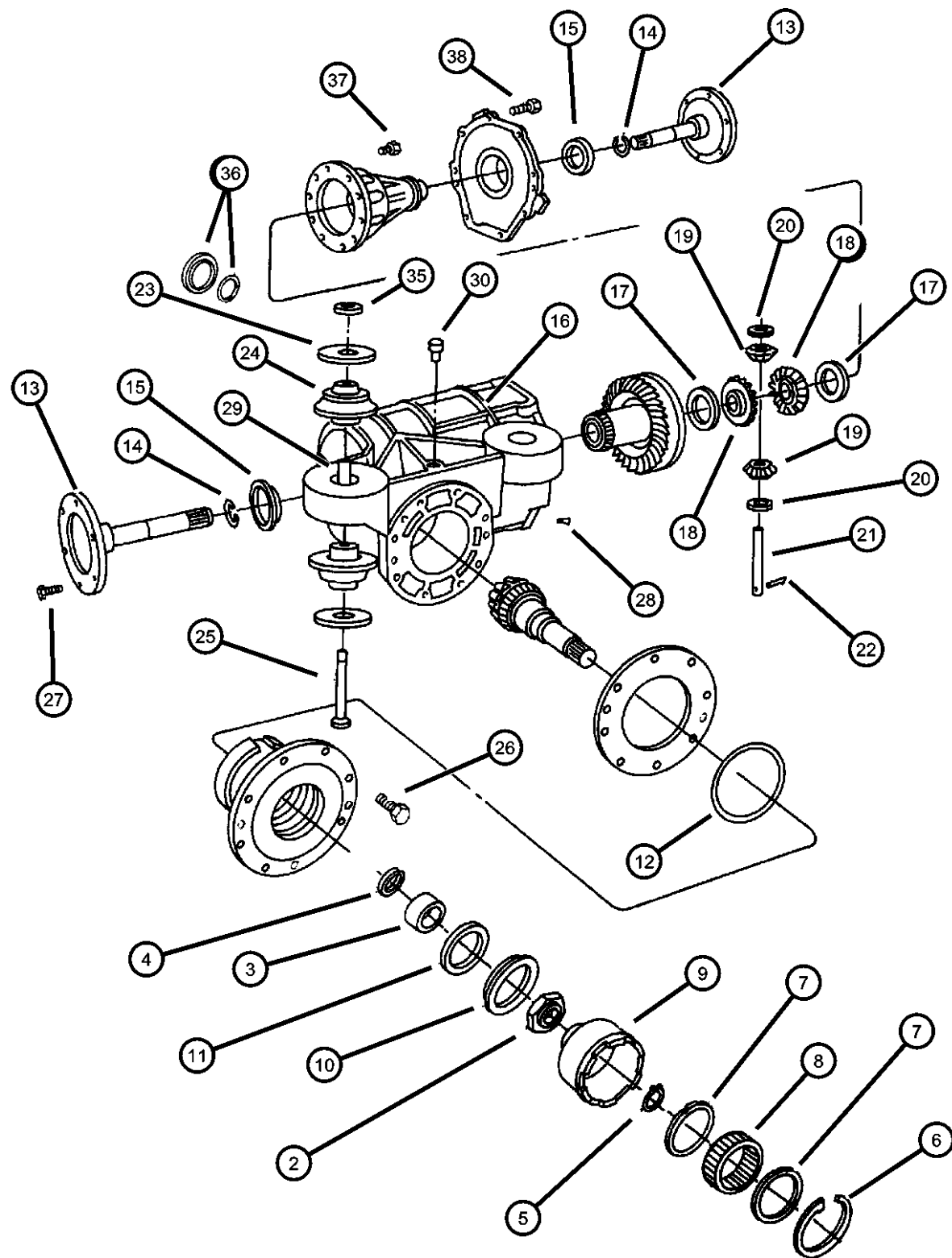
ITEM	PART NUMBER	QTY	LINE	SERIES	BODY	ENGINE	TRANS	TRIM	DESCRIPTION
27	06502350	12	C, D, P		53				BOLT, Hex Flange Head, M10x1.50x25, Axle Shaft to Output Shaft
28	04486046	1	C, D, P		53				MAGNET, Power Take Off, Rear Drive Module End Cover
29	04486902	4	C, D, P		53				SLEEVE, Carrier Rubber, Isolator
30	02124715	1	C, D, P		53				VENT, Cap, Jiggle
-31	04641681	1	C, D, P		53				HOSE, Axle Vent
-32	04641290	AR							RESERVOIR, Rear Carrier, Remote Vent
-33	04213328	1	C, D, P		53				VENT, Cap, Hose
-34	04641701	1	C, D, P		53				CLAMP, Axle Vent, Assembly
35	04518308	2	C, D, P		53				WASHER, Rear Axle Isolator, ID=M11 OD=65.00 THK=0.40
36	04637108	1	C, D, P		53				PLUG PACKAGE, Fill
37	04637108	1							BOLT, Ring Gear, (NOT SERVICED)
38	06504171	6	C, D, P		53				SCREW, Hex Flange Head, M8x1.25x32
-39	04641416	AR	C, D, P		53				SHIM, Output Shaft, 4.70 - 4.72mm
-40	04641417	AR	C, D, P		53				SHIM, Output Shaft, 4.73 - 4.75mm
-41	04641418	AR	C, D, P		53				SHIM, Output Shaft, 4.76 - 4.78mm
-42	04641419	AR	C, D, P		53				SHIM, Output Shaft, 4.79 - 4.81mm
-43	04641420	AR	C, D, P		53				SHIM, Output Shaft, 4.82 - 4.84mm
-44	04641421	AR	C, D, P		53				SHIM, Output Shaft, 4.85 - 4.87mm
-45	04641422	AR	C, D, P		53				SHIM, Output Shaft, 4.88 - 4.90mm
-46	04641423	AR	C, D, P		53				SHIM, Output Shaft, 4.91 - 4.93mm
-47	04641424	AR	C, D, P		53				SHIM, Output Shaft, 4.94 - 4.96mm
-48	04641425	AR	C, D, P		53				SHIM, Output Shaft, 4.97 - 4.99mm
-49	04641426	AR	C, D, P		53				SHIM, Output Shaft, 5.00 - 5.02mm
-50	04641427	AR	C, D, P		53				SHIM, Output Shaft, 5.03 - 5.05mm
-51	04641428	AR	C, D, P		53				SHIM, Output Shaft, 5.06 - 5.08mm
-52	04641429	AR	C, D, P		53				SHIM, Output Shaft, 5.09 - 5.11mm
-53	04641430	AR	C, D, P		53				SHIM, Output Shaft, 5.12 - 5.14mm

CARAVAN, VOYAGER, TOWN AND COUNTRY (NS)

SERIES	LINE	BODY	ENGINE	TRANSMISSION
L = Base	C = CHRYSLER AWD	52 = 113.3 SWB	E98 = ELECTRIC MOTOR	DAC = SINGLE SPEED
H = LX, depor, SE	Y = CHRYSLER FWD	53 = 119.3 LWB	EDZ = ENGINE - 2.4L 4 CYL	DGC = TRANSMISSION - 3-SPEED
P = LXI, LE	D = DODGE AWD		DOHC 16V SMPI	AUTOMATIC
S = Limited	K = DODGE FWD		EFA = ENGINE - 3.0L V6	DGL = TRANSMISSION - 4-SPD.
X = ES	P = PLYMOUTH AWD		SMPI	AUTOMATIC,41TE
	H = PLYMOUTH FWD		EGA = ENGINE - 3.3L V6	
			SMPI	
			EGH = ENGINE - 3.8L V6	
			SMPI	
			EGM = ENGINE - 3.3L V6	
			SMPI FFV	

AR = use ase required - = Non illustrated part

Differential, Rear,Awd
Figure 3-115



ITEM	PART NUMBER	QTY	LINE	SERIES	BODY	ENGINE	TRANS	TRIM	DESCRIPTION
-54	04641431	AR	C, D, P		53				SHIM, Output Shaft, 5.15 - 5.17mm
-55	04641432	AR	C, D, P		53				SHIM, Output Shaft, 5.18 - 5.20mm
-56	04641433	AR	C, D, P		53				SHIM, Output Shaft, 5.21 - 5.23mm
-57	04641434	AR	C, D, P		53				SHIM, Output Shaft, 5.24 - 5.26mm
-58	04641435	AR	C, D, P		53				SHIM, Output Shaft, 5.27 - 5.29mm
-59	04641436	AR	C, D, P		53				SHIM, Output Shaft, 5.30 - 5.35mm
-60	04641437	AR	C, D, P		53				SHIM, Output Shaft, 5.33 - 5.35mm
-61	04641438	AR	C, D, P		53				SHIM, Output Shaft, 5.36 - 5.38mm
-62	04641439	AR	C, D, P		53				SHIM, Output Shaft, 5.39 - 5.41mm
-63	04641440	AR	C, D, P		53				SHIM, Output Shaft, 5.42 - 5.44mm
-64	04641441	AR	C, D, P		53				SHIM, Output Shaft, 5.45 - 5.47mm
-65	04641442	AR	C, D, P		53				SHIM, Output Shaft, 5.48 - 5.50mm
-66	04641443	AR	C, D, P		53				SHIM, Output Shaft, 5.51 - 5.53mm
-67	04641444	AR	C, D, P		53				SHIM, Output Shaft, 5.54 - 5.56mm
-68	04641445	AR	C, D, P		53				SHIM, Output Shaft, 5.57 - 5.59mm
-69	04641446	AR	C, D, P		53				SHIM, Output Shaft, 5.60 - 5.62mm
-70	04641447	AR	C, D, P		53				SHIM, Output Shaft, 5.63 - 5.65mm
-71	04641448	AR	C, D, P		53				SHIM, Output Shaft, 5.66 - 5.68mm
-72	04641449	AR	C, D, P		53				SHIM, Output Shaft, 5.69 - 5.71mm
-73	04412016	AR	C, D, P		53				THRUST WASHER, Differential, .051-.053
-74	04412017	AR	C, D, P		53				THRUST WASHER, Differential, .056-.058

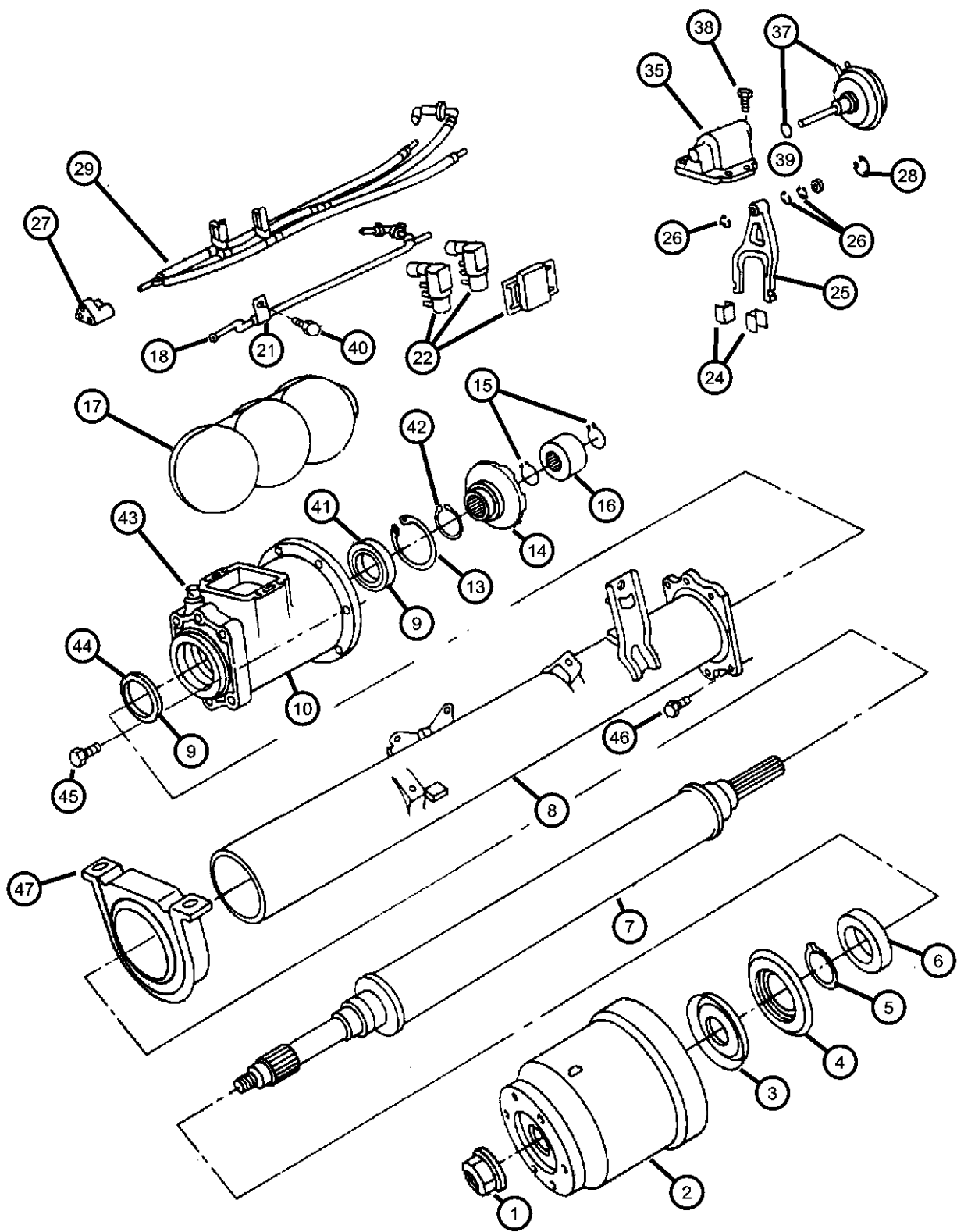
CARAVAN, VOYAGER, TOWN AND COUNTRY (NS)

SERIES	LINE	BODY
L = Base	C = CHRYSLER AWD	52 = 113.3 SWB
H = LX, depor, SE	Y = CHRYSLER FWD	53 = 119.3 LWB
P = LXI, LE	D = DODGE AWD	
S = Limited	K = DODGE FWD	
X = ES	P = PLYMOUTH AWD	
	H = PLYMOUTH FWD	

ENGINE	TRANSMISSION
E98 = ELECTRIC MOTOR	DAC = SINGLE SPEED
EDZ = ENGINE - 2.4L 4 CYL DOHC 16V SMPI	DGC = TRANSMISSION - 3-SPEED AUTOMATIC
EFA = ENGINE - 3.0L V6 SMPI	DGL = TRANSMISSION - 4-SPD. AUTOMATIC,41TE
EGA = ENGINE - 3.3L V6 SMPI	
EGH = ENGINE - 3.8L V6 SMPI	
EGM = ENGINE - 3.3L V6 SMPI FFV	

AR = use ase required - = Non illustrated part

Torque Tube Assembly
Figure 3-130



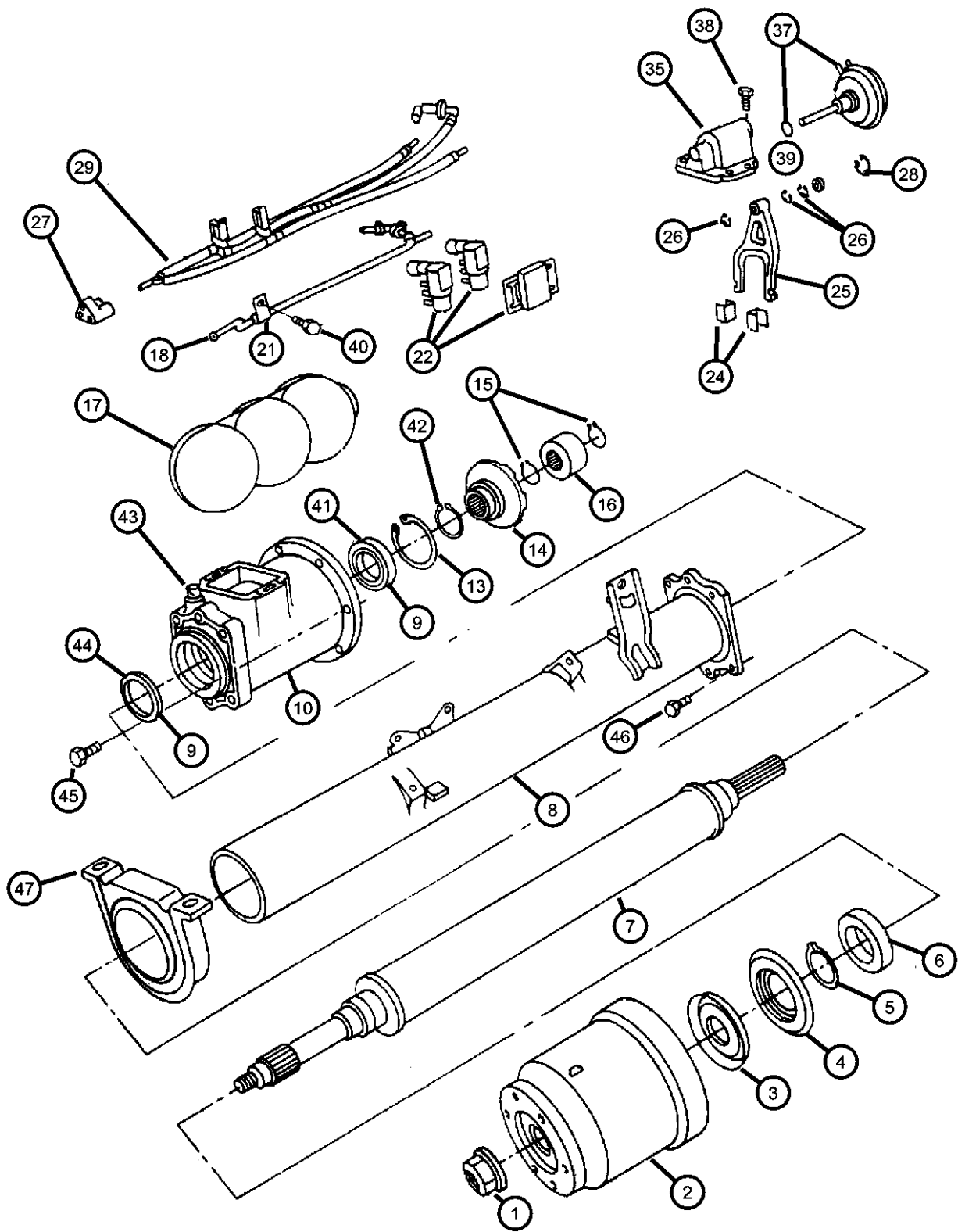
ITEM	PART NUMBER	QTY	LINE	SERIES	BODY	ENGINE	TRANS	TRIM	DESCRIPTION
1	04518903	1	C, D, P		53				NUT, Hex Flange Lock, M16x1.5, Viscous Coupling to Torque Shaft
2	04736325	1	C, D, P		53				VISCOUS COUPLING
3	04641756	1	C, D, P		53				PLATE, Transmission Module, GUARD Viscous Coupling
4	04641578	1	C, D, P		53				SHIELD, Bearing, Torque tube
5	04518551	1	C, D, P		53				RETAINING RING, Bearing
6	04486164	1	C, D, P		53				BEARING, Viscous Coupling, Torque Shaft Stub VCU End
7	04641630	1	C, D, P		53				SHAFT, Torque
8	04641810	1	C, D, P		53				TUBE, Torque, (Aluminum)
9	04637106AB	1	C, D, P		53				BEARING PACKAGE, Torque Shaft
10	04641222	1	C, D, P		53				CASE, Overrunning Clutch
-11	06035417	1	C, D, P		53				PLUG, Oil Drain, Filler (Side Case-Over Running Clutch)
-12	06032145	1	C, D, P		53				GASKET, Drain Plug, Flat (Drain Plug cover Fill Plug)
13	04486166	1	C, D, P		53				SNAP RING, ORC Bearing Retaining
14	04518945	1	C, D, P		53				CLUTCH, Torque Tube, ORC Dog
15	04486755	2	C, D, P		53				SNAP RING, ORC Race
16	04518944	1	C, D, P		53				RACE, Overrunning Clutch, ORC Inner
17	04518804	1	C, D, P		53				RESERVOIR, Vacuum, ORC
18	04641644	1	C, D, P		53				TUBE, Rear Axle Vacuum, ORC Rear Main Vacuum, Steel
-19	04641532	1	C, D, P		53				HARNESSE, Overrunning Clutch Vacuum, ORC Rear Main Vacuum (w/Vent and Tube Assy)
-20	04641005	1	C, D, P		53				CLAMP, Hose, Tube ORC Rear Main Vac
21	02207919	2	C, D, P		53				CLIP, Parking Brake Cable, Rear Main Vacuum to Torque Tube
22	05234219	1	C, D, P		53				SOLENOID, Overrunning Clutch, Vacuum-Dual
-23	05227034	1	C, D, P		53				BRACKET, Vacuum Solenoid, Dual Vac Sol
24	04338589	2	C, D, P		53				PAD, Shift Fork

CARAVAN, VOYAGER, TOWN AND COUNTRY (NS)

SERIES	LINE	BODY	ENGINE	TRANSMISSION
L = Base	C = CHRYSLER AWD	52 = 113.3 SWB	E98 = ELECTRIC MOTOR	DAC = SINGLE SPEED
H = LX, depor, SE	Y = CHRYSLER FWD	53 = 119.3 LWB	EDZ = ENGINE - 2.4L 4 CYL DOHC 16V SMPI	DGC = TRANSMISSION - 3-SPEED AUTOMATIC
P = LXI, LE	D = DODGE AWD		EFA = ENGINE - 3.0L V6 SMPI	DGL = TRANSMISSION - 4-SPD. AUTOMATIC,41TE
S = Limited	K = DODGE FWD		EGA = ENGINE - 3.3L V6 SMPI	
X = ES	P = PLYMOUTH AWD		EGH = ENGINE - 3.8L V6 SMPI	
	H = PLYMOUTH FWD		EGM = ENGINE - 3.3L V6 SMPI FFV	

AR = use ase required - = Non illustrated part

Torque Tube Assembly
Figure 3-130



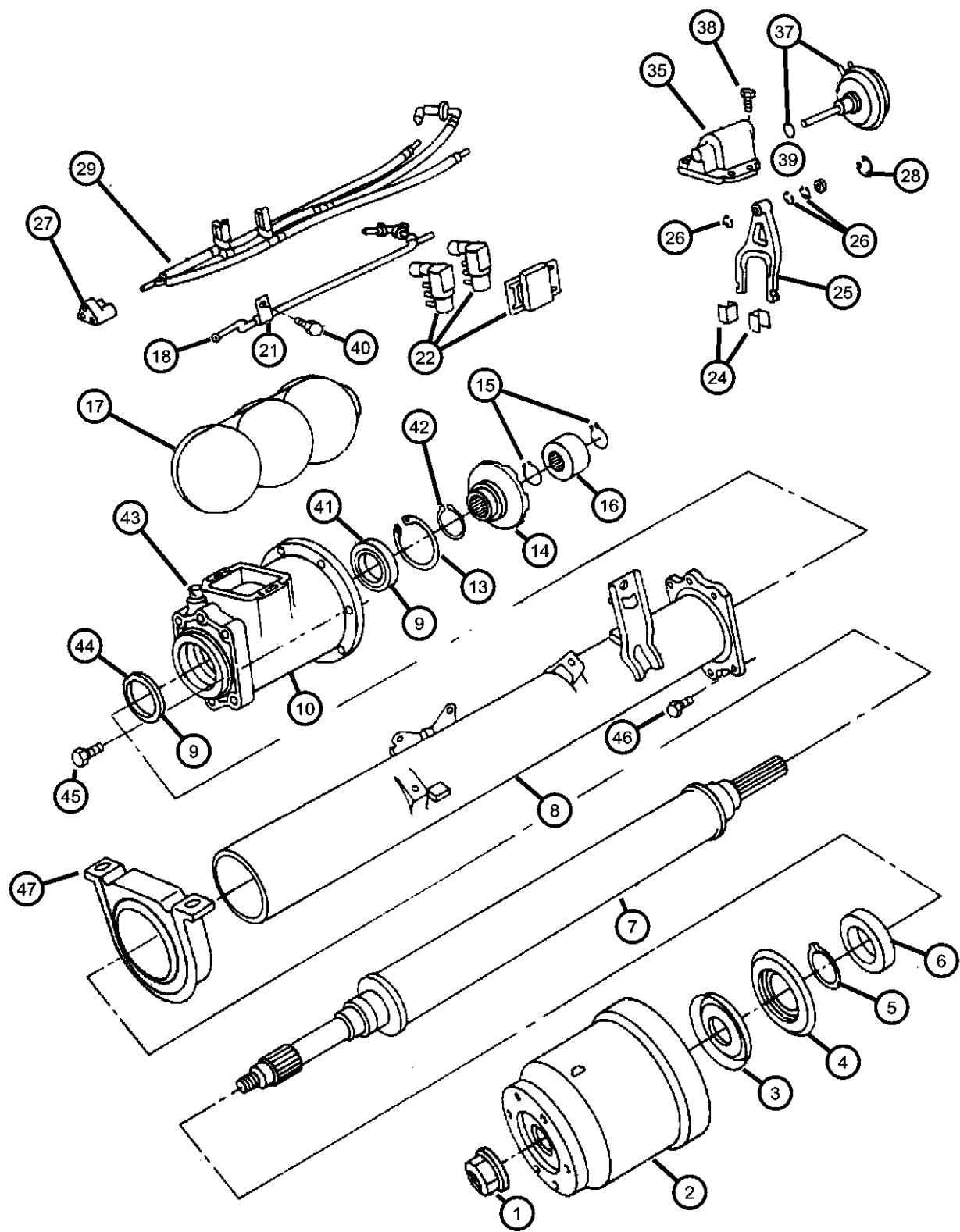
ITEM	PART NUMBER	QTY	LINE	SERIES	BODY	ENGINE	TRANS	TRIM	DESCRIPTION
25	04518939	1	C, D, P		53				FORK PACKAGE, Overrunning Clutch, Shift
26	06023878	2	C, D, P		53				SNAP RING, .302 ID .66 OD
27	04431325	1	C, D, P		53				CONNECTOR, Front Axle Vacuum Harness, Tube Reservoir to Solenoid Vac
28	06023879	1	C, D, P		53				SNAP RING, Vacuum Motor, Retainer ID=.483 OD=.94 THK=.044
29	04641532	1	C, D, P		53				HARNESSE, Overrunning Clutch Vacuum, Rear Main
-30	04641573	1	C, D, P		53				TUBE, Vacuum, Vacuum Front Main Harness
-31	04518881	2	C, D, P		53				SLEEVE, Tubing Cover, Vac Tube Over Running Clutch
-32	04100727	1	C, D, P		53				CONNECTOR, Manifold Vacuum, (4641712,4641713)
-33	04641015	2	C, D, P		53				CLAMP, Hose, Aluminum, (4641712,4641713)
-34	03671410	1	C, D, P		53				TEE, Washer Hose
35	04641223	1	C, D, P		53				HOUSING, Overrunning Actuator, ORC Shift Fork
-36	06023878	2	C, D, P		53				SNAP RING, .302 ID .66 OD, E-Ring Cover ORC Shift Fork
37	04641566	1	C, D, P		53				MOTOR, Axle Vacuum
38	06100166	4	C, D, P		53				BOLT, Hex Head, M10x25
39	04641017	1	C, D, P		53				O RING, Vacuum Motor
40	06503472	1	C, D, P		53				SCREW, Self Tapping, M6x1x17
41	04637106AB	1	C, D, P		53				BEARING PACKAGE, Torque Shaft
42	04518551	1	C, D, P		53				RETAINING RING, Bearing, w/4 Tabs
43	04641532	1	C, D, P		53				HARNESSE, Overrunning Clutch Vacuum, Case Over Running
44	04641532	1							SEAL, [See Item #41], (NOT SERVICED)
45	04641532	1							SCREW, (NOT SERVICED)
46	06504171	6	C, D, P		53				SCREW, Hex Flange Head, M8x1.25x32, Torque Tube to Case

CARAVAN, VOYAGER, TOWN AND COUNTRY (NS)

SERIES	LINE	BODY	ENGINE	TRANSMISSION
L = Base	C = CHRYSLER AWD	52 = 113.3 SWB	E98 = ELECTRIC MOTOR	DAC = SINGLE SPEED
H = LX, depor, SE	Y = CHRYSLER FWD	53 = 119.3 LWB	EDZ = ENGINE - 2.4L 4 CYL DOHC 16V SMPI	DGC = TRANSMISSION - 3-SPEED AUTOMATIC
P = LXI, LE	D = DODGE AWD		EFA = ENGINE - 3.0L V6 SMPI	DGL = TRANSMISSION - 4-SPD. AUTOMATIC,41TE
S = Limited	K = DODGE FWD		EGA = ENGINE - 3.3L V6 SMPI	
X = ES	P = PLYMOUTH AWD		EGH = ENGINE - 3.8L V6 SMPI	
	H = PLYMOUTH FWD		EGM = ENGINE - 3.3L V6 SMPI FFV	

AR = use ase required - = Non illustrated part

Torque Tube Assembly
Figure 3-130



ITEM	PART NUMBER	QTY	LINE	SERIES	BODY	ENGINE	TRANS	TRIM	DESCRIPTION
47	04486317	1	C, D, P		53				BRACKET, Torque Shaft
-48	04641715	1	C, D, P		53				CLIP, Actuation Tube, (ORC)
-49	04518887	1	C, D, P		53				TUBE, Rear Axle Vent Solenoid
-50	04641708	1	C, D, P		53				VENT, Rear Axle Overrunning Clutch, (Rubber)
-51	04518591	2	C, D, P		53				TUBE, Vacuum, Rubber Vent
-52	06501586	1	C, D, P		53				SCREW, Hex Flange Head, ORC CAsE to Frt Carrier Cover
-53	04486165	1	C, D, P		53				RETAINING RING, Bearing, 1.80, w/o Tabs
-54	04518943	7	C, D, P		53				CLIP, Tube To Crossmember, 1 Way
-55	04458158	1	C, D, P		53				FILTER, Vacuum Solenoid
-56	04458158	1							CONNECTOR, [In Line Vet (Service in Assy)], (NOT SERVICED)
-57	04641015	2	C, D, P		53				CLAMP, Hose, Aluminum, Keystone
-58	04641008	1	C, D, P		53				CLAMP, Hose Steel Keystone

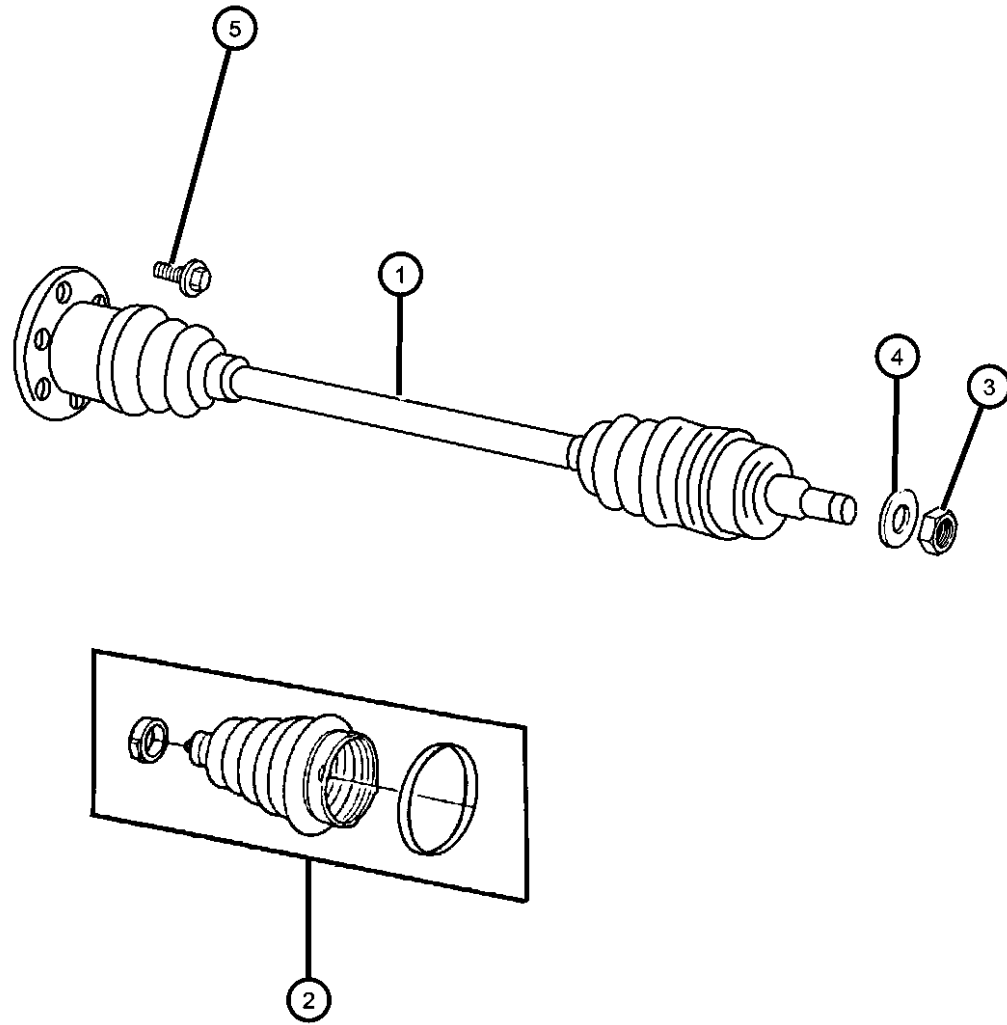
CARAVAN, VOYAGER, TOWN AND COUNTRY (NS)

SERIES	LINE	BODY	ENGINE	TRANSMISSION
L = Base	C = CHRYSLER AWD	52 = 113.3 SWB	E98 = ELECTRIC MOTOR	DAC = SINGLE SPEED
H = LX, depor, SE	Y = CHRYSLER FWD	53 = 119.3 LWB	EDZ = ENGINE - 2.4L 4 CYL DOHC 16V SMPI	DGC = TRANSMISSION - 3-SPEED AUTOMATIC
P = LXI, LE	D = DODGE AWD		EFA = ENGINE - 3.0L V6 SMPI	DGL = TRANSMISSION - 4-SPD. AUTOMATIC,41TE
S = Limited	K = DODGE FWD		EGA = ENGINE - 3.3L V6 SMPI	
X = ES	P = PLYMOUTH AWD		EGH = ENGINE - 3.8L V6 SMPI	
	H = PLYMOUTH FWD		EGM = ENGINE - 3.3L V6 SMPI FFV	

AR = use ase required - = Non illustrated part

**Shaft, Rear Axle,Awd
Figure 3-420**

ITEM	PART NUMBER	QTY	LINE	SERIES	BODY	ENGINE	TRANS	TRIM	DESCRIPTION
1	04660588AB	2	C, D, P		53				SHAFT, Axle Half
2	05016941AA	2	C, D, P		53				BOOT KIT, Half Shaft, Inner and Outer
3	06500298	4	C, D, P		53				NUT, Hub, M22x1.5
4	06503352	4	C, D, P		53				WASHER, Flat, M23x38.0x405
5	06502350	12	C, D, P		53				BOLT, Hex Flange Head, M10x1.50x25, Axle Shaft to Output Shaft
-6	06100745	1							STUD, Traction motor



CARAVAN, VOYAGER, TOWN AND COUNTRY (NS)

SERIES	LINE	BODY
L = Base	C = CHRYSLER AWD	52 = 113.3 SWB
H = LX, depor, SE	Y = CHRYSLER FWD	53 = 119.3 LWB
P = LXI, LE	D = DODGE AWD	
S = Limited	K = DODGE FWD	
X = ES	P = PLYMOUTH AWD	
	H = PLYMOUTH FWD	

ENGINE	TRANSMISSION
E98 = ELECTRIC MOTOR	DAC = SINGLE SPEED
EDZ = ENGINE - 2.4L 4 CYL	DGC = TRANSMISSION - 3-SPEED
DOHC 16V SMPI	AUTOMATIC
EFA = ENGINE - 3.0L V6	DGL = TRANSMISSION - 4-SPD.
SMPI	AUTOMATIC,41TE
EGA = ENGINE - 3.3L V6	
SMPI	
EGH = ENGINE - 3.8L V6	
SMPI	
EGM = ENGINE - 3.3L V6	
SMPI FFV	

AR = use ase required - = Non illustrated part

1999 NS

Group - 4

Parking Brake

Group - 4 Parking Brake

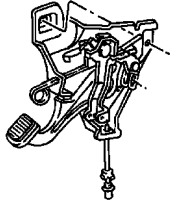
Group-Fig. No.

Illustration Title

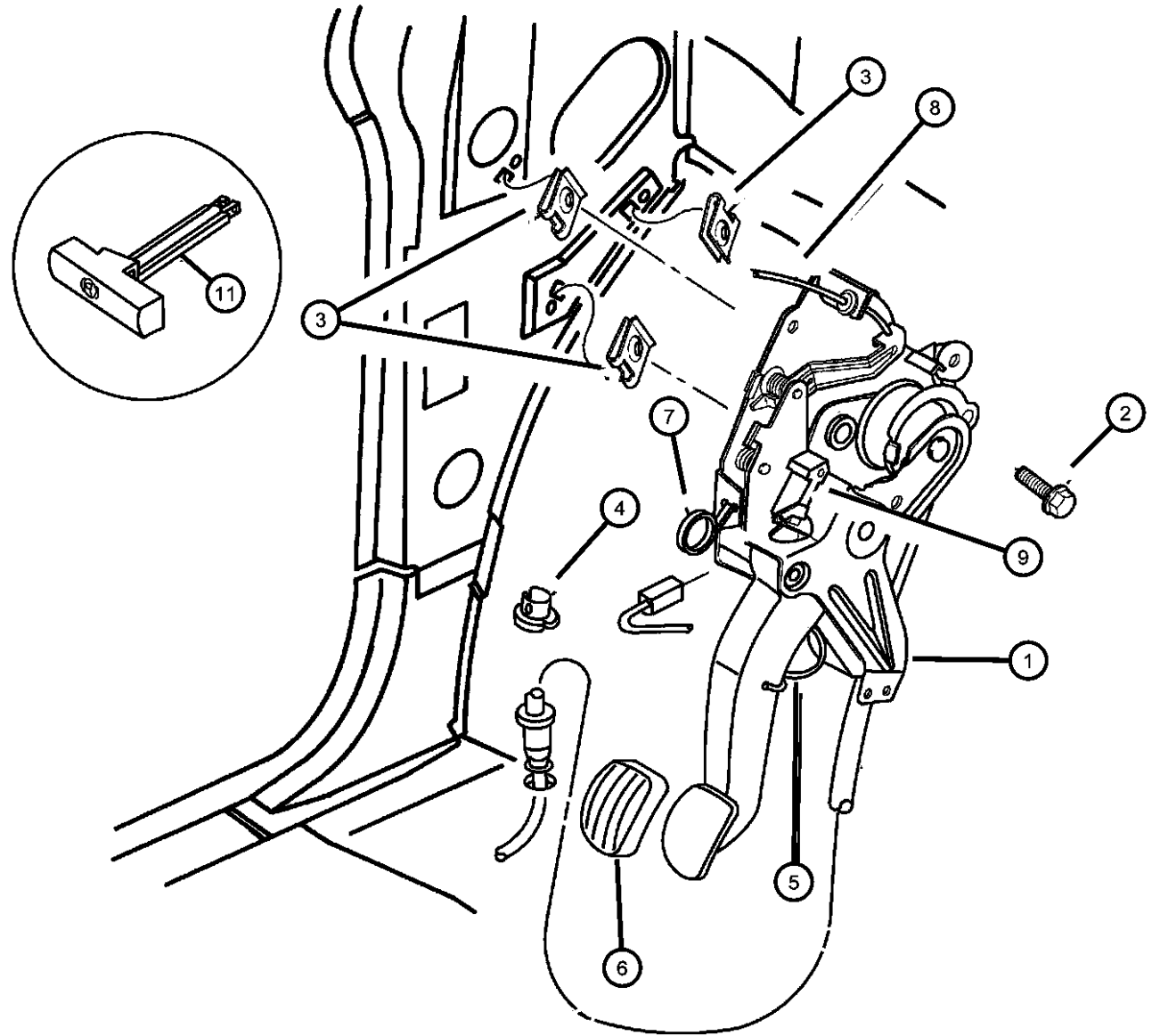
Parking Brake Lever and Cables

Lever, Parking Brake.....	Fig. 4 - 142
Cables, Parking Brake.....	Fig. 4 - 147

004-100
Parking Brake Lever and Cables



Lever, Parking Brake
Figure 4-142



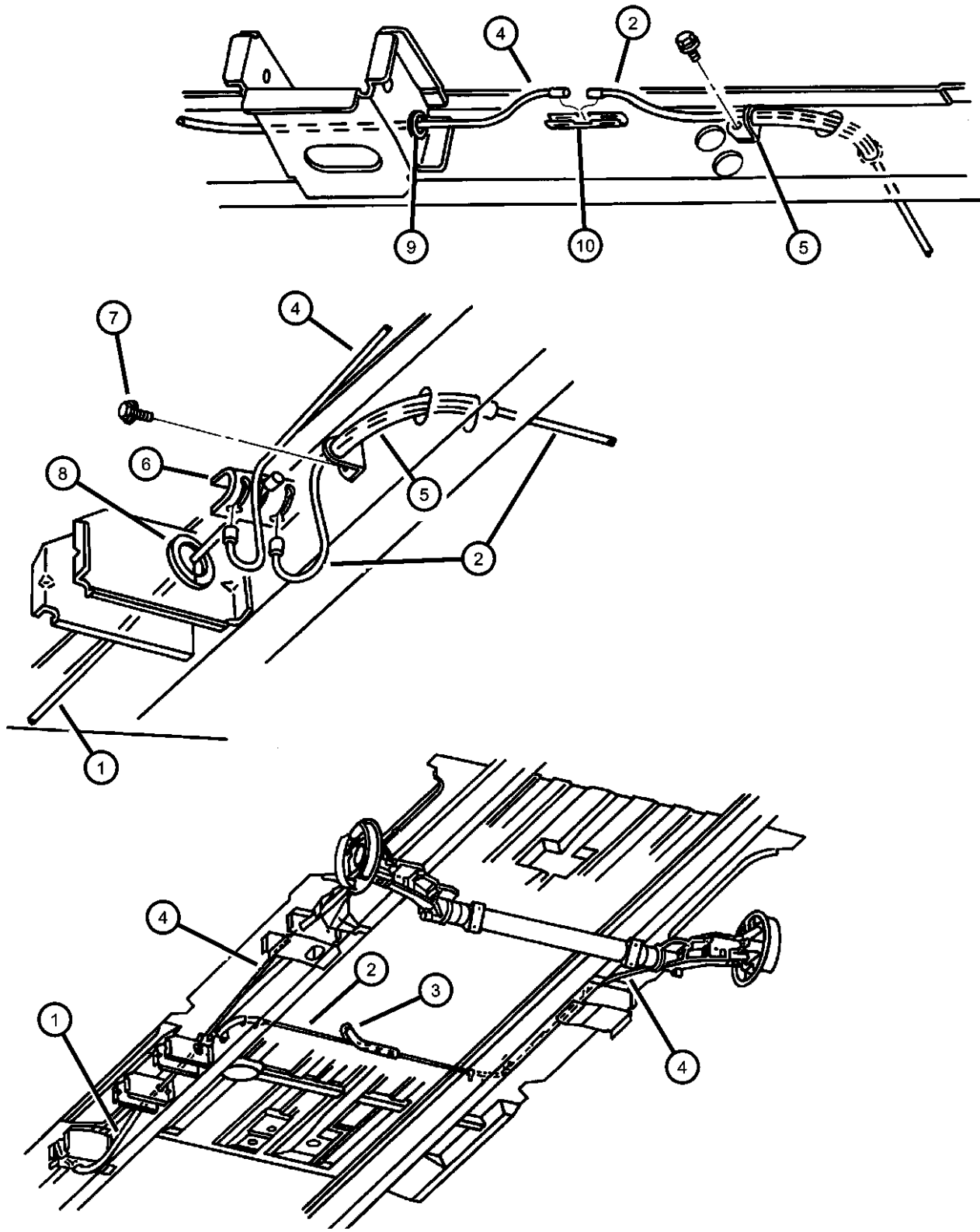
ITEM	PART NUMBER	QTY	LINE	SERIES	BODY	ENGINE	TRANS	TRIM	DESCRIPTION
1	04683277	1							LEVER, Park Brake
2	06503792	3							SCREW AND WASHER, Hex Head, M8-1.25x32.00
3	06101283	3							U-NUT, M8x1.25, Multi THD Parking Brake Lever Mount
4	04683544	1							RETAINER, Parking Brake Cable
5	04683544	1							PIN, Auto Adjuster Lockout (Service in Assy), (NOT SERVICED)
6	04683478	1							PAD, Parking Brake Lever
7	04683478	1							TAB, Thumb, Lockout Pawl (Service in Assy), (NOT SERVICED)
8	04683282AC	1							CABLE, Parking Brake
9	04685395	1							SWITCH, Parking Brake
-10	00154553	1							SCREW, Hex Head, .19-16x1
11									HANDLE, Parking Brake
	0HV18RC3AB	1							(Mist Gray)
	0HV18RJKAB	1							(Med or Dark Silverfern)
	0HV18RK5AB	1							(Camel/Tan Agate)
	0HV18WL5AB	1							(Taupe)
-12	06032723	1							SCREW, Self Tapping, M4.2x1.69x19.05, I/P Park Brake Rel Handle to I/Pnl .164-15x.750

CARAVAN, VOYAGER, TOWN AND COUNTRY (NS)

SERIES	LINE	BODY	ENGINE	TRANSMISSION
L = Base	C = CHRYSLER AWD	52 = 113.3 SWB	E98 = ELECTRIC MOTOR	DAC = SINGLE SPEED
H = LX, depor, SE	Y = CHRYSLER FWD	53 = 119.3 LWB	EDZ = ENGINE - 2.4L 4 CYL	DGC = TRANSMISSION - 3-SPEED
P = LXI, LE	D = DODGE AWD		DOHC 16V SMPI	AUTOMATIC
S = Limited	K = DODGE FWD		EFA = ENGINE - 3.0L V6	DGL = TRANSMISSION - 4-SPD.
X = ES	P = PLYMOUTH AWD		SMPI	AUTOMATIC,41TE
	H = PLYMOUTH FWD		EGA = ENGINE - 3.3L V6	
			SMPI	
			EGH = ENGINE - 3.8L V6	
			SMPI	
			EGM = ENGINE - 3.3L V6	
			SMPI FFV	

AR = use ase required - = Non illustrated part

Cables, Parking Brake
Figure 4-147



ITEM	PART NUMBER	QTY	LINE	SERIES	BODY	ENGINE	TRANS	TRIM	DESCRIPTION
1	04683285	1							CABLE, Parking Brake, Front Parking Brake
2	04683286AB	1							CABLE, Parking Brake, Intermediate
3	04683286AB	1							CUSHION, Intermediate Cable, [Service in Item 2], (NOT SERVICED)
4	04683298	1	H, K, Y		52				CABLE, Parking Brake (Drum), Right
	04683299	1	H, K, Y		52				(Drum), Left
	04683300	1	H, K, Y		53				(Drum), Right
	04683301	1	H, K, Y		53				(Drum), Left
	04721026	1	C, D, P		53				(Disc), Right
	04721027AC	1	C, D, P		53				(Disc), Left
5	04683496AB	2							BRACKET, Parking Brake Cable, Intermediate
6	04683287	1							EQUALIZER, Parking Brake Cable
7	04683287	1							SCREW, Cable Guide .312-18x.750, (NOT SERVICED)
8	04683580	1							GROMMET, Parking Brake Cable, Front Cable
9	04683581	1							GROMMET, Parking Brake Cable, Rear Cable
10	04683581	1							CONNECTOR, Intermediate to Rear, [Service in Item 2], (NOT SERVICED)

CARAVAN, VOYAGER, TOWN AND COUNTRY (NS)

SERIES	LINE	BODY	ENGINE	TRANSMISSION
L = Base	C = CHRYSLER AWD	52 = 113.3 SWB	E98 = ELECTRIC MOTOR	DAC = SINGLE SPEED
H = LX, depor, SE	Y = CHRYSLER FWD	53 = 119.3 LWB	EDZ = ENGINE - 2.4L 4 CYL	DGC = TRANSMISSION - 3-SPEED
P = LXI, LE	D = DODGE AWD		DOHC 16V SMPI	AUTOMATIC
S = Limited	K = DODGE FWD		EFA = ENGINE - 3.0L V6	DGL = TRANSMISSION - 4-SPD.
X = ES	P = PLYMOUTH AWD		SMPI	AUTOMATIC,41TE
	H = PLYMOUTH FWD		EGA = ENGINE - 3.3L V6	
			SMPI	
			EGH = ENGINE - 3.8L V6	
			SMPI	
			EGM = ENGINE - 3.3L V6	
			SMPI FFV	

AR = use ase required - = Non illustrated part

Group - 5

Service Brakes

Group - 5 Service Brakes

Illustration Title

Group-Fig. No.

Front Brakes

Brakes, Front Fig. 5 - 110

Rear Brakes

Brakes, Rear Drum Fig. 5 - 232

Brakes, Rear Disc Fig. 5 - 240

Power Brake Booster

Booster, Power Brake Fig. 5 - 343

Brake Master Cylinder

Master Cylinder Fig. 5 - 416

Anti-Lock Brake Control Fig. 5 - 431

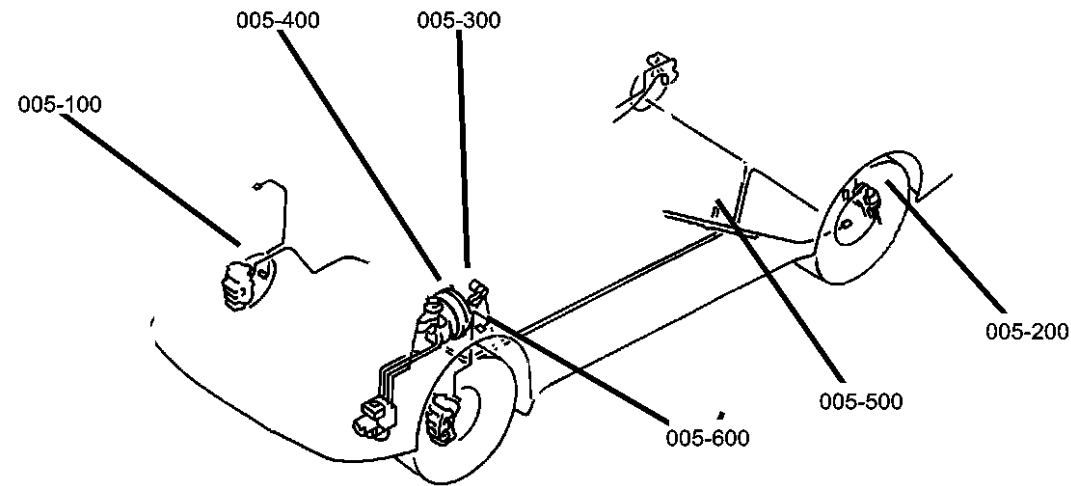
Brake Lines and Hoses

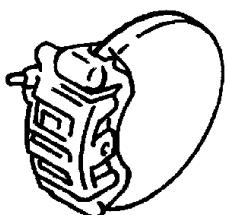
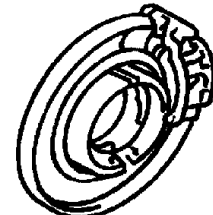
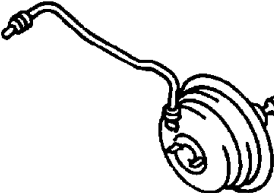
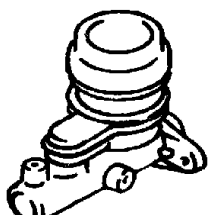
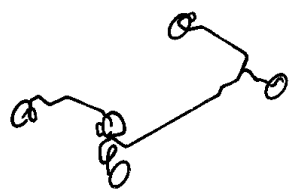

Lines and Hoses, Brake (1 of 2) Fig. 5 - 561

Lines and Hoses, Brake (2 of 2) Fig. 5 - 565

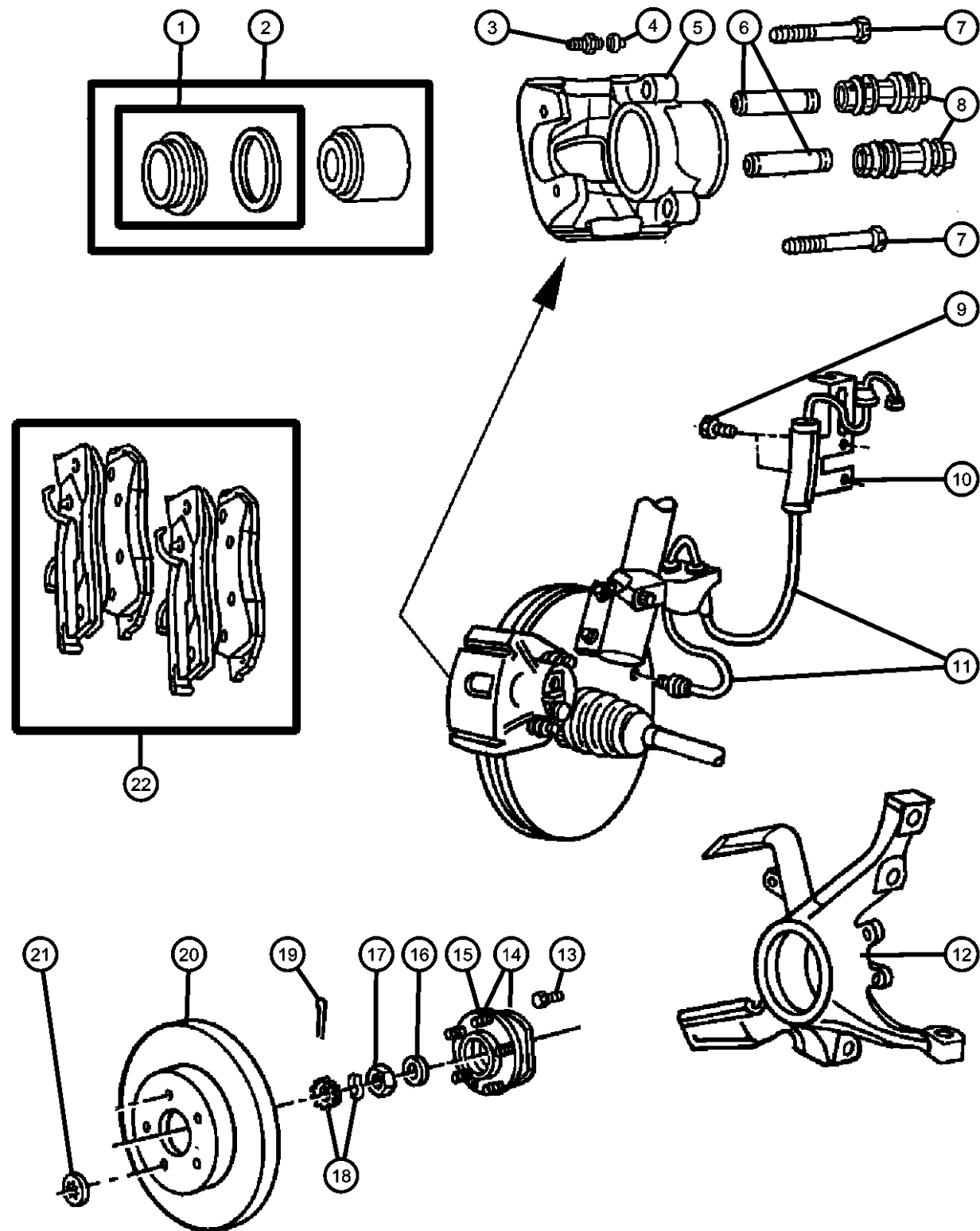
Brake Pedals

Pedal, Brake Fig. 5 - 645



<p>005-100 Front Brakes</p> 	<p>005-200 Rear Brakes</p> 	<p>005-300 Power Brake Booster</p> 	<p>005-400 Brake Master Cylinder</p> 
<p>005-500 Brake Lines and Hoses</p> 	<p>005-600 Brake Pedals</p> 		

Brakes,Front
Figure 5-110



ITEM	PART NUMBER	QTY	LINE	SERIES	BODY	ENGINE	TRANS	TRIM	DESCRIPTION
------	-------------	-----	------	--------	------	--------	-------	------	-------------

Note:Sales Codes:
 [BRA]=Brakes - Power Front Disc/Rear Drum
 [BRB]=Brakes - Power Front Disc/Rear Drum
 [BRE]=Brakes - 4-Wheel Disc Brakes
 [BRV]=Brakes - Power Front Disc/Rear Drum

1	04364781	1							BOOT AND SEAL, Disc Brake
2	05086166AA	1							PISTON PACKAGE, Disc Brake
3	03780788	1							SCREW, Bleeder
4	04238717	1							CAP, Bleeder
5									CALIPER, Disc Brake
	05010032AA	1							Includes 2,3,4,6,8, Right
	05010033AA	1							Includes 2,3,4,6,8, Left
6	04423573	2							SLEEVE, Disc Brake Caliper
7	06502527	4							BOLT, Hex Flange Head, M8-1.25x68.50, Disc Brake Caliper, Mounting
8	04383471	2							BUSHING, Disc Brake Caliper
9	06505344AA	4							SCREW, Hex Flange Head Tapping, M6.3 x 1.81 x 20.00, ABS Sensor, Mounting
10									BRACKET, Brake Sensor
	04797646	1							Right
	04797647	1							Left
11									SENSOR, Anti-Lock Brakes
	04683470	1							Right
	04683471	1							Left
12	04683471	1							KNUCKLE, Front, See Group 2, (NOT SERVICED)
13	06101056	4							SCREW AND WASHER, Hex Head, M10x1.5x50, Hub and Bearing to Knuckle, Mounting
14									HUB AND BEARING, Brake
	04641516	1							[BRA]
	04641517	1							[BRB,BRE,BRV]
	V2501517AA								Mopar V-Line Alternative Part

CARAVAN, VOYAGER, TOWN AND COUNTRY (NS)

SERIES	LINE	BODY	ENGINE	TRANSMISSION
L = Base	C = CHRYSLER AWD	52 = 113.3 SWB	E98 = ELECTRIC MOTOR	DAC = SINGLE SPEED
H = LX, depor, SE	Y = CHRYSLER FWD	53 = 119.3 LWB	EDZ = ENGINE - 2.4L 4 CYL DOHC 16V SMPI	DGC = TRANSMISSION - 3-SPEED AUTOMATIC
P = LXI, LE	D = DODGE AWD		EFA = ENGINE - 3.0L V6 SMPI	DGL = TRANSMISSION - 4-SPD. AUTOMATIC,41TE
S = Limited	K = DODGE FWD		EGA = ENGINE - 3.3L V6 SMPI	
X = ES	P = PLYMOUTH AWD		EGH = ENGINE - 3.8L V6 SMPI	
	H = PLYMOUTH FWD		EGM = ENGINE - 3.3L V6 SMPI FFV	

AR = use ase required - = Non illustrated part