

Chevrolet Camaro 1993-2002 Parts & Diagrams Manual

Full download: <http://manualplace.com/download/chevrolet-camaro-1993-2002-parts-diagrams-manual/>



This is the cut pages sample. Download all 1395 page(s) at: ManualPlace.com



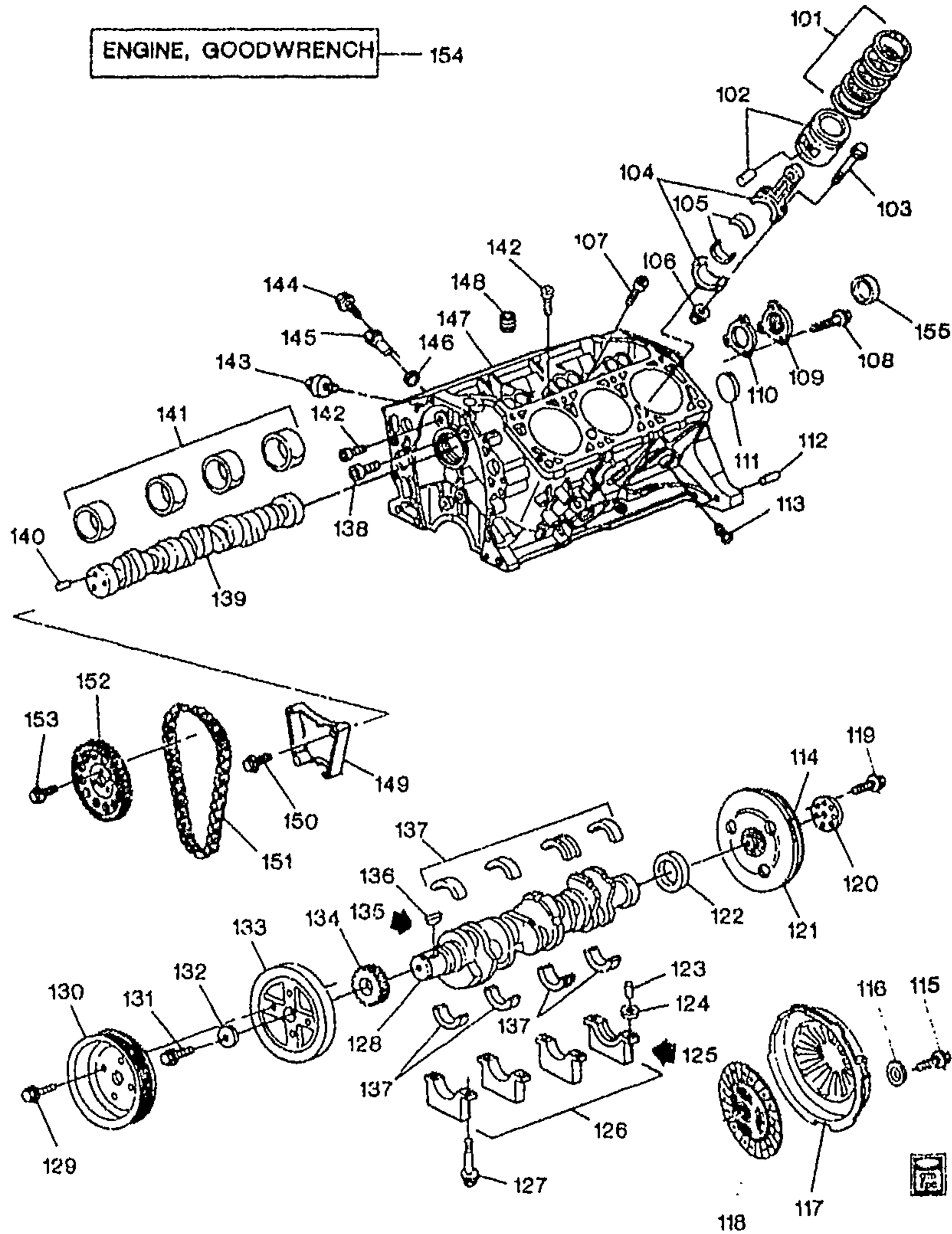
CHEVROLET

CHASSIS GROUP 0.000



ILLUSTRATION INDEX

TITLE	GRID
1993-1995 F ENGINE ASM-3.4L V6 PART 1 CYLINDER BLOCK & INTERNAL PARTS (L32/3.4S)	1-F7
1993-1995 F ENGINE ASM-3.4L V6 PART 2 CYLINDER HEAD & RELATED PARTS (L32/3.4S)	1-F11
1993-1995 F ENGINE ASM-3.4L V6 PART 3 FRONT COVER & COOLING (L32/3.4S)	1-F15
1993-1995 F ENGINE ASM-3.4L V6 PART 4 OIL PUMP, PAN & RELATED PARTS (L32/3.4S)	1-F17
1993-1995 F ENGINE ASM-3.4L V6 PART 5 MANIFOLDS & FUEL RELATED PARTS (L32/3.4S)	1-F21
1995-1997 F ENGINE ASM-3.8L V6 PART 3 FRONT COVER AND COOLING (L36/3.8K)	1-G2
1995-1998 F ENGINE ASM-3.8L V6 PART 5 MANIFOLDS & FUEL RELATED PARTS (L36/3.8K)	1-G5
1995-2002 F ENGINE ASM-3.8L V6 PART 1 CYLINDER BLOCK AND RELATED PARTS (L36/3.8K)	1-G10
1995-2002 F ENGINE ASM-3.8L V6 PART 2 CYLINDER HEAD AND RELATED PARTS (L36/3.8K)	1-G16
1995-2002 F ENGINE ASM-3.8L V6 PART 4 OIL PUMP,PAN AND RELATED PARTS (L36/3.8K)	1-G20
1998-2002 F ENGINE ASM-3.8L V6 PART 3 FRONT COVER AND COOLING (L36/3.8K)	1-G23
1999 F ENGINE ASM-3.8L V6 PART 5 MANIFOLDS & FUEL RELATED PARTS (L36/3.8K)	1-H2
2000-2002 F ENGINE ASM-3.8L V6 PART 5 MANIFOLDS & FUEL RELATED PARTS (L36/3.8K)	1-H7
1993-1995 F ENGINE & TRANSMISSION MOUNTING-V6 (L32/3.4S)	1-H13
1995-1997 F ENGINE & TRANSMISSION MOUNTING-V6 (L36/3.8K)	1-H14
1998-2002 F ENGINE & TRANSMISSION MOUNTING-V6 (L36/3.8K)	1-H16
1993 F COVER/TRANSMISSION CONVERTER (MD8)	1-H18
1994-1995 F COVER/TRANSMISSION CONVERTER (L32,M30)	1-H19
1994-1997 F COVER/TRANSMISSION CONVERTER (LT1,M30)	1-H19
1995-1997 F COVER/TRANSMISSION CONVERTER (L36,M30)	1-H20
1998-2002 F COVER/TRANSMISSION CONVERTER (L36,M30)	1-H21
1998-2002 F COVER/TRANSMISSION CONVERTER (LS1,M30)	1-H22
1993 F CLUTCH (M28,M29)	1-H23
1993-1995 F CLUTCH (M49)	1-H25
1994-1997 F CLUTCH (MM6)	1-H27
1996-2002 F CLUTCH (L36/3.8K)(M49)	1-I2
1998-2002 F CLUTCH (LS1,MM6)	1-I4
1993 F CLUTCH LINKAGE (M28,M29)	1-I6
1993-1995 F CLUTCH LINKAGE (M49)	1-I8
1994-1997 F CLUTCH LINKAGE (MM6)	1-I11
1996-2002 F CLUTCH LINKAGE (L36,M49)	1-I14
1998-2002 F CLUTCH LINKAGE (LS1,MM6)	1-I18



MF00-049

1993-1995 F ENGINE ASM-3.4L V6 PART 1 CYLINDER BLOCK & INTERNAL PARTS (L32/3.4S)

101.	1-E21	0.643	RING KIT, PSTN (STD)	93-95 F (L32)	6	12520260
	1-E21	0.643	RING KIT, PSTN (0.5MM O.S.) ...	93-95 F (L32)	6	12520261
	1-E21	0.643	RING KIT, PSTN (1.0MM OS)	93-95 F (L32)	6	12520262
102.	1-E21	0.629	PISTON, (W/PIN) (STD)	93-95 F (L32)	6	10146858
	1-E21	0.629	PISTON, (W/PIN) (0.5MM O.S.) ..	93-95 F (L32)	6	14097653
	1-E21	0.629	PISTON, (W/PIN) (1.0MM O.S.) ..	93-95 F (L32)	6	14097654

103.	1-E20	0.623	BOLT, CONN ROD (ALSO PART OF 104) (M9X1X55.5, 13 THD, STL)	93-95	F (L32)	12	466337
104.	1-E20	0.603	ROD, CONN (INCL 103, 106)	93-95	F (L32)	6	10192567
105.	1-E20	0.616	BEARING KIT, CONN ROD (STD)	93-95	F (L32)	6	12480255
	1-E20	0.616	BEARING KIT, CONN ROD (.026MM U.S.)	93	F (L32)	6	12537647
106.	1-E21	0.626	NUT, CONN ROD (ALSO PART OF 104) (M9X1X9)	93-95	F (L32)	12	361970
107.		8.971	PLUG, 1/8 NPTF (ENG BLK OIL GAL) (AC-DELCO #444613)	93-95	1	444613
108.		8.977	BOLT, M6X1X13, 10 THD, 12.5 OD (CM/SHF RR CVR (SEE ITEM #155 WHEN SERVICED BY FLUG, CM/SHF RR BRG HOLE) ..	93-94	3	11509699
109.	1-E20	0.553	COVER, CM/SHF RR (SEE ITEM# 155 WHEN SERVICED BY PLUG, CM/SHF RR BRG HOLE) ..	93-94	F (L32)	1	476544
110.	1-E20	0.553	GASKET, CM/SHF RR CVR (SEE ITEM# 155 WHEN SERVICED BY PLUG, CM/SHF RR BRG HOLE) ..	93-94	F (L32)	1	10065415
111.	1-E14	0.034	PLUG, ENG BLK CORE HOLE (CUP DIA 34.3MM)	93-95	F (L32)	6	360571
112.	1-E23	0.685	PIN, TRANS LOC (19.5 MM X 18.5 MM)	93	F (L32, MD8)	2	12338076
	1-E23	0.685	PIN, TRANS LOC (19.5 MM X 18.5 MM)	93-95	F (L32, M49)	2	12338076
	1-E23	0.685	PIN, TRANS LOC (19.5 MM X 18.5 MM)	94-95	F (L32, M30)	2	12338076
113.		8.971	PLUG; USED W/ 12346004 SEALER; 1/4-18 NPTF DRY SEAL (ENG BLK COOL DRN HOLE) (AC-DELCO #3889330) .	93-95	1	3889330
114.	1-E22	0.673	GEAR, FLYWHL RING (ALSO PART OF 121)	93-95	F (L32)	1	14033090
115.	1-E26	0.862	BOLT, CLU PRESS PLT (M8X1.25X21.6, 19.8+HD, 10.9, PC) (8.900)	93-95	F (L32, M49)	6	24571667
116.		8.931	WASHER-HSL .32RX .58X .088 ZO (CLU PRESS PLT)	93-95	6	9439511
117.	1-E25	0.859	PLATE, CLU PRESS (W/CVR) ...	94-95	F (L32, M49)	1	10235003
	1-E25	0.859	PLATE, CLU PRESS (W/CVR) (IF USE IN PLC OF 10206758, 10235002 DRVN PLT MUST ALSO BE USED)	93	F (L32, M49)	1	10235003
118.	1-E26	0.886	PLATE, CLU DRVN	94-95	F (L32, M49)	1	10235002
	1-E26	0.886	PLATE, CLU DRVN (IF USE IN PLC OF 10206756, 10235003 CLU PRESS PLT MUST ALSO BE USED)	93	F (L32, M49)	1	10235002
119.	1-E22	0.669	BOLT, FLYWHL (HEX, M10X1X23, 15.5 THD, 11.9, PC)	93-95	F (L32, M49)	6	476576
	1-E22	0.669	BOLT, FLYWHL (HEX, M10X1X18.5, 14 THD, 11.9, PC) ..	93	F (L32, MD8)	6	12338144
	1-E22	0.669	BOLT, FLYWHL (HEX, M10X1X18.5, 14 THD, 11.9, PC) ..	94-95	F (L32, M30)	6	12338144
120.	1-E22	0.669	RETAINER, FLYWHL	93	F (L32, MD8)	1	477288
	1-E22	0.669	RETAINER, FLYWHL	94-95	F (L32, M30)	1	477288

121.	1-E22	0.666	FLYWHEEL, ENG (INCL 114)	93	F (L32, MD8)	1	14097667
	1-E22	0.666	FLYWHEEL, ENG (INCL 114)	93-95	F (L32, M49)	1	14100559
	1-E22	0.666	FLYWHEEL, ENG (INCL 114)	94-95	F (L32, M30)	1	14097667
122.	1-E15	0.137	SEAL KIT, CR/SHF RR OIL (11MM THK) (INCLS INST SHEET & SEALS)	93-95	F (L32)	1	14085829
123.		8.939	PIN, M6X16 STL PL (CR/SHF RR MAIN BRG CAP LOC)	93-95	1	11503504
124.	1-E15	0.137	SEAL, CR/SHF RR MAIN BRG CAP	93-95	F (L32)	1	10191767
125.		8.800	SEALANT-LOCTITE PIPE-W/TEFLON 50CC TUBE (CR SHF RR MAIN BRG CAP)	93-95	AR	12346004
126.		N.S.	CAP, CR/SHF BRG (CSTG)		
127.	1-E14	0.056	BOLT, CR/SHF BRG CAP (M11X1.5X93)	93-95	F (L32)	8	476543
128.	1-E21	0.646	CRANKSHAFT,	93-95	F (L32)	1	10146889
129.		8.900	BOLT, HFH M10X1.5X20 9.8 PZOR (CR/SHF PUL)	93-95	1	11508202
130.	1-E21	0.659	PULLEY, CR/SHF	93-95	F (L32)	1	14100594
131.	1-E22	0.662	BOLT, CR/SHF BALR	93-95	F (L32)	1	14102649
132.		8.929	WASHER, SPECIAL 12.4X44.5X8.0 THK PC (CR/SHF BAL)	93-95	1	14001829
133.	1-E21	0.659	DAMPENER, CR/SHF TORSIONAL	93-95	F (L32)	1	10146863
134.	1-E23	0.728	SPROCKET, CR/SHF	93-95	F (L32)	1	477263
135.		8.800	SEALANT, RTV SILICONE RUBR (3.35 OZ TUBE) (CR/SHF BAL KEYWAY)	93-95	AR	12345739
136.	1-E22	0.662	KEY, CR/SHF BALR (LGTH-36.7MM, WIDTH-4.77MM) (8.960)	93-95	F (L32)	1	14089209
137.	1-E15	0.096	BEARING KIT, CR/SHF (#1, #4 STD)	93-95	F (L32)	2	12480252
	1-E15	0.096	BEARING KIT, CR/SHF (#2 STD) (INCLS 2 NON-FLANGED BRGS)	93-95	F (L32)	1	12480253
	1-E15	0.096	BEARING KIT, CR/SHF (#3 STD) (INCLS 1 FLANGE & 1 REGULAR BRG)	93-95	F (L32, M30)	1	12480254
	1-E15	0.096	BEARING KIT, CR/SHF (POS #3, STD) (INCLS 2 NON-FLANGED BRGS)	93-94	F (L32, M27)	1	12480253
	1-E15	0.096	BEARING KIT, CR/SHF (POS #3, STD) (CONTAINS 2 FLANGED BRGS)	93-94	F (L32, M27)	1	12537077
	1-E15	0.096	BEARING KIT, CR/SHF (POS #3, STD) (INCLS 2 NON-FLANGED BRGS)	94-95	F (L32, M49)	1	12480253
	1-E15	0.096	BEARING KIT, CR/SHF (POS #3, STD) (CONTAINS 2 FLANGED BRGS)	94-95	F (L32, M49)	1	12537077
138.	1-L28	1.531	PLUG, ENG BLK OIL GAL (AUTO DRAIN, INT SQ, 3/8-18X.42 PEOR STL) (8.971)	93-95	F (L32)	2	14080911
139.	1-E20	0.519	CAMSHAFT, ENG (INCL 140)	93-95	F (L32)	1	10166324

140.		8.939	PIN, M6X16 STL PL (ALSO PART OF 139) (CM/SHF SPKT LOC) ...	93-95		1	11503504
141.	1-E20	0.539	BEARING, CM/SHF (#1) ...	93-95	F (L32)	1	12507945
	1-E20	0.539	BEARING, CM/SHF (#2, 3) ...	93-95	F (L32)	2	12507946
	1-E20	0.539	BEARING, CM/SHF (#4) ...	93-95	F (L32)	1	12507947
142.	1-L28	1.531	PLUG, ENG BLK OIL GAL (INT SOC, 1/4-18 THD, .41, W/THD SEALER) (8.970) ...	93-95	F (L32)	4	14102589
	1-L28	1.531	PLUG, ENG BLK OIL GAL (CTR TOP) (HEX SOC 1/8-27, 1/8 HEADLESS, STL) (3.665) (AC-DELCO #10040001) ...	93	F (L32)	2	10040001
143.	1-M12	2.383	SENSOR, KNOCK (AC-DELCO #213-266) ...	93-95	F (L32)	1	10456207
144.	1-M12	2.383	BOLT, CR/SHF POSN SEN (M6X1X20, 19THD, 14.2OD) (8.900) (AC-DELCO #11517518)	93-95	F (L32)	1	11517518
145.	1-M12	2.383	SENSOR, CR/SHF POSN (INCL 146) (7X IGN TIMING) (AC-DELCO #213-150) ...	93-95	F (L32)	1	10456108
146.	1-M12	2.383	SEAL, CR/SHF POSN SEN (O RING) (ALSO PART OF 145) (2.170) (AC-DELCO #1989866)	93-95	F (L32)	1	1989866
147.		N.S.	BLOCK, ENG (SERVICED BY GOODWRENCH ENGINE) ...				
148.		8.971	PLUG, SQ SOCKET, 1/4-18 NPTF, .46 THD, PL, W/SEALER (ENG OIL PRESS GA SEN OR IND SW HOLE) ...	93-95		1	14081701
149.	1-E23	0.724	DAMPENER, TMG CHAIN ...	93	F (L32)	1	477264
	1-E23	0.724	DAMPENER, TMG CHAIN ...	94-95	F (L32)	1	10189283
150.		8.900	BOLT-HEX, M8X1.25X21.5, 17 OD, 18.5 THD, GM500-M (9.81), GM6173, MACH (TMG CHAIN DPNR) (AC-DELCO #8656392)	93-95		2	8656392
151.	1-E23	0.724	CHAIN, CM/SHF TMG ...	93-95	F (L32)	1	14102670
152.	1-E23	0.736	SPROCKET, CM/SHF ...	93-95	F (L32)	1	14025558
153.	1-E24	0.738	BOLT, CM/SHF SPKT (HEX HD M8X1.25X23) ...	93-95	F (L32)	3	477280
154.	1-E12	0.000 A	ENGINE, GASOLINE (GOODWRENCH) (NEW) (REFER TO NOTE #10 ION CATLG TEXT)	93-95	F (L32)	1	12537104
155.	1-E20	0.553	PLUG, CM/SHF RR BRG HOLE (SEE ITEMS 108, 109, 110 WHEN SERVICED BY COVER, CM/SHF RR) (8.970) ...	94-95	F (L32)	1	10241154

RPO DEFINITIONS

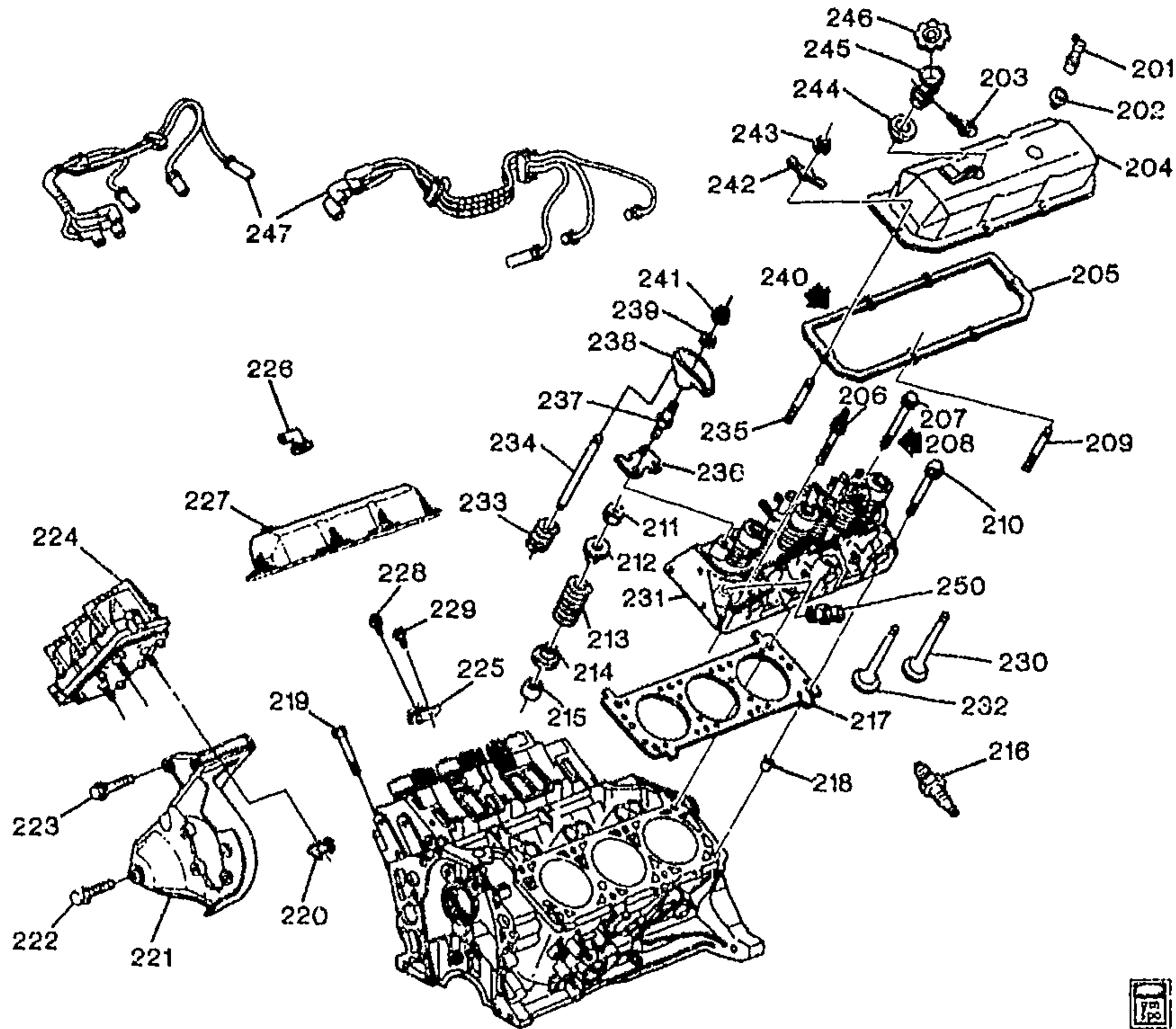
L32 - ENGINE, 3.4L, V6, (3.4S), SFI, OHV

MD8 - TRANSMISSION, AUTOMATIC 4 - SPEED (THM700R4/4L60)

M27 - TRANSMISSION, MANUAL 5 - SPEED

M30 - TRANSMISSION, AUTOMATIC 4 SPEED, 4L60E, ELECTRONIC

M49 - TRANSMISSION MAN 5 SPD, BORG WARNER, 77MM, 3.75 1ST, .76 5TH, O/D



MF00-050

1993-1995 F ENGINE ASM-3.4L V6 PART 2 CYLINDER HEAD & RELATED PARTS (L32/3.4S)

201.	1-M4	1.745	VALVE, PCV (AC-DELCO #CV789C)	93-95 F (L32)	1	8995284
202.	1-M4	1.745	GROMMET, PCV VLV	93-95 F (L32)	1	14091870
203.		8.977	SCREW, HWH TAP M6.3X1.81X13 13 OD PZOR (OIL FIL TUBE SUPT)	93-95	1	12336139
204.	1-E18	0.386	COVER, VLV RKR ARM	93-95 F (L32)	LH	10191718
205.	1-E19	0.423	GASKET, VLV RKR ARM CVR (*KIT1)	93-95 F (L32)	2	10048606
206.	1-E17	0.293	STUD, CYL HD (USE 09985490 SEALER)	93-95 F (L32)	1	14097629
207.	1-E17	0.293	BOLT, CYL HD (M11X1.5X93) (0.056)	93-95 F (L32)	8	476543
208.		8.800	SEALANT-LOCTITE PIPE-W/TEFLON 50CC TUBE ...	93-95	AR	12346004
209.	1-E13	0.413	STUD, VLV RKR ARM CVR (M6X1X13/M6X1X21.5, TL 40.5, TORX DR, DOG PT) (M6X1X13/M6X1X21.5)	93-95 F (L32)	11	14092906

210.	1-E17	0.293	BOLT, CYL HD (M11X1.5X68).....	93-95	F (L32)	8	476572
211.	1-E18	0.310	KEY, VLV STEM	93-95	F (L32)	24	24503856
212.	1-E18	0.309	CAP, VLV SPR	93-95	F (L32)	12	14004099
213.	1-E17	0.303	SPRING, VLV (W/DAMPER)	93-95	F (L32)	12	10207475
214.	1-E18	0.308	SHIELD, VLV STEM OIL	93-95	F (L32)	6	10048657
215.	1-E18	0.308	SEAL, VLV STEM OIL (O-RING TYPE) (*KIT1)	93-95	F (L32)	12	10214034
	1-E18	0.308	SEAL, INT VLV STEM OIL (STD AND .003 O.S.) (W/RET) (*KIT1) .	93-95	F (L32)	6	460483
	1-E18	0.308	SEAL, INT VLV STEM OIL (W/RET) (.015 O.S.) (*KIT1)	93-94	F (L32)	6	14037715
	1-E18	0.308	SEAL, INT VLV STEM OIL (W/RET) (.030 O.S.) (*KIT1)	93-94	F (L32)	6	14037716
216.	1-M11	2.270	SPARK PLUG, (AC-DELCO #R43TSK)	93-95	F (L32)	6	5614168
	1-M11	2.270	SPARK PLUG, (AC-DELCO #41-803)	93-95	FP (L32)	1	88901009
217.	1-E16	0.289	GASKET, CYL HD (*KIT1)	93-95	F (L32)	2	10219641
218.	1-E17	0.293	PIN, CYL HD LOC (DOWEL) (SPLIT, 15X12.5, CHAM, STL)	93-95	F (L32)	4	14024244
219.	1-E17	0.293	BOLT, CYL HD (M11X1.5X71)	93-95	F (L32)	1	10065500
220.		8.917	NUT, HEX FLGD PREV TORQ M6X1 9 CAD (ELEK ICM)	93	F (L32)	3	11503750
		8.917	NUT, HFH 6X1X7 SELF LK 14.2-OD (9) 7111M ALL MET PREV TORQ (ELEK ICM)	94-95	F (L32)	3	11516075
221.	1-M7	2.183	BRACKET, IGN COIL & P/S PUMP (SEE "STEERING PUMP MOUNTING" ILLUSTRATION IN GROUP 6.000 FOR DETAILED VIEW.)	93-95	F (L32)	1	10115882
	1-N27	6.606	BRACKET, IGN COIL & P/S PUMP (SEE "STEERING PUMP MOUNTING" ILLUSTRATION IN GROUP 6.000 FOR DETAILED VIEW.) (2.183)	93-95	F (L32)	1	10115882
222.		8.900	BOLT, HFH, M10X1.5X40, 26 THD, 10.9, POR (IGN COIL & P/S PUMP BRKT)	93-95		3	14050422
223.		8.900	BOLT, HFH, M10X1.5X40, 26 THD, 10.9, POR (IGN COIL & P/S PUMP BRKT)	93-95		3	14050422
224.	1-M12	2.383	MODULE, ELEK IGN CONT (W/O COIL) (SEE "COIL & MODULE/IGNITION" ILLUSTRATION IN GRP. 2.000 FOR DETAILED VIEW.) (ON ENGINE) (INCLS SEALS) (AC-DELCO #D1998A)	93-95	F (L32)	1	10489422
225.	1-M11	2.277	SUPPORT, GEN RR (LOWER) ...	93-95	F (L32)	1	10244472
226.	1-M4	1.745	GROMMET, PCV TUBE (15/32I.D. X 25/32O.D)	93-95	F (L32)	1	14078872
227.	1-E18	0.386	COVER, VLV RKR ARM	93-95	F (L32)	RH	10154738
228.	1-M11	2.277	BOLT, GEN SUPT BR	93-95	F (L32)	1	14097631
229.		8.900	BOLT, HFH M10X1.5X20 9.8 PZOR (GEN BR)	93-95		1	11508202
230.	1-E17	0.296	VALVE, INT (.089MM O.S.)	93-95	F (L32)	6	14031394

						MF00-050
	1-E17	0.296	VALVE, INT (.394MM O.S.)	93-95	F (L32)	6 14031395
	1-E17	0.296	VALVE, INT (.775MM O.S.)	93-95	F (L32)	6 14031396
	1-E17	0.296	VALVE, INT (STD)	93-95	F (L32)	6 14031328
231.	1-E16	0.269	HEAD, CYL	93-95	F (L32)	2 14054084
232.	1-E17	0.297	VALVE, EXH (STD)	93-95	F (L32)	6 14031332
	1-E17	0.297	VALVE, EXH (.089MM O.S.)	93-95	F (L32)	6 14031397
	1-E17	0.297	VALVE, EXH (.394MM O.S.)	93-95	F (L32)	6 14031398
	1-E17	0.297	VALVE, EXH (.775MM O.S.)	93-95	F (L32)	6 14031399
233.	1-E19	0.459	LIFTER, VLV (HYD) (.010" O.S.)	93-95	F (L32)	12 5234390
			(AC-DELCO #HL111)			
	1-E19	0.459	LIFTER, VLV (HYD) (STD)	93-95	F (L32)	12 5234212
			(AC-DELCO #HL81A)			
234.	1-E19	0.426	ROD, VLV PUSH (INCLS	93-95	F (L32)	12 476525
			INSERTS)			
235.	1-E18	0.413	STUD, VLV RKR ARM CVR	93-95	F (L32)	1 14091881
			(M6X1X9/M6X1X10.5, 35 NECK			
			TO TORX DR)			
236.	1-E19	0.439	GUIDE, VLV LFTR PUSH ROD	93-95	F (L32)	6 476531
237.	1-E19	0.429	STUD, VLV RKR ARM BALL	93-95	F (L32)	12 476530
			(M10X1.5X9.9/M10X1X18)			
			(M10X1.5X9.9/M10X1X18)			
238.	1-E18	0.333	ARM KIT, VLV RKR (W/BALL)	93-95	F (L32)	12 14002446
			(INCL 239, 241) (INCLS ARM,			
			BALL & NUT)			
239.		N.S.	BALL, VLV RKR ARM (PART OF			
			238)			
240.		8.800	SEALANT, RTV SILICONE RUBR	93-95		AR 12345739
			(3.35 OZ TUBE) (VLV RKR ARM			
			CVR)			
241.	1-E19	0.429	NUT, VLV RKR ARM (ALSO PART	93-95	F (L32)	12 477212
			OF 238) (HEX PREV TORQ, ALL			
			MET, 10X1.0X11.2, 301M, CD)			
242.	1-E18	0.413	REINFORCEMENT, VLV RKR	93-95	F (L32)	12 14090536
			ARM CVR			
243.		8.917	NUT, HFH M6X1X6.5 ZOR 9 (VLV	93-95		12 3530297
			RKR ARM CVR)			
244.	1-M4	1.745	GROMMET, OIL FIL TUBE	93-95	F (L32)	1 10108402
			(ID-24.13, OD-45.04, FITS			
			HOLE-30.6, WIDTH-21.8 (MM))			
245.	1-M4	1.745	TUBE, OIL FIL	93-95	F (L32)	1 10154740
246.	1-M4	1.758	CAP, OIL FIL (AC-DELCO	93-95	F (L32)	1 10229164
			#FC169)			
247.	1-M8	2.239	WIRE KIT, SPLG (AC-DELCO	93-95	F (L32)	1 12096409
			#726C)			
	1-M8	2.240	WIRE, SPLG #1 CYL (28" STYLE	93-95	F (L32)	1 12072150
			DD) (AC-DELCO #324J)			
	1-M8	2.240	WIRE, SPLG #2 CYL (18" STYLE	93-95	F (L32)	1 12073902
			DD) (AC-DELCO #327C)			
	1-M8	2.240	WIRE, SPLG #2 CYL (STYLE	93-95	F (L32)	1 12072150
			DD-L, 28" LG) (AC-DELCO			
			#324J)			
	1-M8	2.240	WIRE, SPLG #3 CYL (32" STYLE	93-95	F (L32)	1 12073908
			EE) (AC-DELCO #327J)			
	1-M8	2.240	WIRE, SPLG #4 CYL (20" LG,	93-95	F (L32)	1 12073903
			STYLE RR) (AC-DELCO #327D)			
	1-M8	2.240	WIRE, SPLG #5 CYL (36" LG,	93-95	F (L32)	1 12073908
			STYLE EE) (AC-DELCO #327K)			

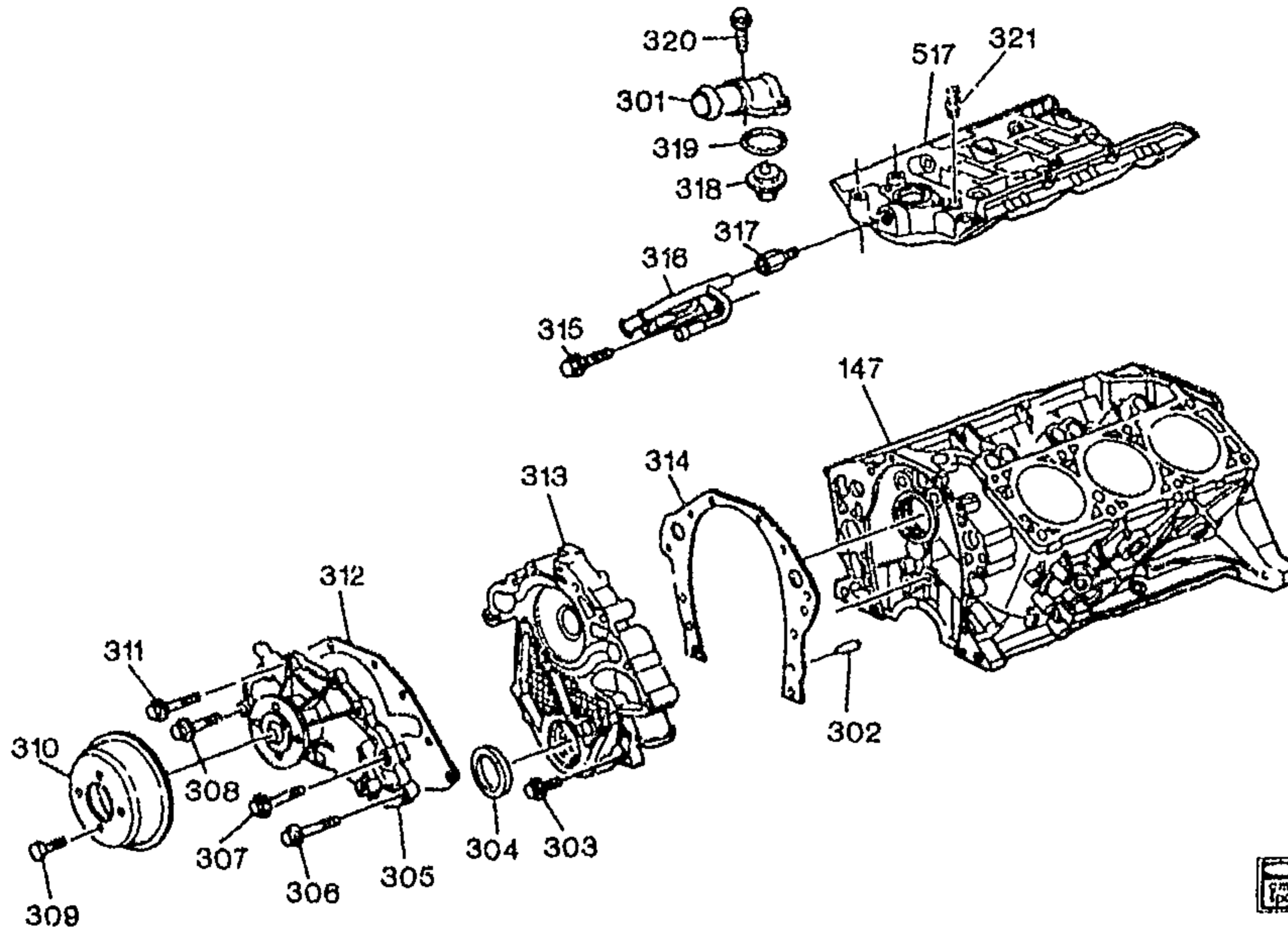
					MF00-050
	1-M8	2.240	WIRE, SPLG #6 CYL (22" LG, STYLE RR) (AC-DELCO #327E)	93-95 F (L32)	1 12073904
250.	1-L24	1.150	SENSOR, ENG COOL T/GA (AT CYLINDER HEAD FOR TEMP GAUGE) (USE W/LOCTITE 503, 504, 517 ON SECOND TO SIXTH THREAD ONLY) (3/8-18 THD) (2 TERM, CAN BE USED AS 1 TERM CONN) (AC-DELCO #213-77)	93-95 F (L32)	1 25037332

SERVICE KITS

1.	1-E16	0.289	GASKET KIT, CYL HD (INCL 205, 215, 217) (KIT ALSO INCLUDES GASKETS AND SEALS FOR MANIFOLDS, GASKETS, EGR VLV PIPE AND ENG COOL THERMOSTAT)	93-95 F (L32)	1 12520757
----	-------	-------	--	---------------------	------------

RPO DEFINITIONS

L32 - ENGINE,3.4L,V6,(3.4S),SFI,OHV



MF00-051

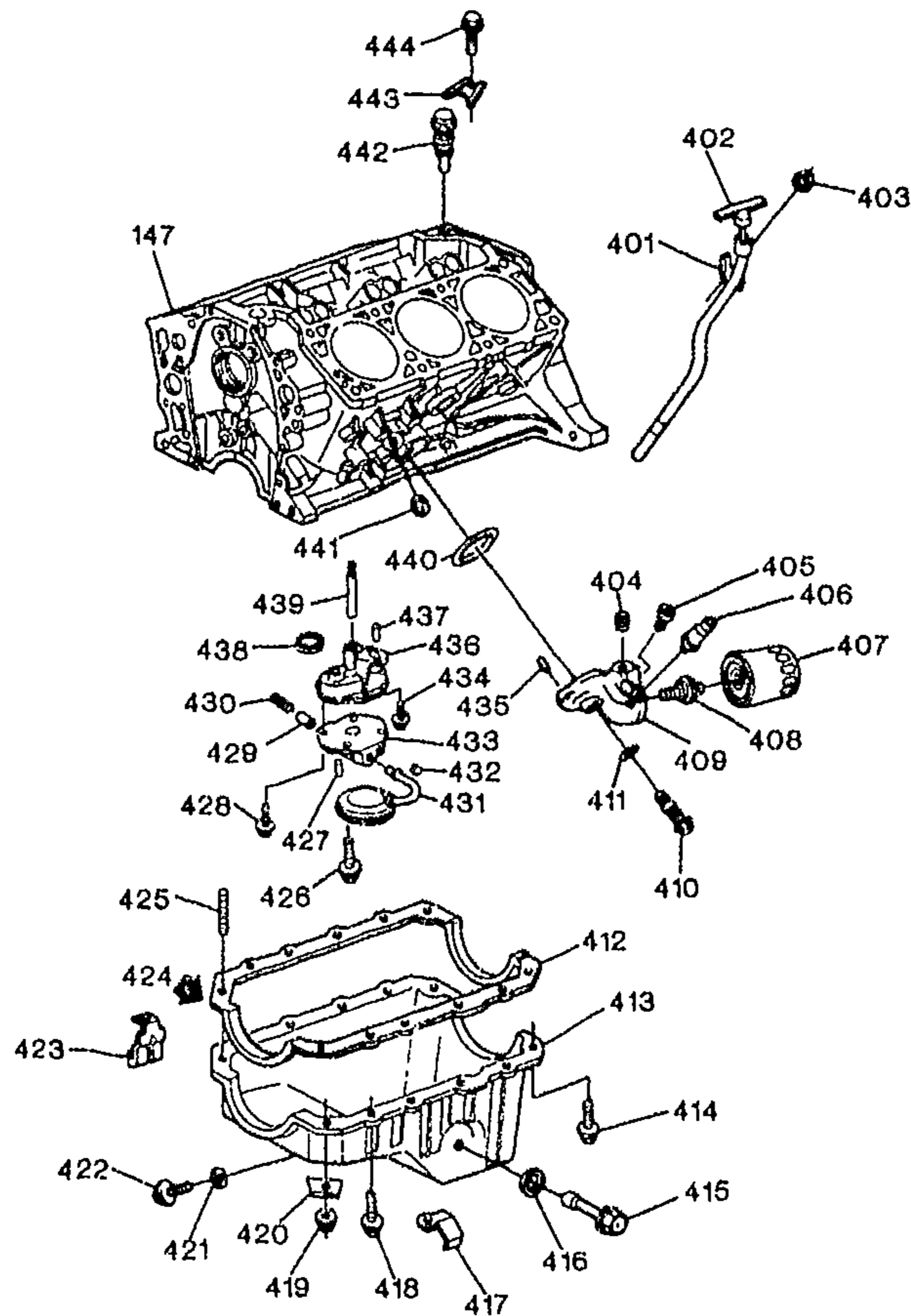
1993-1995 F ENGINE ASM-3.4L V6 PART 3 FRONT COVER & COOLING (L32/3.4S)

147.	N.S.		BLOCK, ENG (SERVICED BY GOODWRENCH ENGINE)			
301.	1-L25	1.153	OUTLET, WAT (AC-DELCO #15-1584)	93-95	F (L32)	1 10151656
302.		8.939	PIN, M6X16 STL PL (ENG FRT CVR LOC)	93-95	1 11503504
303.		8.900	BOLT, HFH M8X1.25X35 10.9 PZOR (ENG FRT CVR) (0.206) ...	93-95	3 24572579
304.	1-E16	0.213	SEAL, CR/SHF FRT OIL (TMG GR CVR) (ALSO PART OF 313) (61.42/61.32 MM O.D.)	93-95	F (L32)	1 10243247
305.	1-L23	1.069	PUMP, WAT (INCL 312) (AC-DELCO #251-6i9)	93-95	F (L32)	1 12482692
306.		8.900	BOLT, HFH M8X1.25X35 10.9 PZOR (W/PMP) (0.206)	93-95	3 24572579
307.	1-E15	0.206	BOLT, ENG FRT CVR (M10X1.5X69.5)	93-95	F (L32)	4 10182369
308.	1-L23	1.079	BOLT, W/PMP (HFH, M6X1X24, 14 THD, 13.6 OD, 9.8, PE)	93-95	F (L32)	3 10182370
309.	1-L22	1.062	BOLT, W/PMP PUL (M8X1.25X16 17.6.9.8PZOR) (8.900)	93-95	F (L32)	4 11516186
310.	1-L22	1.062	PULLEY, W/PMP	93-95	F (L32)	1 10166377
311.		8.900	BOLT, HEX FLG HD (M8X1.25X70 10.9 17.6 OD 6174M (ENG FRT CVR)	93-95	16 11509516

						MF00-051
312.	1-L23	1.079	GASKET, W/PMP (ALSO PART OF 305)	93-95	F (L32)	1 10087563
313.	1-E15	0.206	COVER, ENG FRT (INCL 304) ...	93-95	F (L32)	1 10151670
314.	1-E16	0.207	GASKET, ENG FRT CVR	93-95	F (L32)	1 10189276
315.		8.900	BOLT, HFH-M8X1.25X20 (HTR INL PIPE)	93-95	1 11516186
316.	1-N27	8.846	PIPE, HTR INL	93-95	F (L32)	1 10189204
317.	1-N28	8.866	NIPPLE, HTR WAT ENG INL	93-95	F (L32)	1 88891732
318.	1-L25	1.246	THERMOSTAT, ENG COOL (INCL 319) (INCLS SEAL) (AC-DELCO #131-122)	93-95	F (L32)	1 24577299
319.	1-L25	1.252	SEAL, ENG COOL THERM (O RING) (ALSO PART OF 318) (WITH LIP) (46.80MM O.D.) (*KIT1) (AC-DELCO #10226107)	93-95	F (L32)	1 10226107
320.		8.900	BOLT, M8X1.25X25 9.8 (WAT OTLT)	93-95	2 11508476
321.	1-N14	3.682	SENSOR, ENG COOL TEMP (AT INT MANIF ONLY, INTERFACES W/ECM, USED FOR CLUSTERS W/OIL GAGE & LIGHT COMBINATION, GOES W/12101899 CONN) (AT INT MANIFOLD ONLY) (2-WAY M) (AC-DELCO #213-310)	93-95	F (L32)	1 12146312
	1-L24	1.150	SENSOR, ENG COOL TEMP (AT INT MANIF, INTERFACES W/ECM, USED FOR CLUSTERS W/OIL GAGE & LIGHT COMB, GOES W/12101899 CONN) (AT INT MANIFOLD ONLY) (2-WAY M) (3.682) (AC-DELCO #213-310)	93-95	F (L32)	1 12146312
517.	1-M25	3.265	MANIFOLD, LWR INT	93-95	F (L32)	1 10137051
SERVICE KITS						
1.	1-E16	0.289	GASKET KIT, CYL HD (INCL 324) (KIT ALSO INCLUDES GASKETS AND OR SEALS FOR CYLINDER HEAD, INTAKE MANIFOLDS, EGR VALVE PIPE VALVE ROCKER ARM COVER AND INTAKE VALVE STEM OIL)	93-95	F (L32)	1 12520757

RPO DEFINITIONS

L32 - ENGINE,3.4L,V6,(3.4S),SFI,OHV



MF00-052

1993-1995 F ENGINE ASM-3.4L V6 PART 4 OIL PUMP, PAN & RELATED PARTS (L32/3.4S)

147.	N.S.	BLOCK, ENG (SERVICED BY GOODWRENCH ENGINE)			
401.	1-L27	1.516 TUBE, OIL LVL IND	93-95	F (L32)	1 10151690
402.	1-L27	1.516 INDICATOR, OIL LVL	93-95	F (L32)	1 24504405
403.		8.917 NUT, HFH, M8X1.25, 17.9 OD, 738 THK, 13MM HEX, 10, ZF (OIL LVL IND TUBE) (8.915) (AC-DELCO #11514596)	93-95	1 11514596
404.		8.971 PLUG, HEX SOC, .250-18, .69 LNG, PC, DOG PT (ALSO PART OF 409) (OIL FLTR ADAP HOLE) .	93-95	1 12338136
405.	1-M6	1.837 VALVE, OIL FLTR BYPASS (W/CAGE, SEAT, SPRING & VALVE) (AC-DELCO #25014006)	93-95	F (L32)	1 25014006

406.	1-M5	1.800	SENSOR, ENG OIL PRESS GA (3 TERMINALS:A, C, D) (AC-DELCO #D1808A)	93 F (L32)	1	12555492
	1-M5	1.800	SENSOR, ENG OIL PRESS GA (3 TERMINALS:A, C, D) (AC-DELCO #D1808A) (W/O GROUND CONNECTION)	94 F (L32) (1ST DES)	1	12555492
	1-M5	1.800	SENSOR, ENG OIL PRESS GA (W/2 TERM) (W/GROUND CONNECTION)	94 F (L32) (2ND DES)	1	15955710
	1-M5	1.800	SENSOR, ENG OIL PRESS GA (W/2 TERM)	95 F (L32)	1	15955710
407.	1-M6	1.836	FILTER, OIL (AC-DELCO #PF47)	93-95 F (L32)	1	25010792
	1-M6	1.836	FILTER, OIL (AC-DELCO #UPF47)	93-95 F (L32)	1	25322835
	1-M6	1.836	FILTER, OIL (AC-DELCO #SPF47)	93-95 F (L32)	1	25325404
408.	1-M7	1.855	FITTING, OIL FLTR (ALSO PART OF 409)	93-95 F (L32)	1	466383
409.	1-M7	1.840	ADAPTER, OIL FLTR (INCL 404, 408, 435)	93-95 F (L32)	1	10182371
410.	1-M7	1.840	BOLT, OIL FLTR ADAP	93-95 F (L32)	1	12537215
411.	1-M7	1.840	SEAL, OIL FLTR ADAP BOLT (1.844)	93-95 F (L32)	1	14033233
412.	1-L26	1.429	GASKET, OIL PAN	93-95 F (L32)	1	14090535
413.	1-L25	1.426	PAN, OIL (INCL 421, 422)	93-95 F (L32)	1	10115790
414.	1-L26	1.428	BOLT, OIL PAN (USED AT #11, 12 HOLES) (M8X1.25X14)	93-95 F (L32)	2	14077877
415.	1-L27	1.516	SENSOR, ENG OIL LVL (INCL 416)	93-95 F (L32)	1	24507190
416.	1-L27	1.516	SEAL, ENG OIL LVL SEN (ALSO PART OF 415)	93-95 F (L32)	1	10151633
417.	1-M12	2.383	CLIP, CR/SHF POSN SEN WRG HARN (BLACK POLYPROPYLENE) (6MM) (CNVLT CDT) (SUPPORTS 24X SEN HARN)	93-95 F (L32)	1	12040984
	1-M12	2.383	CLIP, CR/SHF POSN SEN WRG HARN (2.559)	93-95 F (L32)	2	12553341
418.		8.900	BOLT, HFX 6X1X16 14.2 HD OD FULL THD PS9.8 (OIL PAN) (USED AT #3, 5, 7, 8, 9&10 HOLES)	93-95	8	11513754
419.		8.917	NUT, HFH M6X1X6.5 ZOR 9 (OIL PAN)	93-95	2	3530297
420.	1-L25	1.426	REINFORCEMENT, OIL PAN (F7T)	93-95 F (L32)	2	14089825
421.	1-L27	1.456	GASKET, OIL PAN DRN PLUG (ALSO PART OF 413)	93-95 F (L32)	1	14090908
422.	1-L26	1.453	PLUG, OIL PAN DRN (ALSO PART OF 413) (M12X1.75X26.5) .	93-95 F (L32)	1	10017615
423.	1-N25	4.128	CLIP, TRANS FLUID CLR PIPE ...	94-95 F (M30)	1	10225624
	1-N25	4.128	CLIP, TRANS FLUID CLR PIPE ...	94-95 F (L32, M30)	1	14027939
	1-N25	4.128	CLIP, TRANS FLUID CLR PIPE (POS #1)	93 F (MD8)	1	10225624
	1-N25	4.128	CLIP, TRANS FLUID CLR PIPE (POS #4)	93 F (L32, MD8)	1	14027939

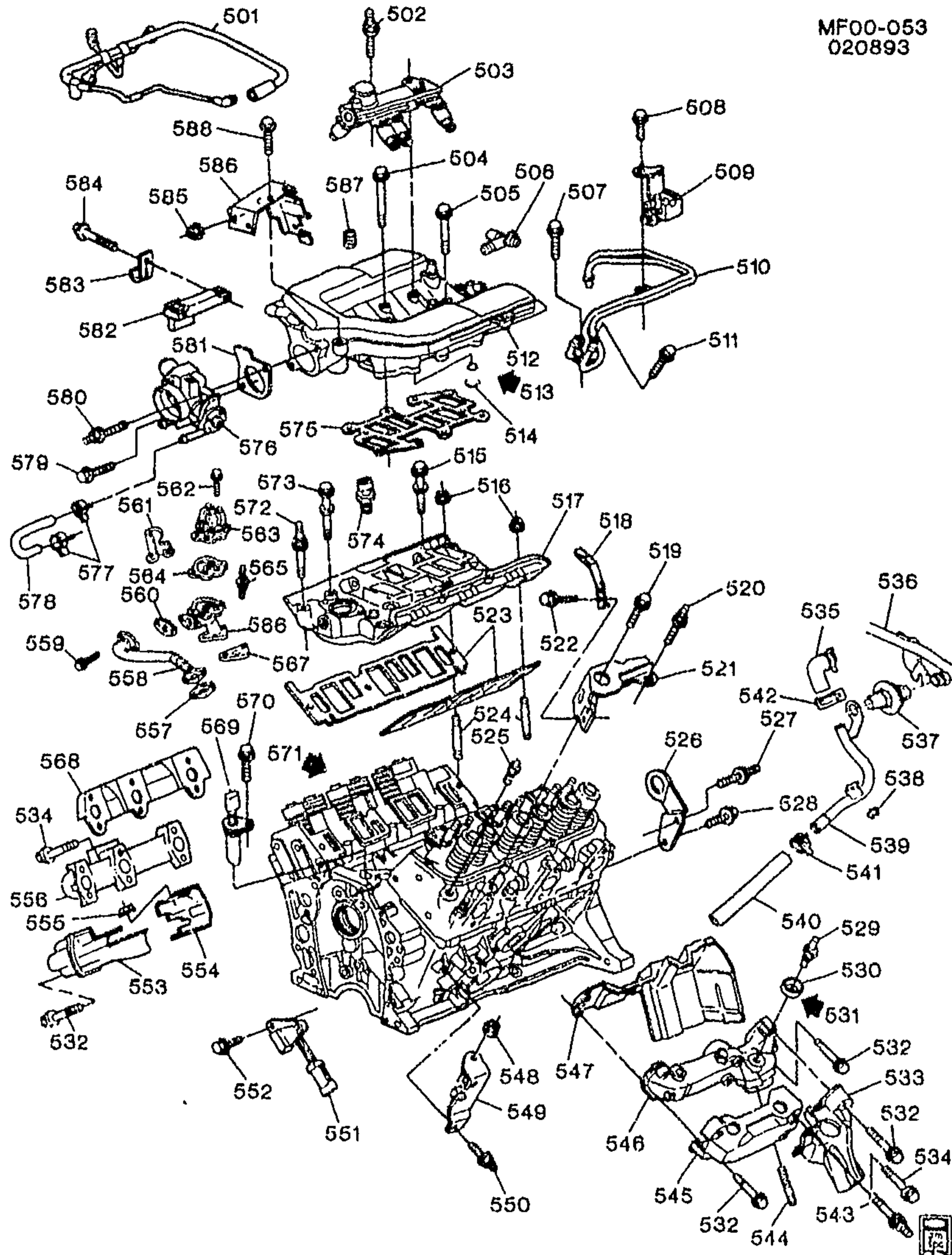
				MF00-052	
424.		8.800	SEALANT, RTV SILICONE RUBR (3.35 OZ TUBE) (OIL PAN)	93-95	AR 12345739
425.	1-L26	1.428	STUD, OIL PAN (M6X1X29.7) (M6X1.0X29.7)	93-95	F (L32) AR 10044847
	1-L26	1.428	STUD, OIL PAN (USED AT #1&2 HOLES) (M6X1 BOTH ENDS, 8.75, 8.25, TORX, POR, 280M) (8.981)	93-94	F (L32) 2 14091880
426.	1-M2	1.652	BOLT, O/PMP (M10X1.5X50 10.9 POR) (8.900)	93-95	F (L32) 1 11508355
427.	1-M2	1.609	PIN, OIL PRESS RLF VLV SPR ST (ALSO PART OF 433)	93-95	F (L32) 1 838839
428.		8.900	BOLT, HFH (M6X1X20 9.8 PZOR (O/PUMP CVR) (ALSO PART OF 436) (AC-DELCO #11508600) ..	93-95	2 11508600
429.	1-M2	1.609	VALVE, OIL PRESS RLF (ALSO PART OF 433)	93-95	F (L32) 1 3702366
430.	1-M2	1.609	SPRING, OIL PRESS RLF VLV (ALSO PART OF 433)	93-95	F (L32) 1 10044435
431.	1-M3	1.656	SCREEN, O/PMP (W/TUBE)	93-95	F (L32) 1 10118624
432.	1-M2	1.609	PLUG, OIL PRESS RLF VLV BORE (ALSO PART OF 433) (NON-THD 7/16 DIA, 13/32 LGTH) (CHAM ENDS, STL)	93-95	F (L32) 1 3704871
433.	1-M3	1.723	COVER, O/PMP (ALSO PART OF 436) (INCL 427, 429, 430, 432) ...	93-95	F (L32) 1 10118627
434.	1-M3	1.723	BOLT, O/PMP CVR (ALSO PART OF 436) (O/PMP CVR) (HEX 6X1X25 10.9 PS 23MM THD) (8.900) (AC-DELCO #11509417)	93-94	4 11509417
		8.900	BOLT, HFH M10X1.5X50 10.9 POR (ALSO PART OF 436) (O/PMP CVR)	94-95	4 11508355
435.		8.939	PIN, M6X16 STL PL (ALSO PART OF 409) (OIL FLTR ADAP)	93-95	1 11503504
436.	1-M2	1.652	PUMP, OIL (INCL 428, 433, 434) ..	93-95	F (L32) 1 10118640
437.		8.939	PIN, M6X16 STL PL (O/PMP LOC)	93-95	1 11503504
438.	1-M4	1.724	SEAL, O/PMP (O RING) (ALSO PART OF 442) (1.639) (AC-DELCO #10477565)	93-95	F (L32) 1 10477565
439.	1-M2	1.639	SHAFT, O/PMP DRV	93-95	F (L32) 1 477248
440.	1-M7	1.840	GASKET, OIL FLTR ADAP (1 RET HOLE) (GSKT MAY LOOK DIFFERENT THAN ORIGINAL) ...	93-95	F (L32) 1 12337894
441.	1-M6	1.837	PLUG, OIL FLTR BYPASS HOLE (.25-18X.475 FULL THREAD) (8.971)	93-94	F (L32) 1 14081701
	1-M6	1.837	PLUG, OIL FLTR BYPASS HOLE (INT SOC, 1/4-18 THD, .41, W/THD SEALER) (8.970)	93-95	F (L32) 1 14102589
442.	1-M2	1.639	DRIVE, O/PMP (INCL 438) (AC-DELCO #1104072)	93-95	F (L32) 1 1104072
443.	1-M2	1.639	CLAMP, O/PMP DRV (2.363)	93-95	F (L32) 1 477217
444.		8.900	BOLT, M10X1.5X35 (O/PMP DRV CLA)	93-95	1 11513606

RPO DEFINITIONS

L32 - ENGINE, 3.4L, V6, (3.4S), SFI, OHV

MD8 -- TRANSMISSION,AUTOMATIC 4--SPEED(THM700R4/4L60)
M30 -- TRANSMISSION,AUTOMATIC 4 SPEED,4L60E,ELECTRONIC

MF00-053
020893



MF00-053

1993-1995 F ENGINE ASM-3.4L V6 PART 5 MANIFOLDS & FUEL RELATED PARTS (L32/3.4S)

501.	1-M4	1.745	HARNES, PCV VLV (SEE "VAPOR CANISTER LINES & VALVES" ILLUSTRATION IN GRP. 3.000 FOR DETAILED VIEW.)	93-95 F (L32)	1 10217828
------	------	-------	---	---------------------	------------

502.	1-M28	3.330	STUD, F/INJN FUEL RL (M6X1/M8X1.25) (3.265)	93-95	F (L32)	1	14089222
503.		N.S.	RAIL, SEQ M/PORT F/INJN FUEL (SEE "FUEL INJECTOR RAIL" ILLUSTRATION IN GRP. 3.000 FOR DETAILED VIEW.)				
504.	1-M26	3.275	BOLT, INT UPR MANIF (M8X1.25X84MM)	93-95	F (L32)	6	14078896
505.	1-M26	3.275	BOLT, INT UPR MANIF (M8X1.25X70) (7.518)	93-95	F (L32)	2	10062904
506.	1-M27	3.278	FITTING, INT MANIF VAC (ALSO PART OF 512)	93-95	F (L32)	1	10044942
507.		8.900	BOLT, HFH, M8X1.25X20, 17THD, 18OD (FUEL PIPE BRKT)	93-95		1	11515756
508.		8.900	BOLT, HFH (M6X1X20 9.8 PZOR (EVAP EMIS CNSTR PURGE SOL VLV BRKT) (AC-DELCO #11508600)	93-95		1	11508600
509.		N.S.	VALVE, EVAP EMIS CNSTR PURGE SOL (SEE "VAPOR CANISTER & LINES" ILLUSTRATION IN GRP. 3.000 FOR DETAILED VIEW.)				
510.	1-M25	3.163	PIPE, FUEL FEED & RTN (2-LINE STEEL)	93-95	F (L32)	1	10191707
	1-M25	3.163	PIPE, FUEL FEED & RTN	93	F87	1	10268081
	1-M25	3.163	PIPE, FUEL FEED & RTN	94-95	F67 (L32)	1	10268082
	1-M25	3.163	PIPE, FUEL FEED & RTN	94-95	F87 (L32)	1	10268081
511.		8.977	SCREW, HWH TAP M6.3X1.81X13 13 OD PZOR (FUEL FEED PIPE CLIP)	93-95		1	12338139
512.	1-M25	3.265	MANIFOLD, UPR INT (INCL 506, 513, 514, 587)	93-95	F (L32)	1	10118668
513.		8.800	SEALANT (ALSO PART OF 512) (INT MANIF VAC TUBE) (1.097) ..	93-95		AR	12345493
514.	1-M25	3.265	TUBE, INT MANIF VAC (ALSO PART OF 512)	93-95	F (L32)	1	10078957
515.	1-M26	3.275	BOLT, INT MANIF (#2, 3, 4, 8 9 HOLES) (M8X1.25X65)	93-95	F (L32)	5	10070191
516.	1-M26	3.275	NUT, LWR INT MANIF (M8X1.25, W/CON WASHER)	93-95	F (L32)	3	10070189
	1-M26	3.275	NUT, LWR INT MANIF (M8X1.25) (8.915) (AC-DELCO #11514596)	94	F (L32)	1	11514596
517.	1-M25	3.265	MANIFOLD, LWR INT	93-95	F (L32)	1	10137051
518.		DISCON	BRACKET, FUEL PIPE (3.162) ...				10154714
519.		8.900	BOLT, HFH M10X1.5X20 9.8 PZOR (ENG LIFT FRT BRKT)	93-95		1	11508202
520.	1-E13	0.004	STUD, ENG LIFT FRT BRKT (HFH 10X1.5X20, M8X 1.25X15, 9.8 POR, 21.5 OD 43.5 TL)	93-95	F (L32)	2	10048662
521.	1-E13	0.004	BRACKET, ENG LIFT FRT	93-95	F (L32)	1	10055426
522.		8.900	BOLT, HEX LARGE FLANGED M6X1X10 PC (FUEL PIPE BRKT) .	93-95		1	11508567
523.		N.S.	GASKET, LWR INT MANIF (*KIT1, KIT2)				
524.	1-M26	3.275	STUD, LWR INT MANIF (M8X1.25X15, M8X1.25X28)	93-95	F (L32)	3	10044959

525.	1-L24	1.150	SENSOR, ENG COOL T/GA (3/8-18 THD) (2 TERM, CAN BE USED AS 1 TERM CONN) (AC-DELCO #213-77)	93-95 F (L32)	1	25037332
526.	1-E13	0.004	BRACKET, ENG LIFT RR	93-95 F (L32)	1	14033070
527.	1-E13	0.004	STUD, ENG LIFT RR BRKT (1993 ONLY) (HFH 10X1.5X20, M8X 1.25X15, 9.8 POR, 21.5 OD 43.5 TL)	93 F	AR	10048862
528.		8.900	BOLT, HFH M10X1.5X20 9.8 PZOR (ENG LIFT RR BRKT)	93-95	AR	11508202
529.	1-N14	3.682	SENSOR, HTD OXY (W/WIRE LEAD, M18X1.5-6E) (AC-DELCO #AFS22)	93-95 F (L32)	2	25162753
530.	1-N14	3.680	GASKET, OXY SEN	93-95 F	2	5617102
531.		8.800	LUBRICANT, ANTI-SEIZE (DRY FILM), 4 OZ., BRUSH TOP CAN (OXY SEN)	93-95	AR	12377953
532.	1-M26	3.275	BOLT, EXH MANIF	93-95 F (L32)	8	10191777
533.	1-N4	3.602	SHIELD, EXH MANIF HT (REAR) .	93-95 F (L32)	LH	10191771
534.	1-M26	3.275	BOLT, EXH MANIF	93-95 F (L32)	AR	10191778
535.	1-N14	3.680	CONNECTOR, SECD AIR INJN CHK VLV PIPE (AT PIPE) (3.675) .	93-95 F (L32)	1	10217106
	1-N14	3.680	CONNECTOR, SECD AIR INJN CHK VLV PIPE (AT PIPE) (5/8 X 5/8 X 3/16)	94-95 F (L32, M49)	1	24504030
536.	1-N11	3.675	PIPE, SECD AIR INJN CHK VLV (AC-DELCO #10235782)	93 F (L32, M49)	1	10235782
	1-N11	3.675	PIPE, SECD AIR INJN CHK VLV (AC-DELCO #10235782)	94-95 F (L32, M49)	1	10235782
537.	1-N5	3.670	VALVE, SECD AIR INJN CHK (AC-DELCO #214-419)	93-95 F (L32, M49)	2	22048212
538.		8.917	NUT, HFH, M8X1.25, 17.9 OD, 738 THK, 13MM HEX, 10, Z ^F (SECD AIR INJN PIPE) (8.915) (AC-DELCO #11514596)	93-95	1	11514596
539.	1-N11	3.675	PIPE, SECD AIR INJN PUMP (BACK PIPE) (AC-DELCO #219-212)	93-95 F (L32, M49)	1	10227073
540.	1-N11	3.675	HOSE, SECD AIR INJN PUMP ...	93-95 F (L32, M49)	1	10242422
541.		8.948	CLAMP, 28.6-86.2 DIA WORM GEAR (SECD AIR INJN PUMP HOSE) (AC-DELCO #12338017)	93-95	1	12338017
542.		8.948	CLAMP, SPR (25-29MM) (SECD AIR INJN CHK VLV HOSE)	93-95	2	10108255
543.	1-M26	3.275	STUD, EXH MANIF	93-95 F (L32, M49)	LH	10191776
544.	1-N5	3.613	STUD, EXH PIPE	93-95 F (L32)	4	10220453
545.	1-N4	3.602	SHIELD, EXH MANIF HT (FRONT)	93-95 F (L32)	LH	10191774
546.	1-N3	3.601	MANIFOLD, EXH	93-95 F (L32)	LH	10182337
547.	1-N4	3.602	SHIELD, EXH MANIF HT INR (3.270)	93-95 F (L32)	LH	10191769
548.		8.915	NUT, HFH, 10X1.5 6H THD, 21.3 OD, 9.8 THK 13 HEX DR, GRD 9, ZF (P/S PMP SUPT) (8.917)	93-95	1	10255857
549.	1-N27	6.606	BRACE, P/S PUMP RR	93-95 F (L32)	1	10166314

550.	1-N27	6.606	STUD, P/S PUMP SUPT (HFH M8X1.25X16 M8X1.25X15, 38 TL, 17.6 OD, POR, 9.8)) (3.275)	93-95 F (L32)	1	10066675
551.	1-M12	2.383	SENSOR, CR/SHF POSN (24X TO ECM) (AC-DELCO #213-147)	93-95 F (L32)	1	10137663
552.	1-M12	2.183	BOLT, CR/SHF POSN SEN (CR/SHF POSN SEN) (6X1X16 9.8 PE) (24X TO ECM)) (8.900) ...	93-95 F (L32)	2	10205042
553.	1-N4	3.602	SHIELD, EXH MANIF HT (FRONT)	93-95 F (L32)	RH	10151694
554.	1-N4	3.602	SHIELD, EXH MANIF HT (REAR)	93-95 F (L32)	RH	10191772
555.		8.917	NUT, HFH M6X1X6.5 ZOR 9 (EXH MANIF H/SHLD)	93-95	1	3530297
556.	1-N3	3.601	MANIFOLD, EXH (MUST ALSO ORDER 445096 PLUG AND 12345493 SEALANT)	93 F (L32, MD8)	RH	10151692
	1-N3	3.601	MANIFOLD, EXH	93-95 F (L32, M49)	RH	10151692
	1-N3	3.601	MANIFOLD, EXH (MUST ALSO ORDER 445096 PLUG AND 12345493 SEALANT)	94-95 F (L32, M30)	RH	10151692
557.	1-N14	3.680	GASKET, EGR VLV PIPE (66MM LONG) (*KIT2) (AC-DELCO #10239631)	93-95 F (L32)	1	10239631
558.	1-N11	3.675	PIPE, EGR VLV	93-95 F (L32)	1	10217283
559.	1-N11	3.675	BOLT, EGR VLV PIPE (0.862)	93-95 F (L32)	4	14079747
560.	1-N14	3.680	GASKET, EGR VLV PIPE (TRFR TUBE) (*KIT2)	93-95 F (L32)	1	10115838
561.	1-N11	3.675	SHIELD, EGR VLV PIPE HT	93-95 F (L32)	1	10215538
562.	1-N11	3.671	BOLT, EGR VLV (M8X1.25X25) (8.900)	93-95 F (L32)	1	11508040
563.	1-N5	3.670	VALVE, EGR (PROD 17091147) (W/O GASKET) (AC-DELCO #214-5004)	93-95 F (L32)	1	17091147
564.	1-N14	3.680	GASKET, EGR VLV (3.671) (AC-DELCO #219-323)	93-95 F (L32)	1	10100094
565.	1-N11	3.675	STUD, EGR VLV PIPE (M8X1.25X20 / M8X1.25X15) (2.183) (AC-DELCO #14054461)	93-95 F (L32)	1	14054461
	1-N11	3.675	STUD, EGR VLV PIPE (M6X1/M8X1.25) (3.265)	93-95 F (L32)	1	14089222
566.	1-N14	3.680	ADAPTER, EGR VLV	93-95 F (L32)	1	10099940
567.	1-N11	3.671	GASKET, EGR VLV ADAP	93-95 F (L32)	1	10191741
568.	1-N4	3.602	SHIELD, EXH MANIF HT INR	93-95 F (L32)	RH	10233074
569.	1-M12	2.383	SENSOR, CM/SHF POSN (AC-DELCO #213-245)	93-95 F (L32)	1	24508214
570.	1-M12	2.383	BOLT, CM/SHF POSN SEN (M6 X 1 X 12) (HFH, 9.8 PE, 12.8 OD DR) (8.900) (AC-DELCO #11514149)	93-95 F (L32)	1	11514149
	1-M12	2.383	BOLT, CM/SHF POSN SEN (M6X1X12, FL HD) (8.900)	93-95 F (L32)	1	11516051
571.		8.800	SEALANT, RTV SILICONE RUBR (3.35 OZ TUBE) (LWR INT MANIF)	93-95	AR	12345730
572.	1-M26	3.275	STUD, LWR INT MANIF (USED AT #6 HOLE)	93-95 F (L32)	1	10069224