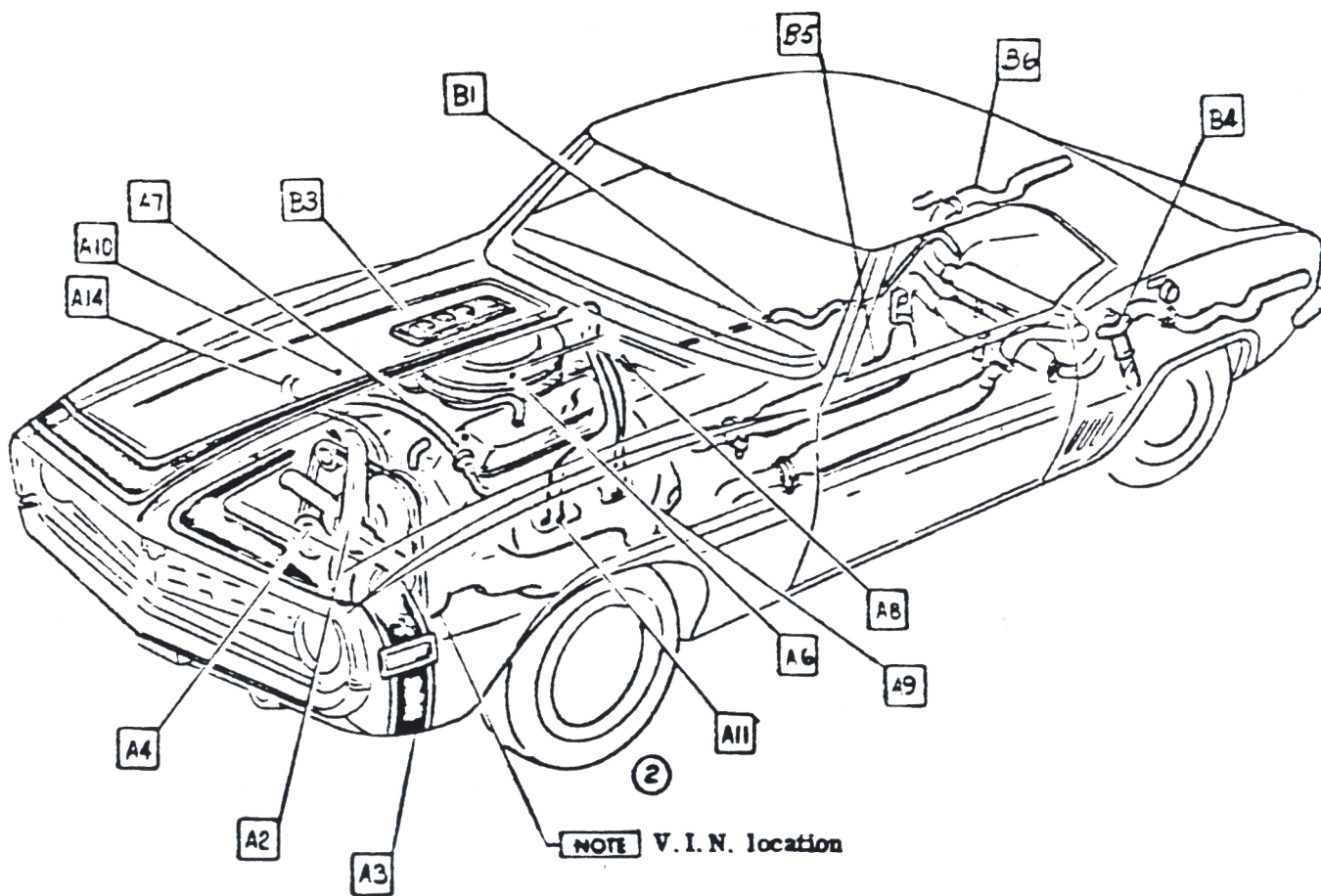


# 1969 CAMARO

## 1969 CAMARO 12000 SERIES



# FACTORY ASSEMBLY INSTRUCTION MANUAL

QUICK REFERENCE INDEX. To use, move either the hand or selection tool directly over the section you desire to reference. Simply click once with the mouse button and the manual will automatically jump to that section.



CHEVROLET

# ASSEMBLY INSTRUCTIONS

3940195

1969 CAMARO 12000 SERIES

## INTRODUCTION

THIS 1969 INSTRUCTION MANUAL ILLUSTRATES THE OPERATIONS REQUIRED FOR THE FINAL ASSEMBLY OF THE VEHICLE. IT HAS BEEN DESIGNED TO EXPEDITE THE LATEST ASSEMBLY INFORMATION TO THE USER. IT IS IMPERATIVE THAT ADDITIONS AND REVISIONS BE INSERTED IN THEIR PROPER PLACES IMMEDIATELY AND THAT SUPERSEDED SHEETS BE REMOVED.

THE MANUAL IS ARRANGED IN SECTIONS, PRODUCTION AND OPTION, CORRESPONDING AS CLOSELY AS PRACTICABLE TO THE UNIFORM PARTS CLASSIFICATION (U.P.C.) GROUPS TO WHICH THE COMPONENT PARTS AND ASSEMBLIES ARE ASSIGNED AT THE POINT OF RELEASE. A SECTION CONTENTS SHEET IS PROVIDED AT THE BEGINNING OF EACH SECTION WHERE WARRANTED. CERTAIN SECTIONS HAVE BEEN SUB-DIVIDED INTO AREAS OF ASSEMBLY WHICH ARE DETERMINED BY THE PHYSICAL LOCATION OF THE PARTS IN THE VEHICLE. THESE SUB-GROUPS ARE IDENTIFIED BY A LETTER PREFACING THE SHEET NUMBER (SHEET B2 FOR EXAMPLE). REFER TO THE GENERAL INDEX FOR THE PRODUCTION SECTIONS AND SUB-GROUPS, AND TO THE OPTION INDEX FOR ALL REGULAR PRODUCTION OPTIONS (R. P. O.) CURRENTLY AVAILABLE.

THE OPTION INDEX WILL INDICATE IF AN OPTION IS ILLUSTRATED OR NON-ILLUSTRATED. AN OPTION WILL BE ILLUSTRATED IF IT VARIES IN ASSEMBLY FROM REGULAR PRODUCTION OR NON-ILLUSTRATED IF IT ASSEMBLES THE SAME AS REGULAR PRODUCTION OR A RELATED OPTION.

CHEVROLET MOTOR DIVISION, GMCO		UPC	DATE	REV	BY	CHK
INTRODUCTION		O				
12000		A1				
DWG 7-8	RC REF: A1	L-	L-			
DATE RELY-67	H3 + L-	L-	L-			
		SHEET				



QUICK REFERENCE INDEX. To use, move either the hand or selection tool directly over the section you desire to reference. Simply click once with the mouse button and the manual will automatically jump to that section.

**UPC 0 GENERAL INFORMATION**

- A1 Introduction
- A2 General Index
- A3 General Information
- A4 General Information
- A5 General Instructions
- A6 General Instructions
- A7 General Instructions
- A8 Stapling Instructions
- A9 Cowl & Dash Panel Hole Piercing
- ② A10 Trim Heights
- B1 Labels & Stickers
- B2 Vehicle Identification Plate
- B3 Vehicle Protect-O-Plate
- C1 Shipping Protection
- C2 Miscellaneous Shipping List
- ① C3 Miscellaneous Shipping List
- D1 Lubrication
- D2 Lubrication
- D3 Lubrication
- D4 Cements & Sealers
- D5 Cements & Sealers
- D6 Cements & Sealers
- D7 Cements & Sealers
- D8 Fill Items, Gasoline & Miscellaneous
- E1 Paint & Trim (Open)
- F1 Publications (Open)
- G1 Export Information (Open)

**UPC 1 BODY**

- A. Dash Panel Area
- B. Instrument Panel Area
- C. Body Complete
- D. Mounting
- M. Heater

**UPC 2 FRAME**

**UPC 3 FRONT SUSPENSION**

**UPC 4 REAR SUSPENSION**

- A. Drive Line
- B. Suspension

**UPC 5 BRAKES**

- A. Cylinder Mounting & Lever
- B. Pipes
- C. Parking

**UPC 6 ENGINES**

- A. Belt Trains
- B. Cooling Electrical & Mounting
- C. Carburetion & Exhaust
- D. Controls

**UPC 7 TRANSMISSION**

- A. Column Mounting Controls
- C. Clutch

**UPC 8 FUEL & EXHAUST**

- A. Exhaust System
- B. Fuel System

**UPC 9 STEERING**

**UPC 10 WHEELS & TIRES**

**UPC 11-13 SHEET METAL-RADIATOR GRILLE**

- A. Inner Panels
- B. Outer Panels

**UPC 12 ELECTRICAL**

- A. Engine
- B. Instrument Panel
- C. Body
- D. Diagrams

**UPC 14 BUMPERS & MISCELLANEOUS**

- A. Front Bumpers
- B. Rear Bumpers

**OPTION INDEX**

CHEVROLET MOTOR DIVISION, GMC				UPC	DATE	SYM	REVISION RECORD	AUTH	DR	CK
GENERAL INDEX				0	5/23/68	1	SHEET C3 ADDED	—	EM	KB
					6/26/68	2	INCOMPLETE NOTE REMOVED	—	EM	DP
12000				A2						
DWG 4-8	RB	REF: A2	L-		L-					
DATE REL 4-29	HB	+ L-	L-	L-						
				X SHEET						



MODELS

SHEETS DESIGNATED 12000 REPRESENT ALL MODELS RELEASED FOR PRODUCTION

SYMBOLS



INDICATES CROSS REFERENCING OF PART NUMBERS OR NOTES.



INDICATES TORQUE.



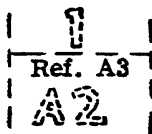
INDICATES A REVISION



INDICATES RPO PARTS THAT ARE INSTALLED THE SAME AS REGULAR PRODUCTION OR INSTALLED THE SAME EXCEPT AS ILLUSTRATED.



INDICATES APPLIED MATERIALS-ITEMIZED IN UPC 0. NUMERAL REPRESENTS A CERTAIN MATERIAL; LETTER REPRESENTS USAGE.



INDICATES RELATED SHEETS THAT CONTAIN INFORMATION REQUIRED TO COMPLETE A CERTAIN INSTALLATION. THIS IS NOTED ABOVE THE SHEET NUMBER.



EXISTING ITEM(S) OR PART OF AN ASSEMBLY

• CHEVROLET MOTOR DIVISION, GMC •				UPC	DATE	SYM	REVISION RECORD	AUTH.	DR	CK
GENERAL INFORMATION.				0	2-5-69	1	SYMBOL ADDED	Z1930E	IM	KS
MOD 12000				A3						
DWG 4-B	RB	REF: A3	L- L-							
DATE REL 4-27	HB	+ L-	L- L-	SHEET						



QUANTITY

QUANTITY WHEN SHOWN, REPRESENTS FULL AMOUNT PER VEHICLE FOR USAGE INDICATED.  
QUANTITY OF STAPLES REPRESENTS NUMBER REQUIRED PER PART.  
QUANTITY OF LUBES, SEALER AND MISCELLANEOUS BULK ITEMS IS SHOWN AT POINT OF APPLICATION WHENEVER A MEASURABLE AMOUNT CAN PRACTICALLY BE DETERMINED.

MISCELLANEOUS SHIPPING LIST

PERTAINS TO LOOSE ITEMS SHIPPED WITH VEHICLE FROM ASSEMBLY PLANTS-ITEMIZED IN UPC 0.

ATTACHING PARTS

THE INSTALLATION OF ALL ATTACHING PARTS IS SHOWN IN DESIGN POSITION & SHOULD BE ADHERED TO WHEREVER POSSIBLE. BOLT, NUT ASSEMBLIES & STAPLES MAY BE INSTALLED FROM EITHER DIRECTION UNLESS OTHERWISE SPECIFIED. THE TORQUE SYMBOL IS SHOWN ADJACENT TO THE DRIVEN PART AND THE MATING THREADED FASTENER MUST NOT MOVE DURING THE APPLICATION OF THE SPECIFIED TORQUE.

IT IS RECOMMENDED THAT TORQUE PREVAILING LOCK NUTS BE DRIVEN WITH AIR STALL TOOLS AT SPEEDS SLOWER THAN 350 R.P.M. THIS WILL PREVENT POSSIBLE GALLING OR DAMAGE TO THE LOCKING FEATURES.

FLUID CARRYING PIPES

PIPES CARRYING FLUIDS SUCH AS GASOLINE, OIL, BRAKE FLUID, ETC., MUST BE FREE OF ALL INCLUSIONS PRIOR TO INSTALLATION.

CLEARANCE DIMENSIONS

DIMENSIONS SHOWN ARE NOMINAL UNLESS OTHERWISE SPECIFIED.

LUBRICANT GREASE

LUBRICATION OPERATIONS ON ALL AFFECTED PARTS (e.g. SWIVELS, RODS, BUSHINGS, BOLTS, OR SHAFTS) MUST BE ACCOMPLISHED PRIOR TO SUB-ASSEMBLY, EXCEPT FOR ITEMS INCORPORATING LUBRICATION FITTINGS.

BELT TENSION

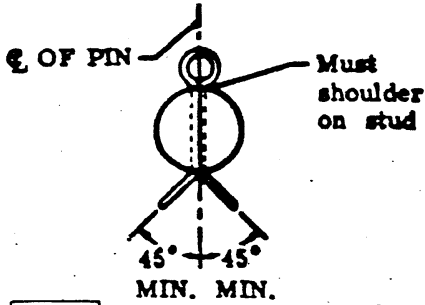
ALL BELT TENSION SPECIFICATIONS ARE SHOWN IN UPC 6 ENGINE.

SELF DRILLING SCREWS (SD)

①

IT IS RECOMMENDED THAT SELF DRILLING SCREWS, DESIGNATED (SD), BE DRIVEN WITH AIR STALL TOOLS AT SPEEDS BETWEEN 2500-3000 RPM.  
**CAUTION** Operator pressure should not exceed 30 pounds as it will inhibit drilling efficiency.

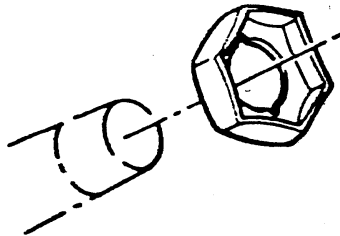
CHEVROLET MOTOR DIVISION, GMAC				UPC	DATE	SYM	REVISION RECORD	AUTH	DR	CR
GENERAL INFORMATION				0	6-21-68	1	NOTE ADDED	96390	FM	HB
MOD 12000				A4						
DWG 4-8	RB	REF: A4	L- L-							
DATE REL 4-29	HB	+ L-	L- L-							
				<input checked="" type="checkbox"/> SHEET						



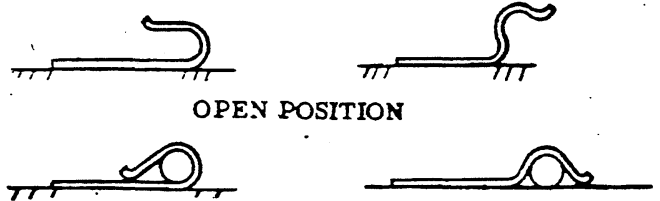
**NOTE** All cotter pins must be secured by spreading each leg away from the centerline of the pin not less than 45°.



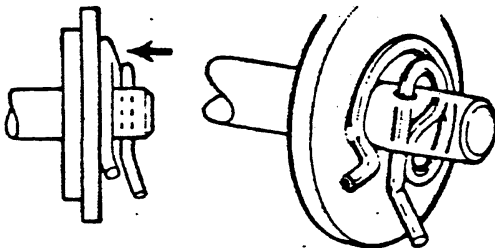
**NOTE** When castellated nuts & cotter pins are used together, torque nut as specified & then tighten to next notch for insertion of cotter pin except when otherwise specified. Cotter pin may be installed in either position shown but must be tight to prevent rotation or looseness.



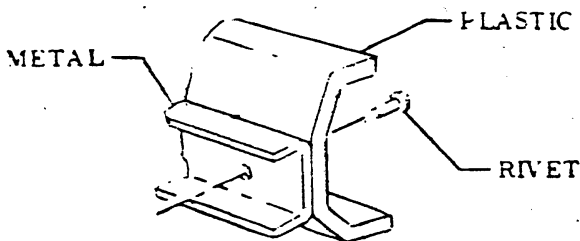
**NOTE** Assemble all type "MB stamped nuts" with open end up.  
**CAUTION** If nut is assembled with open end down, it will strip mating stud before proper installation torque is obtained.



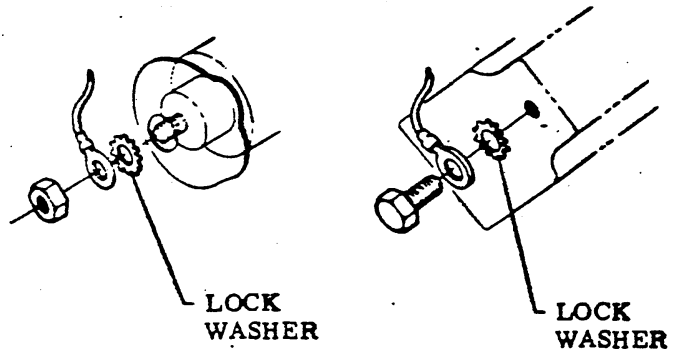
**NOTE** All non-hardened steel clips are to be clinched closed after wires, tubes or bowden cables are installed.



**NOTE** All special retainers must be installed as shown to provide end load in direction of arrow



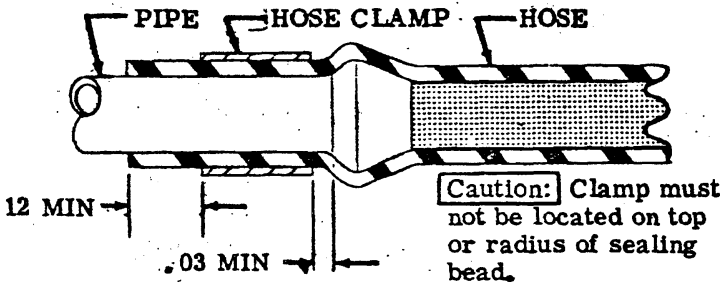
**NOTE** Rivet attachment between plastic & metal must be upset on metal side.



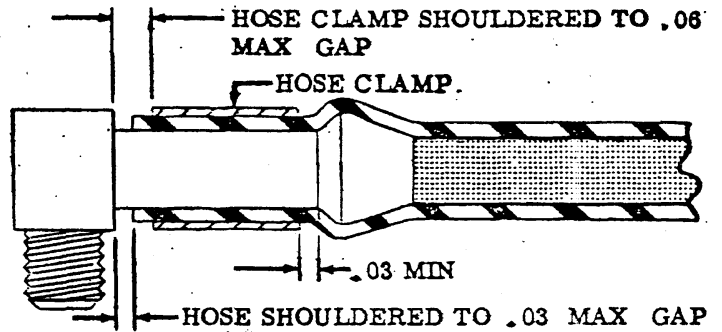
**NOTE** Lock washer must be positioned as shown to insure a proper ground.

• CHEVROLET MOTOR DIVISION, GM CORP.				UPC	DATE	REV	SECTION	BY	CHK
GENERAL INSTRUCTIONS				0					
12000				A5					
DWG	7-3	REF	A5	L	L				
DATE	FEB 1969	REV	+ 1-	L	L				

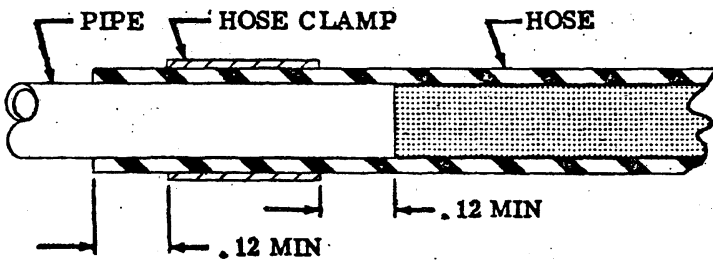
On hose clamp installations where the pipe, nipple, tee, connector etc has a bead, the hose clamp must be positioned directly beyond the bead. The hose must be assembled far enough to assure at least 1/8 hose protrusion beyond the clamp.



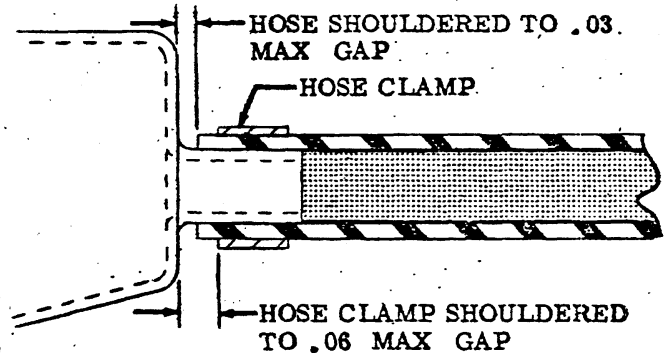
On hose clamp installations, where beaded hose nipples are short, the following procedure should be followed.



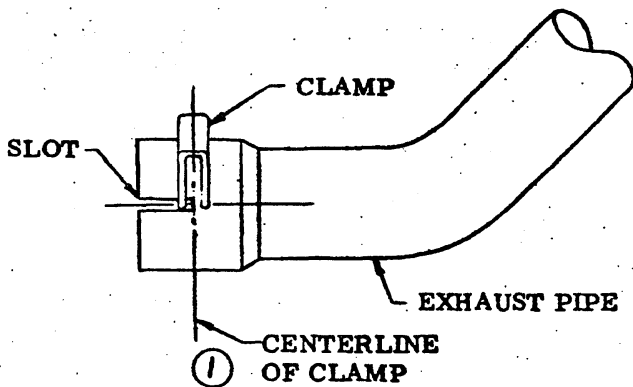
On hose clamp installations where the pipe, tubes or nipples have no beads the following procedure should be followed.



On hose clamp installations, where nipples up to and including 1/4 O.D. having no bead and are short as an integral part of a unit, the following procedure should be followed.



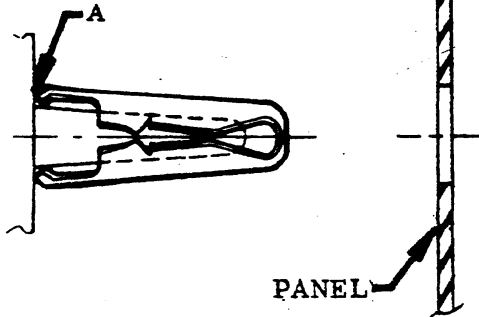
On all exhaust pipe clamp installations locate centerline of clamp to end of slot in exhaust pipe as follows.



• CHEVROLET MOTOR DIVISION, GMC •				UPC	DATE	SYM	REVISION RECORD	AUTH.	DR	CK
T I T L E	GENERAL INSTRUCTIONS			O	7-22-65	1	E OF CLAMP RELOCATED	99864	Fm	#12
	M O D	12000			A6					
DWG 4-8		R8	REF A6	L-		L-				
	DATE REL 4-29	H 8	+ L-	L-	L-					
				X	5	SHEET				

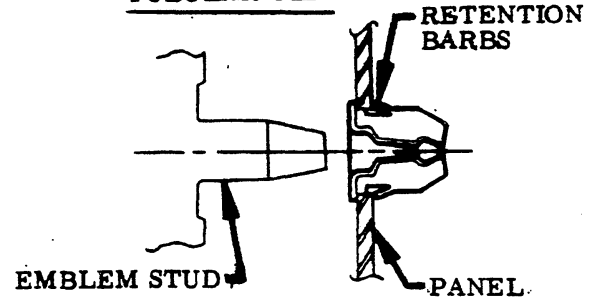


**HEADLESS TUBULAR CLIP**



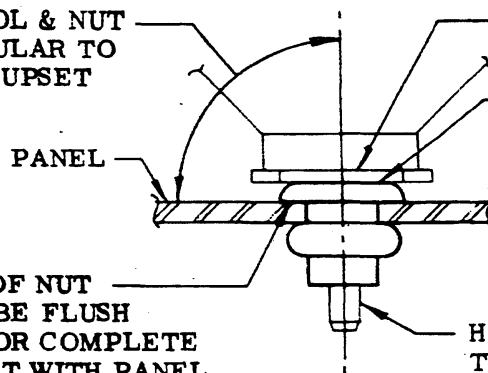
Install headless tubular clip on emblem stud so that clip contacts emblem as shown at point A, then push into hole in panel.

**TUBULAR CLIP**



Install tubular clip in hole in panel so that retention barbs are engaged on back of panel, then push stud into clip until back of emblem contacts panel.

HEADER TOOL & NUT PERPENDICULAR TO PANEL FOR UPSET



HEADER TOOL MANDREL

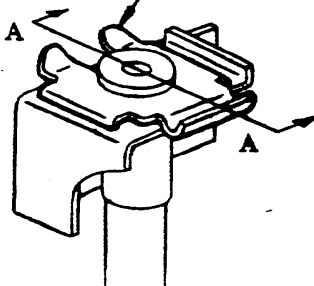
NUT THREADED TIGHT TO HEADER TOOL MANDREL PRIOR TO UPSET

UNDERSIDE OF NUT HEAD MUST BE FLUSH TO PANEL FOR COMPLETE 360° CONTACT WITH PANEL UPSET SHANK

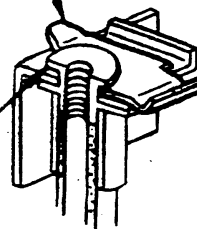
HEADER TOOL PULL UP STUD TO EXTEND THRU NUT PRIOR TO UPSET TO AVOID DEFORMED OR STRIPPED THREADS.

**RIVNUT TYPE PART INSTALLATION**

**NOTE** All special clips must be bottomed out on hose fittings to provide proper retention.



HOSE FITTING



SECT. A-A

**① SPRING CLIP INSTALLATION**

CHEVROLET MOTOR DIVISION, GM				UPC	4-29-69	1	SPRING CLIP ADDED	22930	KA	MB
GENERAL INSTRUCTIONS				0						
12000				A7						
DWG 4-3	RB	REF A 6.5	L-	L-						
DATE REL 4-29	MB	+ L-	L-	L-						
<b>ADVANCE REVISION</b>										



STAPLING

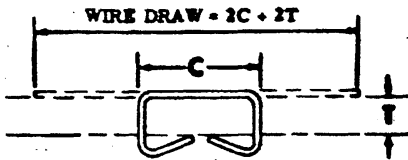


FIGURE 1

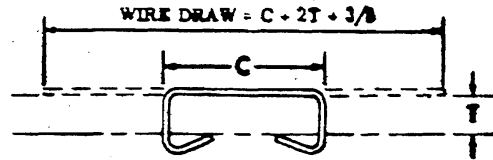
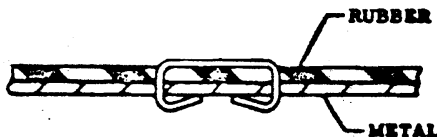
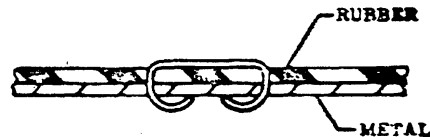


FIGURE 2

C = CROWN SIZE  
T = THICKNESS OF WORK



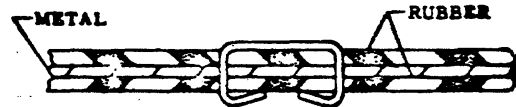
37 1/2° CLINCH



45° CLINCH



FLAT CLINCH



37 1/2° CLINCH SHOWN - 45° & FLAT CLINCH TYPICAL

**NOTE** STAPLES MUST NOT BE COUNTERSUNK IN THE RUBBER MORE THAN TWICE THE DIAMETER OF THE STAPLE WIRE TO AVOID TEARING RUBBER.

IN ORDER TO INSURE QUALITY STITCHING IT IS ESSENTIAL THAT THE WIRE DRAW (AMOUNT OF WIRE FED FOR EACH STITCH) BE THE CORRECT LENGTH FOR THE WORK TO BE STITCHED. THE LENGTH OF THE WIRE DRAW IS DEPENDANT UPON THE CROWN SIZE OF THE STAPLE TO BE USED AND THE THICKNESS OF THE WORK TO BE STITCHED.

AS A GENERAL RULE, STITCHES HAVING A CROWN WIDTH SIZE WITHIN THE RANGE OF .175 THROUGH .50 SHOULD HAVE SUFFICIENT WIRE DRAW SO THAT THE CLINCHED LEGS OF THE STAPLE JUST ABOUT MEET. (SEE FIG. 1). FOR STITCHES IN THIS RANGE OF CROWN SIZES THE CORRECT LENGTH OF WIRE DRAW WOULD BE: TWICE THE CROWN SIZE PLUS TWICE THE THICKNESS OF WORK TO BE STITCHED OR, WHEN REDUCED TO A FORMULA: WIRE DRAW = 2C + 2T.

FOR EXAMPLE: IF CROWN SIZE OF STITCH IS 7/16" AND THE THICKNESS OF WORK TO BE STITCHED IS 3/16", 2 TIMES 7/16" (OR 7/8") PLUS 2 TIMES 3/16" (OR 3/8"), EQUALS 1-1/4" WIRE DRAW.

STITCHES HAVING CROWN SIZES GREATER THAN .50 SHOULD HAVE SUFFICIENT WIRE DRAW SO THAT EACH

CLINCHED LEG OF THE STAPLE IS 3/16" IN LENGTH. (SEE FIG. 2). FOR STITCHES IN THIS RANGE OF CROWN SIZES THE CORRECT WIRE DRAW WOULD BE: CROWN SIZE PLUS TWICE THE THICKNESS OF WORK TO BE STITCHED PLUS 3/8", OR WHEN REDUCED TO A FORMULA: WIRE DRAW = C + 2T + 3/8".

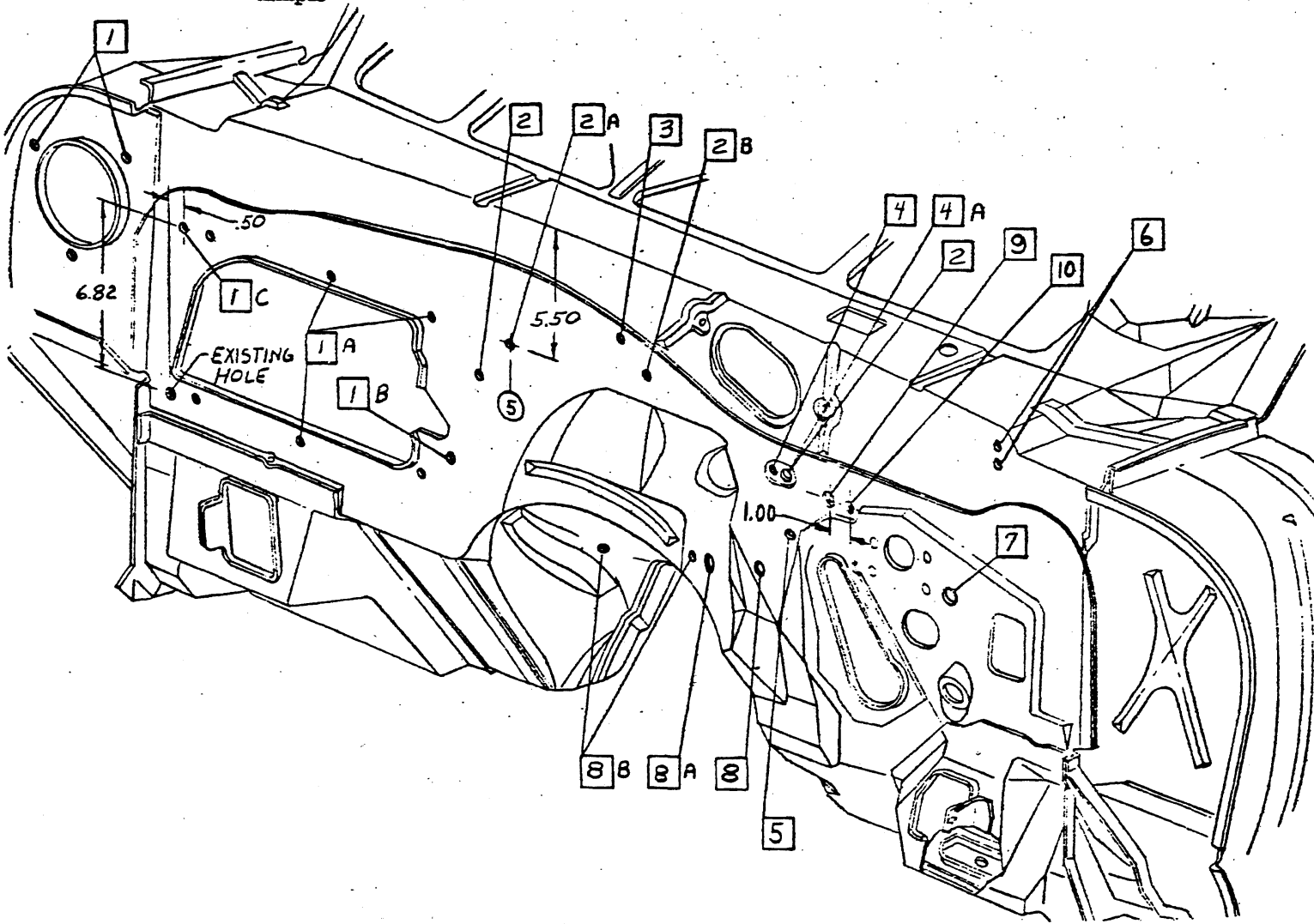
FOR EXAMPLE: IF CROWN SIZE OF STITCH IS 1-1/2" AND THE THICKNESS OF WORK TO BE STITCHED IS 1/2", THE CORRECT WIRE DRAW WOULD BE 1-1/8", PLUS 2 TIMES 1/2", (OR 1"), PLUS 3/8", EQUALS 2-1/2" WIRE DRAW.

THE ABOVE FORMULAS DO NOT TAKE INTO CONSIDERATION THE TYPE OF MATERIAL TO BE STITCHED. SOME MATERIALS MIGHT REQUIRE STAPLE LEG LENGTHS DIFFERENT THAN THOSE SHOWN IN FIGS. 1 & 2. HOWEVER, AS A GENERAL RULE THE FORMULA GIVEN IN FIG. 1 CAN BE USED FOR STITCHES HAVING CROWN SIZE WITHIN THE RANGE OF .175 THROUGH .50, WHILE THE FORMULA GIVEN IN FIG. 2 CAN BE USED FOR STITCHES HAVING CROWN SIZES GREATER THAN .50.

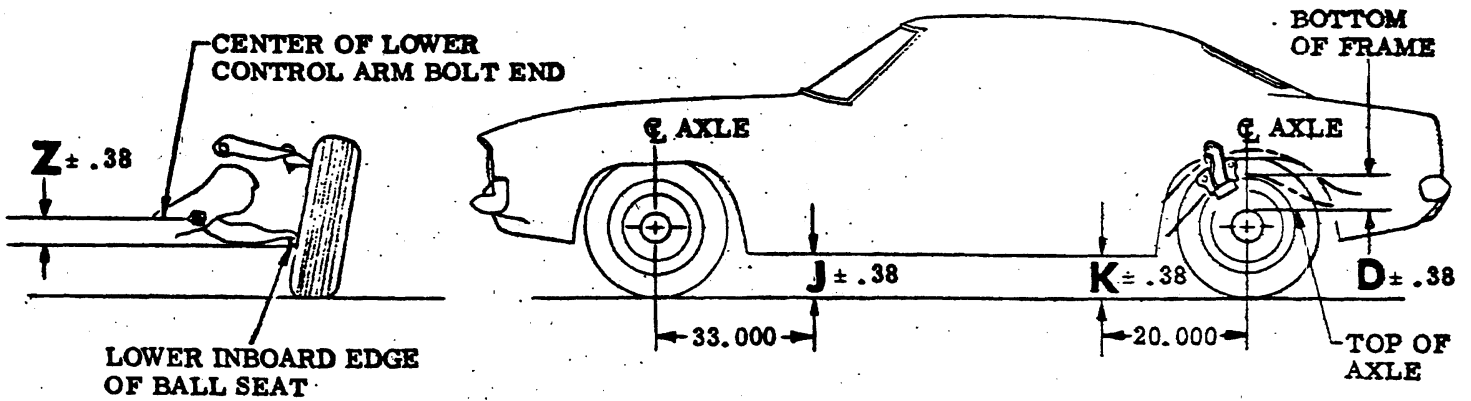
CHEVROLET MOTOR DIVISION, GMC		UPC	DATE	SYM	REVISION	RECORD	AUTH.	DR	CK
STAPLING INSTRUCTIONS		0							
12000		A8							
DWG 7-6	REF A7								
DATE: 5-7-68	HC + L								
		X SHEET							



- 1 RPO C48 .141/.144 DIA - 3 holes  
use cover as template  
A. 6 holes at existing dimples  
B. .38 DIA hole at existing dimple  
C. .38 DIA hole at location shown
- 2 RPO U63 .185/.189 DIA - 2 holes  
V-8 ENG at existing dimple  
A. 1 hole V-8 ENG at location shown  
B. 1 hole L-6 ENG at existing dimple
- 3 RPO U17 .50 ±.00 -.01 DIA hole at existing dimple
- 4 UPC 6 .185 DIA hole at existing dimple  
A. .50 ±.02 DIA hole at existing dimple
- 5 UPC 1 .147/.151 DIA hole L-6 ENG at existing dimple
- 6 RPO C06 .125/.129 DIA - 2 holes at existing dimple
- 7 RPO Z22 1.00 DIA hole at existing dimple
- 8 RPO M20 .920/.940 DIA hole at existing dimple  
A. 1.00 DIA hole at existing dimple  
B. .326/.340 DIA - 2 holes at existing dimple
- 9 RPO C60 1.00 dia hole at existing dimple.
- 10 RPO V75 .375 dia hole at location shown.



● CHEVROLET MOTOR DIVISION, GMC ●				UPC	DATE	SYM	REVISION	RECORD	AUTH.	LA	CK
TITLE COWL & DASH PANEL HOLE PIERCING				0			1 ITEM 9 ADDED				
NO 12000				A9			2 ITEM 10 ADDED				
DWG 3-20	RB	REF: Prel. AZ	L-	L-							
DATE Rev Y-29	DF	+	L-	L-							
				SHEET							



TIRES & OPTIONS	Z		J		K		D	
	SHIPPED	CURB	SHIPPED	CURB	SHIPPED	CURB	SHIPPED	CURB
E78 X 14 TIRE	2.46	2.53	9.24	9.14	9.01	8.59	5.90	5.42
F70 X 14 TIRE	2.51	2.59	9.35	9.24	9.14	8.72	6.01	5.51
E78 X 14-W/G31	2.48	2.56	9.51	9.43	9.68	9.31	6.72	6.29
F70 X 14-W/G31	2.55	2.62	9.61	9.52	9.79	9.42	6.81	6.38
E70 X 15 (JL8)Exc Z28	2.47	2.55	9.68	9.57	9.49	9.05	6.01	5.50
E70 X 15-W/G31	2.47	2.55	9.94	9.86	10.10	9.73	6.72	6.30
Z28	1.86	1.93	9.22	9.13	9.12	8.75	5.63	5.20

DIMENSIONS "Z", "J", "K" & "D" VERTICAL TO GROUND.

VEHICLE HEIGHTS

THE ABOVE DIMENSIONS SHOWN APPLY TO REGULAR PROD. OR ANY COMBINATION OF RPO BUILD.

**[NOTE]** Pull vehicle up 3 or more times, allow to settle, then measure "D", "J", "K" & "Z".

LOAD CONDITIONS

SHIPPING WEIGHT—VEHICLE AS BUILT TO PRODUCTION PARTS LIST SPECIFICATIONS INCLUDING COOLANT TO CAPACITY AND TWO (2) GALLONS OF GASOLINE.

CURB WEIGHT—SHIPPING WEIGHT PLUS GASOLINE TO CAPACITY

RECOMMENDED TIRE PRESSURE

CONV. & COUPE - 24 LBS FRONT & 24 LBS ± 2 REAR

• CHEVROLET MOTOR DIVISION, GMC •				UPC	DATE SYN	REVISION RECORD	AUTH	DR	CK
TRIM HEIGHTS				0	7-9-68 1	DOCUMENTATION ADDED	FM	BA	
					9-18-68 2	DOCUMENTATION REMOVED	FM	DP	
MOD 12000				A10					
DWG 6-25	FM	REF: A10	L-	L-					
DATEREL 6-26	DP	L-	L-	L-					
				X1 SHEET 1					

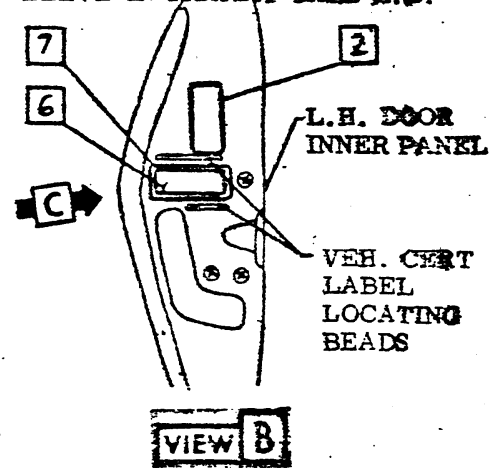
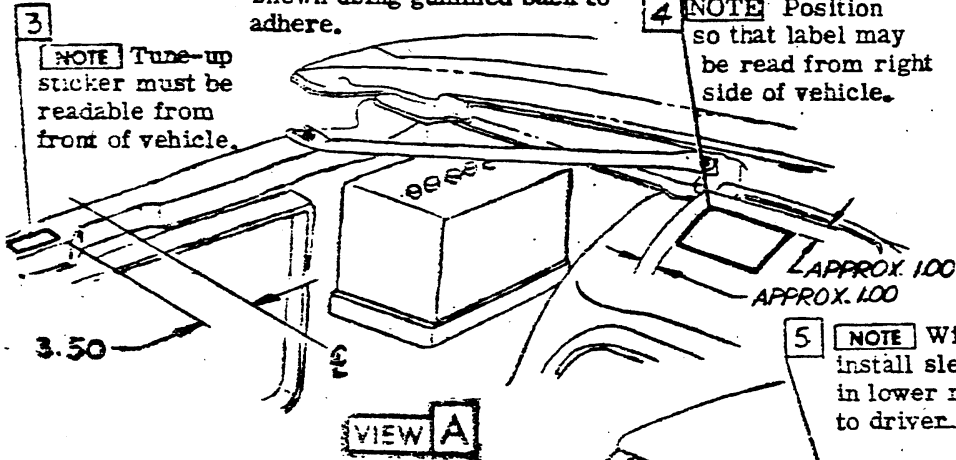


3940195

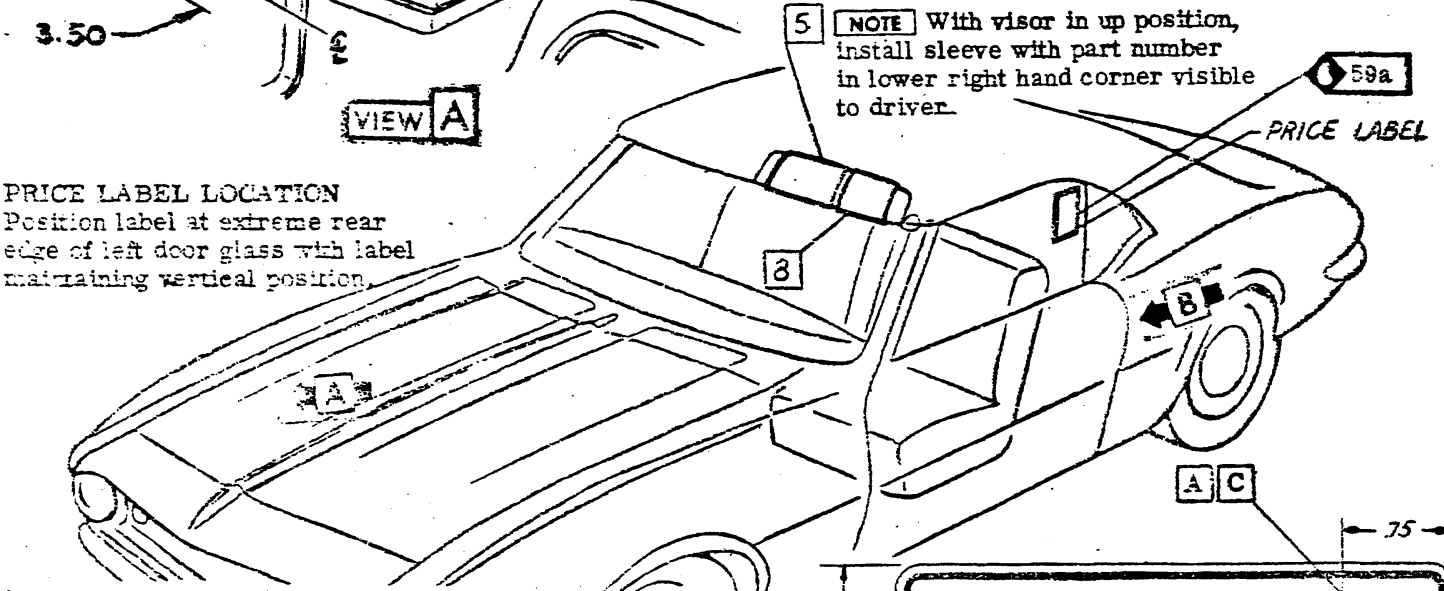
1969 CAMARO 12000 SERIES

- 1 59a ADHESIVE .00375 GAL.
- 2 3960699 CHART-TIRE PRESSURE STICKER  
NOTE Surface must be clean. Locate as shown using gummed back to adhere.
- 3 3953780 CHART-Exhaust emission engine tune up.
- 4 3406985 LABEL-CANADIAN EXPORT ONLY  
Surface must be clean. Locate as shown using gummed back to adhere.

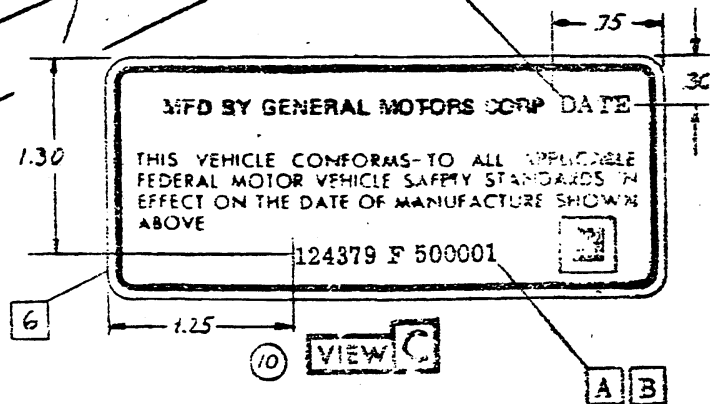
- 5 3961386 CHART-SUN-VISOR SLEEVE L.D.
- 6 3975438 LABEL-VEHICLE CERTIFICATION
- 7 3983908 OVERLAY-VEH CERT LABEL
- 8 9432022 SLEEVE-IN TRANSIT CARD L.D.



PRICE LABEL LOCATION  
Position label at extreme rear edge of left door glass with label maintaining vertical position.



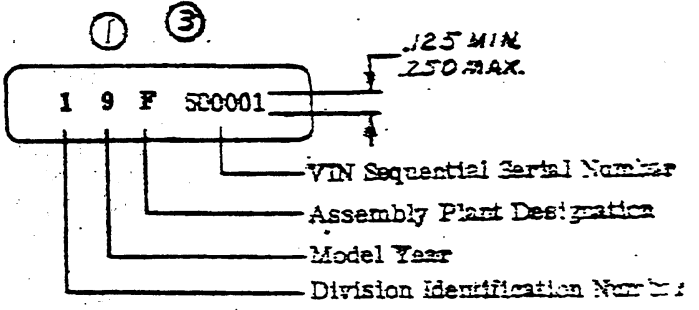
- A Letter in block capitals and numerals not less than 3/32 in. high at assembly plant. (#11 Pt. Type preferred)
- B Identification number must be same as vehicle identification number and rating plate
- C Current month and year in numerals.



DESCRIPTION	DATE	INITIALS	REVISION
LABELS & STICKERS	3-3-69		9 ITEM 8 ADDED 10 VIEW 3 ADDED
12000		O	
		BI	

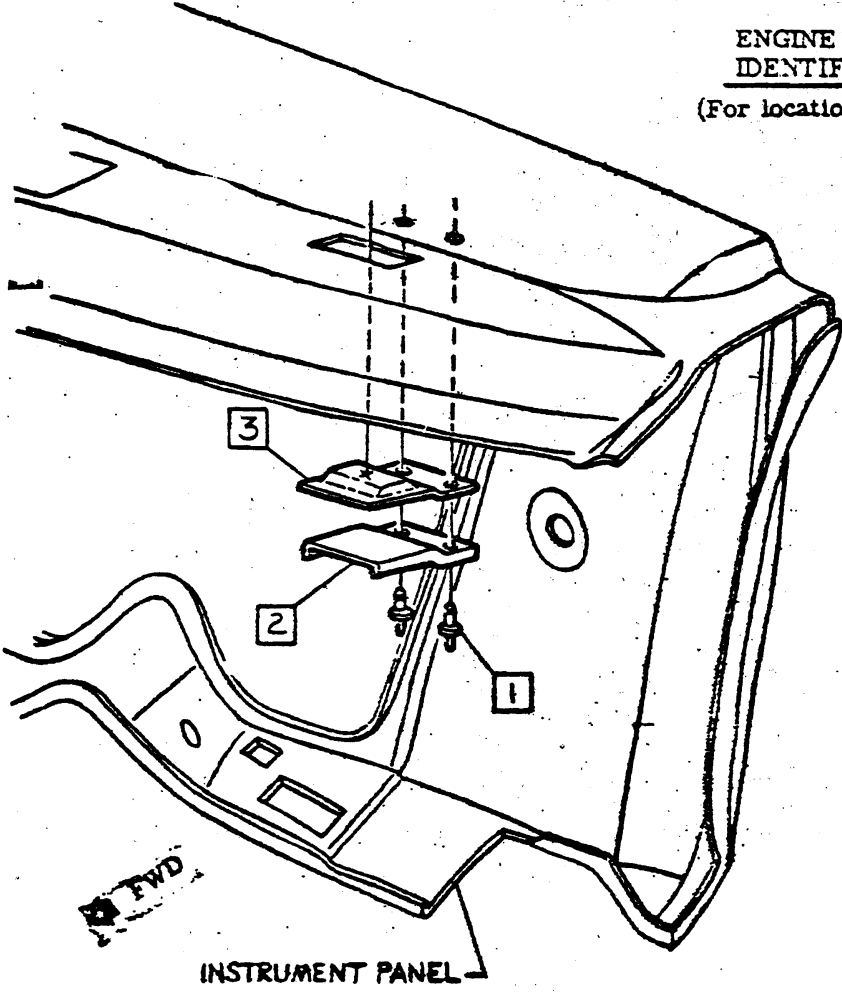


- 1 9423220 RIVET
- 2 3929911 REINFORCEMENT
- 3 3929909 PLATE



**ENGINE & TRANSMISSION VEHICLE IDENTIFICATION NUMBER SPECS.**

(For location see engine & transmission UPC or RPO)



INSTRUMENT PANEL

CHEVROLET MOTOR DIVISION, GM-CO.		UPC	DATE	SYM	REVISION REQUIRED	APPROV. BY
IDENTIFICATION NO. PLATE, V.L.N. SPECS.		0	2-11-65	1	MODEL YEAR REVISED	
			9-10-68	2	PROTECTION PLAN BAGGAGE BASKET	
					SEPARATION REMOVED	
M O D 12000		B2	1-24-69	3	500001 HAS 100001	22995 GCE
DWG 4-30 EM REF: Prel. B1 L-86026 L-						
DATE REL 5-1-68 L- L- L-						



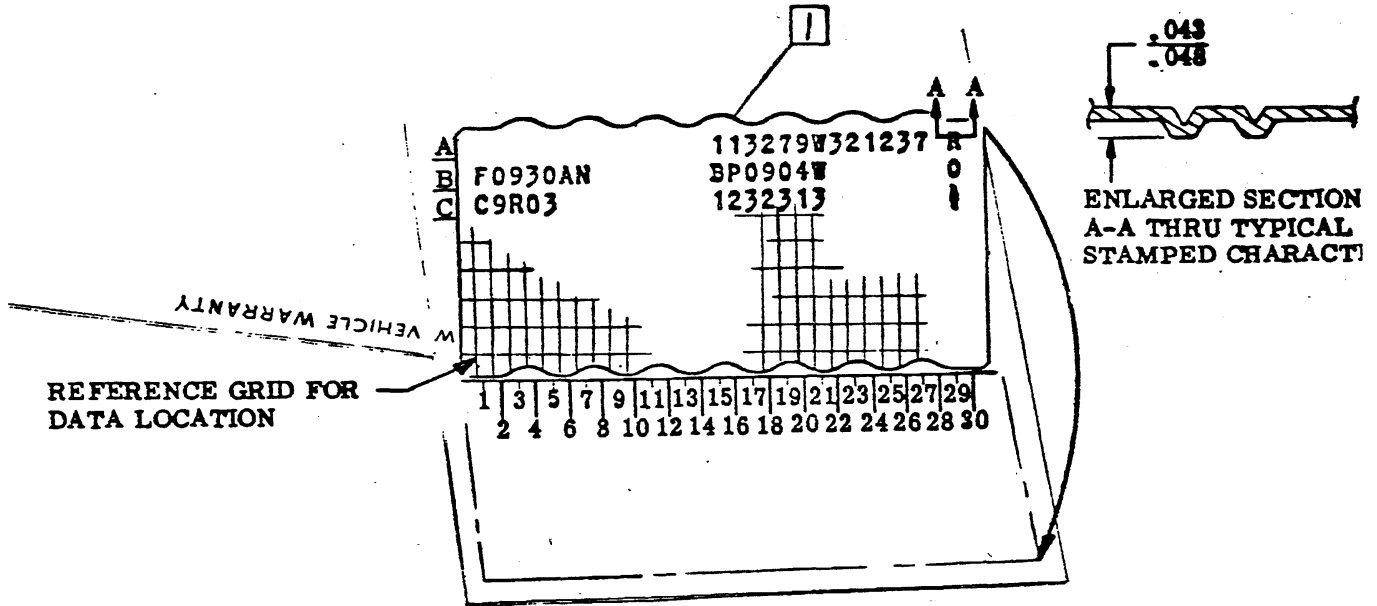
CHEVROLET

ASSEMBLY INSTRUCTIONS

3940195

1969 CAMARO 12000 SERIES

- 1 3865853 PLATE-After plate is stamped attach to adhesive backed portion of owners protection plan folder.



Stamp protect-o-plate with No. 35 size type with data at location noted below. Stamped side of plate must rear normally (not reversed or mirror image). Data or more than one type character length will start at indicated location & continue toward right for appropriate number of characters. Plate will be 33 columns long & 9 rows deep when option No. 28 size type is used.

LOCATION	DATA TO BE STAMPED
A-15	VEHICLE SERIAL NUMBER
***A-29	CARBURETOR SOURCE
B-1	ENGINE SOURCE, DATE & TYPE CODE
B-15	REAR AXLE TYPE, DATE & SOURCE CODE
#B-29	MONTH PRODUCED
C-1	CHEVROLET MANUFACTURED USE SOURCE & DATE. HYDRA-MATIC: USE CODING STAMPED ON UNIT PLATE EXCEPT THAT THE LARGE "C" PREFIX & THE LARGE SINGLE ALPHA SUFFIX ARE TO BE DROPPED. WARNER GEAR: USE CODE "W" ONLY, WITH NO DATE CODE.
*C-15	POWER STEERING CODE
*C-16	POWER BRAKE CODE
*C-17	RADIO CODE
*C-18	DISC BRAKE
*C-19	AIR CONDITIONING CODE
*C-20	POWER WINDOW CODE
*C-21	POWER SEAT CODE
C-29	CHEVROLET "BOW TIE" SYMBOL

# CODE		*** CODE	
JANUARY	1	BAY CITY	B
FEBRUARY	2	CARTER	C
MARCH	3	HOLLY	H
APRIL	4	ROCHESTER	R
MAY	5		
JUNE	6		
JULY	7		
AUGUST	8		
SEPT.	9		
OCTOBER	0		
NOV.	N		
DEC.	D		

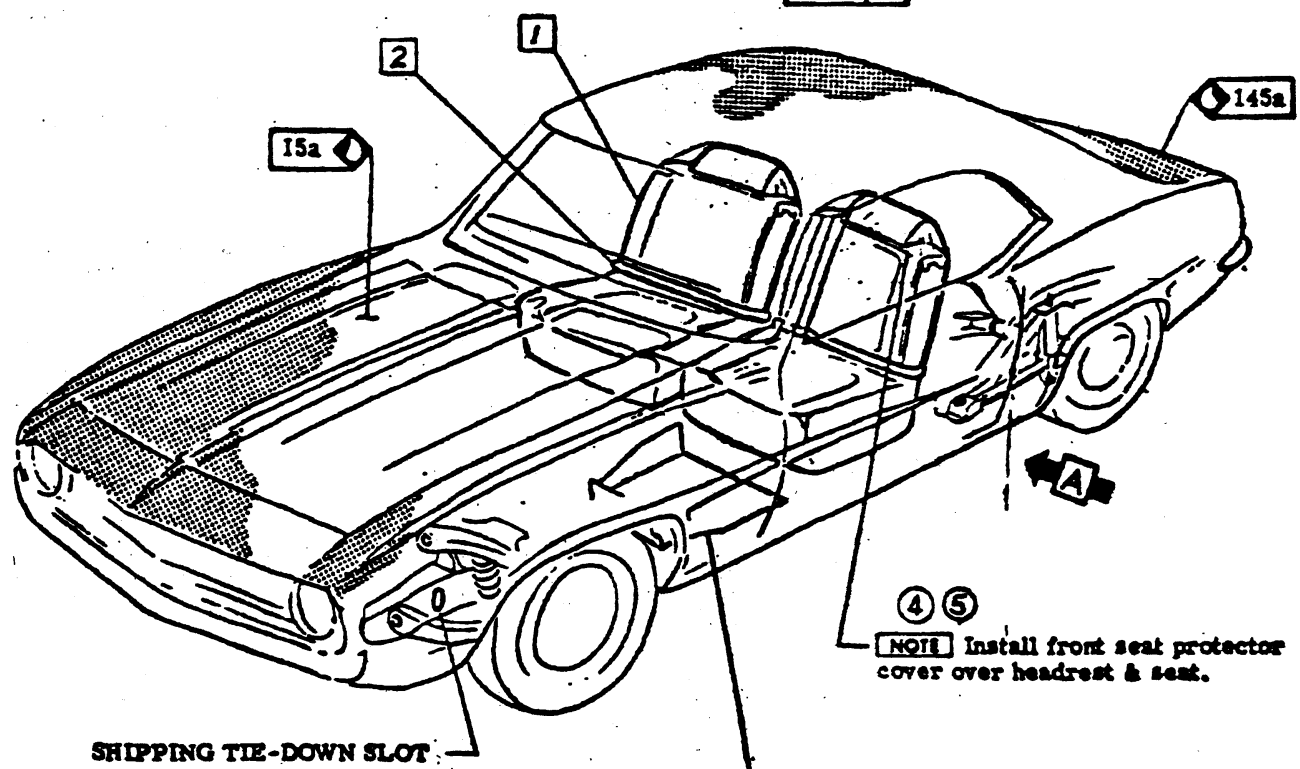
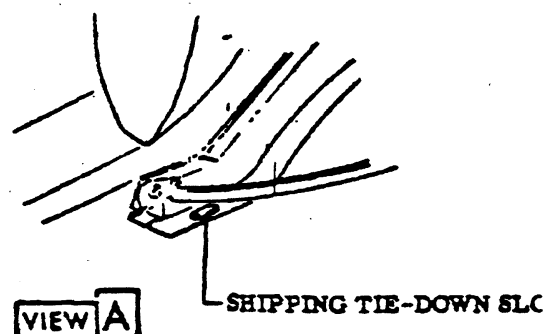
CODE	
N40	1
J50	1
U63/U69/U79/U80	3
J52	3
C60/C75	1/3
A31	3
A42	3

\*FOR OTHER PLATE DETAILS SEE DSSM NO. 6.

• CHEVROLET MOTOR DIVISION, GMC •				UPC	DATE	SYNCHRON RECORD	AUTH.	DR	CK
CUSTOMER VEHICLE PROTECT-O-PLATE				0	1969	1			
MO 12000				B3					
DWG 4-30	REF: B3	L-	L-						
DATE RELS-1		L-	L-						



- ⑥ ② ① 3965116 COVER-FRONT SEAT PROTECTOR
- ③ 1379670 RPO AL4 (12337-437).
- ② 7600004 BAND ASM.
- ③ 145a LIQUID WAX
- ④ 3918729 CVR-FLR MAT PROTECTOR
- ⑤ 15a OIL-.01 GALS.



CHEVROLET MOTOR DIVISION, GMC		UPC	DATE SYN	REVISION RECORD	AUTH	DR	CR
SHIPPING PROTECTION & SHIPPING TIE-DOWN SLOTS		0	1-16-69	1. Initial 12000 cover			E
			2-1-69	2. WAS 4461452 COVER			36955F.20
			3-1-69	3. WAS 4421496 COVER			
			5-19-69	4. NOTE REVISED			96272
			9-27-69	5. COVER NOTE REVISED			343257.7117
				6. WAS 1379671 COVER			992735F.20
DRG 5-7	FM REF. C2						
DATE REL. 5-3-69	AK						





CHRYSLER

**ASSEMBLY INSTRUCTIONS**

3940195

1969 CAMARO 12000 SERIES

PART NO.	NAME	REF.	MODELS	SHPG. QTY.
3955313	ATTACHMENT UNIT-LICENSE PLATE		ALL	1
3955560	FOLDER - NEW VEHICLE WARRANTY AND PROTECTION PLAN		ALL	1
3950779	ENVELOPE-OWNERS INFO BOOKLET		ALL	1
3955545	MANUAL-OWNERS		ALL	1
732970	MANUAL-OWNERS	CANADA	ALL	1
733758	CARD-CUSTOMER VEHICLE IDENT PLATE	CANADA	ALL	1-8
3951207	CARTRIDGE UNIT-STEREO TAPE PLAYER	RPO U57	ALL	1
3913832	INSTRUCTION SHEET-WHEEL TRIM RING	RPOJL8-J52-P06-P28-ZJ7	ALL	1
3884885	INSTRUCTION SHEET-WHEEL TRIM RING	RPO N96	ALL	1
7306110	INSTRUCTION SHEET-RADIO OPERATING	RPO U69	ALL	1
⑮ 3791595	INSTRUCTION SHEET-WHEEL TRIM COVER	RPO P02	*	1
⑯ 9422212	EXTENSION-TIRE VALVE STEM	RPO P02	*	1
9417730	EXTENSION-TIRE VALVE STEM	RPO N95-P01	ALL	1
9417745	EXTENSION-TIRE VALVE STEM	RPO N96	ALL	1
9417466	EXTENSION-TIRE VALVE STEM	RPO PA2	ALL	1
3934186	INSTRUCTION-SPACE SAVER INFLATION	RPO N65	ALL	1
REF.	CIGARETTE LIGHTER		ALL	1
REF.	EXTRA KEYS (PLACE IN ENVELOPE)		ALL	1
3958690	ENVELOPE-KEY		ALL	1
3927345	TAG-SPEED CRUISE CONT INSTRUCTION	RPO K30	ALL	1

- 1 - Place in instrument panel compartment.
- 4 - Furnished by Fisher Body within each body.

⑬ 5 - Attach Customer Vehicle Identification Plate to card. REF: UPC 0 Sheet B3.

● CHRYSLER MOTOR DIVISION, GMC ●				UPC	DATE	SYM	REVISION RECORD	AUTH. DP
MISCELLANEOUS SHIPPING LIST				0	8-20-69	15	3791595 INSTRUCTION ADDED	39600
12000				C2		16	9422212 EXTENSION ADDED	
DWG 5-8	EM	REF. C1	L-	L-				
DATE REL 5-9	MB	+ L-	L-	L-				



PART NO.	NAME	REF.	MODELS	SHPG. REF.
3934224	ANTENNA ROD & MAST ASM-FRONT	RPO U63 & U73	ALL	2
3875700	ANTENNA ROD & MAST ASM-FRT (AM/FM)	RPO U69	ALL	2
3926790	FLOOR MAT CHART-FRONT	RPO B37	ALL	2
3927629	FLOOR MAT CHART-REAR	RPO B37	ALL	2
3916432	CAP UNIT-HUB		ALL	2-3
3925800	CAP UNIT-HUB	RPO P28	*	2-3
② 3957060	COVER UNIT-WHEEL TRIM	RPO N95	ALL	2-3
⑥ 3963433	COVER UNIT-WHEEL TRIM	RPO N96	ALL	2-3
⑦ 3963435	COVER UNIT-WHEEL TRIM	RPO PA2	ALL	2-3
3923559	COVER UNIT-WHEEL TRIM	RPO PO1	ALL	2-3
① 3934891	RING UNIT-WHEEL TRIM	RPO P06	*	2
3901702	RING UNIT-WHEEL TRIM	RPO P28	*	2
3901703	RING UNIT-WHEEL TRIM	RPO P28		2
⑤ ③ 3956775	RING UNIT-WHEEL TRIM REF. FLOOR & TOE PAN MAT	RPO P06 & ZJ7	* ALL	2 2-4
⑧ 3972259	COVER UNIT-WHEEL TRIM	RPO P02	*	2-3

2 - Place in luggage compartment.

3 - Place (2) wheel covers & ornaments (Back to back) in bag. Fold over end of bag (1) inch min. Use bag received from vendor for remaining (2) hub caps.

4 - Furnished by Fisher Body within each body.

④ \*See parts list for additional information

CHEVROLET MOTOR DIVISION, GMC		UPC	DATE	SYM	REVISION	RECORD	COUNT	OR	CR
MISCELLANEOUS SHIPPING LIST			0	1	RPO P06 ADDED				
12000			C3	2	WES 3908760 COVER UNIT				
DWG 5-22 FM REF: C1 L- L-				3	3956775 RING UNIT ADDED				
DATE REL 5-23 TOS + L- L- L-				4	PARTS LIST NOTE ADDED				
				5	RPO ZJ7 ADDED				
				6	WES 3903355 COVER UNIT				
				7	WES 3912319 COVER UNIT				
				8	3972259 COVER UNIT ADDED				



GENERAL MOTORS CORPORATION

ASSEMBLY INSTRUCTIONS

3940195

1969 CAMARO 12000 SERIES

PART	USAGE	UPC	SUB.-GRP	
9985164 LUBRICANT-GREASE	1a	TRANS CONTROL LEVER-BALL & FULCRUM	7	A
	1b	BRAKE PEDAL BUSHING, SHAFT OR PINS	5-M35	A
	1c	BRAKE PEDAL HUB	5	A
	1d	REAR CABLE AT EQUALIZER	5	C
	1e	BRUSH LIGHTLY ON O. D. OF PINS & CONN LVR ASSEMBLIES TO PUSH ROD & CYL ASM	5	A
	1f	CLUTCH PEDAL PUSH RODS-BOTH ENDS, PEDAL SHAFT, & PULL BACK SPRING	7	C
	① 1g	BETWEEN SUPPORT & TRANS CONT SHIFTER LEVER RETAINER AT CENTER PIVOT	M11	A
	1h	HEAD LAMP AIMING PADS	12	A
	1j	HOOD BUMPERS AT FENDER OPENING	11-13	A
	1k	HOOD LOCK BOLT	11-13	B
	1m	TRANS CONTROL RODS-BOTH ENDS	M35-M38-M40	A
			④ M11-MC1-M20	A
	1p	TRANS THROTTLE VALVE CONTROL RODS	M35	A
	1r	SHIFTER TANG OF CONTROL LEVER	7	A
1t	CARB BALL STUD BEFORE INSTALLING "SNAP ON" ACCELERATOR CABLE	6	D	
9985158 FLUID-AUTO TRANS	2a	TRANS-THRU FILLER NECK ON RIGHT SIDE	M35-M38-M40	A
9985010 (OPT WITH N40 ONLY)	2b	OIL FILLER TUBE "O" RING SEAL-WET SEAL PRIOR TO INSTALLING FILLER TUBE	M35-M38 M40	A
	③ ② 2c	PROP SHAFT YOKE-TRANS END ON INSIDE & OUTSIDE.	4-M35	A
	2d	BODY DAMPENER & BRACKET	2	A
	2e	HYDRAULIC STEERING PUMP	N40	A

LUBRICATION		UPC	DATE	BY	REVISION	RECORD	AUTH	DR	CK
12000		0	12/22	1	UPC VIES MZO		12/22		
DWG 3-20		D1	1-5-68	2	UPC 4 ADDED		1/10/68		
DATE 1-4-68			1-15-68	3	UPC 4 REMOVED		1/15/68		
REF: Prel.				4	UPC 4, 5, 6, 7, 8, 9, 10, 11, 12, 13		1/15/68		
L- L-									
L- L-									
L- L-									



CHEVROLET **ASSEMBLY INSTRUCTIONS**

3940195

1969 CAMARO 12000 SERIES

PART	USAGE	UPC	SUB.-GRP
9985038 GREASE-CHASSIS	4a  PROP SHAFT YOKE TRANS END ON INSIDE AND OUTSIDE	M38-M40 L48	A
	4b  UPPER CONT ARM BALL STUD ASM 1-FITTING EACH SIDE	3	A
	4c  STEERING RELAY & TIE ROD ASM 7-FITTINGS	9	A
	4d  LOWER CONT ARM BALL STUD ASM 1-FITTING EACH SIDE	3	A
	4e  FUEL PUMP PUSH ROD	6	C
9985133 FLUID-SYN TRANS	5a  TRANS 3-4 SPEED THRU HOLE IN CASE (3)	7-MC1	A
	(2) 5b		
	(1) 5c		
9985044 LUBRICANT-HYPOID	6a  SOAK WASHER FOR BATTERY POS TERMINAL	12	A
	6b  REAR AXLE THRU FILLER PLUG HOLE IN HOUSING	4	A
	6c  TRANS-THRU FILLER PLUG IN HOUSING	M20	A
9985183 OIL-ENG	7a  THRU FILLER HOLE IN VALVE ROCKER CVR	6	B
	7b  OIL FILTER GASKET-DIP GASKET	6	B

CHEVROLET MOTOR DIVISION, GMC				UPC	DATE	SYN	REVISION RECORD	ALTR	DR	CK
LUBRICATION				0	5-5-68	1	545E SC REMOVED	10015	FLM	DP
					12-22	2	USAGE 52 REMOVED	50022	FX	
						3	WFS RPO 11.3	50024	WB	
12000				D2						
DWG 3-20	RE	REF: Prel.	L- L-							
DATE REL. 4-29	DE	+ L-	L- L-							