

## Directions for use of Parts Catalogue

### 1. Applicable model of machines

All component and option parts used for TA545 Tractors are listed in this parts catalogue.

1) : MODEL TYPE

T : 2WD

F : 4WD

S : POWER STEERING + SYNCHROMESH + INDEPENDENT PTO

U : POWER STEERING

C : CABIN

2) : AREA CODE

E15.....FOR TAIWAN

E21.....FOR GERMANY

E41.....FOR U. K

E43.....FOR U. K

E51.....FOR FRANCE

E61.....FOR OCEANIA

### 2. Explanation for head paragraph

KEY	PART CODE	DESCRIPTION	QTY	TYPE OF MODEL					I T C	C O L	G R P	REMARKS
				TF15	TF17	TF19						
126	1614-508-200-00	FILTER(SUCTION) ASSY	1		*					4E		
127	V721-103-103-50	O-RING	1		*							
128	1614-508-260-00	FILTER(SUCTION) ASSY	1		*	981- -1799						
129	1614-508-262-00	FILTER(LH)	1	*	*	*					FIG. 164	
		ASSY	1	*	*	*				4E	A	
			1	*	*	*			3			
						1- -1999						

The diagram shows ten numbered circles (1-10) with lines pointing to specific elements in the table above:

- 1: Points to the 'KEY' column header.
- 2: Points to the 'PART CODE' column header.
- 3: Points to the 'DESCRIPTION' column header.
- 4: Points to the 'QTY' column header.
- 5: Points to the 'TF15' column header.
- 6: Points to the 'TF17' column header.
- 7: Points to the 'I T C' column header.
- 8: Points to the 'C O L' column header.
- 9: Points to the 'G R P' column header.
- 10: Points to the 'REMARKS' column header.

- ① KEY shows the location of parts diagramed in the illustration.
- ② Parts numbers begin with `V` and `W` are standard parts of the market.
- ③ `LH` and `RH` on the parts name are described against the moving direction of the machine or are described on the condition how to install parts on the machines.
- ④ QTY shows the number of parts to be used for one unit of machine.  
 `M` is indicated for parts supplied by a meter long.  
 `ℓ` is indicated for parts supplied by liter.  
 `AR` is indicated for parts need to be adjusted or regulated.
- ⑤ The following symbol classifies parts to be used for machines.  
 `\*` means standard parts.  
 `T` shows that the parts can be installed as optional parts.  
 `R` shows that the parts can be used as applicable parts to replace originally equipped parts.
- ⑥ Serial number : upper row shows the serial number for the first product and lower row for the last product.  
 Example : Serial no. 1 through to serial no. 1999.
- ⑦ ITC : Interchangeability  
 `1` ...OLD ← NEW  
 New parts can be used in place of the old parts.  
 `2` ...OLD → NEW  
 Old parts can be used in place of the new parts.  
 `3` ...OLD —×— NEW  
 Old parts and new parts can not be replaced each other.
- ⑧ COL : Color code  
 Color is signified with color code number for colored parts.  
 Please see the color list shown in the next page.
- ⑨ GRP : Parts shown in this column can be replaced by SET parts.  
 Exsample : Parts marked Ⓐ can be replaced by parts marked Ⓑ, and Ⓓ for Ⓒ, so the rest follow in the same alphabetical order.
- ⑩ Remarks  
 \* Other maker's part code number is shown in this column.  
 \* When Fig. No. is shown in the Remark column of SET parts or ASSY parts, each of their component parts are listed in said Fig. No.

### 3. Color :

The following colors are used for color parts.

COLOR CODE	COLOR	SPRAY TYPE CODE NUMBER	PAINTS 4K DRUM	PAINTS 16K DRUM
4 G	CRYSTAL BLUE	1300-957-001-10	1300-957-003-00	1300-957-004-00
5 I	SUNSET GRAY	1300-959-001-10	1300-959-003-00	1300-959-004-00
6 G	SUMMER WHITE	1300-958-001-10	1300-958-003-00	1300-958-004-00
7 F	MIRROR BLACK	1300-954-001-10	1300-954-003-00	1300-954-004-00

NOTE : Color code is signified only for the parts assigned by the maker as color parts.

### 4. Serial Numbers :

1) For engines serial number is stamped on CYLINDER BLOCK ASSY.

Please see Fig.No.5 - 1

2) For chassies serial number is shown on the LABEL.

Please see



### 5. Parts Order

1) Parts numbers listed in the parts catalogue are all registered in "ISEKI on-line computer".

2) When you order parts, please make sure of correct numbers.

3) When substitute parts is available, the part number ordered will be automatically turned to a new part number.

4) Please be sure to use "ISEKI GENUINE PARTS".

Any other similar parts other than ISEKI parts when used may cause a trouble that makes us unable to repair or guarantee the warrant.

P. 1 \*\*\* STRUCTURE TABLE OF MODEL \*\*\*

M O D E L F I G	T A 5FFFF 4SSSS 5BBBB EEEE 2445 1131 GG	FFFFF SSSSS CCEEE DE445 E6111 61 P 1	FFFTT SSXSS EERCC 66EDE 111E6 N561 1	T S E 6 1						
1	****	*****	*****	*						
2		** *	*****	*						
3	****	* *								
4	****	* *								
5			*							
6	****	*****	*****	*						
7	****	*** *	*****	*						
8		*								
9	TTTT	TTT T	TT TT	T						
10		***	**	*						
11	****									
12			*							
13		**	**							
14	****	*****	** **	*						
15	****	*****	*****	*						
16	****	*****	*****	*						
17			*							
18	****	*****	** **	*						
19	****	*****	*****	*						
20	TTT	TTT T	TTTT	T						
21	T									
22	TTTT	TTT T	TT TT	T						
23	****	*****	*****	*						
24	****	*****	** **	*						
25			*							
26	****	*****	*****	*						
27	****	*****	*****	*						
28	****	*****	*****	*						
29	****	*****	*****	*						
30	****	*****	*****	*						
31	*									
32	****	*****	*****	*						
33	****	*****	*****	*						
34	****	*****	*****	*						
35	****	*****	***							
36			*							
37	****	*****	** **	*						
38	TTTT	TTTT	TTTT	T						
39	****	*****	** **	*						
40			*							
41	****	*****	*****	*						
42	****	*****	*****	*						
43	****	*****	** **	*						
44			*							
45	****	*****	*****	*						

P. 2 \*\*\* STRUCTURE TABLE OF MODEL \*\*\*

M O D E L F I G	T A									
	5FFFF 4SSSS 5BBBB EEEE 2445 1131 GG	FFFFF SSSSS CCEEE DE445 E6111 61 P 1	FFFTT SSXSS EERCC 66EDE 111E6 N561 1	T S E 6 1						
46	****	*****	*****	*						
47	****	*****	*****	*						
48	****	*****	*****	*						
49	****	*****	*****	*						
50	****	*****	*****	*						
51	*									
52	****	*****	*****	*						
53	** *	*****	*****	*						
54	****	*****	*****	*						
55	****	*****	*****	*						
56	****	*****	*****	*						
57	****	*****	*****	*						
58			**	*						
59			**	*						
60			**	*						
61	****	*****	***							
62	****	*****	***							
63	****	*****	**							
64			*							
65	****	*****	***							
66	****	*****	***							
67	****	*****	***							
68	****	*****	*							
69			*							
70			*							
71	****	*** *	** **	*						
72		*								
73			*							
74	****	*****	*****	*						
75	****	*****	*****	*						
76	****	*****	*****	*						
77	****	*****	** **	*						
78	****	*****	*****	*						
79	****	*****	** **	*						
80	****	*** *	** **	*						
81		*								
82			*							
83			*							
84	****	*****	*****	*						
85	****	*****	*****	*						
86	TTTT	TTT T	TT TT	T						
87	TTTT	**T*T	** **	*						
88	****	*****	** **	*						
89			*							
90	****	*** *	** **	*						

M O D E L F I G	T A									
	5FFFF	FFFFF	FFFTT	T						
	4SSSS	SSSSS	SSXSS	S						
	5BBBB	CEEEE	EERCC	E						
	EEEE	DE445	66EDE	6						
	2445	E6111	111E6	1						
	1131	61 P	N561							
	GG	1	1							
91			*							
92	****	*****	** **	*						
93			*							
94	TTTT	**T T	** **	*						
95	T**T	T T	T	T						
96		TT	TT TT	T						
97		**	** **	*						
98	TT	*								
99			*							
100			*							
101			*							
102			*							
103	****	*****	*****	*						
104	****	*****	*****	*						
105	****	*****	*****	*						
106	****	*****	*****	*						
107	****	*****	** **	*						
108			*							
109		* *	**	*						
110			*							
111	***	**	**							
112	*									
113		*								
114	****	*****	*****	*						
115	****	*****	** **	*						
116			*							
117		**	**	*						
118	****	**	***							
119		**	***							
120		**	**	*						
121	****									
122		**	**	*						
123	****									
124			*							
125		**	**							
126			*							
127	****	*****	*****	*						
128	****	*****	*****	*						
129		**	** **	*						
130	****	**								
131		*	*							
132			*							
133	****	**								
134		**	** **	*						
135			*							

M O D E L F I G	T A			T S E 6 1					
136		**	** ** *	*					
137			*						
138	*****	***							
139	*****	*****	*****	*					
140	*****	***							
141		**	** ** *	*					
142			*						
143	*****								
144	*****								
145		**	**						
146		**	**						
147		TT	TT						
148		TT	TT						
149		TT	TT						
150	*****	*****	** ** *	*					
151	*****	*****	*****	*					
152		**	**						
153	*****	**	***						
154		**	***						
155		**	***						
156	*****	**	***						
157		**	**						
158			*						
159			*						
160		*	*						
161		*	*						
162	*****	**	**						
163		**	**						
164		**	**						
165		**	**						
166		**	**						
167		**	**						
168		*	*						
169		*	*						
170		*	*						
171		*	*						
172		*	*						
173		*	*						
174		*	*						
175	*****	*****	*****	*					
176	*****	*****	*****	*					
177	*****	*****	*****	*					
178	TTTT	TTT T	TT TT	T					
179	*****	*** *	** ** *	*					
180		*	*						





# CONTENTS

T A 5 4 5

ENGINE (4JA1 - PB,PB01)

CYLINDER HEAD AND OTHER PARTS .....	Fig. 1
CYLINDER BLOCK AND OTHER PARTS .....	Fig. 2
TIMING GEAR CASE AND OTHER PARTS .....	Fig. 3
OIL PAN AND OTHER PARTS .....	Fig. 4
OIL PUMP AND FIXING PARTS .....	Fig. 5
CRAN KSHAFT PISTON CONN. ROD AND FLYWHEEL .....	Fig. 6
VALVE MECHANISM .....	Fig. 7
OIL FILTER AND FUEL FILTER .....	Fig. 8
OIL PIPE AND OTHER PARTS .....	Fig. 9
COOLING SYSTEM (FAN, WATER AND OIL) .....	Fig. 10
AIR INTAKE AND EXHAUST SYSTEM .....	Fig. 11
FUEL SYSTEM .....	Fig. 12
ENGINE FOOT, HANGER AND FIXING PARTS .....	Fig. 13
INJECTION PUMP AND OTHER PARTS .....	Fig. 14
ELECTRICAL PARTS .....	Fig. 15
COMPONENT PARTS FOR $\begin{matrix} 6894 - 476 - 121 - 10 \\ 6897 - 030 - 187 - 00 \end{matrix}$ ON Fig.14 .....	Fig. 16
COMPONENT PARTS FOR $\begin{matrix} 6894 - 319 - 381 - 00 \\ 6897 - 037 - 237 - 00 \end{matrix}$ ON Fig.14 .....	Fig. 17
COMPONENT PARTS FOR 6894 - 122 - 262 - 50 ON Fig.12 .....	Fig. 18
COMPONENT PARTS FOR 6894 - 178 - 843 - 00 ON Fig.14 .....	Fig. 19
COMPONENT PARTS FOR 6894 - 171 - 296 - 30 ON Fig.15 .....	Fig. 20
COMPONENT PARTS FOR 6894 - 338 - 096 - 00 ON Fig.15 .....	Fig. 21
REPAIR KIT PARTS FOR 6587 - 810 - 736 - 60 .....	Fig. 22

# CONTENTS

## CHASSIS

FUEL FILTER AND FUEL HOSE SYSTEM .....	Fig. 1
AIR CLEANER SYSTEM (E61,E41P,E15 TYPE) .....	Fig. 2
AIR CLEANER SYSTEM (EXCEPT E61,E41P,E15 TYPE) (F - No.1~408) .....	Fig. 3
AIR CLEANER SYSTEM (EXCEPT E61,E41P,E15 TYPE) (F - No.409~) .....	Fig. 4
PRE CLEANER SYSTEM (E15 TYPE) .....	Fig. 5
RADIATOR SYSTEM .....	Fig. 6
MUFFLER SYSTEM (EXCEPT E41P TYPE) .....	Fig. 7
MUFFLER SYSTEM (E41P TYPE) .....	Fig. 8
MUFFLER SYSTEM (EXCEPT E41P,E15 TYPE) (OPTION) .....	Fig. 9
FUEL TANK SYSTEM (EXCEPT B,C,E15 TYPE) .....	Fig. 10
FUEL TANK SYSTEM (B TYPE) .....	Fig. 11
FUEL TANK SYSTEM (E15 TYPE) .....	Fig. 12
FUEL TANK SYSTEM (C TYPE) .....	Fig. 13
SUB FUEL TANK SYSTEM (EXCEPT E15 TYPE) .....	Fig. 14
BATTERY BRACKET SYSTEM .....	Fig. 15
ACCELERATOR SYSTEM .....	Fig. 16
CLUTCH AND INPUT METAL SYSTEM (E15 TYPE) .....	Fig. 17
CLUTCH AND INPUT METAL SYSTEM (EXCEPT E15 TYPE) .....	Fig. 18
CLUTCH PEDAL SYSTEM .....	Fig. 19
FRONT P.T.O. SET (EXCEPT E21,E41P TYPE) (OPTION) .....	Fig. 20
FRONT P.T.O. SET (E21 TYPE) (OPTION) .....	Fig. 21
FRONT THREE POINT LINK SET (EXCEPT E41P,E15 TYPE) (OPTION) .....	Fig. 22
FRONT TRANSMISSION CASE SYSTEM .....	Fig. 23
INPUT GEAR AND CHANGE GEAR SYSTEM (EXCEPT E15 TYPE) .....	Fig. 24
INPUT GEAR AND CHANGE GEAR SYSTEM (E15 TYPE) .....	Fig. 25
REVERSE CHANGE GEAR SYSTEM .....	Fig. 26
P.T.O. DRIVE SHAFT SYSTEM .....	Fig. 27
MAIN CHANGE SYSTEM .....	Fig. 28
REVERSE CHANGE SYSTEM .....	Fig. 29
TRANSMISSION CASE (SPACER) SYSTEM .....	Fig. 30

TRANSMISSION CASE (SPACER) SYSTEM (E21 TYPE) .....	Fig. 31
REAR TRANSMISSION CASE SYSTEM .....	Fig. 32
SUB CHANGE GEAR SYSTEM .....	Fig. 33
SUB SHIFT SYSTEM .....	Fig. 34
4WD DRIVE GEAR SYSTEM (F TYPE) .....	Fig. 35
P.T.O. COUNTER GEAR AND P.T.O. CHANGE GEAR SYSTEM (E15 TYPE) ....	Fig. 36
P.T.O. COUNTER GEAR AND P.T.O. CHANGE GEAR SYSTEM (EXCEPT E15 TYPE) .....	Fig. 37
MID P.T.O. SET (OPTION) .....	Fig. 38
P.T.O. SHIFT SYSTEM (EXCEPT E15 TYPE) .....	Fig. 39
P.T.O. SHIFT SYSTEM (E15 TYPE) .....	Fig. 40
SUB SHIFT LEVER SYSTEM .....	Fig. 41
REVERSE LEVER SYSTEM .....	Fig. 42
P.T.O. LEVER AND 4WD LEVER SYSTEM (EXCEPT E15 TYPE) .....	Fig. 43
P.T.O. LEVER AND 4WD LEVER SYSTEM (E15 TYPE) .....	Fig. 44
MAIN SHIFT LEVER SYSTEM .....	Fig. 45
DIFFERENTIAL CASE SYSTEM .....	Fig. 46
REAR AXLE HOUSING SYSTEM .....	Fig. 47
WHEEL SHAFT SYSTEM .....	Fig. 48
BRAKE SYSTEM .....	Fig. 49
BRAKE ROD SYSTEM .....	Fig. 50
PARKING BRAKE SYSTEM (E21 TYPE) .....	Fig. 51
BRAKE PEDAL SYSTEM .....	Fig. 52
REAR WHEEL SYSTEM (EXCEPT E43G TYPE) .....	Fig. 53
STEERING WHEEL SYSTEM .....	Fig. 54
POWER STEERING ASSY .....	Fig. 55
OIL TANK SYSTEM .....	Fig. 56
AXLE BRACKET SYSTEM .....	Fig. 57
FRONT AXLE SYSTEM (1) (T TYPE) .....	Fig. 58
FRONT AXLE SYSTEM (2) (T TYPE) .....	Fig. 59
FRONT WHEEL SYSTEM (T TYPE) .....	Fig. 60
FRONT DRIVE SHAFT SYSTEM (F TYPE) .....	Fig. 61
FRONT DIFFERENTIAL CASE SYSTEM (F TYPE) .....	Fig. 62
AXLE HOUSING SYSTEM (F TYPE EXCEPT E15) .....	Fig. 63

AXLE HOUSING SYSTEM (E15 TYPE) .....	Fig. 64
FRONT GEAR CASE SYSTEM (1)(F TYPE) .....	Fig. 65
FRONT GEAR CASE SYSTEM (2)(F TYPE) .....	Fig. 66
KNUCKLE ARM AND TIE ROD SYSTEM (F TYPE) .....	Fig. 67
FRONT WHEEL SYSTEM (F TYPE EXCEPT E61N,E15) .....	Fig. 68
FRONT WHEEL SYSTEM (FE15 TYPE) .....	Fig. 69
FRONT WHEEL SYSTEM (FE61N TYPE) .....	Fig. 70
CYLINDER CASE SYSTEM (EXCEPT E41P,E15 TYPE) .....	Fig. 71
CYLINDER CASE SYSTEM (E41P TYPE) .....	Fig. 72
CYLINDER CASE SYSTEM (E15 TYPE) .....	Fig. 73
LIFT ARM AND RELIEF VALVE SYSTEM .....	Fig. 74
CYLINDER SYSTEM .....	Fig. 75
POSITION LINK SYSTEM .....	Fig. 76
DRAFT LINK SYSTEM (EXCEPT E15 TYPE) .....	Fig. 77
POSITION LEVER SYSTEM .....	Fig. 78
DRAFT LEVER SYSTEM (EXCEPT E15 TYPE) .....	Fig. 79
HYDRAULIC PIPING SYSTEM (1)(EXCEPT E41P,E15 TYPE) .....	Fig. 80
HYDRAULIC PIPING SYSTEM (1)(E41P TYPE) .....	Fig. 81
HYDRAULIC PIPING SYSTEM (1)(E15 TYPE) .....	Fig. 82
HYDRAULIC PIPING SYSTEM (2)(E15 TYPE) .....	Fig. 83
HYDRAULIC PIPING SYSTEM (3) .....	Fig. 84
STACK SYSTEM .....	Fig. 85
TRAILER HITCH SYSTEM (EXCEPT E41P,E15 TYPE)(OPTION) .....	Fig. 86
SWING DRAW – BAR SYSTEM	
(E61,E41P TYPE – STANDARD/B,SE41,SE51 TYPE – OPTION) .....	Fig. 87
SHIELD COVER SYSTEM (EXCEPT E15 TYPE) .....	Fig. 88
TRAILER HITCH AND REAR HITCH SYSTEM (E15 TYPE) .....	Fig. 89
THREE POINT LINK SYSTEM (EXCEPT E41P,E15 TYPE) .....	Fig. 90
THREE POINT LINK SYSTEM (E15 TYPE) .....	Fig. 91
LOWER LINK AND LIFT ROD SYSTEM (EXCEPT E15 TYPE) .....	Fig. 92
LOWER LINK AND LIFT ROD SYSTEM (E15 TYPE) .....	Fig. 93
VALVE (REMOTE/1) SET	
(E61 TYPE – STANDARD/B,SE41,SE51 TYPE – OPTION) .....	Fig. 94

VALVE (REMOTE/2) SET	
(E41G,E43G TYPE – STANDARD/E21,E51,SE41,SE61 TYPE – OPTION)	..... Fig. 95
VALVE (REMOTE/2) SET (E61 TYPE) (OPTION)	..... Fig. 96
VALVE (REMOTE/1) SET (E61 TYPE) (T – No.1~43 • F – No.1~335)	..... Fig. 97
VALVE (REMOTE/2) SET	
(SE41P TYPE – STANDARD/E41G,E43G TYPE – OPTION)	..... Fig. 98
AUTO LINK SYSTEM (E15 TYPE)	..... Fig. 99
RADARMATIC SYSTEM (1) (E15 TYPE)	..... Fig. 100
RADARMATIC SYSTEM (2) (E15 TYPE)	..... Fig. 101
RADARMATIC SYSTEM (3) (E15 TYPE)	..... Fig. 102
BONNET SYSTEM (1)	..... Fig. 103
BONNET SYSTEM (2)	..... Fig. 104
GRILLE SYSTEM	..... Fig. 105
HOOD FRAME SYSTEM	..... Fig. 106
FAN COVER SYSTEM (EXCEPT E15 TYPE)	..... Fig. 107
FAN COVER SYSTEM (E15 TYPE)	..... Fig. 108
FENDER SYSTEM (EXCEPT B,C,E41P,E15 TYPE)	..... Fig. 109
FENDER SYSTEM (E15 TYPE)	..... Fig. 110
FENDER SYSTEM (B,C TYPE EXCEPT E21)	..... Fig. 111
FENDER SYSTEM (E21 TYPE)	..... Fig. 112
FENDER SYSTEM (E41P TYPE)	..... Fig. 113
LEVER GUIDE SYSTEM	..... Fig. 114
SEAT SYSTEM (EXCEPT E15 TYPE)	..... Fig. 115
SEAT SYSTEM (E15 TYPE)	..... Fig. 116
FRONT MOUNT BRACKET SYSTEM (EXCEPT B,C,E15 TYPE)	..... Fig. 117
FRONT MOUNT BRACKET SYSTEM (B,C,E15 TYPE)	..... Fig. 118
REAR MOUNT BRACKET SYSTEM (C,E15 TYPE)	..... Fig. 119
REAR MOUNT BRACKET SYSTEM (EXCEPT B,C,E15 TYPE)	..... Fig. 120
REAR MOUNT BRACKET SYSTEM (B TYPE)	..... Fig. 121
DASH PANEL AND FLOOR PANEL SYSTEM (EXCEPT B,C,E15 TYPE)	..... Fig. 122
DASH PANEL AND FLOOR PANEL SYSTEM (B TYPE)	..... Fig. 123
DASH PANEL AND FLOOR PANEL SYSTEM (E15 TYPE)	..... Fig. 124
DASH PANEL AND FLOOR PANEL SYSTEM (C TYPE)	..... Fig. 125
FOOT COVER SYSTEM (E15 TYPE)	..... Fig. 126

BATTERY SYSTEM .....	Fig. 127
LAMP SYSTEM .....	Fig. 128
LAMP SYSTEM (E61 TYPE) .....	Fig. 129
LAMP SYSTEM (EXCEPT E61,E15 TYPE) .....	Fig. 130
LAMP SYSTEM (E41P,E15 TYPE) .....	Fig. 131
LAMP SYSTEM (E15 TYPE) .....	Fig. 132
INSTRUMENT PANEL SYSTEM (EXCEPT E61,E15 TYPE) .....	Fig. 133
INSTRUMENT PANEL SYSTEM (E61 TYPE) .....	Fig. 134
INSTRUMENT PANEL SYSTEM (E15 TYPE) .....	Fig. 135
SWITCH SYSTEM (E61 TYPE) .....	Fig. 136
SWITCH SYSTEM (E15 TYPE) .....	Fig. 137
SWITCH SYSTEM (EXCEPT E61,E15 TYPE) .....	Fig. 138
SWITCH SYSTEM .....	Fig. 139
HARNESS SYSTEM (EXCEPT E61,E15 TYPE) .....	Fig. 140
HARNESS SYSTEM (E61 TYPE) .....	Fig. 141
HARNESS SYSTEM (E15 TYPE) .....	Fig. 142
ELECTRICAL SYSTEM (1) (B TYPE) .....	Fig. 143
ELECTRICAL SYSTEM (2) (B TYPE) .....	Fig. 144
ELECTRICAL SYSTEM (3) (C TYPE) .....	Fig. 145
ELECTRICAL SYSTEM (4) (C TYPE) .....	Fig. 146
ELECTRICAL SYSTEM (5) (C TYPE) (OPTION) .....	Fig. 147
ELECTRICAL SYSTEM (6) (C TYPE) (OPTION) .....	Fig. 148
ELECTRICAL SYSTEM (7) (C TYPE) (OPTION) .....	Fig. 149
ELECTRICAL SYSTEM (8) (EXCEPT E15 TYPE) .....	Fig. 150
REAR VIEW MIRROR SYSTEM .....	Fig. 151
FRONT FRAME SYSTEM (C TYPE) (T - No.1~53 • F - No.1~408) .....	Fig. 152
FRONT FRAME SYSTEM (B,C,E15 TYPE) (T - No.54~ • F - No.409~) .....	Fig. 153
FRAME SYSTEM (C,E15 TYPE) (T - No.1~53 • F - No.1~408) .....	Fig. 154
REAR FRAME SYSTEM (C,E15 TYPE) (T - No.54~ • F - No.409~) .....	Fig. 155
SUB FENDER SYSTEM (B,C,E15 TYPE) .....	Fig. 156
ROOF SYSTEM (C TYPE) .....	Fig. 157
ROOF SYSTEM (E15 TYPE) (F - No.1~408) .....	Fig. 158
ROOF SYSTEM (E15 TYPE) (F - No.409~) .....	Fig. 159
ROOF SYSTEM (D TYPE) (T - No.1~53 • F - No.1~408) .....	Fig. 160

ROOF SYSTEM (D TYPE) (T - 54~ · F - 409~)	Fig. 161
FRONT GLASS SYSTEM (B,C TYPE)	Fig. 162
DOOR SYSTEM (C TYPE) (T - No.1~53 · F - No.1~408)	Fig. 163
DOOR SYSTEM (C TYPE) (T - No.54~ · F - No.409~)	Fig. 164
DOOR GLASS SYSTEM (C TYPE)	Fig. 165
REAR GLASS SYSTEM (C TYPE)	Fig. 166
INTERIOR AND COCKPIT SYSTEM (C TYPE)	Fig. 167
HEATER SYSTEM (SCE61 TYPE)	Fig. 168
HEATER SYSTEM (D TYPE) (T - No.1~52 · F - No.1~391)	Fig. 169
HEATER SYSTEM (D TYPE) (T - No.53~ · F - No.392~)	Fig. 170
COOLER SYSTEM (D TYPE) (T - No.1~52 · F - No.1~391)	Fig. 171
COOLER SYSTEM (D TYPE) (T - No.53~ · F - No.392~)	Fig. 172
COMPRESSOR BRACKET SYSTEM (1) (D TYPE)	Fig. 173
COMPRESSOR BRACKET SYSTEM (2) (D TYPE)	Fig. 174
MARK (1)	Fig. 175
MARK (2)	Fig. 176
TOOLS	Fig. 177
COMPONENT PARTS FOR K185-020-000-00 ON Fig.22	Fig. 178
COMPONENT PARTS FOR K211-009-000-00, 10 ON Fig.75	Fig. 179
COMPONENT PARTS FOR K211-013-000-00, 10 ON Fig.75	Fig. 180
COMPONENT PARTS FOR K211-005-000-10 ON Fig.94~98	Fig. 181
COMPONENT PARTS FOR 1564-519-200-20 ON Fig.100 (F - No.1~138)	Fig. 182
COMPONENT PARTS FOR K221-002-000-00 ON Fig.100 (F - No.1~138)	Fig. 183
COMPONENT PARTS FOR K200-020-000-00 ON Fig.100 (F - No.139~)	Fig. 184
COMPONENT PARTS FOR K185-006-000-00, 10 ON Fig.100	Fig. 185

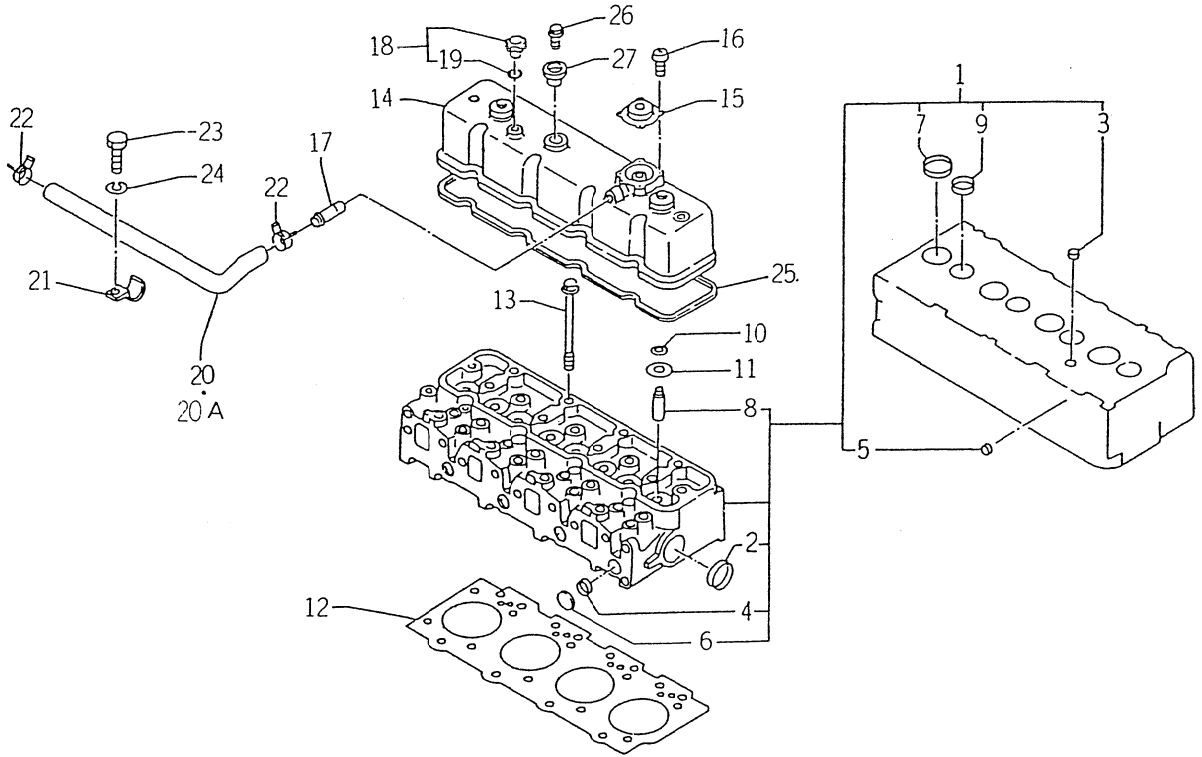
# ENGINE

4JA1 – PB...TA545

4JA1 – PB01...TA545FX



FIG. 1 CYLINDER HEAD AND OTHER PARTS

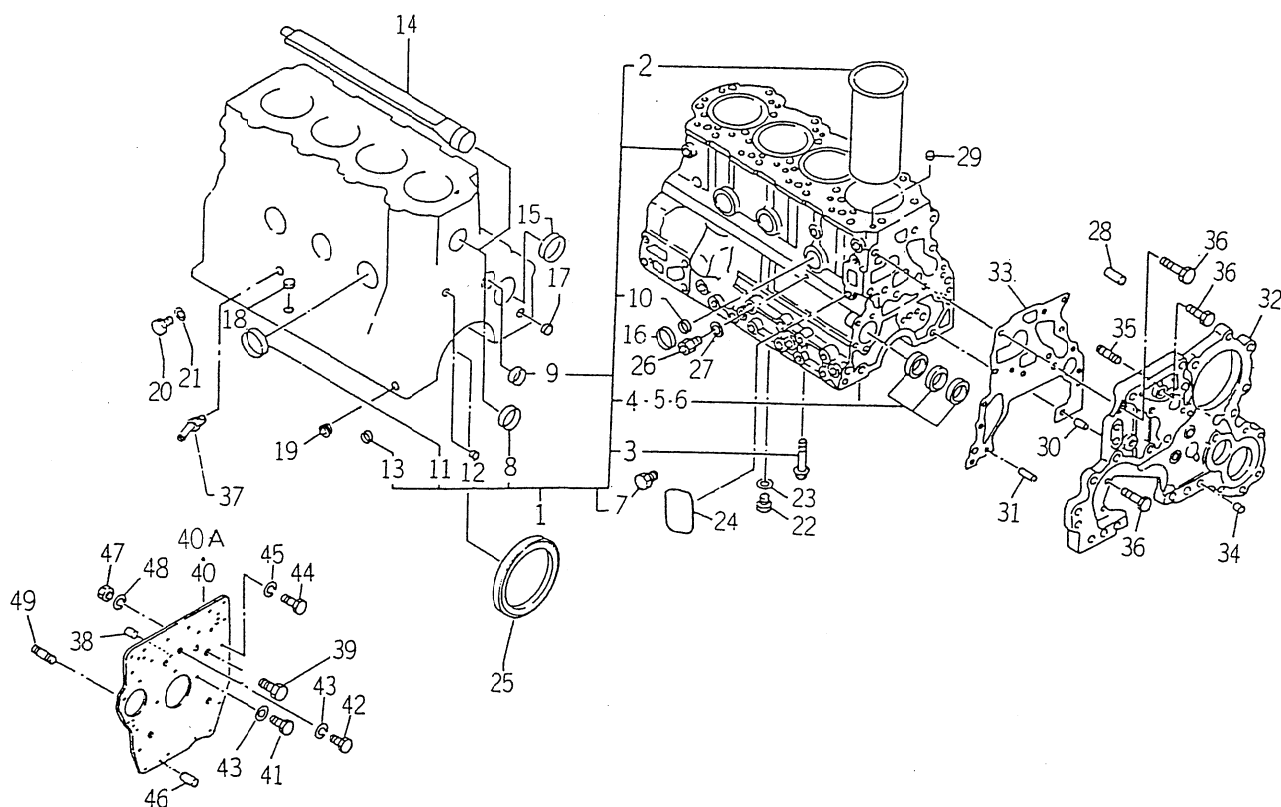


I569-1100

KEY	PART CODE	DESCRIPTION	QTY	TYPE OF MODEL		I T C	C O L	G R P	REMARKS
				4JA1 PB	4JA1 PB01				
1	6894 - 431 - 523 - 00	HEAD,CYLINDER ASSY	1	*	*				
2	6109 - 600 - 005 - 10	CUP,SEALING	1	*	*				
3	6511 - 129 - 006 - 00	SEALING,CAP	3	*	*				
4	6109 - 600 - 011 - 20	CUP,SEALING	7	*	*				
5	6509 - 600 - 013 - 00	CAP,SEALING	5	*	*				
6	6511 - 219 - 015 - 00	CUP,SEALING	2	*	*				
7	6894 - 130 - 558 - 00	SEAT,VALVE	4	*	*				
8	6511 - 721 - 016 - 00	GUIDE,VALVE	8	*	*				
9	6894 - 130 - 559 - 00	SEAT,INSERT VALVE	4	*	*				
10	6512 - 569 - 006 - 00	SEAL,VALVE	8	*	*				
11	6512 - 563 - 001 - 00	SEAT,SPRING	8	*	*				
12	6894 - 332 - 327 - 00	GASKET,CYLINDER HEAD	1	*	*				
13	6894 - 247 - 355 - 10	BOLT	18	*	*				
14	6894 - 476 - 696 - 00	COVER,CYLINDER HEAD	1	*	*				
15	6894 - 250 - 172 - 00	VENTILATOR	1	*	*				
16	6903 - 910 - 408 - 00	SCREW	4	*	*				
17	6894 - 250 - 615 - 10	PIPE,BREATHER	1	*	*				
18	6894 - 133 - 207 - 50	CAP,OIL FILLER	1	*	*				
19	6894 - 123 - 623 - 10	PACKING,OIL CAP	1	*	*				
20	6894 - 129 - 381 - 10	HOSE,RUBBER	1	**9306	**9306				
20A	6897 - 031 - 729 - 00	HOSE,RUBBER	1	**9307-	**9307-				
21	6894 - 142 - 941 - 00	CLIP,HOSE	1	*	*				
22	6894 - 121 - 113 - 00	CLIP,HOSE	2	*	*				
23	6020 - 800 - 814 - 00	BOLT,CLIP	1	*	*				
24	6909 - 150 - 508 - 00	WASHER	1	*	*				



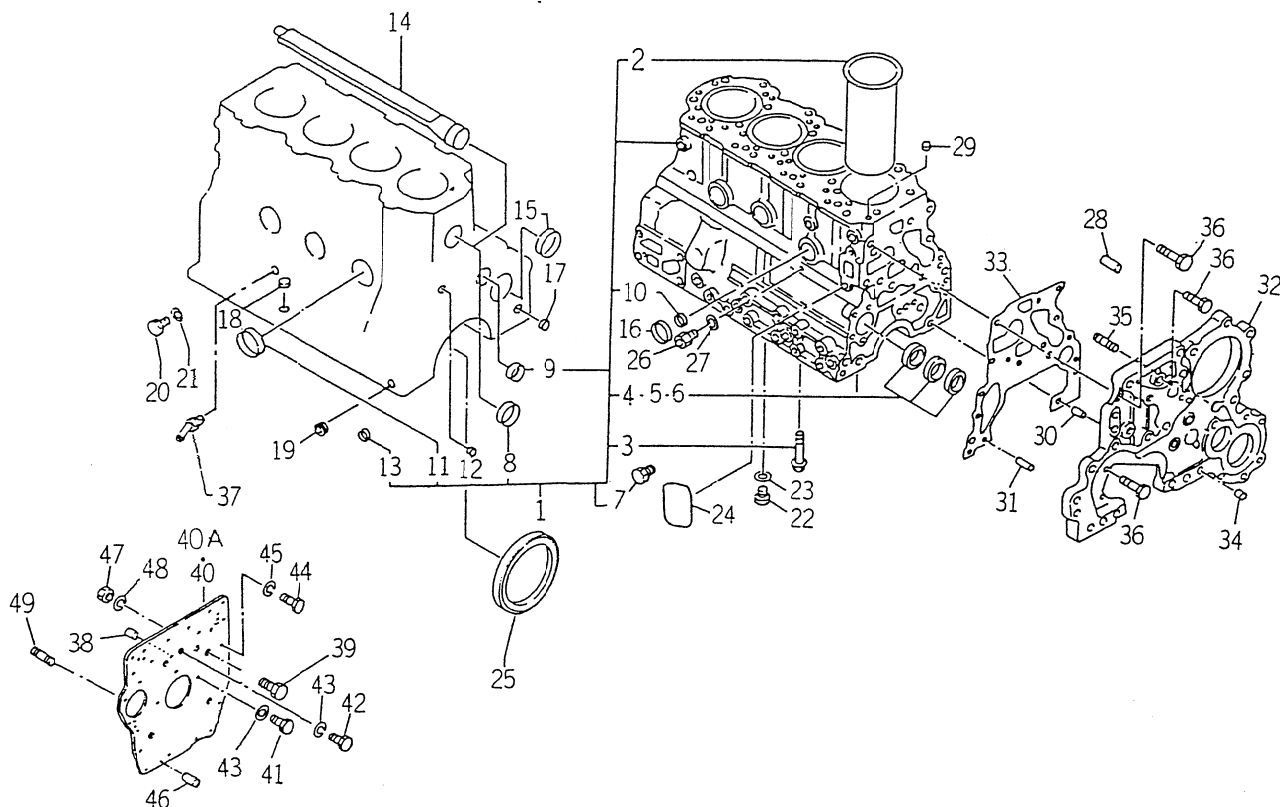
FIG. 2 CYLINDER BLOCK AND OTHER PARTS



1565-1200

KEY	PART CODE	DESCRIPTION	QTY	TYPE OF MODEL		I T C	C O L	G R P	REMARKS
				4JA1 PB	4JA1 PBO1				
1	6894 - 438 - 404 - 40	CYLINDER BLOCK ASSY	1	*	*				
2	6894 - 462 - 130 - 00	LINER,CYL	4	*	*				
3	6894 - 432 - 642 - 00	BOLT	10	*	*				
4	6894 - 427 - 196 - 10	METAL KIT STD	1	*	*				
5	6894 - 427 - 198 - 10	METAL KIT UN = 0.5	1	R	R				
6	6894 - 427 - 200 - 10	METAL KIT UN = 1.00	1	R	R				
7	6909 - 664 - 001 - 00	PLUG WATER DRAIN 1/4	1	*	*				
8	6511 - 219 - 018 - 00	CUP,SEARING	1	*	*				
9	6511 - 219 - 017 - 00	CUP CYL	1	*	*				
10	6511 - 219 - 008 - 00	CUP,SEALING	3	*	*				
11	6109 - 600 - 005 - 10	CUP,SEALING	3	*	*				
12	6509 - 600 - 013 - 00	CAP,SEALING	1	*	*				
13	6511 - 219 - 015 - 00	CUP,SEALING	2	*	*				
14	6894 - 471 - 358 - 00	DUCT,WATER	1	*	*				
15	6894 - 250 - 514 - 00	CUP,SEALING	1	*	*				
16	6511 - 219 - 018 - 00	CUP,SEARING	3	*	*				
17	6511 - 129 - 006 - 00	SEALING,CAP	2	*	*				
18	6511 - 129 - 003 - 00	GAUGE,LEVEL	1	*	*				
19	6509 - 605 - 019 - 20	PLUG,TAPPER	2	*	*				
20	6999 - 202 - 314 - 00	PLUG	1	*	*				
21	6909 - 571 - 414 - 00	GASKET	1	*	*				
22	6999 - 202 - 316 - 00	PLUG	2	*	*				
23	6909 - 571 - 416 - 00	PACKING	2	*	*				
24	6897 - 016 - 473 - 00	COVER	1	*	*				
25	6894 - 235 - 369 - 00	SEAL,OIL	1	*	*				

FIG. 2 CYLINDER BLOCK AND OTHER PARTS



1569-1200

KEY	PART CODE	DESCRIPTION	QTY	TYPE OF MODEL		I T C	C O L	G R P	REMARKS
				4JA1 PB	4JA1 PB01				
26	6894 - 130 - 021 - 10	NIPPLE,INJ.PUMP	1	*	*				
27	6909 - 572 - 008 - 00	PACKING	1	*	*				
28	6909 - 878 - 597 - 00	PIN,CYL.BODY	2	*	*				
29	6894 - 453 - 344 - 00	DOWEL	2	*	*				
30	6908 - 151 - 020 - 00	PIN	1	*	*				
31	6908 - 151 - 050 - 00	PIN	1	*	*				
32	6894 - 170 - 108 - 50	PLATE	1	*	*				
33	6894 - 365 - 670 - 00	PACKING	1	*	*				
34	6911 - 229 - 058 - 00	DOWEL	1	*	*				
35	6509 - 300 - 062 - 00	STUD,CASE COVER/L = 68	1	*	*				
36	6050 - 040 - 870 - 00	BOLT L = 70	7	*	*				
37	6513 - 721 - 043 - 10	PIPE,WATER DRAIN	1	*	*				
38	6908 - 161 - 032 - 00	PIN,STRAIGHT	1	*	*				
39	6909 - 606 - 535 - 00	BOLT/L = 43	1	*	*				
40	6894 - 170 - 107 - 30	PLATE,REAR	1	**9005	**9005				
40A	6897 - 028 - 906 - 00	PLATE,REAR	1	**9006-	**9006-				
41	6894 - 175 - 276 - 00	BOLT L = 25	3	*	*				
42	6902 - 061 - 030 - 00	BOLT,REAR PLATE FIX	3	*	*				
43	6909 - 150 - 810 - 00	WSHER ; SPR.	3	*	*				
44	6902 - 361 - 236 - 00	BOLT	2	*	*				
45	6909 - 150 - 812 - 00	WASHER,SPRING	5	*	*				
46	6908 - 161 - 022 - 00	PIN,STRAIGHT	2	*	*				
47	6909 - 110 - 410 - 00	NUT/M10	1	*	*				
48	6909 - 150 - 510 - 00	WASHER,SP/M10	1	*	*				
49	6894 - 411 - 001 - 00	STUD L1 = 40	2	*	*				