
325C 325C L Track-Type Excavators

Powered by 3126 Engine

SERIAL NUMBER

**BKH1 To Last Built(Vehicle)
BKT1 To Last Built(Vehicle)
BLA1 To Last Built(Vehicle)
BLX1 To Last Built(Vehicle)
5GG00194 To Last Installed(Engine)**

HOW TO USE THE PARTS MANUAL

Caterpillar Parts Manuals include illustrations of the groups or assemblies which make up the machine. These illustrations show the standard components plus many of the attachments available for the machine.

The alphabetical index located in the front part of the book should be used to determine the page number on which specific illustrations are shown. Reference to those pages will identify each of the individual serviceable parts.

Captions

The caption under each illustration identifies the part number and name of the group or assembly shown. If more than one illustration is included for any group, the caption identifies the specific machine serial numbers to which each illustration applies. In some cases it is not possible to determine the specific machine serial numbers to which different illustrations are applicable. In those cases the caption identifies the illustration as "First Type", "Second Type", etc. Reference to the actual group or assembly is necessary in those cases to determine which illustration should be used.

Captions provide additional information such as page numbers where illustrations of sub assemblies are shown, information regarding quantities used and other information intended to assist the user in determining parts needs.

This information indicates the effective serial number or effective date on which changes became effective.

Example :

D95.05- : Applicable on and after May 1995

↑
—— D indicates the nineteen hundreds.

T00.05- : Applicable on and after May 2000

↑
—— T indicates the two thousands.

Indented Part Names

Within each illustration is a parts list identifying each serviceable part in the illustration. When a part name is indented in this list, it means that serviceable item is a part of the serviceable item under which it is indented.

Abbreviations and Symbols

R.H. Right Hand } Refers to the side of
L.H. Left Hand } the machine as viewed
} from the operator's
} compartment.

L Length
T Thickness
Z Number of Gear Teeth
O.D. Outside Diameter
I.D. Inside Diameter
O.S. Over Size
U.S. Under Size
N/S Not Serviced
AS Assembly
NOM Nominal

Abbreviations of Wire Colors

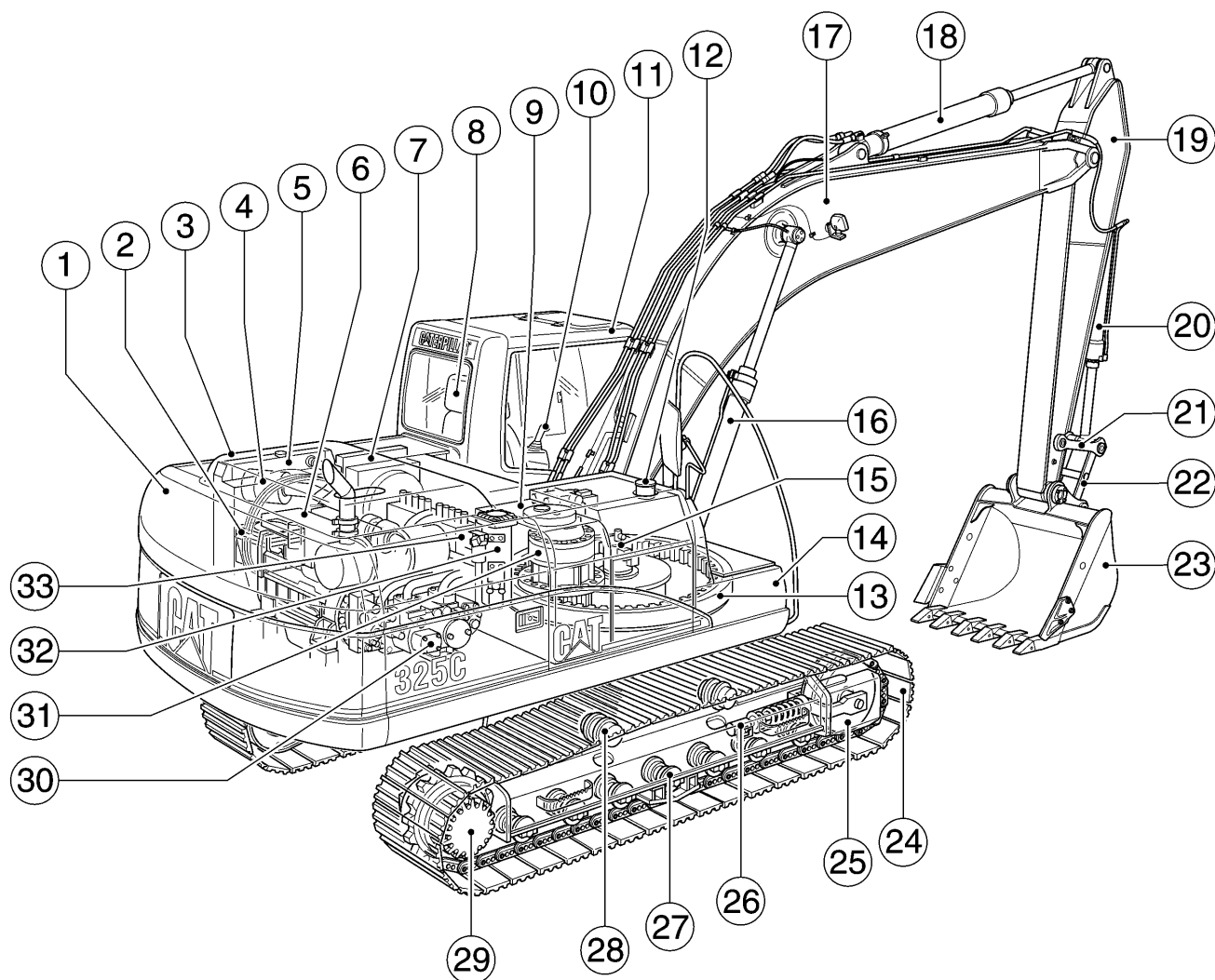
RD :Red	BR :Brown
WH :White	GN :Green
OR :Orange	BU :Blue
YL :Yellow	T :Tan
PK :Pink	DK/BU :Dark Blue
BK :Black	DK/GN :Dark Green
GY :Gray	LT/BU :Light Blue
PU :Purple	LT/GN :Light Green

Note

Continuing improvement and advancement of product design may cause changes to your machine which may not be included in this publication. Each publication is reviewed and revised, as required, to update and include these changes in later editions.

Whenever a question arises regarding your Caterpillar product, or this publication, please consult your Caterpillar dealer for the latest available information.

MODEL VIEW



	PAGE		PAGE		PAGE
① Counterweight	274	⑫ Fuel Tank	121	⑳ Bucket	744
② Battery	124	⑬ Swing Bearing	280	㉑ Track	314
③ Engine Hood	248	⑭ Storage Box	269	㉒ Idler	298
④ Air Cleaner	92	⑮ Swivel	506	㉓ Track Adjuster	302
⑤ Radiator & Aftercooler	72	⑯ Boom Cylinder	358	㉔ Track Roller	308
⑥ Engine	11	⑰ Boom	710	㉕ Carrier Roller	308
⑦ Oil Cooler	76	⑱ Stick Cylinder	360	㉖ Final Drive	242
⑧ Operator Seat	667	⑲ Stick	716	㉗ Pump	331
⑨ Hydraulic Tank	320	㉑ Bucket Cylinder	362	㉘ Swing Drive	489
⑩ Control Lever	508	㉒ Link	734	㉙ Capsule Filter	348
⑪ Cab	596	㉓ Rod	734	㉚ Control Valve	524

REPLACEMENT ITEMS

The following chart provides a convenient listing of those items which require occasional replacement during normal operation or maintenance.

DESCRIPTION	PART NO.	QTY. USED	PAGE NO.
Belt			
Alternator & Air Conditioner	183-4494	1	53
Filter			
Air Conditioner Filter	185-8154	1	678
Air Filter			
Primary Filter Assembly	6I-2503	1	93
Secondary Filter Assembly	6I-2504	1	93
Cab Air Filter	4I-1278	1	685
Engine Oil Filter	1R-0739	1	65
Fuel Filter	1R-0762	1	116
Hydraulic Oil Drain Filter	093-7521	1	346
Hydraulic Oil Pilot Filter	5I-8670	1	347
Hydraulic Oil Tank Return Filter	126-2081	1	350
Water Separator Element	1R-0770	1	119

LIST OF ATTACHMENTS

The following chart provides a convenient listing of attachments with their reference page numbers as a quick reference for parts ordering.

Consists of:		Page
191-5537	ADDITIONAL GEAR TRAIN FOR AUXILIARY PUMP	345
193-6784	AIR PREFILTER	94
183-1037	ALARM, TRAVEL	228
	BOOM	
176-2776	M-BOOM, MASS 5.6M	703
176-2774	R-BOOM, REACH 6.2M	702
193-6823	R-BOOM, REACH 6.2M (Heavy Duty)	702
	BUCKET	
	EXCAVATION (X)	
123-5473	C Family 1370MM Wide-1.1Cu.M.-Adapter Size J350	736
123-5474	C Family 1470MM Wide-1.2Cu.M.-Adapter Size J350	736
193-4943	D Family 1430MM Wide-1.4Cu.M.-Adapter Size J400	738
193-4842	D Family 1500MM Wide-1.5Cu.M.-Adapter Size J400	739
	MASS EXCAVATION (MX)	
123-5615	C Family 1440MM Wide-1.3Cu.M.-Adapter Size J350	737
127-6884	C Family 1450MM Wide-1.3Cu.M.-Adapter Size J400	737
123-5616	C Family 1590MM Wide-1.5Cu.M.-Adapter Size J350	738
202-5119	D Family 1520MM Wide-1.6Cu.M.-Adapter Size J400	739
	BUCKET LINKAGE	
163-7741	C FAMILY	709
176-2793	D FAMILY	709
	CAB	
161-3739	SKYLIGHT HATCH CAB	596
164-0555	WITH ELECTRIC OPENABLE FRONT WINDSHIELD	597
	COUNTERWEIGHT	
193-9601	EXTRA COUNTERWEIGHT (BKH1-Up, BKT1-Up)	275
177-6328	WITHOUT LIFTING EYE	276
	FILM	
193-6740	HAMMER (BLA1-Up)	776
193-6741	HAMMER (BLX1-Up)	777
	GUARD	
176-2796	BOTTOM, HEAVY DUTY (BKH1-Up, BKT1-Up)	263
126-2122	BUCKET CYLINDER	373
164-0534	CAB, FRONT (Full Net)	652
164-0535	CAB, FRONT (Half Net)	654

LIST OF ATTACHMENTS

	Consists of:	Page
178-5549	FOGS	648
171-7485	Cab Front	650
164-0497	Cab Top	649
180-7783	SIDE RUBBER BUMPER (BKH1-00344, BKT1-00330)	292
231-6979	SIDE RUBBER BUMPER (BKH00345-Up, BKT00331-Up)	292.01
	TRACK GUIDE	
195-5374	Full Length (BKH1-Up)	306
184-5686	Full Length (BKT1-Up)	307
195-5375	Track End Guide (BKH1-Up, BLA1-Up)	304
195-5376	Track End Guide (BKT1-Up, BLX1-Up)	305
177-2835	HAND CONTROL PATTERN CHANGER (4 WAYS)	439
178-5599	HEATER & DEFROSTER	691
	HYDRAULIC SYSTEMS, AUXILIARY	
	BOOM LINE GROUPS	
	M-Boom (5.6M)	
193-6622	Drain Lines	420
193-6620	High Pressure Lines	386
193-6621	Medium Pressure Lines	406
	R-Boom (6.2M), R-Boom (6.2M) (Heavy Duty)	
179-5165	Drain Lines	418
179-5163	High Pressure Lines	384
179-5164	Medium Pressure Lines	404
	STICK LINE GROUPS	
	M2.5D Stick	
193-6647	Drain Lines	426
193-6645	High Pressure Lines	402
193-6646	Medium Pressure Lines	416
	M3.2C Stick, R3.2C Stick, R3.2C Stick (Heavy Duty)	
179-5171	Drain Lines	422
179-5168	High Pressure Lines	394
179-5170	Medium Pressure Lines	408
	R2.0D Stick	
193-6637	Drain Lines	425
202-6941	High Pressure Lines	400
193-6636	Medium Pressure Lines	414
	R2.7C Stick, R2.7C Stick (Heavy Duty)	
193-6632	Drain Lines	424
193-6630	High Pressure Lines	398
193-6631	Medium Pressure Lines	412

LIST OF ATTACHMENTS

	Consists of:		Page
	R3.0C Stick		
193-6627	Drain Lines		423
193-6625	High Pressure Lines		396
193-6626	Medium Pressure Lines		410
	TOOL CONTROL		
179-5160	Auxiliary Pump		439
	Combined Function		
179-5156	2 Pump		437
179-5159	2 Pump (Medium Pressure)		438
	Single Function		
179-5157	1 Pump		436
179-5158	2 Pump		436
187-6777	HYDRAULIC TANK		321
196-1421	LARGE BOX COVER		635
	LIGHT		
	WORKING, CAB MOUNT (Time Delay)		
204-1810	With Falling Object	231.01	
163-6631	Without Falling Object		230
	OPTIONAL SEAT		
164-0502	KAB 527P SEAT (With Seat Heater)		669
164-0477	HEADREST (For KAB 528P Seat)		673
	RADIO		
163-6633	AM/FM		646
163-6636	AM/FM (With Cassette)		647
161-3750	RAIN PROTECTOR, CAB FRONT		655
	SIDE CUTTER		
7Y-0366	C, D FAMILY		750
9W-8565	C, D FAMILY (Blade)		751
9W-8566	C, D FAMILY (Combination)		751
	STARTING, COLD WEATHER		
204-3832	FILM (32WR Hydraulic Oil Package)		782
209-2833	STARTING AID		210

LIST OF ATTACHMENTS

Consists of:		Page
STICK		
FOR THE MASS (5.6M) BOOM ONLY		
176-2784	M2.5D Stick	708
193-6643	M2.5D Stick (Auxiliary)	708.01
176-2786	M3.2C Stick	708
193-6638	M3.2C Stick (Auxiliary)	708.01
FOR THE REACH (6.2M) BOOM ONLY		
176-2783	R2.0D Stick	707
193-6633	R2.0D Stick (Auxiliary)	707
176-2781	R2.7C Stick	706
202-7033	R2.7C Stick (Auxiliary)	706.01
193-6735	R2.7C Stick (Heavy Duty)	706
197-2335	R2.7C Stick (Heavy Duty) (Auxiliary)	706.01
176-2785	R3.0C Stick	705
202-7032	R3.0C Stick (Auxiliary)	705
176-2780	R3.2C Stick	704
202-7030	R3.2C Stick (Auxiliary)	704.01
193-6738	R3.2C Stick (Heavy Duty)	704
197-2332	R3.2C Stick (Heavy Duty) (Auxiliary)	704.01
161-3751	SUN VISOR	656
TIP		
ADAPTER SIZE J350		
8E-3757	Abrasion, Heavy Duty	754
8J-4955	Long	752
8E-3752	Long, Heavy Duty	752
3G-3236	Penetration	754
9W-6472	Sharp-Center	755
9W-6473	Sharp-Corner	755
8J-4954	Short	753
8J-4953	Wide	753
ADAPTER SIZE J400		
8E-0837	Abrasion, Heavy Duty	759
127-0716	Long	757
6Y-5472	Long, Heavy Duty	757
8E-0838	Penetration	759
8E-0840	Sharp-Center	760
8E-0839	Sharp-Corner	760
127-0715	Short	758
8E-0836	Wide	758
TOOL		
176-2676	TOOL KIT	761
7I-0776	TOOL KIT (Delux)	761

LIST OF ATTACHMENTS

Consists of:		Page
TRACK		
TRIPLE GROUSER		
188-3240	600MM (BKT1-Up, BLX1-Up)	315
199-3226	700MM (BKH1-Up, BLA1-Up)	315
199-2785	700MM (BKT1-Up, BLX1-Up)	316
199-2783	800MM (BKH1-Up, BLA1-Up)	316
178-5602	WIPER, LOWER WINDSHIELD	639
163-6629	12V-7A POWER SUPPLY SOCKET	191

INDEX

Name	Page	Name	Page
A			
ADJUSTER GP - BUCKET	748	CARRIER GP - SEAL	23
ADJUSTMENT GP - HYDRAULIC TRACK	302	COMPRESSOR GP - REFRIGERANT	701
AIR CLEANER AR	94	CONDENSER & MTG GP - REFRIGERANT	700
AIR CLEANER GP	92	CONSOLE GP	663
	95	CONSOLE GP - OPERATOR	662
AIR CONDITIONER & MOUNTING GP	676	CONTROL & MTG GP - ELECTRONIC	200
AIR CONDITIONER GP	675	CONTROL AR - AUXILIARY	436
	678	CONTROL GP - ELECTRONIC	199
ALARM GP	182	CONTROL GP - HYDRAULIC	516
ALARM GP - TRAVEL	228	CONTROL GP - PILOT OPERATED HYD	510
ALTERNATOR GP - CHARGING	214		514
ARM AS - WIPER	632	COOLER & MOUNTING GP	76
B			
BATTERY & WIRING GP	124	COOLER GP - ENGINE OIL	87
BATTERY & WIRING GP - COLD WEATH	132	COOLER GP - OIL	78
BLOCK GP - HYDRAULIC	352	COUNTERWEIGHT GP	274
BLOWER GP	682	COUPLING GP - FLEXIBLE	333
BOOM AR	703	COUPLING GP - PUMP	332
BOOM AR - 1 PIECE LONG	702	COVER GP	255
BOOM GP	710		614
BOX & MTG GP - STORAGE	269		634
BOX GP - STORAGE	270	COVER GP - AIR INLET	100
BREATHER GP	60	COVER GP - CYLINDER BLOCK	24
BUCKET & ADJUSTER GP	740	COVER GP - FRONT HOUSING	48
BUCKET AR	736	COVER GP - STORAGE BOX	272
BUCKET AS - EXCAVATION	744	COVER GP - VALVE MECHANISM	43
	746	CRANKSHAFT GP	26
BUCKET AS - MASS EXCAVATION	745	CYLINDER & LINES GP - BOOM	354
	747	CYLINDER & LINES GP - BUCKET	356
BUMPER GP - SIDE	292	CYLINDER & LINES GP - STICK	355
C			
CAB GP	596	CYLINDER & SEAL GP - BOOM	358
CAB GP (BASIC)	598	CYLINDER & SEAL GP - BUCKET	362
CAB GP - EXTERIOR	612	CYLINDER & SEAL GP - STICK	360
CAB GP - INTERIOR	604	CYLINDER BLOCK AS	20
CABLE AS	141	CYLINDER BLOCK GP	18
CAMSHAFT GP	30	CYLINDER GP - BUCKET	366
		CYLINDER HEAD AS	40
		CYLINDER HEAD GP	33
D			
		DAMPER & PULLEY GP	32
		DOOR GP - CAB	615
		DOOR GP - HOOD	256

INDEX

Name	Page	Name	Page
DRIVE AS - WINDSHIELD - AUTO.....	626	GUARD GP - SWIVEL.....	266
DRIVE GP - FAN.....	54	GUARD GP - TRACK GUIDE.....	303
DRIVE GP - PUMP.....	345	GUARD GP - TRAVEL MOTOR.....	312
DRIVE GP - SWING.....	489		
DUCT AS.....	686	H	
DUCT GP - AIR.....	684	HANDHOLD GP.....	267
E		HARNES AS.....	134
ELBOW GP - AIR INLET.....	101		148
ELECTRONICS GP.....	198		197
ENGINE AR - COMPLETE.....	12		239
ENGINE AR - CORE.....	16	HARNES AS - CONSOLE.....	164
		HARNES AS - WIRING.....	183
F			192
FAN GP - SUCTION.....	86		196
FASTENER GP - FRONT HOUSING.....	50		197.02
FASTENER GP - LIFTING.....	29	HATCH AS.....	621
FASTENER GP - SWING & FINAL DR.....	246	HATCH GP.....	620
FENDER & COVER GP.....	273	HEAD GP - PUMP CONTROL.....	338
FILM GP.....	776	HEADREST AS.....	673
FILTER GP.....	119	HEATER & MTG GP - CAB.....	692
FILTER GP - ENGINE OIL.....	64	HEATER AR - CAB.....	691
FILTER GP - FUEL.....	116	HEATER GP - AIR INLET.....	216
	118.01	HEATER GP - CAB.....	694
FILTER GP - HYDRAULIC.....	346	HOOD & GUARD GP.....	248
FINAL DRIVE GP.....	242	HOOD GP.....	258
FLYWHEEL GP.....	56	HOOD GP - ENGINE.....	254
FRAME AS - UNDERCARRIAGE.....	294	HORN GP - ELECTRIC.....	657
FRAME GP - UPPER.....	288	HOUSING GP - FLYWHEEL.....	57
FUMES DISPOSAL GP.....	61	HOUSING GP - FRONT.....	47
G		I	
GAUGE GP - OIL LEVEL (DIPSTICK).....	67	IDLER GP - FRONT.....	298
GEAR & BEARING GP - SWING.....	280		
GEAR GP - FRONT.....	52	K	
GUARD AR - BOTTOM.....	263	KNOB AS.....	512
GUARD AR - OVERHEAD.....	648		
GUARD GP - BOTTOM.....	264	L	
GUARD GP - BUCKET CYLINDER.....	373	LAMP GP - FLOOD.....	236
GUARD GP - FRONT WINDOW.....	650		
GUARD GP - OVERHEAD.....	649		

INDEX

Name	Page	Name	Page
LEVER GP.....	660	MONITOR GP - OPERATOR	638
LIFTER GP - VALVE	46	MOTOR & MTG GP - SWING.....	492
LIFTING GP - ENGINE.....	28	MOTOR & MTG GP - TRAVEL.....	496
LIGHTING GP - BOOM.....	232	MOTOR AS - WINDOW WIPER.....	633
LIGHTING GP - CAB.....	230	MOTOR GP - FAN DRIVE.....	502
LIGHTING GP - CHASSIS.....	229	MOTOR GP - SWING	493
LINES GP - AIR.....	98	MOTOR GP - TRAVEL.....	498
LINES GP - AIR CONDITIONER.....	688	MOUNTING GP - ENGINE	59
LINES GP - AUXILIARY HYDRAULIC.....	384	MOUNTING GP - ENGINE OIL FILTER.....	71
LINES GP - BOOM.....	374	MOUNTING GP - GREASE GUN	262
LINES GP - BOOM CYLINDER.....	368	MOUNTING GP - VALVE	520
LINES GP - BUCKET CYLINDER.....	371	MUFFLER GP.....	105
LINES GP - COOLING	84		
LINES GP - DRAIN.....	106		
	418		
	484		
LINES GP - ENGINE OIL	62		
LINES GP - FRONT.....	466		
LINES GP - FUEL.....	112		
LINES GP - GREASE	732		
LINES GP - HEATER.....	698		
LINES GP - MOTOR.....	434		
LINES GP - OIL DRAIN	70		
LINES GP - PILOT.....	440		
LINES GP - PUMP.....	432		
LINES GP - RETURN & FILTER	486		
LINES GP - STICK	378		
LINES GP - STICK CYLINDER.....	370		
LINES GP - SWING MOTOR.....	488		
LINES GP - TRAVEL MOTOR	428		
LINES GP - TURBOCHARGER OIL.....	66		
LINES GP - WATER.....	90		
LINK AS.....	665		
LINK AS - TRACK.....	317		
LINKAGE AR - BUCKET.....	709		
LINKAGE GP - BUCKET	734		
LITERATURE GP.....	674		

P

PAN GP - OIL.....	58
PANEL GP - CIRCUIT BREAKER	144
PISTON & ROD GP	31
PLATE & FILM GP.....	764
PLATFORM GP - OPERATOR.....	659
PLUG GP.....	538
	552
	595
PLUG GP - ENGINE	21
PULLEY GP	53
PUMP & MOUNTING GP	107
	331
PUMP & MTG GP - UNIT INJ HYD.....	107.01
PUMP GP	118
PUMP GP - ENGINE OIL.....	68
PUMP GP - FUEL PRIMING	120
PUMP GP - FUEL TRANSFER	117
PUMP GP - GEAR	342
PUMP GP - MAIN HYDRAULIC	334
PUMP GP - UNIT INJECTION	110
PUMP GP - UNIT INJECTOR HYD.....	108
PUMP GP - WATER.....	88

M

MANIFOLD GP - EXHAUST	102
MIRROR GP - REAR VIEW.....	658
MONITOR & MTG GP - OPERATOR	637

R

RADIATOR & AFTERCOOLER GP	72
RADIATOR GP.....	74
RADIO GP - AM/FM.....	646

INDEX

Name	Page	Name	Page
ROLLER AR - TRACK & CARRIER.....	308	STICK GP - HOE	716
ROLLER GP - TRACK CARRIER.....	310		718
ROLLER GP - TRACK - DOUBLE FLANGE	311.01		720
ROLLER GP - TRACK - SINGLE FLANGE	311		722
ROTATING GP - PUMP	504		724
ROTOR GP - SWIVEL	507		726
			728
			730
S			
SCREEN GP	330	SUPPORT GP - SEAT.....	666
SEAL GP - CRANKSHAFT	27	SUSPENSION GP - SEAT	670
SEAL GP - FUEL INJECTOR	111	SWITCH AS	240
SEAT BELT GP.....	672	SWITCH AS - DISCONNECT	152
SEAT GP	667	SWITCH AS - MAGNETIC	154
SENSOR GP - ENGINE	220	SWITCH AS - ROLLER	240
SENSOR GP - PRESSURE	221	SWITCH AS - ROTARY.....	179
SENSOR GP - SPEED	226	SWITCH GP - START	178
SENSOR GP - TEMPERATURE	225	SWIVEL GP	506
SIDECUTTER GP.....	750		
SIDECUTTER GP - BLADE	751	T	
SIDECUTTER GP - COMBINATION	751	TANK & FILTER GP - HYDRAULIC	322
SPRING GP - RECOIL	301	TANK & MTG GP - FUEL.....	121
SPROCKET GP - NONSEGMENTED	241	TANK & MTG GP - HYDRAULIC.....	320
STARTING AR - COLD WEATHER.....	210	TANK AS - WINDOW WASHER.....	644
STARTING MOTOR GP - ELECTRIC	202	TANK GP - FUEL	122
	211	TIMER AS	157
STICK AR	704.01		239
	706.01	TIP GP	755
	708.01		760
STICK AR - HOE	704	TIP GP - ABRASION.....	754
	705		759
	707	TIP GP - LONG	752
STICK GP.....	717		757
	719	TIP GP - PENETRATION	754
	721		759
	723	TIP GP - SHORT	753
	725		758
	727	TIP GP - WIDE	753
	729		758
	731		

INDEX

Name	Page	Name	Page
TOOL AR.....	761		
TOOL GP	762		
TRACK GP	314		
TURBOCHARGER GP	103		
 V 			
VALVE & MOUNTING GP	521		
VALVE AR - 4 WAY	439		
VALVE AS - BALL	594		
VALVE GP	545		
VALVE GP - CHECK.....	576		
VALVE GP - CONTROL.....	526		
	548		
	558		
VALVE GP - CUSHION CROSSOVER RLF.....	562		
VALVE GP - FLOW CONTROL & RELIEF	553		
VALVE GP - MAIN CONTROL.....	523.02		
VALVE GP - PILOT	508		
	580		
VALVE GP - PILOT RELIEF	541		
	556		
VALVE GP - PRESS REDUCING SOL	572		
VALVE GP - PRESSURE CONTROL.....	109		
VALVE GP - PRESSURE REDUCING	571		
VALVE GP - RELIEF	540		
	543		
	546		
	554		
	561		
	565		
VALVE GP - SELECTOR	579		
VALVE GP - SHUTTLE	592		
VALVE GP - SOLENOID.....	573		
VALVE GP - TRACTION CONTROL.....	564		
VALVE MECHANISM GP.....	44		
VISOR GP - PROTECTION - RAIN.....	655		
VISOR GP - SUN.....	656		
 W 			
WASHER GP - WINDOW.....	642		
WINDOW AS	630.01		
WINDOW GP	622		
	627		
WINDOW GP - DOOR.....	618		
WIPER & WASHER GP - WINDOW.....	640		
WIPER AR - WINDOW.....	639		
WIPER GP - WINDOW.....	631		
WIRING GP.....	191		
	193		
	197.01		
WIRING GP - CAB.....	180		
WIRING GP - CONSOLE	158		
WIRING GP - ENGINE.....	218		
WIRING GP - HEATER	217		
WIRING GP - LOWER WIPER	190		

ENGINE ARRANGEMENT

Consists of :

			Page
1	135-5803	FAN GP-SUCTION	86
1	159-3458	ENGINE AR-COMPLETE.....	12
1	183-8151	MUFFLER GP.....	105

H74241E 01

178-6642 ENGINE AR

S/N BKH 1-00344, BKT 1-00330, BLA 1-00212, BLX 1-00306

Consists of :

			Page
1	135-5803	FAN GP-SUCTION	86.01
1	234-2918	ENGINE AR-COMPLETE.....	15.01
1	183-8151	MUFFLER GP.....	105

H85979E 02

178-6642 ENGINE AR

S/N BKH 00345-Up, BKT 00331-Up, BLA 00213-Up, BLX 00307-Up

ENGINE ARRANGEMENT

Consists of :

			Page
		ENGINE ARRANGEMENT	
1	159-3459	ENGINE AR-CORE.....	16
		BASIC ENGINE	
1	194-1682	COVER GP-CYLINDER BLOCK	24
1	162-8068	PLUG GP-ENGINE	22
1	154-7192	FASTENER GP-FRONT HOUSING	51
1	116-4556	FASTENER GP-FRONT HOUSING	50
1	159-0303	PLUG GP-ENGINE	21
1	135-5035	COVER GP-VALVE MECHANISM	43
1	142-8100	LIFTING GP-ENGINE	28
1	113-6170	FASTENER GP-LIFTING	29
1	177-5196	DAMPER & PULLEY GP	32
1	178-2492	PULLEY GP.....	53
1	118-1727	COVER GP-FRONT HOUSING	48
1	7W-8813	HOUSING GP-FLYWHEEL.....	57
1	177-4813	FLYWHEEL GP.....	56
1	132-3844	CARRIER GP-SEAL.....	23
1	136-8888	COVER GP-FRONT HOUSING	49
1	176-9429	PAN GP-OIL.....	58
1	183-5780	DRIVE GP-FAN.....	54
1	115-4203	SEAL GP-CRANKSHAFT	27

H80136E 06

159-3458 ENGINE AR-COMplete (1/3)
 S/N BKH 1-00344, BKT 1-00330, BLA 1-00212, BLX 1-00306
 Part of 178-6642-Page11

ENGINE ARRANGEMENT

Consists of :

			Page
LUBRICATION SYSTEM			
1	177-4814	GAUGE GP-OIL LEVEL (DIPSTICK)	67
1	70-2475	LINES GP-ENGINE OIL.....	62
1	194-1685	FILTER GP-ENGINE OIL	64
1	194-1684	FUMES DISPOSAL GP	61
1	159-0285	LINES GP-TURBOCHARGER OIL	66
COOLING SYSTEM			
1	177-9823	PUMP GP-WATER.....	88
1	192-9972	LINES GP-WATER.....	90
AIR INLET AND EXHAUST SYSTEM			
1	153-1794	COVER GP-AIR INLET	100
1	127-3466	MANIFOLD GP-EXHAUST	102
1	194-1683	ELBOW GP-AIR INLET.....	101
FUEL SYSTEM			
1	183-2860	LINES GP-FUEL	112

H80137E 06

159-3458 ENGINE AR-COMplete (2/3)
 S/N BKH 1-00344, BKT 1-00330, BLA 1-00212, BLX 1-00306
 Part of 178-6642-Page11

ENGINE ARRANGEMENT

Consists of :

		Page	
ELECTRICAL AND STARTING SYSTEM			
1	159-1822	SENSOR GP-ENGINE.....	220
1	177-6972	ALTERNATOR GP-CHARGING	214
1	118-7284	HEATER GP-AIR INLET.....	216
1	183-1195	CONTROL & MTG GP-ELECTRONIC.....	201
1	201-4204	STARTING MOTOR GP-ELECTRIC	202
1	190-6186	SENSOR GP-SPEED	226
1	190-5038	WIRING GP-ENGINE.....	218
1	194-1686	WIRING GP-HEATER	217
OPERATOR STATION			
1	212-8518	COMPRESSOR GP-REFRIGERANT.....	701

H80138E 06

159-3458 ENGINE AR-COMplete (3/3)
S/N BKH 1-00344, BKT 1-00330, BLA 1-00212, BLX 1-00306
Part of 178-6642-Page11

MEMORANDA

ENGINE ARRANGEMENT

Consists of :

			Page
		ENGINE ARRANGEMENT	
1	233-6947	ENGINE AR-CORE.....	17.01
		BASIC ENGINE	
1	194-1682	COVER GP-CYLINDER BLOCK	24
1	162-8068	PLUG GP-ENGINE	22
1	154-7192	FASTENER GP-FRONT HOUSING	51
1	116-4556	FASTENER GP-FRONT HOUSING	50
1	159-0303	PLUG GP-ENGINE	21
1	135-5035	COVER GP-VALVE MECHANISM	43
1	142-8100	LIFTING GP-ENGINE	28
1	113-6170	FASTENER GP-LIFTING	29
1	177-5196	DAMPER & PULLEY GP	32
1	178-2492	PULLEY GP.....	53
1	118-1727	COVER GP-FRONT HOUSING	48
1	7W-8813	HOUSING GP-FLYWHEEL.....	57
1	177-4813	FLYWHEEL GP.....	56
1	4W-3462	CARRIER GP-SEAL.....	23
1	136-8888	COVER GP-FRONT HOUSING	49
1	176-9429	PAN GP-OIL.....	58
1	183-5780	DRIVE GP-FAN.....	54
1	115-4203	SEAL GP-CRANKSHAFT	27
1	237-5182	PLUG GP-ENGINE	22.01

H85844E 01

234-2918 ENGINE AR-COMplete (1/3)

S/N BKH 00345-Up, BKT 00331-Up, BLA 00213-Up, BLX 00307-Up
Part of 178-6642-Page11