



322C 322C L **Track-Type Excavators**

Powered by 3126 Engine

SERIAL NUMBER

BNY1-99999(Vehicle)
BMX1-99999(Vehicle)
BFN1-99999(Vehicle)
BFX1-99999(Vehicle)
3AK01083-Up(Engine)

HOW TO USE THE PARTS MANUAL

Caterpillar Parts Manuals include illustrations of the groups or assemblies which make up the machine. These illustrations show the standard components plus many of the attachments available for the machine.

The alphabetical index located in the front part of the book should be used to determine the page number on which specific illustrations are shown. Reference to those pages will identify each of the individual serviceable parts.

Captions

The caption under each illustration identifies the part number and name of the group or assembly shown. If more than one illustration is included for any group, the caption identifies the specific machine serial numbers to which each illustration applies. In some cases it is not possible to determine the specific machine serial numbers to which different illustrations are applicable. In those cases the caption identifies the illustration as "First Type", "Second Type", etc. Reference to the actual group or assembly is necessary in those cases to determine which illustration should be used.

Captions provide additional information such as page numbers where illustrations of sub assemblies are shown, information regarding quantities used and other information intended to assist the user in determining parts needs.

This information indicates the effective serial number or effective date on which changes became effective.

Example :

D95.05- : Applicable on and after May 1995

↑
—— D indicates the nineteen hundreds.

T00.05- : Applicable on and after May 2000

↑
—— T indicates the two thousands.

Indented Part Names

Within each illustration is a parts list identifying each serviceable part in the illustration. When a part name is indented in this list, it means that serviceable item is a part of the serviceable item under which it is indented.

Abbreviations and Symbols

R.H. Right Hand } Refers to the side of
L.H. Left Hand } the machine as viewed
} from the operator's
} compartment.

L Length
T Thickness
Z Number of Gear Teeth
O.D. Outside Diameter
I.D. Inside Diameter
O.S. Over Size
U.S. Under Size
N/S Not Serviced
AS Assembly
NOM Nominal

Abbreviations of Wire Colors

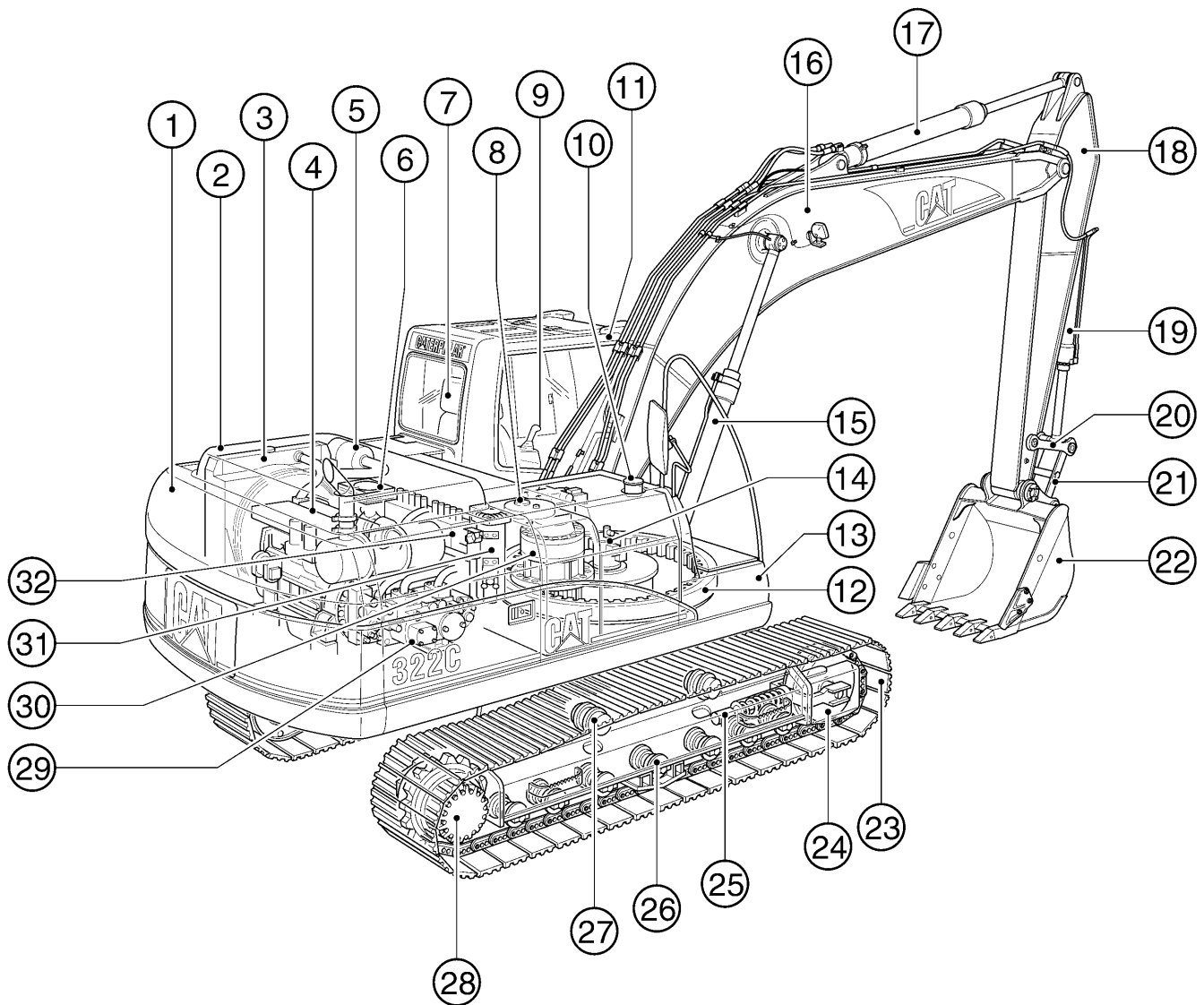
RD :Red	BR :Brown
WH :White	GN :Green
OR :Orange	BU :Blue
YL :Yellow	T :Tan
PK :Pink	DK/BU :Dark Blue
BK :Black	DK/GN :Dark Green
GY :Gray	LT/BU :Light Blue
PU :Purple	LT/GN :Light Green

Note

Continuing improvement and advancement of product design may cause changes to your machine which may not be included in this publication. Each publication is reviewed and revised, as required, to update and include these changes in later editions.

Whenever a question arises regarding your Caterpillar product, or this publication, please consult your Caterpillar dealer for the latest available information.

MODEL VIEW



PAGE		PAGE		PAGE	
① Counterweight	246	⑫ Swing Bearing	252	⑳ Track	290
② Engine Hood	224	⑬ Storage Box	241	㉑ Idler	270
③ Radiator & Oil Cooler	60	⑭ Swivel	436	㉒ Track Adjuster	274
④ Engine	11	⑮ Boom Cylinder	332	㉓ Track Roller	281
⑤ Air Cleaner	71	⑯ Boom	622	㉔ Carrier Roller	281
⑥ Battery	112	⑰ Stick Cylinder	334	㉕ Final Drive	219
⑦ Operator Seat	578	⑱ Stick	628	㉖ Pump	307
⑧ Hydraulic Tank	296	㉒ Bucket Cylinder	336	㉗ Swing Drive	425
⑨ Control Lever	438	㉓ Link	638	㉘ Capsule Filter	321
⑩ Fuel Tank	109	㉔ Rod	638	㉙ Control Valve	452
⑪ Cab	509	㉕ Bucket	649		

REPLACEMENT ITEMS

The following chart provides a convenient listing of those items which require occasional replacement during normal operation or maintenance.

DESCRIPTION	PART NO.	QTY. USED	PAGE NO.
Filter			
Air Conditioner Filter	185-8154	1	593
Air Filter			
Primary Filter Assembly	131-8822	1	72
Secondary Filter Assembly	131-8821	1	72
Cab Air Filter	4I-1278	1	599
Engine Oil Filter	1R-0739	1	53
Fuel Filter	1R-0751	1	101
	1R-0753	1	101
Hydraulic Oil Drain Filter	093-7521	1	319
Hydraulic Oil Pilot Filter	5I-8670	1	320
Hydraulic Tank Return Filter	126-2081	1	323
Water Separator Element	1R-0770	1	108
V-Belt			
Alternator & Fan V-Belt Set	4N-6373	1	39
Refrigerant Compressor V-Belt	5M-8135	1	612
Water Pump V-Belt	036-6775	1	44

LIST OF ATTACHMENTS

The following chart provides a convenient listing of attachments with their reference page numbers as a quick reference for parts ordering.

Consists of:	Page
191-5537 ADDITIONAL GEAR TRAIN FOR AUXILIARY PUMP	318
176-2663 AIR PREFILTER	73
183-1037 ALARM, TRAVEL	202
BOOM	
167-7309 M-BOOM, MASS 5.3M	615
167-7307 R-BOOM, REACH 5.9M	614
186-1232 R-BOOM, REACH 5.9M (Heavy Duty)	614
BUCKET	
EXCAVATION (X)	
165-0960 B Family 1220MM Wide-0.9Cu.M.-Adapter Size J300	641
193-4945 D Family 1345MM Wide-1.3Cu.M.-Adapter Size J400	641
193-4943 D Family 1430MM Wide-1.4Cu.M.-Adapter Size J400	642
193-4842 D Family 1500MM Wide-1.5Cu.M.-Adapter Size J400	642
123-5477 S Family 1255MM Wide-1.0Cu.M.-Adapter Size J350	643
123-5478 S Family 1355MM Wide-1.1Cu.M.-Adapter Size J350	643
123-5479 S Family 1315MM Wide-1.2Cu.M.-Adapter Size J350	644
For Hammer	
127-6883 S Family 1365MM Wide-1.1Cu.M.-Adapter Size J400	644
BUCKET LINKAGE	
B FAMILY	
163-7739 CASTING TYPE	620
176-2848 FABRICATION TYPE	621
D FAMILY	
176-2793 D FAMILY	620
S FAMILY	
176-2656 S FAMILY	621
CAB	
171-7345 METAL ROOF HATCH CAB	510
161-3739 SKYLIGHT HATCH CAB	509
164-0555 WITH ELECTRIC OPENABLE FRONT WINDSHIELD	511
COUNTERWEIGHT	
177-5474 COUNTERWEIGHT (Without Lifting Eye)	248
190-6876 EXTRA COUNTERWEIGHT (BNY1-Up, BMX1-Up)	247
FILM	
186-1231 HAMMER (BFN1-Up)	688
186-1234 HAMMER (BFX1-Up)	689

LIST OF ATTACHMENTS

Consists of:		Page
GUARD		
176-2659	BOTTOM, HEAVY DUTY (BNY1-Up, BMX1-Up)	236
134-8879	SWIVEL (BNY1-Up, BMX1-Up)	239
126-2121	BUCKET CYLINDER	327
164-0534	CAB FRONT (Full Net)	564
164-0535	CAB FRONT (Half Net)	566
178-5549	FOGS	560
171-7485	Cab Front	562
164-0497	Cab Top	561
189-3906	SIDE RUBBER BUMPER (BNY1-Up, BMX1-Up)	264
TRACK GUIDE		
120-7171	Full Length (BNY1-Up, BFN1-Up)	279
120-7173	Full Length (BMX1-Up, BFX1-Up)	280
171-0176	HAND CONTROL PATTERN CHANGER (4 Ways)	383
176-1993	HEATER & DEFROSTER	603
HYDRAULIC SYSTEMS, AUXILIARY		
BOOM LINE GROUPS		
R-Boom (5.9M)		
179-5108	Drain Lines	372
179-5094	High Pressure Lines	358
179-5100	Medium Pressure Lines	366
STICK LINE GROUPS		
M2.5D Stick, R2.5S Stick		
179-5287	Drain Lines	375
188-0050	High Pressure Lines	364
179-5286	Medium Pressure Lines	370
R2.95S Stick		
179-5132	Drain Lines	374
179-5125	High Pressure Lines	362
179-5126	Medium Pressure Lines	368
TOOL CONTROL		
179-5099	Auxiliary Pump	383.01
Combined Function		
179-5273	2 Pump	383
179-5255	2 Pump (Medium Pressure)	383.02

LIST OF ATTACHMENTS

	Consists of:		Page
	Single Function		
179-5272	1 Pump		382
173-7947	2 Pump		382
187-6777	HYDRAULIC TANK		297
196-1421	LARGE BOX COVER		547
	LIGHT		
116-0190	M-BOOM, RIGHT SIDE		210
116-0189	R-BOOM, RIGHT SIDE		208
	WORKING, CAB MOUNTED		
170-9294	For Use With Cab Guard	203.03	
163-6772	Without Cab Guard	203.01	
	WORKING, CAB MOUNTED (Time Delay)		
204-1810	For Use With Cab Guard	205.01	
163-6631	Without Cab Guard	204	
	LONG REACH FRONT-322CL ONLY		
	BUCKET		
7Y-6402	810MM Wide-0.45Cu.M.-Backhoe (BMX1-Up)	652.01	
121-1807	1140MM Wide-0.6Cu.M.-Ditch Cleaning (BMX1-Up)	652.02	
186-3916	LONG REACH FRONT (BMX1-Up)	621.01	
	OPTIONAL SEAT		
161-3781	KAB 527P SEAT	580	
164-0502	KAB 527P SEAT (With Seat Heater)	581	
171-7352	KAB T1P SEAT	582.01	
178-5624	KAB T8P SEAT	582	
164-0477	HEADREST (For KAB 528P, KAB T8P Seat)	587	
	RADIO		
163-6634	AM	557	
163-6633	AM/FM	558	
163-6636	AM/FM (With Cassette)	559	
161-3750	RAIN PROTECTOR, CAB FRONT	567	
	SIDECUTTER		
7Y-0729	B FAMILY	656	
7Y-0366	D, S FAMILY	656	
	STARTING, COLD WEATHER		
186-1142	FILM (32WR Hydraulic Oil Package)	691	
193-6863	STARTING AID	190	
171-9117	STARTING AID, ETHER	200	

LIST OF ATTACHMENTS

Consists of:		Page
STICK		
FOR THE MASS (5.3M) BOOM ONLY		
176-2654	M2.5D Stick	619
179-5295	M2.5D Stick/Auxiliary	619.01
FOR THE REACH (5.9M) BOOM ONLY		
167-7312	R2.5S Stick	618
179-5283	R2.5S Stick/Auxiliary	618
167-7311	R2.95S Stick	616
179-5140	R2.95S Stick/Auxiliary	617
186-1233	R2.95S Stick (Heavy Duty)	617
167-7313	R3.6B Stick	616
179-5289	R3.6B Stick/Auxiliary	619.01
161-3751	SUN VISOR	568
TIP		
ADAPTER SIZE J300		
8E-3756	Abrasion, Heavy Duty	659
9J-3167	Long	657
8E-3751	Long, Heavy Duty	657
3G-3237	Penetration	659
9W-9188	Sharp-Center	660
9W-9189	Sharp-Corner	660
9J-3175	Short	658
4T-2215	Wide	658
ADAPTER SIZE J350		
8E-3757	Abrasion, Heavy Duty	663
8J-4955	Long	661
8E-3752	Long, Heavy Duty	661
3G-3236	Penetration	663
9W-6472	Sharp-Center	664
9W-6473	Sharp-Corner	664
8J-4954	Short	662
8J-4953	Wide	662
ADAPTER SIZE J400		
8E-0837	Abrasion, Heavy Duty	668
127-0716	Long	666
6Y-5472	Long, Heavy Duty	666
8E-0838	Penetration	668
8E-0840	Sharp-Center	669
8E-0839	Sharp-Corner	669
127-0715	Short	667
8E-0836	Wide	667

LIST OF ATTACHMENTS

	Consists of:		Page
	TOOL		
176-2676	TOOL KIT		671
71-0776	TOOL KIT (Deluxe)		671
	TRACK		
	TRIPLE GROUSER		
195-9348	600MM (BMX1-Up, BFX1-Up)		291
195-9346	700MM (BNY1-Up, BFN1-Up)		291
195-9349	700MM (BMX1-Up, BFX1-Up)		292
195-9347	800MM (BNY1-Up, BFN1-Up)		292
178-5604	WIPER, LOWER WINDSHIELD		551
163-6698	12V-2 × 7A POWER SUPPLY SOCKET		175.01
163-6629	12V-7A POWER SUPPLY SOCKET		175

INDEX

Name	Page	Name	Page
DOOR GP - HOOD	232	GUARD GP - BOTTOM	237
DRIVE AS - WINDSHIELD - AUTO	539.01	GUARD GP - CYLINDER	327
DRIVE GP - FAN	40	GUARD GP - FRONT WINDOW	562
DRIVE GP - GOV & TRANSFER PUMP	90	GUARD GP - OVERHEAD	561
DRIVE GP - PUMP	318	GUARD GP - SWIVEL	239
DRIVE GP - SWING	425	GUARD GP - TRACK GUIDE	278
DRIVE GP - WATER PUMP	44	GUARD GP - TRAVEL MOTOR	288
DUCT AS	599.01		
DUCT GP - AIR	598		
		H	
E		HANDHOLD GP	240
ELECTRONICS GP	183	HARNESS AS	122
ENGINE AR	11		136
ENGINE AR - CORE	15		215
		HARNESS AS - CONSOLE	149
F		HARNESS AS - WIRING	163
FAN GP - SUCTION	70		172
FASTENER GP - ENGINE WIRING	46		176
FASTENER GP - FRONT HOUSING	45		180
FASTENER GP - GOVERNOR	92	HATCH AS	534
FASTENER GP - SWING & FINAL DR	222	HATCH GP	533
FENDER & COVER GP	245		535
FILM GP	686	HEAD GP - PUMP CONTROL	314
FILTER GP	108	HEADREST AS	587
FILTER GP - ENGINE OIL	52	HEATER & MTG GP - CAB	604
FILTER GP - FUEL	107	HEATER AR - CAB	603
FILTER GP - HYDRAULIC	319	HEATER GP - AIR INLET	194
FINAL DRIVE GP	219	HEATER GP - CAB	607
FLYWHEEL GP	41	HOOD & GUARD GP	224
FRAME AS - UNDERCARRIAGE	266	HOOD GP	231
FRAME GP - UPPER	260	HOOD GP - ENGINE	230
FUMES DISPOSAL GP	50	HORN GP - ELECTRIC	569
		HOUSING GP - FLYWHEEL	42
		HOUSING GP - FRONT	35
G		I	
GAUGE GP - OIL LEVEL (DIPSTICK)	55	IDLER GP - FRONT	270
GEAR & BEARING GP - SWING	252	INSTRUMENT GP	199
GEAR GP - FRONT	38		
GOVERNOR GP	86		
GOVERNOR GP - UNIT INJECTOR	87		
GUARD AR - BOTTOM	236	K	
GUARD AR - OVERHEAD	560	KNOB AS	442

INDEX

Name	Page	Name	Page
L		M	
LAMP GP - FLOOD	212	MANIFOLD GP - EXHAUST.....	79
LEVER GP	572	MANIFOLD GP - INLET	78
LIFTING GP - ENGINE.....	23	MECHANISM GP - FUEL PUMP & VALVE.....	33
LIGHTING GP - BOOM.....	206	MIRROR GP - REAR VIEW.....	570
LIGHTING GP - CAB.....	203.01	MONITOR & MTG GP - OPERATOR.....	549
LIGHTING GP - CHASSIS.....	203	MONITOR GP - OPERATOR	550
LINES GP - AIR.....	76	MOTOR & MTG GP - SWING.....	428
LINES GP - AIR CONDITIONER	600	MOTOR & MTG GP - TRAVEL.....	433
LINES GP - AUXILIARY HYDRAULIC.....	358	MOTOR AS - WINDOW WIPER.....	545
LINES GP - BOOM.....	350	MOTOR GP - SWING	429
LINES GP - BOOM CYLINDER.....	344	MOTOR GP - TRAVEL.....	434
LINES GP - BUCKET CYLINDER.....	347	MOUNTING GP - AIR CLEANER.....	71
LINES GP - DRAIN.....	84	MOUNTING GP - ENGINE	48
	372	MOUNTING GP - ENGINE OIL FILTER.....	59
	423.01	MOUNTING GP - GREASE GUN	235
LINES GP - ENGINE OIL	51	MOUNTING GP - VALVE	450
LINES GP - FRONT.....	404	MUFFLER GP.....	83
LINES GP - FUEL.....	106		
LINES GP - FUEL FILTER	100	P	
LINES GP - FUEL RATIO CONTROL.....	99	PAN GP - OIL.....	43
LINES GP - GOVERNOR OIL.....	93	PANEL GP - CIRCUIT BREAKER	132
LINES GP - GREASE	635	PISTON & ROD GP	25
LINES GP - HEATER.....	610	PLATE & FILM GP	674
LINES GP - OIL DRAIN	58	PLATFORM GP - OPERATOR	571
LINES GP - PILOT.....	384	PLUG GP	465.06
LINES GP - PUMP.....	380	PLUG GP - ENGINE	19
LINES GP - RETURN & FILTER	420	PULLEY GP - CRANKSHAFT.....	39
LINES GP - STICK	354	PULLEY GP - FAN & ALT DRIVE.....	39
LINES GP - STICK CYLINDER.....	346	PUMP & MOUNTING GP	307
LINES GP - SWING MOTOR.....	424	PUMP GP - ENGINE OIL.....	56
LINES GP - TRAVEL MOTOR	376	PUMP GP - FUEL PRIMING	95
LINES GP - TURBOCHARGER OIL	54	PUMP GP - MAIN HYDRAULIC.....	310
LINES GP - WATER.....	68	PUMP GP - UNIT INJECTION	98
LINK AS.....	576.01	PUMP GP - WATER.....	65
LINK AS - TRACK.....	293		
LINKAGE AR - BUCKET.....	620	R	
LINKAGE AR - FRONT.....	621.01	RADIATOR & HYD OIL COOLER GP	60
LINKAGE GP - BUCKET	638	RADIO GP - AM.....	557
LITERATURE GP.....	588	RADIO GP - AM/FM.....	558
LOCK GP - TRANSPORT	637.02	ROCKER ARM GP.....	34

INDEX

Name	Page	Name	Page
ROLLER AR - TRACK & CARRIER.....	281		
ROLLER GP - TRACK CARRIER.....	285		
ROLLER GP - TRACK - DOUBLE FLANGE	287		
ROLLER GP - TRACK - SINGLE FLANGE	286		
ROTOR GP - SWIVEL	437		
S			
SCREEN GP	306		
SEAL GP - CRANKSHAFT	22		
SEAT BELT GP.....	586		
SEAT GP	578		
SIDECUTTER GP.....	656		
SOLENOID GP - SHUTOFF	198		
SPROCKET GP - NONSEGMENTED	218		
STARTING AID GP - ETHER.....	200		
STARTING AR - COLD WEATHER.....	190		
STARTING MOTOR GP - ELECTRIC	184		
	191		
STICK AR	617		
	618		
STICK AR - HOE	616		
	619		
STICK GP	628.01		
	630		
	633		
	634.01		
STICK GP - HOE	628		
	629		
	631		
	634		
	634.02		
SUPPORT GP - GOVERNOR CONTROL	94		
SUPPORT GP - SEAT	577		
SUSPENSION GP - SEAT.....	583		
SWITCH AS.....	216		
SWITCH AS - DISCONNECT	140		
SWITCH AS - MAGNETIC.....	142		
SWITCH AS - ROLLER.....	216		
SWITCH AS - ROTARY	158		
SWITCH GP - START	157		
SWIVEL GP	436		
T			
		TANK & FILTER GP - HYDRAULIC.....	298
		TANK & MTG GP - FUEL.....	109
		TANK & MTG GP - HYDRAULIC.....	296
		TANK AS - WINDOW WASHER.....	556
		TANK GP - FUEL	110
		TIMER AS	145
			215
		TIP GP	660
			664
			669
		TIP GP - ABRASION.....	659
			663
			668
		TIP GP - LONG.....	657
			661
			666
			670
		TIP GP - PENETRATION	659
			663
			668
		TIP GP - SHORT.....	658
			662
			667
		TIP GP - WIDE.....	658
			662
			667
		TOOL AR.....	671
		TOOL GP.....	672
		TRACK ADJUSTER & RECOIL GP.....	274
		TRACK GP.....	290
		TURBOCHARGER GP.....	80
V			
		VALVE & MOUNTING GP.....	451
		VALVE AR	383
		VALVE AS - BALL	508
		VALVE GP	473
		VALVE GP - CHECK.....	103
			489
		VALVE GP - CONTROL	454
			476

INDEX

Name	Page	Name	Page
VALVE GP - CUSHION CROSSOVER RLF	478		
VALVE GP - FLOW CONTROL & RELIEF	465.05		
VALVE GP - MAIN CONTROL	451.03		
VALVE GP - PILOT	438		
	494		
VALVE GP - PILOT RELIEF	471		
	477.05		
VALVE GP - PRESS REDUCING SOL	486		
VALVE GP - PRESSURE REDUCING	485		
VALVE GP - RELIEF	468		
	472		
	474		
	477.02		
	481		
VALVE GP - SELECTOR	492		
VALVE GP - SHUTTLE	506		
VALVE GP - SOLENOID	487		
	491		
VALVE GP - TRACTION CONTROL	480		
VISOR GP - PROTECTION - RAIN	567		
VISOR GP - SUN	568		

W

WASHER GP - WINDOW	554
WINDOW GP	536
	540
WINDOW GP - DOOR	532
WIPER & WASHER GP - WINDOW	552
WIPER AR - WINDOW	551
WIPER GP - WINDOW	544
WIRING GP	171
	175
	177
WIRING GP - CAB	160
WIRING GP - CONSOLE	146
WIRING GP - LOWER WIPER	174

ENGINE ARRANGEMENT

Consists of :

			Page
1	168-8660	ENGINE AR.....	12
1	178-6486	MUFFLER GP.....	83
1	178-6506	FAN GP-SUCTION.....	70

H70956E 02

171-9105 ENGINE AR

ENGINE ARRANGEMENT

Consists of :

			Page
		ENGINE ARRANGEMENT	
1	168-8661	ENGINE AR-CORE.....	15
		BASIC ENGINE	
1	190-6185	COVER GP-CYLINDER BLOCK.....	20
1	61-1158	COVER GP-SOUND SUPPRESSION	
1	154-7192	FASTENER GP-FRONT HOUSING.....	45
1	163-5377	FASTENER GP-ENGINE WIRING.....	46
1	156-0228	PLUG GP-ENGINE.....	19
1	132-1483	COVER GP-VALVE MECHANISM.....	26
1	117-3476	LIFTING GP-ENGINE.....	23
1	101-4539	HOUSING GP-FRONT.....	35
1	133-5056	DAMPER & PULLEY GP.....	27
1	4W-5429	PULLEY GP-CRANKSHAFT.....	39
1	118-1727	COVER GP-FRONT HOUSING.....	36
1	7W-8813	HOUSING GP-FLYWHEEL.....	42
1	9Y-6092	FLYWHEEL GP.....	41
1	4W-3462	CARRIER GP-SEAL.....	26
1	136-8888	COVER GP-FRONT HOUSING.....	37

H71015E 02

ENGINE ARRANGEMENT

Consists of :

			Page
BASIC ENGINE			
1	176-9429	PAN GP-OIL.....	43
1	7C-0044	DRIVE GP-FAN.....	40
1	101-0427	PULLEY GP-FAN & ALT DRIVE.....	39
1	4W-5428	DRIVE GP-WATER PUMP	44
LUBRICATION SYSTEM			
1	178-2499	GAUGE GP-OIL LEVEL (DIPSTICK)	55
1	7C-2475	LINES GP-ENGINE OIL.....	51
1	183-2852	FILTER GP-ENGINE OIL	52
1	6I-1546	FUMES DISPOSAL GP	50
1	7C-2476	LINES GP-TURBOCHARGER OIL	54
COOLING SYSTEM			
1	123-8388	PUMP GP-WATER.....	65
1	183-2858	LINES GP-WATER.....	68
1	177-6968	COOLER GP-ENGINE OIL.....	64

H71016E 02

ENGINE ARRANGEMENT

Consists of :

			Page
		AIR INLET AND EXHAUST SYSTEM	
1	133-5048	LINES GP-AIR	76
1	61-2298	MANIFOLD GP-EXHAUST	79
1	134-2357	AFTERCOOLER GP-TREATED WATER.....	82
		FUEL SYSTEM	
1	180-8016	LINES GP-FUEL FILTER.....	100
1	129-3230	PUMP GP-FUEL PRIMING	95
1	190-6184	SUPPORT GP-GOVERNOR CONTROL.....	94
		ELECTRICAL AND STARTING SYSTEM	
1	70-4028	SOLENOID GP-SHUTOFF	198
1	124-0643	ALTERNATOR GP-CHARGING	195
1	134-2356	HEATER GP-AIR INLET	194
1	178-2496	INSTRUMENT GP	199
1	108-3858	STARTING MOTOR GP-ELECTRIC	184

H71017E 02

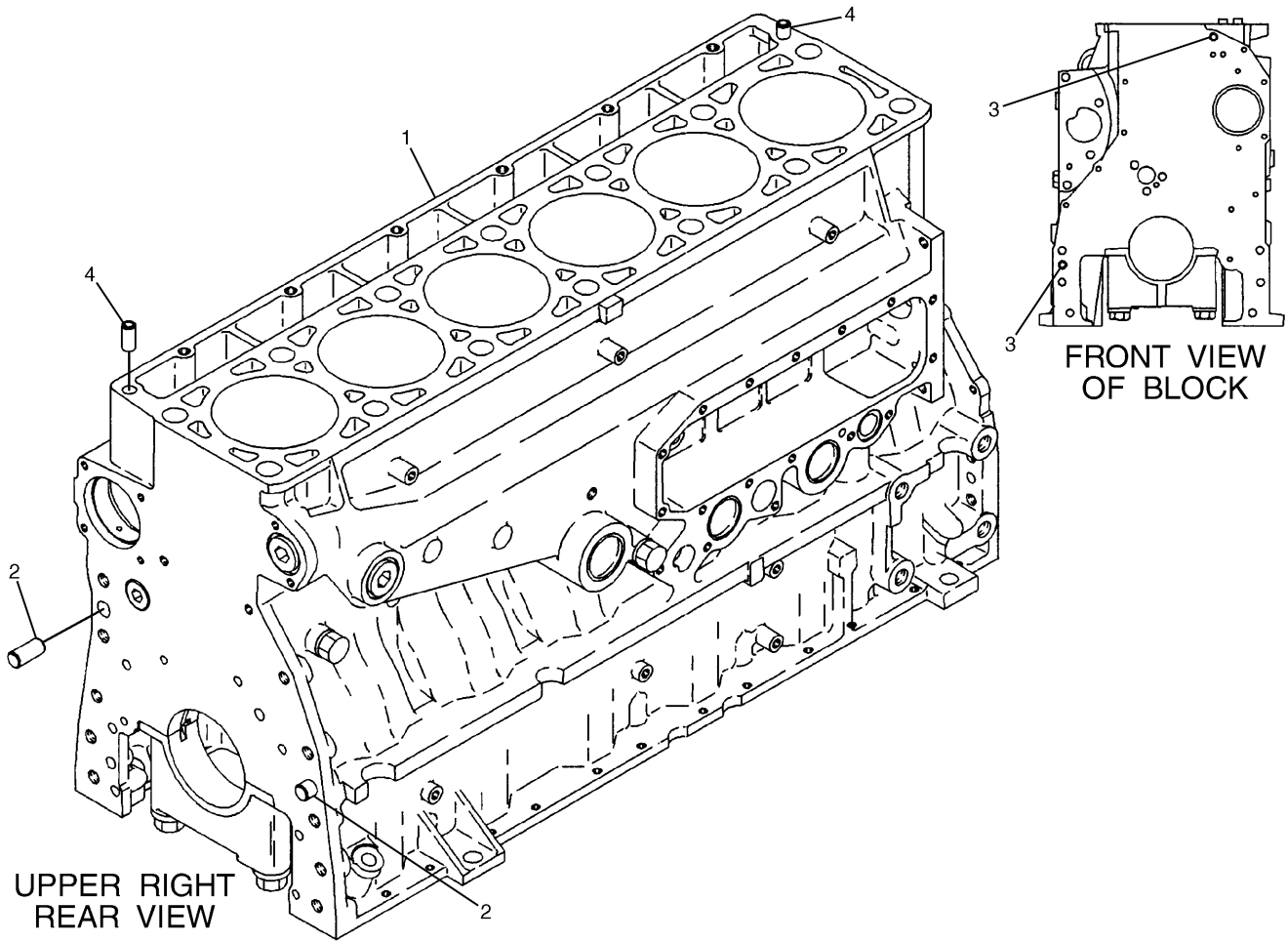
ENGINE ARRANGEMENT

Consists of :

			Page
BASIC ENGINE			
1	108-5759	CAMSHAFT GP.....	24
1	113-6087	CRANKSHAFT GP	21
1	129-1165	CYLINDER BLOCK GP	16
1	140-7370	CYLINDER HEAD GP.....	28
1	101-4540	GEAR GP-FRONT	38
6	147-9592	PISTON & ROD GP.....	25
1	4P-4372	MECHANISM GP-FUEL PUMP & VALVE.....	33
1	115-4210	SEAL GP-CRANKSHAFT	22
LUBRICATION SYSTEM			
1	115-4138	PUMP GP-ENGINE OIL.....	56
1	194-1680	BREATHER GP	49
AIR INLET AND EXHAUST SYSTEM			
1	183-5779	MANIFOLD GP-INLET	78
1	126-5879	TURBOCHARGER GP.....	80
FUEL SYSTEM			
6	107-7732	PUMP GP-UNIT INJECTION.....	98
1	105-1695	CONTROL GP-FUEL INJECTION.....	97
1	183-2855	GOVERNOR GP.....	86
1	4P-9693	LINES GP-FUEL RATIO CONTROL.....	99

H70957E 01

BASIC ENGINE



NOTE	No.	PART No.	QTY	PART NAME	NOTE	No.	PART No.	QTY	PART NAME
Y	1	129-1164	1	BLOCK GP					
	2	7N-5683	2	DOWEL					
	3	6V-3538	2	DOWEL					
	4	1W-8407	2	SLEEVE					

Y-SEE SEPARATE ILLUSTRATION

H70265E 03

129-1165 CYLINDER BLOCK GP
 Part of 168-8661-Page15
 129-1164-Page17