



320C U 320C LU

Track-Type Excavators

Powered by 3066 Engine

SERIAL NUMBER

FBB1 To Last Built(Vehicle)

GAB1 To Last Built(Vehicle)

7JK52516 To Last Installed(Engine)

HOW TO USE THE PARTS MANUAL

Caterpillar Parts Manuals include illustrations of the groups or assemblies which make up the machine. These illustrations show the standard components plus many of the attachments available for the machine.

The alphabetical index located in the front part of the book should be used to determine the page number on which specific illustrations are shown. Reference to those pages will identify each of the individual serviceable parts.

Captions

The caption under each illustration identifies the part number and name of the group or assembly shown. If more than one illustration is included for any group, the caption identifies the specific machine serial numbers to which each illustration applies. In some cases it is not possible to determine the specific machine serial numbers to which different illustrations are applicable. In those cases the caption identifies the illustration as "First Type", "Second Type", etc. Reference to the actual group or assembly is necessary in those cases to determine which illustration should be used.

Captions provide additional information such as page numbers where illustrations of sub assemblies are shown, information regarding quantities used and other information intended to assist the user in determining parts needs.

This information indicates the effective serial number or effective date on which changes became effective.

Example :

D95.05- : Applicable on and after May 1995

↑
—— D indicates the nineteen hundreds.

T00.05- : Applicable on and after May 2000

↑
—— T indicates the two thousands.

Indented Part Names

Within each illustration is a parts list identifying each serviceable part in the illustration. When a part name is indented in this list, it means that serviceable item is a part of the serviceable item under which it is indented.

Abbreviations and Symbols

R.H. Right Hand } Refers to the side of
L.H. Left Hand } the machine as viewed
} from the operator's
} compartment.

L Length
T Thickness
Z Number of Gear Teeth
O.D. Outside Diameter
I.D. Inside Diameter
O.S. Over Size
U.S. Under Size
N/S Not Serviced
AS Assembly
NOM Nominal

Abbreviations of Wire Colors

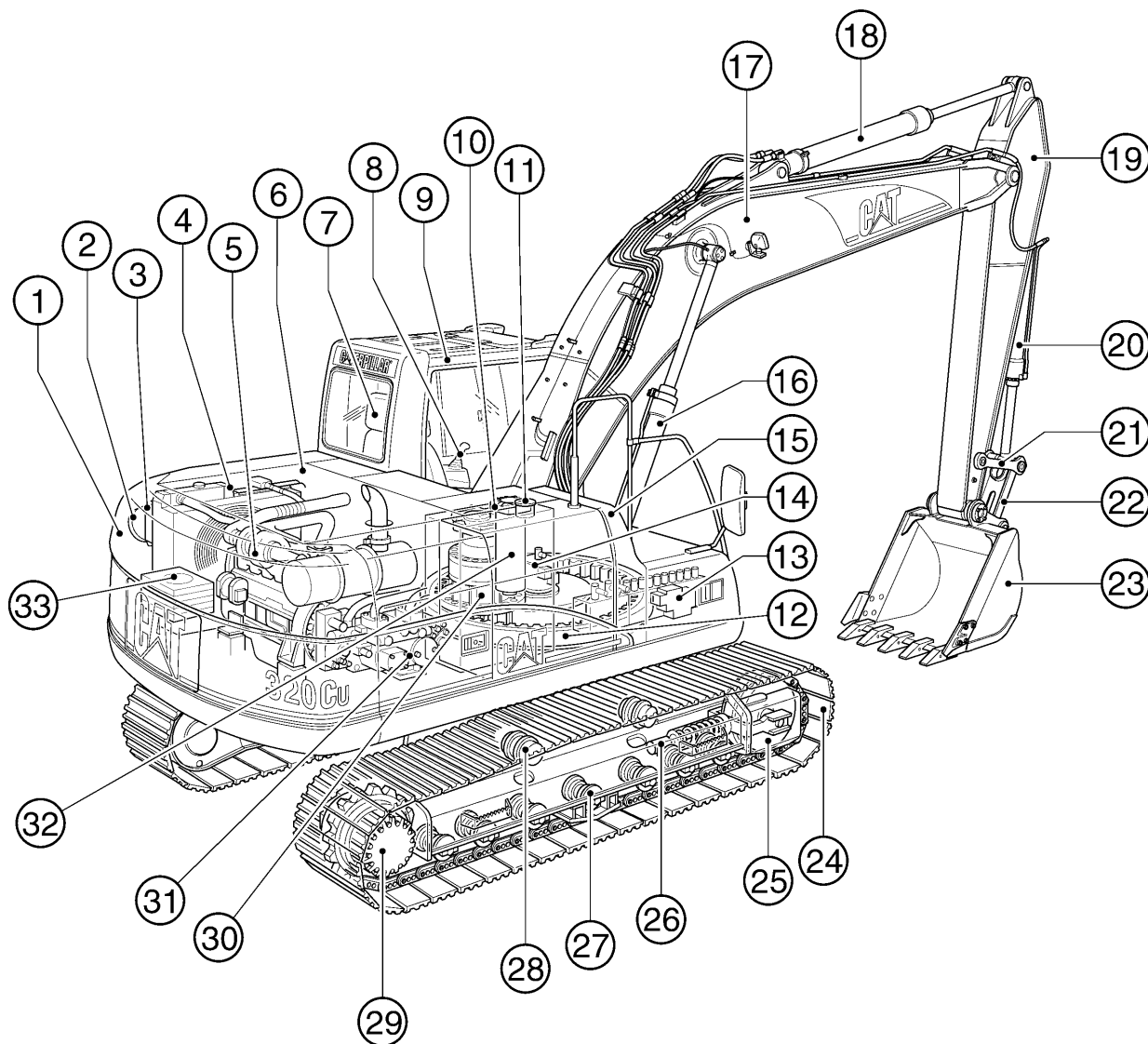
RD :Red	BR :Brown
WH :White	GN :Green
OR :Orange	BU :Blue
YL :Yellow	T :Tan
PK :Pink	DK/BU :Dark Blue
BK :Black	DK/GN :Dark Green
GY :Gray	LT/BU :Light Blue
PU :Purple	LT/GN :Light Green

Note

Continuing improvement and advancement of product design may cause changes to your machine which may not be included in this publication. Each publication is reviewed and revised, as required, to update and include these changes in later editions.

Whenever a question arises regarding your Caterpillar product, or this publication, please consult your Caterpillar dealer for the latest available information.

MODEL VIEW



	PAGE		PAGE		PAGE
① Counterweight	194	⑫ Swing Bearing	200	⑳ Bucket	624
② Air Cleaner	48	⑬ Control Valve	408	㉑ Track	226
③ Aftercooler	40	⑭ Swivel	390	㉒ Idler	207
④ Radiator & Oil Cooler	38	⑮ Storage Box	189	㉓ Track Adjuster	211
⑤ Engine	11.01	⑯ Boom Cylinder	268	㉔ Track Roller	220
⑥ Engine Cover	172	⑰ Boom	600	㉕ Carrier Roller	220
⑦ Operator Seat	559	⑱ Stick Cylinder	270	㉖ Final Drive	167
⑧ Control Lever	392	⑲ Stick	604	㉗ Swing Drive	378
⑨ Cab	478	㉚ Bucket Cylinder	272	㉘ Pump	243
⑩ Hydraulic Tank	236	㉛ Link	615	㉙ Capsule Filter	258
⑪ Fuel Tank	66	㉜ Rod	615	㉚ Battery	70

REPLACEMENT ITEMS

The following chart provides a convenient listing of those items which require occasional replacement during normal operation or maintenance.

DESCRIPTION	PART NO.	QTY. USED	PAGE NO.
Belt			
Alternator & Air Conditioner	212-8585	1	31.03
Refrigerant Compressor V-Belt	255-3017	1	593
Filter			
Water Separator Element	287-0222	1	63.01
Air Conditioner Filter	178-5479	1	575
Air Filter			
Secondary Filter Assembly	131-8821	1	49
Primary Filter Assembly	131-8822	1	49
Engine Oil Filter	1R-0739	1	35
Cab Air Filter	293-1183	1	577
Hydraulic Oil Drain Filter	093-7521	1	256
Hydraulic Oil Pilot Filter	5I-8670	1	257.02
Hydraulic Oil Tank Return Filter	126-2081	1	260
Hydraulic Oil Tank Return Filter	179-9806	1	261
Fuel Filter	1R-0751	1	59

LIST OF ATTACHMENTS

The following chart provides a convenient listing of attachments with their reference page numbers as a quick reference for parts ordering.

Consists of:	Page
186-1227 ADDITIONAL GEAR TRAIN FOR AUXILIARY PUMP	254
183-1037 ALARM, TRAVEL	148
 BOOM	
167-7253 R-BOOM, REACH 5.7M	594
176-2812 R-BOOM, REACH 5.7M (Heavy Duty)	594
 BUCKET	
EXCAVATION (X)	
165-0958 B Family 1100MM Wide-0.8Cu.M.-Adapter Size J300	618
165-0960 B Family 1220MM Wide-0.9Cu.M.-Adapter Size J300	618
168-2998 B Family 1280MM Wide-1.0Cu.M.-Adapter Size J300	619
For Demolition	
168-3029 B Family 1230MM Wide-0.9Cu.M.-Adapter Size J350	620
For Hammer	
165-0959 B Family 1110MM Wide-0.8Cu.M.-Adapter Size J350	619
 BUCKET LINKAGE	
163-7739 B FAMILY (Casting Type)	598
176-2848 B FAMILY (Fabrication Type)	599
176-2732 FOR DEMOLITION	598
 CAB	
171-7345 METAL ROOF HATCH CAB	479
161-3739 SKYLIGHT HATCH CAB	478
164-0555 WITH ELECTRIC OPENABLE FRONT WINDSHIELD	480
 COUNTERWEIGHT	
178-5829 EXTRA COUNTERWEIGHT	196
192-6568 WITH LIFTING EYE	195
218-5378 EXTRA PINS	617.03
 FILM	
186-1239 DEMOLITION	660
 GUARD	
204-3761 BOTTOM, HEAVY DUTY	183
126-2170 BUCKET CYLINDER (For Demolition)	281
164-0534 CAB FRONT (Full Net)	544
164-0535 CAB FRONT (Half Net)	546

LIST OF ATTACHMENTS

	Consists of:		Page
178-5549	FOGS		540
171-7485	Cab Front		542
164-0497	Cab Top		541
201-3037	SIDE RUBBER BUMPER		204
134-8875	SWIVEL		185
	TRACK GUIDE		
120-7165	Full Length (FBB1-Up)		217
120-7168	Full Length (GAB1-Up)		219
120-7164	Track End Guide (FBB1-Up)		216
120-7167	Track End Guide (GAB1-Up)		218
199-7443	HAND CONTROL PATTERN CHANGER (4 Ways)		444
201-4488	HEATER & DEFROSTER		582
	HYDRAULIC SYSTEMS, AUXILIARY		
	BOOM LINE GROUPS		
	R-Boom (5.7M)		
187-9815	Drain Lines		310
	High Pressure Lines		
173-7919	Combined Function		292
187-9838	Single Function		290
187-9814	Medium Pressure Lines		300
198-0362	Quick Coupler Lines	594.01	
187-9816	With Slow Return Valve (For Demolition)		308
216-6669	QUICK COUPLER LINES (On Upper Frame And Control)		326
	STICK LINE GROUPS		
	R2.5B Stick		
173-7954	Drain Lines		312
173-7955	High Pressure Lines		288
173-7948	Medium Pressure Lines		302
	R2.9B Stick		
173-8033	Drain Lines		313
173-8027	High Pressure Lines		288
153-8864	Medium Pressure Lines		304
187-9902	Quick Coupler Lines	597.01	
	R2.9B Stick (Heavy Duty)		
153-8862	High Pressure Lines		296

LIST OF ATTACHMENTS

	Consists of:	Page
	R3.9B Stick	
173-8076	Drain Lines	314
173-7968	High Pressure Lines	289
173-8075	Medium Pressure Lines	306
	TOOL CONTROL	
	Combined Function	
173-7972	2 Pump	323
179-5143	2 Pump (For Demolition)	326
153-8824	2 Pump + Additional Valve	324
153-8825	Correspond With Additional Pump	325
	Double Function	
187-9826	1 Pump	323
	Single Function	
153-8770	1 Pump	322
153-8771	2 Pump	322
187-6775	HYDRAULIC TANK (FBB1-01192,GAB1-00291)	237
196-1420	LARGE BOX COVER	526
	LIGHT	
161-3121	R-BOOM, RIGHT SIDE	154
	WORKING, CAB MOUNTED (Time Delay)	
204-1810	For Use With Cab Guard	157.01
163-6631	Without Cab Guard	156
262-9342	METAL SCREEN	11
	OPTIONAL SEAT	
164-0502	KAB 527P SEAT	561
171-7352	KAB T1P SEAT	563
178-5624	KAB T8P SEAT	562
164-0477	HEADREST (For KAB 528P, KAB T8P Seat)	569
200-7294	QUICK COUPLER	599.01
	RADIO	
163-6634	AM	537
163-6633	AM/FM	538
163-6636	AM/FM (With Cassette)	539
161-3750	RAIN PROTECTOR, CAB FRONT	547

LIST OF ATTACHMENTS

	Consists of:	Page
	SIDECUTTER	
7Y-0729	B FAMILY	628
	STARTING, COLD WEATHER	
176-2789	FILM (32WR Hydraulic Oil Package)	659
209-2866	STARTING AID	78
	STICK	
	FOR THE REACH (5.7M) BOOM ONLY	
163-7766	R2.5B Stick	595
176-2716	R2.5B Stick (Heavy Duty)	595
163-7765	R2.9B Stick	596
176-2731	R2.9B Stick (For Demolition)	597
176-2715	R2.9B Stick (Heavy Duty)	596
163-7764	R3.9B Stick	597
161-3751	SUN VISOR	548
	TIP	
	ADAPTER SIZE J300	
8E-3756	Abrasion, Heavy Duty	631
9J-3167	Long	629
8E-3751	Long, Heavy Duty	629
3G-3237	Penetration	631
9W-9188	Sharp-Center	632
9W-9189	Sharp-Corner	632
9J-3175	Short	630
4T-2215	Wide	630
	ADAPTER SIZE J350	
8E-3757	Abrasion, Heavy Duty	635
8J-4955	Long	633
8E-3752	Long, Heavy Duty	633
3G-3236	Penetration	635
9W-6472	Sharp-Center	636
9W-6473	Sharp-Corner	636
8J-4954	Short	634
8J-4953	Wide	634
	TOOL	
176-2676	TOOL KIT	637
7I-0776	TOOL KIT (Deluxe)	637
117-4166	WRENCH (For Demolition)	640
	TRACK	
	DOUBLE GROUSER	
194-1914	600MM (GAB1-Up)	229
194-1915	700MM (GAB1-Up)	229

LIST OF ATTACHMENTS

Consists of:		Page
	TRIPLE GROUSER	
194-1910	600MM (GAB1-Up)	230
5I-6136	600MM (Long Bush Type) (FBB1-Up)	227
5I-6138	600MM (Long Bush Type) (GAB1-Up)	228
194-1917	700MM (FBB1-Up)	227
194-1911	700MM (GAB1-Up)	230
194-1921	800MM (FBB1-Up)	228
196-1795	900MM (GAB1-Up)	231
217-9369	WIPER, LOWER WINDSHIELD	530
163-6629	12V-7A POWER SUPPLY SOCKET	130

INDEX

Name	Page	Name	Page
A			
ADJUSTER GP - BUCKET	627	CONTROL AR - AUXILIARY.....	322
AIR CLEANER GP.....	49	CONTROL AR - QUICK COUPLER	326
AIR CONDITIONER & MOUNTING GP.....	572	CONTROL GP - ELECTRONIC	144
AIR CONDITIONER GP.....	571	CONTROL GP - GOVERNOR.....	64
	574	CONTROL GP - HYDRAULIC.....	400
ALARM GP	128	CONTROL GP - PILOT OPERATED HYD.....	394
ALARM GP - TRAVEL.....	148		398
ALTERNATOR GP - CHARGING.....	150	COOLER GP - ENGINE OIL	44
ARM AS - WIPER	523	COUNTERWEIGHT GP.....	194
B			
BATTERY & WIRING AR - COLD WEATH.....	78	COUPLER AR - QUICK	599.01
BATTERY & WIRING GP.....	70	COUPLER GP - QUICK.....	617.02
BATTERY & WIRING GP - COLD WEATH	79	COUPLING GP - FLEXIBLE.....	245
BLOCK GP - HYDRAULIC.....	262	COUPLING GP - PUMP.....	244
BOOM AR	594.01	COVER AS.....	180.08
BOOM AR - 1 PIECE LONG.....	594	COVER GP	185.03
BOOM GP	600		504
BOX & MTG GP - STORAGE	189		525
BOX GP - STORAGE	190	COVER GP - VALVE MECHANISM	20
BREATHER GP	33	CRANKSHAFT GP.....	21
BUCKET & ADJUSTER GP.....	621	CYLINDER & LINES GP - BOOM.....	264
BUCKET AR	618	CYLINDER & LINES GP - BUCKET.....	266
BUCKET AS - EXCAVATION.....	624	CYLINDER & LINES GP - STICK.....	265
BUMPER GP - SIDE.....	204	CYLINDER & SEAL GP	275.01
C			
CAB GP.....	478	CYLINDER & SEAL GP - BOOM	268
CAB GP (BASIC).....	482	CYLINDER & SEAL GP - BUCKET.....	272
CAB GP - EXTERIOR	502	CYLINDER & SEAL GP - STICK.....	270
CAB GP - INTERIOR	490	CYLINDER BLOCK GP.....	18
CAMSHAFT GP.....	22	CYLINDER HEAD GP.....	14
CARTRIDGE AS - TURBOCHARGER.....	51	D	
COMPRESSOR GP - REFRIGERANT.....	592	DOOR GP - CAB	505
CONDENSER & MTG GP - REFRIGERANT	590	DOOR GP - HOOD.....	179
CONSOLE GP.....	555		180.05
	557.01	DRIVE AS - WINDSHIELD - AUTO	516
CONSOLE GP - OPERATOR	554	DRIVE GP - PUMP.....	254
CONTROL & MTG GP - ELECTRONIC.....	142	DRIVE GP - SWING.....	378
D			
		DUCT AS.....	578
		DUCT GP - AIR.....	576
E			
		ELECTRONICS GP	143

INDEX

Name	Page	Name	Page
F			
FAN GP - SUCTION.....	42	HARNES AS - WIRING.....	121
	47		128.02
FASTENER GP - SWING & FINAL DR.....	170		131
FENDER & COVER GP.....	192		134
FILM GP.....	654		140
FILTER GP - ENGINE OIL.....	34	HATCH AS.....	510
FILTER GP - FUEL.....	58	HATCH GP.....	509
FILTER GP - HYDRAULIC.....	256		511
FINAL DRIVE GP.....	167	HEAD GP - PUMP CONTROL.....	250
FLYWHEEL GP.....	27	HEADREST AS.....	569
FRAME AS - UNDERCARRIAGE.....	205	HEATER & MTG GP - CAB.....	584
FRAME GP - UPPER.....	202	HEATER AR - CAB.....	582
G			
GEAR & BEARING GP - SWING.....	200	HEATER GP - CAB.....	586
GEAR GP - FRONT.....	26	HOOD & GUARD GP.....	172
GUARD AR - BOTTOM.....	183		180.02
GUARD AR - OVERHEAD.....	540	HOOD GP - ENGINE.....	178
GUARD GP - BOTTOM.....	182		180.04
	184	HORN GP - ELECTRIC.....	549
	185.01	HOUSING GP - FILTER.....	263
GUARD GP - CYLINDER.....	281	HOUSING GP - FLYWHEEL.....	28
GUARD GP - FRONT WINDOW.....	542	HOUSING GP - FRONT.....	24
GUARD GP - OVERHEAD.....	541	I	
GUARD GP - SNOW.....	188	IDLER GP - FRONT.....	207
GUARD GP - SWIVEL.....	185	K	
GUARD GP - TRACK GUIDE.....	215	KNOB AS.....	396
GUARD GP - TRAVEL MOTOR.....	224	L	
H			
HANDHOLD GP.....	186	LAMP GP - FLOOD.....	158
HARNES AS.....	80	LEVER GP.....	552
	90	LIGHTING GP - BOOM.....	152
	96	LIGHTING GP - CAB.....	156
	161	LIGHTING GP - CHASSIS.....	151
HARNES AS - CONSOLE.....	108	LINES AR - AUXILIARY HYDRAULIC.....	288
		LINES GP - AIR.....	53
		LINES GP - AIR CONDITIONER.....	580

INDEX

Name	Page	Name	Page
LINES GP - AUXILIARY HYDRAULIC.....	290	MOUNTING GP - AIR CLEANER.....	48
LINES GP - BOOM.....	282	MOUNTING GP - ALTERNATOR.....	31
LINES GP - BOOM CYLINDER.....	276	MOUNTING GP - ENGINE.....	30
LINES GP - BUCKET CYLINDER.....	279	MOUNTING GP - GREASE GUN.....	181
LINES GP - COOLING.....	43	MOUNTING GP - STARTING MOTOR.....	145
LINES GP - DRAIN.....	54	MOUNTING GP - VALVE.....	404
	310	MUFFLER GP.....	52
LINES GP - ENGINE OIL.....	32		
LINES GP - FRONT.....	358	N	
LINES GP - FUEL.....	60	NOZZLE GP - UNIT INJECTOR.....	57
	62		
LINES GP - GREASE.....	613	P	
LINES GP - HEATER.....	588	PAN GP - OIL.....	29
LINES GP - OIL DRAIN.....	37	PANEL GP - CIRCUIT BREAKER.....	92
LINES GP - PILOT.....	328	PIN GP.....	617.03
LINES GP - PUMP.....	320	PISTON & ROD GP.....	23
LINES GP - QUICK COUPLER.....	309.01	PLATE & FILM GP.....	642
	315.01	PLATFORM GP - OPERATOR.....	551
LINES GP - RETURN & FILTER.....	372	PLUG GP.....	435
LINES GP - STICK.....	285	PULLEY GP.....	31.01
LINES GP - STICK CYLINDER.....	278	PUMP & MOUNTING GP.....	243
LINES GP - SWING MOTOR.....	374	PUMP AS - WATER.....	45.01
LINES GP - TRAVEL MOTOR.....	316	PUMP GP - FUEL INJECTION.....	61.01
LINES GP - TURBOCHARGER OIL.....	36	PUMP GP - MAIN HYDRAULIC.....	246
LINES GP - WATER.....	46	PUMP GP - WATER.....	45
LINK AS.....	557		
LINK AS - TRACK.....	232	R	
LINKAGE AR - BUCKET.....	598	RADIATOR & HYD OIL COOLER GP.....	38
LINKAGE GP - BUCKET.....	615	RADIO GP - AM.....	537
LITERATURE GP.....	570	RADIO GP - AM/FM.....	538
		ROLLER AR - TRACK & CARRIER.....	220
M		ROLLER GP - TRACK CARRIER.....	222
MANIFOLD GP - EXHAUST.....	56	ROLLER GP - TRACK - SINGLE FLANGE.....	223
MANIFOLD GP - INLET.....	55	ROTOR GP - SWIVEL.....	391
MIRROR GP - REAR VIEW.....	550		
MONITOR & MTG GP - OPERATOR.....	528	S	
MONITOR GP - OPERATOR.....	529	SCREEN GP.....	242
MOTOR & MTG GP - SWING.....	382	SEAT BELT GP.....	567
MOTOR & MTG GP - TRAVEL.....	386	SEAT GP.....	559
MOTOR AS - WINDOW WIPER.....	524	SEPARATOR - WATER.....	63.01
MOTOR GP - SWING.....	383		
MOTOR GP - TRAVEL.....	388		

INDEX

Name	Page	Name	Page
SERVICE KIT.....	284	TIP GP - SHORT.....	630
SHEET AS.....	180.09		634
SIDECUTTER GP.....	628	TIP GP - WIDE.....	630
SPECIAL AR.....	11		634
SPROCKET GP - NONSEGMENTED.....	166	TOOL AR.....	637
STARTING MOTOR GP - ELECTRIC.....	146	TOOL GP.....	638
STICK AR - COUPLER.....	597.01	TRACK ADJUSTER & RECOIL GP.....	211
STICK AR - HOE.....	595	TRACK GP.....	226
STICK GP.....	610	TURBOCHARGER GP.....	50
STICK GP - COUPLER.....	612.01		
STICK GP - HOE.....	604		
	612	V	
SUPPORT GP - SEAT.....	558	VALVE & MOUNTING GP.....	405
SUSPENSION GP - SEAT.....	564	VALVE AR.....	444
SWITCH AS.....	103.01	VALVE AS.....	443
	163	VALVE AS - BALL.....	442
	165	VALVE GP.....	422
SWITCH AS - DISCONNECT.....	100	VALVE GP - CHECK.....	450
SWITCH AS - MAGNETIC.....	101	VALVE GP - CONTROL.....	410
SWITCH AS - ROLLER.....	164		427
SWITCH AS - ROTARY.....	117	VALVE GP - CUSHION CROSSOVER RLF.....	376
SWITCH GP - START.....	116	VALVE GP - FLOW CONTROL & RELIEF.....	468
SWIVEL GP.....	390	VALVE GP - MAIN CONTROL.....	407.01
		VALVE GP - PILOT.....	392
T			424
			454
TANK & FILTER GP - HYDRAULIC.....	238	VALVE GP - PILOT RELIEF.....	472
TANK & MTG GP - FUEL.....	66		475
TANK & MTG GP - HYDRAULIC.....	236	VALVE GP - PRESS REDUCING SOL.....	464
TANK AS - WINDOW WASHER.....	536	VALVE GP - PRESSURE REDUCING.....	448
TANK GP - FUEL.....	68	VALVE GP - RELIEF.....	438
TIMER AS.....	104		465
	162		469
TIP GP.....	632		472.02
	636	VALVE GP - SELECTOR.....	446
TIP GP - ABRASION.....	631	VALVE GP - SHUTTLE.....	476
	635	VALVE GP - SOLENOID.....	444.01
TIP GP - LONG.....	629		449
	633	VALVE GP - TRACTION CONTROL.....	453
TIP GP - PENETRATION.....	631	VALVE MECHANISM GP.....	16
	635	VISOR GP - PROTECTION - RAIN.....	547

INDEX

Name	Page	Name	Page
VISOR GP - SUN.....	548		

W

WASHER GP - WINDOW	534
WINDOW AS	521
WINDOW GP.....	512
	517
WINDOW GP - DOOR.....	508
WIPER & WASHER GP - WINDOW	532
WIPER AR - WINDOW	530
WIPER GP - WINDOW	522
WIRING GP	128.01
	130
	132
	136
WIRING GP - CAB.....	118
WIRING GP - CONSOLE	105
WIRING GP - LOWER WIPER	129
WIRING GP - QUICK COUPLER.....	141.01
WRENCH	640

MACHINE ARRANGEMENT

Consists of :

			Page
1	255-2978	COVER GP.....	185.05
1	262-9385	HOOD & GUARD GP.....	180.02
1	262-9402	GUARD GP-BOTTOM.....	185.01

H89084E 00

262-9342 SPECIAL AR
An Attachment

ENGINE ARRANGEMENT

Consists of :

			Page
1	222-8190	ENGINE AR.....	11.01
1	205-6683	FAN GP-SUCTION	42

H83456E 01

201-3838 ENGINE AR

Consists of :

			Page
1	201-3879	ENGINE AR.....	12
1	222-8199	PULLEY GP.....	31.01

THE FOLLOWING REPAIR KIT IS AVAILABLE:

1	272-4690	LONG BLOCK KIT	
---	----------	----------------	--

H91425E 00

222-8190 ENGINE AR
S/N FBB 1-01467, GAB 1-00304
Part of 201-3838-Page11.01

ENGINE ARRANGEMENT

Consists of :

		Page
1	201-3879 ENGINE AR.....	12
1	239-6664 PULLEY GP.....	31.02

THE FOLLOWING REPAIR KITS ARE AVAILABLE:

1	272-4690 LONG BLOCK KIT	
---	-------------------------	--

H91426E 01

222-8190 ENGINE AR
S/N FBB 01468-(T06.02), GAB 00305-(T06.02)
Part of 201-3838-Page11.01

Consists of :

		Page
1	287-0094 ENGINE AR.....	13.03
1	239-6664 PULLEY GP.....	31.02

THE FOLLOWING REPAIR KITS ARE AVAILABLE:

1	272-4690 LONG BLOCK KIT	
---	-------------------------	--

HA0121E 00

287-0075 ENGINE AR
S/N FBB (T06.03)-Up, GAB (T06.03)-Up

ENGINE ARRANGEMENT

Consists of :

			Page
BASIC ENGINE			
1	178-6516	PAN GP-OIL.....	29
1	178-6512	CAMSHAFT GP.....	22
1	212-8549	CRANKSHAFT GP.....	21
1	212-8546	CYLINDER BLOCK GP.....	18
1	212-8543	CYLINDER HEAD GP.....	14
1	212-8544	VALVE MECHANISM GP.....	16
1	212-8545	COVER GP-VALVE MECHANISM.....	20
1	205-6792	FLYWHEEL GP.....	27
1	196-7972	HOUSING GP-FLYWHEEL.....	28
1	212-8550	GEAR GP-FRONT.....	26
1	212-8547	HOUSING GP-FRONT.....	24
1	212-8548	PISTON & ROD GP.....	23
1	178-6531	MOUNTING GP-ALTERNATOR.....	31
LUBRICATION SYSTEM			
1	212-8554	FILTER GP-ENGINE OIL.....	34
1	178-6524	LINES GP-ENGINE OIL.....	32
1	178-6502	BREATHER GP.....	33
1	51-7770	LINES GP-TURBOCHARGER OIL.....	36

H83458E 05

ENGINE ARRANGEMENT

Consists of :

			Page
COOLING SYSTEM			
1	212-8555	PUMP GP-WATER.....	45
1	212-8557	LINES GP-WATER.....	46
1	178-6584	COOLER GP-ENGINE OIL.....	44
1	212-8556	FAN GP-SUCTION.....	47
AIR INLET AND EXHAUST SYSTEM			
1	212-8551	MANIFOLD GP-INLET.....	55
1	212-8552	MANIFOLD GP-EXHAUST.....	56
1	51-8018	TURBOCHARGER GP.....	50
1	212-8615	MUFFLER GP.....	52
FUEL SYSTEM			
1	212-8559	PUMP GP-FUEL INJECTION.....	61.01
1	212-8560	FILTER GP-FUEL.....	58
1	212-8558	LINES GP-FUEL.....	60
6	212-8470	NOZZLE GP-UNIT INJECTOR.....	57
ELECTRICAL AND STARTING SYSTEM			
1	125-2963	MOUNTING GP-STARTING MOTOR.....	145
1	125-2988	STARTING MOTOR GP-ELECTRIC.....	146
1	212-8561	ALTERNATOR GP-CHARGING.....	150

H83459E 05

201-3879 ENGINE AR (2/2)
 S/N FBB 1-01467, GAB 1-00304
 Part of 222-8190-Page11.01

ENGINE ARRANGEMENT

Consists of :

			Page
BASIC ENGINE			
1	178-6516	PAN GP-OIL.....	29
1	178-6512	CAMSHAFT GP.....	22
1	212-8549	CRANKSHAFT GP	21
1	212-8546	CYLINDER BLOCK GP	18
1	212-8543	CYLINDER HEAD GP.....	14
1	212-8544	VALVE MECHANISM GP	16
1	212-8545	COVER GP-VALVE MECHANISM	20
1	205-6792	FLYWHEEL GP.....	27
1	196-7972	HOUSING GP-FLYWHEEL	28
1	212-8550	GEAR GP-FRONT	26
1	212-8547	HOUSING GP-FRONT	24
1	212-8548	PISTON & ROD GP.....	23
1	178-6531	MOUNTING GP-ALTERNATOR.....	31
LUBRICATION SYSTEM			
1	212-8554	FILTER GP-ENGINE OIL	34
1	178-6524	LINES GP-ENGINE OIL.....	32
1	178-6502	BREATHER GP	33
1	51-7770	LINES GP-TURBOCHARGER OIL	36

HA0124E 09