



318C LN Track-Type Excavator

Powered by 3066 Engine

SERIAL NUMBER

CWP1 To Last Built(Vehicle)

7JK52701 To Last Installed(Engine)

HOW TO USE THE PARTS MANUAL

Caterpillar Parts Manuals include illustrations of the groups or assemblies which make up the machine. These illustrations show the standard components plus many of the attachments available for the machine.

The alphabetical index located in the front part of the book should be used to determine the page number on which specific illustrations are shown. Reference to those pages will identify each of the individual serviceable parts.

Captions

The caption under each illustration identifies the part number and name of the group or assembly shown. If more than one illustration is included for any group, the caption identifies the specific machine serial numbers to which each illustration applies. In some cases it is not possible to determine the specific machine serial numbers to which different illustrations are applicable. In those cases the caption identifies the illustration as "First Type", "Second Type", etc. Reference to the actual group or assembly is necessary in those cases to determine which illustration should be used.

Captions provide additional information such as page numbers where illustrations of sub assemblies are shown, information regarding quantities used and other information intended to assist the user in determining parts needs.

This information indicates the effective serial number or effective date on which changes became effective.

Example :

D95.05- : Applicable on and after May 1995

↑
—— D indicates the nineteen hundreds.

T00.05- : Applicable on and after May 2000

↑
—— T indicates the two thousands.

Indented Part Names

Within each illustration is a parts list identifying each serviceable part in the illustration. When a part name is indented in this list, it means that serviceable item is a part of the serviceable item under which it is indented.

Abbreviations and Symbols

R.H. Right Hand } Refers to the side of
L.H. Left Hand } the machine as viewed
} from the operator's
} compartment.

L Length
T Thickness
Z Number of Gear Teeth
O.D. Outside Diameter
I.D. Inside Diameter
O.S. Over Size
U.S. Under Size
N/S Not Serviced
AS Assembly
NOM Nominal

Abbreviations of Wire Colors

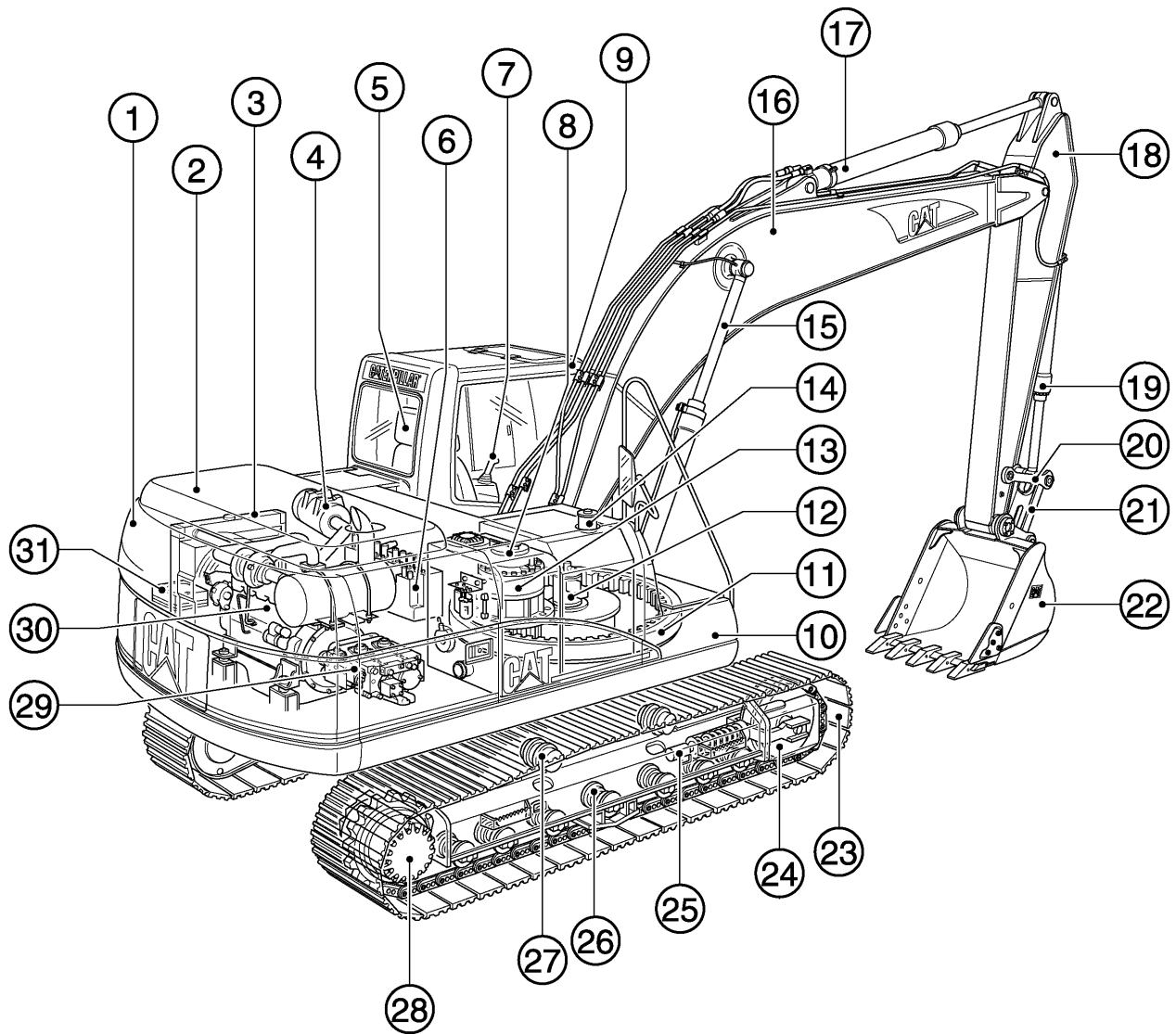
RD :Red	BR :Brown
WH :White	GN :Green
OR :Orange	BU :Blue
YL :Yellow	T :Tan
PK :Pink	DK/BU :Dark Blue
BK :Black	DK/GN :Dark Green
GY :Gray	LT/BU :Light Blue
PU :Purple	LT/GN :Light Green

Note

Continuing improvement and advancement of product design may cause changes to your machine which may not be included in this publication. Each publication is reviewed and revised, as required, to update and include these changes in later editions.

Whenever a question arises regarding your Caterpillar product, or this publication, please consult your Caterpillar dealer for the latest available information.

MODEL VIEW



	PAGE		PAGE		PAGE
① Counterweight	196	⑫ Swivel	380	⑳ Bucket	595
② Engine Hood	174	⑬ Swing Drive	366	㉑ Track	221
③ Radiator & Oil Cooler	38	⑭ Fuel Tank	71	㉒ Idler	205
④ Air Cleaner	47	⑮ Boom Cylinder	254	㉓ Track Adjuster	209
⑤ Operator Seat	539	⑯ Boom	576	㉔ Track Roller	216
⑥ Control Valve	400	⑰ Stick Cylinder	258	㉕ Carrier Roller	216
⑦ Control Lever	382	⑱ Stick	580	㉖ Final Drive	169
⑧ Hydraulic Tank	224	㉒ Bucket Cylinder	262	㉗ Pump	231
⑨ Cab	471	㉓ Link	588	㉘ Engine	11
⑩ Storage Box	191	㉔ Rod	588	㉙ Battery	74
⑪ Swing Bearing	200				

REPLACEMENT ITEMS

The following chart provides a convenient listing of those items which require occasional replacement during normal operation or maintenance.

DESCRIPTION	PART NO.	QTY. USED	PAGE NO.
Filter			
Air Conditioner Filter	178-5479	1	551
Air Filter			
Secondary Filter Assembly	135-5787	1	48
Primary Filter Assembly	135-5788	1	48
Cab Air Filter	293-1184	1	553
Engine Oil Filter	1R-0739	1	35
Fuel Filter	1R-0751	1	59
Hydraulic Oil Drain Filter	093-7521	1	244
Hydraulic Oil Pilot Filter	5I-8670	1	245.02
Hydraulic Oil Pilot Filter	126-1813	1	245.01
Hydraulic Tank Return Filter	126-2081	1	247
	179-9806	1	249
Water Separator Element	287-0222	1	70.03
V-Belt			
Alternator & Fan V-Belt	217-5420	1	30.02
Refrigerant Compressor V-Belt	255-3017	1	569

LIST OF ATTACHMENTS

The following chart provides a convenient listing of attachments with their reference page numbers as a quick reference for parts ordering.

	Consists of:	Page
199-9359	AIR PREFILTER	47.01
170-6821	ALARM, TRAVEL	154
	BOOM	
199-9345	R-BOOM, REACH 5.3M	570
	BUCKET	
	EXCAVATION (X)	
165-0958	B Family 1100MM Wide-0.8Cu.M.-Adapter Size J300	590
168-3008	B Family 1110MM Wide-0.8Cu.M.-Adapter Size (ESCO)	592
165-0960	B Family 1220MM Wide-0.9Cu.M.-Adapter Size J300	590
168-2998	B Family 1280MM Wide-1.0Cu.M.-Adapter Size J300	591
	EXTREME SERVICE EXCAVATION (EX)	
165-0959	B Family 1100MM Wide-0.8Cu.M.-Adapter Size J350	591
	BUCKET LINKAGE	
163-7739	B FAMILY RM (2.2B) STICK	573
199-9350	B FAMILY R3.2B, RL (2.7B) STICK	573
211-6297	FOR DEMOLITION	574
	CAB	
171-7345	METAL ROOF HATCH CAB	472
161-3739	SKYLIGHT HATCH CAB	471
208-4442	COUNTERWEIGHT	197
	FILM	
211-6295	DEMOLITION	622
	GUARD	
199-9354	BOTTOM, HEAVY DUTY	185
134-8875	SWIVEL	188
126-2170	BUCKET CYLINDER (For Demolition)	267
178-5549	FOGS	520
171-7485	Cab Front	522
164-0497	Cab Top	521
212-2854	SIDE RUBBER BUMPER	190
	TRACK GUIDE	
120-7171	Full Length	215
120-7170	Track End Guide	214

LIST OF ATTACHMENTS

	Consists of:	Page
164-0534	WINDSHIELD, FRONT (Full Net)	524
164-0535	WINDSHIELD, FRONT (Half Net)	526
197-0318	HAND CONTROL PATTERN CHANGER (4 WAYS)	425
201-4426	HEATER & DEFROSTER	559
HYDRAULIC SYSTEMS, AUXILIARY		
BOOM LINE GROUPS		
R-Boom, Reach 5.3M		
197-2273	Drain Lines	298
193-6584	High Pressure Lines	280
197-2272	Medium Pressure Lines	284
216-6647	Quick Coupler Lines	570
210-9896	With Slow Return Valve	276
210-9763	QUICK COUPLER LINES (On Upper Frame And Control) Type 1	313
216-6670	QUICK COUPLER LINES (On Upper Frame And Control) Type 2	313
STICK LINE GROUPS		
R2.2B Stick		
197-2284	Drain Lines	302
193-6422	High Pressure Lines	281
197-2283	Medium Pressure Lines	296
R2.7B Stick		
197-2280	Drain Lines	301
193-6421	High Pressure Lines	281
197-2279	Medium Pressure Lines	294
216-6516	Quick Coupler Lines	572.01
R3.2B Stick		
197-2276	Drain Lines	300
193-6424	High Pressure Lines	280
197-2275	Medium Pressure Lines	292
TOOL CONTROL		
200-6601	Auxiliary Pump	311
Combined Function		
200-6595	2 Pump	309
165-1119	2 Pump (Medium Pressure)	310
200-6653	For Demolition	312
Double Function		
200-6598	1 Pump (Pedal Control)	309
200-6639	1 Pump (Joystick Control)	311

LIST OF ATTACHMENTS

	Consists of:	Page
	Single Function	
200-6594	1 Pump	308
200-6597	2 Pump	308
212-5390	HYDRAULIC TANK	225
196-1420	LARGE BOX COVER	506
	LIGHT	
204-1800	R-BOOM, RIGHT SIDE	158
	WORKING, CAB MOUNT (Time Delay)	
204-1810	For Use With Cab Guard	161.01
163-6631	Without Cab Guard	160
	OPTIONAL SEAT	
171-7352	KAB T1P SEAT (Vinyl)	541.01
178-5624	KAB T8P SEAT	541
164-0477	HEADREST (KAB 528P, KAB T8P Seat)	545
200-7294	QUICK CPUPLER	575
	RADIO	
163-6634	AM	517
163-6633	AM/FM	518
163-6636	AM/FM (With Cassette)	519
161-3750	RAIN PROTECTOR, CAB FRONT	528
	SIDE CUTTER	
7Y-0729	B FAMILY	599
112-2481	B FAMILY (Heavy Duty)	600
	STARTING, COLD WEATHER	
211-6363	FILM (32WR Hydraulic Oil Package)	623
204-1943	STARTING AID (CWP1-00164)	80
163-6646	STARTING AID (CWP00165-Up)	81
	STICK	
	STICK-FOR THE REACH (5.3MM) BOOM ONLY	
199-9348	R2.2B Stick	572
199-9347	R2.7B Stick	571
211-6296	R2.7B Stick (Heavy Duty)	572
199-9346	R3.2B Stick	571
161-3751	SUN VISOR	529

LIST OF ATTACHMENTS

Consists of:		Page
TIP		
ADAPTER SIZE J300		
8E-3756	Abrasion, Heavy Duty	603
9J-3167	Long	601
8E-3751	Long, Heavy Duty	601
3G-3237	Penetration	603
9W-9188	Sharp-Center	604
9W-9189	Sharp-Corner	604
9J-3175	Short	602
4T-2215	Wide	602
ADAPTER SIZE J350		
8E-3757	Abrasion, Heavy Duty	605.02
8J-4955	Long	605
8E-3752	Long, Heavy Duty	605
3G-3236	Penetration	605.02
9W-6472	Sharp-Center	605.03
9W-6473	Sharp-Corner	605.03
8J-4954	Short	605.01
8J-4953	Wide	605.01
TOOL		
169-7580	TOOL KIT	606
117-4166	WRENCH (For Demolition)	608
TRACK		
194-1159	600MM TRIPLE GROUSER	221
207-0261	WIPER, LOWER WINDSHIELD	509
163-6629	12V-7A POWER SUPPLY SOCKET	131

INDEX

Name	Page	Name	Page
A			
ACCUMULATOR GP	252	CONTROL & MTG GP - ELECTRONIC	142
ADJUSTER GP - BUCKET	598	CONTROL AR - AUXILIARY	308
AIR CLEANER AR	47.01	CONTROL AR - QUICK COUPLER	313
AIR CLEANER GP	47	CONTROL GP - ELECTRIC HAND	153
	47.02	CONTROL GP - ELECTRONIC	152
AIR CONDITIONER & MOUNTING GP	548	CONTROL GP - GOVERNOR	68
AIR CONDITIONER GP	547	CONTROL GP - HYDRAULIC	392
	550	CONTROL GP - PILOT OPERATED HYD	386
ALARM GP	130		390
ALARM GP - TRAVEL	154	COOLER GP - ENGINE OIL	45
ALTERNATOR GP - CHARGING	150	COUNTERWEIGHT GP	196
ARM AS - WIPER	504	COUPLER AR - QUICK	575
B			
BATTERY & WIRING GP	74	COUPLER GP - QUICK	589.01
BATTERY & WIRING GP - COLD WEATH	80	COUPLING GP - FLEXIBLE	233
BLOCK GP - HYDRAULIC	250	COUPLING GP - PUMP	232
BOOM AR - 1 PIECE LONG	570	COVER GP	488
BOOM AR - COUPLER	570		505
BOOM GP	576	COVER GP - HOOD	183
BOX & MTG GP - STORAGE	191		183.02
BOX GP - STORAGE	192	COVER GP - STORAGE BOX	194
BREATHER GP	32	COVER GP - VALVE MECHANISM	20
BUCKET & ADJUSTER GP	592	CRANKSHAFT GP	21
BUCKET AR	590	CYLINDER & LINES GP - BOOM	253
BUCKET AS - EXCAVATION	595	CYLINDER & LINES GP - BUCKET	260
BUMPER GP - SIDE	190	CYLINDER & LINES GP - STICK	257
C			
CAB GP	471	CYLINDER & SEAL GP	266.02
CAB GP (BASIC)	473	CYLINDER & SEAL GP - BOOM	254
CAB GP - EXTERIOR	486	CYLINDER & SEAL GP - BUCKET	262
CAB GP - INTERIOR	478	CYLINDER & SEAL GP - STICK	258
CAMSHAFT GP	22	CYLINDER BLOCK GP	18
CARTRIDGE AS - TURBOCHARGER	53	CYLINDER HEAD GP	14
COMPRESSOR GP - REFRIGERANT	568	D	
CONDENSER & MTG GP - REFRIGERANT	567	DOOR GP - CAB	489
CONSOLE GP	533	DOOR GP - HOOD	181
CONSOLE GP - OPERATOR	532		182
		DRIVE GP - PUMP	242
		DRIVE GP - SWING	366
		DUCT AS	554
		DUCT GP - AIR	552

INDEX

Name	Page	Name	Page
LINES GP - ENGINE OIL	31		
LINES GP - FRONT.....	340		
LINES GP - FUEL.....	60		
	70		
LINES GP - GREASE	587		
LINES GP - HEATER.....	564		
LINES GP - OIL DRAIN	37		
LINES GP - PILOT.....	314		
LINES GP - PUMP.....	306		
LINES GP - QUICK COUPLER	303.01		
LINES GP - RETURN & FILTER	362		
LINES GP - STICK	277		
LINES GP - STICK CYLINDER.....	270		
LINES GP - SWING MOTOR.....	364		
LINES GP - TRAVEL MOTOR	304		
LINES GP - TURBOCHARGER OIL	36		
LINES GP - WATER.....	43		
LINK AS.....	535		
LINK AS - TRACK.....	222		
LINKAGE AR - BUCKET.....	573		
LINKAGE GP - BUCKET	588		
LITERATURE GP	547		
 M 			
MANIFOLD GP - EXHAUST	56		
MANIFOLD GP - INLET.....	55		
MIRROR GP - REAR VIEW.....	530		
MONITOR & MTG GP - OPERATOR	512		
MONITOR GP - OPERATOR.....	513		
MOTOR & MTG GP - SWING	372		
MOTOR & MTG GP - TRAVEL	377		
MOTOR AS - WINDOW WIPER	503		
MOTOR GP - SWING.....	373		
MOTOR GP - TRAVEL.....	378		
MOUNTING GP - ALTERNATOR.....	30.01		
MOUNTING GP - ENGINE.....	30		
MOUNTING GP - GREASE GUN.....	184		
MOUNTING GP - STARTING MOTOR.....	144		
MOUNTING GP - VALVE.....	396		
MUFFLER GP.....	54		
		N	
		NOZZLE GP - UNIT INJECTOR	57
		P	
		PAN GP - OIL.....	29
		PANEL GP - CIRCUIT BREAKER	90
		PIN GP.....	598.01
		PISTON & ROD GP	23
		PLATE & FILM GP	610
		PLATFORM GP - OPERATOR.....	531
		PLUG GP.....	421
			470.03
		PULLEY GP	30.02
		PUMP & MOUNTING GP	231
		PUMP AS - WATER	42
		PUMP GP - FUEL INJECTION	62
		PUMP GP - MAIN HYDRAULIC	234
		R	
		RADIATOR & HYD OIL COOLER GP	38
		RADIO GP - AM.....	517
		RADIO GP - AM/FM.....	518
		ROLLER AR - TRACK & CARRIER	216
		ROLLER GP - TRACK CARRIER	217
		ROLLER GP - TRACK - SINGLE FLANGE	218
		ROTOR GP - SWIVEL.....	381
		S	
		SCREEN GP.....	230
		SEAT BELT GP	544
		SEAT GP.....	539
		SEPARATOR - WATER	70.03
		SIDECUTTER GP	599
		SPROCKET GP - NONSEGMENTED.....	168
		STARTING MOTOR GP - ELECTRIC	146
		STICK AR - COUPLER	572.01
		STICK AR - HOE.....	571
		STICK GP	584
		STICK GP - COUPLER	586.01
		STICK GP - HOE	580

INDEX

Name	Page	Name	Page
WIRING GP	131		
	133		
WIRING GP - CAB.....	120		
WIRING GP - CONSOLE	106		
WIRING GP - LOWER WIPER	105		
WRENCH	608		

ENGINE ARRANGEMENT

Consists of :

		Page
1	201-3714 ENGINE AR.....	12
1	222-8207 PULLEY GP.....	30.02

H83868E 00

222-8203 ENGINE AR

ENGINE ARRANGEMENT

Consists of :

			Page
BASIC ENGINE			
1	217-5478	PAN GP-OIL.....	29
1	178-6512	CAMSHAFT GP.....	22
1	178-6518	CRANKSHAFT GP.....	21
1	217-5476	CYLINDER BLOCK GP.....	18
1	212-8543	CYLINDER HEAD GP.....	14
1	212-8544	VALVE MECHANISM GP.....	16
1	212-8545	COVER GP-VALVE MECHANISM.....	20
1	205-6792	FLYWHEEL GP.....	27
1	196-7972	HOUSING GP-FLYWHEEL.....	28
1	178-6519	GEAR GP-FRONT.....	26
1	217-5477	HOUSING GP-FRONT.....	24
1	212-8548	PISTON & ROD GP.....	23
1	178-6531	MOUNTING GP-ALTERNATOR.....	30.01
LUBRICATION SYSTEM			
1	212-8653	FILTER GP-ENGINE OIL.....	34
1	178-6581	LINES GP-ENGINE OIL.....	31
1	178-6540	BREATHER GP.....	32
1	51-7770	LINES GP-TURBOCHARGER OIL.....	36
COOLING SYSTEM			
1	178-6633	PUMP AS-WATER.....	42
1	205-6796	LINES GP-WATER.....	43

H94056E 06

ENGINE ARRANGEMENT

Consists of :

			Page
COOLING SYSTEM			
1	178-6584	COOLER GP-ENGINE OIL.....	45
1	178-6526	FAN GP-SUCTION	44
AIR INLET AND EXHAUST SYSTEM			
1	217-5479	MANIFOLD GP-INLET.....	55
1	217-5594	MANIFOLD GP-EXHAUST	56
1	233-1244	LINES GP-AIR	50
1	51-7952	TURBOCHARGER GP.....	52
1	212-8553	MUFFLER GP.....	54
FUEL SYSTEM			
1	217-5481	PUMP GP-FUEL INJECTION	62
1	217-5551	FILTER GP-FUEL.....	58
1	217-5480	LINES GP-FUEL	60
6	212-8470	NOZZLE GP-UNIT INJECTOR	57
ELECTRICAL AND STARTING SYSTEM			
1	125-2963	MOUNTING GP-STARTING MOTOR.....	144
1	272-4774	STARTING MOTOR GP-ELECTRIC	146
1	212-8622	ALTERNATOR GP-CHARGING	150
THE FOLLOWING REPAIR KIT IS AVAILABLE:			
1	239-6685	CAP KIT	

H94057E 06

ENGINE ARRANGEMENT

Consists of :

			Page
BASIC ENGINE			
1	217-5478	PAN GP-OIL.....	29
1	178-6512	CAMSHAFT GP.....	22
1	178-6518	CRANKSHAFT GP	21
1	217-5476	CYLINDER BLOCK GP	18
1	212-8543	CYLINDER HEAD GP.....	14
1	212-8544	VALVE MECHANISM GP	16
1	212-8545	COVER GP-VALVE MECHANISM	20
1	205-6792	FLYWHEEL GP.....	27
1	196-7972	HOUSING GP-FLYWHEEL.....	28
1	178-6519	GEAR GP-FRONT	26
1	217-5477	HOUSING GP-FRONT	24
1	233-1157	PISTON & ROD GP.....	23.01
1	178-6531	MOUNTING GP-ALTERNATOR.....	30.01
LUBRICATION SYSTEM			
1	212-8653	FILTER GP-ENGINE OIL	34
1	178-6581	LINES GP-ENGINE OIL.....	31
1	178-6540	BREATHER GP	32
1	51-7770	LINES GP-TURBOCHARGER OIL	36
COOLING SYSTEM			
1	178-6633	PUMP AS-WATER	42
1	205-6796	LINES GP-WATER.....	43

H94052E 10

201-3714 ENGINE AR (1/2)
 S/N CWP 00166-Up
 Part of 222-8203-Page11

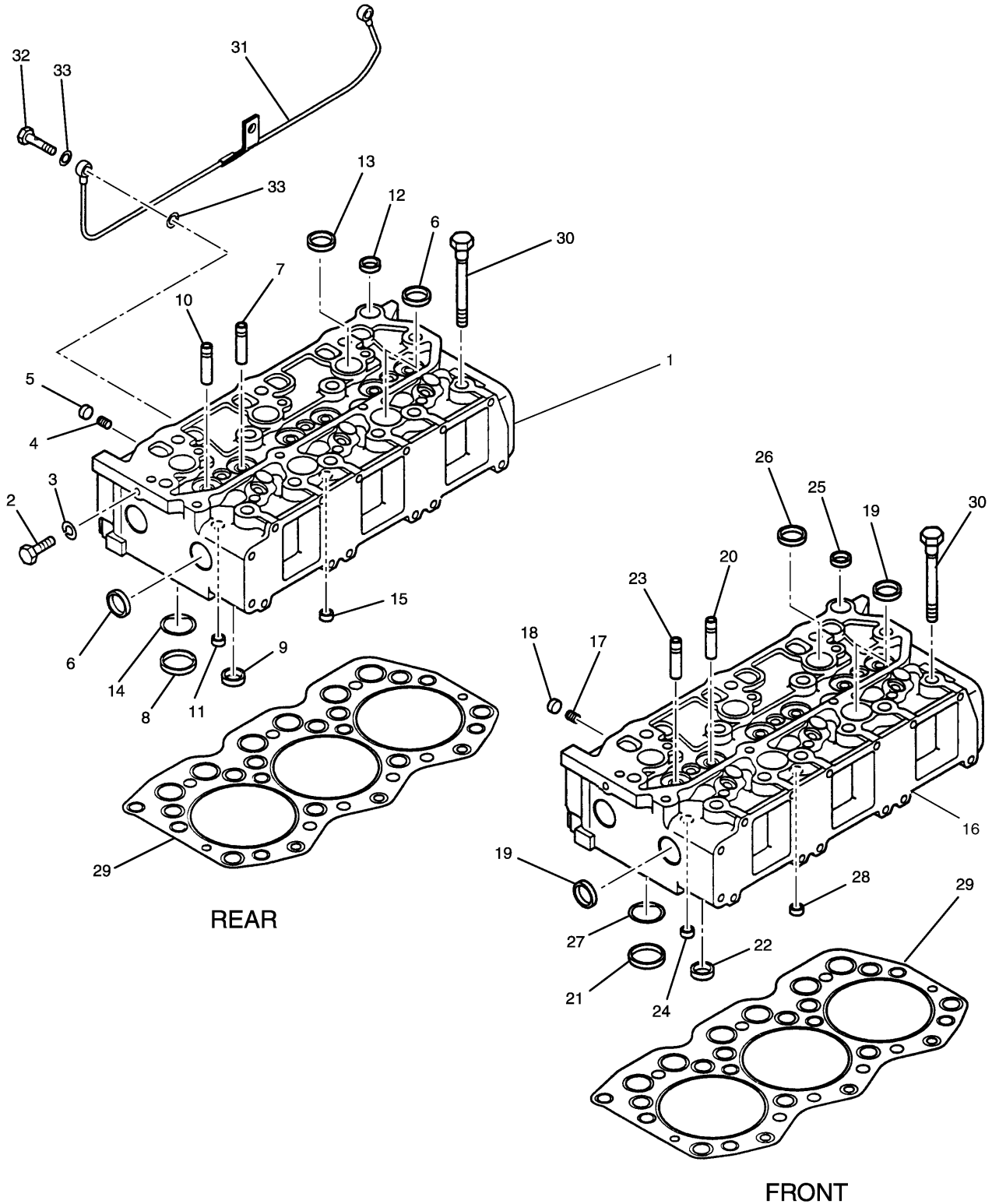
ENGINE ARRANGEMENT

Consists of :

			Page
COOLING SYSTEM			
1	178-6584	COOLER GP-ENGINE OIL.....	45
1	178-6526	FAN GP-SUCTION	44
AIR INLET AND EXHAUST SYSTEM			
1	217-5479	MANIFOLD GP-INLET.....	55
1	217-5594	MANIFOLD GP-EXHAUST	56
1	233-1244	LINES GP-AIR	50
1	233-1159	TURBOCHARGER GP.....	52.01
1	212-8553	MUFFLER GP.....	54
FUEL SYSTEM			
1	233-1160	PUMP GP-FUEL INJECTION.....	67.01
1	217-5551	FILTER GP-FUEL.....	58
1	217-5480	LINES GP-FUEL.....	60
6	233-1161	NOZZLE GP-UNIT INJECTOR.....	57.01
ELECTRICAL AND STARTING SYSTEM			
1	125-2963	MOUNTING GP-STARTING MOTOR.....	144
1	272-4774	STARTING MOTOR GP-ELECTRIC.....	146
1	212-8622	ALTERNATOR GP-CHARGING.....	150
THE FOLLOWING REPAIR KIT IS AVAILABLE:			
1	239-6685	CAP KIT	

H94053E 10

BASIC ENGINE



REAR

FRONT

H82237E 01

212-8543 CYLINDER HEAD GP
Part of 201-3714-Page12

BASIC ENGINE

NOTE	No.	PART No.	QTY	PART NAME	NOTE	No.	PART No.	QTY	PART NAME
	1	212-8562	1	HEAD AS					
	2	51-5591	1	PLUG					
	3	095-2038	1	WASHER					
	4	51-7505	3	PLUG					
	5	099-4388	3	CAP					
	6	51-4915	8	CAP					
	7	183-8173	3	GUIDE (EXHAUST)					
	8	212-8474	3	INSERT (INTAKE)					
	9	51-8012	3	INSERT (EXHAUST)					
	10	183-8172	3	GUIDE (INTAKE)					
	11	51-7583	2	CAP					
	12	212-8563	1	CAP					
	13	212-8475	3	CAP					
	14	212-8473	3	PLATE					
	15	212-8476	2	CAP					
	16	212-8564	1	HEAD AS					
	17	51-7505	3	PLUG					
	18	099-4388	3	CAP					
	19	51-4915	8	CAP					
	20	183-8173	3	GUIDE (EXHAUST)					
	21	212-8474	3	INSERT (INTAKE)					
	22	51-8012	3	INSERT (EXHAUST)					
	23	183-8172	3	GUIDE (INTAKE)					
	24	51-7583	2	CAP					
	25	212-8563	1	CAP					
	26	212-8475	3	CAP					
	27	212-8473	3	PLATE					
	28	212-8476	2	CAP					
	29	222-8331	2	GASKET					
	30	51-7718	26	BOLT (L=125mm)					
	31	183-8215	1	PIPE					
	32	51-5029	2	BOLT (L=17mm)					
	33	095-2038	4	WASHER					

H82237E 01

212-8543 CYLINDER HEAD GP
Part of 201-3714-Page12