

---

# **313C SR Track-Type Excavator**

---

**Powered by 3064 Engine**

**SERIAL NUMBER**

**WSA1 To Last Built(Vehicle)**

**6LK26452 To Last Installed(Engine)**

## HOW TO USE THE PARTS MANUAL

Caterpillar Parts Manuals include illustrations of the groups or assemblies which make up the machine. These illustrations show the standard components plus many of the attachments available for the machine.

The alphabetical index located in the front part of the book should be used to determine the page number on which specific illustrations are shown. Reference to those pages will identify each of the individual serviceable parts.

### Captions

The caption under each illustration identifies the part number and name of the group or assembly shown. If more than one illustration is included for any group, the caption identifies the specific machine serial numbers to which each illustration applies. In some cases it is not possible to determine the specific machine serial numbers to which different illustrations are applicable. In those cases the caption identifies the illustration as "First Type", "Second Type", etc. Reference to the actual group or assembly is necessary in those cases to determine which illustration should be used.

Captions provide additional information such as page numbers where illustrations of sub assemblies are shown, information regarding quantities used and other information intended to assist the user in determining parts needs.

This information indicates the effective serial number or effective date on which changes became effective.

Example :

D95.05- : Applicable on and after May 1995

↑  
—— D indicates the nineteen hundreds.

T00.05- : Applicable on and after May 2000

↑  
—— T indicates the two thousands.

## Indented Part Names

Within each illustration is a parts list identifying each serviceable part in the illustration. When a part name is indented in this list, it means that serviceable item is a part of the serviceable item under which it is indented.

### Abbreviations and Symbols

R.H. Right Hand  
L.H. Left Hand

} Refers to the side of the machine as viewed from the operator's compartment.

L Length  
T Thickness  
Z Number of Gear Teeth  
O.D. Outside Diameter  
I.D. Inside Diameter  
O.S. Over Size  
U.S. Under Size  
N/S Not Serviced  
AS Assembly  
NOM Nominal

#### Abbreviations of Wire Colors

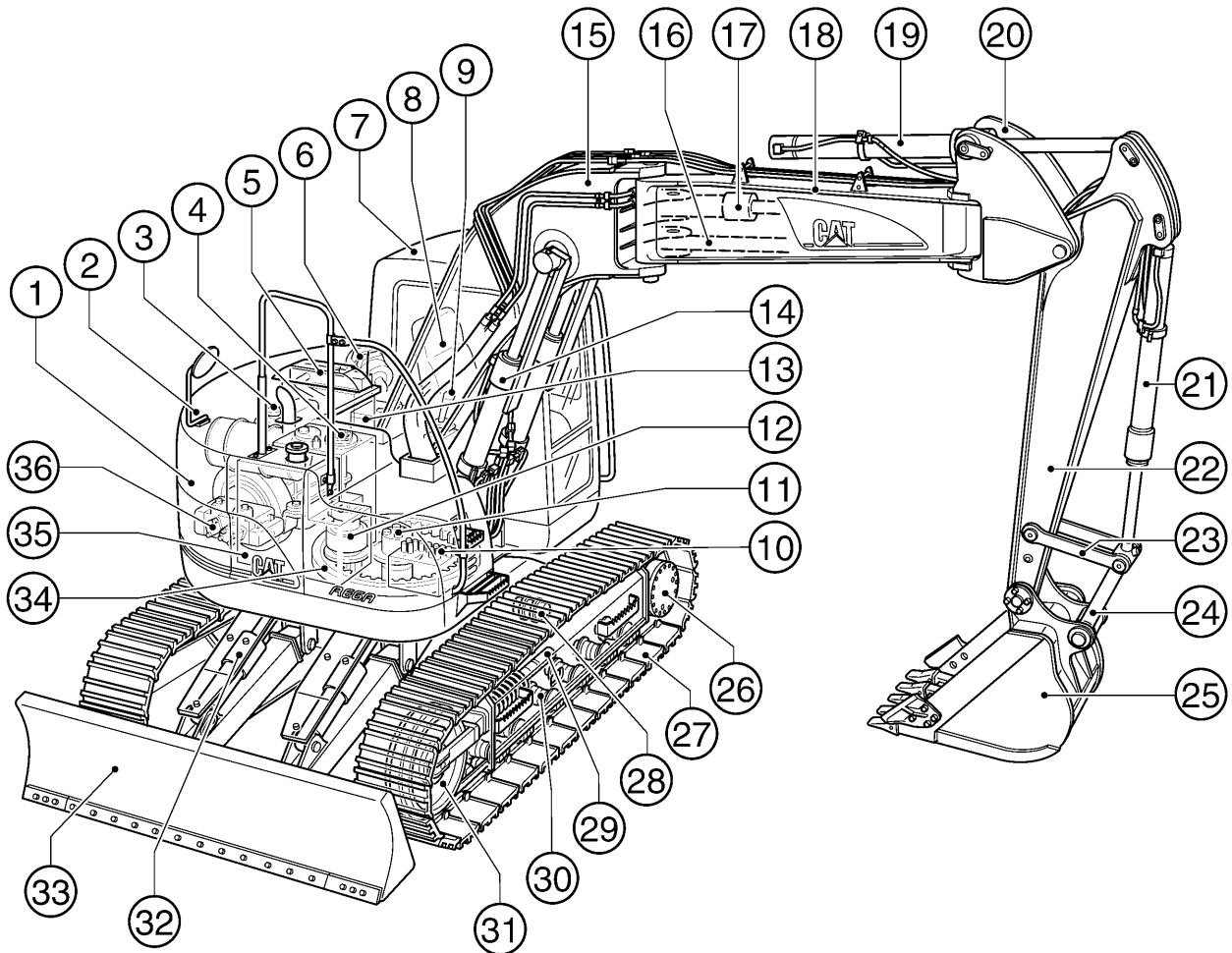
RD :Red	BR :Brown
WH :White	GN :Green
OR :Orange	BU :Blue
YL :Yellow	T :Tan
PK :Pink	DK/BU :Dark Blue
BK :Black	DK/GN :Dark Green
GY :Gray	LT/BU :Light Blue
PU :Purple	LT/GN :Light Green

### Note

Continuing improvement and advancement of product design may cause changes to your machine which may not be included in this publication. Each publication is reviewed and revised, as required, to update and include these changes in later editions.

Whenever a question arises regarding your Caterpillar product, or this publication, please consult your Caterpillar dealer for the latest available information.

# MODEL VIEW



	PAGE		PAGE		PAGE
① Counterweight.....	192	⑬ Battery .....	74	⑳ Bucket .....	434
② Engine Cover .....	166	⑭ Boom Cylinder.....	237	㉑ Final Drive .....	158
③ Engine .....	11	⑮ Lower Boom .....	414	⑳ Track .....	207
④ Hydraulic Tank .....	213	⑯ Offset Bar .....	414	㉒ Carrier Roller .....	203
⑤ Radiator & Oil Cooler.....	38	⑰ Offset Cylinder.....	239	㉓ Track Adjuster.....	202
⑥ Air Cleaner .....	46	⑱ Upper Boom .....	414	⑳ Track Roller .....	203
⑦ Cab.....	355	⑲ Stick Cylinder .....	238	㉔ Idler.....	198
⑧ Operator Seat.....	384	㉒ Boom(Cylinder Stay).....	414	㉕ Blade Cylinder .....	241
⑨ Control Lever .....	300	㉓ Bucket Cylinder .....	240	㉖ Blade .....	422
⑩ Control Valve.....	312	㉔ Stick.....	418	㉗ Swing Bearing .....	194
⑪ Swivel .....	298	㉕ Link .....	425	㉘ Fuel Tank.....	57
⑫ Swing Drive .....	290	㉖ Rod .....	425	㉙ Pump.....	217

# REPLACEMENT ITEMS

The following chart provides a convenient listing of those items which require occasional replacement during normal operation or maintenance.

DESCRIPTION	PART NO.	QTY. USED	PAGE NO.
<b>Filter</b>			
Air Conditioner Filter	207-0105	1	395
	284-4568	1	395.02
<b>Air Filter</b>			
Primary Filter Assembly	131-8902	1	47
Cab Air Filter	229-9047	1	398.01
Engine Oil Filter	1R-0739	1	35
Fuel Filter	1R-0751	1	61
Hydraulic Oil Drain Filter	093-7521	1	226
Hydraulic Oil Pilot Filter	126-1813	1	227.01
	5I-8670	1	227.02
Hydraulic Oil Tank Return Filter	126-2081	1	229
	179-9806		229.01
<b>V-Belt</b>			
Alternator & Fan V-Belt Set	217-5420	1	31
Refrigerant Compressor V-Belt	068-5590	1	407
	1W-5555	1	407.02
	255-3015	1	407.04

# LIST OF ATTACHMENTS

The following chart provides a convenient listing of attachments with their reference page numbers as a quick reference for parts ordering.

<b>Consists of:</b>		<b>Page</b>
193-3488	<b>ALARM, TRAVEL</b> .....	144
	<b>BOOM</b>	
194-8950	POWER OFFSET BOOM .....	410
283-8802	<b>Product Link Japan</b> .....	135.01
	<b>BUCKET</b>	
	EXCAVATION (X)	
150-2239	600MM Wide-0.32Cu.M.-Adapter Size J250 (WSA1-T04.11) .....	430
250-6367	564MM Wide-0.32Cu.M.-Adapter Size J250 (WSA T04.12-Up) .....	430.01
150-2240	700MM Wide-0.38Cu.M.-Adapter Size J250 (WSA1-T04.11) .....	430
250-6370	664MM Wide-0.38Cu.M.-Adapter Size J250 (WSA T04.12-Up) .....	430.01
150-2241	895MM Wide-0.45Cu.M.-Adapter Size J250 (WSA1-T04.11) .....	431
250-6373	794MM Wide-0.45Cu.M.-Adapter Size J250 (WSA T04.12-Up) .....	431
	<b>BUCKET LINKAGE</b>	
202-1526	CASTING TYPE (WSA1-00369) .....	412
251-2867	CASTING TYPE (WSA00370-Up) .....	413
202-1586	FABRICATION TYPE (WSA1-00369) .....	412
251-2868	FABRICATION TYPE (WSA00370-Up) .....	413
	<b>GUARD</b>	
214-1228	CAB FRONT (Full Net) .....	370
214-1229	CAB FRONT (Half Net) .....	370
206-3279	<b>HAND CONTROL PATTERN CHANGER (4 Ways)</b> .....	270
201-4509	<b>HEATER &amp; DEFROSTER (WSA1-00295)</b> .....	399
225-5719	<b>HEATER &amp; DEFROSTER (WSA00296-Up)</b> .....	399
	<b>LIGHT</b>	
213-0640	POWER OFFSET BOOM, RIGHT SIDE .....	151
197-4397	WORKING, CAB MOUNTED (Time Delay) .....	148
178-5459	<b>MIRROR-REAR VIEW, CAB LEFT</b> .....	376
	<b>OPTIONAL SEAT</b>	
207-0279	KAB T1P SEAT (Vinyl Seat) .....	386
255-3100	HEADREST (For KAB T21 Seat) (WSA00370-Up) .....	389.01
	<b>RADIO</b>	
170-9451	AM .....	369
170-9449	AM/FM .....	369

# LIST OF ATTACHMENTS

	Consists of:	Page
4I-7343	<b>SIDECUTTER</b> .....	437
	<b>STARTING, COLD WEATHER</b>	
202-1552	FILM (32WR Hydraulic Oil Package) .....	451
198-2178	STARTING AID .....	79.08
	<b>STICK</b>	
202-1525	2.13M (For Power Offset Boom) .....	411
	<b>TIP</b>	
	ADAPTER SIZE J250	
8E-3755	Abrasion, Heavy Duty .....	440
9J-3169	Long .....	438
8E-3750	Long, Heavy Duty .....	438
100-6462	Penetration .....	440
100-6464	Sharp-Center .....	441
100-6463	Sharp-Corner .....	441
9J-3178	Short .....	439
101-2927	Wide .....	439
211-6274	<b>TOOL KIT</b> .....	442
	<b>TRACK</b>	
	RUBBER BELT	
176-4869	500MM .....	209
	TRIPLE GROUSER	
176-4864	600MM .....	207
176-4865	700MM .....	208
170-9453	<b>12V-7A POWER SUPPLY SOCKET</b> .....	126

# INDEX

Name	Page	Name	Page
<b>A</b>			
ACCUMULATOR GP.....	232	CONSOLE GP - OPERATOR .....	378
ADJUSTER GP - BUCKET .....	436	CONTROL & MTG GP - ELECTRONIC .....	134
ADJUSTMENT GP - HYDRAULIC TRACK .....	202	CONTROL AR.....	135.01
AIR CLEANER GP .....	46	CONTROL GP - BLADE .....	308
AIR CONDITIONER & MOUNTING GP.....	392	CONTROL GP - ELECTRONIC .....	137
AIR CONDITIONER GP.....	391	CONTROL GP - GOVERNOR.....	72
	394	CONTROL GP - HYDRAULIC.....	309
		CONTROL GP - PILOT OPERATED HYD.....	302
			306
ALARM AS - BACKUP .....	145	COOLER GP - ENGINE OIL.....	42
ALARM GP - TRAVEL.....	144	COUNTERWEIGHT GP.....	192
ALTERNATOR GP - CHARGING .....	142	COUPLING GP - PUMP.....	218
ARM AS - WIPER .....	366.01	COVER AS.....	174.01
			175.01
			176.02
			189.01
<b>B</b>			
BATTERY & WIRING AR - COLD WEATH.....	79.08	COVER GP .....	176
BATTERY & WIRING GP .....	74		177
BATTERY & WIRING GP - COLD WEATH .....	80	COVER GP - HOOD .....	173
BLADE & MOUNTING GP.....	422		175
BLADE GP.....	423	COVER GP - STORAGE BOX .....	188
BLOCK GP - HYDRAULIC.....	230	COVER GP - VALVE MECHANISM .....	20
BOOM AR .....	410	CRANKSHAFT GP.....	21
BOOM GP .....	414	CUSHION GP - ARM .....	388
BOSS AS .....	373	CYLINDER & LINES GP - BLADE .....	236
BOX & MTG GP - STORAGE .....	184	CYLINDER & LINES GP - BOOM.....	233
BOX GP.....	367	CYLINDER & LINES GP - BUCKET.....	235
BOX GP - STORAGE .....	185	CYLINDER & LINES GP - OFFSET .....	234
BREATHER GP .....	33	CYLINDER & LINES GP - STICK.....	234
BUCKET & ADJUSTER GP.....	432	CYLINDER & SEAL GP - BLADE.....	241
BUCKET AR .....	430	CYLINDER & SEAL GP - BOOM .....	237
BUCKET AS .....	434	CYLINDER & SEAL GP - BUCKET .....	240
		CYLINDER & SEAL GP - OFFSET .....	239
		CYLINDER & SEAL GP - STICK.....	238
		CYLINDER BLOCK GP.....	18
<b>C</b>			
CAB GP.....	355	CYLINDER GP - BLADE .....	251
CAB GP (BASIC).....	356	CYLINDER GP - BOOM.....	244
CABLE AS .....	84	CYLINDER GP - BUCKET .....	250
CAMSHAFT GP.....	22	CYLINDER GP - OFFSET.....	248
CARTRIDGE AS - TURBOCHARGER .....	56	CYLINDER GP - STICK .....	246
COMPRESSOR GP - REFRIGERANT.....	406	CYLINDER HEAD GP .....	14
CONDENSER & MTG GP - REFRIGERANT .....	408		
CONDENSER GP - REFRIGERANT .....	409		
CONSOLE GP.....	379		

# INDEX

Name	Page	Name	Page
<b>D</b>		<b>H</b>	
DISTRIBUTOR AS .....	396	HANDHOLD GP .....	182
DOOR GP - CAB .....	360	HARNES AS .....	81
DOOR GP - HOOD .....	171		90
DRIVE GP - SWING .....	290		103.07
DUCT GP - AIR .....	397		109
			120
<b>E</b>			130
ELECTRONICS GP .....	136		146
ENGINE AR .....	11		155
<b>F</b>		HARNES AS - CONSOLE .....	98
FAN GP - SUCTION .....	45	HARNES AS - WIRING .....	116
FASTENER GP - SWING & FINAL DR .....	164		127
FENDER & COVER GP .....	186	HATCH GP .....	363
FILM GP .....	450	HEAD GP - PUMP CONTROL .....	224
FILTER GP - ENGINE OIL .....	34	HEADREST AS .....	389.01
FILTER GP - FUEL .....	60	HEATER & MTG GP - CAB .....	400
FILTER GP - HYDRAULIC .....	226	HEATER AR - CAB .....	399
FINAL DRIVE GP .....	158	HEATER GP - CAB .....	401.03
FLYWHEEL GP .....	27	HOOD & GUARD GP .....	166
FRAME AS - UNDERCARRIAGE .....	197	HOOD GP - ENGINE .....	170
FRAME GP - UPPER .....	196	HORN GP - ELECTRIC .....	374
<b>G</b>		HOUSING GP - FILTER .....	231
GEAR & BEARING GP - SWING .....	194	HOUSING GP - FLYWHEEL .....	26
GEAR GP - FRONT .....	24	HOUSING GP - FRONT .....	25
GUARD AR - FRONT WINDOW .....	370	<b>I</b>	
GUARD GP - BLADE CYLINDER .....	261	IDLER GP - FRONT .....	198
GUARD GP - BOOM CYLINDER .....	260	<b>K</b>	
GUARD GP - BOTTOM .....	181	KNOB AS .....	304
GUARD GP - FAN .....	41.01	<b>L</b>	
GUARD GP - FENDER .....	190	LAMP GP - FLOOD .....	152
GUARD GP - FRONT .....	211	LEVER AS .....	381
GUARD GP - FRONT WINDOW .....	371	LIGHTING GP - BOOM .....	150
GUARD GP - SNOW .....	178	LIGHTING GP - CAB .....	148
GUARD GP - TRAVEL MOTOR .....	206		



# INDEX

Name	Page	Name	Page
LIGHTING GP - CHASSIS.....	147	MOUNTING GP - STARTING MOTOR.....	138
LINES GP - AIR.....	49	MOUNTING GP - VALVE.....	310
LINES GP - AIR CONDITIONER.....	402	MUFFLER GP.....	48
LINES GP - BLADE CYL & VALVE.....	284		
LINES GP - BLADE CYLINDER.....	258	<b>N</b>	
LINES GP - BOOM.....	262	NOZZLE GP - UNIT INJECTOR.....	70
LINES GP - BOOM CYLINDER.....	253		
LINES GP - BUCKET CYLINDER.....	257	<b>P</b>	
LINES GP - DRAIN.....	52	PAN GP - OIL.....	28
LINES GP - ENGINE OIL.....	32	PANEL GP - CIRCUIT BREAKER.....	88
LINES GP - FRONT.....	282	PISTON & ROD GP.....	23
LINES GP - FUEL.....	59	PLATE & FILM GP.....	444
	62	PLATFORM GP - OPERATOR.....	377
LINES GP - GREASE.....	420	PULLEY GP.....	31
LINES GP - HEATER.....	404	PUMP & MOUNTING GP.....	217
LINES GP - OFFSET CYLINDER.....	256	PUMP AS - WATER.....	43
LINES GP - OIL DRAIN.....	37	PUMP GP - FUEL INJECTION.....	64
LINES GP - PILOT.....	272	PUMP GP - MAIN HYDRAULIC.....	220
LINES GP - PUMP.....	268		
LINES GP - RETURN & FILTER.....	286	<b>R</b>	
LINES GP - STICK.....	264	RADIATOR & HYD OIL COOLER GP.....	38
LINES GP - STICK CYLINDER.....	255	RADIO GP - AM.....	369
LINES GP - SWING MOTOR.....	288	RADIO GP - AM/FM.....	369
LINES GP - TRAVEL MOTOR.....	266	ROLLER AR - TRACK & CARRIER.....	203
LINES GP - TURBOCHARGER OIL.....	36	ROLLER GP - TRACK CARRIER.....	205
LINES GP - WATER.....	44	ROLLER GP - TRACK - SINGLE FLANGE.....	204
LINK AS - TRACK.....	210		
LINKAGE AR - BUCKET.....	412	<b>S</b>	
LINKAGE GP - BUCKET.....	424	SCREEN GP.....	216
LITERATURE GP.....	390	SEAT BELT GP.....	389
		SEAT GP.....	384
<b>M</b>		SENSOR & MOUNTING GP.....	131
MANIFOLD GP - EXHAUST.....	54	SEPARATOR - WATER.....	59.02
MANIFOLD GP - INLET.....	53	SIDECUTTER GP.....	437
MIRROR GP - REAR VIEW.....	375	SPRING GP - RECOIL.....	201
MONITOR GP - OPERATOR.....	107	SPROCKET GP - NONSEGMENTED.....	157
MOTOR GP - TRAVEL.....	297.01	STARTING MOTOR GP - ELECTRIC.....	140
MOTOR AS - WINDOW WIPER.....	366	STICK AR - HOE.....	411
MOTOR GP - SWING.....	296	STICK GP - HOE.....	418
MOUNTING GP.....	137.01	SUPPORT AS.....	383
MOUNTING GP - ALTERNATOR.....	29		
MOUNTING GP - ENGINE.....	30		
MOUNTING GP - GREASE GUN.....	179		



# ENGINE ARRANGEMENT

Consists of :

			Page
1	201-3871	ENGINE AR.....	12
1	205-6810	PULLEY GP.....	31

H82573E 01

217-5537 ENGINE AR

# ENGINE ARRANGEMENT

Consists of :

			Page
<b>BASIC ENGINE</b>			
1	212-8460	PAN GP-OIL.....	28
1	196-7979	CAMSHAFT GP.....	22
1	205-6811	CRANKSHAFT GP .....	21
1	205-6839	CYLINDER BLOCK GP .....	18
1	205-6837	CYLINDER HEAD GP.....	14
1	205-6838	VALVE MECHANISM GP .....	16
1	196-8072	COVER GP-VALVE MECHANISM .....	20
1	205-6782	FLYWHEEL GP.....	27
1	212-8459	HOUSING GP-FLYWHEEL.....	26
1	178-6519	GEAR GP-FRONT .....	24
1	205-6840	HOUSING GP-FRONT .....	25
1	212-8461	PISTON & ROD GP.....	23
1	178-6531	MOUNTING GP-ALTERNATOR.....	29
<b>LUBRICATION SYSTEM</b>			
1	217-5547	FILTER GP-ENGINE OIL.....	34
1	196-7990	LINES GP-ENGINE OIL.....	32
1	196-7978	BREATHER GP .....	33
1	196-7991	LINES GP-TURBOCHARGER OIL .....	36

H82574E 06

## 201-3871 ENGINE AR (1/2)

S/N WSA 1-00467  
Part of 217-5537-Page11

# ENGINE ARRANGEMENT

Consists of :

			Page
COOLING SYSTEM			
1	178-6633	PUMP AS-WATER.....	43
1	212-8467	LINES GP-WATER.....	44
1	51-8132	COOLER GP-ENGINE OIL.....	42
1	196-7994	FAN GP-SUCTION .....	45
AIR INLET AND EXHAUST SYSTEM			
1	212-8462	MANIFOLD GP-INLET.....	53
1	212-8464	LINES GP-AIR .....	49
1	212-8463	MANIFOLD GP-EXHAUST .....	54
1	196-7988	TURBOCHARGER GP .....	55
1	212-8632	MUFFLER GP.....	48
FUEL SYSTEM			
1	212-8471	FILTER GP-FUEL.....	60
1	212-8468	LINES GP-FUEL .....	62
1	212-8524	PUMP GP-FUEL INJECTION .....	64
4	212-8470	NOZZLE GP-UNIT INJECTOR .....	70
ELECTRICAL AND STARTING SYSTEM			
1	125-2963	MOUNTING GP-STARTING MOTOR.....	138
1	125-2988	STARTING MOTOR GP-ELECTRIC .....	140
1	212-8622	ALTERNATOR GP-CHARGING .....	142

H82575E 06

## 201-3871 ENGINE AR (2/2)

S/N WSA 1-00467  
Part of 217-5537-Page11

# ENGINE ARRANGEMENT

Consists of :

			Page
BASIC ENGINE			
1	212-8460	PAN GP-OIL.....	28
1	196-7979	CAMSHAFT GP.....	22
1	205-6811	CRANKSHAFT GP .....	21
1	205-6839	CYLINDER BLOCK GP .....	18
1	205-6837	CYLINDER HEAD GP.....	14
1	205-6838	VALVE MECHANISM GP .....	16
1	196-8072	COVER GP-VALVE MECHANISM .....	20
1	205-6782	FLYWHEEL GP.....	27
1	212-8459	HOUSING GP-FLYWHEEL.....	26
1	178-6519	GEAR GP-FRONT .....	24
1	205-6840	HOUSING GP-FRONT .....	25
1	212-8461	PISTON & ROD GP.....	23
1	178-6531	MOUNTING GP-ALTERNATOR.....	29
LUBRICATION SYSTEM			
1	217-5547	FILTER GP-ENGINE OIL.....	34
1	196-7990	LINES GP-ENGINE OIL.....	32
1	196-7978	BREATHER GP .....	33
1	196-7991	LINES GP-TURBOCHARGER OIL .....	36

H93737E 08

## 201-3871 ENGINE AR (1/2)

S/N WSA 00468-Up  
Part of 217-5537-Page11

# ENGINE ARRANGEMENT

Consists of :

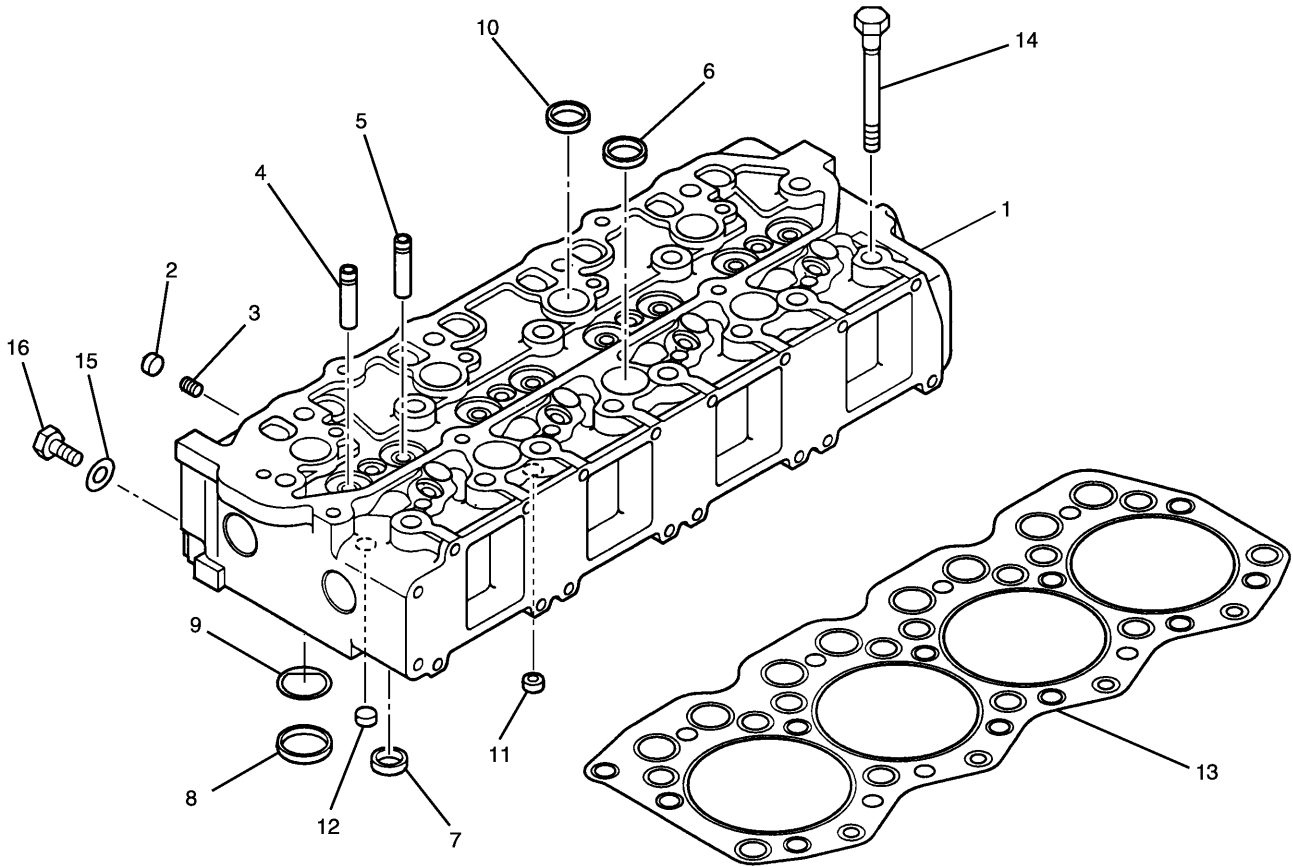
			Page
<b>COOLING SYSTEM</b>			
1	178-6633	PUMP AS-WATER.....	43
1	239-6671	LINES GP-WATER.....	44.01
1	51-8132	COOLER GP-ENGINE OIL.....	42
1	196-7994	FAN GP-SUCTION .....	45
<b>AIR INLET AND EXHAUST SYSTEM</b>			
1	212-8462	MANIFOLD GP-INLET.....	53
1	212-8464	LINES GP-AIR .....	49
1	212-8463	MANIFOLD GP-EXHAUST .....	54
1	196-7988	TURBOCHARGER GP .....	55
1	212-8632	MUFFLER GP.....	48
<b>FUEL SYSTEM</b>			
1	212-8471	FILTER GP-FUEL.....	60
1	212-8468	LINES GP-FUEL .....	62
1	212-8524	PUMP GP-FUEL INJECTION .....	64
4	212-8470	NOZZLE GP-UNIT INJECTOR .....	70
<b>ELECTRICAL AND STARTING SYSTEM</b>			
1	125-2963	MOUNTING GP-STARTING MOTOR.....	138
1	272-4774	STARTING MOTOR GP-ELECTRIC .....	141.01
1	212-8622	ALTERNATOR GP-CHARGING .....	142

H93738E 08

## 201-3871 ENGINE AR (2/2)

S/N WSA 00468-Up  
Part of 217-5537-Page11

# BASIC ENGINE



NOTE	No.	PART No.	QTY	PART NAME	NOTE	No.	PART No.	QTY	PART NAME
	1	212-8472	1	HEAD AS					
	2	099-4388	4	CAP					
	3	51-7505	4	PLUG					
	4	183-8172	4	GUIDE (INTAKE)					
	5	183-8173	4	GUIDE (EXHAUST)					
	6	51-4915	10	CAP					
	7	51-8012	4	INSERT (EXHAUST)					
	8	212-8474	4	INSERT (INTAKE)					
	9	212-8473	4	PLATE					
	10	212-8475	4	CAP					
	11	212-8476	3	CAP					
	12	51-7583	2	CAP					
	13	222-8330	1	GASKET					
	14	51-7718	17	BOLT (L=125mm)					
	15	095-2038	1	WASHER					
	16	51-5591	1	PLUG					

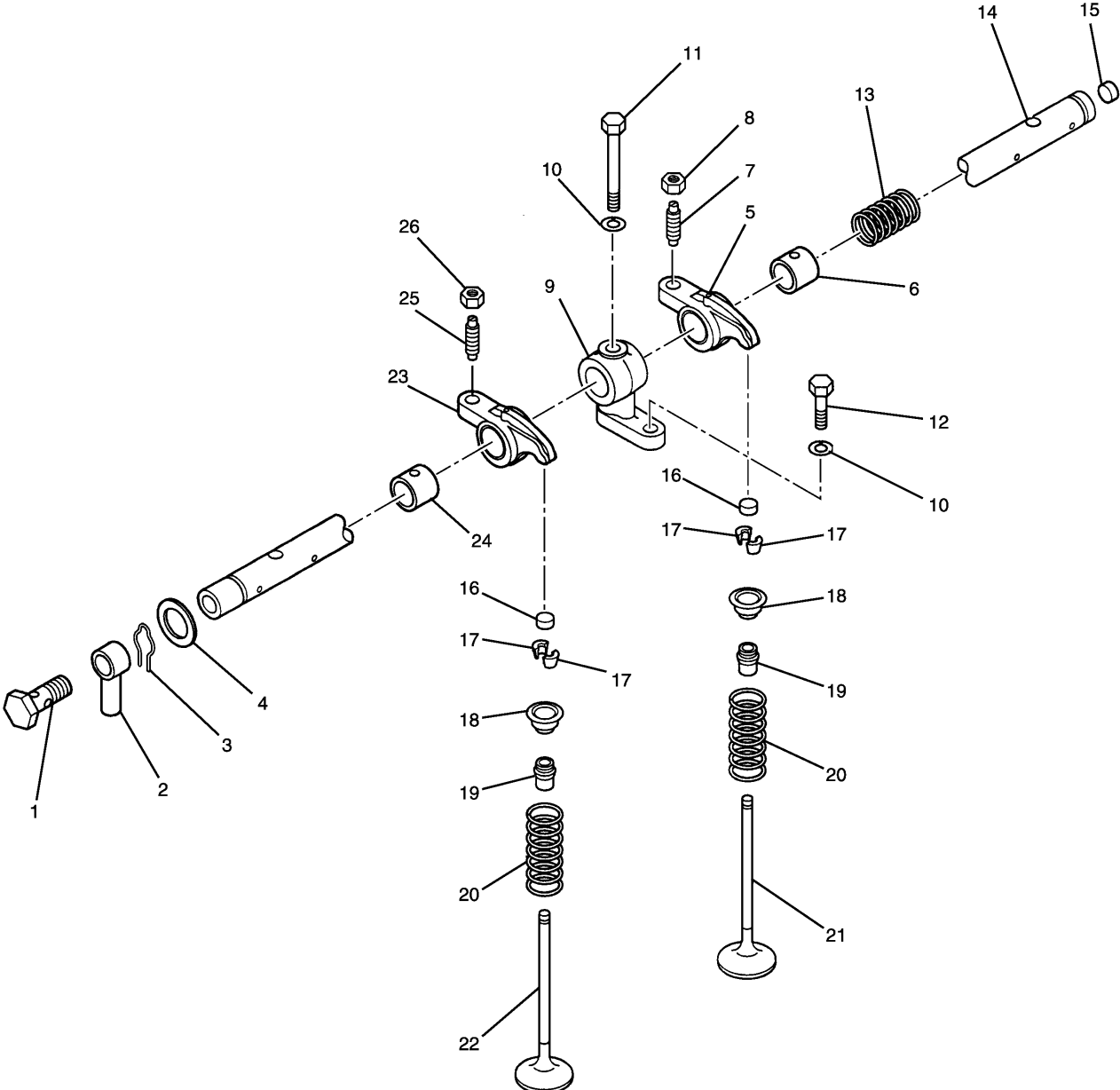
H82693E 01

**205-6837 CYLINDER HEAD GP**  
Part of 201-3871-Page12



# MEMORANDA

# BASIC ENGINE



H76921E 00

## 205-6838 VALVE MECHANISM GP

Part of 201-3871-Page12

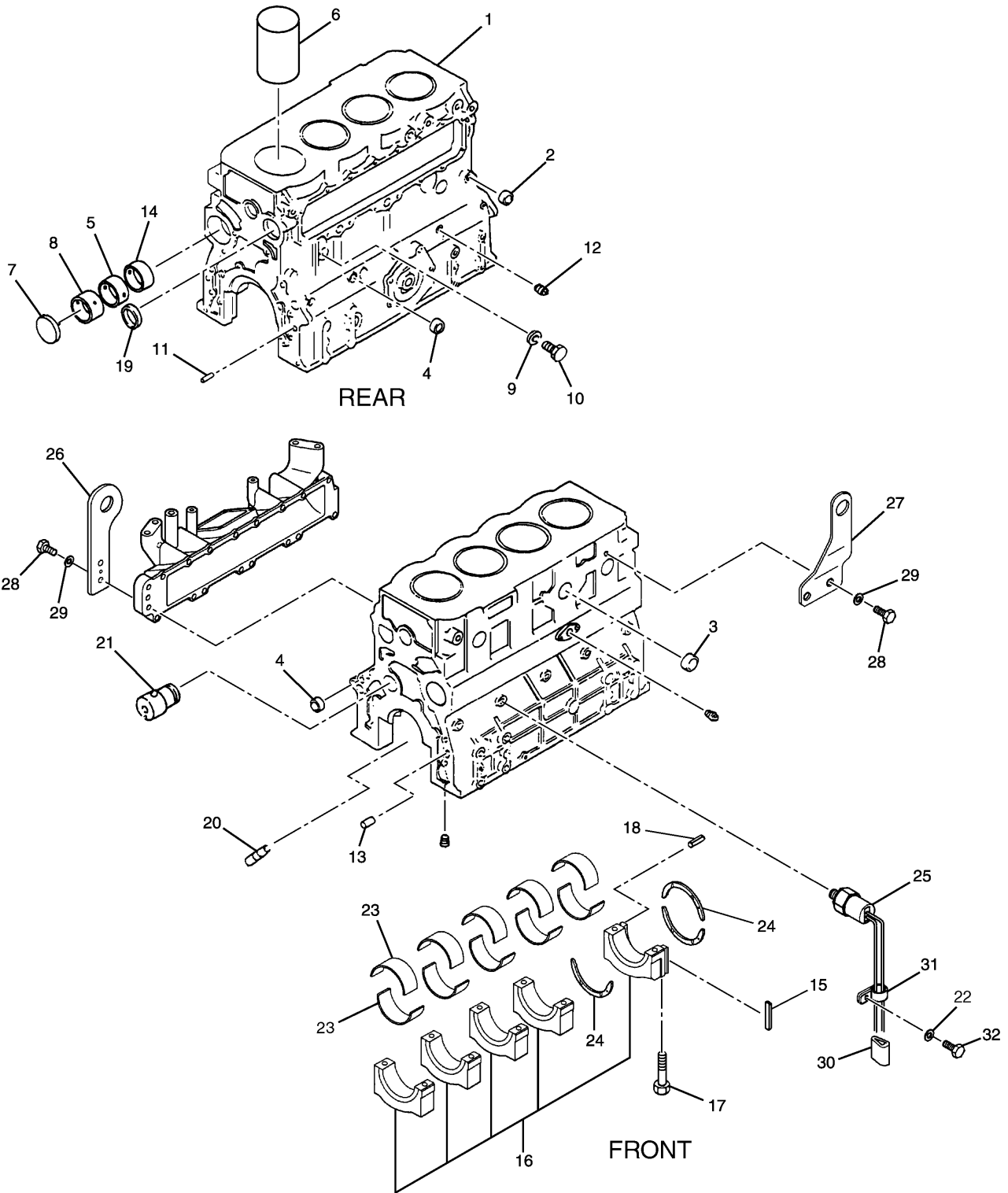
# BASIC ENGINE

NOTE	No.	PART No.	QTY	PART NAME	NOTE	No.	PART No.	QTY	PART NAME
	1	51-4921	1	BOLT (L=21mm)					
	2	51-7720	1	PIPE					
	3	51-7622	2	RING					
	4	2W-6047	2	WASHER					
	5	51-7590	4	ROCKER AS					
	6	51-7631	1	BUSHING					
	7	094-9525	1	SCREW					
	8	091-3474	1	NUT					
	9	51-7722	4	BRACKET					
	10	095-8638	8	WASHER					
	11	51-5010	4	BOLT (L=65mm)					
	12	8T-4189	4	BOLT (L=20mm)					
	13	51-7721	3	SPRING					
	14	51-7883	1	SHAFT AS					
	15	094-4696	1	PLUG					
	16	51-7630	8	CAP					
	17	51-7719	16	COTTER					
	18	51-7625	8	RETAINER					
	19	51-7624	8	SEAL					
	20	51-7740	8	SPRING					
	21	51-7739	4	VALVE (EXHAUST)					
	22	212-8477	4	VALVE (INTAKE)					
	23	178-6532	4	ROCKER AS					
	24	51-7631	1	BUSHING					
	25	094-9525	1	SCREW					
	26	091-3474	1	NUT					

H76921E 00

**205-6838 VALVE MECHANISM GP**  
Part of 201-3871-Page12

# BASIC ENGINE



H97622E 01

**205-6839 CYLINDER BLOCK GP**  
Part of 201-3871-Page12