
313C CR Track-Type Excavator

Powered by 3064 Engine

SERIAL NUMBER

HGF1 To Last Built(Vehicle)

6LK25809 To Last Installed(Engine)

HOW TO USE THE PARTS MANUAL

Caterpillar Parts Manuals include illustrations of the groups or assemblies which make up the machine. These illustrations show the standard components plus many of the attachments available for the machine.

The alphabetical index located in the front part of the book should be used to determine the page number on which specific illustrations are shown. Reference to those pages will identify each of the individual serviceable parts.

Captions

The caption under each illustration identifies the part number and name of the group or assembly shown. If more than one illustration is included for any group, the caption identifies the specific machine serial numbers to which each illustration applies. In some cases it is not possible to determine the specific machine serial numbers to which different illustrations are applicable. In those cases the caption identifies the illustration as "First Type", "Second Type", etc. Reference to the actual group or assembly is necessary in those cases to determine which illustration should be used.

Captions provide additional information such as page numbers where illustrations of sub assemblies are shown, information regarding quantities used and other information intended to assist the user in determining parts needs.

This information indicates the effective serial number or effective date on which changes became effective.

Example :

D95.05- : Applicable on and after May 1995

↑
—— D indicates the nineteen hundreds.

T00.05- : Applicable on and after May 2000

↑
—— T indicates the two thousands.

Indented Part Names

Within each illustration is a parts list identifying each serviceable part in the illustration. When a part name is indented in this list, it means that serviceable item is a part of the serviceable item under which it is indented.

Abbreviations and Symbols

R.H. Right Hand } Refers to the side of
L.H. Left Hand } the machine as viewed
} from the operator's
} compartment.

L Length
T Thickness
Z Number of Gear Teeth
O.D. Outside Diameter
I.D. Inside Diameter
O.S. Over Size
U.S. Under Size
N/S Not Serviced
AS Assembly
NOM Nominal

Abbreviations of Wire Colors

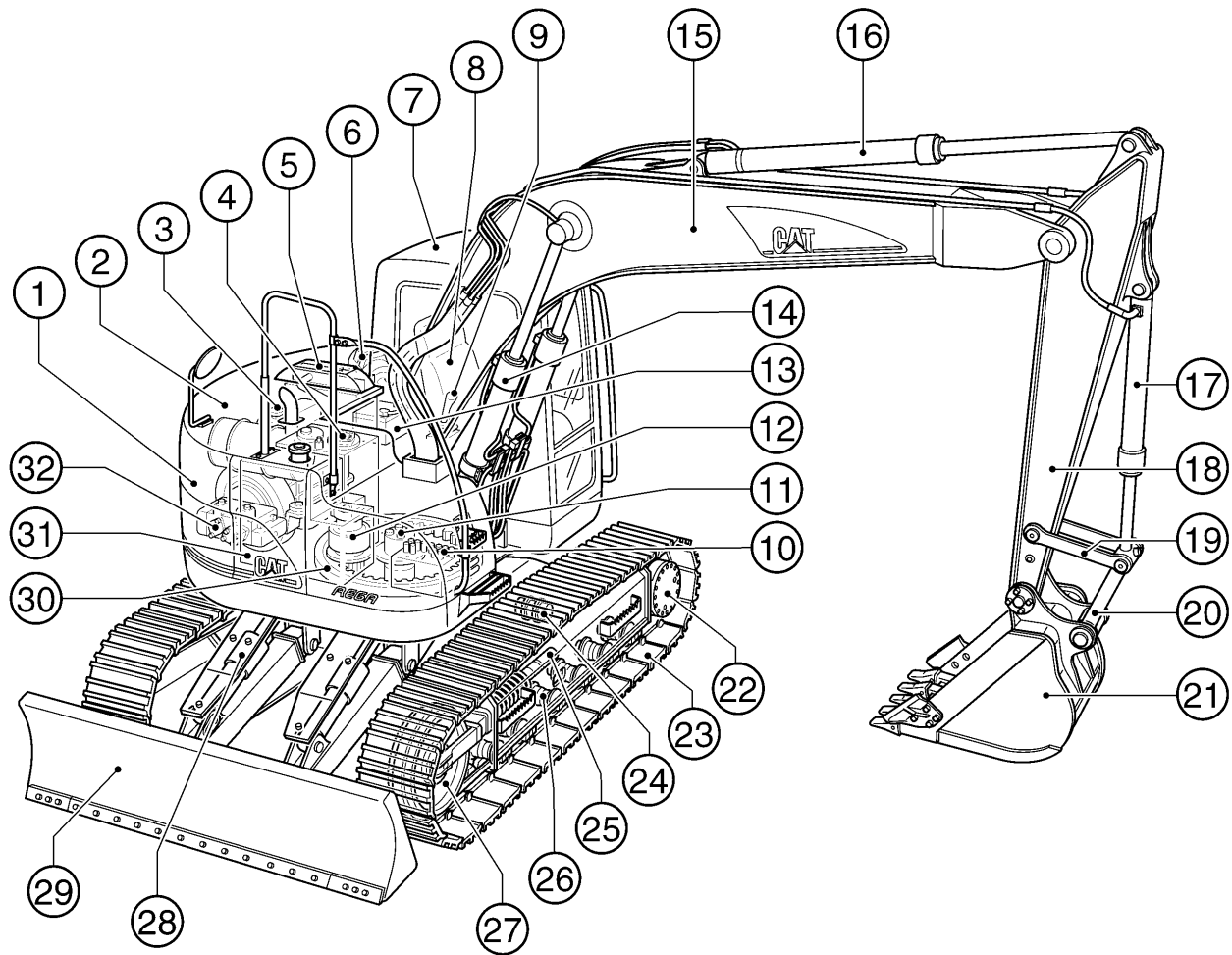
RD :Red	BR :Brown
WH :White	GN :Green
OR :Orange	BU :Blue
YL :Yellow	T :Tan
PK :Pink	DK/BU :Dark Blue
BK :Black	DK/GN :Dark Green
GY :Gray	LT/BU :Light Blue
PU :Purple	LT/GN :Light Green

Note

Continuing improvement and advancement of product design may cause changes to your machine which may not be included in this publication. Each publication is reviewed and revised, as required, to update and include these changes in later editions.

Whenever a question arises regarding your Caterpillar product, or this publication, please consult your Caterpillar dealer for the latest available information.

MODEL VIEW



	PAGE		PAGE		PAGE
① Counterweight	173	⑫ Swing Drive	290	⑳ Track	190
② Engine Cover	154	⑬ Battery	70	㉑ Carrier Roller	186
③ Engine	11	⑭ Boom Cylinder	222	㉒ Track Adjuster	185
④ Hydraulic Tank	195	⑮ Boom	414	㉓ Track Roller	186
⑤ Radiator & Oil Cooler	38	⑯ Stick Cylinder	223	㉔ Idler	181
⑥ Air Cleaner	46	⑰ Bucket Cylinder	224	㉕ Blade Cylinder	225
⑦ Cab	354	⑱ Stick	418	㉖ Blade	427
⑧ Operator Seat	385	⑲ Link	432	㉗ Swing Bearing	176
⑨ Control Lever	300	㉑ Rod	432	㉘ Fuel Tank	57
⑩ Control Valve	312	㉒ Bucket	445	㉙ Pump	199
⑪ Swivel	298	㉓ Final Drive	146		

REPLACEMENT ITEMS

The following chart provides a convenient listing of those items which require occasional replacement during normal operation or maintenance.

DESCRIPTION	PART NO.	QTY. USED	PAGE NO.
Filter			
Air Conditioner Filter	207-0105	1	401
	284-4568	1	401.02
Air Filter			
Primary Filter Assembly	131-8902	1	47
Cab Air Filter	229-9047	1	403.02
Engine Oil Filter	1R-0739	1	35
Fuel Filter	1R-0751	1	61
Hydraulic Oil Drain Filter	093-7521	1	212
Hydraulic Oil Pilot Filter	5I-8670	1	213.02
Hydraulic Tank Return Filter	126-2081	1	215
	179-9806	1	215.01
V-Belt			
Alternator & Fan V-Belt Set	217-5420	1	20.01
Refrigerant Compressor V-Belt	068-5590	1	405
	1W-5555	1	405.02

LIST OF ATTACHMENTS

The following chart provides a convenient listing of attachments with their reference page numbers as a quick reference for parts ordering.

	Consists of:	Page
193-3488	ALARM, TRAVEL	130
	BLADE	
167-9991	2500MM WIDE	427
167-9993	2700MM WIDE	428
202-1572	BLADE ARRANGEMENT	413
	BOOM	
194-8913	R-BOOM, REACH 4.65M	408
	BUCKET	
	EXCAVATION (X)	
150-2239	600MM Wide-0.32Cu.M.-Adapter Size J250 (HGF1-T04.11)	440
250-6367	564MM Wide-0.32Cu.M.-Adapter Size J250 (HGF T04.12-Up)	440.01
150-2240	700MM Wide-0.38Cu.M.-Adapter Size J250 (HGF1-T04.11)	440
250-6370	664MM Wide-0.38Cu.M.-Adapter Size J250 (HGF T04.12-Up)	440.01
150-2241	895MM Wide-0.45Cu.M.-Adapter Size J250 (HGF1-T04.11)	441
250-6373	794MM Wide-0.45Cu.M.-Adapter Size J250 (HGF T04.12-Up)	441.01
150-2242	990MM Wide-0.52Cu.M.-Adapter Size J250 (HGF1-T04.11)	441
250-6376	884MM Wide-0.52Cu.M.-Adapter Size J250 (HGF T04.12-Up)	441.01
150-2243	1000MM Wide-0.57Cu.M.-Adapter Size J250 (HGF1-T04.11)	442
250-6379	964MM Wide-0.57Cu.M.-Adapter Size J250 (HGF T04.12-Up)	442.01
	BUCKET LINKAGE	
151-1491	CASTING TYPE (HGF1-00766)	411
251-2864	CASTING TYPE (HGF00767-Up)	411.01
194-8960	FABRICATION TYPE (HGF1-00766)	411
251-2866	FABRICATION TYPE (HGF00767-Up)	411.01
211-6353	FABRICATION TYPE (Heavy Duty) (HGF1-00766)	412
	CAB	
189-3482	SKYLIGHT HATCH CAB (HGF1-00440)	355
229-9052	SKYLIGHT HATCH CAB (HGF00441-Up)	355.01
	GUARD	
214-1228	CAB FRONT (Full Net)	372.01
265-2374	BOTTOM, HEAVY DUTY	165.02
214-1229	CAB FRONT (Half Net)	372.01
190-7850	HAND CONTROL PATTERN CHANGER (4 Ways)	265
201-4509	HEATER & DEFROSTER (HGF1-00448)	395
225-5719	HEATER & DEFROSTER (HGF00449-Up)	395

LIST OF ATTACHMENTS

	Consists of:	Page
251-2922	HEAVY DUTY LINKAGE (HGF00767-Up)	410.01
	HYDRAULIC SYSTEMS, AUXILIARY	
	ADDITIONAL PERFORMANCE ARRANGEMENTS	
200-6629	2 Pump Flow	265.01
202-1554	Additional Auxiliary Stackable Valve	289
	BASIC ARRANGEMENTS	
165-0987	Combined Function/2 Pump	264
200-6626	Double Function/1 Pump	265.01
200-6624	Single Function/1 Pump	265
212-8505	BLADE PUMP	200
	BOOM LINE GROUPS	
	R-Boom (4.65M)	
210-9696	Drain Lines	256.02
193-6541	High Pressure Lines	246
210-9695	Medium Pressure Lines	253.01
210-9697	Quick Coupler Lines	408.01
210-9700	QUICK COUPLER LINES (On Upper Frame)	264
	STICK LINE GROUPS	
	R2.5 Stick	
179-5082	Drain Lines	257
179-5077	High Pressure Lines	247
179-5080	Medium Pressure Lines	254
198-0791	Quick Coupler Lines	410
	R3.0 Stick	
187-9966	High Pressure Lines	246
198-0395	Quick Coupler Lines	410
211-6200	HYDRAULIC TANK (HGF1-00766)	195.01
	LIGHT	
197-4395	R-BOOM, RIGHT SIDE	138
197-4397	WORKING, CAB MOUNTED (Time Delay)	134
178-5459	MIRROR-REAR VIEW, CAB LEFT	377
	OPTIONAL SEAT	
255-3100	HEADREST (For KAB T21 Seat) (HGF00767-Up)	386.02
283-8802	Product Link Japan	121.01

LIST OF ATTACHMENTS

	Consists of:	Page
	RADIO	
170-9451	AM	372
170-9449	AM/FM	372
4I-7343	SIDECUTTER	449
	STARTING, COLD WEATHER	
202-1552	FILM (32WR Hydraulic Oil Package)	463
198-2178	STARTING AID	77
	STICK	
	FOR THE REACH (4.65M) BOOM ONLY	
151-1489	R2.5 Stick	409
194-8988	R2.5 Stick (Heavy Duty) (HGF1-00766)	409
151-1488	R3.0 Stick	408
	TIP	
	ADAPTER SIZE J250	
8E-3755	Abrasion, Heavy Duty	452
9J-3169	Long	450
8E-3750	Long, Heavy Duty	450
100-6462	Penetration	452
100-6464	Sharp-Center	453
100-6463	Sharp-Corner	453
9J-3178	Short	451
101-2927	Wide	451
211-6274	TOOL KIT	454
	TRACK	
	RUBBER BELT	
176-4869	500MM	192
	TRIPLE GROUSER	
176-4864	600MM	190
176-4865	700MM	191
170-9453	12V-7A POWER SUPPLY SOCKET	119

INDEX

Name	Page	Name	Page
A			
ACCUMULATOR GP	218	CONSOLE GP	380
ADJUSTER GP - BUCKET	448	CONSOLE GP - OPERATOR	379
ADJUSTMENT GP - HYDRAULIC TRACK	185	CONTROL & MTG GP - ELECTRONIC	121
AIR CLEANER GP	46	CONTROL AR	121.01
AIR CONDITIONER & MOUNTING GP	390	CONTROL AR - AUXILIARY	264
AIR CONDITIONER GP	389		265
	400	CONTROL AR - QUICK COUPLER	264
ALARM AS - BACKUP	131	CONTROL GP - BLADE	308
ALARM GP - TRAVEL	130	CONTROL GP - ELECTRONIC	123
ALTERNATOR GP - CHARGING	128	CONTROL GP - GOVERNOR	68
ARM AS - WIPER	369.02	CONTROL GP - HYDRAULIC	309
		CONTROL GP - PILOT OPERATED HYD	302
			306
B			
BATTERY & WIRING AR - COLD WEATH	77	COOLER GP - ENGINE OIL	42
BATTERY & WIRING GP	70	COUNTERWEIGHT GP	173
BATTERY & WIRING GP - COLD WEATH	76	COUPLING GP - PUMP	201
BLADE & MOUNTING GP	427	COVER AS	162.01
BLADE GP	429		163.01
BLOCK GP - HYDRAULIC	216		164.02
BOOM AR	408.01	COVER GP	164
BOOM AR - 1 PIECE LONG	408		164.04
BOOM GP	414	COVER GP - HOOD	161
BOSS AS	374.01		163
BOX & MTG GP - STORAGE	167	COVER GP - STORAGE BOX	170
BOX GP	370	COVER GP - VALVE MECHANISM	20
BOX GP - STORAGE	167.02	CRANKSHAFT GP	21
BREATHER GP	33	CUSHION GP - ARM	386.01
BUCKET & ADJUSTER GP	442	CYLINDER & LINES GP - BLADE	221
BUCKET AR	440	CYLINDER & LINES GP - BOOM	219
BUCKET AS	445	CYLINDER & LINES GP - BUCKET	220
		CYLINDER & LINES GP - STICK	220
		CYLINDER & SEAL GP - BLADE	225
		CYLINDER & SEAL GP - BOOM	222
		CYLINDER & SEAL GP - BUCKET	224
		CYLINDER & SEAL GP - STICK	223
		CYLINDER BLOCK GP	18
		CYLINDER GP - BLADE	233
		CYLINDER GP - BOOM	228
		CYLINDER GP - BUCKET	232
		CYLINDER GP - STICK	230
		CYLINDER HEAD GP	14
C			
CAB GP	354		
CAB GP (BASIC)	356		
CABLE AS	82		
CAMSHAFT GP	22		
CARTRIDGE AS - TURBOCHARGER	56		
COMPRESSOR GP - REFRIGERANT	404		
CONDENSER & MTG GP - REFRIGERANT	406		
CONDENSER GP - REFRIGERANT	407		

INDEX

Name	Page	Name	Page
D		HARNES AS.....	78
DISTRIBUTOR AS.....	402		88
DOOR GP - CAB.....	364		111.05
DOOR GP - HOOD.....	159		132
DRIVE GP - SWING.....	290		141
DUCT GP - AIR.....	403		143
E		HARNES AS - CONSOLE.....	96
ELECTRONICS GP.....	122	HARNES AS - WIRING.....	106
ENGINE AR.....	11		114
F			120
FAN GP - SUCTION.....	45	HATCH GP.....	366
FASTENER GP - SWING & FINAL DR.....	152	HEAD GP - PUMP CONTROL.....	210
FENDER & COVER GP.....	168	HEADREST AS.....	386.02
FILM GP.....	462	HEATER & MTG GP - CAB.....	396
FILTER GP - ENGINE OIL.....	34	HEATER AR - CAB.....	395
FILTER GP - FUEL.....	60	HEATER GP - CAB.....	401.03
FILTER GP - HYDRAULIC.....	212	HOOD & GUARD GP.....	154
FINAL DRIVE GP.....	146	HOOD GP - ENGINE.....	158
FLYWHEEL GP.....	27	HORN GP - ELECTRIC.....	375
FRAME AS - UNDERCARRIAGE.....	179	HOUSING GP - FILTER.....	217
FRAME GP - UPPER.....	178	HOUSING GP - FLYWHEEL.....	26
G		HOUSING GP - FRONT.....	25
GEAR & BEARING GP - SWING.....	176	I	
GEAR GP - FRONT.....	24	IDLER GP - FRONT.....	181
GUARD AR - FRONT WINDOW.....	372.01	INSTALLATION AR.....	413
GUARD GP - BLADE CYLINDER.....	241	INSTALLATION AR - AUXILIARY.....	265.01
GUARD GP - BOTTOM.....	165	K	
GUARD GP - FAN.....	41.01	KNOB AS.....	304
GUARD GP - FENDER.....	172	L	
GUARD GP - FRONT WINDOW.....	373	LAMP GP - FLOOD.....	140
GUARD GP - SNOW.....	165.03	LEVER AS.....	382
GUARD GP - TRAVEL MOTOR.....	189	LIGHTING GP - BOOM.....	136
H		LIGHTING GP - CAB.....	134
HANDHOLD GP.....	166	LIGHTING GP - CHASSIS.....	133
		LINES AR - AUXILIARY HYDRAULIC.....	246
		LINES GP - AIR.....	49

INDEX

Name	Page	Name	Page
LINES GP - AIR CONDITIONER	392	MOUNTING GP - ALTERNATOR.....	29
LINES GP - AUXILIARY HYDRAULIC.....	248	MOUNTING GP - ENGINE	30
LINES GP - BLADE CYL & VALVE	284	MOUNTING GP - GREASE GUN	165.04
LINES GP - BLADE CYLINDER.....	239	MOUNTING GP - STARTING MOTOR	124
LINES GP - BOOM.....	242	MOUNTING GP - VALVE	310
LINES GP - BOOM CYLINDER	235	MUFFLER GP	48
LINES GP - BUCKET CYLINDER.....	238		
LINES GP - DRAIN.....	52		
	256.02		
LINES GP - ENGINE OIL	32		
LINES GP - FRONT.....	280		
LINES GP - FUEL.....	59		
	62		
LINES GP - GREASE	425		
LINES GP - HEATER.....	398		
LINES GP - HYDRAULIC.....	289		
LINES GP - OIL DRAIN	37		
LINES GP - PILOT.....	266		
LINES GP - PUMP.....	262		
LINES GP - QUICK COUPLER	257.01		
LINES GP - RETURN & FILTER	286		
LINES GP - STICK	244		
LINES GP - STICK CYLINDER.....	237		
LINES GP - SWING MOTOR.....	288		
LINES GP - TRAVEL MOTOR	260		
LINES GP - TURBOCHARGER OIL	36		
LINES GP - WATER.....	44		
LINK AS - TRACK.....	193		
LINKAGE AR - BUCKET.....	411		
LINKAGE AR - FRONT	410.01		
LINKAGE GP - BUCKET	431		
LITERATURE GP	388		

M

MANIFOLD GP - EXHAUST	54
MANIFOLD GP - INLET.....	53
MIRROR GP - REAR VIEW.....	376
MONITOR GP - OPERATOR.....	95.03
MOTOR GP - TRAVEL.....	297.01
MOTOR AS - WINDOW WIPER	369.01
MOTOR GP - SWING.....	296
MOUNTING GP.....	123.01

N

NOZZLE GP - UNIT INJECTOR	66
---------------------------------	----

P

PAN GP - OIL.....	28
PANEL GP - CIRCUIT BREAKER	87.01
PISTON & ROD GP	23
PLATE & FILM GP	456
PLATFORM GP - OPERATOR.....	378
PULLEY GP	20.01
PUMP & MOUNTING GP	199
PUMP AS - WATER	43
PUMP GP - FUEL INJECTION	64
PUMP GP - MAIN HYDRAULIC	202

R

RADIATOR & HYD OIL COOLER GP	38
RADIO GP - AM.....	372
RADIO GP - AM/FM.....	372
ROLLER AR - TRACK & CARRIER	186
ROLLER GP - TRACK CARRIER	188
ROLLER GP - TRACK - SINGLE FLANGE	187

S

SCREEN GP.....	198
SEAT BELT GP	387
SEAT GP.....	385
SEPARATOR - WATER	59.02
SIDECUTTER GP	449
SPRING GP - RECOIL.....	184
SPROCKET GP - NONSEGMENTED.....	145
STARTING MOTOR GP - ELECTRIC	126
STICK AR - COUPLER	410

INDEX

Name	Page	Name	Page
STICK AR - HOE	408	VALVE GP - CHECK	342
STICK GP	419	VALVE GP - CONTROL	322
	423		340
STICK GP - COUPLER.....	420	VALVE GP - MAIN CONTROL	312
	424	VALVE GP - MANIFOLD & REDUCING.....	336
STICK GP - HOE.....	418	VALVE GP - PILOT.....	300
	421		346
SUPPORT AS.....	384	VALVE GP - PILOT RELIEF.....	339
SUPPORT GP - FENDER.....	175	VALVE GP - PRESS REDUCING SOL.....	343
SUPPORT GP - SEAT	383	VALVE GP - PRESSURE REDUCING.....	338
SWITCH AS.....	87	VALVE GP - REDUCING.....	335
	102	VALVE GP - RELIEF.....	297.05
			332
SWITCH AS - DISCONNECT.....	81	VALVE GP - SHUTTLE.....	344
SWITCH AS - MAGNETIC.....	84		353
SWITCH AS - ROTARY	104	VALVE GP - SOLENOID	353.01
SWITCH GP - HEAT START.....	103	VALVE GP - TRACTION CONTROL	297.03
SWIVEL GP	298	VALVE MECHANISM GP.....	16

T

TANK & FILTER GP - HYDRAULIC.....	196
TANK & MTG GP - FUEL	57
TANK & MTG GP - HYDRAULIC	195
TANK GP - FUEL.....	58
TIMER AS.....	92
	142
TIP GP	453
TIP GP - ABRASION	452
TIP GP - LONG.....	450
TIP GP - PENETRATION.....	452
TIP GP - SHORT	451
TIP GP - WIDE.....	451
TOOL AR.....	454
TOOL GP	455
TRACK GP	190
TURBOCHARGER GP	55

V

VALVE & MOUNTING GP	311
VALVE AR.....	265
VALVE AS - BALL.....	353.04

W

WASHER GP - WINDOW.....	371
WINDOW AS	368.01
WINDOW GP	368
WINDOW GP - DOOR	365.03
WIPER GP - WINDOW.....	369
WIRING GP.....	105
	111.01
	119
WIRING GP - CAB.....	112
WIRING GP - CONSOLE.....	93
	109
WIRING GP - QUICK COUPLER.....	77.01
WIRING GP - RADIO	117

ENGINE ARRANGEMENT

Consists of :

		Page
1	201-3871 ENGINE AR.....	12
1	205-6810 PULLEY GP.....	20.01

H82573E 01

217-5537 ENGINE AR

ENGINE ARRANGEMENT

Consists of :

			Page
BASIC ENGINE			
1	212-8460	PAN GP-OIL.....	28
1	196-7979	CAMSHAFT GP.....	22
1	205-6811	CRANKSHAFT GP	21
1	205-6839	CYLINDER BLOCK GP	18
1	205-6837	CYLINDER HEAD GP.....	14
1	205-6838	VALVE MECHANISM GP	16
1	196-8072	COVER GP-VALVE MECHANISM	20
1	205-6782	FLYWHEEL GP.....	27
1	212-8459	HOUSING GP-FLYWHEEL.....	26
1	178-6519	GEAR GP-FRONT	24
1	205-6840	HOUSING GP-FRONT	25
1	212-8461	PISTON & ROD GP.....	23
1	178-6531	MOUNTING GP-ALTERNATOR.....	29
LUBRICATION SYSTEM			
1	217-5547	FILTER GP-ENGINE OIL	34
1	196-7990	LINES GP-ENGINE OIL.....	32
1	196-7978	BREATHER GP	33
1	196-7991	LINES GP-TURBOCHARGER OIL	36

H82574E 06

ENGINE ARRANGEMENT

Consists of :

			Page
COOLING SYSTEM			
1	178-6633	PUMP AS-WATER	43
1	212-8467	LINES GP-WATER.....	44
1	51-8132	COOLER GP-ENGINE OIL.....	42
1	196-7994	FAN GP-SUCTION	45
AIR INLET AND EXHAUST SYSTEM			
1	212-8462	MANIFOLD GP-INLET.....	53
1	212-8464	LINES GP-AIR	49
1	212-8463	MANIFOLD GP-EXHAUST	54
1	196-7988	TURBOCHARGER GP	55
1	212-8632	MUFFLER GP.....	48
FUEL SYSTEM			
1	212-8471	FILTER GP-FUEL.....	60
1	212-8468	LINES GP-FUEL	62
1	212-8524	PUMP GP-FUEL INJECTION	64
4	212-8470	NOZZLE GP-UNIT INJECTOR	66
ELECTRICAL AND STARTING SYSTEM			
1	125-2963	MOUNTING GP-STARTING MOTOR.....	124
1	125-2988	STARTING MOTOR GP-ELECTRIC	126
1	212-8622	ALTERNATOR GP-CHARGING	128

H82575E 06

ENGINE ARRANGEMENT

Consists of :

			Page
BASIC ENGINE			
1	212-8460	PAN GP-OIL.....	28
1	196-7979	CAMSHAFT GP.....	22
1	205-6811	CRANKSHAFT GP	21
1	205-6839	CYLINDER BLOCK GP	18
1	205-6837	CYLINDER HEAD GP.....	14
1	205-6838	VALVE MECHANISM GP	16
1	196-8072	COVER GP-VALVE MECHANISM	20
1	205-6782	FLYWHEEL GP.....	27
1	212-8459	HOUSING GP-FLYWHEEL.....	26
1	178-6519	GEAR GP-FRONT	24
1	205-6840	HOUSING GP-FRONT	25
1	212-8461	PISTON & ROD GP.....	23
1	178-6531	MOUNTING GP-ALTERNATOR.....	29
LUBRICATION SYSTEM			
1	217-5547	FILTER GP-ENGINE OIL	34
1	196-7990	LINES GP-ENGINE OIL.....	32
1	196-7978	BREATHER GP	33
1	196-7991	LINES GP-TURBOCHARGER OIL	36

H93737E 08

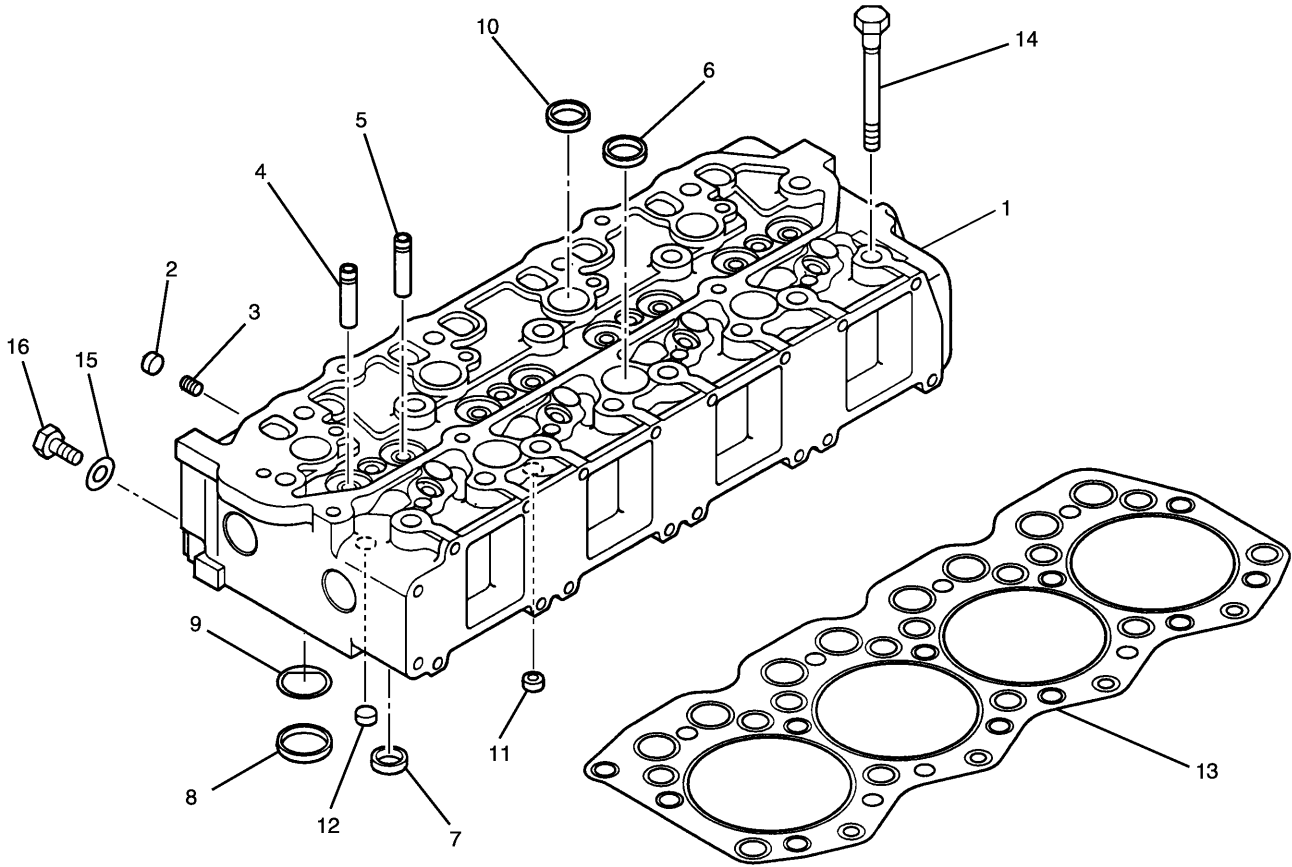
ENGINE ARRANGEMENT

Consists of :

			Page
COOLING SYSTEM			
1	178-6633	PUMP AS-WATER	43
1	239-6671	LINES GP-WATER.....	44.01
1	51-8132	COOLER GP-ENGINE OIL.....	42
1	196-7994	FAN GP-SUCTION	45
AIR INLET AND EXHAUST SYSTEM			
1	212-8462	MANIFOLD GP-INLET.....	53
1	212-8464	LINES GP-AIR	49
1	212-8463	MANIFOLD GP-EXHAUST	54
1	196-7988	TURBOCHARGER GP	55
1	212-8632	MUFFLER GP.....	48
FUEL SYSTEM			
1	212-8471	FILTER GP-FUEL.....	60
1	212-8468	LINES GP-FUEL	62
1	212-8524	PUMP GP-FUEL INJECTION	64
4	212-8470	NOZZLE GP-UNIT INJECTOR	66
ELECTRICAL AND STARTING SYSTEM			
1	125-2963	MOUNTING GP-STARTING MOTOR.....	124
1	272-4774	STARTING MOTOR GP-ELECTRIC	127.01
1	212-8622	ALTERNATOR GP-CHARGING	128

H93738E 08

BASIC ENGINE



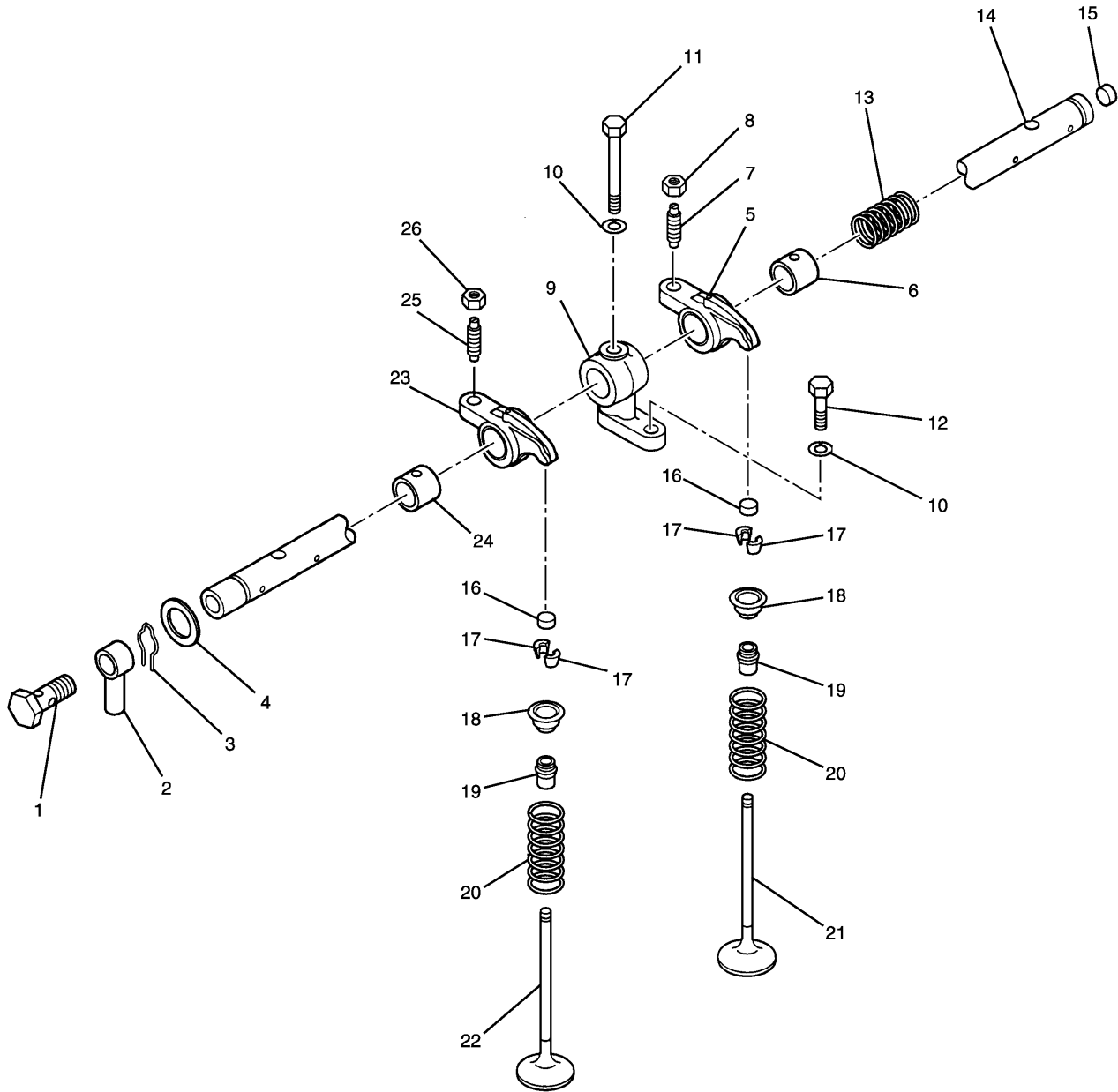
NOTE	No.	PART No.	QTY	PART NAME	NOTE	No.	PART No.	QTY	PART NAME
	1	212-8472	1	HEAD AS					
	2	099-4388	4	CAP					
	3	51-7505	4	PLUG					
	4	183-8172	4	GUIDE (INTAKE)					
	5	183-8173	4	GUIDE (EXHAUST)					
	6	51-4915	10	CAP					
	7	51-8012	4	INSERT (EXHAUST)					
	8	212-8474	4	INSERT (INTAKE)					
	9	212-8473	4	PLATE					
	10	212-8475	4	CAP					
	11	212-8476	3	CAP					
	12	51-7583	2	CAP					
	13	222-8330	1	GASKET					
	14	51-7718	17	BOLT (L=125mm)					
	15	095-2038	1	WASHER					
	16	51-5591	1	PLUG					

H82693E 01

205-6837 CYLINDER HEAD GP
Part of 201-3871-Page12

MEMORANDA

BASIC ENGINE



H76921E 00

205-6838 VALVE MECHANISM GP
Part of 201-3871-Page12

BASIC ENGINE

NOTE	No.	PART No.	QTY	PART NAME	NOTE	No.	PART No.	QTY	PART NAME
	1	51-4921	1	BOLT (L=21mm)					
	2	51-7720	1	PIPE					
	3	51-7622	2	RING					
	4	2W-6047	2	WASHER					
	5	51-7590	4	ROCKER AS					
	6	51-7631	1	BUSHING					
	7	094-9525	1	SCREW					
	8	091-3474	1	NUT					
	9	51-7722	4	BRACKET					
	10	095-8638	8	WASHER					
	11	51-5010	4	BOLT (L=65mm)					
	12	8T-4189	4	BOLT (L=20mm)					
	13	51-7721	3	SPRING					
	14	51-7883	1	SHAFT AS					
	15	094-4696	1	PLUG					
	16	51-7630	8	CAP					
	17	51-7719	16	COTTER					
	18	51-7625	8	RETAINER					
	19	51-7624	8	SEAL					
	20	51-7740	8	SPRING					
	21	51-7739	4	VALVE (EXHAUST)					
	22	212-8477	4	VALVE (INTAKE)					
	23	178-6532	4	ROCKER AS					
	24	51-7631	1	BUSHING					
	25	094-9525	1	SCREW					
	26	091-3474	1	NUT					

H76921E 00

205-6838 VALVE MECHANISM GP
Part of 201-3871-Page12