



311C u

Track-Type Excavator

Powered by 3064 Engine

SERIAL NUMBER

CLK01001 To Last Built(Vehicle)

6LK27420 To Last Installed(Engine)

HOW TO USE THE PARTS MANUAL

Caterpillar Parts Manuals include illustrations of the groups or assemblies which make up the machine. These illustrations show the standard components plus many of the attachments available for the machine.

The alphabetical index located in the front part of the book should be used to determine the page number on which specific illustrations are shown. Reference to those pages will identify each of the individual serviceable parts.

Captions

The caption under each illustration identifies the part number and name of the group or assembly shown. If more than one illustration is included for any group, the caption identifies the specific machine serial numbers to which each illustration applies. In some cases it is not possible to determine the specific machine serial numbers to which different illustrations are applicable. In those cases the caption identifies the illustration as "First Type", "Second Type", etc. Reference to the actual group or assembly is necessary in those cases to determine which illustration should be used.

Captions provide additional information such as page numbers where illustrations of sub assemblies are shown, information regarding quantities used and other information intended to assist the user in determining parts needs.

This information indicates the effective serial number or effective date on which changes became effective.

Example :

D95.05- : Applicable on and after May 1995

↑
—— D indicates the nineteen hundreds.

T00.05- : Applicable on and after May 2000

↑
—— T indicates the two thousands.

Indented Part Names

Within each illustration is a parts list identifying each serviceable part in the illustration. When a part name is indented in this list, it means that serviceable item is a part of the serviceable item under which it is indented.

Abbreviations and Symbols

R.H. Right Hand
L.H. Left Hand

} Refers to the side of the machine as viewed from the operator's compartment.

L Length
T Thickness
Z Number of Gear Teeth
O.D. Outside Diameter
I.D. Inside Diameter
O.S. Over Size
U.S. Under Size
N/S Not Serviced
AS Assembly
NOM Nominal

Abbreviations of Wire Colors

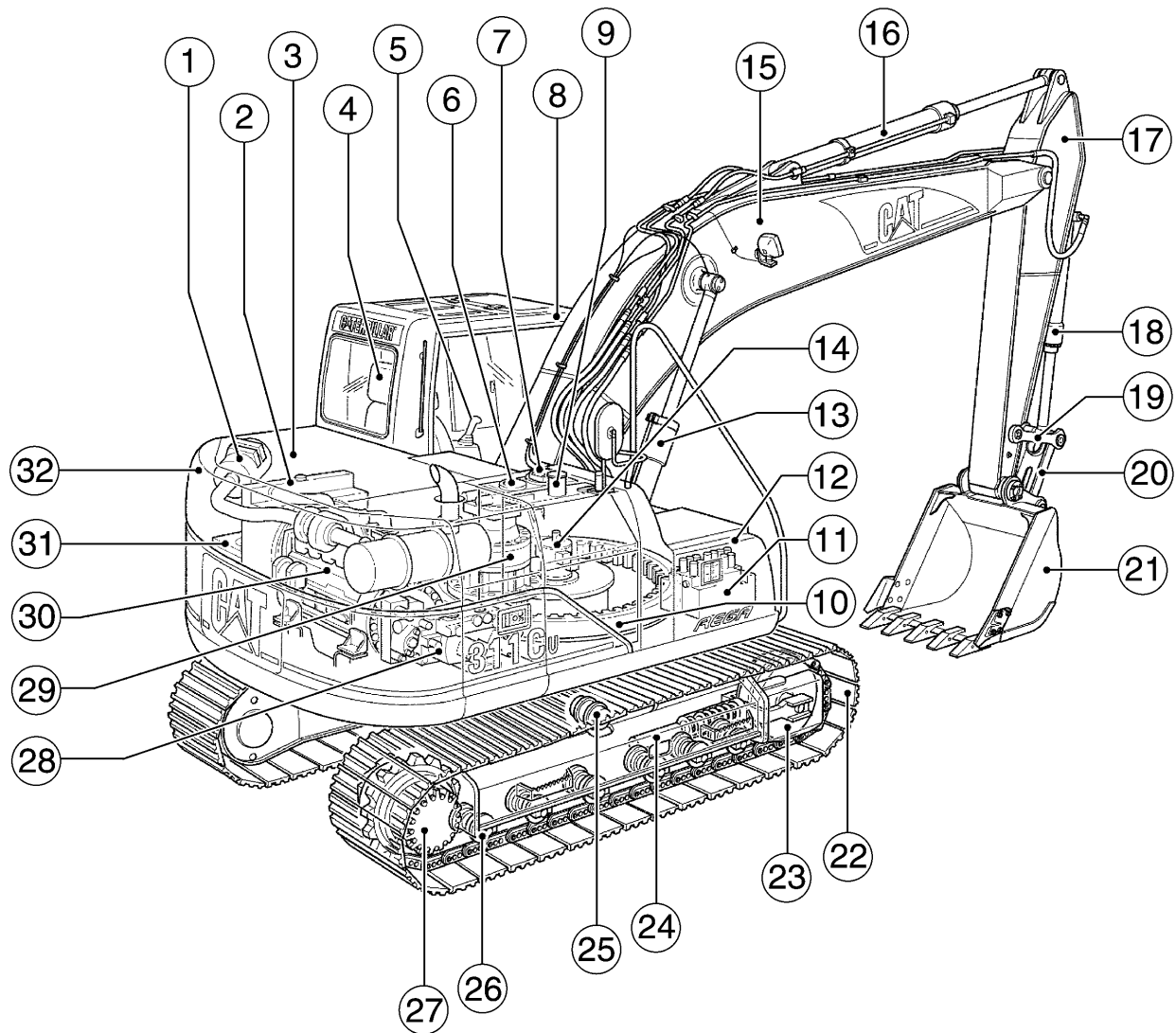
RD :Red	BR :Brown
WH :White	GN :Green
OR :Orange	BU :Blue
YL :Yellow	T :Tan
PK :Pink	DK/BU :Dark Blue
BK :Black	DK/GN :Dark Green
GY :Gray	LT/BU :Light Blue
PU :Purple	LT/GN :Light Green

Note

Continuing improvement and advancement of product design may cause changes to your machine which may not be included in this publication. Each publication is reviewed and revised, as required, to update and include these changes in later editions.

Whenever a question arises regarding your Caterpillar product, or this publication, please consult your Caterpillar dealer for the latest available information.

MODEL VIEW



	PAGE		PAGE		PAGE
① Air Cleaner	54	⑫ Control Valve Cover	193	⑳ Idler	216
② Radiator & Oil Cooler	40	⑬ Boom Cylinder	260	㉑ Track Adjuster	218
③ Engine Hood	186	⑭ Swivel	371	㉒ Carrier Roller	219
④ Operator Seat	531	⑮ Boom	570	㉓ Track Roller	219
⑤ Control Lever	372	⑯ Stick Cylinder	261	㉔ Final Drive	176
⑥ Hydraulic Tank	231	⑰ Stick	574	㉕ Pump	235
⑦ Return Filter	249	⑱ Bucket Cylinder	262	㉖ Swing Drive	362
⑧ Cab	450	⑲ Link	586	㉗ Engine	14
⑨ Fuel Tank	67	㉘ Rod	586	㉙ Battery	88
⑩ Swing Bearing	208	㉚ Bucket	600	㉛ Counterweight	204
⑪ Control Valve	388	㉜ Track	226		

REPLACEMENT ITEMS

The following chart provides a convenient listing of those items which require occasional replacement during normal operation or maintenance.

DESCRIPTION	PART NO.	QTY. USED	PAGE NO.
Filter			
Air Conditioner Filter	305-0367	1	545
Air Filter			
Primary Filter Assembly	131-8902	1	53
Cab Air Filter	293-1184	1	547
Engine Oil Filter	1R-0739	1	37
Fuel Filter	1R-0751	1	73
Hydraulic Oil Drain Filter	093-7521	1	249
		1	249.01
Hydraulic Oil Pilot Filter	126-1813	1	250.01
	5I-8670	1	250.02
Hydraulic Tank Return Filter	126-2081	1	252
	179-9806	1	252.01
V-Belt			
Alternator & Fan V-Belt Set	217-5420	1	33
Refrigerant Compressor V-Belt	255-3014	1	559

LIST OF ATTACHMENTS

The following chart provides a convenient listing of attachments with their reference page numbers as a quick reference for parts ordering.

Consists of:	Page
200-6706 ADDITIONAL PERFORMANCE ARRANGEMENT (2 PUMPS FLOW)	312
 AIR CLEANER	
162-6324 WITH DOUBLE ELEMENT	54
199-9363 WITH PREFILTER	56
 170-6804 ALARM, TRAVEL	 160
 BLADE	
151-1453 2500MM WIDE	567
199-9299 2700MM WIDE	566
 BOOM	
151-1443 R-BOOM, REACH 4.3M	561
 BUCKET	
EXCAVATION (X)	
150-2239 600MM Wide-0.32Cu.M.-Adapter Size J250 (CLK01001-T04.11)	594
250-6367 564MM Wide-0.32Cu.M.-Adapter Size J250 (CLK T04.12-Up)	594.01
150-2240 700MM Wide-0.38Cu.M.-Adapter Size J250 (CLK01001-T04.11)	594
250-6370 664MM Wide-0.38Cu.M.-Adapter Size J250 (CLK T04.12-Up)	594.01
150-2241 895MM Wide-0.45Cu.M.-Adapter Size J250 (CLK01001-T04.11)	595
250-6373 794MM Wide-0.45Cu.M.-Adapter Size J250 (CLK T04.12-Up)	595.01
150-2242 990MM Wide-0.52Cu.M.-Adapter Size J250 (CLK01001-T04.11)	595
250-6376 884MM Wide-0.52Cu.M.-Adapter Size J250 (CLK T04.12-Up)	595.01
150-2243 1000MM Wide-0.57Cu.M.-Adapter Size J250 (CLK01001-T04.11)	596
250-6379 964MM Wide-0.57Cu.M.-Adapter Size J250 (CLK T04.12-Up)	596.01
150-2244 1090MM Wide-0.63Cu.M.-Adapter Size J250 (CLK01001-T04.11)	596
250-6382 1054MM Wide-0.63Cu.M.-Adapter Size J250 (CLK T04.12-Up)	596.01
 BUCKET LINKAGE	
151-1491 CASTING TYPE (CLK01001-02507)	564
251-2864 CASTING TYPE (CLK02508-Up)	564.01
194-8960 FABRICATION TYPE (CLK01001-02507)	564
251-2866 FABRICATION TYPE (CLK02508-Up)	564.01
211-6353 FABRICATION TYPE (Heavy Duty)(CLK01001-02800)	565
258-5920 FABRICATION TYPE (Heavy Duty)(CLK02801-Up)	564.02
 168-0007 BUMPER, SIDE	 211
 CAB	
248-7884 METAL ROOF HATCH CAB	451
244-5268 SKYLIGHT HATCH CAB	450
 170-2593 COUNTERWEIGHT (WITH LIFTING EYE)	 206

LIST OF ATTACHMENTS

	Consists of:	Page
202-1489	DEMOLITION	11
	GUARD	
199-0015	BOTTOM, HEAVY DUTY	197
229-1067	BUCKET CYLINDER (For Demolition)	282
	FOGS	
171-7485	Cab Front	510
178-5460	Cab Top	509
137-2813	SWIVEL	200
120-7199	TRACK GUIDE	222
164-0534	WINDSHIELD, FRONT (Full Net)	512
164-0535	WINDSHIELD, FRONT (Half Net)	514
171-0009	HAND CONTROL PATTERN CHANGER (4 WAYS)	312
170-9706	HEATER & DEFROSTER	550
	HYDRAULIC SYSTEMS, AUXILIARY	
	ADDITIONAL AUXILIARY STACKABLE VALVES	
202-3591	1 Additional	361
202-3592	2 Additional	360
	BASIC ARRANGEMENT	
153-8804	Combined Function	311
165-1107	Double Function	310
165-1103	Single Function	310
	BOOM LINE GROUPS	
153-8808	R-Boom, Reach 4.3M	288
	QUICK COUPLER LINES	
200-7298	For R-Boom	561
200-7297	Quick Coupler Circuit	311
	STICK LINE GROUPS	
153-8814	R2.25 Stick	289
153-8815	R2.25 Stick (Heavy Duty)	296
197-2254	R2.8 Stick	289
	LIGHT	
193-3498	R-BOOM, RIGHT SIDE	166
170-6948	WORKING, CAB MOUNT	162
178-5459	MIRROR-REAR VIEW, CAB LEFT	519

LIST OF ATTACHMENTS

	Consists of:	Page
	OPTIONAL SEAT	
164-0477	HEADREST (For KAB 528P/C, KAB T8P/C Seat)	539
161-3781	KAB 527P/C SEAT	534.01
171-7352	KAB T1P SEAT(Vinyl)	534
178-5624	KAB T8P/C SEAT	533
283-8800	Product Link Japan	152.01
	RADIO	
163-6634	AM	505
163-6633	AM/FM	506
163-6636	AM/FM (With Cassette)	507
161-3750	RAIN PROTECTOR, CAB FRONT	515
4I-7343	SIDE CUTTER	604
	STARTING, COLD WEATHER	
199-9409	FILM (32WR Hydraulic Oil Package)	630
199-9408	STARTING AID	94
	STICK-FOR THE REACH (4.3M) BOOM ONLY	
151-1445	R2.25 STICK	562
202-1493	R2.25 STICK (Heavy Duty)(CLK01001-02800)	563
194-8843	R2.8 STICK	562
161-3751	SUN VISOR	516
	TIP	
	ADAPTER SIZE J250	
8E-3755	Abrasion, Heavy Duty	607
9J-3169	Long	605
8E-3750	Long, Heavy Duty	606
100-6462	Penetration	607
100-6464	Sharp-Center	608
100-6463	Sharp-Corner	608
9J-3178	Short	606
101-2927	Wide	605
194-9132	TOOL KIT	609
	TRACK	
	RUBBER BELT	
194-1145	500MM	228
	TRIPLE GROUSER	
194-1142	600MM	226
194-1143	700MM	227
194-1144	770MM	227

LIST OF ATTACHMENTS

Consists of:	Page
167-3547 12V-5A POWER SUPPLY SOCKET	147

INDEX

Name	Page	Name	Page
A			
ADJUSTER GP - BUCKET	603	CONDENSER & MTG GP - REFRIGERANT	560
ADJUSTMENT GP - HYDRAULIC TRACK	218	CONSOLE GP	526
AIR CLEANER AR	56	CONSOLE GP - OPERATOR	525
AIR CLEANER GP	52	CONTROL & MTG GP - ELECTRONIC	152
	57	CONTROL AR	152.01
AIR CONDITIONER & MOUNTING GP	542	CONTROL AR - AUXILIARY	310
AIR CONDITIONER GP	541		311.01
	544	CONTROL GP - BLADE	382
ALARM GP - TRAVEL	160	CONTROL GP - ELECTRONIC	154
ALTERNATOR GP - CHARGING	158	CONTROL GP - GOVERNOR	84
ARM AS - WIPER	501	CONTROL GP - HYDRAULIC	383
B			
BATTERY & WIRING AR - COLD WEATH	94	CONTROL GP - PILOT OPERATED HYD	376
BATTERY & WIRING GP	88		380
BATTERY & WIRING GP - COLD WEATH	95	COOLER GP - ENGINE OIL	48
BLADE & MOUNTING GP	579	COUNTERWEIGHT GP	204
BLADE AR	566	COUPLING GP - PUMP	237
BLADE GP	581	COVER GP	193
BLOCK GP - HYDRAULIC	253	COVER GP - VALVE MECHANISM	22
BOOM AR	561	CRANKSHAFT GP	23
BOOM AR - 1 PIECE LONG	561	CYLINDER & LINES GP - BLADE	259
BOOM GP	568	CYLINDER & LINES GP - BOOM	256
BOX & MOUNTING GP	203	CYLINDER & LINES GP - BUCKET	258
BREATHER GP	35	CYLINDER & LINES GP - STICK	257
BUCKET & ADJUSTER GP	597	CYLINDER & SEAL GP - BLADE	264
BUCKET AR	594	CYLINDER & SEAL GP - BOOM	260
BUCKET AS	600	CYLINDER & SEAL GP - BUCKET	262
BUMPER SET	211	CYLINDER & SEAL GP - STICK	261
C			
CAB GP	450	CYLINDER BLOCK GP	20
CAB GP (BASIC)	453	CYLINDER GP - BLADE	272
CAB GP - EXTERIOR	480	CYLINDER GP - BOOM	266
CAB GP - INTERIOR	460	CYLINDER GP - BUCKET	270
CABLE AS	102	CYLINDER GP - STICK	268
CAMSHAFT GP	24	CYLINDER HEAD GP	16
CARTRIDGE AS - TURBOCHARGER	66	D	
COMPRESSOR GP - REFRIGERANT	558	DOOR GP - CAB	482
		DOOR GP - HOOD	190
		DRIVE GP - SWING	362
		DUCT GP - AIR	546

INDEX

Name	Page	Name	Page
E			
ELECTRONICS GP	153	HARNES AS - CONSOLE	121
ENGINE AR	12	HARNES AS - WIRING	134
F			
FAN GP - SUCTION	51	HATCH AS	489
FASTENER GP - SWING & FINAL DR	178	HATCH GP	488
FENDER & MOUNTING GP	230		490
FILM GP	624	HEAD GP - PUMP CONTROL	246
FILTER GP - ENGINE OIL	36	HEADREST AS	539
FILTER GP - FUEL	72	HEATER & MOUNTING GP	552
FILTER GP - HYDRAULIC	249	HEATER AR	550
FINAL DRIVE GP	175	HEATER GP	554
FLYWHEEL GP	29	HOOD & GUARD GP	180
FRAME AS - UNDERCARRIAGE	212	HOOD GP	189
FRAME GP - UPPER	210	HOOD GP - ENGINE	188
G			
GAUGE AS	86	HORN GP - ELECTRIC	517
	248	HOUSING GP - FILTER	254
GEAR & BEARING GP - SWING	208	HOUSING GP - FLYWHEEL	28
GEAR GP - FRONT	26	HOUSING GP - FRONT	27
GUARD GP - BLADE CYLINDER	283	I	
GUARD GP - BOTTOM	195	IDLER GP - FRONT	214
GUARD GP - BUCKET CYLINDER	282	INSTALLATION AR	312
GUARD GP - FRONT WINDOW	510	K	
GUARD GP - OVERHEAD	509	KNOB AS	378
GUARD GP - SNOW	202	L	
GUARD GP - SWIVEL	200	LAMP GP - FLOOD	169
GUARD GP - TRACK GUIDE	222	LEVER GP	523
GUARD GP - TRAVEL MOTOR	224	LIGHTER GP - CIGAR	508
H			
HANDHOLD GP	201	LIGHTING GP - BOOM	164
HARNES AS	96	LIGHTING GP - CAB	162
	108	LIGHTING GP - CHASSIS	161
	146.06	LINES AR - AUXILIARY HYDRAULIC	288
	168	LINES GP - AIR	60
	171	LINES GP - AIR CONDITIONER	548
		LINES GP - AUXILIARY HYDRAULIC	290
		LINES GP - BLADE CYL & VALVE	350
		LINES GP - BLADE CYLINDER	280
		LINES GP - BOOM	284

MACHINE ARRANGEMENT

Consists of :

			Page
1	120-7199	GUARD GP-TRACK GUIDE.....	222
1	137-2813	GUARD GP-SWIVEL.....	200
1	168-0007	BUMPER SET	211
1	170-2593	COUNTERWEIGHT GP.....	206
1	185-9123	GUARD GP-TRAVEL MOTOR	225
1	199-0015	GUARD GP-BOTTOM	197
1	202-1490	FILM GP.....	628

H83187E 01

202-1489 SPECIAL AR
An Attachment

ENGINE ARRANGEMENT

Consists of :

		Page
1	205-6713 ENGINE AR.....	14
1	205-6810 PULLEY GP.....	33

H83188E 01

217-5533 ENGINE AR

MEMORANDA

ENGINE ARRANGEMENT

Consists of :

			Page
BASIC ENGINE			
1	178-6519	GEAR GP-FRONT	26
1	178-6531	MOUNTING GP-ALTERNATOR.....	31
1	196-7979	CAMSHAFT GP.....	24
1	196-8072	COVER GP-VALVE MECHANISM	22
1	205-6782	FLYWHEEL GP.....	29
1	205-6811	CRANKSHAFT GP	23
1	205-6837	CYLINDER HEAD GP.....	16
1	205-6838	VALVE MECHANISM GP	18
1	205-6839	CYLINDER BLOCK GP	20
1	205-6840	HOUSING GP-FRONT	27
1	212-8459	HOUSING GP-FLYWHEEL.....	28
1	212-8460	PAN GP-OIL.....	30
1	212-8461	PISTON & ROD GP.....	25
LUBRICATION SYSTEM			
1	196-7990	LINES GP-ENGINE OIL.....	34
1	196-7991	LINES GP-TURBOCHARGER OIL	38
1	212-8466	FILTER GP-ENGINE OIL	36
1	217-5491	BREATHER GP	35
COOLING SYSTEM			
1	51-8132	COOLER GP-ENGINE OIL.....	48

H93731E 07

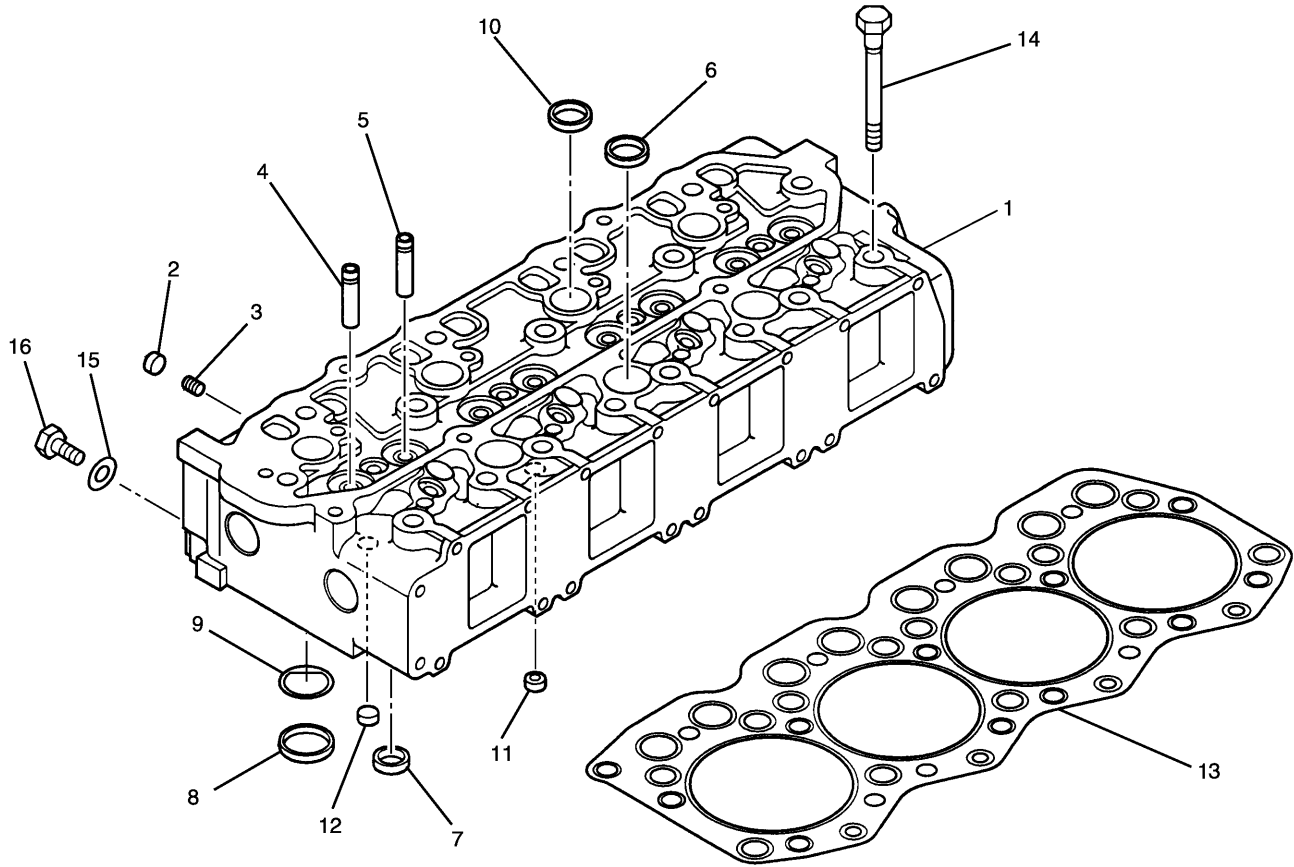
ENGINE ARRANGEMENT

Consists of :

			Page
COOLING SYSTEM			
1	178-6633	PUMP AS-WATER	49
1	196-7994	FAN GP-SUCTION	51
1	196-7995	LINES GP-WATER.....	50
AIR INLET AND EXHAUST SYSTEM			
1	196-7988	TURBOCHARGER GP	65
1	212-8462	MANIFOLD GP-INLET	63
1	212-8463	MANIFOLD GP-EXHAUST	64
1	212-8464	LINES GP-AIR	60
1	212-8465	MUFFLER GP.....	59
FUEL SYSTEM			
1	212-8468	LINES GP-FUEL	74
4	212-8470	NOZZLE GP-UNIT INJECTOR	82
1	212-8471	FILTER GP-FUEL.....	72
1	212-8524	PUMP GP-FUEL INJECTION	76
ELECTRICAL AND STARTING SYSTEM			
1	125-2963	MOUNTING GP-STARTING MOTOR.....	155
1	272-4774	STARTING MOTOR GP-ELECTRIC	156
1	212-8622	ALTERNATOR GP-CHARGING	158
THE FOLLOWING REPAIR KIT IS AVAILABLE:			
1	239-6684	CAP KIT	

H93732E 07

BASIC ENGINE



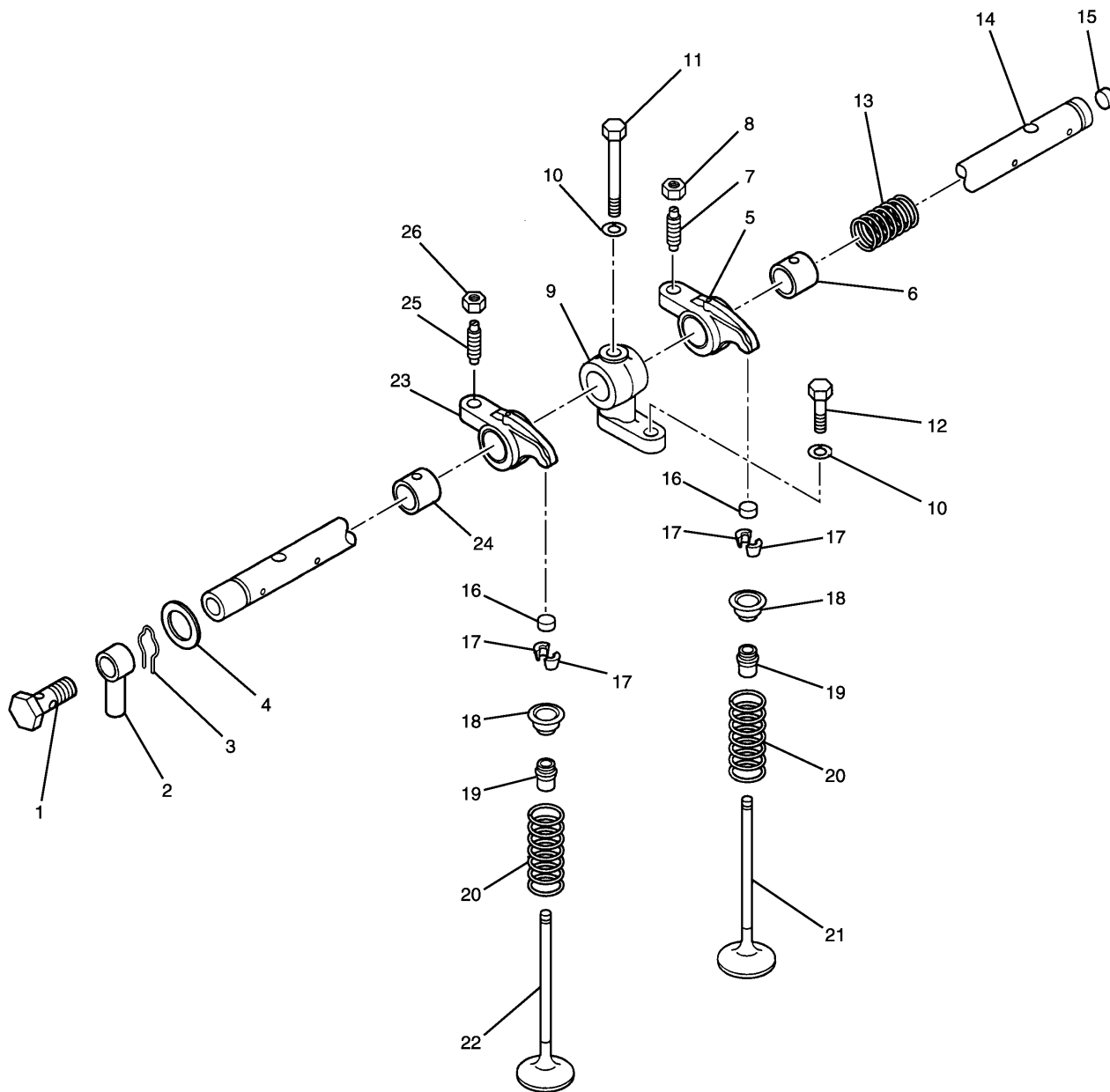
NOTE	No.	PART No.	QTY	PART NAME	NOTE	No.	PART No.	QTY	PART NAME
	1	212-8472	1	HEAD AS					
	2	099-4388	4	CAP					
	3	51-7505	4	PLUG					
	4	183-8172	4	GUIDE (INTAKE)					
	5	183-8173	4	GUIDE (EXHAUST)					
	6	51-4915	10	CAP					
	7	51-8012	4	INSERT (EXHAUST)					
	8	212-8474	4	INSERT (INTAKE)					
	9	212-8473	4	PLATE					
	10	212-8475	4	CAP					
	11	212-8476	3	CAP					
	12	51-7583	2	CAP					
	13	222-8330	1	GASKET					
	14	51-7718	17	BOLT (L=125mm)					
	15	095-2038	1	WASHER					
	16	51-5591	1	PLUG					

H82693E 01

205-6837 CYLINDER HEAD GP
Part of 205-6713-Page14

MEMORANDA

BASIC ENGINE



H76921E 00

205-6838 VALVE MECHANISM GP
Part of 205-6713-Page14