



Specifications Systems Operation Testing and Adjusting

CP-563E, CS-563E, CS-573E and CS-583E Vibratory Compactors Machine Systems

ASA1-Up (Machine)
CEB1-Up (Machine)
BWE1-Up (Machine)
CNG1-Up (Machine)
DAJ1-Up (Machine)
CNN1-Up (Machine)
CNT1-Up (Machine)
CNX1-Up (Machine)

Important Safety Information

Most accidents that involve product operation, maintenance and repair are caused by failure to observe basic safety rules or precautions. An accident can often be avoided by recognizing potentially hazardous situations before an accident occurs. A person must be alert to potential hazards. This person should also have the necessary training, skills and tools to perform these functions properly.

Improper operation, lubrication, maintenance or repair of this product can be dangerous and could result in injury or death.

Do not operate or perform any lubrication, maintenance or repair on this product, until you have read and understood the operation, lubrication, maintenance and repair information.

Safety precautions and warnings are provided in this manual and on the product. If these hazard warnings are not heeded, bodily injury or death could occur to you or to other persons.

The hazards are identified by the "Safety Alert Symbol" and followed by a "Signal Word" such as "DANGER", "WARNING" or "CAUTION". The Safety Alert "WARNING" label is shown below.



The meaning of this safety alert symbol is as follows:

Attention! Become Alert! Your Safety is Involved.

The message that appears under the warning explains the hazard and can be either written or pictorially presented.

Operations that may cause product damage are identified by "NOTICE" labels on the product and in this publication.

Caterpillar cannot anticipate every possible circumstance that might involve a potential hazard. The warnings in this publication and on the product are, therefore, not all inclusive. If a tool, procedure, work method or operating technique that is not specifically recommended by Caterpillar is used, you must satisfy yourself that it is safe for you and for others. You should also ensure that the product will not be damaged or be made unsafe by the operation, lubrication, maintenance or repair procedures that you choose.

The information, specifications, and illustrations in this publication are on the basis of information that was available at the time that the publication was written. The specifications, torques, pressures, measurements, adjustments, illustrations, and other items can change at any time. These changes can affect the service that is given to the product. Obtain the complete and most current information before you start any job. Caterpillar dealers have the most current information available.



When replacement parts are required for this product Caterpillar recommends using Caterpillar replacement parts or parts with equivalent specifications including, but not limited to, physical dimensions, type, strength and material.

Failure to heed this warning can lead to premature failures, product damage, personal injury or death.

Table of Contents

Specifications Section

Hydraulic Tank	4
Hydraulic Tank	4
Hydraulic Oil Filter	5
Gear Pump (Steering)	5
Steering Control Group	6
Metering Pump (Steering)	7
Hydraulic Cylinder (Steering)	7
Suction Fan	7
Gear Motor (Fan Drive)	7
Radiator, Hydraulic Oil Cooler, Air Cooler, and Fuel Cooler	8
Coolant Recovery Group	8
Control Valve (Blade)	8
Leveling Blade	9
Articulating and Oscillating Hitch	10
Operator Platform	10
Rollover Protective Structure (ROPS)	11
Cab Mounting	11
Cab Tilt Cylinder and Mounting Group	11
Instrument Panel	12
Cab Heater Group	13
Refrigerant Compressor	14
Cab Liner	15
Floor Mat	16
Window Wiper and Wiper Motor	16
Rear View Mirror	16
Engine Enclosure	17
Fuel Lines	18
Front Bumper	18
Padded Drum Scraper	18
Alternator	19
Electric Starting Motor	19
Engine Flexible Mounting	19
Battery and Wiring Group	20
Fuel Tank	20
Machine Wiring	21

Systems Operation Section

Introduction	22
Steering, Fan and Leveling Blade System	24
Features	29
Location of Electrical Components	30
Location of Hydraulic Components	31
Electrical System	33
Gear Pump (Steering)	35
Metering Pump (Steering)	38
Gear Motor (Fan Drive)	42
Control Valve (Blade)	45
Electrical Schematic	51
Hydraulic Schematic	51

Testing and Adjusting Section

Troubleshooting

Visual Inspection	53
Steering System Troubleshooting	53

Leveling Blade System Troubleshooting	55
---	----

Testing and Adjusting

Hydraulic Oil Contamination - Test	57
Hydraulic Oil Contamination - Test	57
Gear Pump Flow - Test	58
Relief Valve (Steering) - Test	60
Relief Valve (Leveling Blade) - Test and Adjust	62
Fan Motor Speed (Radiator Cooling) - Test and Adjust	65

Index Section

Index	67
-------------	----

Specifications Section

i01809439

Hydraulic Tank

SMCS Code: 5056

S/N: ASA1-Up

S/N: CEB1-Up

S/N: BWE1-Up

S/N: DAJ1-Up

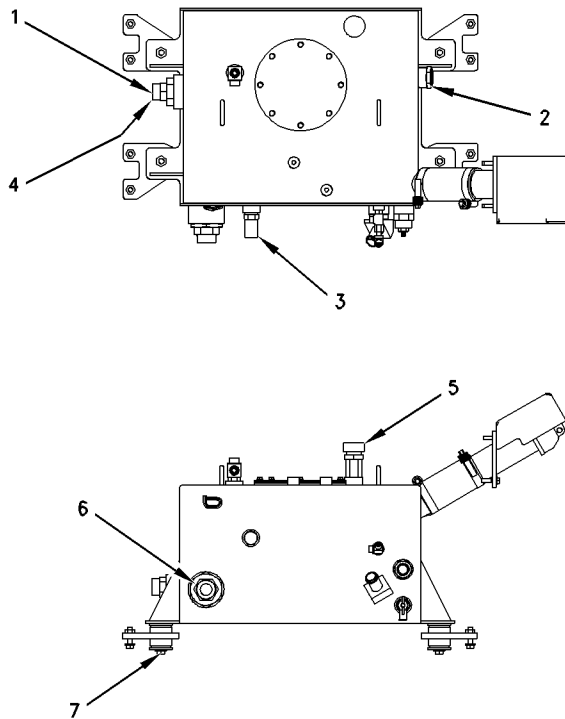


Illustration 1

g00924809

- (1) Torque for suction strainer $210 + 21 - 0$ N·m
($155 + 16 - 0$ lb ft)
- (2) Torque for gauge body assembly 40 ± 5 N·m
(30 ± 4 lb ft)
- (3) Torque for temperature switch
assembly 75 ± 7 N·m (55 ± 5 lb ft)
- (4) Torque for connector
assembly $210 + 21 - 0$ N·m
($155 + 16 - 0$ lb ft)
- (5) Torque for breather valve 95 ± 5 N·m
(70 ± 4 lb ft)

- (6) Torque for suction strainer $300 + 30 - 0$ N·m
($221 + 22 - 0$ lb ft)
- (7) Torque for bolt 95 ± 5 N·m (70 ± 4 lb ft)

i01810683

Hydraulic Tank

SMCS Code: 5056

S/N: CNG1-Up

S/N: CNN1-Up

S/N: CNT1-Up

S/N: CNX1-Up

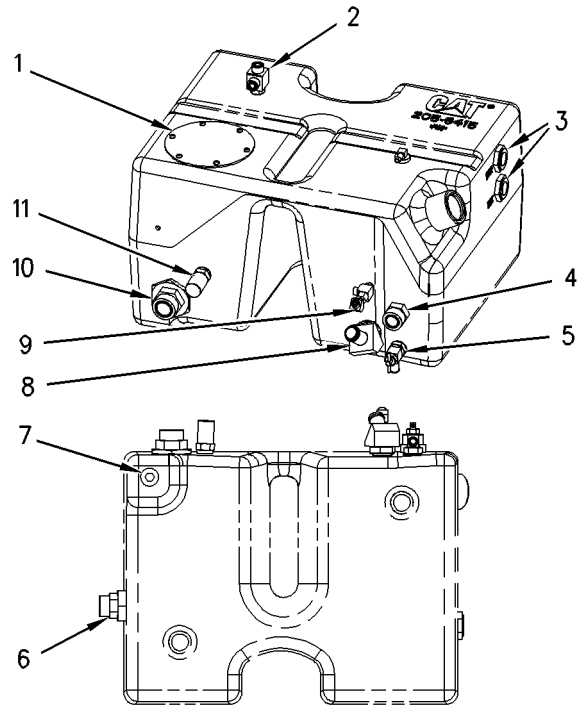


Illustration 2

g00925515

- (1) Torque for the 6 screws $2.8 \pm .2$ N·m
(25 ± 2 lb in)
- (2) Torque for the tee 51 ± 2 N·m (38 ± 2 lb ft)
- (3) Torque for the sight gauges 159 ± 5 N·m
(117 ± 4 lb ft)
- (4) Torque for the temperature switch .. 159 ± 5 N·m
(117 ± 4 lb ft)
- (5) Torque for the valve ... 51 ± 2 N·m (38 ± 2 lb ft)

i01809818

- (6) Torque for the connector 159 ± 5 N·m
(117 ± 4 lb ft)
- (6) Torque for the suction strainer 219 ± 8 N·m
(162 ± 6 lb ft)
- (7) Torque for the plug 96 ± 3 N·m (71 ± 2 lb ft)
- (8) Torque for the elbow 159 ± 5 N·m
(117 ± 4 lb ft)
- (9) Torque for the tee 13 ± 2 N·m (10 ± 2 lb ft)
- (10) Torque for the connector 208 ± 8 N·m
(153 ± 6 lb ft)
- (10) Torque for the suction strainer 240 ± 8 N·m
(177 ± 6 lb ft)
- (11) Torque for the temperature switch .. 51 ± 2 N·m
(38 ± 2 lb ft)

i01809743

Hydraulic Oil Filter

SMCS Code: 5068

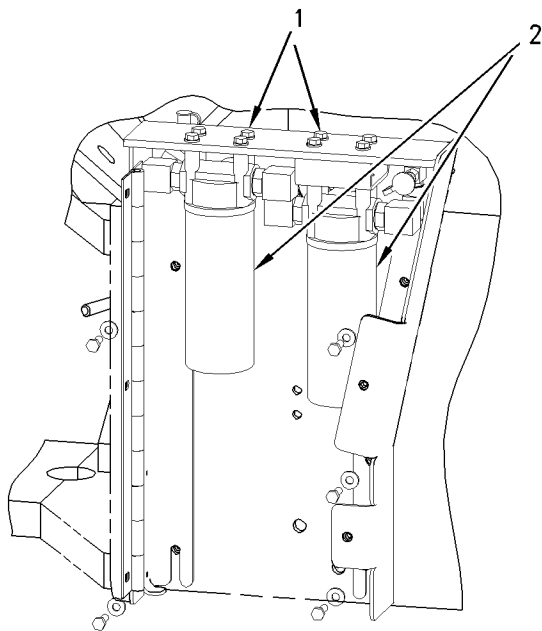


Illustration 3

g00924863

- (1) Torque for bolt for hydraulic filters ... 30 ± 7 N·m
(22.13 ± 5.16 lb ft)
- (2) Bypass pressure setting 345 ± 34 kPa
(50 ± 5 psi)

Gear Pump (Steering)

SMCS Code: 4306; 5073

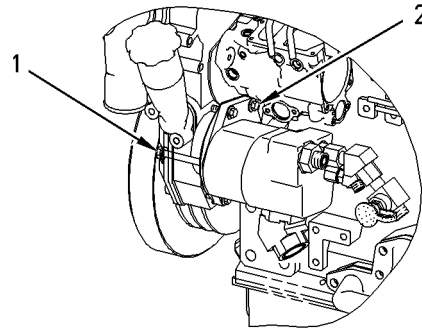


Illustration 4

g00924895

- (1) Apply **9S-3263** Thread Lock Compound on the threads of the bolt.
- (2) Apply **9S-3263** Thread Lock Compound on the threads of the bolt.

Displacement 25.4 cc/rev

Relief valve setting 1900 kPa (2756 psi)

The shaft rotates in the following direction. Clockwise

i01809838

Steering Control Group

SMCS Code: 4309; 4343

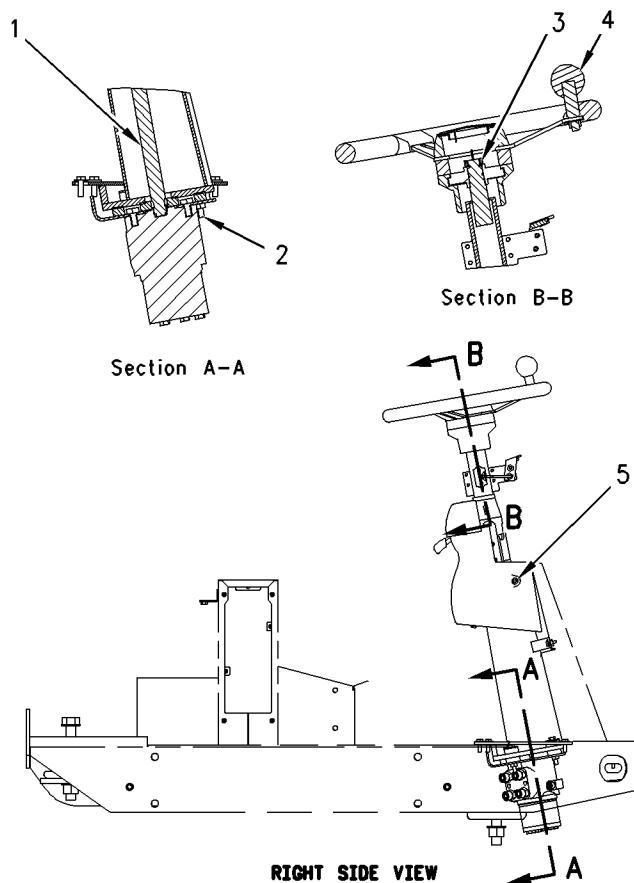


Illustration 5

g00924904

- (1) Apply 6V-4876 Lubricant to the splines.
- (2) Apply 9S-3263 Thread Lock Compound on the threads of the bolt. Torque for bolt .. 33 ± 5 N·m (24.4 ± 3.7 lb ft)
- (3) Torque for nut 37 ± 7 N·m (27.3 ± 5.2 lb ft)
- (4) Torque for jam nut .. 12 ± 1 N·m (8.9 ± 0.7 lb ft)
- (5) Torque for screw 6 ± 1 N·m (4.4 ± 0.7 lb ft)