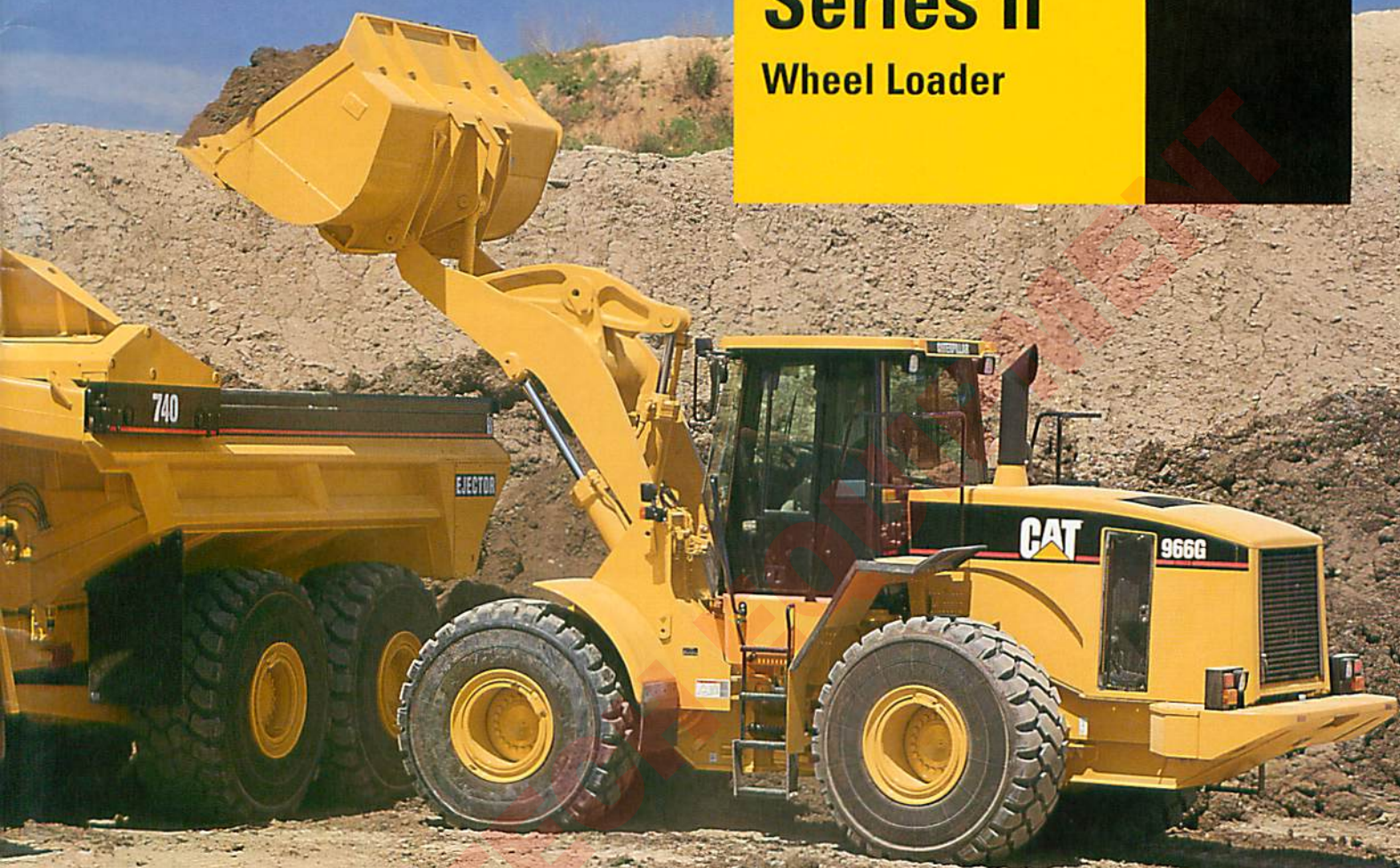


966G Series II Wheel Loader



Engine		
Engine Model	Caterpillar® 3176C with ATAAC	
Flywheel Power	184 kW	246 hp
Max. Flywheel Power	194 kW	260 hp
Weights		
Operating Weight	22 870 kg	50,400 lb
Buckets		
Bucket Capacities	3.5-4.25 m ³ (4.5-5.5 yd ³)	

AMORUSO EQUIPMENT RENTAL CO.
(718)539-9669

www.amorusorental.com

Cat 966 Technical Specifications

Full download: <http://manualslib.com/download/cat-966-technical-specifications/>

Setting the standard for wheel loader productivity, durability, and operator comfort.

Engine

- ✓ Cat® 3176C ATAAC diesel engine is built for performance, durability, excellent fuel economy, low sound levels, and meets all world-wide emission regulations through 2005. **pg. 4**

Electronic Transmission

Planetary power shift transmission with automatic shift capability provides on-the-go speed and direction changes. The Electronic Clutch Pressure Control (ECPC) delivers smoother shifts. Variable Shift Control matches shift patterns to the application. **pg. 5**

Cooling System

- ✓ The G Series II cooling package reduces radiator plugging and contributes to increased fuel efficiency. The new cooling package traps less airborne debris and is more accessible for cleaning. **pg. 6**

Versatility and Application Match

- ✓ Choose from a wide variety of Caterpillar buckets, ground engaging tools, work tools, and special arrangements to match your application. **pg. 12**

Environmental Features

- ✓ The 966G Series II is designed and built with the environment in mind with features including the new 3176C electronic engine, electronically controlled on-demand fan, ecology drains, environmental fluids, and recyclable and remanufacturable components. **pg. 14**

Performance and comfort you can feel, delivering strong breakout force, fast cycle times, and smooth shifts for optimal performance and comfort.



AMORUSO EQUIPMENT RENTAL CO.

(718)539-9669

www.amorusorental.com

This is the cut pages sample. Download all 26 page(s) at: ManualPlace.com