

W14
Articulated Loader
Operators Manual

9-4195





This symbol means ATTENTION! BECOME ALERT! YOUR SAFETY IS INVOLVED. The message that follows the symbol contains important information about your safety. Carefully read the message. Make sure you fully understand the causes of possible injury or death.

SB001

IF THIS MACHINE IS USED BY AN EMPLOYEE, IS LOANED, OR IS RENTED, MAKE SURE THAT THE OPERATOR UNDERSTANDS THE TWO INSTRUCTIONS BELOW.

BEFORE THE OPERATOR STARTS THE ENGINE:

1. GIVE INSTRUCTIONS TO THE OPERATOR ON SAFE AND CORRECT USE OF THE MACHINE.
2. MAKE SURE THE OPERATOR READS AND UNDERSTANDS THE OPERATOR'S MANUAL FOR THIS MACHINE.

WARNING

IMPROPER OPERATION OF THIS MACHINE CAN CAUSE INJURY OR DEATH.

BEFORE STARTING THE ENGINE, DO THE FOLLOWING:

1. READ THE OPERATOR'S MANUAL.
2. READ ALL SAFETY DECALS ON THE MACHINE.
3. CLEAR THE AREA OF OTHER PERSONS.

LEARN AND PRACTICE SAFE USE OF MACHINE CONTROLS IN A SAFE, CLEAR AREA BEFORE YOU OPERATE THIS MACHINE ON A JOB SITE.

It is your responsibility to observe pertinent laws and regulations and to follow manufacturer's instructions on machine operation and maintenance.

See your Authorized Case dealer for additional operator's manuals, parts catalogs, and service manuals.

TABLE OF CONTENTS

Safety Rules	2
To The Case Owner	5
Serial Number Location	7
Specifications	9
Operating Instructions	15
Indicators and Controls	15
Engine Operation	27
Tractor Operation	31
Loader Operating Tips	35
ROPS	39
Fuel and Lubricants	41
Diesel Fuel	41
Lubrication	43
Fuel, Fluids and Lubricants Chart	45
Maintenance	46
Maintenance Schedule Chart	46
Lubrication Points	49
Engine Lubrication System	52
Air Cleaning System	54
Cooling System	59
Drive Belts	63
Fuel System	65
Electrical System	69
Equipment and Steering Hydraulic System	74
Braking System	77
Transmission-Converter Hydraulic System	80
Front and Rear Axles	84
Wheels and Tires	86
Loader	86
Bucket Teeth	88
Tractor Storage	88
Index	92
After Delivery Checkup	97

SAFETY RULES



This machine is dangerous in careless hands. Learn these common sense rules for safe operation and follow them. Your life may depend on them.

It is recommended that these safety rules be copied and posted at the work site.

Pre-Starting

Wear a hard hat, gloves and safety boots. Avoid loose clothing. ROPS* and seat belt* are optional items available from your Authorized Case Dealer.

Always carry a fire extinguisher* and first aid kit and know how to use them.

Know the location of underground cables, gas lines and water mains.

Check the loader visually for leaks and broken, missing or malfunctioning parts.

Clear the loading area of all bystanders and unauthorized persons.

Be sure the operator's area is free of oil, loose objects or ice. During operation take time to clean the operator's area as required.

Operating

The loader is a one man machine. No passengers allowed.

Keep alert. Avoid obstacles. Know where fellow workers are and keep them clear while loading. Know the hand signals, flags or signs to be used on job sites.

Do not use the steering wheel as a handhold for getting on or off the machine.

If the machine is equipped with a ROPS*, fasten the seat belt.

Do not operate the controls from any position other than the operator's seat.

Never leave the loader unattended with the engine running. Set the parking brake, lower the bucket to the ground and shut off the engine. Park machine on level ground or parallel to a slope.

Test steer the loader for proper articulation and braking.

Operate at a speed consistent with working conditions and the terrain. Be extremely careful when working on banks and hillsides.

Keep the loader bucket low enough for good visibility but high enough to clear obstacles when transporting loads.

Keep the transmission in low gear when going down steep hills or inclines. Use the right brake pedal. Never coast with the transmission in neutral.

When transporting the machine, make use of safety equipment available, such as SMV emblem*, flashing lights* and rotating beacon*. Use these safety devices at the work site as well.

Maintenance

Before performing any servicing or maintenance always lock the frame pivot safety link, lower the bucket to the ground and set the parking brake. If the lift arm must be raised, block it up securely.

Never grease, oil or perform any maintenance with the engine running unless so instructed in the operator's or service manual. If a bucket must be raised in order to perform the operation, block the bucket in place first. See page 4.

Do not use the tire inflation kit* if equipped with an alcohol evaporator* unless the air system has been purged of air and the alcohol jar has been emptied.

NOTE: Items followed by an asterisk (*) can be purchased from your Authorized Case Dealer.

A set of loader lift cylinder safety stops can be fabricated from channel stock. Use dimensions shown below. To install, raise the lift arm to full height and position stops over cylinder rods. Lower the lift arm into the stops.

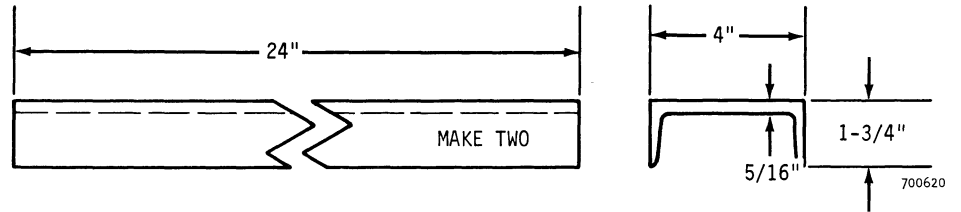


Figure 1

TO THE CASE OWNER

The care you give your Case machine will determine the satisfaction and service life you obtain from it. Use this manual as your guide. By observing instructions and suggestions in this manual, your Case loader will serve you profitably for many years.

As an Authorized Case Dealer, we stock genuine Case parts, which are manufactured with the same precision and skill as the original equipment. Our factory trained staff is kept well informed on the best methods of servicing Case equipment and is ready and able to help you.

A service manual is available at nominal cost, through your Authorized Case Dealer. This publication is recommended for the customer who performs his own maintenance and service.

Should you require additional aid or information, contact us.

Your Authorized Case Dealer

The J. I. Case Company reserves the right to make improvements in design or changes in specifications at any time without incurring any obligation relating to such changes.

To insure prompt and efficient service, please furnish the model and serial numbers of the loader, and any components, parts or equipment that are involved in all correspondence or contacts.



Figure 2



Figure 3

"LEFT-HAND" AND "RIGHT-HAND"

The terms "left-hand" and "right-hand", as used in this manual, indicate the left and right sides of the tractor as viewed from the operator's seat.

SERIAL NUMBER LOCATION

When ordering parts or requesting information from your Authorized Case Dealer, by personal contact or correspondence, always specify the model and serial number of the tractor and the component or equipment in question.



Figure 4

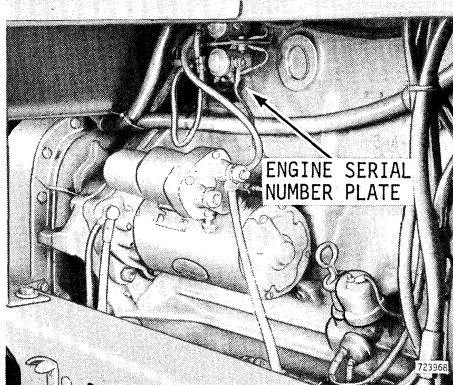


Figure 5

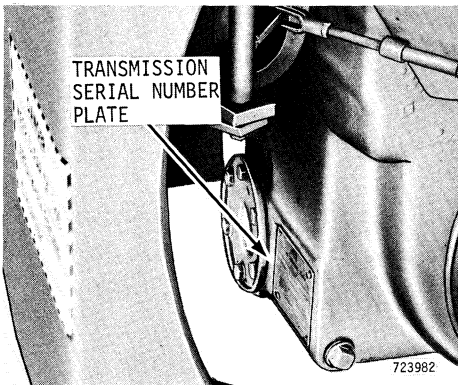


Figure 6

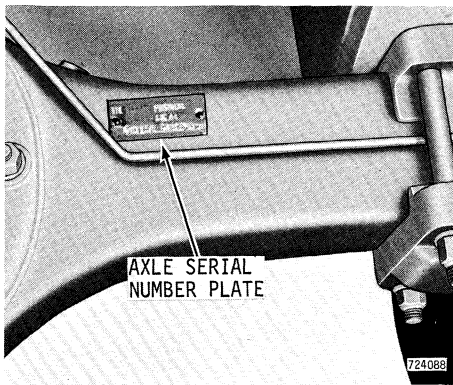


Figure 7

The tractor model and serial number plate is located on the lower right side of the right-hand instrument panel. See Figure 4.

The engine model and serial number plate is located on the front, left side of the engine block above the starter motor. See Figure 5.

The transmission model and serial number plate is located on the front, lower right side of the transmission between the suction screen cover and the drain plug. See Figure 6.

The axle model and serial number plate is located on the driveshaft side of the axle between the center bowl and the axle mounting bolts. See Figure 7.

Record below the model and serial numbers of the tractor, its components, and its equipment.

	MODEL	SERIAL
Tractor	W14	
Engine		
Transmission		
Axle, front		
Axle, rear		