



---

# OPERATOR'S MANUAL

---

## FORKLIFT

586G

588G

SERIES 3

TIER 3



READ, UNDERSTAND, AND FOLLOW ALL SAFETY PRECAUTIONS AND INSTRUCTIONS FOUND IN THIS MANUAL BEFORE OPERATING THE MACHINE.

Bur • Issued 01 April 08

Printed in U.S.A. • Book/Form Number 87657901 NA

Copyright © 2007. CNH America, LLC. All Rights Reserved.

CNH America, LLC reserves the right to make improvements in design or changes in specifications at any time without incurring any obligation to install them on units previously sold.

All data given in this publication is subject to production variations. Dimensions and weights are only approximate. Illustrations do not necessarily show products in standard condition. For exact information about any particular product, please consult your Dealer



This unit first became available 04-2008			
REVISION HISTORY			
Issue	Issue Date	Applicable Machines	Remarks
First Edition	01April 08	586G & 588G Series 3 Tier 3 Forklift	87657901 NA



THIS SAFETY ALERT SYMBOL INDICATES IMPORTANT SAFETY MESSAGES IN THIS MANUAL. WHEN YOU SEE THIS SYMBOL, CAREFULLY READ THE MESSAGE THAT FOLLOWS AND BE ALERT TO THE POSSIBILITY OF DEATH OR SERIOUS INJURY.

Safety Decals on this machine use the words Danger, Warning, or Caution, which are defined as follows:

- **DANGER:** Indicates an immediate hazardous situation that, if not avoided, will result in death or serious injury. The color associated with Danger is RED.
  - **WARNING:** Indicates a potentially hazardous situation that, if not avoided, could result in death or serious injury. The color associated with Warning is ORANGE.
  - **CAUTION:** Indicates a potentially hazardous situation which, if not avoided, may result in minor or moderate injury. It may also be used to alert against unsafe practices. The color associated with Caution is YELLOW.
- If Safety Decals on this machine are ISO two panel Pictorial, decals are defined as follows:

- The first panel indicates the nature of the hazard.
- The second panel indicates the appropriate avoidance of the hazard.
- Background color is YELLOW
- Prohibition symbols such as  and  if used, are RED.

## WARNING

IMPROPER OPERATION OF THIS MACHINE CAN CAUSE DEATH OR SERIOUS INJURY. BEFORE USING THIS MACHINE, MAKE CERTAIN THAT EVERY OPERATOR:

- ② Is instructed in safe and proper use of the machine.
- ② Reads and understands the Manual(s) pertaining to the machine.
- ② Reads and understands ALL Safety Decals on the machine.
- ② Clears the area of other persons.
- ② Learns and practices safe use of machine controls in a safe, clear area before operating this machine on a job site.

It is your responsibility to observe pertinent laws and regulations and follow instructions on machine operation and maintenance.

### CALIFORNIA PROPOSITION 65 WARNING

Diesel engine exhaust and some of its constituents are known to the State of California to cause cancer, birth defects, and other reproductive harm.

Battery post, terminals and related accessories contain lead and lead compounds. Wash hands after handling.

### TECHNICAL MANUALS

Manuals are available from your Dealer for the operation, service, and repair of your machine.

Contact your Dealer for assistance in obtaining the manuals for your machine. Your Dealer can expedite your order for Operator's Manuals, Parts Catalogs, Service Manuals, and maintenance records.

Always give the Machine Name, Model, and P. I. N. (Product Identification Number) or S. N. (Serial Number) of your machine so your Dealer can provide the correct manuals for your machine.

# TABLE OF CONTENTS

## CHAPTER 1

GENERAL INFORMATION	
TO THE OWNER .....	1-1
RIGHT, LEFT, FRONT, AND REAR OF THE MACHINE .....	1-2
IDENTIFICATION NUMBERS .....	1-3
MACHINE COMPONENTS .....	1-5

## CHAPTER 2

SAFETY AND SAFETY DECALS	
TABLE OF CONTENTS .....	2-1
SAFETY AND SAFETY DECALS .....	2-3
SAFETY DECALS .....	2-11
HAND SIGNALS .....	2-18

## CHAPTER 3

INSTRUMENTS AND CONTROLS	
TABLE OF CONTENTS .....	3-1
INSTRUMENT PANEL .....	3-3
OPERATOR'S SEAT .....	3-15
OPERATORS SEAT BELT .....	3-16

## CHAPTER 4

OPERATING INSTRUCTIONS	
TABLE OF CONTENTS .....	4-1
RUN-IN PERIOD OF A NEW MACHINE .....	4-3
ENGINE OPERATION .....	4-3
MACHINE OPERATION .....	4-5
TRANSPORTING THE MACHINE .....	4-10
OPERATING IN HOT WEATHER .....	4-11
OPERATING IN COLD WEATHER .....	4-11
BOOSTER BATTERY CONNECTION TO MACHINE BATTERY .....	4-12
MACHINE STABILITY .....	4-13
LIFTING CAPACITIES .....	4-14

## CHAPTER 5

LUBRICATION, FILTERS, AND FLUIDS	
TABLE OF CONTENTS .....	5-1
LUBRICATION, FILTERS, AND FLUIDS .....	5-3
FLUIDS AND LUBRICANTS .....	5-5
LUBRICATION AND MAINTENANCE QUICK REFERENCE CHART .....	5-6
AS REQUIRED MAINTENANCE .....	5-8
EVERY 10 HOURS (DAILY) .....	5-9
EVERY 50 HOURS .....	5-11
EVERY 250 HOURS .....	5-14
EVERY 500 HOURS .....	5-19
EVER 1000 HOURS .....	5-25
EVERY 2000 HOURS .....	5-30

## CHAPTER 6

MAINTENANCE AND ADJUSTMENTS	
TABLE OF CONTENTS .....	6-1
MAINTENANCE AND ADJUSTMENT .....	6-3
LOAD CONTROL ACCUMULATOR .....	6-5
PARK BRAKE ADJUSTMENT .....	6-6
SEAT BELT INSPECTION AND MAINTENANCE .....	6-6

ROLL-OVER PROTECTIVE STRUCTURE .....	6-7
MACHINE CLEANING .....	6-8
FIRE EXTINGUISHER MOUNTING (IF EQUIPPED) .....	6-9
MACHINE STORAGE .....	6-12

**CHAPTER 7**

ELECTRICAL

TABLE OF CONTENTS .....	7-1
ELECTRICAL SYSTEM .....	7-3

**CHAPTER 8**

SPECIFICATIONS

TABLE OF CONTENTS .....	8-1
SPECIFICATIONS .....	8-3
ENGINE .....	8-3
HYDRAULIC SYSTEM .....	8-3
ELECTRICAL SYSTEM .....	8-3
REPLACEMENT BULBS .....	8-3
CAPACITIES .....	8-4
TRAVEL SPEEDS .....	8-4
WEIGHTS .....	8-5
OPERATING DATA AND DIMENSIONS .....	8-6

**CHAPTER 9**

INDEX

**CHAPTER 10**

AFTER DELIVERY CHECK - DEALER COPY .....	10-1
AFTER DELIVERY CHECK - OWNERS COPY .....	10-3

# Chapter 1

## GENERAL INFORMATION

### TO THE OWNER



BD08C179-02

Figure 1

#### G SERIES FORKLIFT

This manual contains important information about the safe operation, adjustment and maintenance of your Case Forklift. Refer to the Detail Index at the end of this manual for locating specific items about your machine. The Forklift conforms to current safety regulations.

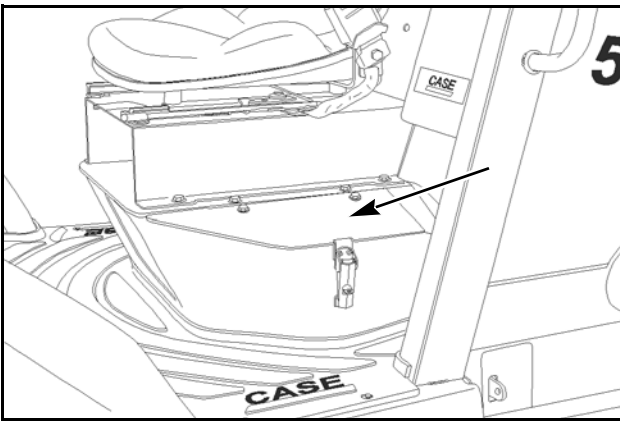
Use this manual as a guide. Your Forklift will remain a reliable working tool as long as it is kept in good working condition and serviced properly.

Do not operate or permit anyone to operate or service this machine until you or the other persons have read and understand the safety, operation and maintenance instructions in this manual. Use only trained operators who have demonstrated the ability to operate and service this machine correctly and safely.

This Forklift, with standard equipment and authorized attachments, is intended to be used for above ground material handling. This machine is not intended to be used for towing other equipment or transporting loads at high speeds.

**Do Not** use this machine for any application or purpose other than those described in this manual. Consult an authorized dealer of the Case Corporation on changes, additions or modifications that can be required for this machine to comply with various country regulations and safety requirements. Unauthorized modifications will cause serious injury or death. Anyone making such unauthorized modifications is responsible for the consequences.

This Operator's Manual is to be stored in the manual compartment equipped on this machine. Make sure this manual is complete and in good condition. Contact your Dealer to obtain additional manuals. Contact your Dealer for any further information or assistance about your machine. Your dealer has Case Corporation approved service parts. Your Dealer has technicians with special training that know the best methods of repair and maintenance for your Forklift.



BD08C215-01

Figure 2

OPERATOR'S MANUAL LOCATED IN THE  
LOCKING BOX LEFT OF SEAT

### RIGHT, LEFT, FRONT, AND REAR OF THE MACHINE

The terms Right-hand, Left-hand, Front, and Rear are used in this manual to indicate the sides as they are seen from the operator's seat.

#### Machine Front



BD08C178-01

Figure 3

#### Machine Right-Hand Side



BD08C180-01

Figure 5

#### Machine Rear



BD08C184-01

Figure 4

#### Machine Left-Hand Side



BD08C177-01

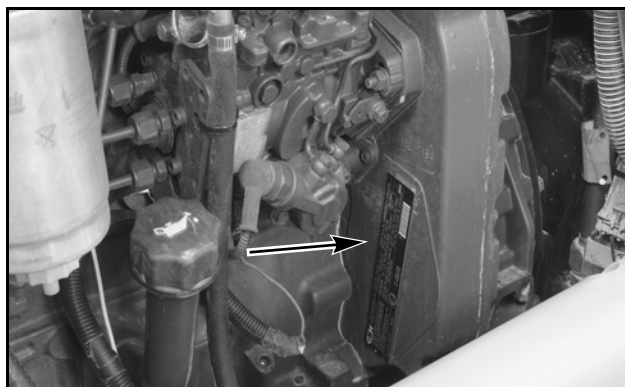
Figure 6

### IDENTIFICATION NUMBERS

Write your machine model number, Product Identification Number (P.I.N.) and serial numbers on the lines provided below. Always give these numbers to your dealer when you need parts or information for your machine.

Make a record of the numbers. Keep the record and your Manufacturer's Statement of Origin in a safe place. If the machine is stolen, report the numbers to your local law enforcement agency.

<b>Machine</b>	
➤ _____ Machine Model and Type	
➤ _____ Product Identification Number: P.I.N.	
➤ _____ Year of Build	
<b>Component Serial Numbers</b>	
➤ _____ Engine serial number	
➤ _____ ROPS Canopy serial number	
➤ _____ Transmission serial number	
➤ _____ Drive Axle serial number	
➤ _____ Steer Axle serial number	
➤ _____ Forklift Mast serial number	



BD08D010-01

Figure 8

**ENGINE SERIAL NUMBER**



BD08C219-01

Figure 9

**ROPS CANOPY PLATE**



BD08C190-01

Figure 7

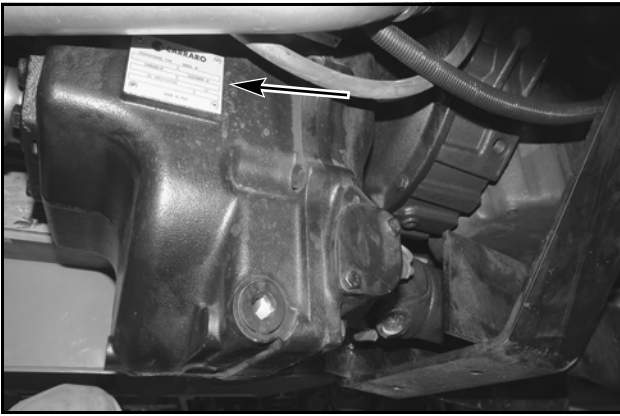
**PRODUCT IDENTIFICATION NUMBER (P.I.N.)**



BD08C180-01

Figure 10

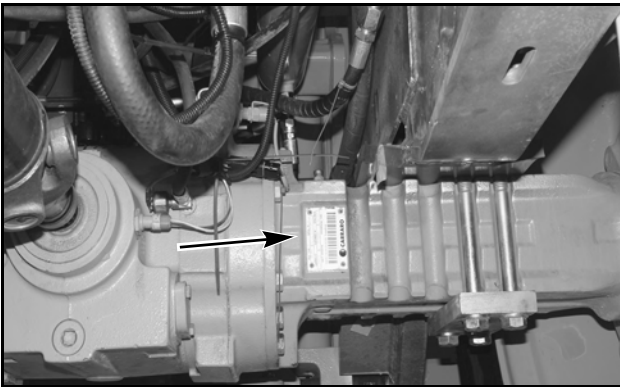
**FORKLIFT MAST**



BD08C252-01

Figure 11

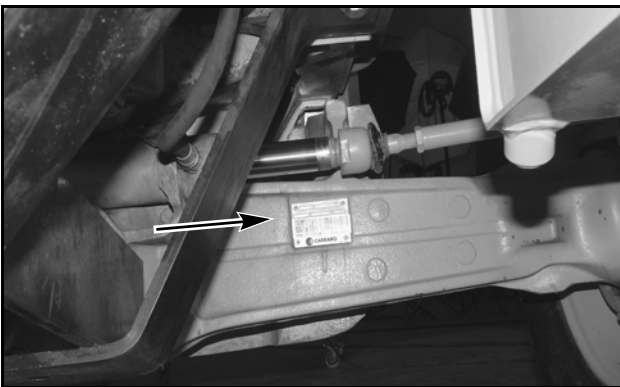
**TRANSMISSION**



BD08C246-01

Figure 12

**DRIVE AXLE**



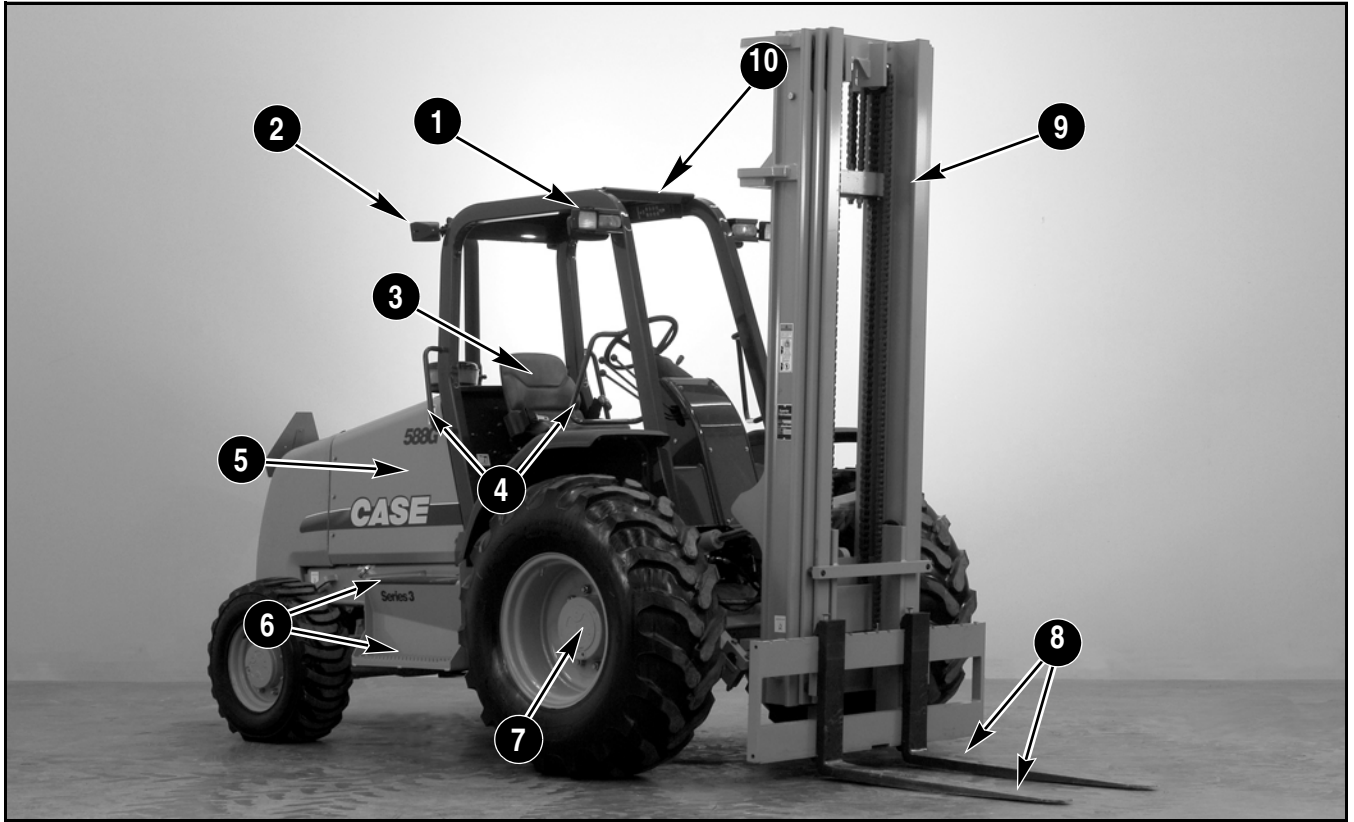
BD08C244-01

Figure 13

**STEER AXLE**



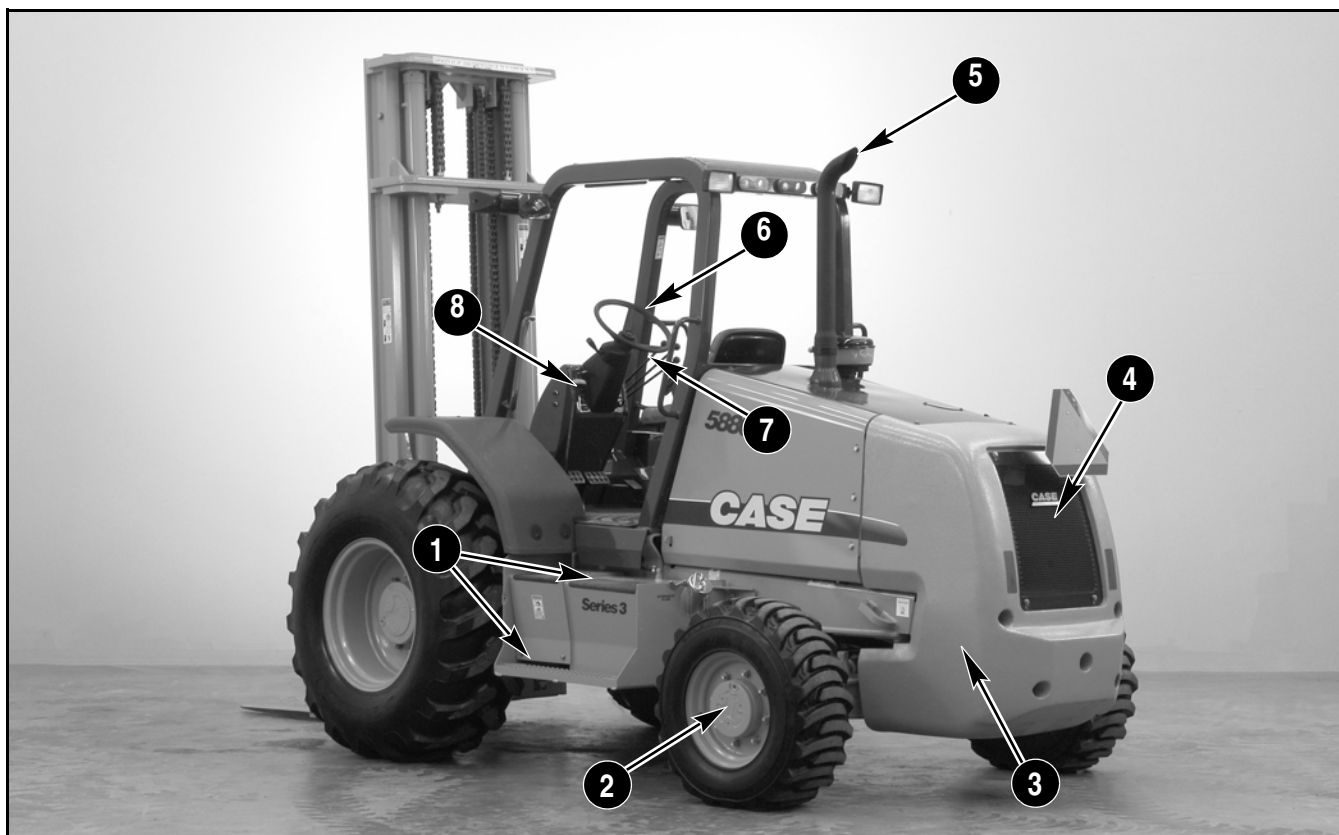
**MACHINE COMPONENTS**



BD08C179-02

Figure 14

1. Front Work Lamps	5. Engine Compartment	9. Standard Mast
2. Rear Work Lamps	6. Steps	10. ROPS Canopy
3. Operator's Seat	7. Drive Axle	11.
4. Grab Handles	8. Lifting Forks	12.



BD08C185-02

Figure 15

1. Operator's Steps	3. Rear Counterweight	5. Exhaust	7. Lift controls
2. Steering Axle	4. Grille / Radiator	6. Steering Wheel	8. Switches