

# **650K, 750K, 850K SERIES 2 CRAWLER**

## **OPERATOR'S MANUAL**

6-85641 NA  
Issued 12-2005

**CASE**



---

# OPERATORS MANUAL

---

CRAWLER DOZER

650K, 750K, 850K  
SERIES 2

---



---

---

CNH America, LLC reserves the right to make improvements in design or changes in specifications at any time without incurring any obligation to install them on units previously sold.

All data given in this publication is subject to production variations. Dimensions and weights are only approximate. Illustrations do not necessarily show products in standard condition. For exact information about any particular product, please consult your Dealer

REVISION HISTORY			
Issue	Issue Date	Applicable Machines	Remarks
First Edition	12-2004	650K, 750K, 850K SERIES 2	6-85640
Revision 1	12-2005	650K, 750K, 850K SERIES 2	6-85641

# TABLE OF CONTENTS

## CHAPTER 1

GENERAL INFORMATION	
TO THE OWNER .....	1-1
RIGHT, LEFT, FRONT, AND REAR OF THE MACHINE .....	1-2
IDENTIFICATION NUMBERS .....	1-3
MACHINE COMPONENTS .....	1-5

## CHAPTER 2

SAFETY AND DECALS	
TABLE OF CONTENTS .....	2-1
SAFETY RULES .....	2-3
BEFORE OPERATION .....	2-3
PERSONAL SAFETY .....	2-4
UTILITY SAFETY .....	2-4
MACHINE OPERATION .....	2-5
PARKING THE MACHINE .....	2-6
FIRE EXTINGUISHER .....	2-6
BURN PREVENTION .....	2-6
HAZARDOUS CHEMICALS .....	2-6
FIRE OR EXPLOSION PREVENTION .....	2-7
MAINTENANCE .....	2-8
DUCTILE IRON .....	2-8
SAFETY DECALS .....	2-9

## CHAPTER 3

INSTRUMENTS AND CONTROLS	
TABLE OF CONTENTS .....	3-1
INSTRUMENT PANEL .....	3-3
BRAKE, DECELERATOR AND FOOTREST .....	3-9
PARKING BRAKES .....	3-9
DIRECTION CONTROL LEVER, TRANSMISSION CONTROL, HAND THROTTLE .....	3-10
DOZER BLADE CONTROL LEVER .....	3-12
CONTROL HANDLE POSITIONS .....	3-14
RIPPER CONTROL LEVER .....	3-14
OPERATORS SEAT .....	3-15
CAB .....	3-16
OPERATORS SEAT BELT .....	3-21

## CHAPTER 4

OPERATING INSTRUCTIONS	
TABLE OF CONTENTS .....	4-1
RUN-IN PERIOD OF A NEW MACHINE .....	4-3
ENGINE OPERATION .....	4-4
CRAWLER OPERATION .....	4-6
MOVING A DISABLED CRAWLER .....	4-17
TRANSPORTING THE MACHINE .....	4-20
OPERATING IN HOT WEATHER .....	4-22
OPERATING IN COLD WEATHER .....	4-22
BOOSTER BATTERY CONNECTION TO MACHINE BATTERY .....	4-24
TILTING THE CAB .....	4-25
DOZER OPERATION .....	4-28
TRACK SYSTEMS .....	4-29
FACTORS CONTROLLING UNDERCARRIAGE WEAR .....	4-31

## CHAPTER 5

### LUBRICATION, FILTERS, AND FLUIDS

TABLE OF CONTENTS	5-1
GENERAL SAFETY BEFORE YOU SERVICE	5-3
SYSTEMGARD LUBRICATION ANALYSIS PROGRAM	5-4
PLASTIC AND RESIN PARTS	5-4
ENGINE HOURMETER	5-4
FLUIDS AND LUBRICANTS	5-5
LUBRICATION AND MAINTENANCE CHART	5-6
GREASE FITTINGS	5-7
ACCESS DOORS	5-9
ENGINE LUBRICATION	5-10
ENGINE SERVICE	5-11
AIR FILTER SYSTEM	5-13
ENGINE COOLING SYSTEM	5-17
DIESEL FUEL SYSTEM	5-19
HYDRAULIC SYSTEM	5-22
TRANSMISSION	5-24
FINAL DRIVES	5-26

## CHAPTER 6

### MAINTENANCE AND ADJUSTMENTS

TABLE OF CONTENTS	6-1
TRACKS	6-3
REVERSIBLE FAN POSITIONS (IF EQUIPPED)	6-6
ROLL-OVER PROTECTIVE STRUCTURE	6-7
MACHINE CLEANING	6-8
ADJUSTING THE RIPPER SHANKS	6-8
DOZER BLADE PITCH ADJUSTMENT	6-9
FIRE EXTINGUISHER MOUNTING (IF EQUIPPED)	6-10
FAN AND AIR CONDITIONING DRIVE BELT	6-10
MACHINE STORAGE	6-11

## CHAPTER 7

### ELECTRICAL

TABLE OF CONTENTS	7-1
ELECTRICAL SYSTEM	7-3
FUSES AND RELAYS	7-5
INSTRUMENT CLUSTER	7-7
ACCESSORY OUTLETS	7-8

## CHAPTER 8

### SPECIFICATIONS

TABLE OF CONTENTS	8-1
ENGINE SPECIFICATIONS	8-3
HYDRAULIC SYSTEM	8-3
TRAVEL SPEEDS	8-3
TRACK SYSTEM	8-4
TRANSPORT LENGTH AND WIDTH WITH BLADE FULLY ANGLED 25 DEGREES	8-5
OPERATING DATA AND DIMENSIONS	8-6
OPERATING DATA AND DIMENSIONS - RIPPER	8-8
WEIGHTS	8-8

## CHAPTER 9

### INDEX

# Chapter 1 GENERAL INFORMATION

## TO THE OWNER



BD04N031

Figure 1

### K SERIES 2 CRAWLER

This manual contains important information about the safe operation, adjustment and maintenance of your Crawler. Refer to the Detail Index at the end of this manual for locating specific items about your machine. The Crawler conforms to current safety regulations.

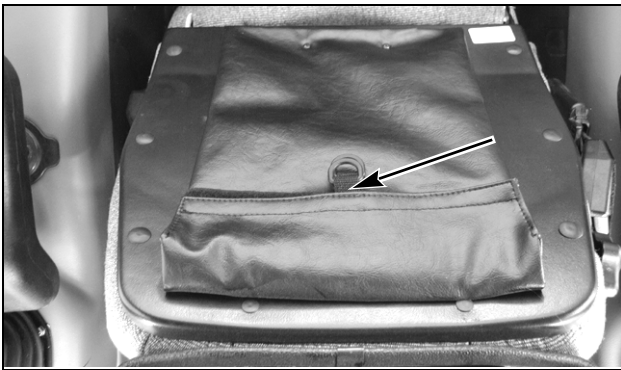
Use this manual as a guide. Your Crawler will remain a reliable working tool as long as it is kept in good working condition and serviced properly.

Do Not operate or permit anyone to operate or service this machine until you or the other persons have read and understand the safety, operation and maintenance instructions in this manual. Use only trained operators who have demonstrated the ability to operate and service this machine correctly and safely.

This Crawler, with standard equipment and authorized attachments, is intended to be used for above ground material handling.

Do Not use this machine for any application or purpose other than those described in this manual. Consult an authorized dealer on changes, additions or modifications that can be required for this machine to comply with various country regulations and safety requirements. Unauthorized modifications will cause serious injury or death. Anyone making such unauthorized modifications is responsible for the consequences.

This Operators Manual is to be stored in the manual compartment equipped on this machine, Make sure this manual is complete and in good condition. Contact your dealer to obtain additional manuals. Contact your dealer for any further information or assistance about your machine. Your dealer has approved service parts. Your dealer has technicians with special training that know the best methods of repair and maintenance for your Crawler.

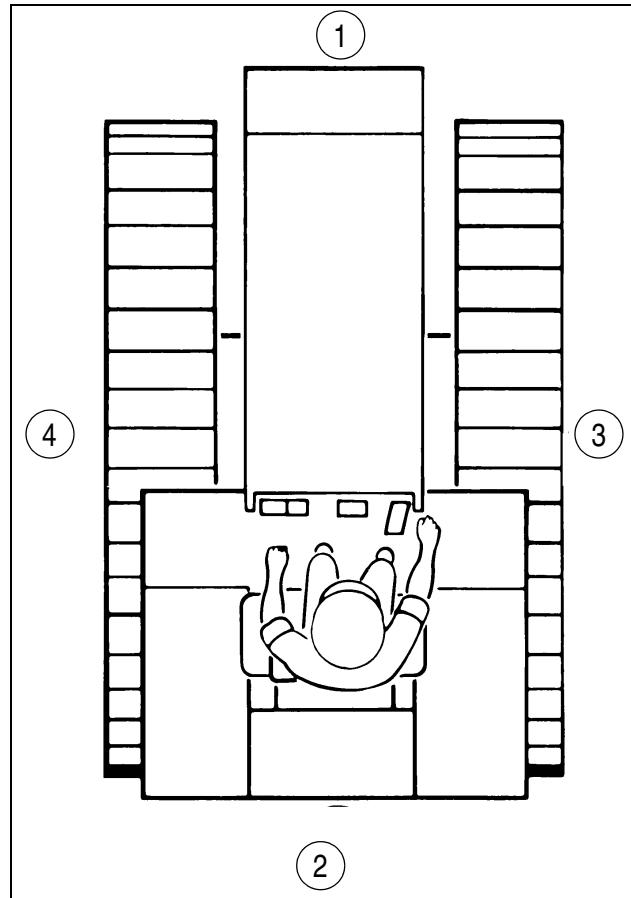


A25808

Figure 2

OPERATOR'S MANUAL POUCH ATTACHED TO SEAT BACK

## RIGHT, LEFT, FRONT, AND REAR OF THE MACHINE



B830800J

Figure 3

1. FRONT  
2. REAR

3. RIGHT-HAND SIDE  
4. LEFT-HAND SIDE

### BASIC MACHINE, DOZER AND RIPPER

The terms Right-hand, Left-hand, Front, and Rear are used in this manual to indicate the sides as they are seen from the operator's seat.

### IDENTIFICATION NUMBERS

Write your machine model number, Product Identification Number (P.I.N.) and serial numbers on the lines provided below. If needed, give these numbers to your dealer when you need parts or information for your machine.

Make a record of the numbers. Keep the record and your Manufacturer's Statement of Origin in a safe place. If the machine is stolen, report the numbers to your local law enforcement agency.

<b>Machine</b>	
➤ _____	Machine Model and Type
➤ _____	Product Identification Number: P.I.N.
➤ _____	Year of Build
<b>Component Serial Numbers</b>	
➤ _____	Engine serial number
➤ _____	Transmission and serial number
➤ _____	ROPS cab or canopy serial number
➤ _____	Dozer blade serial number
➤ _____	



BD02J092 Figure 5

**CAB PLATE IS LOCATED ON THE RIGHT-HAND SIDE REAR POST**

**ENGINE**

**ENGINE PLATE IS LOCATED ON THE LEFT REAR SIDE OF THE ENGINE (4 AND 6 CYLINDER)**



BD04N009 Figure 4

**PRODUCT IDENTIFICATION NUMBER (P.I.N.)**

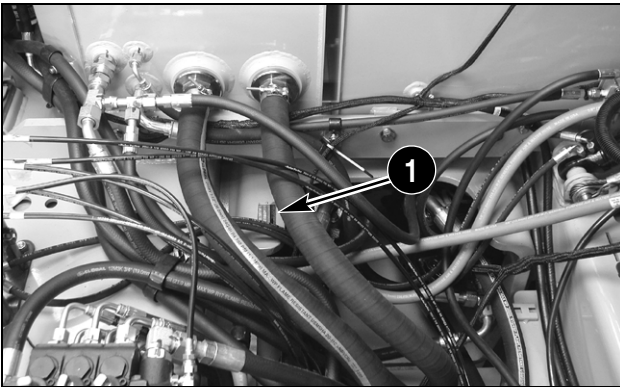
**ROPS CANOPY IS LOCATED ON THE LEFT-HAND UPPER SIDE**



BD02H141

Figure 6

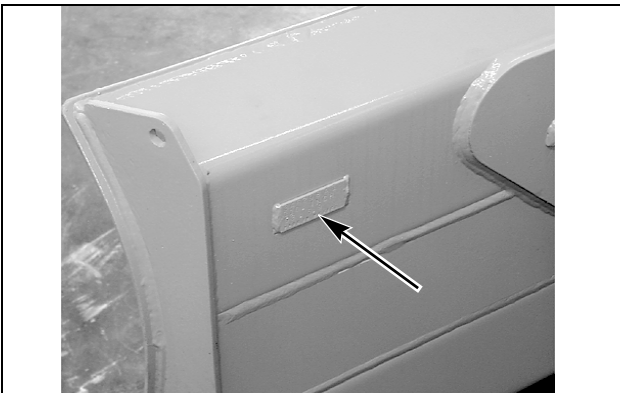
**TRANSMISSION**



BD02J108

Figure 7

**1. ON THE HOUSING UNDER THE CAB**

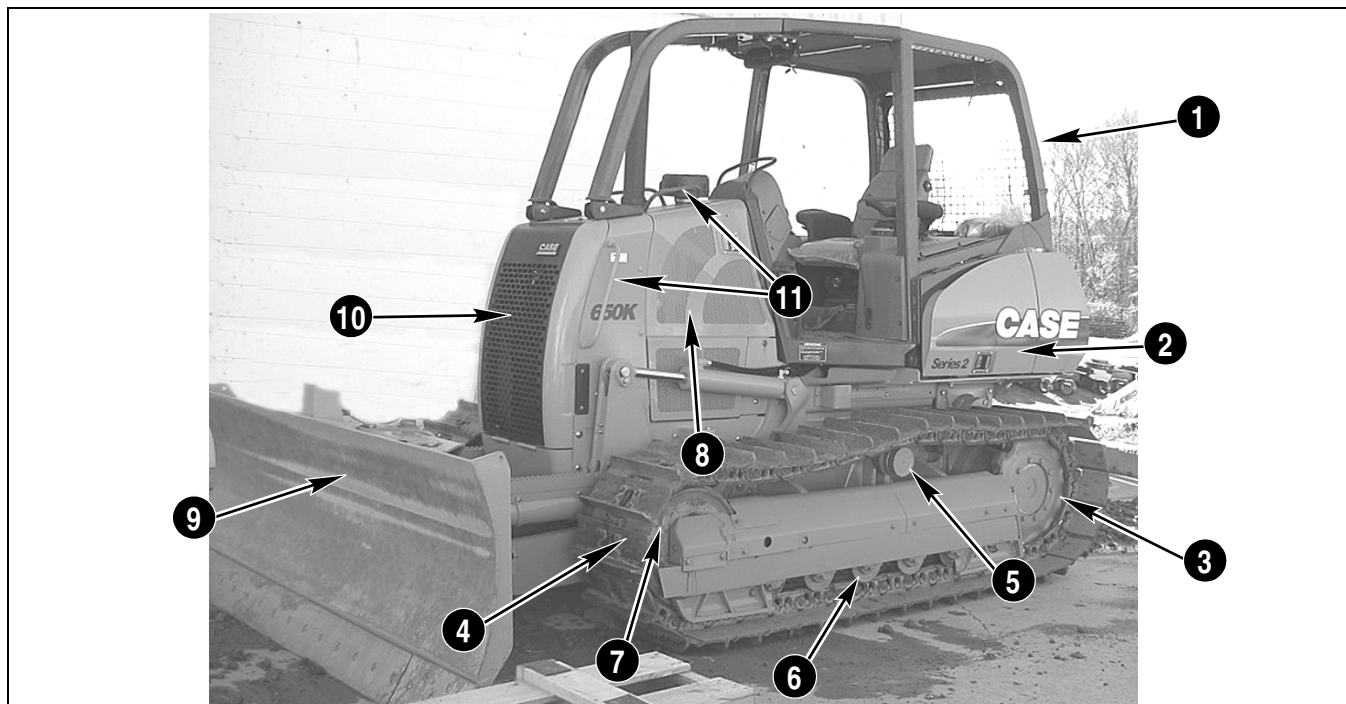


BD99J147

Figure 8

**DOZER BLADE**

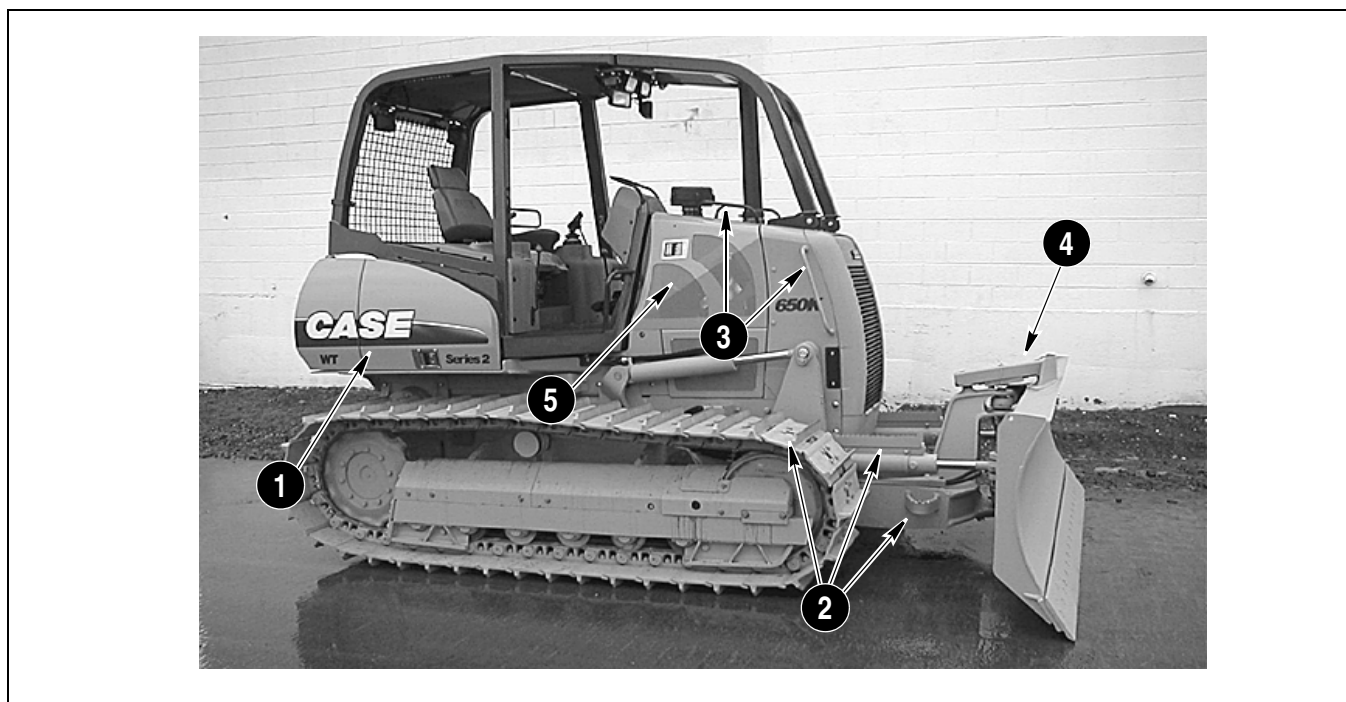
### MACHINE COMPONENTS



BD04N003

Figure 9

- |                               |                                 |                          |
|-------------------------------|---------------------------------|--------------------------|
| 1. ROPS                       | 5. CARRIER ROLLER               | 9. BLADE                 |
| 2. LEFT-HAND REAR ACCESS DOOR | 6. TRACK ROLLER                 | 10. RADIATOR DOOR        |
| 3. SPROCKET                   | 7. IDLER                        | 11. HAND RAILS & HANDLES |
| 4. TRACK                      | 8. LEFT-HAND ENGINE ACCESS DOOR |                          |



BD04N033

Figure 10

- |                           |                                  |
|---------------------------|----------------------------------|
| 1. RIGHT-HAND ACCESS DOOR | 4. BLADE PITCH ADJUSTMENT        |
| 2. STEPS                  | 5. RIGHT-HAND ENGINE ACCESS DOOR |
| 3. HAND RAILS             |                                  |