

CX75SR Crawler Excavators

Table of Contents

DIVISION/SECTION	SECTION N°	REFERENCE N°
1 GENERAL INFORMATION		
Safety, general information and standard torque data	1001	7-27690GB
General specifications and special torque setting	1002	9-53150GB
Electrical and electronic special tools	1004	9-54190GB
Hydraulic special tools	1005	9-54200GB
2 ENGINE		
Removal and installation of the engine	2000	██████████
Radiator and oil-cooler	2001	██████████
Engine specifications	*	
Disassembly and assembly of the engine	*	
3 FUEL SYSTEM		
Fuel tank	3001	██████████
Fuel engine system	*	
4 ELECTRICAL SYSTEM		
Electrical system, electrical and electronic troubleshooting	4001	9-53160GB
Inspection and maintenance of batteries and connecting a booster battery	4002	██████████
5 UNDERCARRIAGE		
Removal and installation of tracks	5001	7-27750GB
Removal and installation of a set of rubber tracks	5002	7-27760GB
Rollers	5003	9-88070GB
Sprocket	5004	9-36890GB
Idler wheel and tension shock absorber	5005	9-88270GB
6 DRIVE TRAIN		
Drive motor and final drive transmission removal and installation	6001	9-88330GB
Drive motor and final drive transmission disassembly and assembly	6002	██████████
Swing reduction gear, removal and installation	6003	██████████
Swing reduction gear, disassembly and assembly	6004	9-88060GB
7 UNDERCARRIAGE HYDRAULICS		
8 UPPERSTRUCTURE HYDRAULICS		
Depressurising and decontaminating the hydraulic system, use of the vacuum pump and bleeding the components	8000	██████████
Specifications, troubleshooting, checks and hydraulic pressure settings	8001	9-53170GB
Hydraulic reservoir removal and installation	8002	9-88630GB
Main and pilot pumps, removal and installation	8003	██████████
Main hydraulic control valve, removal and installation	8004	██████████
Attachment cylinders, removal and installation	8005	9-88490GB
Hydraulic swivel, removal and installation	8006	██████████
Pilot blocs, removal and installation	8007	██████████
Swing motor, removal and installation	8008	██████████
Main hydraulic pump, disassembly and assembly	8010	██████████
Main hydraulic control valve, disassembly and assembly	8011	██████████
Attachment cylinders, disassembly and assembly	8012	9-88350GB
Hand control levers, disassembly and assembly	8013	7-28110GB
Foot control levers, disassembly and assembly	8014	9-88480GB
Solenoid valves, disassembly and assembly	8015	9-88640GB
Caution valve, disassembly and assembly	8016	██████████
Safety valve	8017	██████████
Hydraulic swivel, disassembly and assembly	8018	██████████
Swing motor, disassembly and assembly	8019	██████████
Hydraulic functions	8020	9-53180GB

DIVISION/SECTION	SECTION N°	REFERENCE N°
9 UPPERSTRUCTURE		
Upperstructure, turntable and counterweight.....	9002	9-88520GB
Boom, dipper and bucket.....	9003	██████████
Seat and seat belt.....	9004	██████████
Cab and cab equipment.....	9005	██████████
Air conditioning troubleshooting.....	9006	9-88730GB
Air conditioning unit disassembly and assembly.....	9007	██████████
Air conditioning servicing.....	9008	██████████
Air conditioning components.....	9009	██████████
Large format hydraulic and electrical schematics.....	Pocket	9-43610

* *Consult the Engine Service Manual*

██████████ *Sections to be distributed at a later date*

NOTE: CNH Company reserves the right to make changes in the specification and design of the machine without prior notice and without incurring any obligation to modify units previously sold.

The description of the models shown in this manual has been made in accordance with the technical specifications known as of the date of design of this document.

Section

1001

**SAFETY, GENERAL INFORMATION
AND STANDARD TORQUE DATA**

TABLE OF CONTENTS

GENERAL INFORMATION	3
SAFETY	4
STANDARD TORQUE DATA FOR CAP SCREWS AND NUTS.....	6

GENERAL INFORMATION

Cleaning

Clean all metal parts except bearings, in a suitable cleaning solvent or by steam cleaning. Do not use caustic soda for steam cleaning. After cleaning, dry and put oil on all parts. Clean oil passages with compressed air. Clean bearings in a suitable cleaning solvent. Dry the bearings completely and put oil on the bearings.

Inspection

Check all parts when the parts are disassembled. Replace all parts that have wear or damage. Small scoring or grooves can be removed with a hone or crocus cloth. Complete a visual inspection for indications of wear, pitting and the replacement of parts necessary to prevent early failures.

Bearings

Check bearings for easy action. If bearings have a loose fit or rough action, replace the bearing. Wash bearings with a suitable cleaning solvent and permit to air dry. DO NOT DRY BEARINGS WITH COMPRESSED AIR.

Needle Bearings

Before you press needle bearings in a bore always remove any metal protrusions in the bore or edge of the bore. Before you press bearings into position, put petroleum jelly on the inside and outside diameter of the bearings.

Gears

Check all gears for wear and damage. Replace gears that have wear or damage.

Oil Seals, O-rings and Gaskets

Always install new oil seals, O-rings and gaskets. Put petroleum jelly on seals and O-rings.

Shafts

Check all shafts that have wear or damage. Check the bearing and oil seal surfaces of the shafts for damage.

Service Parts

Always install genuine Case service parts. When ordering refer to the Parts Catalog for the correct part number of the genuine Case replacement items. Failures due to the use of other than genuine Case replacement parts are not covered by warranty.

Lubrication

Only use the oils and lubricants specified in the Operator's or Service Manuals. Failures due to the use of non-specified oils and lubricants are not covered by warranty.

SAFETY



This symbol means ATTENTION! BECOME ALERT! YOUR SAFETY IS INVOLVED. The message that follows the symbol contains important information about safety. Carefully read the message. Make sure you fully understand the causes of possible injury or death.

To prevent injury always follow the Warning, Caution and Danger notes in this section and throughout the manual.

Place a "Do not operate" tag on the starter switch key before carrying out any service or repair work on the machine.



WARNING: *Read the operator's manual to familiarize yourself with the correct control functions.*



WARNING: *Operate the machine and equipment controls from the seat position only. Any other method could result in serious injury.*



WARNING: *This is a one man machine, no riders allowed.*



WARNING: *Before starting engine, study Operator's Manual safety messages. Read all safety signs on machine. Clear the area of other persons. Learn and practice safe use of controls before operating.*

It is your responsibility to understand and follow manufacturers instructions on machine operation, service and to observe pertinent laws and regulations. Operator's and Service Manuals may be obtained from your Case dealer.



WARNING: *If you wear clothing that is too loose or do not use the correct safety equipment for your job, you can be injured. Always wear clothing that will not catch on objects. Extra safety equipment that can be required includes hard hat, safety shoes, ear protection, eye or face protection, heavy gloves and reflector clothing.*



WARNING: *When working in the area of the fan belt with the engine running, avoid loose clothing if possible, and use extreme caution.*



WARNING: *When doing checks and tests on the equipment hydraulics, follow the procedures as they are written. DO NOT change the procedure.*



WARNING: *When putting the hydraulic cylinders on this machine through the necessary cycles to check operation or to remove air from a circuit, make sure all people are out of the way.*



WARNING: Use insulated gloves or mittens when working with hot parts.



WARNING: Lower all attachments to the ground or use stands to safely support the attachments before you do any maintenance or service.



WARNING: Pin sized and smaller streams of hydraulic oil under pressure can penetrate the skin and result in serious infection. If hydraulic oil under pressure does penetrate the skin, seek medical treatment immediately. Maintain all hoses and tubes in good condition. Make sure all connections are tight. Make a replacement of any tube or hose that is damaged or thought to be damaged. DO NOT use your hand to check for leaks, use a piece of cardboard or wood.



WARNING: When removing hardened pins such as a pivot pin, or a hardened shaft, use a soft head (brass or bronze) hammer or use a driver made from brass or bronze and a steel head hammer.



WARNING: When using a hammer to remove and install pivot pins or separate parts using compressed air or using a grinder, wear eye protection that completely encloses the eyes (approved goggles or other approved eye protectors).



WARNING: Use suitable floor (service) jacks or chain hoist to raise wheels or tracks off the floor. Always block machine in place with suitable safety stands.



WARNING: When servicing or repairing the machine, keep the shop floor and operator's compartment and steps free of oil, water, grease, tools, etc. Use an oil absorbing material and/or shop cloths as required. Use safe practices at all times.



WARNING: Some components of this machine are very heavy. Use suitable lifting equipment or additional help as instructed in this Service Manual.



WARNING: Engine exhaust fumes can cause death. If it is necessary to start the engine in a closed place, remove the exhaust fumes from the area with an exhaust pipe extension. Open the doors and get outside air into the area.

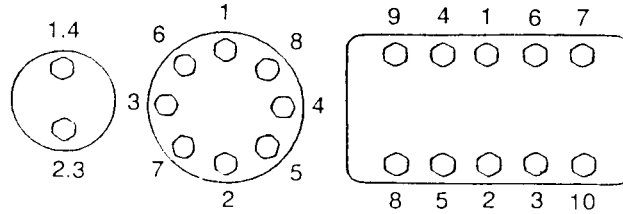


WARNING: When the battery electrolyte is frozen, the battery can explode if (1), you try to charge the battery, or (2), you try to jump start and run the engine. To prevent the battery electrolyte from freezing, try to keep the battery at full charge. If you do not follow these instructions, you or others in the area can be injured.

STANDARD TORQUE DATA FOR CAP SCREWS AND NUTS

Tightening of Cap Screws and Nuts

Tighten alternately so that tightening torque can be applied evenly. The numbers in the figure below indicate the order of tightening.



JS00481A

Cap screws which have had Loctite used (white residue remains after removal) should be cleaned with light oil or suitable cleaning solvent and dried. Apply 2-3 drops of Loctite to the thread portion of the cap screw and then tighten.

Torque Table

Tighten cap screws and nuts according to the table below if there are no other special instructions.

Cap Screw Name Size (Size)			M6	M8	M10	M12	M14	M16	M18	M20
Cap Screw	Spanner	[mm]	10	13	17	19	22	24	27	30
		[in.]	0.39	0.51	0.67	0.75	0.87	0.95	1.06	1.18
	Tightening torque	[Nm]	6.9	19.6	39.2	58.8	98.1	157.2	196.0	274.0
		[lb-ft]	5.1	14.5	29.0	43.4	72.5	116.0	144.6	202.4
Socket Head Cap Screw	Spanner	[mm]	5	6	8	10	12	14	14	17
		[in.]	0.20	0.24	0.32	0.39	0.47	0.55	0.55	0.67
	Tightening torque	[Nm]	8.8	21.6	42.1	78.4	117.6	176.4	245.0	343.0
		[lb-ft]	6.5	15.9	31.1	57.8	86.8	130.1	180.8	253.1

Section 1002

1002

SPECIFICATIONS AND SPECIAL TORQUE SETTINGS

TABLE OF CONTENTS

TYPE, SERIAL NUMBER AND CONSTRUCTION YEAR OF THE MACHINE.....	4
Machine.....	4
Engine	4
Serial numbers of the components	4
 INGREDIENTS	 5
Hydraulic fluid	5
Transmission assembly oil	5
Greases	5
Engine oil	6
Viscosity of oils/Operating range of oils	6
Low fuel	7
Antifreeze/anticorrosive	7
Environment	7
Plastic and resin parts	7
 SPECIFICATIONS.....	 8
Engine	8
Capacities	8
Electrical system	8
Hydraulic system.....	9
Cylinder	9
Control valve	10
Swing	10
Travel	10
Undercarriage	10
Attachment.....	10
Weight of components	11
 TRACK DIMENSIONS AND WEAR LIMIT	 12
Sprocket	12
Idler wheel.....	13
Upper roller	14
Lower roller	15
Track	16
 DIMENSIONS AND WEAR LIMITS OF MONOBLOC BOOM ATTACHMENT LINKAGES	 17
Boom foot/Frame	17
Boom cylinder foot/Frame	18
Boom cylinder head/Boom	18
Dipper cylinder foot/Boom.....	19
Boom/Dipper	19
Dipper cylinder head/Dipper.....	19
Bucket cylinder foot/Dipper	20
Connecting rod/Dipper	20
Compensator/Bucket.....	20
Connecting rod/Compensator/Bucket cylinder head.....	21
Dipper/Bucket.....	21

DIMENSIONS AND WEAR LIMITS OF BACKHOE-OFFSET BOOM ATTACHMENT LINKAGES	22
Preboom head/Backhoe-offset boom	22
Preboom/Backhoe-offset cylinder foot - backhoe-offset rod	23
Backhoe-offset cylinder head/Backhoe-offset boom	23
Backhoe-offset rod/Backhoe-offset dipper	23
Backhoe-offset boom/Backhoe-offset dipper	24
Backhoe-offset dipper/dipper cylinder	24
Backhoe-offset dipper/Dipper	24
Dipper cylinder head/Dipper	25
Backhoe-offset dipper/Dipper	25
 DIMENSIONS AND WEAR LIMITS OF DOZER BLADE LINKAGES	 26
Dozer blade cylinder foot/Dozer blade	26
Dozer blade cylinder foot/Undercarriage	27
Dozer blade/Undercarriage	27
 SPECIAL TORQUE SETTINGS	 28
 MACHINE MAXIMUM DIMENSIONS	 31
Monobloc boom + dozer blade	31
Backhoe-offset boom + dozer blade	32



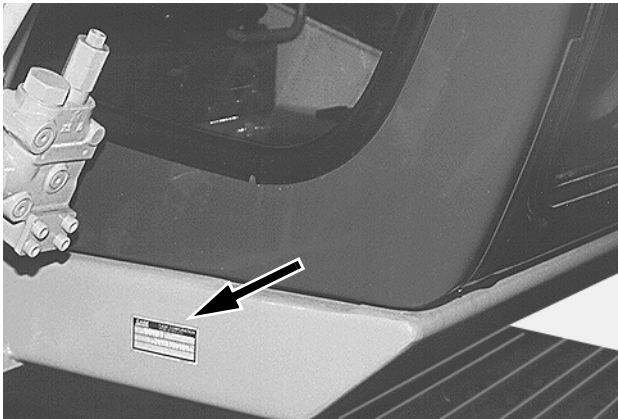
WARNING: *This symbol is used in this manual to indicate important safety messages. Whenever you see this symbol, carefully read the message which follows. Your safety depends on it.*

TYPE, SERIAL NUMBER AND CONSTRUCTION YEAR OF THE MACHINE

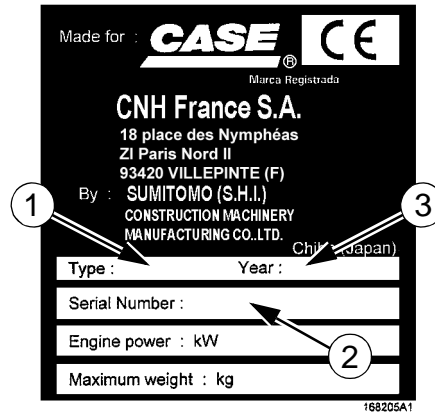
For all part orders, request for information or assistance, always specify the type and the serial number of the machine to your CASE dealer.

Fill in the following lines with the required information: Type, serial number, year of manufacture of the machine and the serial numbers of the hydraulic and mechanical components.

Machine



CP98N006



168205A1

CS01J532

- (1) Type.....
- (2) Serial number
- (3) Year of manufacture

Engine

Make and type

Serial number

Serial numbers of the components

Hydraulic pump.....

Swing reduction gear.....

Travel reduction gears

Travel control valve

Attachment control valve

Swing control valve.....

INGREDIENTS

The ingredients must correspond to specific characteristics for every usage.



WARNING: *You must respect the operating conditions for the different ingredients.*

Hydraulic fluid

The CASE hydraulic fluid is specially adapted for high pressure and CASE's hydraulic circuit. The type of fluid to be used depends on the ambient temperature.

Temperate climates

-20°C to +40°C
Fluid type ISO VG 46
CASE reference: POHYDR

Hot climates

0°C to +60°C
Fluid type ISO VG 100
CASE reference: POHYPC

Cold climates

-40°C to +20°C
Fluid type ISO VG 22
CASE reference: POHYPF

Temperate climate biodegradable fluid:

This yellow-coloured fluid is miscible with standard fluid. When introducing this fluid, it is recommended to drain the hydraulic system completely.
Fluid type ISO VG 46
CASE reference: CASYNTH 46

These different grades of fluids must comply with the CASE specification.

Transmission assembly oil

Extreme pressure oil used for transmission assemblies in housing.
Extreme pressure oil TYPE API GL5 GRADE 80W90 and ISO VG 150

Greases

The type of grease to be used depends on the ambient temperature.

Hot and temperate climates

-20°C to +60°C
Extreme pressure EP NLGI grade 2 grease with molybdenum disulfide.

Cold climates

-40°C to +20°C
Extreme pressure EP NLGI grade 0 grease.

Engine oil

The CASE No. 1 engine oil is recommended for your engine. This oil ensures proper lubrication of your engine for all operating conditions.

If you are unable to procure the CASE No. 1 Multiperformance or Performance engine oil, use the corresponding oil from the API/CG/CF category.

NOTE: Do not put any performance additives or any other additives in the engine housing. The oil changing intervals are indicated in this manual based on tests carried out on CASE lubricants.

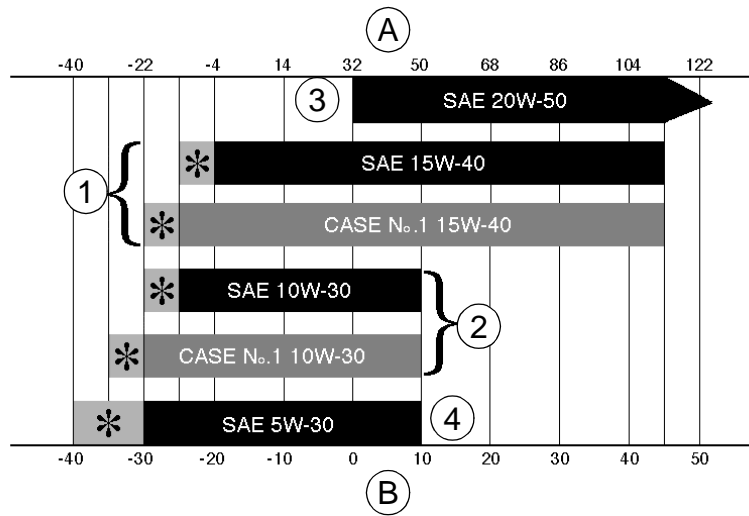


RD97F136



RB97F100

Viscosity of oils/Operating range of oils



(A) FAHRENHEIT TEMPERATURE

(B) CELSIUS TEMPERATURE

(1) ALL SEASONS

(2) WINTER

(3) TROPICAL

(4) ARCTIC

(*) SHOWS THAT IT IS NECESSARY TO USE AN ENGINE OIL HEATER OR THERMAL COOLER.

CS98M561

Low fuel

The fuel to be used must comply with the D975 norm of the American Society for Testing and Materials (ASTM).

Use type No. 2 fuel, use of other fuels can cause a loss of engine power and excessive fuel consumption.

In cold weather, it is provisionally accepted that a mixture of No. 1 and No. 2 fuels be used. Contact your fuel supplier.

If the temperature drops below the freezing point of the fuel (point where paraffin appears), paraffin crystals in the fuel will cause loss of engine power or starting trouble.

IMPORTANT: *In cold weather, fill up the reservoir with fuel after each workday, in order to avoid the formation of condensation.*

Storing fuel

Prolonged storage of fuel promotes the accumulation of foreign bodies or condensed moisture in the storage tank. Many engine failures are caused by the presence of water in fuel.

The storage tank must be placed outside and the fuel should be maintained at as low a temperature as possible. Drain the condensed moisture at regular intervals.

Antifreeze/anticorrosive

Use the antifreeze in all seasons to protect the coolant system from corrosion and to avoid any risk of freezing.

In environments with a temperature greater than -36°C, use a 50% mixture of antifreeze in an ethylene glycol base.

In environments with a temperature less than -36°C, it is recommended that you use a 40% water and 60% antifreeze mixture.

Environment

Before carrying out any maintenance operation on this machine and before throwing away the liquids or lubricants used, always think of the environment. Never throw oil or liquids on the ground and never put them in leaking containers.

Consult your local centre for ecological recycling for information on the appropriate method for disposing off these substances.

Plastic and resin parts

When cleaning plastic parts, on the console, the instrument panel, the indicator and gauges etc., do not use petrol, paraffin, paint solvents, etc. Use only water, soap and a soft cloth.

The use of petrol, paraffin, paint solvents etc. causes discoloration, cracks or deformation of these parts.

SPECIFICATIONS

Engine

Make Isuzu
 Model CC-4JG1

Type: four stroke, water cooled with overhead valves, in-line cylinders with direct injection.

Number of cylinders 4
 Bore and stroke 95.4 x 107 mm
 Displacement 3059 cm³

Operating conditions

Idle 1000 rpm
 Max speed 2100 rpm
 Power ECC 1289 39.1 kW (52.5 HP)
 Max torque 184 Nm at 1800 rpm

Capacities

Engine oil capacity 9.6 litres
 Engine cooling circuit 9.6 litres
 Capacity of only the radiator 3.9 litres
 Fuel reservoir 100 litres
 Hydraulic fluid reservoir capacity 50 litres
 Total hydraulic circuit capacity 95 litres
 Capacity of only the oil-cooler 3.5 litres
 Travel reduction gear housing capacity 1.3 litres
 Swing drive housing capacity X litres
 Idler pulley capacity XXX cm³
 Upper roller capacity XX to XX cm³
 Lower roller capacity XXX cm³

NOTE: *These capacities are given only for information purposes. To check the fluid levels, always use the oil gauge, visual gauges or the filler cap.*

Electrical system

Type of system 12 volts negative earth
 Alternator capacity 50 A

Battery

Number of batteries required 1
 Voltage of each battery 12 V
 Capacity 64 Ah
 Reserve 160 min
 Cold startability at -17° 800 A
 Load for load control 400 A

Starter

Voltage 12 V
 Power 2.2 kW

Voltage regulator built-in, without adjustment

Hydraulic system

Main hydraulic pump

Variable flow double pump, with axial pistons.

Maximum flow.....	2 x 71.4 l/min
Displacement.....	2 x 34 cm ³

Hydraulic pilot pump

Fixed flow pump

Max flow	22.5 l/min
Displacement.....	10.7 cm ³

Option hydraulic pump

Fixed flow pump

Max flow	25.4 l/min
Displacement.....	12.1 cm ³

Pressure setting

Pilot circuit relief	42 ± 1 bar
Main circuit relief (standard)	294 ± 3 bar
Main circuit relief (option)	226 ± 3 bar
Secondary relief (Boom, dipper and bucket)	319 ± 5 bar
Secondary relief (swing)	226 ± 4 bar
Secondary relief (travel)	294 ± 5 bar
Secondary relief (dozer blade)	255 ± 5 bar
Secondary relief (backhoe-offset).....	333 ± 5 bar
Safety valve (boom and dipper).....	314 ± 5 bar

Cylinder

Boom cylinder

Cylinder bore	110 mm
Rod diameter	70 mm
Stroke	911 mm

Dipper cylinder

Cylinder bore	95 mm
Rod diameter	60 mm
Stroke	797 mm

Bucket cylinder

Cylinder bore	85 mm
Rod diameter	55 mm
Stroke	665 mm

Dozer blade cylinder

Cylinder bore	100 mm
Rod diameter	60 mm
Stroke	180 mm

Backhoe-offset dipper cylinder

Cylinder bore	95 mm
Rod diameter	60 mm
Stroke	685 mm

Backhoe-offset cylinder

Cylinder bore	95 mm
Rod diameter	55 mm
Stroke	315 mm

Cylinder leakage - attachment lowering (without load)

Boom cylinders (rods retracted)	3 mm/5 min
Dipper cylinder (rod extended)	5 mm/5 min
Dipper cylinder (rod extended)	7 mm/5 min
Total (at the end of the attachment)	200 mm/5 min

Control valve

Five-element control valve for dipper, boom acceleration, swing, option and left-hand travel.

Four-element control valve for dipper, bucket, boom acceleration and right-hand travel.

Two-element control valve for dozer blade and backhoe-offset boom.

Load holding relief valve for boom and dipper.

Swing

Fixed flow engine with axial pistons.

Automatic disk brakes.

Upperstructure frame swing speed	13.4 rpm
Displacement	44.1 cm ³
Working flow	XXX l/min
Reduction ratio	20.6
Brake torque	158.3 Nm
Minimum brake release pressure	15 bar
Permitted leak at motor	XX l/min

Travel

Two-speed motor with axial pistons.

Automatic disk brakes.

Low speed	3.4 kph
High speed	4.9 kph
Gradeability	70% (35°)
Tractive force	6200 daN
Displacement	32.6/21.3 cm ³
Work flow	68 l/min
Reduction ratio	66.5
Braking torque (reduction gear excluded)	64.5 Nm
Permitted leak at motor	XX l/min

Undercarriage

Monobloc frame with fabricated elements.

Lubricated rollers and idler wheels.

Grease track tension.

Ground pressure with 450 mm track pads	0.34 bar
Track tension	240 to 260 mm

Attachment

Break-out force	5690 daN
Break-out force	
1.71 m dipper	3830 daN
1.75 m dipper (backhoe-offset)	3940 daN