

CX135SR Crawler excavator

Table of contents

	REFERENCE N°
SERVICE MANUAL.....	9-40641GB
ENGINE SERVICE MANUAL (BB - 4BG1T).....	*
LARGE FORMAT HYDRAULIC AND ELECTRICAL SCHEMATICS.....	9-43660

* *Consult the Engine Service Manual*

Configurations contained in this Service Manual:

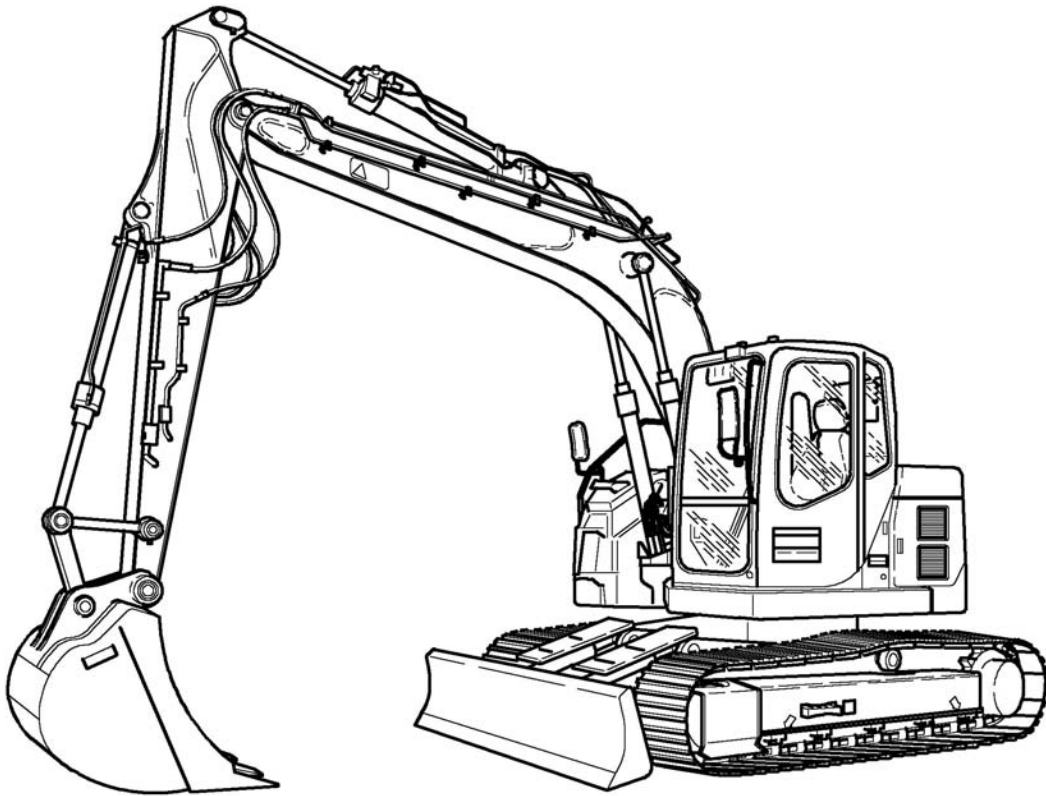
CX135SR NA	(North Model América)
CX135SR WE	(Model Europe)
CX135SR MONOBLOC BOOM	(Model equipped with monobloc boom)
CX135SR OFFSET BOOM	(Model equipped with offset boom)

NOTE: CNH Company reserves the right to make changes in the specification and design of the machine without prior notice and without incurring any obligation to modify units previously sold.

The description of the models shown in this manual has been made in accordance with the technical specifications known as of the date of design of this document.

CASE

REPAIR MANUAL



CX135SR

Contents

INTRODUCTION
DISTRIBUTION SYSTEMS
POWER PRODUCTION
TRAVELLING
BODY AND STRUCTURE
FRAME POSITIONING
WORKING ARM
TOOLS AND COUPLERS

A
B
D
E
F
H
J



INTRODUCTION

Contents

INTRODUCTION

Foreword (- A.10.A.40) CX135SR	3
Safety rules (- A.50.A.10) CX135SR	4
Basic instructions (- A.90.A.05) CX135SR	6
Torque (- A.90.A.10) CX135SR	7
Torque (- A.90.A.10) CX135SR	8
Dimension (- A.92.A.30) CX135SR	11
Weight (- A.92.A.40) CX135SR	14
Consumables (- A.92.A.55) CX135SR	15
Hydraulic contamination (- A.92.A.60) CX135SR	18
Product identification (- A.80.A.10) CX135SR WE	20
Product identification (- A.80.A.10) CX135SR NA	21

Foreword (- A.10.A.40)

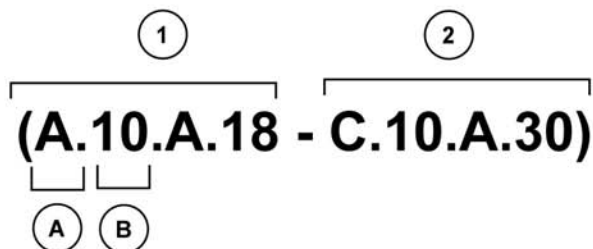
CX135SR

INTRODUCTION TO THE REPAIR MANUAL

This manual has been designed so that in the near future it can be made available on CD and in a database via a computer network.

This will allow fast and targeted search and navigation between the various information modules.

Information search



CRIL03J033E01 1

This manual is organised according to types of function and information.

- The function and information types are codified and appear in parentheses after the title and separated by a dash:
(1) Function
(2) Information type.
- Only the first letter **(A)** and the first number **(B)** of the function need to be used for the information search.
 The first letter **(A)** corresponds to the sections of the repair manual.
 The first number **(B)** corresponds to the chapters of the repair manual.
 The first part of the **(A.B)** code is reflected in the page numbering.
 THE REST OF THE CODING IS NOT LISTED IN ALPHA-NUMERIC ORDER IN THIS MANUAL.
- You will find a table of contents at the beginning and end of each section and chapter.
 You will find an alphabetical index at the end of each chapter.
- Therefore it is the first part of the **(A.B)** coding, then the tables of contents and index (page numbers) which will allow you to quickly find the information you are looking for.

Safety rules (- A.50.A.10)

CX135SR

**CAUTION**

M171C - THIS SAFETY ALERT SYMBOL INDICATES IMPORTANT SAFETY MESSAGES IN THIS MANUAL. WHEN YOU SEE THIS SYMBOL, CAREFULLY READ THE MESSAGE THAT FOLLOWS AND BE ALERT TO THE POSSIBILITY OF DEATH OR SERIOUS INJURY.

ATTENTION: To avoid injury, always observe the Safety Notices, CAUTION and ATTENTION, contained in this section and throughout the manual.

Place a "Do not start the machine" warning notice on the starter switch key before all maintenance or repair operations.

**CAUTION**

M489 - Read the operators manual to familiarize yourself with the correct control functions.

**CAUTION**

M490 - Operate the machine and equipment controls from the seat position only. Any other method could result in serious injury.

**CAUTION**

M265A - A frequent cause of personal injury or death is persons falling off and being run over. Do not permit anyone to ride on the machine.

**CAUTION**

SB055 - Before starting engine, study operators manual safety messages. Read all safety signs on machine. Clear the area of other persons. Learn and practice safe use of controls before operation. It is your responsibility to understand and follow manufacturers instructions on machine operation, service, and to observe pertinent laws and regulation. Operators and service manuals can be obtained from your dealer.

ATTENTION: You risk injury if you wear loose clothing or if you do not use safety equipment for your work. Always wear clothes which are unlikely to become caught in the machinery. Other safety equipment may be required, in particular: hard hat, safety boots, ear protectors, safety goggles or mask, thick gloves and reflective clothing.

**CAUTION**

M124A - Rotating machine parts, stay clear, keep shields installed to help protect from clothing entanglement and injury. Wear close-fitted clothing.

**CAUTION**

SB071 - Rotating fan and belts: Contact will cause injury. Keep clear.

ATTENTION: Follow the procedures exactly when carrying out checks or inspections on the vehicle's hydraulic systems. DO NOT CHANGE the procedures.

ATTENTION: Before running the hydraulic cylinders in this vehicle through the cycles necessary for checking their functioning or for draining a circuit, warn people nearby to move away.

**CAUTION**

SM121A - Always wear heat protective gloves to prevent burning your hands when handling heated parts.

**CAUTION**

M132B - Lower or block elevated implements and other attachments before servicing or when leaving the equipment.

**CAUTION**

R149C - Hydraulic oil or diesel fuel leaking under pressure can penetrate the skin and cause infection or other injury. To Prevent Personal Injury: Relieve all pressure, before disconnecting fluid lines or performing work on the hydraulic system. Before applying pressure, make sure all connections are tight and components are in good condition. Never use your hand to check for suspected leaks under pressure. Use a piece of cardboard or wood for this purpose. If injured by leaking fluid, see your doctor immediately.

ATTENTION: *To remove a hardened pin, such as a pivot pin, or a hardened shaft, use a soft-headed hammer (brass or bronze) or a brass or bronze peg and a steel-headed hammer.*

**CAUTION**

M428 - Always wear safety glasses when using a drill, hammer, saw, or other tools that may cause chips to fly.

ATTENTION: *Use suitable servicing jacks or a chain hoist for raising the wheels or tracks. Always chock the vehicle in place with suitable safety supports.*

ATTENTION: *When carrying out maintenance or repair operations on the vehicle, keep the workshop floor, the driving position and the steps free from oil, water, grease, tools, etc... Use an oil absorbent material and/or workshop cloths as necessary. Always use sound methods.*

ATTENTION: *Some parts of this vehicle are very heavy. Use lifting devices or additional assistance recommended in the Operator's Manual.*

**CAUTION**

M532 - Do not operate the engine in a closed building. Proper ventilation is required under all circumstances.

**CAUTION**

M503 - When the battery electrolyte is frozen, the battery can explode if (1), you try to charge the battery, or (2), you try to jump start and run the engine. To prevent the battery electrolyte from freezing, try to keep the battery at full charge. If you do not follow these instructions, you or others in the area can be injured.

**CAUTION**

M244A - BATTERIES CONTAIN ACID AND EXPLOSIVE GAS. EXPLOSION CAN RESULT FROM SPARKS, FLAMES, OR WRONG CABLE CONNECTIONS. TO CONNECT JUMPER CABLES OR CHARGER, SEE MANUAL(S) FOR THE CORRECT PROCEDURE. FAILURE TO FOLLOW THE ABOVE INSTRUCTIONS CAN CAUSE SERIOUS PERSONAL INJURY OR DEATH.

Basic instructions (- A.90.A.05)

CX135SR

GENERAL

Cleaning

Clean all metal parts except the bearings with white spirit or steam. Do not use caustic soda for steam cleaning. After each cleaning, dry and oil all parts. Clean the oil ducts with compressed air. Clean the bearings with paraffin, then dry them completely and lubricate them.

Inspection

Check all the parts when they are disassembled. Replace all parts that show signs of wear or damage. Superficial scratches and grooves can be removed with an oil stone or with a cloth dipped in red oxide. A complete visual inspection is necessary to detect wear and pitting, and replacing parts as soon as it becomes necessary will help to avoid premature breakdowns.

Bearings

Check that the bearings turn freely. Replace them if their adjustment is too free or if their functioning is irregular. Wash the bearings with a good solvent or paraffin and allow them to air dry.
DO NOT DRY THE BEARINGS WITH COMPRESSED AIR.

Needle bearings

Before pushing needle bearings into a cylinder bore, always remove all metallic projections from the bore and its edges. Before pushing in bearings with a press, coat the inside and edges of the bearings with Vaseline.

Gears

Check all the gears and ensure that they do not show any signs of wear or damage. Replace the worn out or damaged gears.

Gaskets, O-rings and flat seals

Always install new gaskets, O-rings, and flat seals. Coat the gaskets and O-rings with Vaseline.

Shaft

Check all shafts showing wear or damage. Ensure that the surface of a shaft carrying a bearing or gasket is not damaged.

Spare parts

Always use CASE spare parts. To order these, refer to the Spare Parts Catalogue and indicate the correct reference number of the CASE spare parts.
Breakdowns caused by the use of parts other than CASE spare parts are not covered by the warranty.

Lubrication

Use only the oils and lubricants specified in the Operator's Manual or the Service Manual.
Breakdowns caused by the use of oils and lubricants not specifically listed are not covered by the warranty.

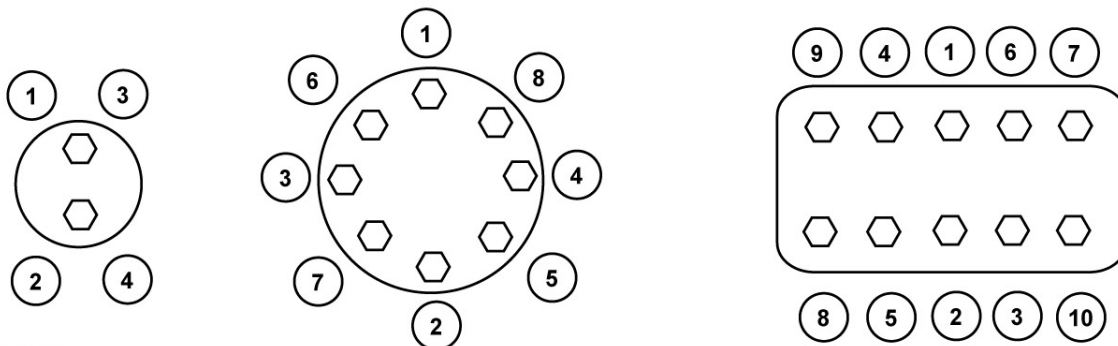
Torque (- A.90.A.10)

CX135SR

STANDARD TIGHTENING TORQUE

Order of tightening nuts and cap screws.

Tighten alternately so that torque remains uniform. Cap screws which are fitted with Loctite (look for traces of a white residue on the thread after removal), must be cleaned with a thin oil or a suitable solvent, then dried. Add two or three drops of Loctite to the cap screw thread, then fit the screw.



CRIL03H012E01

CRIL03H012E01 1

The numbers in the diagrams represent the order of tightening.

Tightening torque

Where there are no special instructions, tighten cap nuts screws to the torques given in the table below.

Standard torque setting table.

Designation of cap screws (dimensions)		M6	M8	M10	M12	M14	M16	M18	M20
Cap screw	Spanner in mm	10	13	17	19	22	24	27	30
	Torque setting in Nm	6.9	19.6	39.2	58.8	98.1	157.2	196	274
Socket head screw	Wrench in mm	5	6	8	10	12	14	14	17
	Torque setting in Nm	8.8	21.6	42.1	78.4	117.6	176.4	245	343

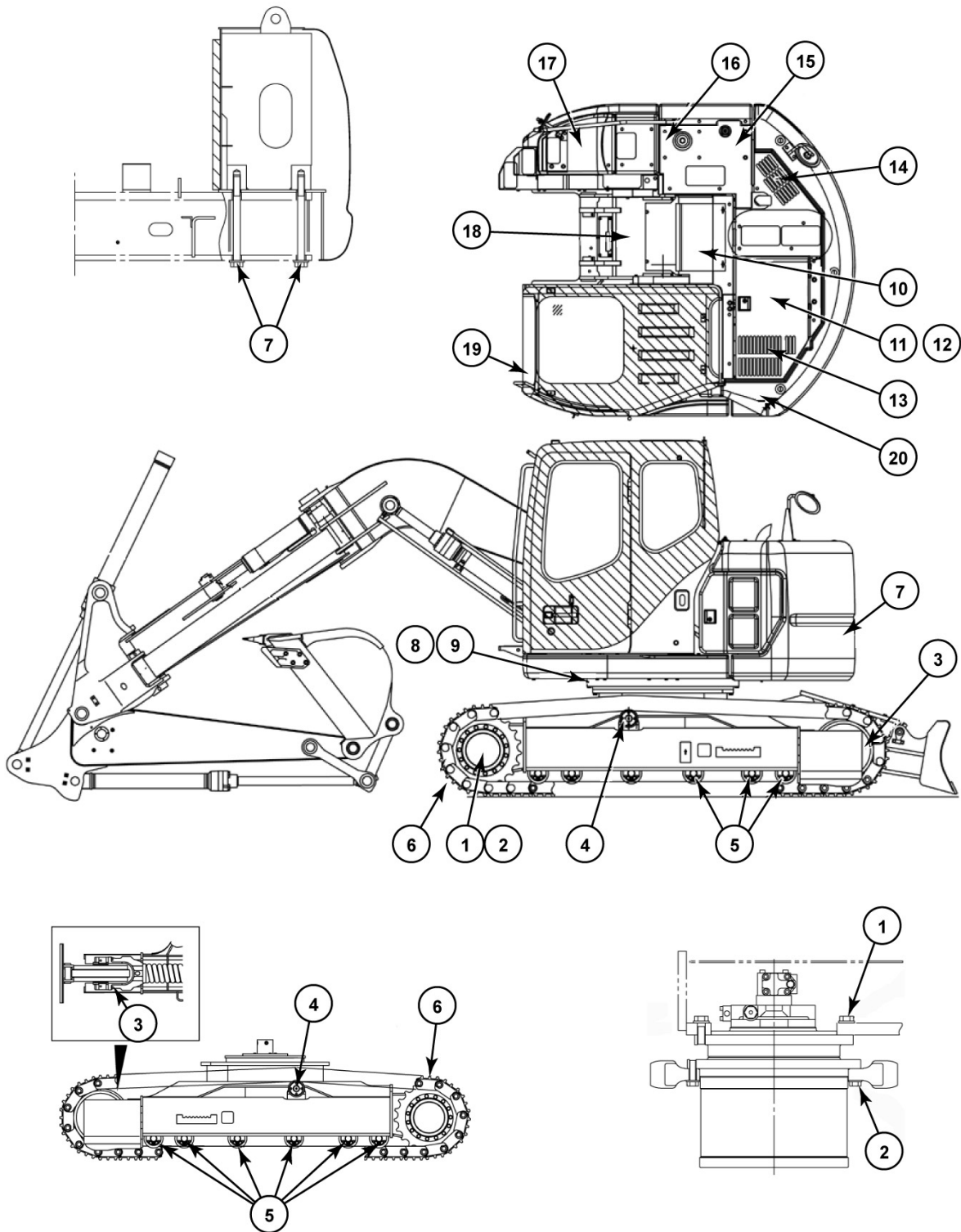
Torque (- A.90.A.10)

CX135SR

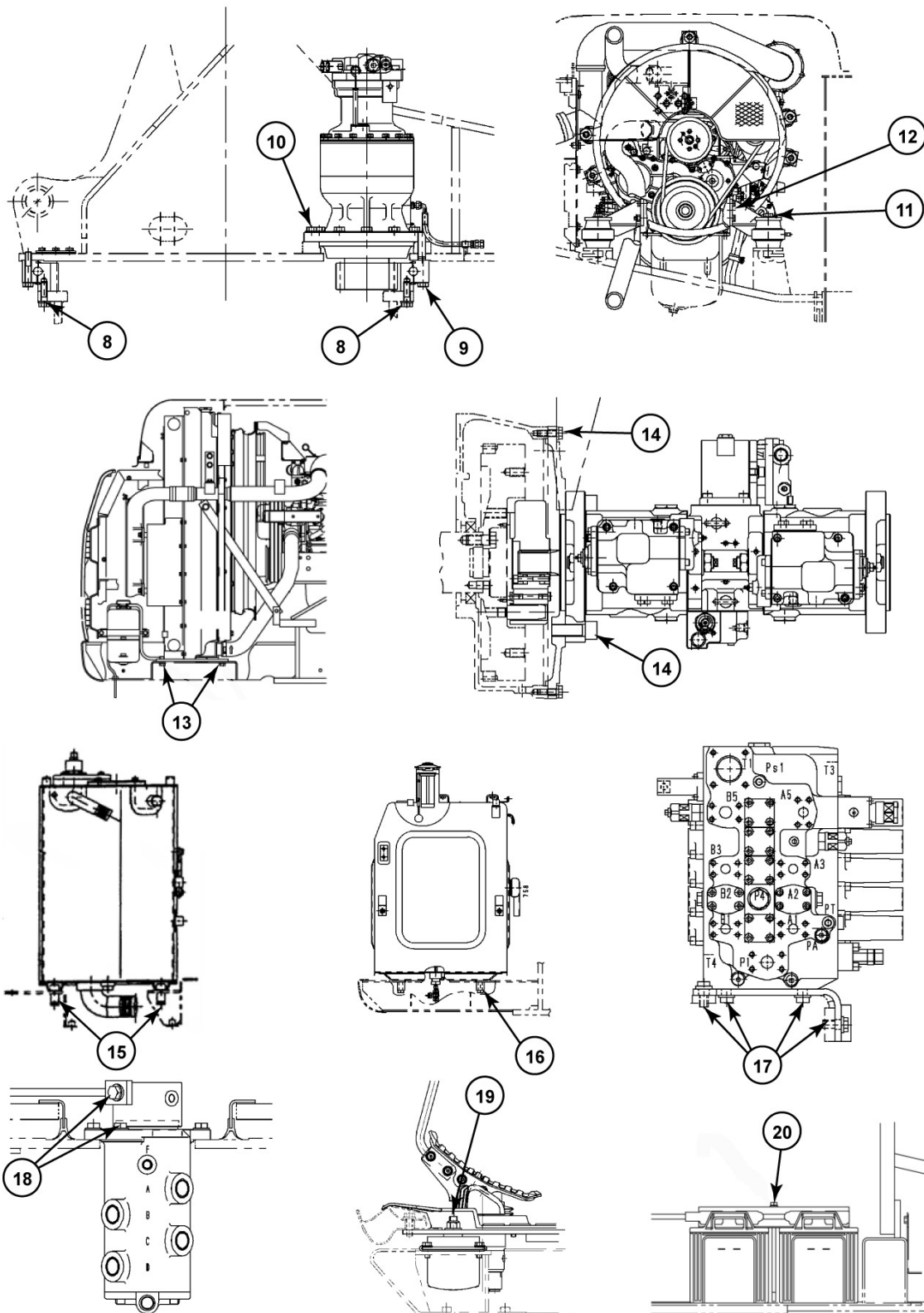
SPECIAL TORQUE SETTINGS

No.	Component	Screw diameter	Wrench in mm	Tightening torque
(1)*	Travel motor and reduction gear assembly	M16	24	267 - 312 Nm
(2)*	Sprocket	M16	24	267 - 312 Nm
(3)*	Idler wheel	M16	24	267 - 312 Nm
(4)*	Upper roller	M16	24	267 - 312 Nm
(5)*	Lower roller	M16	24	267 - 312 Nm
(6)	Shoe	M16	24	267 - 312 Nm
(7)	Counterweight	M30	46	1060 - 1235 Nm
(8)	Turntable (chassis)	M16	24	267 - 312 Nm
(9)	Turntable (upperstructure)	M16	24	267 - 312 Nm
(10)*	Swing motor and reduction gear assembly	M16	24	267 - 312 Nm
(11)*	Engine	M16	24	265 - 313 Nm
(12)*	Engine mounts	M10	17	64 - 74 Nm
(13)	Radiator	M12	19	88 - 111 Nm
(14)*	Hydraulic pump	M10	17	64 - 74 Nm
		M12	Hex	88 - 111 Nm
(15)*	Hydraulic reservoir	M16	24	232 - 276 Nm
(16)*	Fuel tank	M16	24	232 - 276 Nm
(17)*	Control valve	M16	24	267 - 312 Nm
(18)*	Hydraulic swivel	M12	19	109 - 127 Nm
(19)	Cab	M16	24	78 - 80 Nm
(20)	Batteries	M10	17	20 - 29 Nm

Use Loctite 262 or an equivalent on mounting screws for those components marked with an asterisk (*).



CRIL03L001H01 1

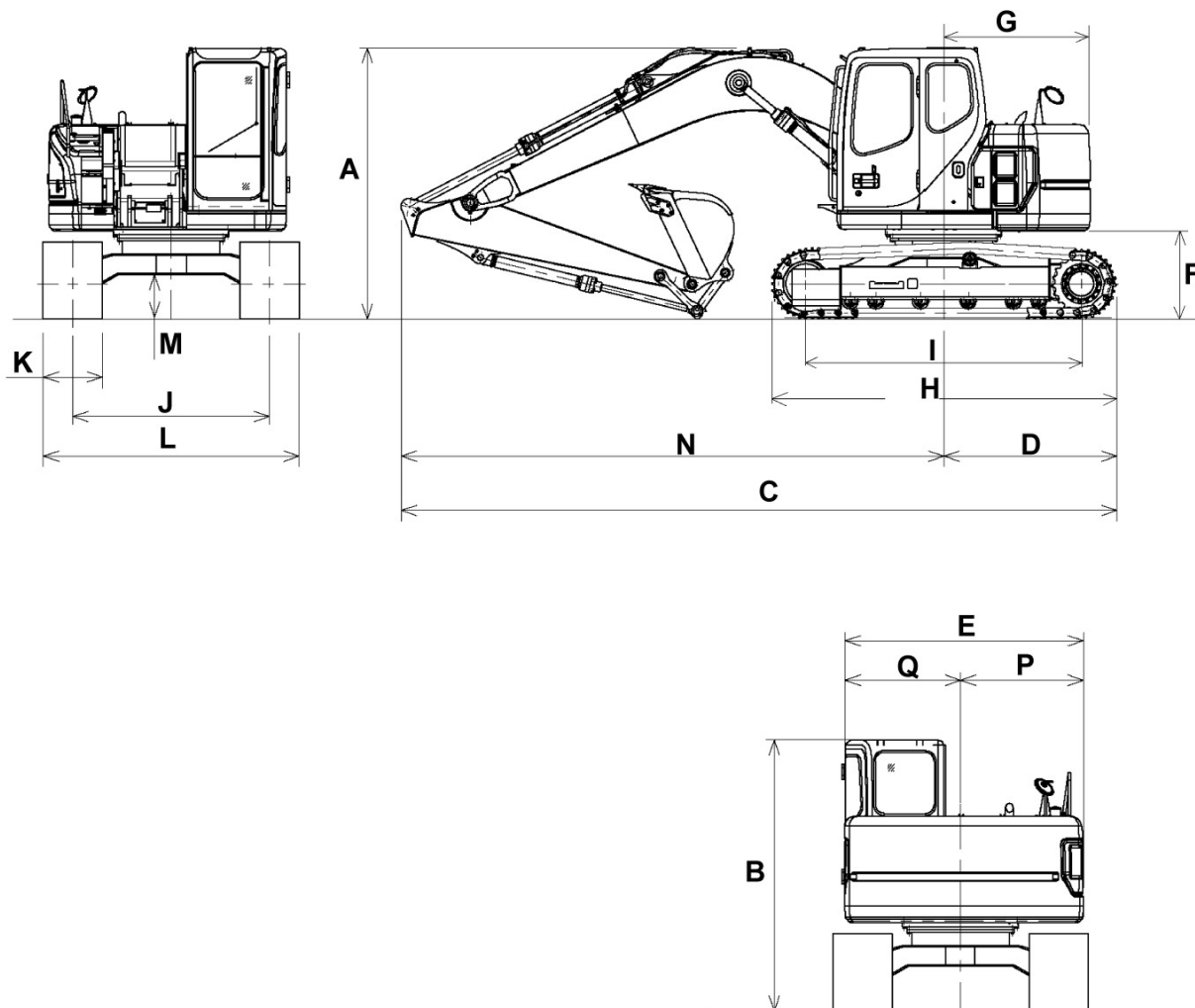


CRIL03L002H01 2

Dimension (- A.92.A.30)

CX135SR

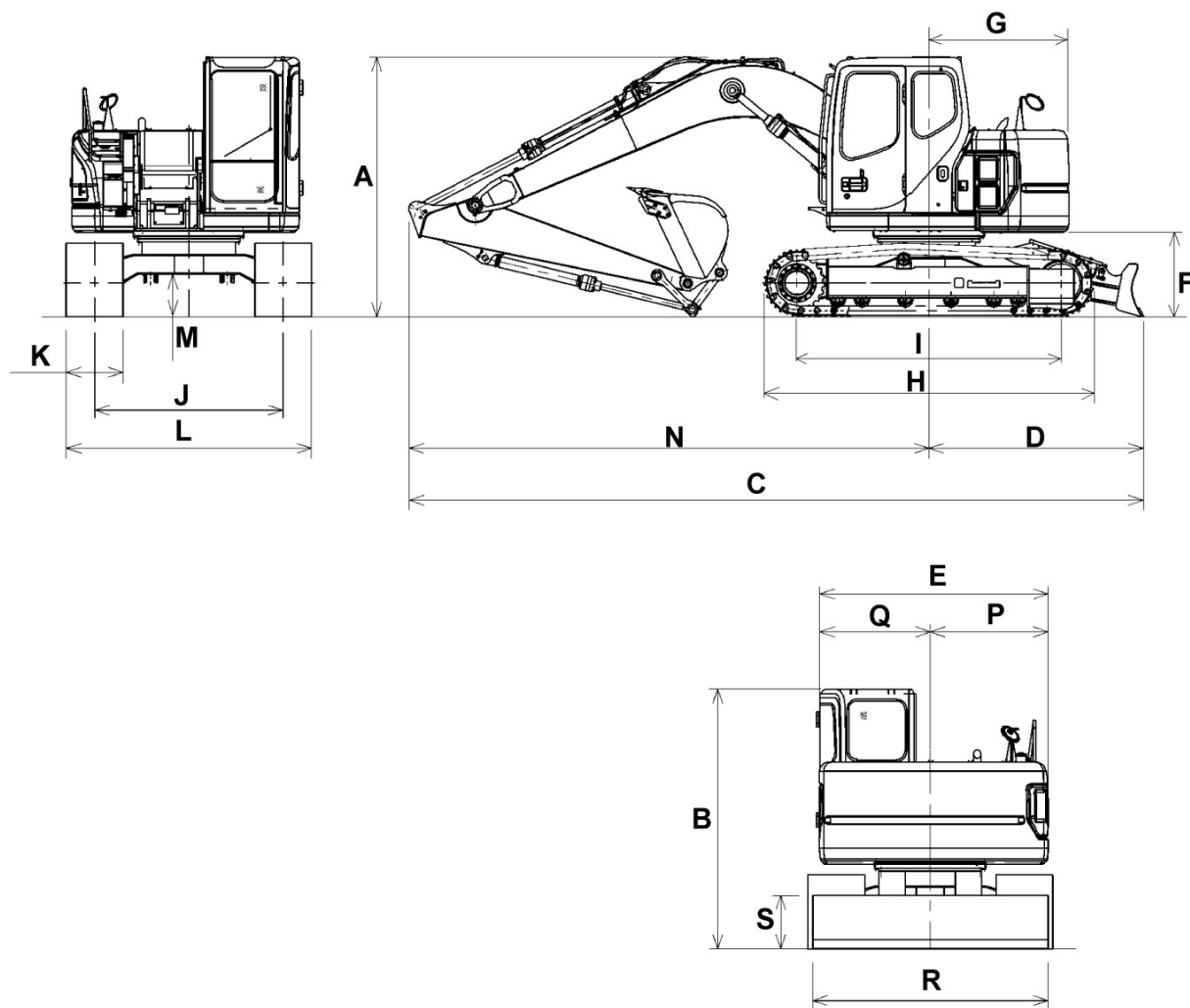
Machine fitted with monoblock boom



CRIL03L003G01 1

Item	Dippers		Item	Dippers		Item	Dippers	
	2.39 m	2.85 m		2.39 m	2.85 m		2.39 m	2.85 m
(A)	2.75 m	2.60 m	(B)	2.75 m		(C)	7.24 m	7.23 m
(D)	1.75 m		(E)	2.41 m		(F)	0.88 m	
(G)	1.48 m		(H)	3.51 m		(I)	2.78 m	
(J)	1.99 m		(K)	0.60 m		(L)	2.59 m	
(M)	0.43 m		(N)	5.49 m	5.46 m	(P)	1.24 m	
(Q)	1.17 m							

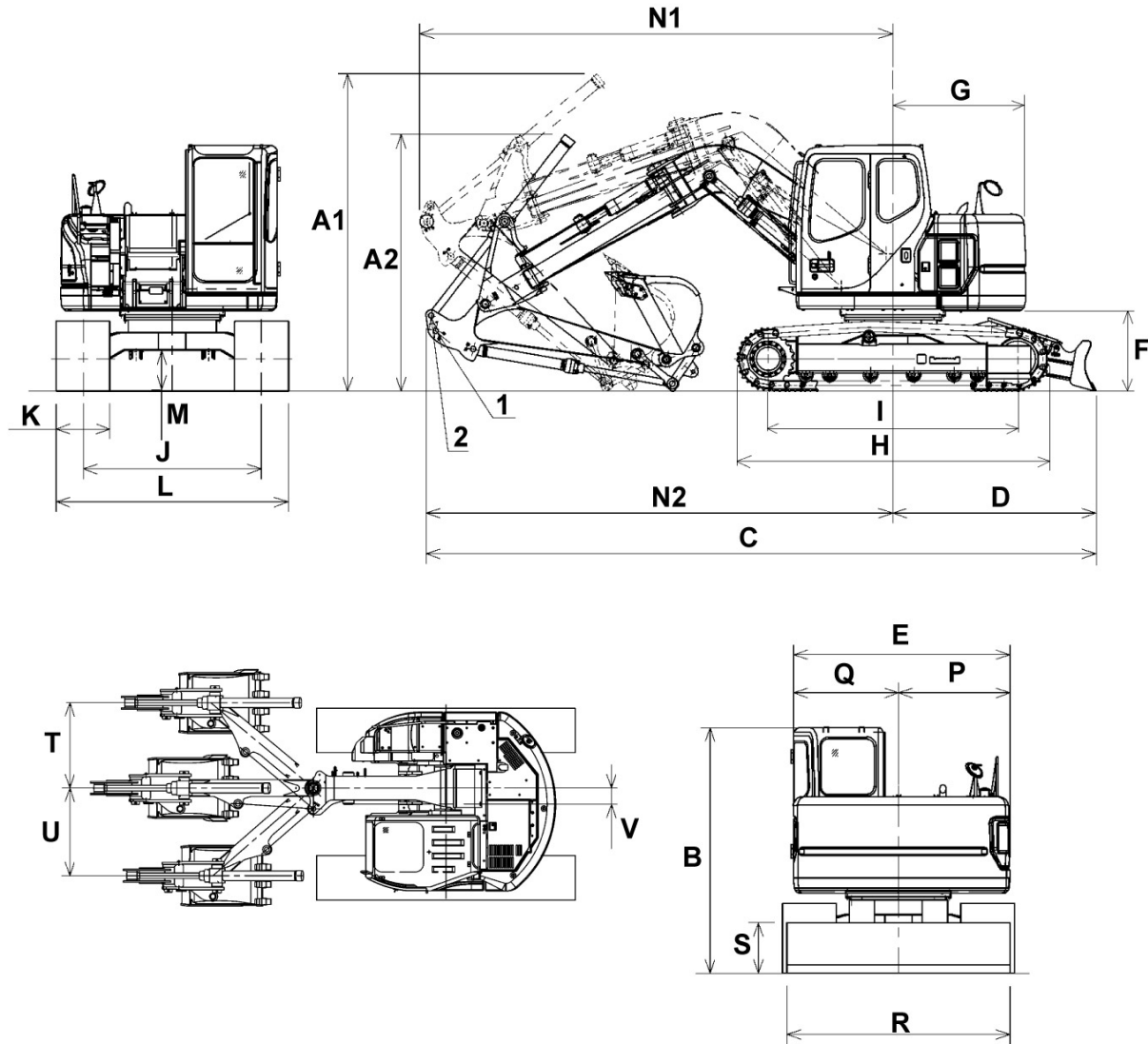
Machine fitted with monoblock boom and dozer blade



CRIL03L004G01 2

Item	Dippers		Item	Dippers		Item	Dippers	
	2.39 m	2.85 m		2.39 m	2.85 m		2.39 m	2.85 m
(A)	2.75 m	2.60 m	(B)	2.75 m		(C)	7.75 m	7.72 m
(D)	2.26 m		(E)	2.41 m		(F)	0.88 m	
(G)	1.48 m		(H)	3.51 m		(I)	2.78 m	
(J)	1.99 m		(K)	0.60 m		(L)	2.59 m	
(M)	0.43 m		(N)	5.49 m	5.46 m	(P)	1.24 m	
(Q)	1.17 m		(R)	2.49 m		(S)	0.57 m	

Machine fitted with backhoe-offset boom and dozer blade



CRIL03L005G01 3

Dippers 2.11 m							
(A1)	3.54 m	(A2)	2.87 m	(B)	2.75 m	(C)	7.47 m
(D)	2.26 m	(E)	2.41 m	(F)	0.88 m	(G)	1.48 m
(H)	3.51 m	(I)	2.78 m	(J)	1.99 m	(K)	0.60 m
(L)	2.59 m	(M)	0.43 m	(N1)	5.27 m	(N2)	5.20 m
(P)	1.24 m	(Q)	1.17 m	(R)	2.49 m	(S)	0.57 m
(T)	1.15 m	(U)	1.18 m	(V)	0.21 m		

Weight (- A.92.A.40)

CX135SR

Weight of machine

Configuration	Weight	Ground pressure
With 600 mm track pads, monobloc boom, 2.40 m dipper, 380 kg backhoe bucket, operator and full fuel tank	13200 kg	0.36 bar
With 600 mm track pads, monobloc boom, 2.40 m dipper, 380 kg backhoe bucket, operator and full fuel tank	14 100 kg	0.38 bar
With 600 mm track pads, backhoe-offset boom, 2.10 m dipper, 380 kg backhoe bucket, dozer blade, operator and full fuel tank	14 200 kg	0.38 bar

Weight of components

Components	Mono boom	Mono boom dozer blade	Offset backhoe boom dozer blade
Engine	363 kg		
Hydraulic pump	91 kg	94 kg	
Attachment control valve	140 kg	180 kg	
Swing motor and reduction gear assembly	103 kg		
Travel motor and reduction gear assembly	144 kg		
Boom cylinder	121 kg		
Dipper cylinder	157 kg		
Bucket cylinder	93 kg		
Dozer blade cylinder		50 kg	
Offset backhoe boom cylinder			71 kg
Counterweight	3330 kg	2770 kg	2780 kg
Cab	kg		
Turntable	177 kg		
Upperstructure assembly	8990 kg	8490 kg	9150 kg
Hydraulic swivel	26 kg	56 kg	
Undercarriage assembly	4170 kg	4970 kg	
Machine without attachment	11040 kg	11340 kg	11350 kg
Attachment	2140 kg		2770 kg
Boom assembly	1210 kg		1900 kg
Dipper assembly	550 kg		520 kg
Dozer blade		680 kg	
Radiator and oil-cooler assembly	55 kg		
Fuel tank	62 kg		
Hydraulic reservoir	88 kg		
Idler wheel	61 kg		
Upper roller	16 kg		
Lower roller	20 kg		
Tension shock absorber	77 kg		
Track 500 mm	711 kg		
Track 600 mm	793 kg		
Track 700 mm	943 kg		

Consumables (- A.92.A.55)

CX135SR

FLUIDS AND LUBRICANTS

Lubricants must have the correct properties for each application.

ATTENTION: *You must respect the operating conditions for the different ingredients.*

Hydraulic fluid

CASE AKCELA hydraulic fluid is specially designed for high pressure applications and for the CASE hydraulic system.

The type of fluid to be used depends on the ambient temperature.

- TEMPERATE COUNTRIES - **20 °C to + 40 °C**
CASE AKCELA HYDRAULIC EXCAVATOR FLUID
(MS 1230. ISO VG 46. DIN 51524 PART 2 HV)
- HOT COUNTRIES **0 °C to + 60 °C**
CASE AKCELA HYDRAULIC EXCAVATOR FLUID "HOT CLIMATE"
(MS 1230. ISO VG 100. DIN 51524 PART 2 HV)
- COLD COUNTRIES - **40 °C to + 20 °C**
CASE AKCELA HYDRAULIC EXCAVATOR FLUID "COLD CLIMATE"
(MS 1230. ISO VG 22. DIN 51524 PART 2 HV)
- BIODEGRADABLE FLUID - **30 - +40 °C**
This yellow fluid can be mixed with standard fluid.
If this liquid is used, it is advisable to completely drain the hydraulic circuit .
CASE AKCELA HYDRAULIC EXCAVATORS FLUID BIO
(MS 1230. ISO VG 46. DIN 51524 PART 2 HV)

Transmission component oil

Extreme pressure oil used in transmission components inside sealed housings.

CASE AKCELA 135H EP GEAR LUBE SAE 80W-90
(SAE 80W-90. API GL 5. MIL-L-2105 D. MS 1316. ZF TE-ML 05A)

Grease

"Extreme Pressure" multi-purpose grease

- **CASE AKCELA MOLY GREASE 241H EP-M** (251H EP-M NLGI2)
with lithium and molybdenum bisulphide soap.
- **CASE AKCELA 251H EP MULTI-PURPOSE GREASE** (251H EP. NLGI 2)
with lithium and calcium soap.
- **CASE AKCELA PREMIUM GREASE EP-2** (NLGI 2)
with lithium soap.

HYDRAULIC HAMMERS

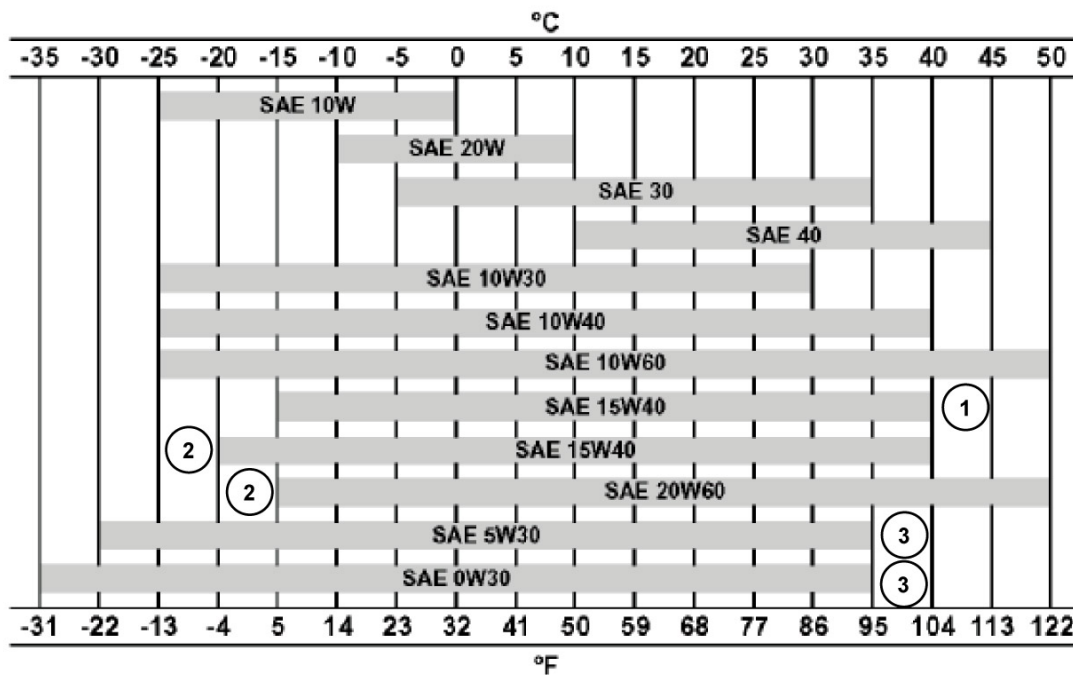
Use only **CASE AKCELA PREMIUM GREASE EP-2** (NLGI 2) grease with lithium soap.

Engine oil

CASE AKCELA NO. 1 ENGINE OIL is recommended for the engine.

This oil provides correct lubrication for your engine in all working conditions.

If **CASE AKCELA NO. 1 ENGINE OIL** Multigrade cannot be obtained, use oil corresponding to one of the following categories: ACEA E5. MS 1121. API CH-4.



CRIL03H015F01

CRIL03H015F01 1

OIL USE RANGE

1. Mineral-based
2. Semi-synthetic based
3. Synthetic based

Fuel

Use fuel that is compliant with ASTM (American Society for Testing and Materials) standard D975.

- Use Grade No 2 fuel. The use of other types of fuel can result in a loss of power and may cause high fuel consumption.
- When the temperature is very cold, the use of a mixture of No 1 and No 2 fuel is permitted. See your fuel vendor for winter fuel requirements in your area.
- If the temperature falls below the fuel cloud point (point at which wax begins to form) the wax crystals will cause power loss or will prevent the engine from starting.

IMPORTANT: In cold weather, fill the fuel tank at the end of the day's work to prevent condensation from forming.

FUEL STORAGE

Long storage can lead to the accumulation of impurities and condensation in the fuel tank. Engine trouble can often be traced to the presence of water in the fuel.

The storage tank must be placed outside and the temperature of the fuel should be kept as low as possible. Drain off water and impurities regularly.

Anti-freeze/Anti-corrosion

Use anti-freeze in all seasons to protect the cooling system from corrosion and all risk of freezing.

CASE AKCELA PREMIUM ANTI-FREEZE LRD -25°C

For environments with temperatures falling to - 25 °C, do not mix with water.

CASE AKCELA PREMIUM ANTI-FREEZE (MS 1710)

For environments with temperatures falling to - 38 °C, use with water in a proportion of 50/50.

IMPORTANT: Do not mix products of a different origin or a different make. The system must be topped up with the same product.