

CX225SR Excavator

Operator's Manual

Bur 6-34630na



CX225SR EXCAVATOR

OPERATOR'S MANUAL

Part Number: 6-34630na

CASE TECHNICAL MANUALS

Manuals are available from your Dealer for the operation, service, and repair of your machine. For prompt convenient service, contact your Dealer for assistance in obtaining the manuals for your machine.

Your Dealer can expedite your order for Operator's Manuals, Parts Catalogs, Service Manuals, and Maintenance records.

Always give the Machine Name, Model, and P.I.N. (Product Identification Number) or S.N. (Serial Number) of your machine so your Dealer can provide the correct manuals for your machine.

NOTE: *Case Corporation reserves the right to make improvements in design or changes in specifications at any time without incurring any obligation to install them on units previously sold.*



THIS SAFETY ALERT SYMBOL INDICATES IMPORTANT SAFETY MESSAGES IN THIS MANUAL. WHEN YOU SEE THIS SYMBOL, CAREFULLY READ THE MESSAGE THAT FOLLOWS AND BE ALERT TO THE POSSIBILITY OF DEATH OR SERIOUS INJURY

M171D

Safety Decals on this machine use the words **Danger, Warning, or Caution**, which are defined as follows:

DANGER: Indicates an immediate hazardous situation that, if not avoided, will result in death or serious injury. The color associated with Danger is RED.

WARNING: Indicates a potentially hazardous situation that, if not avoided, could result in death or serious injury. The color associated with Warning is ORANGE.

CAUTION: Indicates a potentially hazardous situation which, if not avoided, may result in minor or moderate injury. It may also be used to alert against unsafe practices. The color associated with Caution is YELLOW.

If Safety Decals on this machine are ISO two panel Pictorial, decals are defined as follows:

The first panel indicates the nature of the hazard.

The second panel indicates the appropriate avoidance of the hazard.

Background color is YELLOW

Prohibition symbols such as   and  if used, are RED.



WARNING

IMPROPER OPERATION OF THIS MACHINE CAN CAUSE DEATH OR SERIOUS INJURY. BEFORE USING THIS MACHINE, MAKE CERTAIN THAT EVERY OPERATOR:

Is instructed in safe and proper use of the machine.

Reads and understands the Manual(s) pertaining to the machine.

Reads and understands ALL Safety Decals on the machine.

Clears the area of other persons.

Learns and practices safe use of machine controls in a safe, clear area before operating this machine on a job site.

It is your responsibility to observe pertinent laws and regulations and follow Case Corporation instructions on machine operation and maintenance.

WARNING_01_NA

CALIFORNIA

PROPOSITION 65 WARNING

Diesel engine exhaust and some of its constituents are known to the State of California to cause cancer, birth defects, and other reproductive harm.

Battery post, terminals and related accessories contain lead and lead compounds.
Wash hands after handling.

TABLE OF CONTENTS

CHAPTER 1

GENERAL INFORMATION

To The Owner	1-1
Machine Components	1-3
Identification Numbers	1-5

CHAPTER 2

SAFETY, DECALS, AND HAND SIGNALS

Table of Contents	2-1
Safety Rules	2-3
Personal Safety	2-4
Safety Area	2-4
Utility Safety	2-4
Operator Precautions	2-5
Decals	2-10
Hand Signals	2-15

CHAPTER 3

INSTRUMENTS AND CONTROLS

Table of Contents	3-1
Cab Door	3-3
Steps and Access Handles	3-4
Position of the Operator's Compartment Controls and Accessories	3-5
Right-hand Control Arm	3-6
Instrument Panel	3-7
Left-hand Control Arm	3-9
Working Light Switch	3-10
Windshield Washer Switch	3-10
Windshield Wiper Switch	3-10
High Speed Travel Switch	3-10
Heating, ventilation and air-conditioning control	3-11
Function cancellation Lever	3-12
Arm and Upperstructure Swing Left-hand Control Lever	3-12
Boom and Bucket Right-hand Control Lever	3-13
Travel Control	3-14
Option Pedal	3-15
Unlocking and Locking of Pedals	3-15
Cab Light	3-15
Coat Hanger Hook	3-16
Rear Right-hand Side Window	3-16
storage Compartment	3-17
Storage Tray	3-17
Ashtray	3-17
Cab Radio Compartment	3-17
Speaker Compartments	3-17
Fuse Box	3-17
Operator's Seat	3-18
Windshield	3-21
Lower Front Window	3-22
Window-Breaker Hammer	3-22
Air Vents	3-22

Rear View Mirrors	3-23
Fuel Tank	3-24
Upper Hood	3-24
Engine Hood	3-25
Windshield Washer Reservoir	3-25
Side Doors	3-26
Lower panels	3-26
Towing Point	3-26
Load Handling Eyes	3-27
Tool Supply Valves (Optional)	3-28
Optional tool flow selector valve	3-28

CHAPTER 4

OPERATING INSTRUCTIONS

Table of Contents	4-1
Before Operating the Machine	4-3
Operating the Machine	4-3
Run-in Period	4-4
Hydraulic Fluid Warm-up	4-4
Starting the engine	4-5
Bringing the Machine up to Operating Temperature	4-6
Engine Operation	4-7
Stopping the Engine	4-7
Operating the Machine in Cold Weather	4-8
Operating the Machine in Hot Weather	4-9
Basic operation	4-9
Machine Travel	4-10
Transporting the Machine	4-12
Handling the Machine	4-15
Operating the Machine In Water	4-15
Parking the Machine	4-15
Operating the Machine on Sloping Ground	4-16
Towing the Machine	4-16
Operating the Bucket	4-17
Lowering the attachment in the event of a machine failure	4-18
Auxiliary hydraulic circuits	4-19
Machine storage	4-21

CHAPTER 5

LUBRICATION, FILTERS, AND FLUIDS

Table of Contents	5-1
Servicing Instructions	5-3
Daily Inspections	5-3
Hourmeter	5-4
Lubrication chart	5-5
Fluids and Lubricants	5-6
Fluid and Lubricant Capacities and Specifications	5-8
Lubrication Points	5-9
Fluid Levels	5-13
Engine	5-14
Cooling System	5-16
Fuel System	5-18
Releasing Pressure in the Hydraulic System	5-21
Hydraulic System	5-22
Air Filter	5-30
Swing Reduction Gear	5-33
Travel Reduction Gears	5-34

CHAPTER 6

MAINTENANCE AND ADJUSTMENTS

Table of Contents	6-1
Tracks	6-3
Track Rollers and Idler Wheels	6-6
Radiator and Oil Cooler	6-7
Fan and Alternator Drive Belt	6-8
Fuel Tank Filter	6-9
Inspecting and Cleaning the Machine	6-9
adjusting rocker arm clearance	6-9
Checking for Cylinder Leakage	6-9
Replacing a Bucket	6-10
Fire Extinguisher (Not Supplied)	6-11
Welding on the Machine	6-11
Plastic and Resin Parts	6-11
Air conditioning	6-12
Hardware torque inspection	6-14

CHAPTER 7

ELECTRICAL

Table of Contents	7-1
Fuses	7-3
Battery	7-5
Connecting One Or Two Booster Batteries	7-7
Alternator	7-7
Starter Motor	7-7
Replacing a Bulb	7-8
Adjusting The Working Lights	7-9

CHAPTER 8

SPECIFICATIONS

Table of Contents	8-1
Engine	8-3
Electrical Systems	8-3
Hydraulic System	8-3
Capacity of Systems and Components	8-4
Weights	8-4
Ground Pressure	8-4
Attachment	8-4
Arms	8-4
Esco Buckets	8-5
Machine Overall Dimensions	8-6
Working Range	8-8

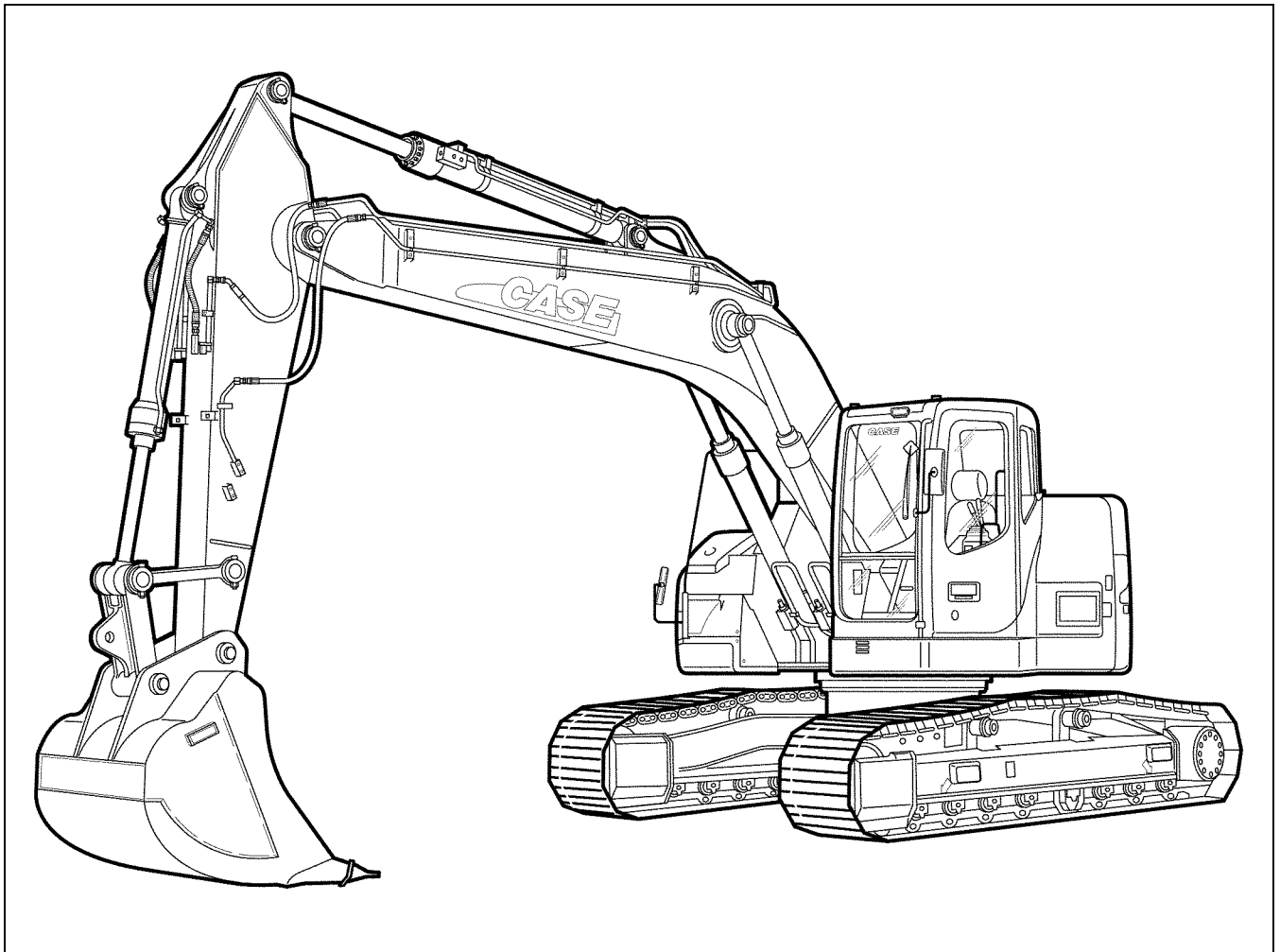
CHAPTER 9

INDEX

Chapter 1

GENERAL INFORMATION

TO THE OWNER



CT02E021

Figure 1

HYDRAULIC CRAWLER EXCAVATORS SERIES CX225SR

Your machine has been designed and built to the highest standards of quality. It conforms to all current safety regulations. See Official documents. However, the risk of accidents can never be completely excluded. That is why it is essential to observe elementary safety rules and precautions.

Read this manual carefully, paying particular attention to the instructions concerning safety, operation and maintenance so as to avoid the risk of injury while operating or servicing the machine.

The standard attachments and tools of this machine are designed to carry out all kinds of earthmoving and rehandling operations. If you want to use this machine to handle a load (pipes, culverts, formwork, etc.), make sure that it is designed to carry out this kind of work. For this type of application, the machine must be equipped with safety valves, an overload indicator, a load handling chart corresponding to the type of machine and its attachment and a load fixing point. All legal requirements must also be strictly observed.

Do not use this machine for any application or purpose other than those described in this manual. If the machine is to be used for work involving the use of special attachments, accessories or equipment, consult your CASE Dealer in order to make sure that any adaptations or modifications made are in keeping with the machine's technical specifications and with prevailing safety requirements.

Any modification or adaptation which is not approved by the manufacturer may invalidate the machine's initial conformity with safety requirements.

The machine must undergo regular inspections, the frequency of which varies according to the type of use. Consult your CASE Dealer.

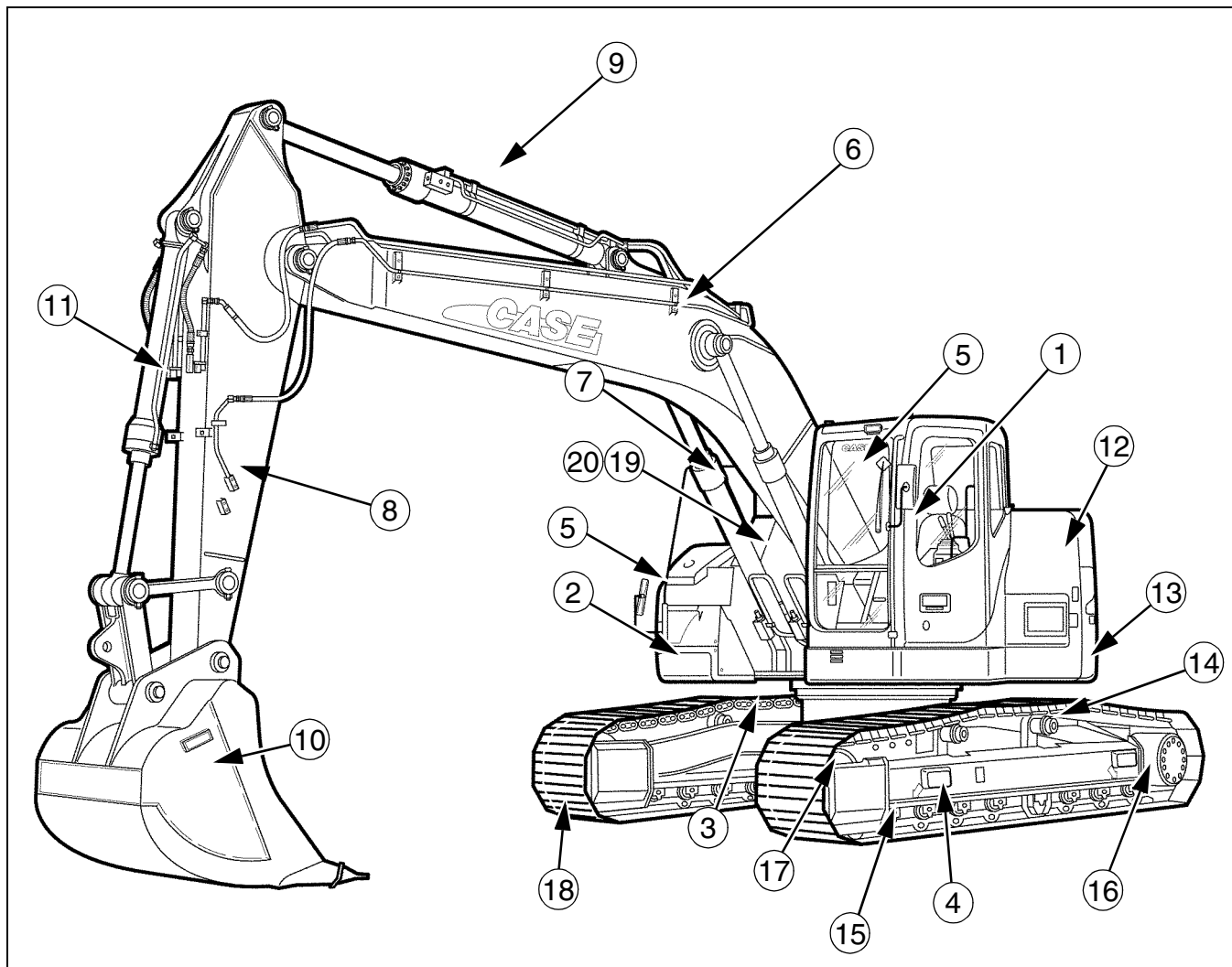
Before permitting a new operator on this machine, make sure:

1. That the operator has received the necessary training on how to operate the machine correctly and safely.
2. That the operator has read and understood the instructions given in this manual.

Always keep this manual in the operator's compartment (in the seat back, behind the operator's seat). Make sure it is always complete and in good condition. If you wish to obtain extra copies, or copies in languages other than that of the country of use, consult your CASE Dealer.

Your CASE Dealer is at your disposal for any further information. He will also provide any after-sales service you may require, and genuine CASE spare parts, your guarantee of quality and match.

MACHINE COMPONENTS



CT02E021

Figure 2

- | | | |
|-------------------------------|-----------------------------|-------------------------|
| 1. CAB/OPERATOR'S COMPARTMENT | 9. ARM CYLINDER | 17. IDLER WHEELS |
| 2. UPPERSTRUCTURE | 10. BACKHOE BUCKET | 18. TRACKS |
| 3. UNDERCARRIAGE | 11. BACKHOE BUCKET CYLINDER | 19. HYDRAULIC RESERVOIR |
| 4. STEPS | 12. ENGINE COMPARTMENT | 20. FUEL TANK |
| 5. ACCESS HANDLES | 13. COUNTERWEIGHT | |
| 6. BOOM | 14. UPPER ROLLERS | |
| 7. BOOM CYLINDERS | 15. LOWER ROLLERS | |
| 8. ARM | 16. TRAVEL REDUCTION GEARS | |

MAIN COMPONENTS

The CX225SR is a fully hydraulic machine. It consists of an undercarriage fitted with tracks and a turntable bearing which supports the upperstructure frame. The upperstructure frame supports the attachment, at the front end of the machine, plus the engine, hydraulics and cab. When the operator works the controls, the engine-driven pump delivers hydraulic fluid to the control valves. The control valves distribute the hydraulic fluid to the various cylinders and motors concerned. A cooling system maintains the hydraulic fluid at normal operating temperature.