

**9045B  
EXCAVATOR**

**Operator's Manual**

**Bur 6-1250NA**

Reprinted





*This safety alert symbol indicates important safety messages in this manual. When you see this symbol, carefully read the message that follows and be alert to the possibility of personal injury or death.*

M171B

Safety Decals on this machine use the words, **Danger**, **Warning** or **Caution**, which are defined as follows:

- **DANGER:** Indicates an immediate hazardous situation which, if not avoided, will result in death or serious injury. The color associated with Danger is RED.
- **WARNING:** Indicates a potentially hazardous situation which, if not avoided will result in serious injury. The color associated with Warning is ORANGE.
- **CAUTION:** Indicates a potentially hazardous situation which, if not avoided, can result in injury. It can also be used to alert against unsafe practices. The color associated with Caution is YELLOW.



# WARNING

IMPROPER OPERATION OF THIS MACHINE CAN CAUSE INJURY OR DEATH.  
BEFORE USING THIS MACHINE, MAKE CERTAIN THAT EVERY OPERATOR:

- Is instructed in safe and proper use of the machine.
- Reads and understands the Manual(s) pertaining to the machine.
- Reads and understands ALL Safety Decals on the machine.
- Clears the area of other persons.
- Learns and practices safe use of machine controls in a safe, clear area before operating on a job site.

It is your responsibility to observe pertinent laws and regulations and follow Case Corporation instructions on machine operation and maintenance.

## TABLE OF CONTENTS

TO THE OWNER .....	1
RIGHT, LEFT, FRONT AND REAR SIDES OF THE MACHINE .....	3
IDENTIFICATION NUMBERS .....	3
MACHINE COMPONENTS .....	4, 5, 6
SAFETY / DECALS / HAND SIGNALS .....	7
MACHINE SAFETY FEATURES .....	7, 8, 9
SAFETY MESSAGE .....	10
BEFORE OPERATION .....	11
MACHINE OPERATION .....	13
PARKING THE MACHINE .....	15
BURN PREVENTION .....	15
FIRE OR EXPLOSION PREVENTION .....	16
MAINTENANCE .....	17
SAFETY DECALS .....	19
HAND SIGNALS .....	28, 29, 30, 31, 32
INSTRUMENTS AND CONTROLS .....	33
LOCATION OF COMPONENTS (Operator's Cab) .....	33
HAND AND FOOT CONTROLS .....	34
STANDARD CONTROLS (Control Pattern D When Quick Change Kit Is Installed) .....	35
OPTIONAL CONTROLS (Control Pattern C When Quick Change Kit Is Installed) .....	36
RIGHT FRONT CONTROL PANEL .....	38,40
LEFT FRONT CONTROL PANEL .....	42
SYSTEMS DISPLAY PANEL .....	44, 47, 48
RIGHT REAR CONTROL PANEL .....	50
LEFT REAR CONTROL PANEL .....	51
OPERATION OF HEATING AND AIR CONDITIONING (If Equipped) .....	52
AM / FM RADIO .....	54
OPERATOR'S SEAT .....	55
SEAT BELT .....	56
CAB WINDOW AND DOOR CONTROLS .....	57
ANTI-VANDAL GUARD .....	60

## TABLE OF CONTENTS

---

OPERATING INSTRUCTIONS .....	61
RUN-IN PERIOD OF A NEW MACHINE .....	61
ENGINE OPERATION .....	62
ENGINE STARTING AIDS .....	66
ETHER COLD START AID .....	67
BOOSTER BATTERY CONNECTION TO MACHINE BATTERY .....	68
MACHINE OPERATION .....	70
DRIVING THE MACHINE .....	71
AUXILIARY ATTACHMENT OPERATION .....	77
AUXILIARY HYDRAULIC SYSTEMS .....	78
LIFTING LOADS WITH THE MACHINE .....	85
TRANSPORTING THE MACHINE ON A TRAILER .....	86
DISABLED MACHINE .....	86
MACHINE LIFTING EYES .....	88
OPERATING IN HOT WEATHER .....	89
OPERATING IN COLD WEATHER .....	90
LUBRICATION / FILTERS / FLUIDS .....	91
GENERAL SAFETY BEFORE YOU SERVICE .....	91
ENVIRONMENT .....	91
LUBRICATION CHART .....	92
PLASTIC AND RESIN PARTS .....	94
ENGINE HOURMETER .....	94
FLUIDS AND LUBRICANTS .....	95
ENGINE OIL RECOMMENDATIONS .....	96
HYDRAULIC FLUID CHART .....	97
SYSTEMGARD LUBRICATION ANALYSIS PROGRAM .....	98
ACCESS DOORS .....	99, 100
GREASE FITTINGS .....	100
ENGINE LUBRICATION SYSTEM .....	103
AIR FILTER SYSTEM .....	105
ENGINE COOLING SYSTEM .....	108
DIESEL FUEL SYSTEM .....	114
HYDRAULIC SYSTEM .....	118
SWING GEARBOX .....	126
FINAL DRIVE GEARBOXES .....	128

---

TABLE OF CONTENTS

MAINTENANCE AND ADJUSTMENTS ..... 129

- DRIVE BELT ..... 129
- WINDSHIELD WASHER RESERVOIR ..... 129
- BUCKET INSTALLATION ..... 130
- WELDING ON THE MACHINE ..... 130
- SEAT BELT ..... 131
- FIRE EXTINGUISHER ..... 131
- ETHER STARTING FLUID ..... 132
- TRACKS ..... 133
- TRACK SHOE BOLTS ..... 136
- ELECTRICAL SYSTEM ..... 137
- BATTERIES ..... 137
- ELECTRICAL SYSTEM CONTROLLER ..... 139
- FUSES ..... 140
- MACHINE STORAGE ..... 141

SPECIFICATIONS ..... 143

- ENGINE DATA ..... 143
- DIMENSIONS ..... 144
- OPERATING DATA ..... 146
- WEIGHTS ..... 148
- LIFTING CAPACITIES FOR STANDARD MACHINES ..... 149
- LIFTING CAPACITY CHARTS ..... 150
- BUCKETS (Central Fabricators) ..... 154
- BOLT TORQUES ..... 155

INDEX..... 157

AFTER DELIVERY CHECK .....165, 167

TRIM THIS EDGE

TABLE OF CONTENTS \_\_\_\_\_

This page left blank

## TO THE OWNER



BP97K017

Read this manual carefully before operating the machine. Instructions concerning safety, operation and maintenance have been developed to permit safe service and operation of this machine. Refer to the alphabetical index at the end of this manual for locating specific information about your machine.

This manual provides information essential to keeping your machine in good working condition, as well as being safe, reliable and durable.

The attachments and equipment available for use with this machine are intended for general earth moving purposes, handling, boring, ditch digging, etc. Read the manual(s) provided with the attachment to learn safe maintenance and operation of the machine. Make sure the machine is suitably equipped for the type of work to be performed.

**Do not use this machine for any application or purpose other than those described in this manual.** If the machine is to be used for duties involving the use of special attachments or equipment other than those approved by Case Corporation, consult your Case dealer or contact Case Corporation. Any person making unauthorized modifications is responsible for the consequences.

Continued on next page

TO THE OWNER \_\_\_\_\_

Before permitting a new operator on this machine, make sure that:

1. They have received necessary training on how to operate the machine correctly and safely.
2. They have read and fully understand the instructions given in this manual.

Always keep this manual in the storage compartment provided for it. Make sure that it is always complete and in good condition. Consult your Case dealer to obtain extra manuals or manuals in other languages. A **SAFETY VIDEO IS ALSO AVAILABLE** for purchase through your Case dealer.

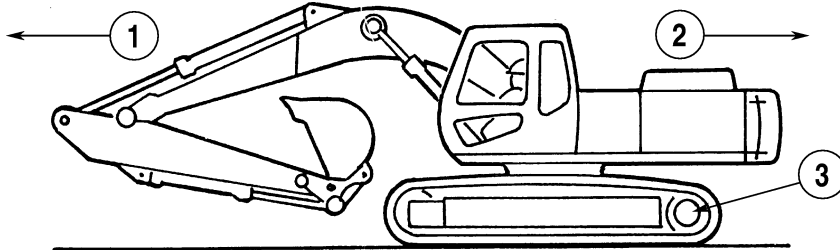
Your Case dealer is at your disposal for any further information. He will also provide any after-sale service you may require, plus genuine spare parts. Your guarantee of quality.



\_\_\_\_\_ TO THE OWNER

## RIGHT, LEFT, FRONT AND REAR SIDES OF THE MACHINE

Right-hand and left-hand, when used in this manual, indicate the right and left sides of the machine as seen from the operator's seat. Before you drive the machine, make sure the drive sprockets are at the rear of the machine. The following illustration shows the correct TRAVEL position.



B9408006

1. FORWARD
2. REARWARD
3. DRIVE SPROCKET

## IDENTIFICATION NUMBERS

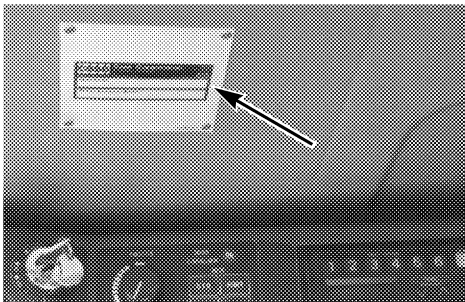
Write the Product Identification Number (P.I.N.) and the engine serial number on the lines provided below. If needed, give these numbers to your Case dealer when you need parts or information for your machine. Keep a record of these numbers and your Manufacturers Statement of Origin in a safe place. If the machine is stolen, report the numbers to your local law enforcement agency.

MACHINE MODEL NUMBER 9045B

PRODUCT IDENTIFICATION NUMBER \_\_\_\_\_

ENGINE SERIAL NUMBER \_\_\_\_\_

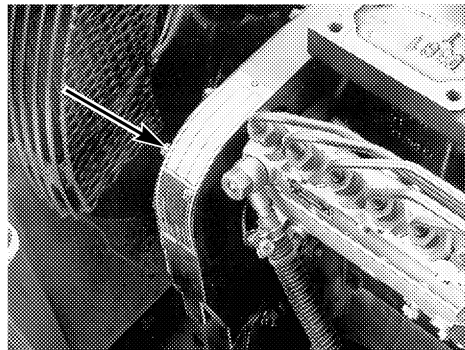
### P.I.N.



A23983

This same P.I.N. is also stamped under the base of the right boom cylinder.

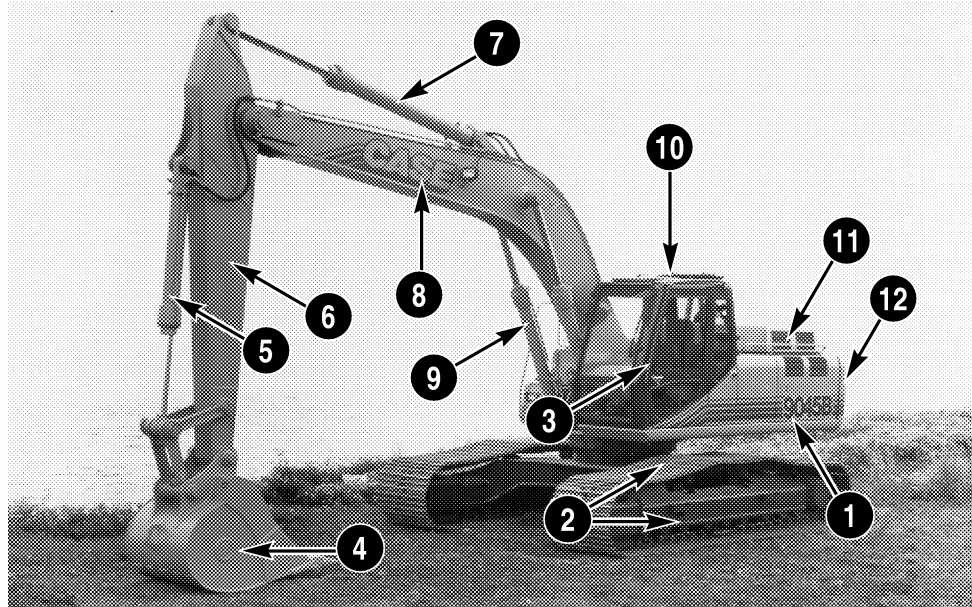
### Engine Serial Number



BP97J071

TO THE OWNER \_\_\_\_\_

## MACHINE COMPONENTS



BP97K017

- 1. UPPER STRUCTURE
- 2. STEPS
- 3. HAND RAILS
- 4. BUCKET
- 5. BUCKET CYLINDER
- 6. ARM

- 7. ARM CYLINDER
- 8. BOOM
- 9. BOOM CYLINDERS
- 10. OPERATOR'S CAB
- 11. ENGINE COMPARTMENT
- 12. REAR COUNTERWEIGHT