

GENERAL TABLE OF CONTENTS

To the Owner of a Case Machine	2
Identification Numbers/Machine Components	4, 5 and 6
Safety/Decals/Hand Signals	7
Instruments and Controls	27
Operating Instructions	53
Tracks	87
Lubrication/Maintenance Charts	91
Lubrication/Filters/Fluids	99
Maintenance and Adjustments	129
Electrical System	133
Machine Storage	137
Specifications	139
After Delivery Check	163
Alphabetical Index	167



TRIM THIS EDGE

TO THE OWNER

This manual contains important information about the safe operation, adjustment, service and maintenance of your Case Excavator. Do not operate or permit anyone else to operate or service this machine until you or the other persons have read this manual. Use only trained operators who have demonstrated the ability to operate and service this machine correctly and safely.

TRIM THIS EDGE



This excavator, with standard attachments and equipment, is intended to be used for below ground level digging and general earthmoving purposes, such as trenching, truck loading, material rehandling, and ditch cleaning.

If this excavator is to be used to lift objects, for safety purposes it is recommended that the machine is properly equipped. Contact your Case dealer and install a "Load Holding Control Device" on your machine's boom cylinders. This system prevents the sudden lowering of the load in the event of a failure of a hydraulic hose, line, or fitting in the boom hydraulic system. Such a failure can cause personal injury or death. Read "Lifting Loads with the Machine" in this manual and follow the instructions and safety precautions. See page 81.

TO THE OWNER _____

Do not use this machine for any application or purpose other than those described in this manual. If the machine is to be used in an application that involves special attachments or equipment, such as forestry, demolition, etc., consult an authorized Case dealer or the Case Corporation. Changes, additions, or modifications can be required for the machine to comply with safety requirements. Unauthorized modifications can cause serious injury or death. Anyone making such unauthorized modifications is responsible for the consequences.

Two copies of the After Delivery Check are in the back of this manual. One copy is for you and one copy is for the dealer. Make sure that your dealer does the After Delivery Check after the first 50 hours of machine operation.

This operator's manual is to be stored in the compartment behind the operator's seat and is attached with a lanyard. Make sure this manual is complete and in good condition. Contact your Case dealer to obtain additional manuals.

Contact your authorized Case dealer for any further information about this machine. Your Case dealer has genuine Case parts and service. This is your guarantee of Quality and Performance.

Signed

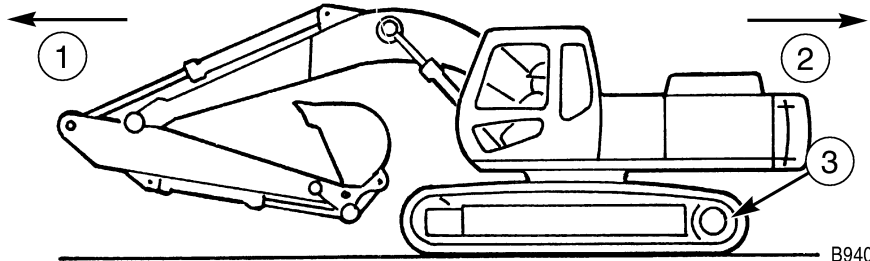
Case Corporation
Racine, WI, U.S.A.

TRIM THIS EDGE

TO THE OWNER _____

RIGHT, LEFT, FRONT, AND REAR SIDES OF THE MACHINE

Right-hand and left-hand, when used in this manual, indicate the right and left sides of the machine as seen from the operator's seat. Before you drive the machine, make sure the drive sprockets are at the rear of the machine. See the following illustration for the correct TRAVEL position.



B9408006

1. Front 2. Rear 3. Drive Sprocket

TRIM THIS EDGE

IDENTIFICATION NUMBERS

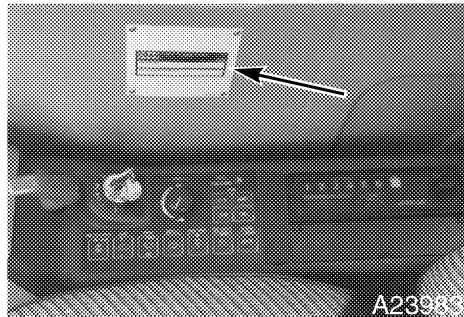
Write the Product Identification Number (P.I.N.) and the engine serial number on the lines provided below. If needed, give these numbers to your Case dealer when you need parts or information for your machine. Keep a record of these numbers and your Manufacturers Statement of Origin in a safe place. If the machine is stolen, report the numbers to your local law enforcement agency.

MACHINE MODEL NUMBER - **9040B** _____

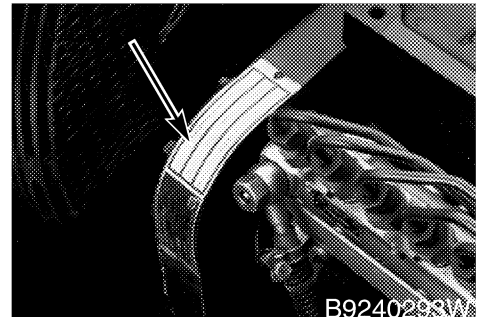
PRODUCT IDENTIFICATION NUMBER _____

ENGINE SERIAL NUMBER _____

P.I.N.



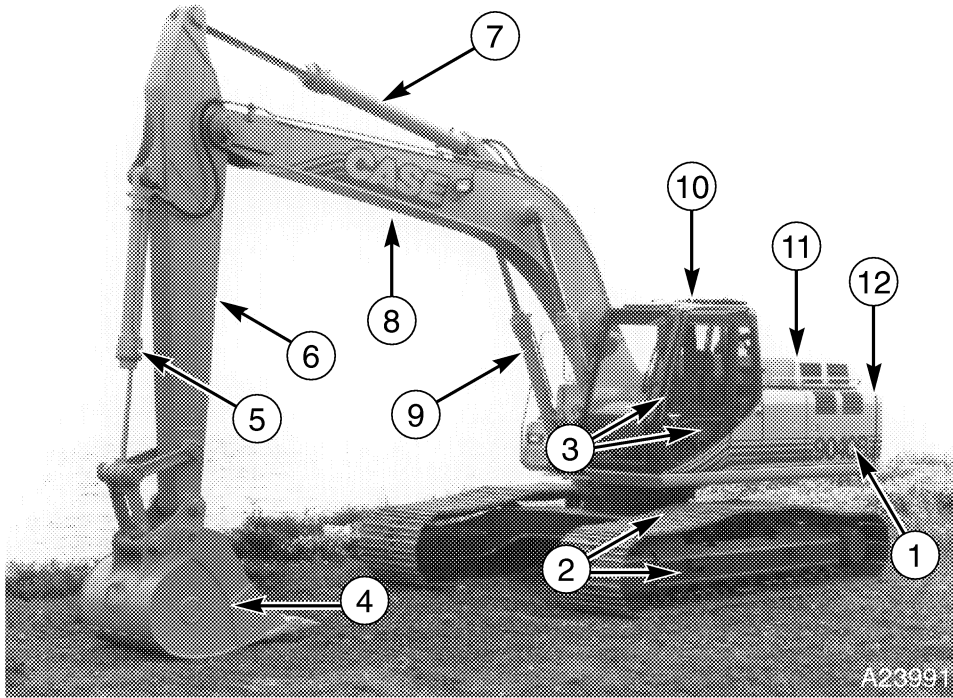
Engine Serial Number



This same P.I.N. is also stamped under the base of the right boom cylinder.

TO THE OWNER _____

MACHINE COMPONENTS



TRIM THIS EDGE

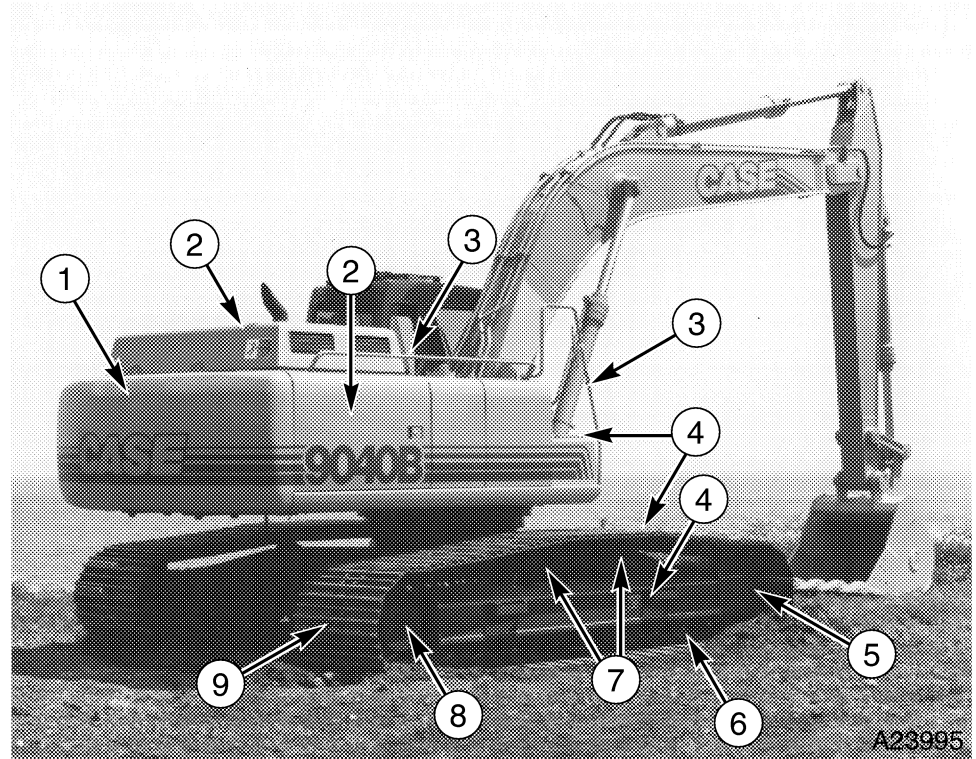
- 1. Upper Structure
- 2. Step
- 3. Hand Rails
- 4. Bucket

- 5. Bucket Cylinder
- 6. Arm
- 7. Arm Cylinder
- 8. Boom

- 9. Boom Cylinders
- 10. Operator's Cab
- 11. Engine Compartment
- 12. Rear Counterweight

MACHINE COMPONENTS (Cont'd)

TRIM THIS EDGE



- 1. Rear Counterweight
- 2. Engine Compartment
- 3. Hand Rails

- 4. Steps
- 5. Idler
- 6. Track Rollers

- 7. Track Carrier Rollers
- 8. Drive Sprocket
- 9. Track Chain

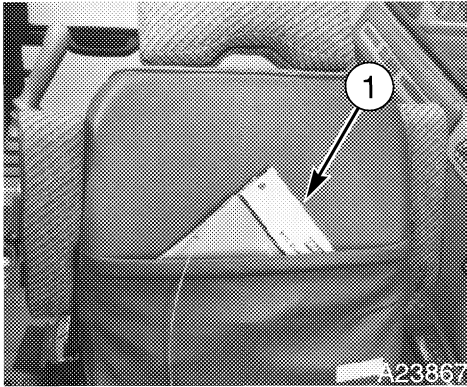
SAFETY / DECALS / HAND SIGNALS



SAFETY RULES



Most accidents involving machine operation and maintenance can be avoided by following basic rules and precautions. Read and understand all the safety messages in this manual, the EMI Safety Manual, and the safety decals on the machine before you operate or service the machine. See your Authorized Case dealer or the Case Corporation if you have any questions.



1. Operator's Manual Storage

Safety messages in this section point out situations which can be encountered during the normal operation and maintenance of your machine. These safety messages also give possible ways of dealing with these conditions.

Additional safety messages appear in the manual to indicate specific safety hazards.

READ THIS MANUAL COMPLETELY and make sure you understand the characteristics of speed, stability, steering, and operation of this machine.

Do not remove this manual or the EMI safety manual from this machine. See your Case dealer for additional manuals. Also see the inside of the rear cover of this manual for detailed information for ordering manuals.

The safety information given in this manual does not replace safety codes, insurance regulations, or federal, state/provincial, or local laws. Make sure your machine has the correct equipment according to these rules or laws.

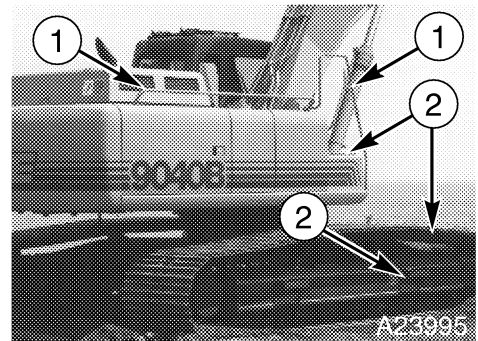
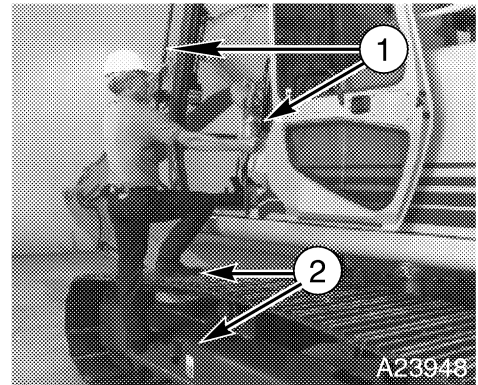
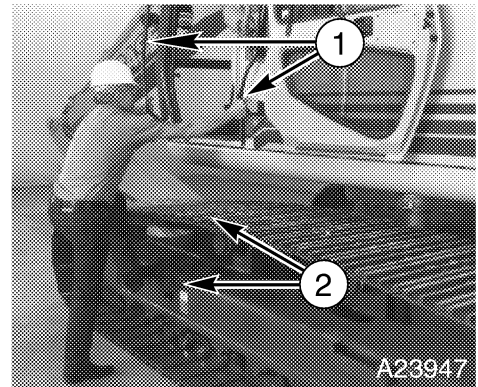
TRIM THIS EDGE



BEFORE OPERATION



- Avoid loose fitting clothing, loose or uncovered long hair, jewelry and loose personal articles.
- Different jobs will require different protective equipment. Items such as hard hats, protective shoes, heavy gloves, reflector type vests, respirators, ear protection, and eye protection can be required. Before you start the job, determine what protective equipment is required. Use this equipment at all times.
- Be prepared for emergencies. Always have a first aid kit and a working fire extinguisher with you and know how to use each. See page 131 for fire extinguisher inspection, service, etc.
- Know the hand signals used on your job. Follow the instructions of the flagman, signs, markers, etc. See pages 25 and 26 for hand signals.
- Check that all doors, guards, and covers are installed correctly and closed.
- Foreign material or grease on the steps and hand rails can cause an accident. Keep the steps and hand rails clean.
- Stay away from hazardous areas such as ditches, overhangs, etc. Walk around the work area and look for hazards before you start.
- Before you operate at night, check that all lamps illuminate.
- The secondary exit on this machine is the rear window or the roof hatch.
- To avoid falling, always face the machine and use the hand rails and steps when getting on or getting off. Do not rush.



1. Hand Rails 2. Steps

TRIM THIS EDGE

SAFETY/DECALS/HAND SIGNALS _____

- Make sure that all windows are clean and that the windshield wipers work correctly.
 - Remove all loose objects from the operator's area and cab. Loose objects can jam controls and cause accidents.
 - Before you start each day, walk around the machine and check for oil or fluid leaks. Replace all broken or missing parts and do the required lubrication and maintenance as shown in this manual. Clean all trash and debris from the machine, especially from the engine area.
 - Make sure all persons are away from the machine.
 - Engine exhaust fumes can cause death. If you operate this machine in an enclosed area, use good ventilation to replace the exhaust fumes with fresh air.
 - Know the rules, laws, and safety equipment necessary for transporting this machine on a road or highway.
- Before you start the engine:
 1. Make sure the Foot and Hand Controls are in NEUTRAL.
 2. Move the left Control Console down to the OPERATING position.
 3. Move the Gate Lock Control Lever forward and down to the OPERATING position.
 4. Turn the key switch to ON.
 5. Put the Control Lock Switch in the LOCKED position.
 6. Rotate the Engine Throttle Control to the IDLE position.
 7. Sound the horn to warn all persons that you are going to start the engine.
 8. Start the engine.
 9. After the engine is started, put the Control Lock Switch in the RELEASED position.

TRIM THIS EDGE

SAFETY/DECALS/HAND SIGNALS _____



MACHINE OPERATION



TRIM THIS EDGE

- Check all controls in a clear area and make sure the machine is operating correctly.
- Before you start, know the travel direction (drive sprockets at the rear of the machine).
- Do not allow other persons to ride anywhere on the machine, including the bucket or attachment. Other persons can fall or can cause an accident. This is a one person machine with only one operator's seat.
- Dust, fog, smoke, etc., can decrease or block your vision and cause an accident. Stop the machine or decrease the speed until you can see everything around you in your area. Make sure the machine lamps are ON.
- Contact with high voltage power lines, underground cables, etc., can cause serious injury or death from electrocution.

Before you drive or operate in an area with high voltage lines, cables, or a power station, tell the power or utility company what you are going to do. You **MUST HAVE THE POWER DISCONNECTED OR KEEP A SAFE WORKING DISTANCE** from the lines, cables, or powerstation. Keep all parts of the machine at least 15 feet (4.6 m) away from the power source. You must also know any federal, state/provincial, or local safety codes or regulations that apply to the job site.

If a part of the machine touches high voltage power:

1. Warn other workers **NOT TO TOUCH THE MACHINE** and to stay away from the machine.
 2. If you can break contact, reverse the operation that caused contact with the high voltage power, and move the machine away from the danger area. If you cannot break contact, stay in the machine until the utility company de-energizes the line and tells you that the power is off.
 3. If you have extreme conditions, such as a fire, etc., and you are forced to leave the machine, do not step off the machine. Jump as far from the machine as possible with your feet together and do not touch the ground with your hands.
 4. Then, hop away with your feet together until you are a safe distance from the machine and the electrical current. Do not take large steps. Because of the voltage differential across the ground, one foot can be in a higher voltage area than the other foot. This difference can kill you.
- Do not operate the machine if you do not feel well. This can be dangerous for you and for the people around you.
 - Operate the machine smoothly. Do not make sudden starts or stops.