

**9030B  
EXCAVATOR**

**Operator's Manual**

Bur 9-25831NA

Reprinted





***This symbol means ATTENTION! BECOME ALERT! YOUR SAFETY IS INVOLVED. The message that follows the symbol contains important information about your safety. Carefully read the message. Make sure you fully understand the causes of possible injury or death.***

SB001

IF THIS MACHINE IS USED BY AN EMPLOYEE, IS LOANED, OR IS RENTED, MAKE SURE THAT THE OPERATOR UNDERSTANDS THE TWO INSTRUCTIONS BELOW.

BEFORE THE OPERATOR STARTS THE ENGINE:

1. GIVE INSTRUCTIONS TO THE OPERATOR ON SAFE AND CORRECT USE OF THE MACHINE.
2. MAKE SURE THE OPERATOR READS AND UNDERSTANDS THE OPERATOR'S MANUAL FOR THIS MACHINE.

# **WARNING**

**IMPROPER OPERATION OF THIS MACHINE CAN CAUSE INJURY OR DEATH.**

BEFORE STARTING THE ENGINE, DO THE FOLLOWING:

1. READ THE OPERATOR'S MANUAL.
2. READ ALL SAFETY DECALS ON THE MACHINE.
3. CLEAR THE AREA OF OTHER PERSONS.

LEARN AND PRACTICE SAFE USE OF MACHINE CONTROLS IN A SAFE, CLEAR AREA BEFORE YOU OPERATE THIS MACHINE ON A JOB SITE.

It is your responsibility to observe pertinent laws and regulations and to follow manufacturer's instructions on machine operation and maintenance.

See your Authorized Case dealer for additional operator's manuals, parts catalogs, and service manuals.

## TABLE OF CONTENTS

TO THE OWNER .....	1
RIGHT, LEFT, FRONT AND REAR SIDES OF THE MACHINE .....	3
IDENTIFICATION NUMBERS .....	3
MACHINE COMPONENTS .....	4, 5
SAFETY / DECALS / HAND SIGNALS .....	7
SAFETY MESSAGE .....	7
BEFORE OPERATION .....	8
MACHINE OPERATION .....	10
PARKING THE MACHINE .....	12
BURN PREVENTION .....	12
FIRE OR EXPLOSION PREVENTION .....	13
MAINTENANCE .....	14
SAFETY DECALS .....	16
HAND SIGNALS .....	25, 26
INSTRUMENTS AND CONTROLS .....	27
LOCATION OF COMPONENTS (Operator's Cab) .....	27
HAND AND FOOT CONTROLS .....	28
STANDARD CONTROLS (Control Pattern D When Quick Change Kit Is Installed) .....	29
OPTIONAL CONTROLS (Control Pattern C When Quick Change Kit Is Installed) .....	30
RIGHT FRONT CONTROL PANEL .....	32, 34
LEFT FRONT CONTROL PANEL .....	36
SYSTEMS DISPLAY PANEL .....	38, 41, 42
RIGHT REAR CONTROL PANEL .....	44
LEFT REAR CONTROL PANEL .....	45
OPERATION OF HEATING AND AIR CONDITIONING (If Equipped) .....	46
AM / FM RADIO .....	48
OPERATOR'S SEAT (Units With Non-Retracting Seat Belts) .....	49
OPERATOR'S SEAT (Units With Retractable Seat Belts) .....	50
SEAT BELT (Units With Non-Retracting Seat Belts) .....	51
SEAT BELT (Units With Retractable Seat Belts) .....	52
CAB WINDOW AND DOOR CONTROLS .....	53
ANTI-VANDAL GUARD .....	56

TABLE OF CONTENTS

---

TRIM THIS EDGE

OPERATING INSTRUCTIONS .....	57
RUN-IN PERIOD OF A NEW MACHINE .....	57
ENGINE OPERATION .....	58
ENGINE STARTING AIDS .....	62
ETHER COLD START AID .....	63
BOOSTER BATTERY CONNECTION TO MACHINE BATTERY .....	64
MACHINE OPERATION .....	66
DRIVING THE MACHINE .....	67
LONG REACH EXCAVATOR .....	73
AUXILIARY ATTACHMENT OPERATION .....	76
AUXILIARY HYDRAULIC SYSTEMS .....	77
LIFTING LOADS WITH THE MACHINE .....	84
TRANSPORTING THE MACHINE ON A TRAILER .....	85
DISABLED MACHINE .....	85
OPERATING IN HOT WEATHER .....	87
MACHINE LIFTING EYES .....	87
OPERATING IN COLD WEATHER .....	88
LUBRICATION / FILTERS / FLUIDS .....	89
GENERAL SAFETY BEFORE YOU SERVICE .....	89
ENVIRONMENT .....	89
LUBRICATION CHART .....	90
PLASTIC AND RESIN PARTS .....	92
ENGINE HOURMETER .....	92
FLUIDS AND LUBRICANTS .....	93
ENGINE OIL RECOMMENDATIONS .....	94
HYDRAULIC FLUID CHART .....	95
SYSTEMGARD LUBRICATION ANALYSIS PROGRAM .....	96
ACCESS DOORS .....	97, 98
GREASE FITTINGS .....	98
ENGINE LUBRICATION SYSTEM .....	101
AIR FILTER SYSTEM .....	103
ENGINE COOLING SYSTEM .....	106
DIESEL FUEL SYSTEM .....	110
HYDRAULIC SYSTEM .....	114
SWING GEARBOX .....	121
FINAL DRIVE GEARBOXES .....	123

TABLE OF CONTENTS

MAINTENANCE AND ADJUSTMENTS ..... 125  
DRIVE BELT ..... 125  
WINDSHIELD WASHER RESERVOIR ..... 125  
BUCKET INSTALLATION ..... 126  
WELDING ON THE MACHINE ..... 126  
SEAT BELT ..... 127  
FIRE EXTINGUISHER ..... 127  
ETHER STARTING FLUID ..... 128  
TRACKS ..... 129  
TRACK SHOE BOLTS ..... 132  
ELECTRICAL SYSTEM ..... 133  
BATTERIES ..... 133, 134, 135  
ELECTRICAL SYSTEM CONTROLLER ..... 135  
FUSES ..... 136  
MACHINE STORAGE ..... 137

SPECIFICATIONS ..... 139  
ENGINE DATA (Prior to P.I.N. DAC0302001) ..... 139  
EMISSION ENGINE DATA ( P.I.N. DAC0302001 and After) ..... 140  
WEIGHTS ..... 141  
DIMENSIONS ..... 142, 144, 146  
OPERATING DATA ..... 148, 150  
LIFTING CAPACITIES FOR STANDARD AND NARROW MACHINES ..... 152  
LIFTING CAPACITY CHARTS ..... 153  
LIFTING CAPACITIES FOR LONG REACH MACHINE ..... 165  
BUCKETS (Central Fabricators) ..... 170  
BOLT TORQUES ..... 172

INDEX ..... 175

AFTER DELIVERY CHECK ..... 185, 187

TRIM THIS EDGE

TABLE OF CONTENTS

---

TRIM THIS EDGE

This page left blank

## TO THE OWNER



BP97H003

Read this manual carefully before operating the machine. Instructions concerning safety, operation and maintenance have been developed to permit safe service and operation of this machine. Refer to the alphabetical index at the end of this manual for locating specific information about your machine.

This manual provides information essential to keeping your machine in good working condition, as well as being safe, reliable and durable.

The attachments and equipment available for use with this machine are intended for general earth moving purposes, handling, boring, ditch digging, etc. Read the manual(s) provided with the attachment to learn safe maintenance and operation of the machine. Make sure the machine is suitably equipped for the type of work to be performed.

**Do not use this machine for any application or purpose other than those described in this manual.** If the machine is to be used for duties involving the use of special attachments or equipment other than those approved by Case Corporation, consult your Case dealer or contact Case Corporation. Any person making unauthorized modifications is responsible for the consequences.

Continued on next page

TRIM THIS EDGE

TO THE OWNER \_\_\_\_\_

Before permitting a new operator on this machine, make sure that:

1. They have received necessary training on how to operate the machine correctly and safely.
2. They have read and fully understand the instructions given in this manual.

Always keep this manual in the storage compartment provided for it. Make sure that it is always complete and in good condition. Consult your Case dealer to obtain extra manuals or manuals in other languages. A **SAFETY VIDEO IS ALSO AVAILABLE** for purchase through your Case dealer.

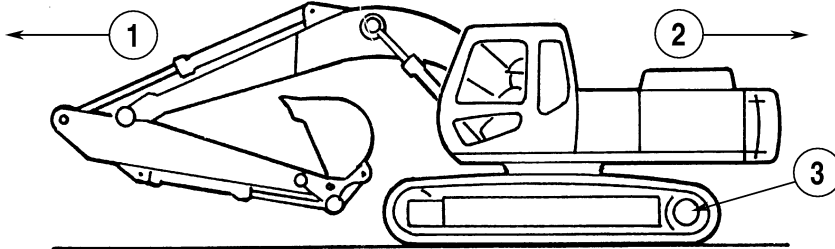
Your Case dealer is at your disposal for any further information. He will also provide any after-sale service you may require, plus genuine spare parts. Your guarantee of quality.

TRIM THIS EDGE



## RIGHT, LEFT, FRONT AND REAR SIDES OF THE MACHINE

Right-hand and left-hand, when used in this manual, indicate the right and left sides of the machine as seen from the operator's seat. Before you drive the machine, make sure the drive sprockets are at the rear of the machine. The following illustration shows the correct TRAVEL position.



B9408006

- 1. FORWARD
- 2. REARWARD
- 3. DRIVE SPROCKET

## IDENTIFICATION NUMBERS

Write the Product Identification Number (P.I.N.) and the engine serial number on the lines provided below. If needed, give these numbers to your Case dealer when you need parts or information for your machine. Keep a record of these numbers and your Manufacturers Statement of Origin in a safe place. If the machine is stolen, report the numbers to your local law enforcement agency.

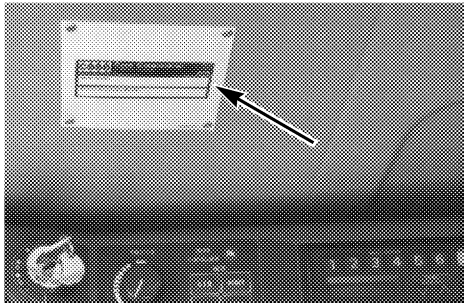
MACHINE MODEL NUMBER \_\_\_\_\_

PRODUCT IDENTIFICATION NUMBER \_\_\_\_\_

ENGINE SERIAL NUMBER \_\_\_\_\_

TRIM THIS EDGE

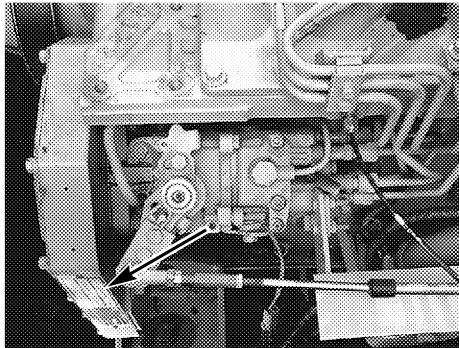
### P.I.N.



A23983

This same P.I.N. is also stamped under the base of the right boom cylinder.

### Engine Serial Number

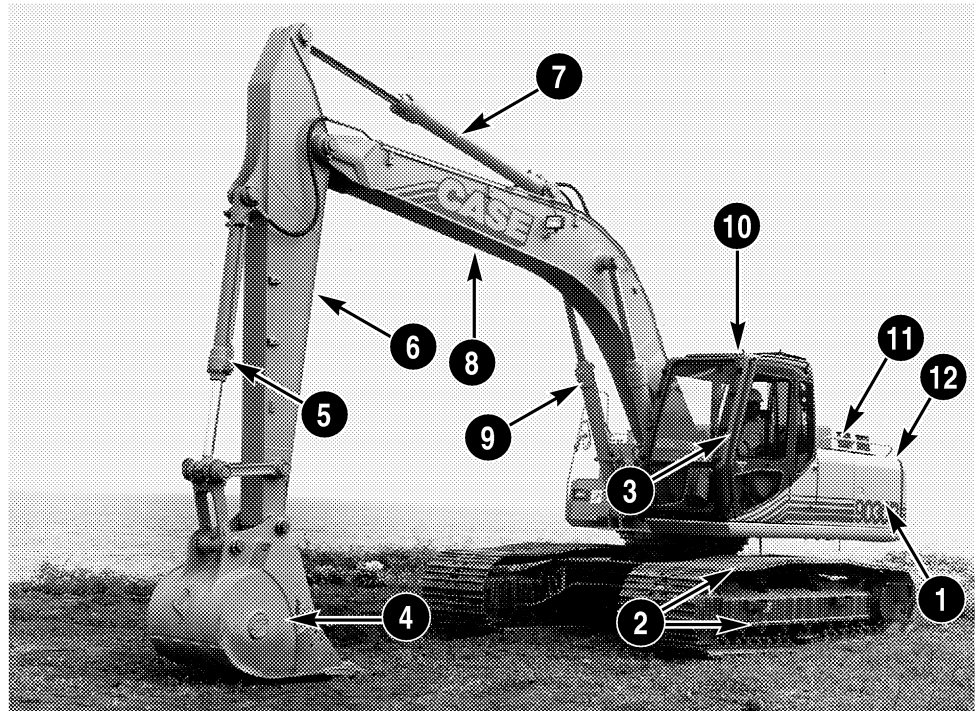


BP97H002

TO THE OWNER \_\_\_\_\_

### MACHINE COMPONENTS

TRIM THIS EDGE



BP97H003

- 1. UPPER STRUCTURE
- 2. STEPS
- 3. HAND RAILS
- 4. BUCKET
- 5. BUCKET CYLINDER
- 6. ARM

- 7. ARM CYLINDER
- 8. BOOM
- 9. BOOM CYLINDER
- 10. OPERATOR'S CAB
- 11. ENGINE COMPARTMENT
- 12. REAR COUNTERWEIGHT