

**880C  
Excavator**  
**Operators Manual**

**9-8090**

Reprinted





*THIS SAFETY ALERT SYMBOL INDICATES IMPORTANT SAFETY MESSAGES IN THIS MANUAL. WHEN YOU SEE THIS SYMBOL, CAREFULLY READ THE MESSAGE THAT FOLLOWS AND BE ALERT TO THE POSSIBILITY OF PERSONAL INJURY OR DEATH.*

IF THIS MACHINE IS USED BY AN EMPLOYEE OR IS LOANED OR RENTED, MAKE ABSOLUTELY CERTAIN THAT THE OPERATOR(S), PRIOR TO OPERATING:

1. IS INSTRUCTED IN SAFE AND PROPER USE.
2. REVIEWS AND UNDERSTANDS THE MANUAL(S) PERTAINING TO THE MACHINE.

# **WARNING**

## **BEFORE STARTING ENGINE**

**STUDY OPERATOR'S MANUAL SAFETY MESSAGES  
READ ALL SAFETY SIGNS ON MACHINE  
CLEAR THE AREA OF OTHER PERSONS**

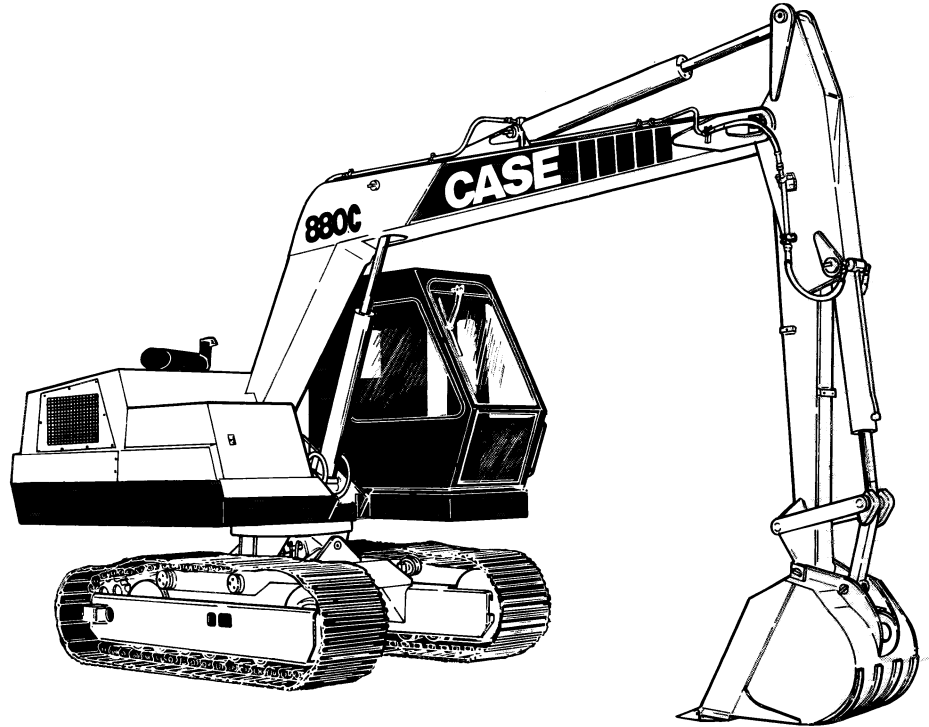
## **LEARN & PRACTICE SAFE USE OF CONTROLS BEFORE OPERATING**

**IT IS YOUR RESPONSIBILITY TO UNDERSTAND AND FOLLOW MANUFACTURER'S INSTRUCTIONS  
ON MACHINE OPERATION, SERVICE, AND TO OBSERVE PERTINENT LAWS AND REGULATIONS.  
OPERATOR AND SERVICE MANUALS MAY BE OBTAINED FROM YOUR EQUIPMENT DEALER.**

## TABLE OF CONTENTS

Introduction.....	3	Lubrication Points.....	57
To the Case Owner.....	3	Engine Lubrication System.....	60
Delivery of New Machine.....	3	Engine Oil.....	60
After Delivery Checkup.....	3	Oil Filters.....	61
Directional Reference.....	4	Engine Air Cleaning System.....	62
Parts and Service.....	4	Restriction Indicator.....	63
Safety.....	5	Air Cleaner Servicing.....	63
Specifications.....	16	Engine Cooling System.....	67
Engine.....	16	Radiator Cap.....	67
Crawler Undercarriage.....	16	Coolant.....	68
Turntable Swing.....	16	Cleaning the System.....	69
Buckets.....	17	Radiator/Oil Cooler Cleaning.....	70
Electrical System.....	17	Thermostat.....	70
Hydraulic System.....	17	Fan Belts.....	72
Operating Weights and Dimensions.....	18	Checking Tension.....	72
International Symbols.....	18	Fan Belt Adjustment.....	73
Operating Instructions.....	19	Engine Cold Start Kit.....	74
Controls - Identification.....	19	Fuel System.....	75
Controls in Operator's Cab.....	19	Fuel Conditioner.....	75
Instrument Panel in Operator's Cab.....	21	Draining Water from the System.....	75
Electrical Circuit Protection.....	24	Bleeding the System.....	77
Heater.....	26	Servicing Fuel Filters.....	77
Engine Operation.....	27	Electrical System.....	79
Run In.....	27	Starter Motor.....	79
Prestarting Instructions.....	28	Alternator.....	79
Starting.....	28	Battery Care and Maintenance.....	80
Operating Precautions.....	29	Booster Batteries.....	81
Warm-Up.....	29	Hydraulic System.....	83
Idling.....	29	Oil Level.....	83
Stopping.....	30	Hydraulic Filters.....	84
Starting Aids.....	30	Changing Hydraulic Oil.....	86
Operating the Excavator.....	32	Reservoir Breather Filter.....	87
Seat Adjustments.....	32	Mechanical Components.....	88
Operator's Controls Adjustment.....	33	Swing Gearbox.....	88
Raising and Lowering Cab Windows.....	34	Turntable Open Gear.....	89
Using the Controls.....	36	Track Drive Transmissions.....	90
Cold Weather Operation.....	45	Digging Brake Adjustments.....	90
Extreme Cold Weather Operation.....	46	Torquing Turntable Capscrews.....	91
Hot Weather Operation.....	46	Control Linkages.....	99
Operating Tips.....	47	House Brake Linkage.....	96
Planning the Job.....	47	Booms.....	98
Excavating.....	48	Hoist Cylinder Adjustments.....	97
Backhoe Buckets.....	48	Crowd Cylinder Adjustments.....	97
Ripper Tooth.....	48	"Y" Tool Boom Extension Adjustments.....	98
Digging on Hard Surfaces.....	48	Removal of Tool Boom Extension.....	99
Working in Wet or Muddy Areas.....	49	Attachments.....	100
Cleaning the Tracks.....	50	Backhoe and Ditch Buckets.....	100
Machine Shutdown.....	50	Front Loading Shovels.....	100
Fuels and Lubricants.....	51	Wrist-O-Twist.....	101
Diesel Fuel.....	51	Attaching Tool to Wrist-O-Twist.....	101
Fuel Specifications.....	51	Tracks.....	102
Fuel Storage.....	51	Track Tension Adjustment.....	102
Lubricants.....	52	Operator's Cab.....	103
Fuels, Fluids and Lubricants Chart.....	53	General Maintenance.....	103
Maintenance/Lubrication.....	54	Operator's Seat and Trim.....	103
Introduction.....	54	Machine Storage.....	105
Run-In Period.....	54	Placing Machine in Storage.....	105
Scheduled Maintenance.....	54	Reactivating Machine.....	107
Run-In Maintenance Chart.....	55	After Delivery Checkup.....	109
Scheduled Maintenance Chart.....	55		

## INTRODUCTION



## TO THE OWNER

This manual is your guide to safe, productive operation. Read it carefully. It will help to reduce trial and error learning. It should also minimize damage and downtime caused by improper maintenance.

### DELIVERY OF NEW MACHINE

At the time your Case Dealer delivers your new machine, he will show you its operation and maintenance as outlined in the "Owner Warranty Registration and Delivery Report". When your Dealer has completed these instructions, he will ask you to sign the report and will then give you a copy for your records.

### AFTER DELIVERY CHECKUP

Three copies of the After Delivery Checkup form are in the back of this manual. One copy is for you the owner, one for the dealer and one copy for Construction Equipment Service. Make arrangements with your Authorized Case Dealer to have the After Delivery Checkup performed after the first 20 hours of operation.

**NOTE:** The only charge your dealer will make for this inspection will be for filters, oil or other accessories. If the checkup is not performed in the dealer's shop, travel time and mileage may also be charged.

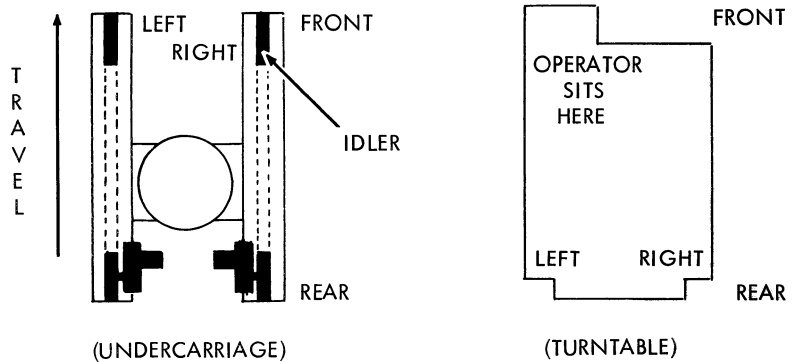
If you require additional information, contact us.

*Your Authorized Case Dealer*

CASE CORPORATION has the right to make improvements in design or changes in specifications at any time, without having any obligation relating to such changes.

## DIRECTIONAL REFERENCE

The turntable on the EXCAVATOR will rotate through a complete 360° circle. The normal travel position is with the boom over the front or idler end of the undercarriage. In this position, directional callouts for both the turntable and undercarriage are the same. All reference to Front, Rear, Right and Left will be made with respect to this position. RIGHT is the operator's right, LEFT is the operator's left.

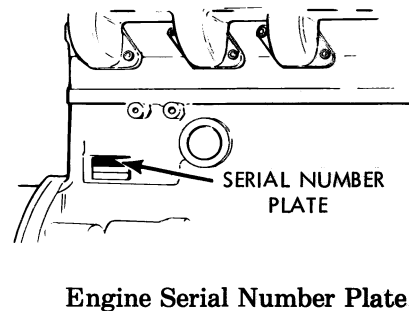
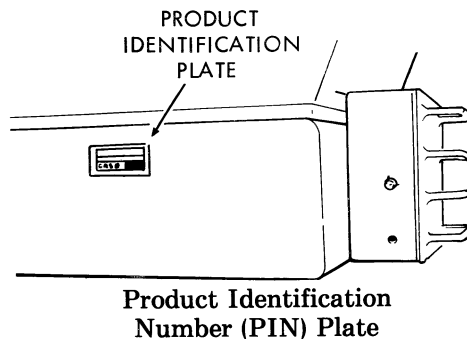


Directional Reference

## PARTS AND SERVICE

When writing or calling your Authorized Case Dealer about your Case machine, always refer to the model and Product Identification Number (PIN) as well as the part name and location. The EXCAVATOR Product Identification Number plate is located on the lower right front side of the operator's cab. Engine serial number plate is as shown below.

In addition to the above serial plates major components such as, motors, brakes, etc. are identified by a serial plate located on the component housing.



# SAFETY

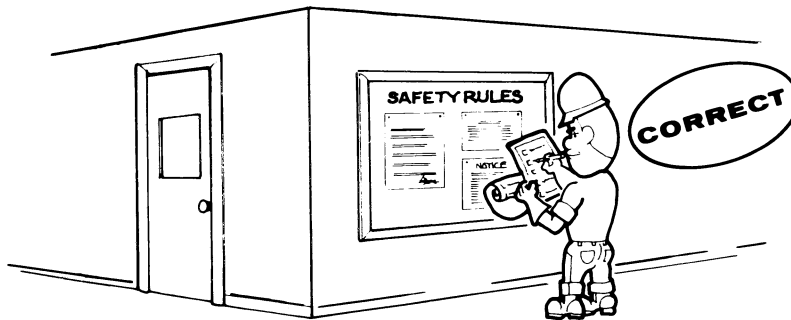
## SAFETY RULES

Your safety and the safety of those around you is highly dependent upon the care and good judgement you exercise in the use of this equipment. Know the positions and functions of all controls before attempting to operate. **BE SURE TO CHECK ALL CONTROLS IN A SAFE OPEN AREA BEFORE STARTING YOUR WORK.**

**READ THIS MANUAL THOROUGHLY** and make sure you understand its contents. All equipment has limitations. Be sure you understand, for example, the speed, braking, steering, stability and load characteristics of this machine before starting to operate.

The safety information presented in this manual is not intended to replace safety codes, insurance requirements, federal, state and local laws, rules and regulations. Know the regulations and laws that apply to your area and be sure that your machine is properly equipped to meet such laws and regulations.

It is recommended that the following safety rules be posted on the job site.



## Pre-Starting

**WARNING:** Before starting engine, study operator's manual safety messages. Read all safety signs on machine. Clear the area of other persons. Learn and practice safe use of control before operating.



It is your responsibility to understand and follow manufacturer's instructions on machine operation, service, and to observe pertinent laws and regulations. Operators and service manuals may be obtained from your J I Case dealer.

**IMPORTANT:** Always install new decals whenever the old decals are destroyed, lost, painted over or illegible. When individual parts are replaced that have decals attached, be sure to install a new decal with the new part. Decals are available from your Case dealer.



**CAUTION:** Wear the proper safety equipment - avoid loose clothing. Obtain additional safety equipment when your safety may be in doubt. Hard hat, safety shoes, ear protectors, reflective clothing, safety goggles and heavy gloves may be required.

**WRONG**



**CORRECT**



**WARNING:** Be sure the operator's area, steps and grab handles are free of oil, loose objects or ice. Remove or secure all maintenance or personal items. Failure to keep these areas clean could cause a serious accident.



**CAUTION:** Carry and maintain a fire extinguisher and first aid kit at all times. Know how to use them both.





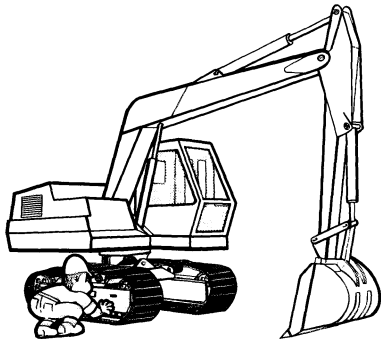
**WARNING:** Know the location of underground cables, water mains, gas lines, etc. A ruptured gas line or cut electrical line could result in personal injury.



**CAUTION:** Understand the machine's limitations. Keep it under control at all times. **DO NOT TRY TO DO TOO MUCH TOO FAST.**



**CAUTION:** Visually check out the machine for leaks and broken, missing or malfunctioning parts. Be sure all caps, dip sticks, battery covers, etc. are secure before starting. A part failure during operation could cause injury.



**CORRECT**



**CAUTION:** Check that all lights (if so equipped) are functioning properly before operating at night.



**CAUTION:** Clean the windshield and windows to provide good visibility. Be sure the windshield wipers are in good condition. Dirty windows contribute to accidents.

## Operation



**WARNING:** Never operate this machine unless you are fully aware of the location of all the controls. Any changes to the controls must be clearly noted and posted in the operator's cab. If any control changes are made, a new operator's control pattern decal must be installed in the cab to warn other operators of these changes.



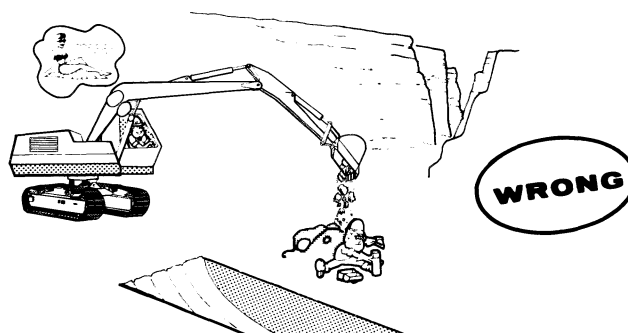
**WARNING:** Never operate any of the controls from any position other than seated in the operator's seat.



**WARNING:** Before starting the engine make sure all operating controls are in NEUTRAL.



**CAUTION:** At all times during operation BE ALERT! Watch for people or obstructions. ALWAYS USE EXTREME CAUTION when operating in the vicinity of people.



**CAUTION:** Never leave the engine running when the machine is unattended.



**CAUTION:** Always use both hands when climbing on or off the machine. Never get on or off a machine while it is moving.



**CAUTION:** The only person required when the machine is operating is the operator. Never allow anyone to ride on the outside of the machine. Never allow anyone to ride in or on the attachment.