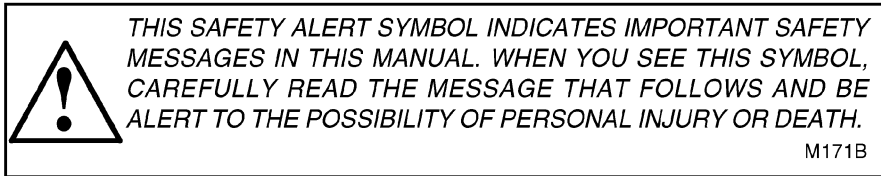


**170 C
Excavator**
Operators Manual

9-12642








If Safety Decals on this machine use the words **Danger, Warning or Caution**, which are defined as follows:

- **DANGER:** Indicates an immediate hazardous situation which if not avoided, will result in death or serious injury. The color associated with Danger is RED.
- **WARNING:** Indicates an potentially hazardous situation which if not avoided, will result in serious injury. The color associated with Warning is ORANGE.
- **CAUTION:** Indicates an potentially hazardous situation which if not avoided, may result in minor or moderate injury. It may also be used to alert against unsafe practices. The color associated with Caution is YELLOW.

If Safety Decals on this machine are ISO two panel Pictorial, decals are defined as follows:

- The first panel indicates the nature of the hazard.
- The second panel indicates the appropriate avoidance of the hazard.
- Background color is YELLOW.
- Prohibition symbols such as   and  if used, are RED.



WARNING

IMPROPER OPERATION OF THIS MACHINE CAN CAUSE INJURY OR DEATH. BEFORE USING THIS MACHINE, MAKE CERTAIN THAT EVERY OPERATOR:

- Is instructed in safe and proper use of the machine.
- Reads and understands the Manual(s) pertaining to the machine.
- Reads and understands ALL Safety Decals on the machine.
- Clears the area of other persons.
- Learns and practices safe use of machine controls in a safe, clear area before operating this machine on a job site.

It is your responsibility to observe pertinent laws and regulations and follow Case Corporation instructions on machine operation and maintenance.

TO THE OWNER _____

TO THE OWNER OF A CASE EXCAVATOR

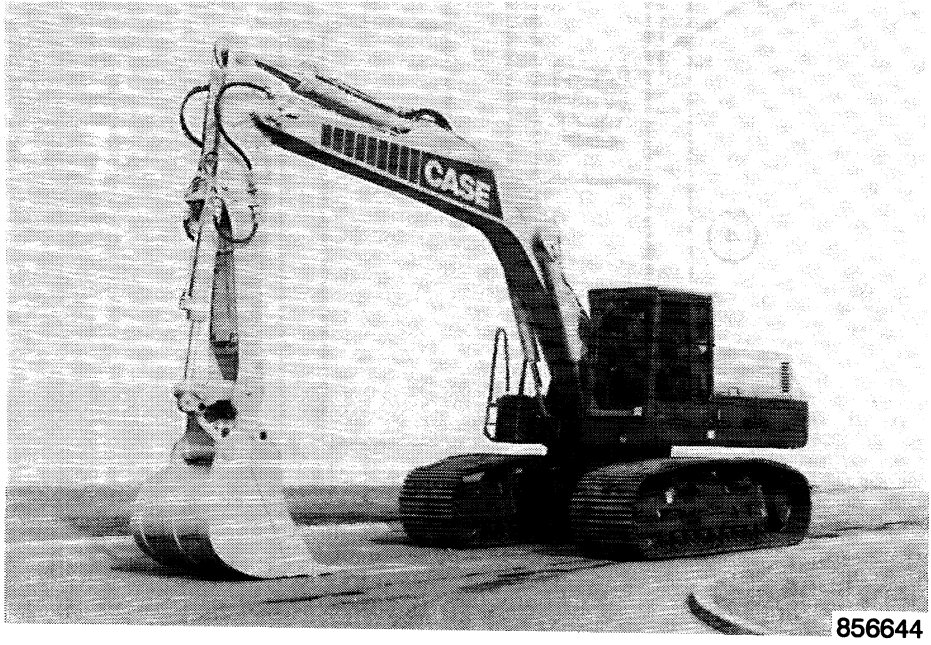
Use this manual as your guide. If you follow the instructions given in this manual, your Case excavator will work well for many years.

Your Dealer can give you assistance with J.I. Case Company made parts and personnel with special training that know the best methods of repair and maintenance for your excavator.

Call your Dealer if you need any assistance or information.

Your authorized Case dealer

MODEL 170 C EXCAVATOR



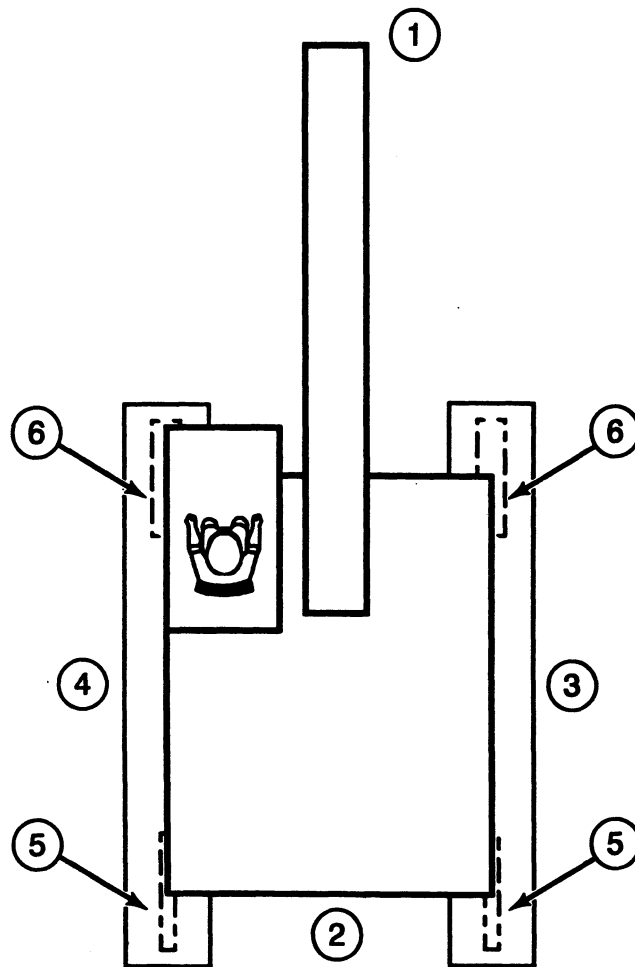
TO THE OWNER _____

RIGHT, LEFT, FRONT AND REAR OF THE MACHINE

Right, left, front and rear, when used in this manual, indicate the sides of the machine as seen from the operators seat with the cab over the idler wheels.

The following illustration shows the machine in the normal TRAVEL and WORKING position.

The normal TRAVEL and WORKING position is with the cab over the idler wheels. The drive sprockets are at the rear of the turntable.



830634C

- | | |
|--------------------|-------------------|
| 1. FRONT | 4. LEFT HAND SIDE |
| 2. REAR | 5. DRIVE SPROCKET |
| 3. RIGHT HAND SIDE | 6. IDLER WHEEL |

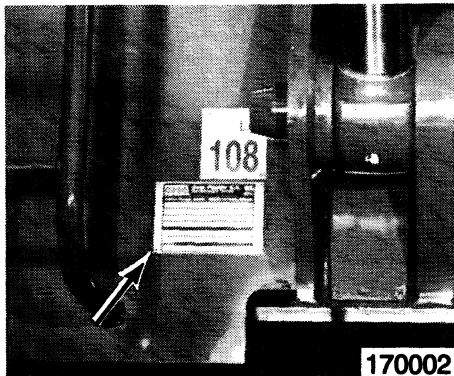
IDENTIFICATION NUMBERS _____

PRODUCT IDENTIFICATION AND SERIAL NUMBERS

When ordering parts or when requesting information or assistance always give the identification numbers of your machine.

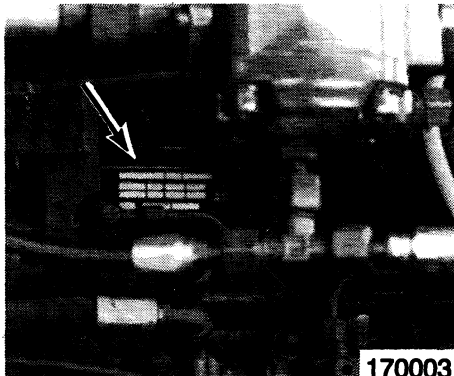
Write the model and serial numbers of your machine on the lines below.

MODEL/PIN NUMBERS



Model Number _____
Pin Number _____

ENGINE



Serial Number _____

GENERAL TABLE OF CONTENTS

To the Owner	1	
Identification Numbers	3	
Safety/Decals/Hand Signals.....	7	
Specifications	21	
Instruments/Controls	33	
Operating Instructions.....	49	
Job Site Operation	75	
Tracks	81	
Lubrication/Filters/Fluids	87	
Maintenance/Adjustments.....	113	
Electrical System.....	121	
Storage.....	131	

SECTIONAL INDEX

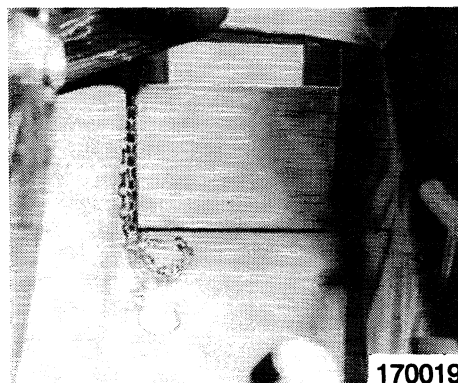
Decals	12-15
Hand signals	16-19
Safety.....	8-11

SAFETY/DECALS/HAND SIGNALS _____

SAFETY

Your safety and safety of persons in the area depend on you. It is your responsibility to understand this operators manual for the correct operation, inspection, lubrication, and maintenance of this machine.

Know the positions and operation of each control before you start. **MAKE SURE YOU CHECK ALL CONTROLS IN A SAFE, CLEAR AREA BEFORE YOU START WORKING.**



READ THIS MANUAL COMPLETELY and make sure you understand the characteristics of speed, stability, brakes, and steering, of this machine. If you have any questions, see your dealer.

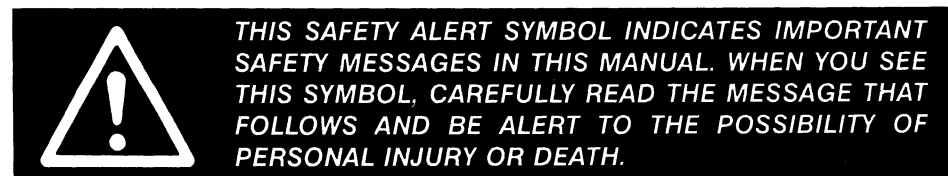
Do not remove this manual from the machine. See your dealer for additional manuals.

MANUAL STORAGE

The safety provisions applicable to individual or public contracts, regardless of the job concerned (earthmoving, handling, boring, etc.) are those which comply with safety regulations prevailing in the country and in the field.

When working on a public highway, use the standard traffic signs and take into consideration the working area of the upperstructure and attachments. Local regulations stipulate the number, type and location of panels and reflectors.

The information given in this chapter is a summary of basic rules to be observed at all times and does not free the user from the obligation to abide by the legal provisions outlined above.



IMPORTANT : *Safety messages in this section drew attention to situations which can be encountered during the normal operation and maintenance of your machine. These safety messages also give possible ways of dealing with these conditions.*

Additional safety messages are used in the text of the manual to show specific safety hazards.