

TO THE OWNER _____

TO THE OWNER OF A CASE EXCAVATOR

Use this manual as your guide. If you follow the instructions given in this manual, your Case excavator will work well for many years.

Your Dealer can give you assistance with Case Company made parts and persons with special training that know the best methods of repair and maintenance for your excavator.

Call your Dealer if you need any assistance or information.

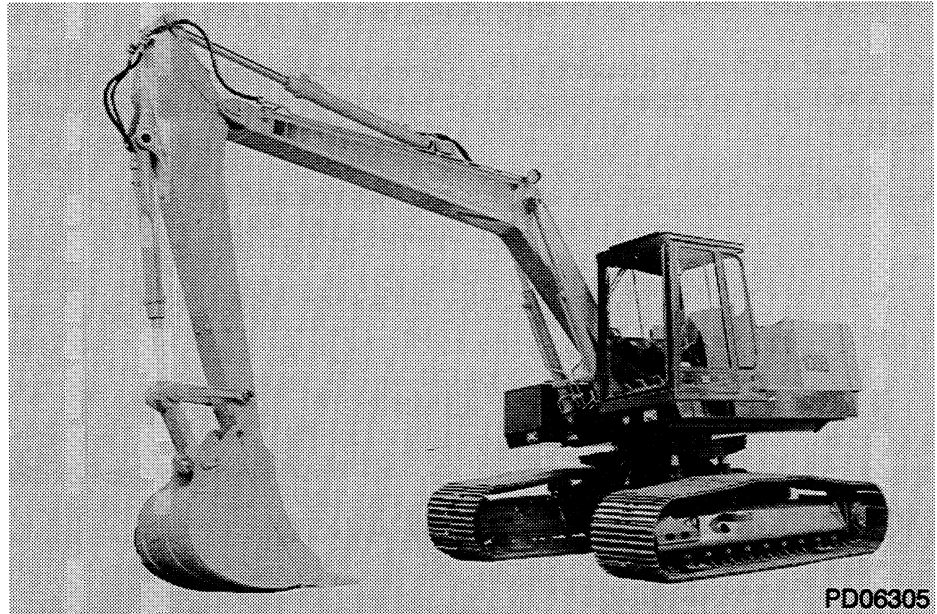
Your Authorized Case Dealer

MODEL 1088 LONG TRACK EXCAVATOR



TO THE OWNER _____

**MODEL 1088 LONG TRACK EXCAVATOR
With Turntable Leveler**



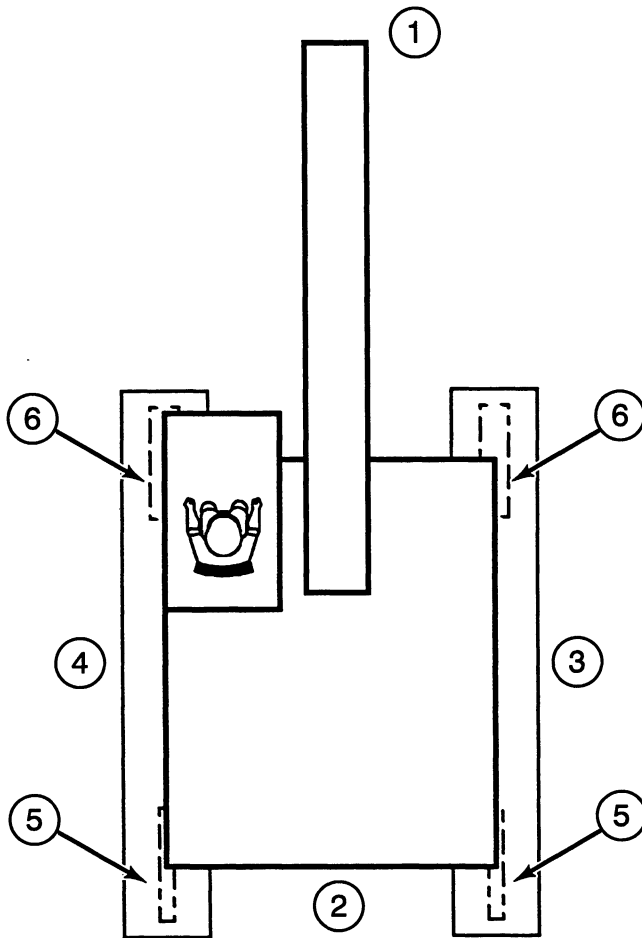
TO THE OWNER _____

RIGHT, LEFT, FRONT AND REAR OF THE MACHINE

Right, left, front and rear, when used in this manual, indicate the sides of the machine as seen from the operators seat with the cab over the idler wheels.

The following illustration shows the machine in the normal TRAVEL and WORKING position.

The normal TRAVEL and WORKING position is with the cab over the idler wheels. The drive sprockets are at the rear of the turntable.

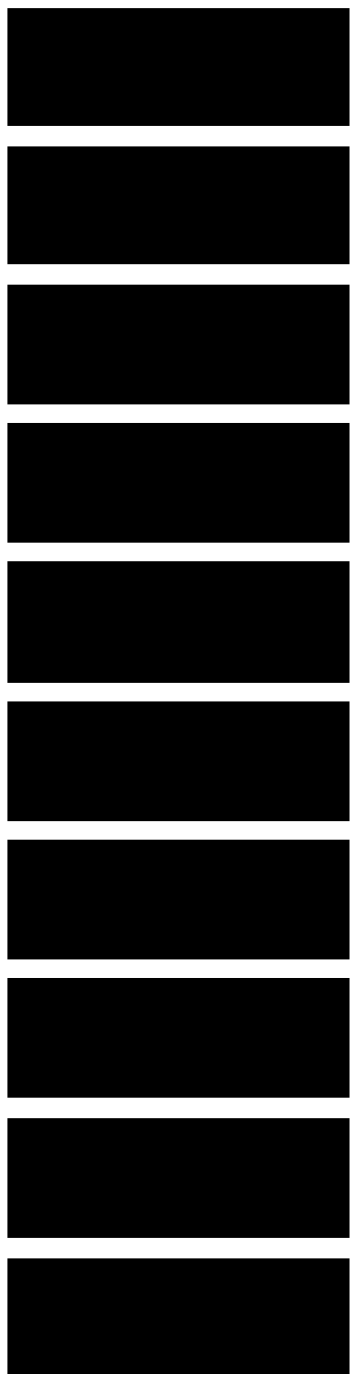


830634

- | | |
|--------------------|-------------------|
| 1. FRONT | 4. LEFT HAND SIDE |
| 2. REAR | 5. DRIVE SPROCKET |
| 3. RIGHT HAND SIDE | 6. IDLER WHEEL |

GENERAL TABLE OF CONTENTS

Identification Numbers	6
Safety/Decals/Hand Signals.....	7
Specifications	21
Instruments/Controls	31
Operating Instructions.....	45
Job Site Operation	71
Tracks.....	79
Lubrication/Maintenance Chart	83
Lubrication/Filters/Fluids	87
Maintenance/Adjustments.....	121
Electrical System.....	129
Storage.....	139



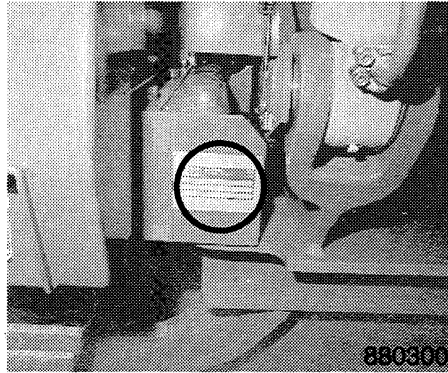
IDENTIFICATION NUMBERS _____

PRODUCT IDENTIFICATION AND SERIAL NUMBERS

When ordering parts or when requesting information or assistance always give the identification numbers of your machine.

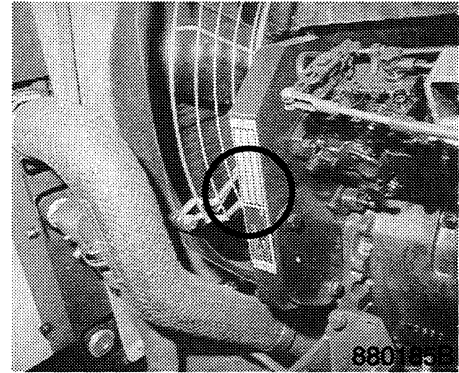
Write the model and serial numbers of your machine on the lines below.

MODEL/PIN NUMBERS



Model Number _____
Pin Number _____

ENGINE



Serial Number _____

SAFETY/DECALS/HAND SIGNALS _____

SECTIONAL INDEX

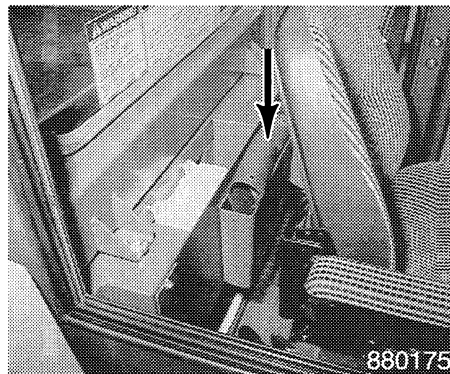
Decals	12 - 15
Hand signals	16 - 19
Safety.....	8 - 11



SAFETY

Your safety and safety of persons in the area depend on you. It is your responsibility to understand this operators manual for the correct operation, inspection, lubrication, and maintenance of this machine.

Know the positions and operation of each control before you start. **MAKE SURE YOU CHECK ALL CONTROLS IN A SAFE, CLEAR AREA BEFORE YOU START WORKING.**



MANUAL STORAGE

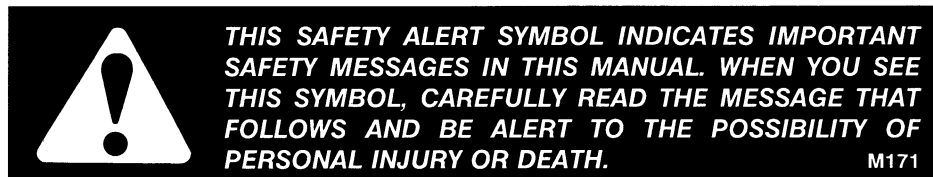
READ THIS MANUAL COMPLETELY and make sure you understand the characteristics of speed, stability, brakes, and steering, of this machine. If you have any questions, see your dealer.

Do not remove this manual from the machine. See your dealer for additional manuals.

The safety provisions applicable to individual or public contracts, regardless of the job concerned (earthmoving, handling, boring, etc.) are those which comply with safety regulations prevailing in the country and in the field.

When working on a public highway, use the standard traffic signs and take into consideration the working area of the upperstructure and attachments. Local regulations stipulate the number, type and location of panels and reflectors.

The information given in this chapter is a summary of basic rules to be observed at all times and does not free the user from the obligation to abide by the legal provisions outlined above.



IMPORTANT: *Safety messages in this section point out situations which can be encountered during the normal operation and maintenance of your machine. These safety messages also give possible ways of dealing with these conditions.*

Additional safety messages are used in the text of the manual to show specific safety hazards.

 **Machine Operation** 

Check all controls in a clear area and make sure the machine is operating correctly.

Do not allow another person to ride on the machine. This other person can fall or can cause an accident.

Be careful when driving the excavator; the working area contains zones of poor visibility.

Ask the assistance of a signalman for all work where the operator does not have full visibility.

Get to know the possibilities and limitations of the excavator, also the working space required for the machine. Accidents can be prevented if the operator is careful.

Do not work near a live overhead electric cable without first making certain you have taken steps to observe the minimum distances.

Less than 57 000 volts 10 ft (3 m)

More than 57 000 volts 16 ft (5 m)

If this machine rolls over you can be injured or killed. You must make a judgement if weather, road, or earth conditions will permit safe operation on a hill, ramp, or rough ground.

Stay away from hazardous areas such as ditches, overhangs, etc. Walk around the work area before you start and look for hazards.

The operator must be alone on the machine.

Check to see that there is nobody beneath or on the excavator.

Do not allow someone to stand in the working area of the excavator.

An accident can be caused if the operator unintentionally actuates the swing or an attachment control. Stop all movements until the person has moved away.

Use the controls gradually for smooth operation.

Under no circumstances must the attachment be swept along the ground to spread out spoil or push objects (universal stresses on attachment).

 **Parking the Excavator** 

After parking your machine and before you leave the working area, align the attachment with the centreline of the machine and lower the boom until the bucket is resting on the ground.

Stop the engine, even during short stops. Follow the instructions of this manual with regard to parking your excavator.

SAFETY/DECALS/HAND SIGNALS

 Fire or Explosion Prevention 

Engine fuel can cause an explosion or fire. Do not fill the fuel tank with the engine running, if you are near an open fire, or if you are welding, smoking, etc. Use a non-flammable cleaning solvent to clean parts.

Sparks or flame can cause the hydrogen gas in a battery to explode. To prevent an explosion, do the following :

1. When disconnecting the battery cables, disconnect the negative (-) cable first. When connecting the battery cables, connect the negative (-) cable last.
2. When connecting jumper cables to start the engine, use the procedure shown in this manual.
3. Do not short circuit the battery posts with a metal item.
4. Do not weld, grind, or smoke near a battery.

Sparks from the electrical system or engine exhaust can cause a fire or an explosion. Before you operate this machine in an area with flammable dust or vapors, use good ventilation to remove all flammable dust or vapors.

A fire can cause injury or death. Always have a fire extinguisher near the machine. Make sure the fire extinguisher is serviced according to manufacturers instructions.

Remove all trash or debris from the machine. Make sure that oily rags or other flammable materials are not stored on the machine.

Check for fuel, oil and hydraulic fluid leaks. Replace worn or damaged hoses/lines. After repairs are made, clean the machine before you operate.

 Burn Prevention 

Battery acid causes severe burns. Batteries contain sulfuric acid. Avoid contact with skin, eyes or clothing.

Antidote – EXTERNAL : flush with water. INTERNAL : drink large quantities of water or milk. Follow with milk of magnesia, beaten egg or vegetable oil. Call a doctor immediately. EYES : flush with water for 15 minutes and get prompt medical attention.

When the battery electrolyte is frozen, the battery can explode if :

- (1) You try to charge the battery.
- (2) You try to jump start and run the engine.

To prevent the battery electrolyte from freezing, try to keep the battery at full charge. If you do not follow these instructions, you or others in the area can be injured.

Hot coolant can spray out if the radiator cap is removed. To remove the radiator cap, let the cooling system cool, turn the cap to the first notch, then wait until the pressure is released.