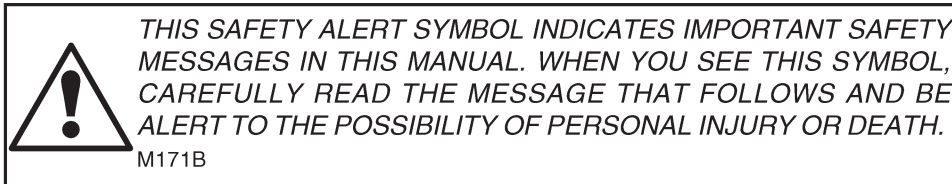


# 850H Crawler

## Operator's Manual

6-21940

The CASE logo is located in the bottom right corner of the page. It consists of the word "CASE" in a bold, italicized, sans-serif font, with a horizontal line underneath the letters.



Safety Decals on this machine use the words **Danger, Warning or Caution**, which are defined as follows:

- **DANGER:** Indicates an immediate hazardous situation which, if not avoided, will result in death or serious injury. The color associated with Danger is RED.
- **WARNING:** Indicates a potentially hazardous situation which, if not avoided will result in serious injury. The color associated with Warning is ORANGE.
- **CAUTION:** Indicates a potentially hazardous situation which, if not avoided, may result in minor or moderate injury. It may also be used to alert against unsafe practices. The color associated with Caution is YELLOW.



# WARNING

IMPROPER OPERATION OF THIS MACHINE CAN CAUSE INJURY OR DEATH. BEFORE USING THIS MACHINE, MAKE CERTAIN THAT EVERY OPERATOR:

- Is instructed in safe and proper use of the machine.
- Reads and understands the Manual(s) pertaining to the machine.
- Reads and understands ALL Safety Decals on the machine.
- Clears the area of other persons.
- Learns and practices safe use of machine controls in a safe, clear area before operating this machine on a job site.

It is your responsibility to observe pertinent laws and regulations and follow Case Corporation instructions on machine operation and maintenance.

## TABLE OF CONTENTS

<b>TO THE OWNER</b> .....	<b>1</b>
REGULATIONS .....	2
AFTER DELIVERY CHECK .....	2
RIGHT, LEFT, FRONT AND REAR SIDES OF THE MACHINE .....	3
IDENTIFICATION NUMBERS .....	4
MACHINE COMPONENTS .....	6
MACHINE COMPONENTS .....	7
<b>SAFETY/DECALS/HAND SIGNALS</b> .....	<b>9</b>
SAFETY RULES .....	9
UTILITY SAFETY .....	10
BEFORE OPERATION .....	11
MACHINE OPERATION .....	12
PARKING THE MACHINE .....	13
FIRE EXTINGUISHER .....	13
BURN PREVENTION .....	14
HAZARDOUS CHEMICALS .....	14
FIRE OR EXPLOSION PREVENTION .....	15
MAINTENANCE .....	16
DUCTILE IRON .....	16
SAFETY DECALS .....	17
HAND SIGNALS .....	23
<b>INSTRUMENTS/CONTROLS</b> .....	<b>27</b>
INSTRUMENT PANEL .....	27
INSTRUMENT PANEL .....	28
INSTRUMENT PANEL .....	29
INSTRUMENT PANEL .....	30
INSTRUMENT PANEL .....	31
INSTRUMENT PANEL .....	32
INSTRUMENT PANEL .....	33
INSTRUMENT PANEL .....	34
TRANSMISSION CONTROLS, ENGINE HAND THROTTLE AND HORN BUTTON .....	35
TRANSMISSION CONTROLS, ENGINE HAND THROTTLE AND HORN BUTTON .....	36
TRANSMISSION CONTROLS, ENGINE HAND THROTTLE AND HORN BUTTON .....	37
OPTIONAL TRANSMISSION CONTROLS .....	38
BACK-UP ALARM .....	38
FOOT THROTTLE, STEERING AND BRAKE PEDAL .....	39
DECELERATOR .....	40
DOZER BLADE CONTROL LEVER .....	41

## OPERATING INSTRUCTIONS

---

DOZER BLADE CONTROL LEVER .....	42
CONTROL HANDLE POSITIONS .....	43
RIPPER CONTROL LEVER .....	44
CAB CONTROLS .....	45
BATTERY DISCONNECT SWITCH .....	48
OPERATORS SEAT .....	49
OPERATORS SEAT BELT .....	51
<b>OPERATING INSTRUCTIONS .....</b>	<b>53</b>
RUN-IN PERIOD OF A NEW MACHINE .....	53
ENGINE OPERATION .....	54
CRAWLER OPERATION .....	57
TOWING A DISABLED CRAWLER .....	62
TRANSPORTING THE MACHINE .....	64
OPERATING IN HOT WEATHER .....	65
OPERATING IN COLD WEATHER .....	65
DOZER OPERATION .....	70
RIPPER OPERATING TIPS .....	76
TRACK SYSTEMS .....	77
VANDAL LOCKUP .....	92
BLADE LIFT EYE .....	92
<b>LUBRICATON/FILTERS/FLUIDS .....</b>	<b>93</b>
GENERAL SAFETY BEFORE YOU SERVICE .....	93
SYSTEMGARD LUBRICATION ANALYSIS PROGRAM .....	94
ENGINE HOURMETER .....	95
Fluids and Lubricants .....	96
LUBRICATION/MAINTENANCE CHART .....	97
LUBRICATION/MAINTENANCE CHART .....	98
GREASE FITTINGS .....	99
ACCESS DOORS .....	101
ENGINE LUBRICATION .....	102
ENGINE SERVICE .....	103
AIR FILTER SYSTEM .....	106
ENGINE COOLING SYSTEM .....	110
DIESEL FUEL SYSTEM .....	113
HYDRAULIC SYSTEM .....	118
TRANSMISSION .....	121
FINAL DRIVES .....	125
<b>MAINTENANCE/ADJUSTMENTS .....</b>	<b>127</b>
ETHER STARTING FLUID .....	127
TRANSMISSION CONTROL LEVER ADJUSTMENT .....	128
REVERSIBLE FAN POSITIONS (If Equipped) .....	129
AIR CONDITIONER DRIVE BELT .....	130
ROLL-OVER PROTECTIVE STRUCTURE .....	131

OPERATING INSTRUCTIONS

---

BRAKE WEAR CHECK .....	134
MACHINE CLEANING .....	134
<b>ELECTRICAL SYSTEM .....</b>	<b>135</b>
BATTERY SERVICE .....	135
WORK LAMPS .....	136
ALTERNATOR WARNING LAMP .....	137
FUSES .....	138
ACCESSORY OUTLET .....	138
BATTERY DISCONNECT SWITCH .....	139
<b>STORAGE .....</b>	<b>141</b>
MACHINE STORAGE .....	141
REMOVAL FROM STORAGE .....	142
<b>SPECIFICATIONS .....</b>	<b>143</b>
ENGINE SPECIFICATIONS .....	143
TRAVEL SPEEDS .....	144
HYDRAULIC SYSTEM .....	144
TRACK SYSTEM .....	145
OPERATING DATA AND DIMENSIONS -	
LONG TRACK (LT) .....	146
OPERATING DATA AND DIMENSIONS - WIDE TRACK (WT) OR LOW	
GROUND PRESSURE (LGP) CRAWLERS .....	148
OPERATING DATA AND DIMENSIONS - RIPPER .....	149
WEIGHTS .....	150
AFTER DELIVERY CHECK .....	161
AFTER DELIVERY CHECK .....	163

**NOTES**

# TO THE OWNER



BD99K155

This manual contains important information about the safe operation, adjustment and maintenance of your Case Crawler. Refer to the Detail Index at the end of this manual for locating specific items about your machine. The Crawler conforms to current safety regulations.

Use this manual as a guide. Your Crawler will remain a reliable working tool as long as it is kept in good working condition and serviced properly.

Do Not operate or permit anyone to operate or service this machine until you or the other persons have read and understand the safety, operation and maintenance instructions in this manual. Use only trained operators who have demonstrated the ability to operate and service this machine correctly and safely.

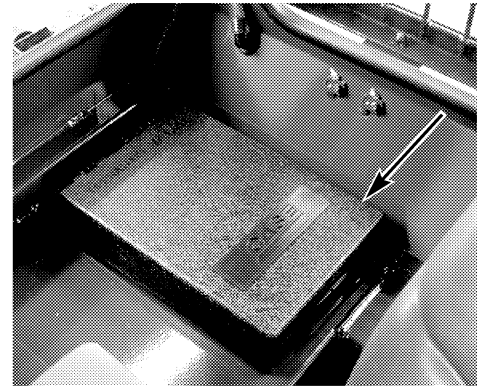
This Crawler, with standard equipment and authorized attachments, is intended to be used for above ground material handling. This machine is not intended to be used for towing other equipment or transporting loads at high speeds.

Do Not use this machine for any application or purpose other than those described in this manual. Consult an authorized dealer of the Case Corporation on changes, additions or modifications that can be required for this machine to comply with various country regulations and safety requirements. Unauthorized modifications will cause serious injury or death. Anyone making such unauthorized modifications is responsible for the consequences.

## TO THE OWNER

---

This Operators Manual is to be stored in the manual compartment equipped on this machine. Make sure this manual is complete and in good condition. Contact your dealer to obtain additional manuals. Contact your dealer for any further information or assistance about your machine. Your dealer has Case Corporation approved service parts. Your dealer has technicians with special training that know the best methods of repair and maintenance for your Crawler.



BD99K126

**NOTE:** *The operators manual storage box shown is in a cab machine, the operators manual storage box on a ROPS machine is located below the blade control lever.*

## REGULATIONS

Local, state and national laws may regulate the disposal of various service fluids used in this equipment, such as but not limited to oils, hydraulic, battery and transmission fluids. You should be aware of and comply with any pertinent regulations in order to insure safe and proper handling and disposal of any regulated fluids.

## AFTER DELIVERY CHECK

Two copies of the After Delivery Check are in the back of this manual. One copy is for you and one copy is for the dealer. Make sure that your dealer does the After Delivery Check after the first 20 hours of machine operation.

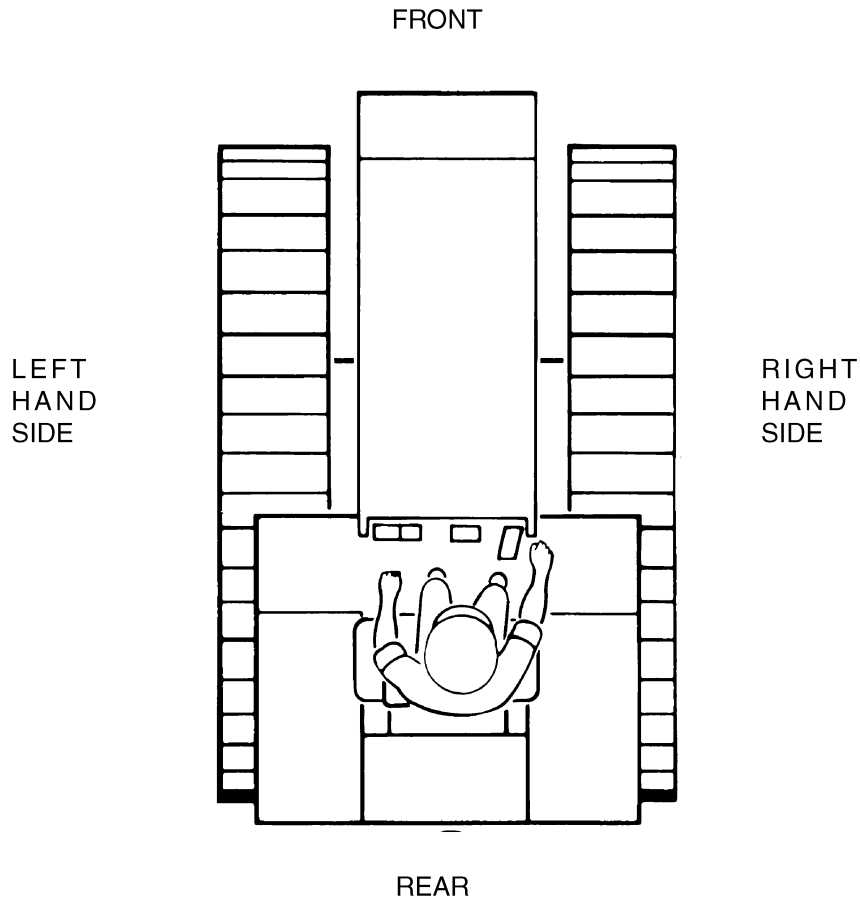
**NOTE:** *Your cost for this check will be for filters, oil, or other accessories. If the dealer comes to your machine, there can also be a cost for the time and distance.*



## RIGHT, LEFT, FRONT AND REAR SIDES OF THE MACHINE

Right-hand and left-hand, when used in this manual, indicate the right and left sides of the machine as seen from the operators seat.

### Basic Machine, Dozer and Ripper



B830800J

TO THE OWNER

---

## IDENTIFICATION NUMBERS

Write your machine model number, Product Identification Number (P.I.N.) and serial numbers on the lines provided below. If needed, give these numbers to your dealer when you need parts or information for your machine.

Make a record of the numbers. Keep the record and your Manufacturer's Statement of Origin in a safe place. If the machine is stolen, report the numbers to your local law enforcement agency.

MACHINE MODEL NUMBER

---

PRODUCT IDENTIFICATION NUMBER

---

ENGINE SERIAL NUMBER

---

TRANSMISSION SERIAL NUMBER

---

TORQUE CONVERTER SERIAL NUMBER

---

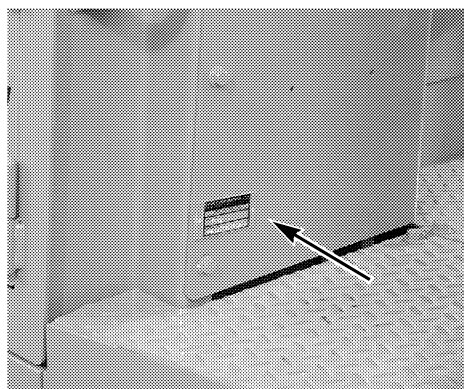
ROPS CANOPY SERIAL NUMBER

---

OTHER

---

### Product Identification Number (P.I.N.)



### Engine

