

**450B/455B
Crawler**

Operators Manual

9-6403



Reprinted



This symbol means ATTENTION! BECOME ALERT! YOUR SAFETY IS INVOLVED. The message that follows the symbol contains important information about your safety. Carefully read the message. Make sure you fully understand the causes of possible injury or death.

SB001

IF THIS MACHINE IS USED BY AN EMPLOYEE, IS LOANED, OR IS RENTED, MAKE SURE THAT THE OPERATOR UNDERSTANDS THE TWO INSTRUCTIONS BELOW.

BEFORE THE OPERATOR STARTS THE ENGINE:

1. GIVE INSTRUCTIONS TO THE OPERATOR ON SAFE AND CORRECT USE OF THE MACHINE.
2. MAKE SURE THE OPERATOR READS AND UNDERSTANDS THE OPERATOR'S MANUAL FOR THIS MACHINE.



IMPROPER OPERATION OF THIS MACHINE CAN CAUSE INJURY OR DEATH.

BEFORE STARTING THE ENGINE, DO THE FOLLOWING:

1. READ THE OPERATOR'S MANUAL.
2. READ ALL SAFETY DECALS ON THE MACHINE.
3. CLEAR THE AREA OF OTHER PERSONS.

LEARN AND PRACTICE SAFE USE OF MACHINE CONTROLS IN A SAFE, CLEAR AREA BEFORE YOU OPERATE THIS MACHINE ON A JOB SITE.

It is your responsibility to observe pertinent laws and regulations and to follow manufacturer's instructions on machine operation and maintenance.

See your Authorized Case dealer for additional operator's manuals, parts catalogs, and service manuals.

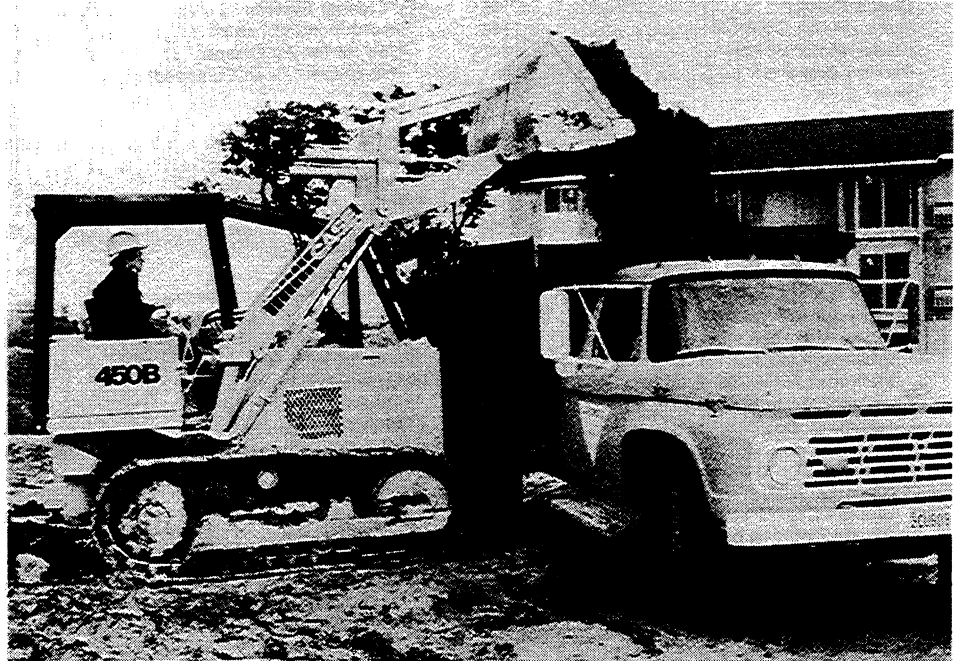
TABLE OF CONTENTS

Introduction	2	Maintenance Chart for the First Period of Operation With a New Machine	111
Safety	4	Maintenance Chart for Regular Intervals	111
Roll-Over Protective Structure	23	Safety Before Servicing	113
Location of PIN Number and Serial Numbers	29	Grease Fittings	116
Specifications	30	Engine Lubrication System	122
Instructions for Operation of the Machine	40	Oil Level	122
Instruments and Controls (Fast Reference)	40	Oil Change	122
Instrument Panel	42	Engine Oil Filter	124
Foot Pedals	44	Air Cleaner System	125
Clutch Cutout	45	Restriction Indicator	125
Transmission Controls	46	Cap for the Air Cleaner	125
Starter Motor Button	47	Pre-Cleaner (If so Equipped)	126
Parking Brake	47	Dust Valve	126
Seat	48	Filter Service	127
Seat Belts	49	Engine Cooling System	131
Loader Controls	51	Coolant Level	131
Dozer Controls	55	Ethylene Glycol Coolant	131
Ripper Control	56	Water Coolant	132
Winch Control	57	Procedure to Clean the Cooling System	132
Backhoe Controls	58	Fuel System	134
Engine Operation	59	Fuel Tank	134
First Period of Operation With a New Engine	59	Cleaning the Fuel System	136
Service and Checks Before You Start	60	Replacing the Fuel Filters	137
Procedure to Start the Engine	61	Removing Air From the Fuel System	138
Engine Speed	62	Electrical System	139
Procedure to Stop the Engine	62	Instrument Panel Light	139
Methods to Help Start the Engine	63	Headlight	140
Crawler Operation	68	Rear Floodlight	141
Adjusting the Seat	68	Alternator Charging System	142
Starting	68	Battery Maintenance	143
Transmission Controls	69	Booster Battery	147
Steering	69	Hydraulic System	148
Stopping the Crawler	72	Oil Level	149
When Operating on a Hill	73	Filter for the Return Line	150
Procedure to Move a Disabled Crawler	73	Screen for the Suction Line	151
Procedure to Transport the Machine	74	Relief Valve and Check Valve for the Hydraulic Reservoir	152
Operating in Cold Temperatures	76	Oil Change	152
Operating in Hot Temperatures	76	Transmission Hydraulic System	154
Loader Operation	77	Oil Level	154
Safety When You Operate	77	Filter for the Pressure Line	154
Clutch Cutout	78	Screen for the Suction Line	156
Engine Speed and Transmission Range Control	78	Breather	158
Preparation for the Job	79	Oil Change	158
Loose Material	79	Final Drives	160
Flat Ground	80	Oil Level	160
Procedure to Move Material	80	Oil Change	160
Procedure to Dump the Bucket Onto a Stockpile	80	Track System	161
Procedure to Dump the Bucket into a Truck	81	Brake System	163
Return-To-Dig	81	Brake Master Cylinders	163
Dozer Operation	82	Brake Adjustment	166
Safety When You Work	82	Adjustment of Parking Brake	167
Blade Depth Pads	83	Drive Belt	170
Engine Speed and Transmission Range Control	83	Loader Service	172
Digging	84	Return-To-Dig Adjustment	172
Making a Stockpile Level	84	Anti-Rollback Adjustment	174
Filling Trenches	85	Bucket Teeth	175
Ripper Operation	85	Dozer Service	178
Winch Operation	86	Ripper Service	178
Backhoe Operation	91	Winch Maintenance	179
Fuels and Lubricants	108	Fluid Level	179
Diesel Fuel	108	Oil Change	180
Fuel, Fluids and Lubricants Chart	109	Maintenance of the Seat Belt	183
Maintenance and Lubrication	110	Spark Arrester Muffler	183
Introduction	110	Procedure to Put the Machine in Storage	184
		After Delivery Check of a New Machine	187

INTRODUCTION

TO THE OWNER

This manual is your guide to safe, efficient operation. Before you operate this machine, read this manual.



790091

If you need more information, call us.

Your Case Dealer

The Case Company can make changes in design or specifications of the machine at any time with no obligation for these changes.

DELIVERY OF THE MACHINE

When you get your new machine from your Case dealer, you will be told about correct operation and maintenance as shown in the Owner Warranty Registration form. When your Case dealer has given you these instructions, you must write your name on the report. Then your dealer will give you a copy for your records.

AFTER DELIVERY CHECK

Three copies of the After Delivery Check are in the back of this manual. One copy is for you, one copy is for the dealer and one copy is for the Construction Equipment Service Department. Make sure that your Case dealer does the After Delivery Check after the first 20 hours of machine operation.

NOTE: Your cost for this inspection will be for filters, oil or other accessories. If the dealer comes to your machine, there can also be a cost for the time and distance.

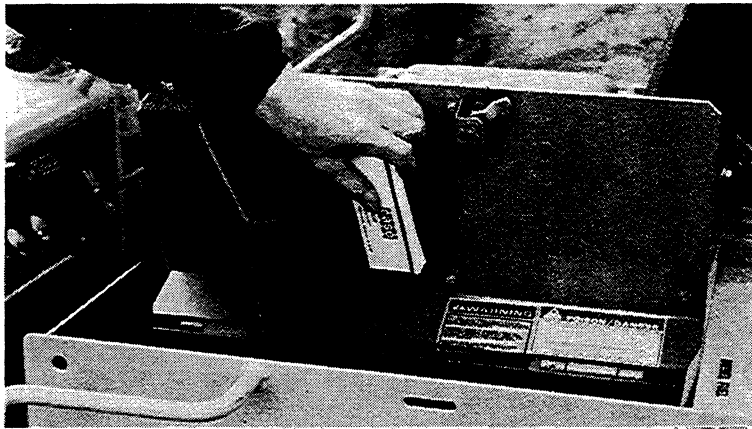
RIGHT AND LEFT SIDES OF THE MACHINE

“Right and Left”, when used in this manual, represent the right and left sides of the machine as seen from the operator’s seat.

SAFETY

SAFETY RULES

Your safety and the safety of other persons in the work area are the result of your correct operation of this machine. Know the location, positions and functions of all the controls. **MAKE SURE YOU CHECK ALL CONTROLS IN A SAFE, CLEAR AREA BEFORE YOU OPERATE THE MACHINE.**



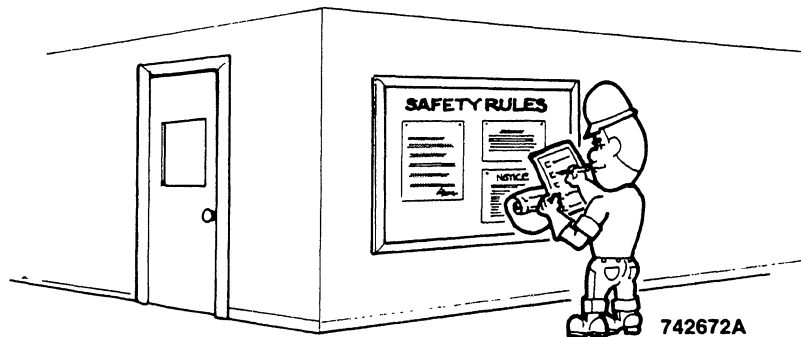
Manual Storage Box

786630

READ THIS MANUAL COMPLETELY and make sure you understand the contents. Make sure you understand, for example, the characteristics of speed, stability, brakes and steering, of this machine. If you have any questions, call your Case dealer.

The safety information in this manual does not replace any other rules or laws for safety that are used in your area. Learn the rules or laws for safety that are used in your area. Make sure that your machine has the correct equipment according to these rules or laws.

It is recommended that you make copies of the safety rules in this manual and put the copies in the work area.



742672A

Before You Start the Engine

WARNING: Before starting engine, study operator's manual safety messages. Read all safety signs on machine. Clear the area of other persons. Learn and practice safe use of controls before operating.



It is your responsibility to understand and follow manufacturer's instructions on machine operation, service, and to observe pertinent laws and regulations. Operator and service manuals may be obtained from your equipment dealer.

D-34-2-A

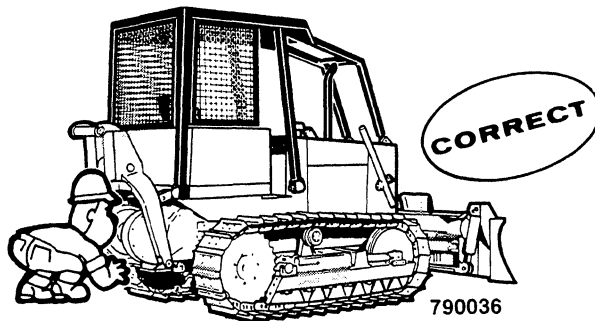
IMPORTANT: Always install new decals if the old decals cannot be read. When parts that have decals are replaced, make sure to install new decals with the new part. You can get new decals from your Case dealer.

46-48-A

WARNING: Before operation, check the machine for leaks and for parts that are damaged or not in good condition. Make sure that all caps, dipsticks, battery covers, etc., are tight. Failure of a part during operation can cause an injury.



25-10-A

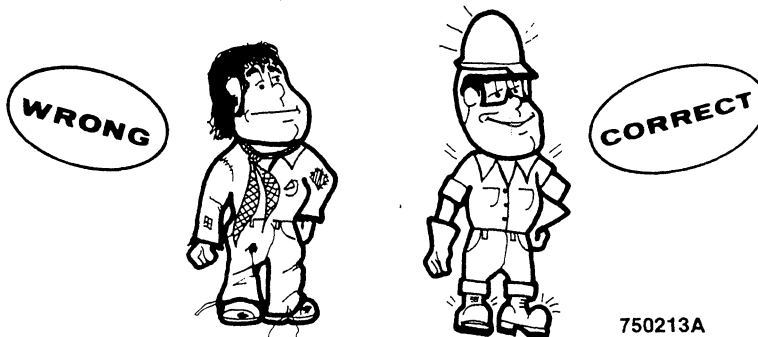


790036

WARNING: Wear the correct safety equipment. Do not wear loose clothing. If it is needed, get extra safety equipment. Extra safety equipment which can be needed includes hard hat, safety shoes, ear protection, reflector clothing, safety goggles and heavy gloves.



1-3-A



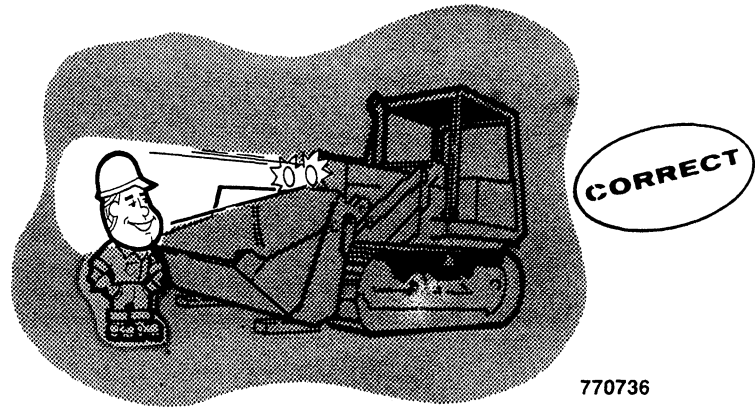
750213A



WARNING: Do not have a burning cigarette, cigar, etc., when you use starting fluid. Never make a hole in the starting fluid container. Do not use starting fluid near an open flame or put the starting fluid container into a fire. Use only small amounts of starting fluid. Never put starting fluid in storage in a hot area. 1-10-A



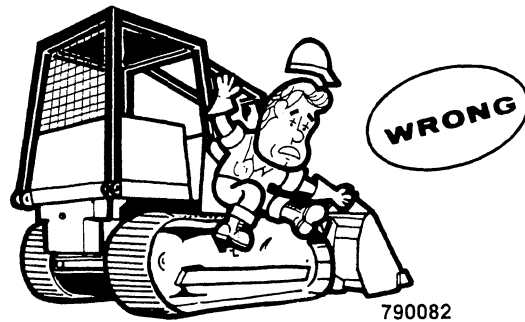
CAUTION: Before you operate at night, check that all lights (if the machine is so equipped) are working correctly. 25-7-A



770736



WARNING: Make sure the operator's area, steps and grab rails are clear of oil, foreign material or ice. Remove or fasten all maintenance or personal items. Failure to keep these areas clean can cause a bad accident. 25-8-A



790082



WARNING: BE VERY CAREFUL IF THIS IS NOT THE MACHINE YOU NORMALLY OPERATE. 2-2-B



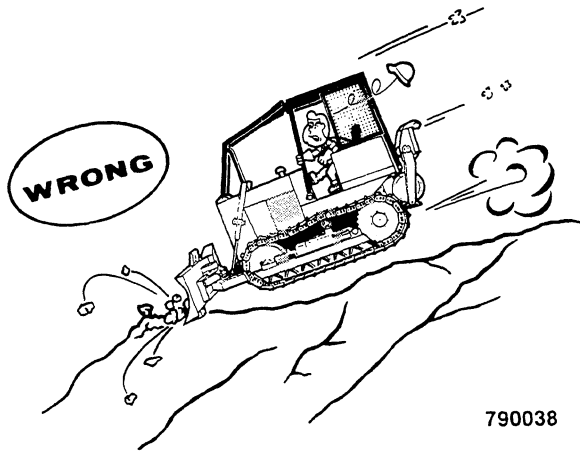
WARNING: Keep a good fire extinguisher and a first aid kit with you at all times. Know how to use both of these items. 25-9-A



742673



WARNING: To jump start this machine, connect positive jumper cable to positive battery terminal and connect negative jumper cable to good engine ground. Start engine only when seated in operator's seat with seat belt fastened. Stop engine before leaving machine. Disconnect jumper cables. Any other method could result in uncontrolled machine movement. 47-85



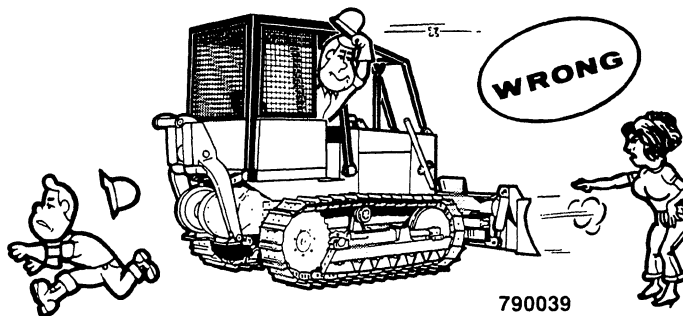
790038



WARNING: Before each period of operation, check the machine for correct function of the steering controls, brake controls, hydraulic controls, instruments, and safety equipment. Check the Neutral position of the transmission control levers. A machine that runs correctly can prevent accidents. Make all necessary repairs or adjustments before you operate the machine. 26-4-C



CAUTION: Make sure all persons are away from the machine before you start the engine. 47-63



WARNING: Do the required maintenance and safety checks to the machine before you start each day. A machine that has not been given correct maintenance can cause an accident. 47-54



WARNING: Operate controls only from seat with seat belt fastened.

Lock transmission controls in neutral and apply parking brake before starting engine and before leaving operator's seat.

Lower or block elevated components before servicing and when leaving the machine. D-47-8