

SRI30 SR200

SRI50 SR220

SRI75 SR250

SVI85 SV250

SV300

Alpha Series Skid Steer Loader

TR270

TR320

TV380

Alpha Series Compact Track Loader

OPERATOR'S MANUAL

Part number 84571609

4th edition English

December 2011

Replaces part number 84533037



Contents

1 GENERAL INFORMATION

Note to the Owner	1-1
Right, left, front and rear of the machine	1-3
Identification numbers	1-4
Machine components	1-7

2 SAFETY INFORMATION

Signal word definitions	2-1
Safety rules	2-2
Decal information	2-3
Safety decals	2-4
Utility safety	2-11
Operator precautions	2-12
Proper entry and exit	2-13
Starting and stopping precautions	2-14
Seat belt precautions	2-15
Specific precautions to this machine	2-16
Operating precautions	2-17
Maintenance precautions	2-19
Fuel handling precautions	2-21
Burn prevention	2-21
Fire extinguisher	2-22
California proposition 65 warning	2-22
Hazardous chemicals	2-22
Transporting precautions	2-23
Electro-Magnetic Compatibility (EMC)	2-23
Roll Over Protective Structure (ROPS)	2-24
Welding on the machine	2-25
Mechanical lift arm lock procedure - radial lift machines	2-26
Mechanical lift arm lock procedure - vertical lift machines	2-27
No engine power - lift arm down control	2-28
Emergency exit	2-29

3 CONTROLS/INSTRUMENTS

ACCESS TO OPERATOR'S PLATFORM

Door latches, cab	3-1
Window glass, cab	3-2
Windshield wiper and washer controls	3-2
Cab air louvers	3-3

OPERATOR'S SEAT

Standard seat	3-4
Mechanical suspension seat	3-4
Air seat	3-4
Seat belt	3-5

MECHANICAL HYDRAULIC CONTROLS

Steering and travel	3-6
Moving the machine	3-6
Turning the machine	3-7
Lift arm and bucket controls	3-8
Hand controls	3-8
Foot pedals	3-9

ELECTRO HYDRAULIC CONTROLS

Control pattern overview	3-10
Standard H control pattern	3-10
Standard ISO control pattern	3-11
H control pattern steering and travel	3-12
Left hand control lever	3-12
Right hand control lever	3-12
Moving the machine	3-13
Turning the machine	3-14
H control pattern lift arm and bucket controls	3-15
Lift arm raise/lower control	3-15
Bucket curl/dump control	3-16
ISO control pattern steering and travel	3-17
Moving the machine	3-17
Turning the machine	3-18
Lift arm and bucket controls	3-20

CONTROL HANDLES

Switch configurations	3-21
Two speed function	3-26

AUXILIARY HYDRAULICS

Standard auxiliary hydraulics	3-27
High flow auxiliary hydraulics	3-28
Enhanced high flow auxiliary hydraulics	3-29

INSTRUMENT CLUSTER

Electronic instrument cluster (EIC)	3-30
Advanced instrument cluster (AIC)	3-35
Instrument cluster	3-40
Left column switch identification	3-52
ISO or H pattern control switch	3-54
Machine lights	3-54
Telematics	3-54

4 OPERATING INSTRUCTIONS COMMISSIONING THE UNIT

Operating Instructions	4-1
STARTING THE UNIT	
Engine operation	4-3
Throttle	4-5
STOPPING THE UNIT	
Parking the machine and stopping the engine	4-6
Operating in extreme temperatures	4-7
Booster battery procedure.....	4-8
MOVING THE UNIT	
Machine operation.....	4-9
5 TRANSPORT OPERATIONS	
SHIPPING TRANSPORT	
Transporting the machine	5-1
RECOVERY TRANSPORT	
Moving a disabled machine	5-5
6 WORKING OPERATIONS	
GENERAL INFORMATION	
Mechanical attachment mounting systems.....	6-1
Hydraulic attachment mounting systems.....	6-4
Field operation.....	6-6
7 MAINTENANCE	
GENERAL INFORMATION	
General safety before you service.....	7-1
Lubrication analysis program	7-3
Plastic and resin parts	7-3
Ecology and the environment	7-3
Tilting operator's compartment forward.....	7-4
Machine cleaning	7-8
Window removal and cleaning	7-9
Cab door removal and installation.....	7-11
Battery safety - check and cleaning	7-12
Fire extinguisher.....	7-14
Biodiesel fuel	7-15
Engine hourmeter	7-16
Wheels and tires.....	7-17

Fluids and lubricants	7-19
Lubrication and maintenance access.....	7-20
Fuses and relays	7-23

MAINTENANCE CHART

Maintenance Chart	7-25
-------------------------	------

Maintenance procedures

Clean tracks and components.....	7-26
Engine and hydraulic coolers.....	7-27
Engine coolant reservoir level check	7-27
Engine oil	7-28
Lift arm, pivot points, coupler pins and cylinder pins	7-29
Hydraulic system	7-30
Seat belt, lap bar and seat interlock operation check	7-32
Alternator and air conditioning compressor (if equipped) belt tension	7-33
Cab intake filter	7-34
Roll Over Protective Structure (ROPS) mechanism and hardware check	7-35
Engine oil and filter	7-35
Final drive - Drain fluid	7-37
Radiator coolant level check	7-38
Fuel filter.....	7-39
In line fuel filter	7-39
Drive chain tension check	7-40
Primary fuel filter	7-41
Hydraulic oil filter	7-42
Final drive chain tank oil.....	7-43
Air cleaner elements	7-43
Hardware - loose or damaged.....	7-45
Hydraulic fluid	7-45
Radiator drain and flush	7-45
Final drive chain tank oil.....	7-47

STORAGE

Storing the machine	7-48
---------------------------	------

8 TROUBLESHOOTING

FAULT CODE RESOLUTION

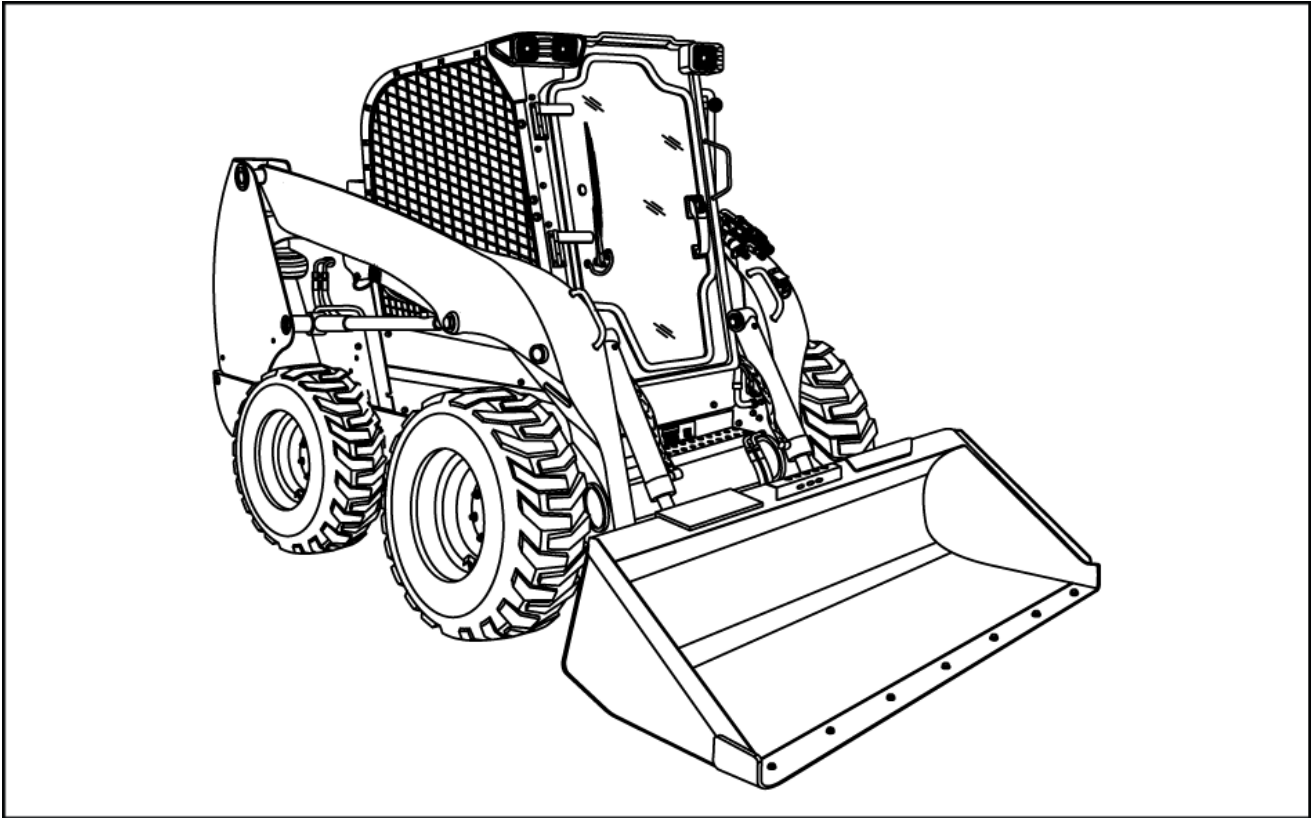
Error code index	8-1
------------------------	-----

9 SPECIFICATIONS

General specification	9-1
Material weights	9-23
Torque charts - Minimum tightening torques for normal assembly	9-24
Units of measure and conversion	9-29

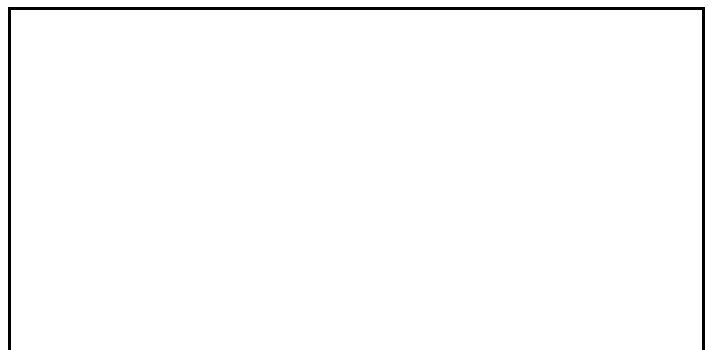
1 - GENERAL INFORMATION

Note to the Owner



93106834 1

CNH AMERICA LLC
P.O. Box 9228
Wichita, Kansas
U.S.A
67277



DEALER'S STAMP OR CARD

This manual contains important information about the safe operation, adjustment and maintenance of your skid steer. Refer to the detailed INDEX at the end of this manual for locating specific items about your machine. The skid steer conforms to current safety regulations.

Use this manual as a guide. Your skid steer will remain a reliable working tool as long as it is kept in good working condition and serviced properly.

This skid steer, with standard equipment and authorized attachments, is intended for above ground material handling. Use only approved accessories and attachments designed for your machine.

This operators manual is to be stored in the manual compartment equipped on this machine. Make sure this manual is complete and in good condition. Contact your dealer to obtain additional manuals. Contact your dealer for any further information or assistance about your machine. Your dealer has corporation approved service parts. Your dealer has technicians with special training that know the best methods or repair and maintenance for your skid steer. Your Case dealer is available for any further information. They will also provide any after-sales service you may need, and genuine Case spare parts, your guarantee of quality and match. Case Construction customer assistance is also available. Call 1-866-54-CASE6 (1-866-542-2736) or email casecustomerassistance.na@cnh.com.

The information in this manual is provided on the basis of information that was available at the time that the manual was written. Settings, procedures, part numbers, software, and other items can change. These changes can affect the service that is given to the machine. Ensure that you have complete and current information from your dealer before you start any machine operation.

Personal safety



This is the safety alert symbol. It is used to alert you to potential personal injury hazards. Obey all safety messages that follow this symbol to avoid possible death or injury.

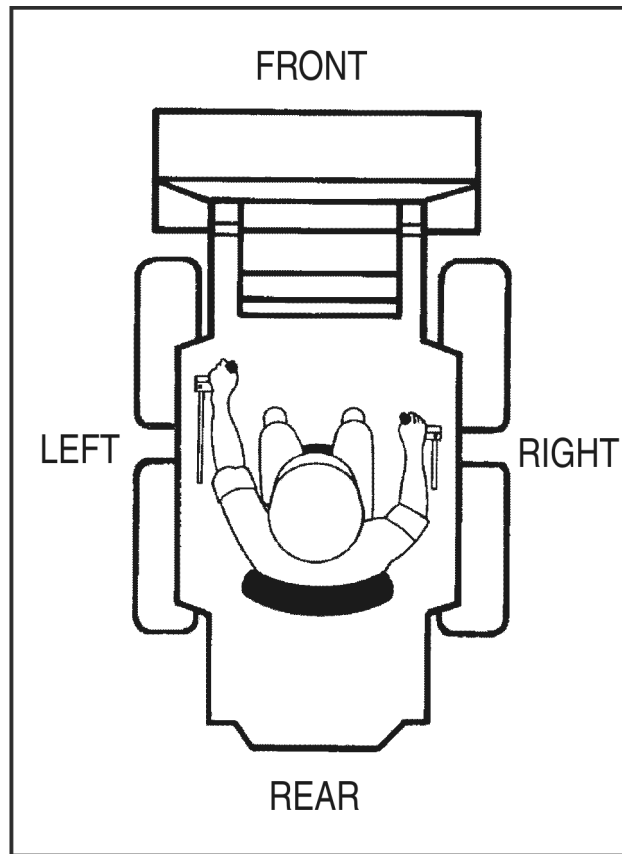
Throughout this manual and on machine decals, you will find the signal words DANGER, WARNING, and CAUTION followed by special instructions. These precautions are intended for the personal safety of you and those working with you.

DO NOT operate or permit anyone to operate or service this machine until you or the other persons have read and understand the safety, operation, and maintenance instructions in this manual. Use only trained operators who have demonstrated the ability to operate and service this machine correctly and safely. All persons who will be operating this machine shall possess a valid local vehicle operating permit and/or other applicable local age work permit. The information in this manual is provided on the basis of information that was available at the time that the manual was written. Settings, procedures, part numbers, software and other items can change. These changes can affect the service that is given to the machine. Ensure that you have complete and most current information from your dealer before you start your machine operation.

DO NOT use this machine for any application or purpose other than those described in this manual. Consult an authorized dealer on changes, additions or modifications that can be required for this machine to comply with various country regulations and safety requirements. Unauthorized modifications will cause serious injury or death. Anyone making such unauthorized modifications is responsible for the consequences.

NOTICE: *The engine and fuel system on your machine is designed and built to government emissions standards. Tampering by dealers, customers and operators is strictly prohibited by law. Failure to comply could result in government fines, rework charges invalid warranty, legal action and possible confiscation of the machine until rework to original condition is completed. Engine service and or repairs must be done by a certified technician only!*

Right, left, front and rear of the machine



BT01F013 1

The terms RIGHT HAND, LEFT HAND, FRONT and REAR are used in this manual to indicate the sides as they are seen from the operator's seat.

Identification numbers

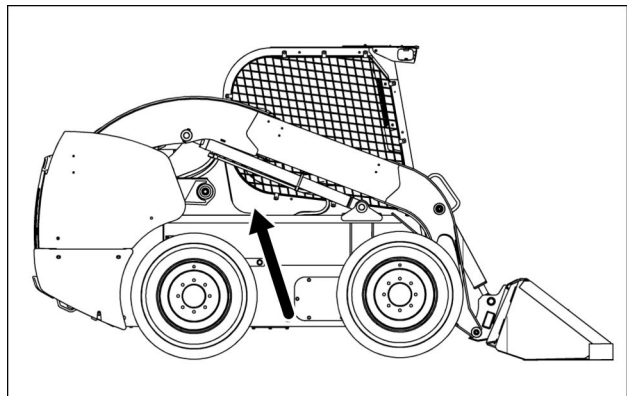
Write your machine model number, Product Identification Number (PIN) and serial numbers on the lines provided below. Always give these numbers and component plate numbers to your dealer when you need parts or information for your machine.

Make a record of the numbers. Keep this record and your manufacturers statement of origin in a safe place. If the machine is stolen, report the numbers to your local law enforcement agency.

MACHINE	
Machine Model and Type	_____
Product Identification Number	_____
Year of Build	_____
Engine Serial Number	_____
Hydrostatic Pump Serial Number	_____
Bucket Serial Number	_____

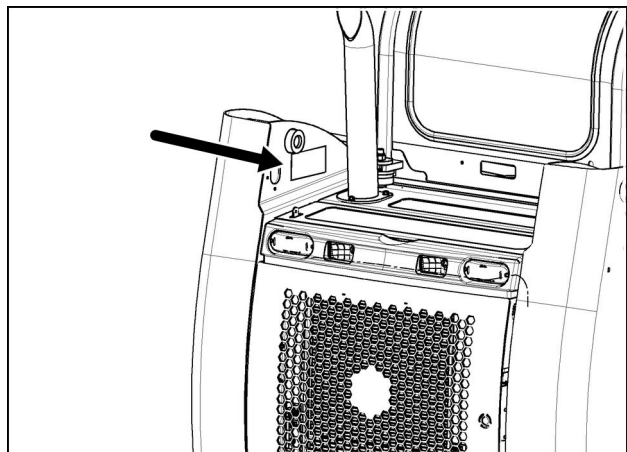
Product Identification Number (PIN)

- Outside right side of chassis - vertical lift.



RCPH11SSL005AAD 1

- Inside left side lift arm tower - radial lift.

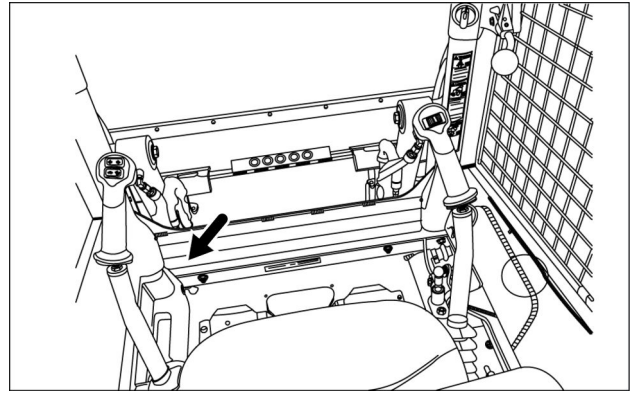


931002296A 2

1 - GENERAL INFORMATION

Roll Over Protective Structure (ROPS) certification plate.

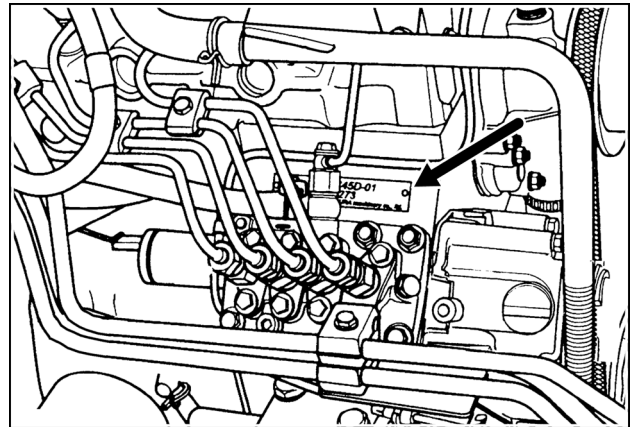
- Front edge (lower) inside cab.



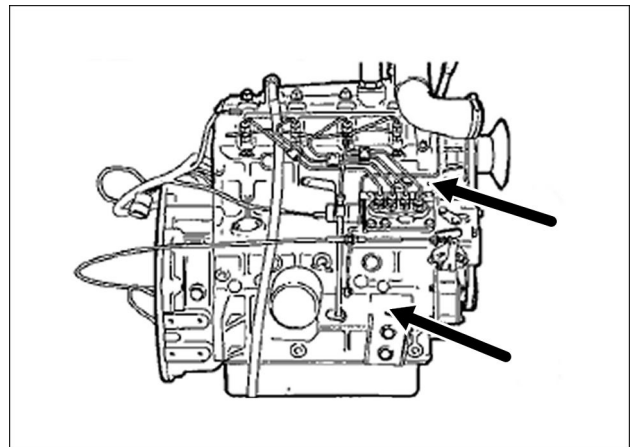
931007505A 3

Engine serial number plate.

Located on the fuel injection pump - ISM engines.	
SR130	ISM engine
SR150	
SR175	
SV185	



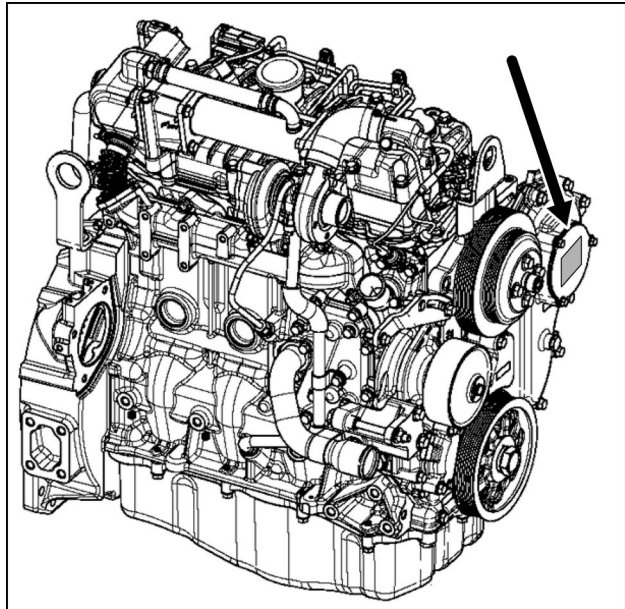
76075756 4



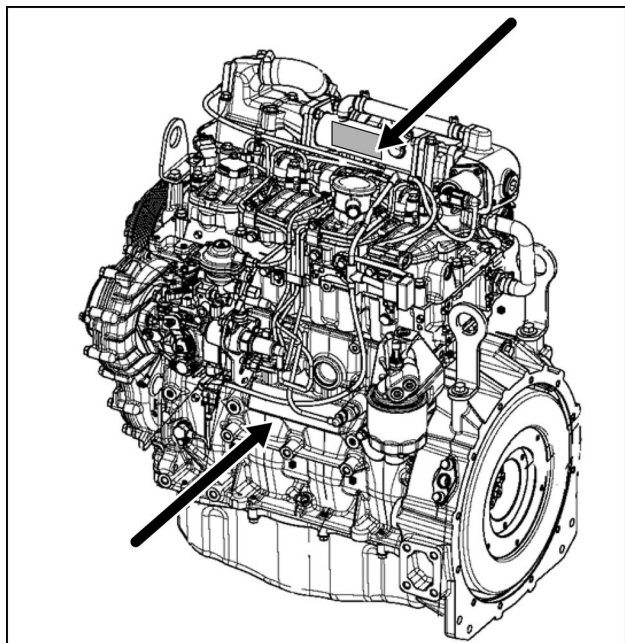
RCPH11SSL004AAD 5

1 - GENERAL INFORMATION

Located at the end of the engine that is facing rearward.	
SR200	F5C engines
SR220	
SR250	
SV250	
SV300	
TR270	
TR320	
TV380	

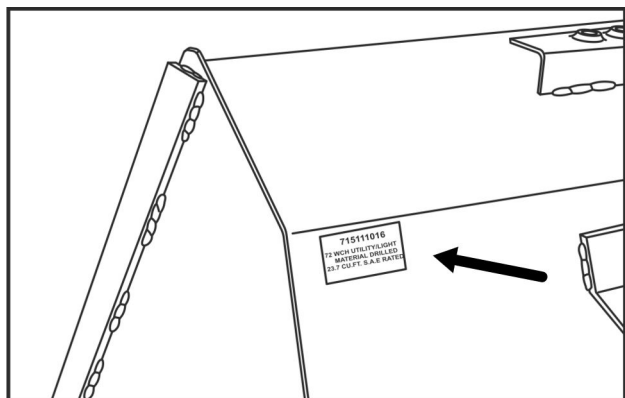


931002236 6



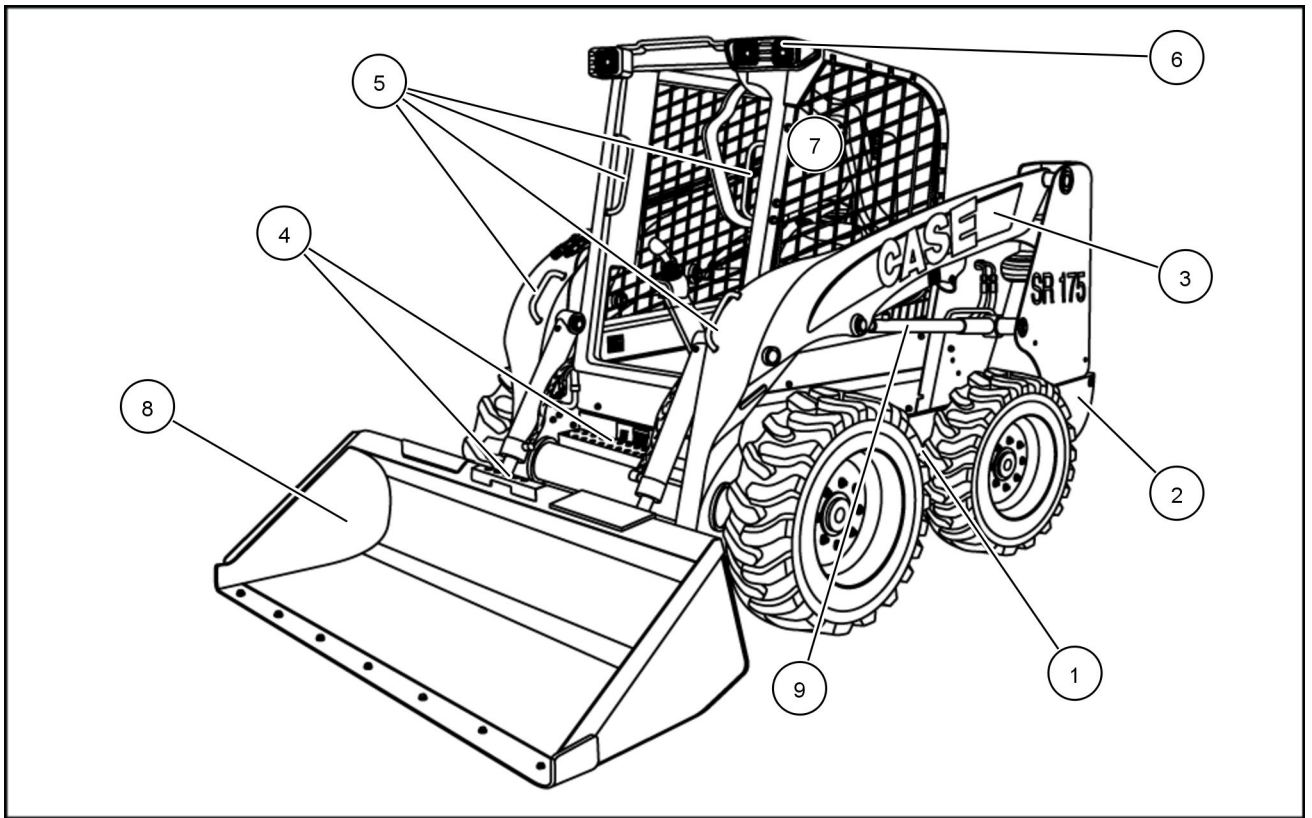
931002237 7

Bucket identification plate



BT04F026-01 8

Machine components



93106896 1

- (1) Chain compartment access
- (2) Service access cover
- (3) Loader lift arm
- (4) Steps
- (5) Hand holds

- (6) Front light
- (7) Operator's compartment
- (8) Bucket
- (9) Loader arm lift cylinder

2 - SAFETY INFORMATION

Signal word definitions

Personal safety



This is the safety alert symbol. It is used to alert you to potential personal injury hazards. Obey all safety messages that follow this symbol to avoid possible death or injury.

Throughout this manual and on machine decals, you will find the signal words DANGER, WARNING, and CAUTION followed by special instructions. These precautions are intended for the personal safety of you and those working with you.

Read and understand all the safety messages in this manual before you operate or service the machine.

! DANGER indicates a hazardous situation which, if not avoided, will result in death or serious injury. The color associated with DANGER is RED.

! WARNING indicates a hazardous situation which, if not avoided, could result in death or serious injury. The color associated with WARNING is ORANGE.

! CAUTION, used with the safety alert symbol, indicates a hazardous situation which, if not avoided, could result in minor or moderate injury. The color associated with CAUTION is YELLOW.

FAILURE TO FOLLOW DANGER, WARNING, AND CAUTION MESSAGES COULD RESULT IN DEATH OR SERIOUS INJURY.

Machine safety

NOTICE: Notice indicates a situation which, if not avoided, could result in machine or property damage.

Throughout this manual you will find the signal word Notice followed by special instructions to prevent machine or property damage. The word Notice is used to address practices not related to personal safety.

Information

NOTE: Note indicates additional information which clarifies steps, procedures, or other information in this manual.

Throughout this manual you will find the word Note followed by additional information about a step, procedure, or other information in the manual. The word Note is not intended to address personal safety or property damage.

Safety rules

Most accidents involving machine operation and maintenance can be avoided by following basic safety rules and precautions. Read and understand all the safety messages in this manual, the safety manual, and the safety decals on the machine before you operate or service the machine. See your dealer if you have any questions.

Operator's manual storage behind the seat.

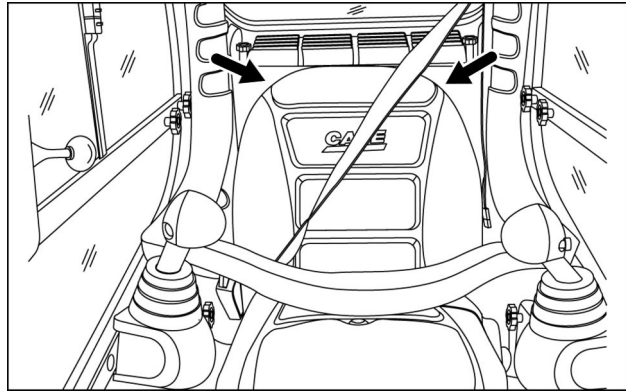
READ THIS MANUAL COMPLETELY and make sure you understand the controls. All equipment has a limit. Make sure you understand the speed, brakes, steering, stability and load characteristics of this machine before you start to operate.

Do not remove this manual or the safety manual from the machine. See your dealer for additional manuals.

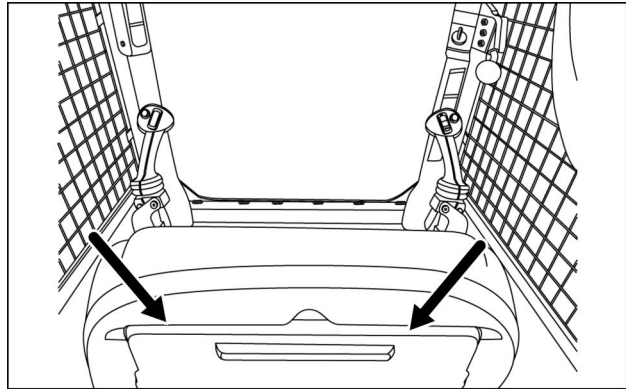
The safety information given in this manual does not replace safety codes, insurance needs or, Federal, State, and local laws. Make sure your machine has the correct equipment according to these rules or laws.

NOTICE: Safety messages in this section point out situations which can be encountered during the normal operation and maintenance of your machine. These safety messages also give possible ways of dealing with these conditions.

NOTE: Additional safety messages are used in the text of the manual to show specific safety hazards.



63107486 1



93109347B 2

Before operation

- Be prepared for emergencies. It is recommended to have a first aid kit and a fire extinguisher with you. Be sure that the fire extinguisher is properly maintained. Be familiar with the correct use.
- Before you start each day, walk around the machine and check for oil or fluid leaks. Inspect for broken or missing parts, repair or replace, and follow the required lubrication and maintenance as shown in this manual. Clean all trash and debris from the machine.
- Engine exhaust fumes can cause death. If you operate this machine in an enclosed area, be sure there is sufficient ventilation to replace the exhaust fumes with fresh air.
- Know the rules, laws, and safety equipment necessary for transporting this machine on a road or highway.

Decal information

⚠ WARNING

Avoid injury!

Make sure safety signs are legible. Clean safety signs regularly. Replace all damaged, missing, painted over, or illegible safety signs. See your dealer for replacement safety signs. If a safety sign is on a part that is replaced, make sure the new part has a safety sign.

Failure to comply could result in death or serious injury.

W0168A

Safety decals are placed on your machine as a guide for your safety. Walk around the machine and note the content and location of these decals before operating your machine.

Decal inspection and maintenance.

- Cleaning decals.
 - Keep decals clean and legible.
 - Use a soft cloth, water, and a gentle detergent.
 - DO NOT use solvent, gasoline, or other harsh chemicals to clean decals. Solvents, gasoline, and other harsh chemicals may damage or remove decals.
- Replace all decals that are damaged, missing, painted over, or illegible. See your dealer for replacement decals.
- If a decal is on a part that is replaced, make sure the decal is installed on the new part.

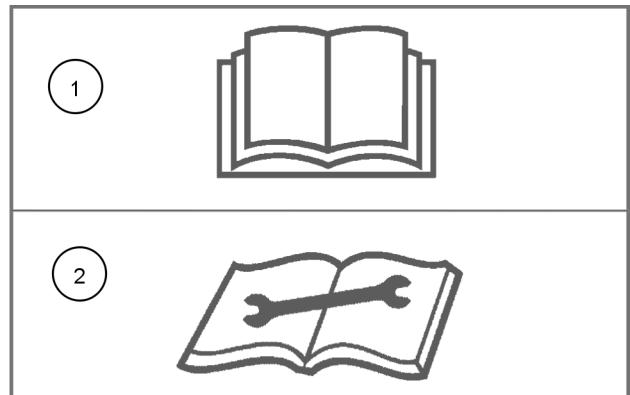
Read operators manual symbol.

Decals which display the “read operators manual” symbol (1) are intended to direct the operator to the operators manual for further information regarding safety, maintenance, adjustments and/or procedures for specific areas of the machine. When a decal displays this symbol, refer to the operators manual.

Read service manual symbol.

When a decal displays the “read service manual” symbol (2), refer to the service manual for specific information such as service, operation, maintenance or adjustment. See an authorized dealer for a service manual.

One or both of these symbols may appear on a decal relating to safety, machine operation or service. To the right is a sample decal that directs the machine operator or service technician to the operators manual (1) for additional information concerning this procedure.




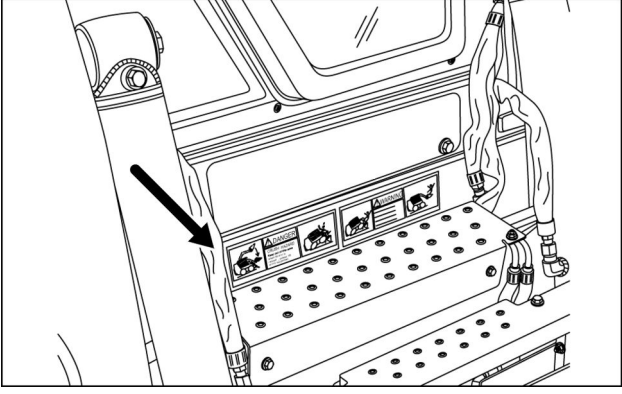
BT09A330 1


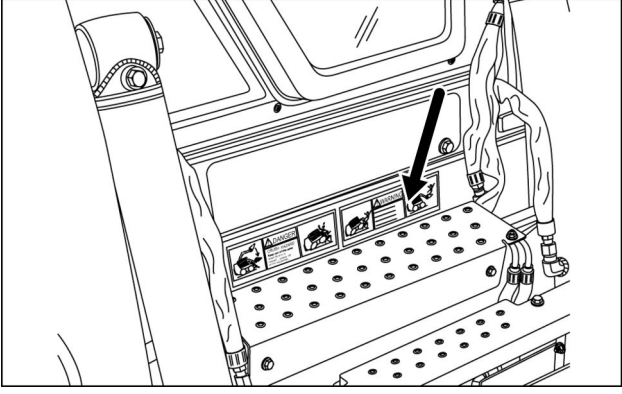


20109155 2

Safety decals

Following is a listing of Safety Decals and locations. Read and understand them before operating the machine.

<p>DANGER CRUSH HAZARD Keep out of this area when lift arm is raised, unless lift arm is supported by the support strut. Failure to comply will result in death or serious injury.</p> <p>Quantity: 1 English 84367563</p>	 <p>21109149 1</p>
<p>Located under door way.</p>	 <p>931002299 2</p>

<p>WARNING FALL HAZARD NO Riders. Not a manlift or work platform. Failure to comply could result in death or serious injury.</p> <p>Quantity: 1 English 84374298</p>	 <p>84374298_A 3</p>
<p>Located under door way.</p>	 <p>931002299 4</p>

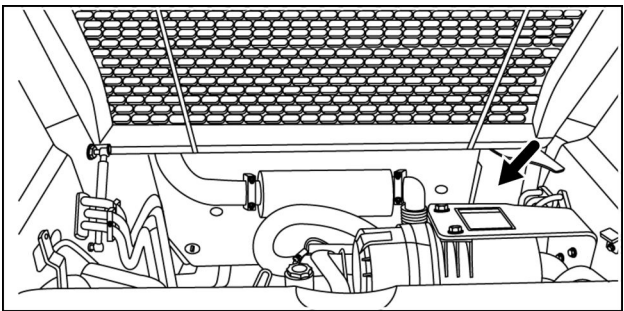
DANGER
DO NOT use ether starting fluid. AN EXPLOSION MAY OCCUR. Failure to comply will result in death or serious injury.

Quantity: 1
 English 8603092



629086D 5

Located under the hood, on top of the air cleaner bracket.



93106901 6

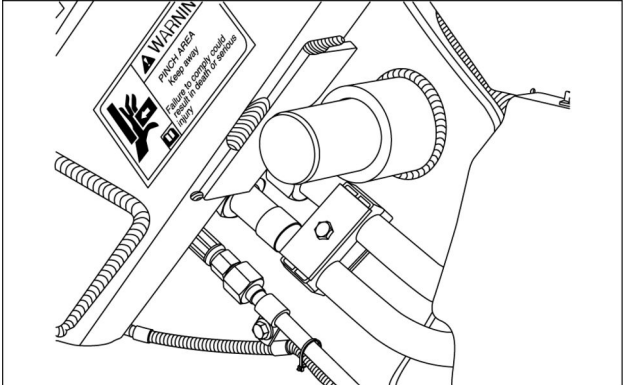
WARNING
 Avoid pinch area. Keep clear of moving parts. Keep bystanders clear of the skid steer when operating unless the lift arm is down on the ground so the lift arm is resting on the lift arm lock and engine is off. Never extend any part of the body outside of the outside of the operators area. Failure to comply will result in death or serious injury.

Quantity: 2
 English 86521673



86521673_E 7

Located at both points on the boom where it rests against the lift arm support lock.



93107458 8

WARNING

Read Operator's manual. Fasten seat belt. No riders.
Keep others away. Not a manlift.

CRUSH HAZARD

Before leaving seat:
Lower lift arm or engage lift arm lock pin or strut.
STOP engine.
Mover loader controls to check for loader movement.
Failure to comply will result in death or serious injury.

Quantity: 1
English 84367570

WARNING

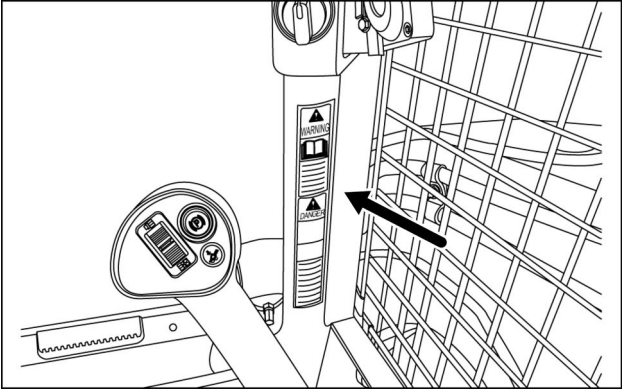
Read Operator's Manual.
Fasten seat belt.
No riders.
Keep others away.
Not a manlift.

CRUSH HAZARD

Before leaving seat:
Lower lift arm or engage lift arm lock pin or strut.
STOP engine.
Mover loader controls to check for loader movement.
Failure to comply will result in death or serious injury.

84367570_A 9

Located under the right hand side of the instrument cluster.



63107487 10

CRUSH HAZARD

Always engage the loader lift arm support strut when the lift arms are raised for service and / or maintenance. Failure to comply could result in death or serious injury.

Quantity: 1
English 84367429A

WARNING

CRUSH HAZARD
Always engage the Loader Lift Arm support strut when the Lift Arms are raised for service and / or maintenance.
Failure to comply could result in death or serious injury.

PROCEDURE TO SECURE LIFT ARMS IN RAISED POSITION

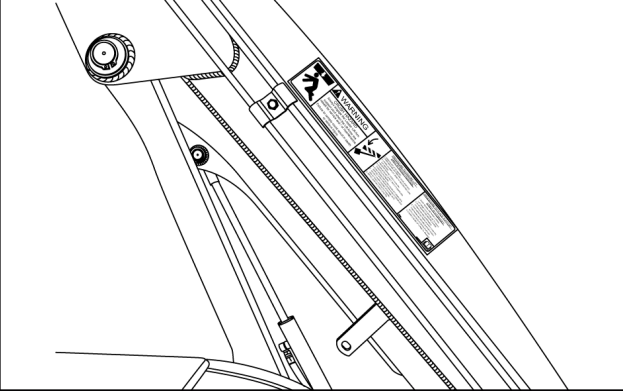
REMOVE ANY ATTACHMENTS.
LIFT ARMS MUST BE UP AND LEVEL. SURFACE TO BE MAINTAINED BY LIFT ARMS TO GROUND AND TURN OFF ENGINE.
LOWER SUPPORT STRUT INTO POSITION AND LOCK STRUT LOCK PIN.
LOWER SUPPORT STRUT INTO POSITION AND LOCK STRUT LOCK PIN.
LOWER SUPPORT STRUT INTO POSITION AND LOCK STRUT LOCK PIN.
LOWER SUPPORT STRUT INTO POSITION AND LOCK STRUT LOCK PIN.
LOWER SUPPORT STRUT INTO POSITION AND LOCK STRUT LOCK PIN.

PROCEDURE TO PLACE SUPPORT STRUT IN STORAGE

LIFT ARMS TO 3 INCHES IN TO BRACKETS.
LIFT ARMS AND BRACKETS MUST BE LOCKED.
LIFT ARMS AND BRACKETS MUST BE LOCKED.
LIFT ARMS AND BRACKETS MUST BE LOCKED.
LIFT ARMS AND BRACKETS MUST BE LOCKED.
LIFT ARMS AND BRACKETS MUST BE LOCKED.

20109151 11

Located on the lift arm support strut that is mounted on the right side loader arm.



93109382 12