

580N
Tractor Loader Backhoe
Tier IV A

Parts Catalog

Print No. 47761748
Issued 8/2014

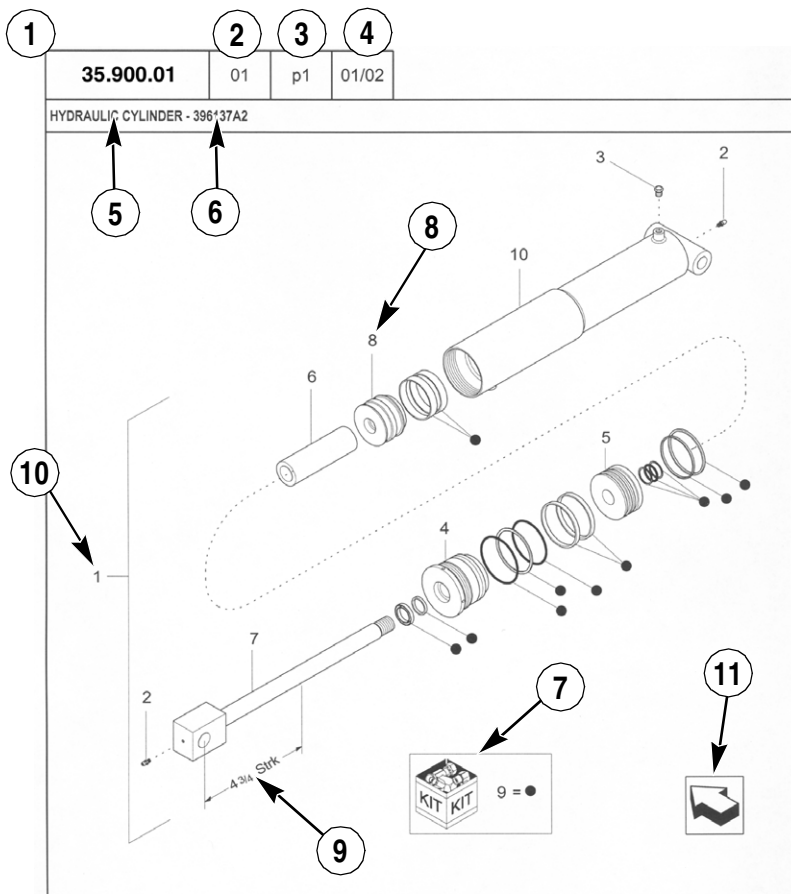


GENERAL INFORMATION

1. Whenever the terms left and right are used, it should be understood to mean from a position facing in direction of travel.
2. Throughout this manual you may find common hardware not illustrated, but listed in the description column. The service part immediately preceding a hardware listing is the part using these particular items for mounting purposes. This hardware is not included with the service part or assembly when ordered as a replacement.
3. The illustrations show typical assemblies plus individual parts but in all cases may not show the exact shape or detail of parts required. However, the purpose for the illustrations is to identify parts performing like functions. Whenever possible illustrations are located at the beginning of each section or immediately adjacent to the applicable text.
4. CNH America LLC is continually striving to improve its products. We must, therefore, reserve the right to make improvements or changes when it becomes practical and possible to do so, without incurring any obligation to make changes or additions to the equipment sold previously.

CNH America LLC, Racine, WI 53404 U.S.A.

How to Use Your Parts Catalog



HYDRAULIC CYLINDER - 396137A2					
REF	FN	PART NUMBER	YR/SN	QTY	DESCRIPTION
1	1	396137A2	BTW 01/85 & 02/02	1	CYLINDER ASSY. 4-3/4 in strk, Inc 2-10
2		31-95	Before 01/85	2	FITTING
2		219-8	From 01/85	2	NIPPLE, LUBE Grease, 1/4 tpr x 17/32
3		{402475A2}		1	BREATHER
4		402474A1		1	CAP CYLINDER END
5		402468A1	BSN JJC0189200	1	PISTON ROD/GLAND
5		145221C3	ASN JJC0189200	1	PISTON
6		402471A1		1	SPACER
7		402473A1		1	ROD, PISTON
8		402469A1		1	PISTON ROD/GLAND
9		402476A1		1	PACKAGE, SEALS
10		NSS		1	NOT SERVICED SEPARAT CASE ASSEMBLY
(1) 08-20					
STANDARD			MODELS		

How to Use Your Parts Catalog

1. Figure Number
2. Sequence code within the Figure Number
3. Page number within the Sequence Code
4. Date of Printing (month / year)
5. Figure Description
6. General information regarding the figure
7. Parts supplied in repair kits per symbol reference
8. Figure call-out of the part number (REF)
9. Technical Specifications relating to the part indicated
10. Figure call-out includes bracketed items, the included items may also be listed in the additional description area
11. Orientation - Arrow indicates front of the machine
12. Footnote - Additional information relating to the part number. In this example, 08-20 equals another figure that this part is shown on.
13. Part Number
 - NSS = Non-serviced parts
 - Bracketed numbers = not available as service parts in this market
14. Not Available as service part in this market
15. YR/SN
 - Year
 - Before 01/85 = Part valid for production January 1985 and before
 - From 01/85 = Part valid for production from January 1985 and after
 - BTW 01/85 & 02/02 = Part valid for machines produced between January 1985 and February 2002.
 - Serial Number (P.I.N.)
 - BSN JJC0268800 = Part valid for serial number JJC0268800 and below
 - ASN JJC0268800 = Part valid for serial number JJC0268800 and above
 - BTW JJC0178000 & JJC0179000 = Part valid for serial numbers between JJC0178000 & JJC0179000
16. Total Quantity of the Part referred to in the page. The quantity can be replaced by the following indications:
 - AR = quantity as required
 - X = as required
17. Part Description
18. Additional description of the part to help confirm identification
19. Figure Notes
20. Model Number(s)

Explanation of Abbreviations

Abbreviation	Meaning
adj	adjustable
amp	ampere
AR	As required
ASN	Serial number and after / P.I.N. and after
barb	barb
blkhd	bulkhead
boss	boss
BSN	before serial number / before P.I.N
BTW	between
cc	cubic centimetre
chain	chain
cl	class
cp pt	cup point
CRS	Chrome Alloy Steel
CST	Carbon Steel
cu yd	cubic yard
deg	degree
dia	diameter
dr type	drive type
dry	dry
fc	face
fc sl	face seal
fem	female
fem PT	female pipe thread
fl	flare
ft	feet (or foot)
gal	gallon(s)
gr	grade
hd	head
hp	horsepower
ID	inside diameter

Abbreviation	Meaning
in	inch(es)
Inc.	includes
inv fl	inverted flare
K	kilo
kg	kilogram
L	litre
lb	pound(s)
lg	long
LH	left hand
LH thd	left hand thread
links	links
M	(prefix) metric thread size
m	metre
male	male
mm	millimetre
NF	National Fine
No.	number
NS	National Super Fine
OD	outside diameter
ohm	electrical unit of resistance
Or	O-ring
orifice	orifice
P	pitch
piece	piece
psi	pounds per square inch
PT	pipe thread
rd	round
rd holes	round holes
RH	right hand
RH thd	right hand thread
rpm	revolutions per minute

Explanation of Abbreviations

Abbreviation	Meaning
sl	self locking
slat	slat
spool	spool
sq	square
SST	Stainless Steel
st	self tapping
stem	stem
strk	stroke
sw	swivel
T	teeth
Teflon	Teflon
thin	thin
thk	thick
tpr	taper

Abbreviation	Meaning
tube	tube
type	type
V	volt(s)
W	watt(s)
way	way
wide	wide
X	as required
yd	yard

Dimensions

Metric and U.S. hardware dimensions do not show the numeric designations of standard coarse threads. A number following a semi colon (;) is the class or grade of hardware. A comma (,) represents the decimal point (.) used in U.S. dimensions.



TABLE OF CONTENTS

00.000.00	01	PICTORIAL INDEX - MAIN SECTIONS
00.000.00	02	PICTORIAL INDEX - MAIN SECTIONS
00.000.10	03	PICTORIAL INDEX - ENGINE
00.000.10	04	PICTORIAL INDEX - ENGINE
00.000.21	01	PICTORIAL INDEX - TRANSMISSION POWERSHUTTLE
00.000.21	02	PICTORIAL INDEX - TRANSMISSION POWERSHIFT
00.000.21	03	PICTORIAL INDEX - TRANSMISSION
00.000.25		PICTORIAL INDEX - FRONT MECHANICAL DRIVE
00.000.27		PICTORIAL INDEX - REAR DRIVE AXLE
00.000.33		PICTORIAL INDEX - BRAKES AND CONTROLS
00.000.35	01	PICTORIAL INDEX - HYDRAULIC SYSTEM
00.000.35	02	PICTORIAL INDEX - HYDRAULIC SYSTEM
00.000.35	03	PICTORIAL INDEX - HYDRAULIC SYSTEM
00.000.35	04	PICTORIAL INDEX - HYDRAULIC SYSTEM
00.000.35	05	PICTORIAL INDEX - HYDRAULIC SYSTEM
00.000.37		PICTORIAL INDEX - TOWING HOOK AND BALLASTING
00.000.39		PICTORIAL INDEX - FRAME
00.000.41	01	PICTORIAL INDEX - STEERING
00.000.41	02	PICTORIAL INDEX - STEERING
00.000.44	01	PICTORIAL INDEX - AXLE AND WHEELS - FRONT
00.000.44	02	PICTORIAL INDEX - AXLE AND WHEELS - FRONT
00.000.50		PICTORIAL INDEX - CAB CLIMATE CONTROL
00.000.55	01	PICTORIAL INDEX - ELECTRICAL SYSTEM
00.000.55	02	PICTORIAL INDEX - ELECTRICAL SYSTEM
00.000.55	03	PICTORIAL INDEX - ELECTRICAL SYSTEM
00.000.55	04	PICTORIAL INDEX - ELECTRICAL SYSTEM
00.000.82	01	PICTORIAL INDEX - FRONT LOADER
00.000.82	02	PICTORIAL INDEX - FRONT LOADER
00.000.84	01	PICTORIAL INDEX - BACKHOE
00.000.84	02	PICTORIAL INDEX - BACKHOE
00.000.88		PICTORIAL INDEX - ACCESSORIES
00.000.90	01	PICTORIAL INDEX - PLATFORM, CAB, BODYWORK AND DECALS
00.000.90	02	PICTORIAL INDEX - PLATFORM, CAB, BODYWORK AND DECALS
00.000.90	03	PICTORIAL INDEX - PLATFORM, CAB, BODYWORK AND DECALS

TABLE OF CONTENTS

00.000.90	04	PICTORIAL INDEX - PLATFORM, CAB, BODYWORK AND DECALS
00.500.01		DIA, KIT
05.100.01		INITIAL STOCKING LIST (LIST A)
05.100.02		INITIAL STOCKING LIST (LIST B)
05.100.03		FILTERS & CAPACITIES
10.000.10	03	SECTION INDEX - ENGINE
10.000.10	04	SECTION INDEX - ENGINE
10.001.01		ENGINE ASSY
10.001.05		ENGINE ASSY - ACCESSORIES
10.202.01	01	AIR CLEANER
10.202.01	02	AIR CLEANER
10.216.01		FUEL LINES, RESERVOIR
10.216.02		FUEL LINES, RESERVOIR
10.216.03		VAR - 442082, 423000, 747853, 747854, 747855 - COOLER
10.254.11	01	MUFFLER ASSY
10.254.11	02	MUFFLER
10.406.01		VAR - 423000, 442082, 747853, 747854, 747855 - AIR INTAKE, HEAT EXCHANGER
10.406.02	01	VAR - 747853, 747855 - RADIATOR & SHROUD, MOUNTING PARTS
10.406.02	02	VAR - 747853, 747855 - COOLANT EXPANSION RESERVOIR
10.406.03		VAR - 423000, 442082, 747853, 747854, 747855 - RADIATOR & RELATED PARTS
10.406.04		COOLER
10.408.02		VAR - 423000, 442082, 747853, 747854, 747855 - OIL COOLER, HYDRAULIC OIL
10.408.07		COOLER, CHARGE AIR AND HOSES
10.414.01		ENGINE FAN - 9 BLADE (VISCOUS)
10.414.02		ENGINE FAN - 7BLADE (NON VISCOUS)
21.000.00	01	PICTORIAL INDEX - TRANSMISSION
21.000.00	02	PICTORIAL INDEX - TRANSMISSION
21.000.00	03	PICTORIAL INDEX - TRANSMISSION
21.104.01		VAR - 423058, 423059 - TRANSMISSION, STANDARD , OIL COOLER LINE
21.104.03		VAR - 423058, 423059 - TRANSMISSION, STANDARD , OIL FILTER
21.105.01		VAR - 423060, 423061 - TRANSMISSION- POWERSHIFT S-TYPE - FILTER, OIL
21.105.02		VAR - 423060, 423061 - 2WD / 4WD POWERSHIFT S-TYPE - OIL COOLER LINE

TABLE OF CONTENTS

21.112.01		VAR - 423058 - STANDARD TRANSMISSION - HOUSING - 2WD
21.112.0101		VAR - 423059 - STANDARD TRANSMISSION - HOUSING - 4WD
21.112.04	01	VAR - 423058 - STANDARD TRANSMISSION - MOUNTING - 2WD
21.112.04	02	VAR - 423058 - STANDARD TRANSMISSION - DIPSTICK - 2WD
21.112.0401		VAR - 423059 - STANDARD TRANSMISSION - MOUNTING - 4WD
21.113.01	01	VAR - 423060 - TRANSMISSION - MOUNTING - POWERSHIFT S-TYPE - 2WD
21.113.01	02	VAR - 423060, 423061 - POWERSHIFT S- TYPE - POWERSHIFT - DIPSTICK
21.113.0101		VAR - 423061 - POWERSHIFT S-TYPE - MOUNTING - 4WD
21.113.04		VAR - 423060 - HOUSING - POWERSHIFT S-TYPE - 2WD
21.113.0401		VAR - 423061 - HOUSING - POWERSHIFT S-TYPE 4WD
21.134.01		VAR - 423062 - TRANSMISSION - LEVER - POWERSHIFT H-TYPE 4WD
21.134.02		VAR - 423058 - STANDARD TRANSMISSION - SHIFTER MECHANISM
21.134.03		VAR - 423058 - TRANSMISSION ASSY - VALVE, CONTROL - STANDARD TRANSMISSION
21.134.04		VAR - 423059 - TRANSMISSION ASSY - VALVE, CONTROL - STANDARD TRANSMISSION 4WD
21.135.01		VAR - 423060, 423061 - TRANSMISSION - VALVE, CONTROL - POWERSHIFT S-TYPE
21.140.01		VAR - 423058 - STANDARD TRANSMISSION - SHAFT, INPUT & PTO
21.154.01		VAR - 423058 - STANDARD TRANSMISSION - PUMP, OIL
21.154.02		VAR - 423058 - STANDARD TRANSMISSION - SHAFT, REVERSE & PRIMARY
21.154.07		VAR - 423058 - STANDARD TRANSMISSION - SHAFT, SECONDARY - 2WD
21.154.0701		VAR - 423059 - STANDARD TRANSMISSIONTRANSMISSION - SHAFT, SECONDARY - 4WD
21.154.09		VAR - 423059 - STANDARD TRANSMISSION - SHAFT, OUTPUT - 4WD
21.155.01		VAR - 423060 - TRANSMISSION POWERSHIFT S-TYPE - PUMP, OIL
21.155.02		VAR - 423060 - TRANSMISSION POWERSHIFT S-TYPE - SHAFT, INPUT & PTO
21.155.03		VAR - 423060 - TRANSMISSION POWERSHIFT S-TYPE - SHAFT, SECONDARY
21.155.04		VAR - 423060 - TRANSMISSION POWERSHIFT S-TYPE - SHIFTER MECHANISM
21.700.01		VAR - 423058 - TORQUE CONVERTER - CLUTCH, TRANSMISSION, STANDARD 2WD
25.000.00		PICTORIAL INDEX - FRONT MECHANICAL DRIVE
25.100.02		AXLE, FRONT DRIVE - MOUNTING - 4WD
25.100.03		AXLE, FRONT - MOUNTING

TABLE OF CONTENTS

25.100.04		AXLE, FRONT - HOUSING - 2WD
25.100.08		COVER, SPHERICAL BEARING, 4WD
25.100.16		DRIVE SHAFT, FRONT AXLE - 4WD
25.102.01		GEAR SET - 4WD
25.102.03		DIFFERENTIAL ASSY - 4WD
25.108.01		ARTICULATED AXLE SHAFT - 4WD
25.108.02	01	STEERING KNUCKLE - 4WD
25.108.02	02	PLANETARY HUB - 4WD
25.108.03		STEERING KNUCKLE - CYLINDER - 2WD
25.108.04		HUB - BEARING - 2WD
27.000.00		SECTION INDEX - REAR DRIVE AXLE
27.100.01		REAR AXLE ASSY, DRIVE SHAFT
27.100.02		BRAKE - DIFFERENTIAL
27.100.03		REAR AXLE, HOUSING
27.100.10		DRIVE SHAFT
27.106.01		DIFFERENTIAL GEAR
27.106.02		REAR AXLE - BEVEL GEAR
27.106.03		DIFFERENTIAL LOCK
27.110.02		DIFFERENTIAL LOCK - HYDR LINES
27.120.01		WHEEL HUB & REDUCTION GEAR
33.000.00		SECTION INDEX - BRAKES & CONTROLS
33.110.01		VAR - 423058, 423059, 423060. 423061 - TRANSMISSION, PARKING BRAKE
33.110.02		VAR - 423058, 423059, 423060. 423061, 423062 - PARKING BRAKE, CONTROL VALVE
33.202.01		BRAKE LINE
33.202.02		BRAKE - PEDAL
33.202.04		BRAKE LINE, PEDAL
35.000.00	01	PICTORIAL INDEX - HYDRAULIC SYSTEM
35.000.00	02	PICTORIAL INDEX - HYDRAULIC SYSTEM
35.000.00	03	PICTORIAL INDEX - HYDRAULIC SYSTEM
35.000.00	04	PICTORIAL INDEX - HYDRAULIC SYSTEM
35.000.00	05	PICTORIAL INDEX - HYDRAULIC SYSTEM
35.106.01	01	HYDRAULIC PUMP, HYDR LINES
35.106.01	02	HYDRAULIC PUMP, COMPONENTS

TABLE OF CONTENTS

35.300.01	HYDRAULIC OIL RESERVOIR
35.350.10	HYDRAULICS - AUTO RIDE CONTROL - 4WD
35.350.1001	HYDRAULICS - STANDARD RIDE CONTROL - 2WD
35.350.1002	HYDRAULICS - NO RIDE CONTROL
35.359.01	HANDLE, LOADER CONTROL - TRANSMISSION ASSY, 2WD, 4WD
35.359.02	HANDLE, LOADER CONTROL - POWER SHIFT TRANSMISSION
35.432.01	VAR - 423011 - STEERING CONTROL VALVE
35.701.03	FRONT LOADER HYDRAULIC SYSTEM - LIFT CYLINDER
35.701.11	HYDRAULICS - LOADER LIFT CYLINDER
35.701.14	HYDRAULICS - LOADER
35.701.15	VAR - 747776 - HYDRAULICS - VALVE, LOADER CONTROL - 3 SPOOL VALVE W/O PILOT CONTROLS
35.701.16	HYDRAULICS - LOADER, 2 SPOOL VALVE
35.701.17	VAR - 747776, 747864 - HYDRAULICS - LOADER 4 IN 1 - 3 SPOOL VALVE
35.701.18	VAR - 747776, 747864 - HYDRAULICS - LOADER 4 IN 1 - 3 SPOOL VALVE
35.701.19	HYDRAULICS - LOADER, 2 SPOOL VALVE PILOT CONTROLS
35.701.20	HYDRAULICS - VALVE, LOADER CONTROL - 2 SPOOL VALVE W/O PILOT CONTROLS
35.701.21	HYDRAULICS - LOADER, 2 SPOOL VALVE PILOT CONTROLS
35.701.22	VAR - 747864 - HYDRAULICS - VALVE, LOADER CONTROL - 3 SPOOL VALVE, W/ PILOT CONTROLS
35.701.23	HYDRAULICS - LOADER, 2 SPOOL VALVE PILOT CONTROLS (BRAZIL)
35.701.29	VAR - 423049 - HYDRAULICS - TOOL QUICK COUPLER, LOADER
35.701.32	VAR - 747776, 747864 - HYDRAULICS - LOADER, 3 SPOOL VALVE
35.703.0101	CYLINDER - BACKHOE STABILIZER
35.703.0201	CYLINDER - BACKHOE STABILIZER
35.703.0301	STABILIZER CYLINDER - HYDR LINES
35.723.01	LOADER BUCKET CYLINDER
35.723.02	LOADER BUCKET CYLINDER
35.723.03	VAR - 742433, 747863 - FRONT LOADER HYDRAULIC SYSTEM - CLAM CYLINDER RH
35.723.04	VAR - 742433, 747863 - FRONT LOADER HYDRAULIC SYSTEM - CLAM CYLINDER LH
35.723.05	VAR - 742433, 747863 - CLAM CYLINDER - CONTROL VALVE LINE
35.723.06	VAR - 742433 - CLAM CYLINDER - 4-IN-1 BUCKET, HYDR LINES
35.723.0601	VAR - 747863 - CLAM CYLINDER - 4-IN-1 BUCKET, HYD. LINE

TABLE OF CONTENTS

35.724.07	01	VAR - X20233X - CONTROL - LOADER BUCKET (GEAR PUMP)
35.724.07	02	VAR - X20233X - CONTROL - LOADER BUCKET
35.724.08		LOADER CONTROL VALVE, GUARD
35.724.11		VAR - X20137X - LOADER CONTROL VALVE, 2 SECTIONS
35.724.12		VAR - X20137X - LOADER CONTROL VALVE, 2 SECTIONS
35.724.13		VAR - X20137X - LOADER CONTROL VALVE, 2 SECTIONS
35.724.14		VALVE, LOADER 3 SPOOL (MECH CONTROLS)
35.724.15		VALVE, LOADER 3 SPOOL (PILOT CONTROLS)
35.726.01		VAR - 423083 - VALVE INSTALL - BACKHOE CONTROL, BI-AUXILIARY (MECHANICAL CONTROLS)
35.726.02		VAR - 423083 - VALVE INSTALL - HAMMER (WITH MECHANICAL CONTROLS)
35.726.03		VAR - 423083 - VALVE ASSY - HAMMER AUXILIARY (WITH MECHANICAL CONTROLS)
35.726.04		VAR - 423083 - VALVE INSTALL - BACKHOE CONTROL, DUAL AUXILIARY (PILOT CONTROLS) VARIABLE VALVE PUMP
35.726.05		VAR - 423083 - VALVE INSTALL - BACKHOE CONTROL, DUAL AUXILIARY (PILOT CONTROLS)
35.726.06	01	VAR - 747669 - HYDRAULIC LINE (PILOT CONTROLS)
35.726.06	02	VAR - 747669 - HYDRAULIC LINE (PILOT CONTROLS)
35.726.07		VAR - 423083 - HYDRAULIC SYSTEM - HAMMER CONTROL
35.726.08		VAR - 423084 - VALVE INSTALL - BACKHOLE CONTROL, DUAL AUX (PILOT CONTROLS) GEAR PUMP ONLY
35.726.09		VAR - 423084 - VALVE ASSY - CLOSED CENTER UNI - AUX
35.726.10		VAR - 423084 - VALVE INSTALL - BACKHOE CONTROL, DUAL AUXILIARY (PILOT CONTROLS) VARIABLE VALVE PUMP
35.726.13		VAR - 747661 - VALVE - HYD INSTALL SINGLE AUX - MECH
35.726.14	01	VAR - 747662 - BACKHOE CONTROL VALVE - HYDR LINES, UNI AUX, PILOT CONTROLS
35.726.14	02	VAR - 747662 - BACKHOE CONTROL VALVE - HYDR LINES, UNI AUX, PILOT CONTROLS
35.726.16	01	VALVE - BACKHOE CONTROL, 6 SPOOL (W/O EXT DIPPER, W/O AUX HYDS, W/O PILOT CONTROLS)
35.726.16	02	BACKHOE CONTROL VALVE, 6 SECTIONS - STANDARD DIPPER W/ PILOT CONTROLS
35.726.16	03	VALVE - BACKHOE CONTROL, 6 SPOOL (W/O EXT DIPPER, W/O 2 LEVERS)
35.726.16	04	VALVE - BACKHOE CONTROL, 6 SPOOL (W/O EXT DIPPER, W/O 2 LEVERS)
35.726.16	05	VALVE - BACKHOE CONTROL, 6 SECTIONS
35.726.16	06	VALVE - BACKHOE CONTROL, 6 SECTIONS
35.726.1601		VALVE - BACKHOE CONTROL, 7 SPOOL (W/ EXT DIPPER, W/O AUX, W/O PILOT CONTROLS)

TABLE OF CONTENTS

35.726.1602		BACKHOE CONTROL VALVE, 6 SECTIONS - STANDARD DIPPER W/ PILOT CONTROLS
35.726.1603		BACKHOE CONTROL VALVE, 8 SECTIONS - EXTENDABLE DIPPER AUXILIARY HYDRAULIC - W/ PILOT CONTROLS
35.726.1604		BACKHOE CONTROL VALVE, 7 SECTIONS - EXTENDABLE DIPPER W/O PILOT CONTROLS
35.726.1605		BACKHOE CONTROL VALVE, 7 SECTIONS - STANDARD DIPPER AUXILIARY HYDRAULIC - W/O PILOT CONTROLS
35.726.1606		BACKHOE CONTROL VALVE, 7 SECTIONS - EXTENDABLE DIPPER W/ PILOT CONTROLS
35.726.1607		BACKHOE CONTROL VALVE, 7 SECTIONS - EXTENDABLE DIPPER W/ PILOT CONTROLS
35.726.1608		BACKHOE CONTROL VALVE, 7 SECTIONS - STANDARD DIPPER AUXILIARY HYDRAULIC - W/ PILOT CONTROLS
35.726.1609		BACKHOE CONTROL VALVE, 8 SECTIONS - EXTENDABLE DIPPER AUXILIARY HYDRAULIC - W/O PILOT CONTROLS
35.726.17		VAR - X20036X - SUPPORT - EXTENDABLE DIPPER
35.726.1801		AUXILIARY HYDRAULIC - STANDARD DIPPER
35.726.19	02	MOUNTING PARTS, BACKHOE CONTROL VALVE, 6 SECTIONS - STANDARD DIPPER W/ PILOT CONTROLS
35.726.1901		AUX HYDS PARTS FOR EXTHOE
35.726.1903		VALVE INSTALL - BACKHOE CONTROL, 6 SPOOL (FOOT SWING)
35.726.1904		VALVE INSTALL - BACKHOE CONTROL, 6 SPOOL (FOOT SWING)
35.726.1905		VALVE INSTALL - BACKHOE CONTROL, 7 SPOOL W/ STAN DIPPER (W/ 2 LEVER)
35.726.1906		VALVE INSTALL - BACKHOE CONTROL, 6 SPOOL (FOOT SWING)
35.726.1907		VALVE INSTALL - BACKHOE CONTROL, 7 SPOOL W/ STAN DIPPER (W/ 2 LEVER)
35.726.1908		VALVE INSTALL - BACKHOE CONTROL, 8 SPOOL
35.726.1909		VALVE INSTALL - BACKHOE CONTROL, 8 SPOOL (FOOT SWING)
35.726.1910		VALVE INSTALL - BACKHOE CONTROL, 8 SPOOL (FOOT SWING)
35.726.1911		VALVE INSTALL - BACKHOE CONTROL, 6 SPOOL (FOOT SWING)
35.726.1912		VALVE INSTALL - BACKHOE CONTROL, 7 SPOOL (FOOT SWING)
35.726.21		VALVE, SINGLE COUPLER - LOADER TOOL OR BACKHOE
35.726.24		AUX HYDS PARTS FOR STD DIPPER
35.726.25		VALVE INSTALL - SINGLE COUPLER
35.726.2503		COUPLER VALVES FOR FOR PILOT CONTROLS
35.726.26	01	CONTROL, TOWER STRUCTURE
35.726.26	02	CONTROL, TOWER STRUCTURE
35.726.26	03	CONTROL, TOWER STRUCTURE
35.726.26	04	DAMPING VALVE, LEVER ASSY & KNOB - W/ PILOT CONTROLS

TABLE OF CONTENTS

35.726.27		VAR - 742369 - CONTROL - BACKHOE, 2 LEVER
35.726.28		JOYSTICK CONTROL KIT - HYDR LINES
35.726.29		CONTROL - BACKHOE, SWING STD DIPPER
35.726.30	02	CONTROL - BACKHOE, WITH FOOT SWING (WITH EXTENDABLE DIPPER)
35.726.31		VALVE INSTALL - SWING CUSHION (DAMPENING)
35.726.32		CONTROL - BACKHOE, 2 LEVER
35.726.36	01	CONTROL - BACKHOE, WITH FOOT SWING (WITHOUT EXTENDABLE DIPPER)
35.726.36	02	CONTROL - BACKHOE, WITH FOOT SWING (WITHOUT EXTENDABLE DIPPER)
35.726.39		HYDRAULIC SYSTEM
35.726.40		HYDRAULIC SYSTEM
35.726.41		HYDRAULIC SYSTEM
35.726.43		HYDRAULIC SYSTEM
35.726.45		VALVE - PILOT CONTROL AND JOYSTICKS (6 SPOOL, W/O EXT DIPPER, W/O AUX HYDS)
35.726.4502		VALVE - PILOT CONTROL AND JOYSTICKS (6 SPOOL, W/O EXT DIPPER, W/O AUX HYDS)
35.726.46		VALVE - PILOT CONTROL AND JOYSTICKS (7 SPOOL, W/ EXT DIPPER, W/O AUX HYDS)
35.726.4602		VALVE - PILOT CONTROL AND JOYSTICKS (7 SPOOL, W/ EXT DIPPER, W/O AUX HYDS)
35.726.47		VALVE - PILOT CONTROL AND JOYSTICKS (7 SPOOL, W/O EXT DIPPER W/ AUX HYDS)
35.726.48		VALVE - PILOT CONTROL AND JOYSTICKS (8 SPOOL, W/ EHOE, W/ AUX HYDS)
35.726.49	01	JOYSTICK - BACKHOE CONTROL VALVE - 7 SECTIONS AUXILIARY HYDRAULIC - W/OUT EXTENDABLE DIPPER
35.726.49	02	JOYSTICK - BACKHOE CONTROL VALVE - 7 SECTIONS AUXILIARY HYDRAULIC - W/OUT JOYSTICK - BACKHOE CONTROL VALVE - 7 SECTIONS AUXILIARY HYDRAULIC - W/OUT EXTENDABLE DIPPER
35.726.50		HYDRAULICS - VALVE, JOYSTICK (PILOT CONTROLS) (LEFT-HAND) WITH HORN
35.726.5001	01	JOYSTICK - LH, HORN - BACKHOE CONTROL VALVE, 6 SECTIONS AUXILIARY HYDRAULIC
35.726.5001	02	VALVE - JOYSTICK - LH, HORN - BACKHOE CONTROL VALVE, 6 SECTIONS AUXILIARY HYDRAULIC
35.726.51		JOYSTICK - RH - BACKHOE CONTROL VALVE - 7 SECTIONS AUXILIARY HYDRAULIC - W/ EXTENDABLE DIPPER
35.726.52		JOYSTICK - LH, HORN, BI-DIR - BACKHOE CONTROL VALVE - 7 SECTIONS AUXILIARY HYDRAULIC
35.726.53		2-SPOOL CONTROL VALVE - PRESSURE CONTROL VALVE - W/ PILOT CONTROLS

TABLE OF CONTENTS

35.726.54		3-SECTION CONTROL VALVE - PRESSURE CONTROL VALVE - W/ PILOT CONTROLS
35.726.55		VALVE - PRESSURE LIMITER - 4-SPOOL - W/ PILOT CONTROLS
35.726.56	01	BACKHOE CONTROL VALVE, 6 SECTIONS - W/OUT EXTENDABLE DIPPER, GEAR PUMP W/ PILOT CONTROLS C9006
35.726.56	01A	VALVE, BACKHOE CONTROL VALVE - 6 SECTIONS D9006
35.726.56	02	BACKHOE CONTROL VALVE - INLET SECTION
35.726.56	03	BACKHOE CONTROL VALVE - SWING SECTION C9006
35.726.56	03A	BACKHOE CONTROL VALVE, SWING SECTION D9006
35.726.56	04	BACKHOE CONTROL VALVE - SWING SECTION
35.726.56	05	BACKHOE CONTROL VALVE - STABILIZER SECTION
35.726.56	06	BACKHOE CONTROL VALVE - DIPPER SECTION
35.726.56	07	BACKHOE CONTROL VALVE - BUCKET SECTION
35.726.56	08	BACKHOE CONTROL VALVE - OUTLET SECTION
35.726.57	01	VALVE - BACKHOE CONTROL, 7 SPOOL (W/ EXT DIPPER, W/O AUX, W/ PILOT CONTROLS) C9006
35.726.57	01A	BACKHOE CONTROL VALVE, 7 SECTIONS D9006
35.726.57	02	BACKHOE CONTROL VALVE - EXTENDABLE DIPPER
35.726.58	01	VALVE - BACKHOE CONTROL, 7 SPOOL (W/O EXT DIPPER, W/ AUX HYDS, W/ PILOT CONTROLS) C9006
35.726.58	01A	BACKHOE CONTROL VALVE, 7 SECTIONS D9006
35.726.58	02	VALVE - BACKHOE CONTROL, 7 SPOOL (W/O EXT DIPPER, W/ AUX HYDS, W/ PILOT CONTROLS)
35.726.59	01	VALVE - BACKHOE CONTROL, 8 SPOOL (W/O EXT DIPPER, W/ AUX HYDS, W/ PILOT CONTROLS) C9006
35.726.59	02	BACKHOE CONTROL VALVE, 8 SECTIONS D9006
35.726.61		HYDRAULICS - PILOT CONTROLS, DUAL AUX. (8 SPOOL)
35.726.6101		HYDRAULICS - PILOT CONTROLS, DUAL AUX. (7 SPOOL)
35.726.63		FITTING INSTALL - NO BACKHOE AUX
35.732.01	01	VAR - X20233X - HYDRAULICS - BACKHOE STABILIZER
35.732.01	02	VAR - X20233X - VALVE
35.732.01	03	VAR - X20233X - HYDRAULICS - CHECK VALVE INSTALL, STABILIZER
35.734.01		VAR - 423049 - COUPLER, TOOL QUICK
35.736.0101	01	BOOM CYLINDER - C9004
35.736.0101	02	BOOM CYLINDER - D9004
35.737.0101		DIPPER CYLINDER LINES
35.737.0201	01	DIPPER CYLINDER - C9057

TABLE OF CONTENTS

35.737.0201	02	DIPPER CYLINDER - D9057
35.738.01		VAR - 423075, 423076 - BACKHOE ARM, BUCKET CYLINDER, COMPONENTS
35.738.02		VAR - 423075 - HOE, STANDARD , BUCKET CYLINDER, LINE
35.738.03		VAR - 423076 - EXTENDABLE DIPPER, BUCKET CYLINDER, LINE
35.739.0101		SWING CYLINDER ATTACHMENT - HYDR LINES
35.739.0201		CYLINDER - BACKHOE SWING
35.740.01		VAR - 423076 - BACKHOE ARM, EXTENDABLE DIPPER, CYLINDER
35.740.02		VAR - 423076 - BACKHOE ARM, EXTENDABLE DIPPER, HYDRAULIC LINE, CYLINDER
37.000.00		PICTORIAL INDEX - TOWING HOOK AND BALLASTING
37.140.01		VAR - X40020X - COUNTERWEIGHT, FRONT
37.140.02		VAR - 747580 - COUNTERWEIGHT, FRONT
37.140.03		VAR - 423010 - COUNTERWEIGHT, FRONT
37.140.04		VAR - 423047 - COUNTERWEIGHT, FRONT
39.000.00		PICTORIAL INDEX - CHASSIS
39.100.01		CHASSIS
39.100.02		CHASSIS
39.129.01		CHASSIS
39.129.02		VAR - 423002 - STABILIZER, PIN
39.129.03		VAR - 442055 - STABILIZER, PAD, STANDARD
39.129.0301		VAR - 442056 - STABILIZER PADS, STABILIZER, PAD, FLIP
39.129.0302		VAR - 442057 - CEMETERY STABILIZER PAD
41.000.00	01	PICTORIAL INDEX - STEERING
41.000.00	02	PICTORIAL INDEX - STEERING
41.101.01		VAR - 742651 - ADJUSTABLE STEERING COLUMN, CAB
41.101.02		VAR - 742651 - ADJUSTABLE STEERING COLUMN, CAB
41.101.03		STEERING COLUMN, CAB
41.101.04		VAR - 423000, 442082 - STEERING COLUMN, CANOPY
41.200.03		VAR - X05112X - STEERING VERSION
41.200.05		HYDRAULICS - STEERING
41.216.01		VAR - 423000 - AXLE, FRONT - CYLINDER, STEERING - 2WD
41.216.06		AXLE, FRONT DRIVE - CYLINDER, STEERING STD ACP
44.000.00	01	PICTORIAL INDEX - AXLE AND WHEELS - FRONT
44.000.00	02	PICTORIAL INDEX - AXLE AND WHEELS - FRONT

TABLE OF CONTENTS

44.511.01		VAR - 423015 - WHEELS, FRONT - TIRES
44.511.0101		VAR - 9200019 - WHEELS, FRONT - TIRES
44.511.05		VAR - 442095 - WHEELS, FRONT - TIRES
44.511.0501		VAR - 8101110 - WHEELS, FRONT - TIRES
44.511.06		VAR - 8101110 - WHEELS, FRONT - TIRES
44.520.02		WHEELS, REAR - TIRES
44.520.0201		WHEELS, REAR - TIRES
44.520.0202		WHEELS, REAR - TIRES
44.520.03		WHEELS, REAR - TIRES
44.520.0301		VAR - 442101 - WHEELS, REAR - TIRES
50.000.00		PICTORIAL INDEX - CAB CLIMATE CONTROL
50.104.01		CAB - HEATER
50.200.01		AIR CONDITIONING
50.200.02		CAB AIR CONDITIONING (HOT/COLD) - COMPRESSOR TO RADIATOR PIPES
50.200.03		CAB - AIR CONDITIONING LINES, EVAPORATOR CORE
50.200.04		CAB - FILTER, AIR
50.200.05		CAB - BLOWER HOUSING, VENTILATION DUCTS, DRAIN LINES
50.200.06		CAB - AIR CONDITIONING, CONDENSER, RECEIVER-DRIER
55.000.00	01	PICTORIAL INDEX - ELECTRICAL SYSTEM
55.000.00	02	PICTORIAL INDEX - ELECTRICAL SYSTEM
55.000.00	03	PICTORIAL INDEX - ELECTRICAL SYSTEM
55.000.00	04	PICTORIAL INDEX - ELECTRICAL SYSTEM
55.011.01		FUEL TANK - FUEL GAUGE
55.014.01		MUFFLER - SENSOR
55.014.02		SWITCH AIR RESTRICTION
55.015.01		ECU
55.020.01		VAR - 423060 - ELECTRICAL PARTS - TRANSMISSION - POWERSHIFT S TYPE
55.020.02		VAR - 423061 - ELECTRICAL PARTS - TRANSMISSION - 4WD POWERSHIFT S TYPE
55.021.01		TRANSMISSION - 4WD POWERSHIFT H TYPE - VALVE, CONTROL
55.023.01		VAR - 423060 - TRANSMISSION - POWERSHIFT S-TYPE - SHIFTER MECHANISM
55.023.02		VAR - 423011 - COMFORT STEER - SHIFTER MECHANISM
55.024.01		TRANSMISSION - 4WD POWERSHIFT H TYPE - VALVE, CONTROL

TABLE OF CONTENTS

55.024.03		VAR - 423060, 423061, 423062 - CONTROL UNIT, TRANSMISSION
55.031.01		VAR - 423058, 423059, 423060. 423061, 423062 - PARKING BRAKE, CONTROL VALVE, SOLENOID
55.031.02		VAR - 423058, 423059, 423060. 423061, 423062 - PARKING BRAKE, PRESSURE SWITCH
55.031.03		STOP LIGHT, PRESSURE SWITCH
55.047.01		VAR - 423011 - COMFORT STEERING
55.051.01		BLOWER SWITCH
55.100.01		ELECTRICAL PARTS - ENGINE INSTALL - INSTRUMENTS
55.100.02		MAIN FRAME – HARNESS – W/ STANDARD TRANSMISSION – W/ CAB
55.100.0201		MAIN FRAME – HARNESS – W/ POWER TRANSMISSION – W/ CAB
55.100.0202		MAIN FRAME – HARNESS – W/ STANDARD TRANSMISSION – W/O CAB
55.100.0203		MAIN FRAME – HARNESS – W/ POWER TRANSMISSION – W/O CAB
55.100.03		ELECTRICAL - STANDARD RIDE CONTROL
55.100.06		ELECTRICAL PARTS - PUMP
55.100.30		VAR - 423060, 423061 - HARNESS, TRANSMISSION 2WD / 4WD POWERSHIFT S-TYPE - CONTROL VALVE
55.201.01	01	STARTER MOTOR C9003
55.201.01	02	STARTER MOTOR, D9003
55.202.01		VAR - 423088 - ENGINE BLOCK HEATER
55.301.01		ALTERNATOR
55.302.01		VAR - 423093 - DUAL BATTERIES
55.302.02		SINGLE BATTERY
55.302.03	01	VAR - 747874 - REMOTE JUMP START C9003
55.302.03	02	VAR - 747874 - REMOTE JUMP START D9003
55.302.04		STARTER JUMPER
55.404.01	01	VAR - 442082 - CANOPY, WORKING LIGHT
55.404.01	02	CANOPY, WORKING LIGHT
55.404.02	01	VAR - 423000 - CANOPY, LAMP
55.404.02	02	VAR - 423000 - CANOPY, LAMP
55.404.03		VAR - 423000, 442082 - CANOPY TRACTOR LAMPS, STOP AND TAIL LAMPS AND TURN SIGNAL AND FLASHER LAMPS
55.404.04		VAR - 423000, 442082 - CANOPY TRACTOR LAMPS, STOP AND TAIL LAMPS AND TURN SIGNAL AND FLASHER LAMPS
55.404.05		VAR - 728758 - ROTATING BEACON
55.404.07		VAR - 747853, 747854, 747855 - LAMP

 TABLE OF CONTENTS

55.404.08		VAR - 442082 - ELECTRICAL - LAMPS, ROPS CANOPY
55.408.01		ELECTRICAL - ALARM ASM - BACKUP
55.408.02		ELECTRICAL - HORN ASSY, N SERIES
55.408.03		VAR - 423060, 423061 - INSTRUMENT CLUSTER
55.408.08		BRAKE SYSTEM AND CLUTCH PEDAL SWITCHES
55.415.01		ELECTRICAL-SWITCH LIMIT W/ROLLER
55.511.01		VAR - X06026X - HARNESS INSTALL, AND LIGHT CANOPY STD
55.512.01		VAR - 442083 - HARNESS - DUAL AUX MECH CONTROL
55.512.02		VAR - 423084 - HARNESS - DUEL AUX PILOT CONTROL
55.512.03		VAR - 747661 - HARNESS - HAMMER ONLY MECH CONTROL
55.512.04		VAR - 747662 - HARNESS - SINGLE AUX PILOT CONTROL
55.512.05		ELECTRICAL - SIDE CONSOLE, S AND H TYPE TRANSMISSION
55.512.06		ELECTRICAL - INSTRUMENT CLUSTER
55.512.07		ELECTRICAL - F5C
55.512.08		ELECTRICAL - GCU
55.512.09		ELECTRICAL - HEAVY LIFT
55.512.15	01	VAR - 423058, 423059 - HARNESS, INSTALL - FRONT CONSOLE, STANDARD TRANSMISSION
55.512.15	02	VAR - 423058, 423059 - HARNESS - FRONT CONSOLE STD, STANDARD TRANSMISSION
55.512.17	01	VAR - 423058, 423059 - HARNESS INSTALL - SIDE CONSOLE, STANDARD TRANSMISSION
55.512.17	02	VAR - 423058, 423059 - HARNESS INSTALL - SIDE CONSOLE, STANDARD TRANSMISSION
55.512.21		HARNESS, INSTALL
55.512.24	01	INSTRUMENT PANEL, HARNESS (STANDARD) - TRANSMISSION (STANDARD)
55.512.24	02	INSTRUMENT PANEL, FUSE BOX (STANDARD) - TRANSMISSION (STANDARD)
55.512.2401	01	INSTRUMENT PANEL, HARNESS (STANDARD) - TRANSMISSION (POWERSHIFT)
55.512.2401	02	INSTRUMENT PANEL, FUSE BOX (STANDARD) - TRANSMISSION (POWERSHIFT)
55.512.2402	01	INSTRUMENT PANEL, HARNESS (OPTION) - TRANSMISSION (STANDARD)
55.512.2402	02	INSTRUMENT PANEL, FUSE BOX (OPTION) - TRANSMISSION (STANDARD)
55.512.2403	01	INSTRUMENT PANEL, HARNESS (OPTION) - TRANSMISSION (POWERSHIFT)
55.512.2403	02	INSTRUMENT PANEL, FUSE BOX (OPTION) - TRANSMISSION (POWERSHIFT)