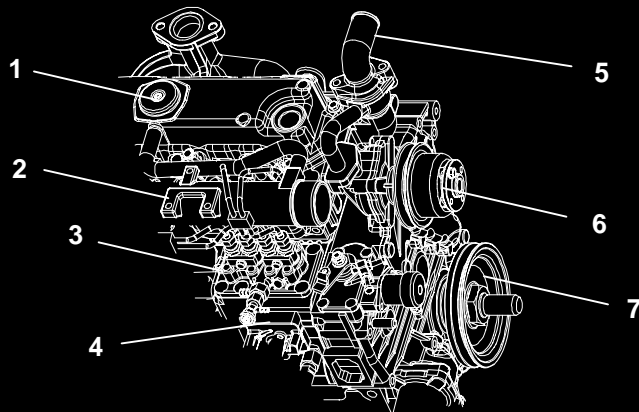


**Carrier** Diesel Engine



**SERVICE PARTS LIST**  
for  
**V2203-DI (26-00118)**  
**VECTOR**



**TRANSICOLD**

---

# **SERVICE PARTS LIST**

## **DIESEL ENGINE**

**V2203-DI (26-00118)**

# TABLE OF CONTENTS

INTRODUCTION .....	i
REPLACEMENT ENGINE PART NO. ....	i
ENGINE SERIAL NUMBER MATRIX .....	i
ORDERING INSTRUCTIONS .....	i
GENERAL NOTES .....	i
1. CRANKCASE .....	1
2. OIL PUMP .....	2
3. MAIN BEARING CASE .....	3
4. PISTON AND CRANKSHAFT .....	4
5. FUEL CAMSHAFT .....	6
6. CAMSHAFT AND IDLE GEAR SHAFT .....	7
7. FLYWHEEL AND BELL HOUSING .....	8
8. OIL PAN .....	9
9. DIPSTICK .....	10
10. THERMOSTAT .....	11
11. WATER PUMP .....	12
12. PULLEY .....	13
13. GEAR CASE .....	14
14. OIL FILTER .....	15
15. STOP SOLENOID .....	16
16. ENGINE STOP LEVER .....	17
17. GOVERNOR .....	18
18. SPEED CONTROL PLATE .....	19
19. INJECTION PUMP .....	20
20. INJECTORS AND GLOW PLUGS .....	21
21. FUEL PUMP .....	22
22. FUEL PUMP ASSEMBLY .....	23
23. VALVE COVER / BREATHER .....	24
24. CYLINDER HEAD .....	25
25. VALVES AND ROCKER ARMS .....	26
26. PLUG .....	27
27. INTAKE MANIFOLD .....	28
28. EXHAUST MANIFOLD .....	29
29. STARTER ASSEMBLY .....	30
30. STARTER .....	31
31. GASKET SET .....	32
PART NUMBER INDEX .....	Index-1

# Carrier V2203 Di 26 00118 Vector Diesel Engine Service Parts List

Full download: <http://manualplace.com/download/carrier-v2203-di-26-00118-vector-diesel-engine-service-parts-list/>

## INTRODUCTION

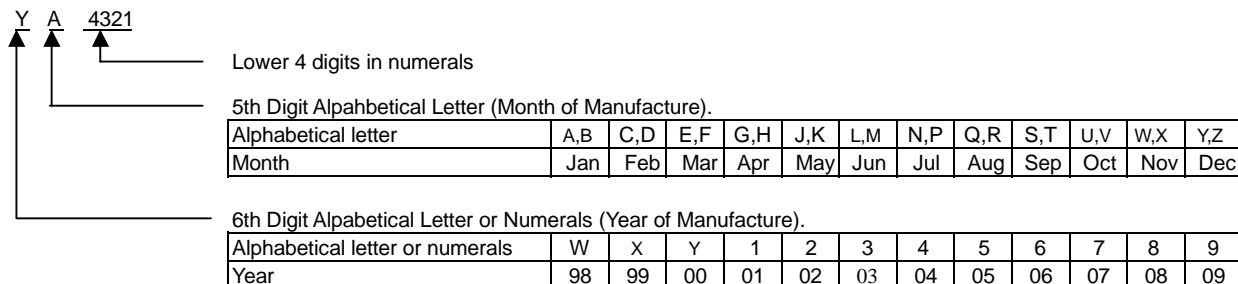
This Parts List identifies service replacement parts for the Carrier Transicold models listed in Table 1-1. These diesel engines are manufactured exclusively for Carrier Transicold transport refrigeration by Kubota.

**Table 1-1. Model Chart**

MODEL NO.	ENGINE TYPE	NEW ENGINE PART NO.	PRIMARY USE	REPLACES
V2203-DI-E2B-CTD-5	CT4-134-DI (2200 RPM)	26-00118-00	Vector	New

## ENGINE SERIAL NUMBER MATRIX

### New Serial Number:



## ORDERING INSTRUCTIONS

All orders and inquiries for parts must include:

- Unit Serial Number
- Part No.
- Description of Part
- Quantity Required

Address all correspondence for parts to the following address:

CARRIER TRANSICOLD DIVISION  
 Replacement Components Group, TR-20  
 P.O. Box 4805, Syracuse, NY 13221

or  
 Fax to : (315) 432-3778

## GENERAL NOTES

To find replacement parts, consult table of contents, and turn to the appropriate page for the illustrated breakdown of replacement parts. The following letter designations are used to classify parts throughout this list:

- |     |                                |     |  |
|-----|--------------------------------|-----|--|
| A/R | As Required                    | NSS | Not Sold Separately - order next higher assembly or kit. |
| NS  | Not Shown in the illustration. | PL  | Purchase Locally.  |