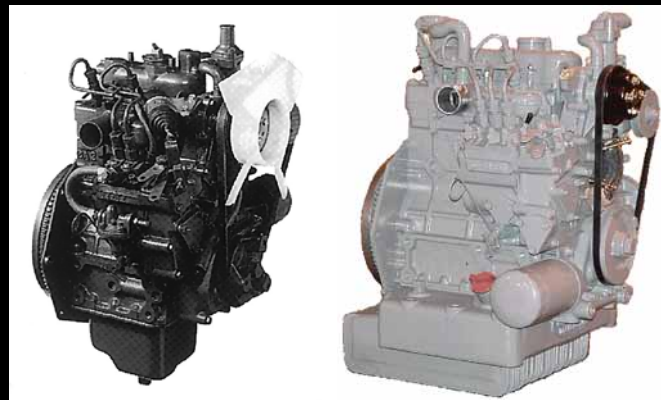
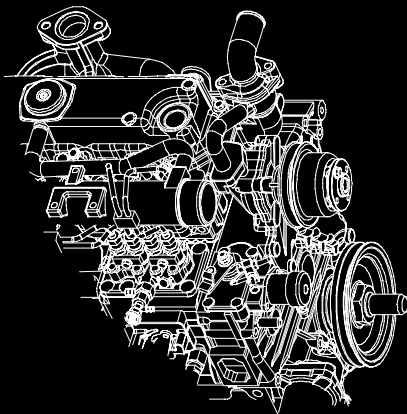




Diesel Engine



WORKSHOP MANUAL

for

CT2-29-TV (Z482-E2B)

Truck / ComfortPro

CT3-44-TV (D722-E2B)

Truck

Beginning With Serial Number 5A0001

62-11161 Rev A



TRANSICOLD

WORKSHOP MANUAL

DIESEL ENGINE

CT2-29-TV (Z482-E2B)

Truck / ComfortPro

CT3-44-TV (D722-E2B)

Truck

Beginning With Serial Number 5A0001

TABLE OF CONTENTS

PARAGRAPH NUMBER	Page
TABLE OF CONTENTS	i
SAFETY PRECAUTIONS	i
SPECIFIC WARNING AND CAUTION STATEMENTS	i
General	1-1
1.1 ENGINE IDENTIFICATION	1-1
1.2 ENGINE SPECIFICATIONS	1-2
1.2.1 E2B Engine	1-3
1.2.2 Cylinder Number	1-3
1.3 GENERAL PRECAUTIONS	1-3
1.4 TORQUE SPECIFICATION	1-4
1.4.1 Torque Specifications For Special Use Screws, Bolts and Nuts	1-4
1.4.2 Torque Specifications For General Use Screws, Bolts and Nuts	1-4
1.5 TROUBLESHOOTING	1-5
1.6 SERVICING SPECIFICATIONS	1-8
1.6.1 Engine Body	1-8
1.6.2 Lubricating System	1-11
1.6.3 Cooling System	1-11
1.6.4 Fuel System	1-11
1.6.5 Electrical System	1-12
1.7 CHECK AND MAINTENANCE	1-12
1.7.1 Checking Engine Oil Level	1-12
1.7.2 Changing Engine Oil	1-12
1.7.3 Checking Coolant Level	1-12
1.7.4 Checking Fuel Hose	1-12
1.7.5 Bleeding Fuel System	1-12
1.7.6 Valve Clearance	1-13
1.8 SPECIAL TOOLS	1-14
1.8.1 Diesel Engine Compression Tester (Glow Plug)	1-14
1.8.2 Adapter, Kubota 10 mm	1-14
1.8.3 Tester Injector Nozzle	1-14
1.8.4 Replacement Bowl, Tester Injector Nozzle	1-14
1.8.5 Adapter, Injector Line	1-14
1.8.6 Oil Pressure Tester	1-15
1.8.7 Auxilliary Socket For Fixing Crankshaft Sleeve	1-15
1.8.8 Guage, Belt Tension	1-15
1.8.9 Tester, Belt Tension	1-15
1.8.10 Rubber Band	1-15
1.8.11 Valve Guide Replacing Tool	1-16
1.8.12 Bushing Replacing Tools	1-16
1.8.13 Flywheel Stopper	1-16
1.8.14 Crankshaft Bearing 1 Replacing Tool	1-17

PARAGRAPH NUMBER	Page
ENGINE BODY	2-1
2.1 CHECKING AND ADJUSTING	2-1
2.1.1 Compression Pressure	2-1
2.1.2 Top Clearance	2-1
2.2 DISASSEMBLING AND ASSEMBLING	2-2
2.2.1 Draining Coolant	2-2
2.2.2 Draining and Refilling Engine Oil	2-2
2.2.3 External Components	2-2
2.2.4 Cylinder Head And Valves	2-3
2.2.5 Oil Pan and Oil Pick-up Screen	2-6
2.2.6 Timing Gear, Camshaft and Fuel Camshaft	2-7
2.2.7 Piston and Connecting Rod	2-13
2.2.8 Crankshaft	2-16
2.3 SERVICING	2-19
2.3.1 Cylinder Head And Valves	2-19
2.3.2 Timing Gears, Camshaft and Fuel Camshaft	2-25
2.3.3 Piston and Connecting Rod	2-28
2.3.4 Crankshaft	2-30
2.3.5 Cylinder	2-36
LUBRICATING SYSTEM	3-1
3.1 CHECKING AND ADJUSTING	3-1
3.1.1 Checking Engine Oil Level	3-1
3.1.2 Changing Engine Oil	3-1
3.1.3 Changing Oil Filter	3-2
3.1.4 Engine Oil Pressure	3-2
3.1.5 Relief Valve	3-3
3.2 OIL PUMP SERVICE	3-3
3.2.1 Rotor Lobe Clearance	3-3
3.2.2 Rotor to Cover Clearance	3-3
COOLING SYSTEM	4-1
4.1 CHECKING AND ADJUSTING	4-1
4.1.1 V-Belt Tension	4-1
4.1.2 Fan Belt Damage and Wear	4-1
4.1.3 Checking Coolant Level	4-1
4.1.4 Draining Coolant	4-1
4.1.5 Radiator Cap	4-2
4.1.6 Radiator	4-2
4.1.7 Thermostat Opening Temperature	4-2
4.2 SERVICING	4-3
4.2.1 Thermostat Assembly	4-3
4.2.2 Water Pump Assembly	4-3

PARAGRAPH NUMBER	Page
FUEL SYSTEM	5-1
5.1 CHECKING AND ADJUSTING	5-1
5.1.1 Injection Timing	5-1
5.1.2 Shim Identification	5-1
5.1.3 Pump Element Fuel Seal	5-2
5.1.4 Delivery Valve Fuel Seal	5-2
5.2 INJECTION NOZZLE	5-3
5.2.1 Nozzle Spraying Condition	5-3
5.2.2 Nozzle Injection Pressure	5-3
5.2.3 Valve Seat Tightness	5-4
5.2.4 Nozzle Holder	5-4
ELECTRICAL SYSTEM	6-1
6.1 GLOW PLUG	6-1
6.1.1 Lead Terminal Voltage	6-1
6.1.2 Glow Plug Continuity	6-1
6.2 STARTER (CT2-29-TV)	6-2
6.2.1 Motor Test	6-2
6.2.2 Magnetic Switch Test	6-2
6.2.3 Assembly	6-3
6.3 STARTER (CT3-44-TV)	6-4
6.3.1 Motor Test	6-4
6.3.2 Magnetic Switch Test	6-4
6.4 STARTER SERVICING	6-6
6.4.1 Overrunning Clutch	6-6
6.4.2 Armature Bearing	6-6
6.4.3 Brush Wear	6-6
6.4.4 Solenoid	6-6
6.4.5 Brush Holder	6-6
6.4.6 Armature	6-7
6.4.7 Field Coil	6-8

SAFETY

SAFETY PRECAUTIONS

Your Carrier Transicold unit has been designed with the safety of the operator in mind. During normal operation, all moving parts are fully enclosed to help prevent injury. During all pretrip inspections, daily inspections, and problem troubleshooting, you may be exposed to moving parts. Please stay clear of all moving parts when the unit is in operation and when the unit main power switch is in the START/RUN position.

Engine Coolant

The engine is equipped with a pressurized cooling system. Under normal operating conditions, the coolant in the engine and radiator is under high pressure and is very hot. Contact with hot coolant can cause severe burns. Do not remove the cap from a hot radiator. If the cap must be removed, do so very slowly in order to release the pressure without spray.

Battery

This unit is equipped with a leadacid type battery. The battery normally vents small amounts of flammable hydrogen gas. Do not smoke when checking the battery. A battery explosion can cause serious physical harm and/or blindness.

SPECIFIC WARNING AND CAUTION STATEMENTS

To help identify the label hazards on the unit and explain the level of awareness each one carries, an explanation is given with the appropriate consequences:



DANGER - warns against an immediate hazard which **WILL** result in severe personal injury or death.



WARNING - warns against hazards or unsafe conditions which **COULD** result in severe personal injury or death.



CAUTION - warns against potential hazard or unsafe practice which could result in minor personal injury, or product or property damage.

NOTE

NOTE - gives helpful information that may help and avoid equipment and property damage.

The statements listed on the next page are specifically applicable to this unit and appear elsewhere in this manual. These recommended precautions must be understood and applied during operation and maintenance of the equipment covered herein.

SPECIFIC WARNING AND CAUTION STATEMENTS (Continued)

 **WARNING**

When removing the radiator cap, wait at least ten minutes after the engine has stopped and cooled down. Otherwise, hot water may discharge from the radiator, scalding anyone nearby.

 **WARNING**

Check the injection nozzle only after confirming that nobody is near the spray. If the spray from the nozzle contacts the human body, cells may be destroyed and blood poisoning may result.

 **CAUTION**

Stop the engine when attempting to check and change the fuel line.

 **CAUTION**

Stop the engine when preparing to change the engine oil.

 **CAUTION**

Stop the engine when preparing to change the engine oil filter.

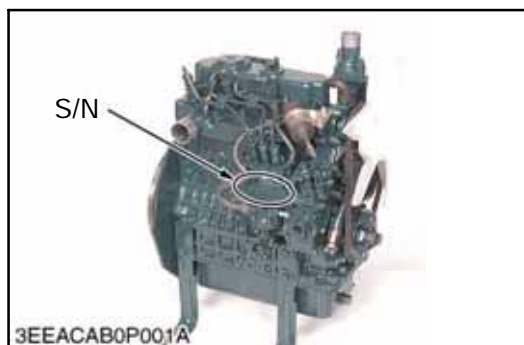
 **CAUTION**

Secure the starter to prevent it from moving when power is applied to it.

SECTION 1

General

1.1 ENGINE IDENTIFICATION



When contacting Carrier Transcold, always specify your engine model number and serial number.

The engine model and its serial number need to be identified before the engine can be serviced or parts replaced.

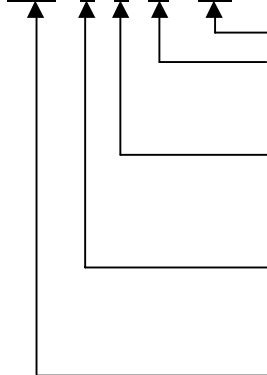
Engine Serial Number (S/N)

The engine serial number is an identified number for the engine. It is marked after the engine model number.

It indicates basic model, month, year and sequence of manufacture as follows:

Serial Number

Z482- 7 K A 176



Last 3 Digits in Numerals (1 to 999 Units in Sequence)

7th Digit Sequential Numeral or Letter (Units Manufactured)

Alphabetical Numeral or Letter	0 to 9	A	B	C
Unit Number Sequence	to 19,998	19,999-20997	20,998-21,996	21,997-22,995

6th Digit Alphabetical Letter (Month of Manufacture - 1st Letter 1-9999 Units, 2nd Letter 10,000-19,998 Units)

Alphabetical letter	A,B	C,D	E,F	G,H	J,K	L,M	N,P	Q,R	S,T	U,V	W,X	Y,Z
Month	Jan	Feb	Mar	Apr	May	Jun	Jul	Aug	Sep	Oct	Nov	Dec

5th Digit Alphabetical Letter or Numerals (Year of Manufacture)

Alphabetical letter or numerals	W	X	Y	1	2	3	4	5	6	7	8	9
Year	98	99	00	01	02	03	04	05	06	07	08	09

Basic model number

Table 1-1. Model Chart

KUBOTA MODEL NO.	CARRIER MODEL NO.	NEW ENGINE PART NO.	PRIMARY USE	REPLACES
Z482-E2B	CT2-29-TV	26-60001-03*	SOLARA Units	26-60001-01
Z482-E2B	CT2-29-TV	26-60001-04*	SUPRA Units	26-60001-02
Z482-E2B-ATC-1	CT2-29-TV	96-101-05K	ProHeat / ComfortPro PC5000 Units	NEW
Z482-E2B-TFX-1	CT2-29-TV	96-101-20K	ComfortPro PC6000 Units	NEW
D722-E2B	CT3-44-TV	26-60000-05*	GENESIS Units	26-60000-00

* Beginning with Serial Number 5A0001