



Condor® Self-Propelled Aerial Work Platforms WARRANTY

Calavar Corporation ("Calavar") warrants to the purchaser that each new aerial work platform made by Calavar is free from defects in material and workmanship arising under normal use and service—in the case of major weldments, (chassis, turret, and booms), for a period of five (5) years after the original shipment of the aerial work platform from Calavar's plant; and in the case of all other parts, for a period of one (1) year after the aerial work platform is placed in service or two (2) years after the original shipment of the aerial work platform from Calavar's plant, whichever comes first.

The obligation and liability under this Warranty is expressly limited to repairing or, at Calavar's option, replacing free of charge at its factory or at an authorized repair facility designated by Calavar, the defective part. In no event shall Calavar or its suppliers be liable to the purchaser or any other person for transportation charges or for any incidental, collateral, special, or consequential damages, including without limitation damages for loss of profits, loss of customers, loss of goodwill or work stoppage, claims by any party other than the purchaser, or any other similar damage or loss even if Calavar, its suppliers, or its representatives have been advised of the possibility of such damages.

Parts claimed to be defective and for which repair or replacement is desired shall be returned transportation prepaid to Calavar's factory for inspection. This Warranty applies to replacement parts provided under the terms of this Warranty only for the remainder of the Warranty period applicable to the original purchase.

Any operation of the equipment beyond rated capacity, improper use or application of the equipment, substitution upon it of parts not approved by Calavar or alteration or repair of the equipment by any person not authorized by Calavar shall, at Calavar's option, void this Warranty. Calavar shall have no liability or responsibility for damages resulting from accident or the malfunction of equipment and components not supplied by Calavar.

No agent, employee, distributor, dealer, or other representative of Calavar is authorized to modify this Warranty in any way. Accordingly, additional statements or presentations by any such representative, whether oral or written, do not constitute warranties by Calavar and should not be relied upon as limited warranties of Calavar, and no attempt, effort, or promise to repair equipment by Calavar or any such representative at any time shall modify or extend this Warranty in any way. If the purchaser has used its own order form, no additional or different warranty terms contained in the purchaser's form will be honored by Calavar. This Warranty covers only new and unused aerial work platforms manufactured by Calavar. Products or parts manufactured by others are covered only by such warranties as are extended to the purchaser by Calavar's suppliers.

This Warranty is in lieu of all other warranties, expressed or implied, including but not limited to warranties of merchantability and fitness for a particular purpose. Any applicable implied warranty shall be limited in duration to the warranty period.

8300 Imperial Drive, P.O. Box 21447, Waco, Texas 76702-1447
817-666-4545, FAX 817-666-4544

Printed in U.S.A.

TURRET INSTALLATION

- 47AE-60-00 Table of Contents
- 01 47AE Turret Installation
- 02 Turret Rotation Installation
- 03 Turret Rotation Gear Box Assembly
- 04 Turret Rotation Motor Assembly
- 05 Turret Hydraulic Installation
- 06 Turret Electric Installation
- 07 Turret Control Box Assembly

CARRIAGE INSTALLATION

- 47AE-70-00 Table of Contents
- 01 47AE Carriage Installation
- 02 Drive Installation
- 03 Torque Hub Assembly
- 04 Brake Assembly
- 05 Drive Motor Assembly
- 06 Steering Installation
- 07 Steering Cylinder Assembly
- 08 Wheel Installation
- 09 Carriage Hydraulic Installation
- 10 Drive Valve Assembly
- 11 Hydraulic Tank Assembly
- 12 Lift/Steer Manifold Assembly
- 13 Drive Manifold Assembly
- 14 Speed Control Valve Assembly
- 15 47AE Battery Installation
- 16 Battery Charger Assembly
- 17 Power Unit Installation

OPTIONAL INSTALLATION

- 47AE-80-00 Table of Contents
- 01 47AE Optional Installation
- 02 5 FT. Platform Assembly
- 03 Rotating Beacon Assembly
- 04 Head and Tail Light Assembly
- 05 Travel Warning Horn Assembly
- 06 Platform Spot Light Assembly
- 07 Emergency Battery lowering Auxiliary Assembly
- 08 Airline To Platform Assembly
- 09 110V To Platform Line Assembly
- 10 Foam Filled Tire Assembly
- 11 Lifting Eyes Installation
- 12 Self Closing Platform Gate Assembly
- 13 Hour Meter Assembly
- 14 Special Sacos Options

This CONDOR articulating boom model 47AE parts breakdown section is illustrated as:

CALAVAR'S PARTS BREAKDOWN

- 47AE-00-00 Table of Contents
- 01 How to use parts Breakdown
- 02 How to Order Parts
- 03 Warranty Return Authorization Form

FINAL INSTALLATION

- 47AE-10-00 Table of Contents
- 01 47AE Final Installation
- 02 Cover Installation
- 03 Decal Installation

SCHEMATICS

- 47AE-20-00 Table of Contents
- 01 Hydraulic Schematic
- 02 Electric Schematic
- 03 Electric Symbols

PLATFORM INSTALLATION

- 47AE-30-00 Table of Contents
- 01 47AE Platform Installation
- 02 Platform Assembly
- 03 Platform Control Box Assembly
- 04 Platform Control Valve Assembly

BOOM INSTALLATION

- 47AE-40-00 Table of Contents
- 01 47AE Boom Installation
- 02 Boom Assembly
- 03 Master Cylinder Assembly
- 04 Boom Extension Cylinder Installation
- 05 Extension Cylinder Assembly
- 06 Slave Leveling Cylinder Installation
- 07 Slave Cylinder Assembly
- 08 Holding Valve Assembly
- 09 Cable Track Assembly
- 10 Boom Hydraulic Installation
- 11 Boom Lift Cylinder Assembly
- 12 Gravity Lowering Manifold Assembly

LIFT INSTALLATION

- 47AE-50-00 Table of Contents
- 01 47AE Lift Installation
- 02 Lift Gravity Lowering Manifold Assembly
- 03 Arm Lift Cylinder Assembly

PURPOSE

This document is prepared, issued and revised by CALAVAR CORPORATION for the exclusive use of its customers and is intended for use in provisioning, requisitioning, storing and issuing replaceable CONDOR articulating boom model 47AE parts and units and in identifying parts. The contents are proprietary to CALAVAR and are subject to change without notice. The use of any part of this document by any other person or persons or for any other purpose without the written consent of CALAVAR is expressly prohibited. In addition, CALAVAR expressly disclaims any and all responsibility arising in or any way related to such use without CALAVAR'S prior written consent thereto.

The parts number content of this document, arrangement and breakdown sequence of items is compatible with Military Standard (MS) and Air Transport Association Specification (ATA).

GENERAL SYSTEM OF ASSEMBLY ORDER- Detailed Parts List (Refer to Next Page)

1. This area refers to the corresponding illustration

UNIT - GROUP - FIGURE - PAGE

A. UNIT shows which is CALAVAR'S model number (such as: 100I, 125SW, 2532, 37AE, 46N, 47AE, 66Q8, 86, 8742, RT48A, etc.)

B. GROUP should be divided with:

00 INTRODUCTION
 01 FINAL INSTALLATION
 20 SCHEMATICS
 30 PLATFORM INSTALLATION
 40 BOOM INSTALLATION
 50 LIFT INSTALLATION
 60 TURRET INSTALLATION
 70 CARRIAGE INSTALLATION
 80 OPTIONAL INSTALLATION

C. FIGURE belongs to the Group. Please see page of contents and each group.

D. PAGE numbers follow to the right of each figure number.

2. The ITEM NUMBER corresponds to the item number shown for the part in illustration. Parts with item number preceded by a dash (such as: -1,-4,-5,-6,-22, etc.) are not illustrated.
3. PART NUMBERS that carry a CALAVAR part number.

00-00-00

ITEM NUMBER	CALAVAR PART NUMBER	DESCRIPTION					QUANTITY
		1	2	3	4	5	
-1	MDL47AE	Installation, 47AE Final					Ref
2	37364	. Installation, Cover (See 47AG-10-02 for DET)					1
3	34275	. Installation, Decal (See 47AE-10-03 for DET)					1
-4	58276	. Paint, Yellow					1
-5	37061	. Schematic, Battery Hydraulic (See 47AE-20-01 for DET)					1
-6	37175	. Schematic, Electrical (See 47AE-20-02 for DET)					1
7	37109	. Installation, Boom and Platform					1
8	37112	. . Installation, 47AE Platform (See 47AE-30-01 for DET)					1
9	34045-STL	. . Installation, 47AG Steel Boom (See 47AE-40-01 for DET)					1
10	34044	. Installation, 47AE Lift (See 47AE-50-01 for DET)					1
11	34043	. Installation, 47AE Turret (See 47AE-60-01 for DET)					1
12	34031	. Installation, 47AE Carriage (See 47AE-70-01 for DET)					1
13	OPT 47AE	. Installation, 47AE Optional (See 47AE-80-01 for DET)					1
14	92244	. Manual, 47AE Operation and Safety (See Safety Section for REF)					1
15	34919	. Installation, Safety Manual					1
16	34354	. . Assembly, Manual Holder					1
17	67793	. . Clamp					2
18	BOM36000	. . Bolt, Hex (attaching parts)					2
19	BOM31444	. . Washer, Flat (attaching parts)					2
20	BOM36725	. . Washer, SPL Lock (attaching parts)					2
21	BOM31201	. . Nut, Hex (attaching parts)					2
22	67470-001	. Oil, Hydraulic					A/R

3

2

2

3

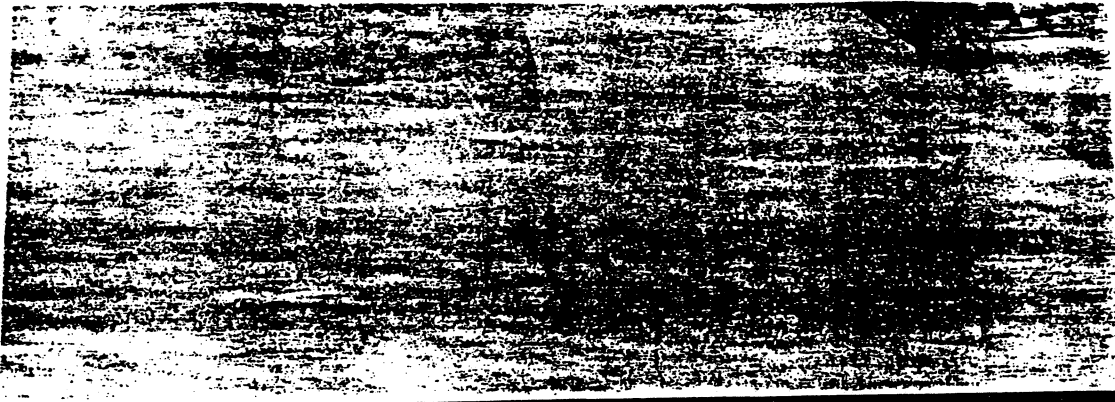
4

1

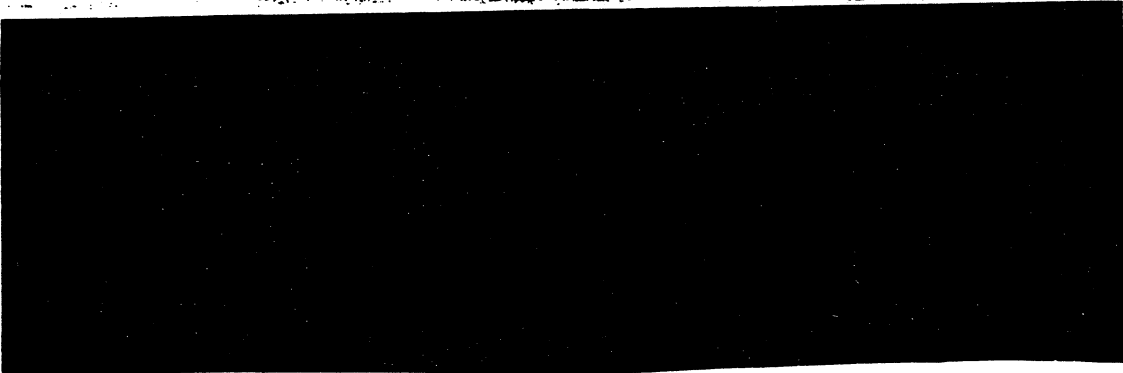
5

5

4



(ORANGE)



(Red)

32

(Z)

MADE IN U.S.A.



2

①

CAUTION

FOR EMERGENCY LOWERING
PUSH RED BUTTON IN AND
TURN COUNTER CLOCKWISE

31



CAUTION
TIE DOWN RING
DO NOT
LIFT WEIGHT OF UNIT
FROM THIS POINT.
FOR TRANSPORT
ONLY

26

(T)

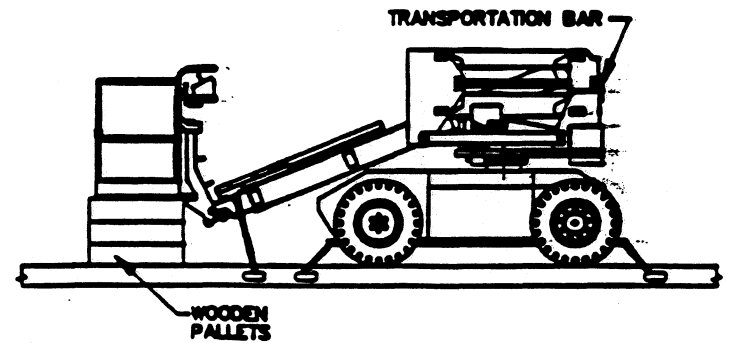
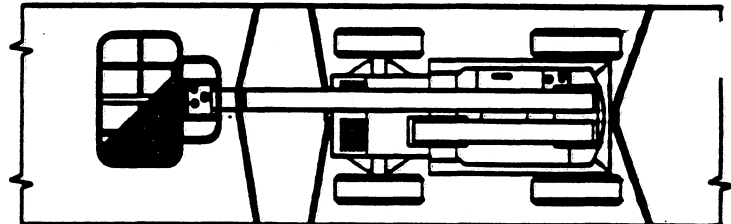
IMPORTANT
CHECK BATTERY
WATER LEVEL
AT LEAST
ONCE A WEEK.

50070

(S)

25

FACTORY RECOMMENDED
TRANSPORTATION DIAGRAM



27

(U)

TIRE PRESSURE 60 PSI

28

(V)

10-03-07

HYDRAULIC FLUID

2185

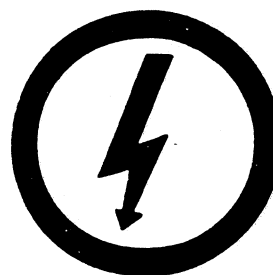
22



DANGER

ELECTROCUTION HAZARD KEEP CLEAR

DEATH OR SERIOUS INJURY CAN RESULT FROM
CONTACT WITH THIS EQUIPMENT OR VEHICLE
IF IT SHOULD BE ELECTRICALLY CHARGED. 21882-001



23



ROTATION TOOL INSIDE

30



DANGER

THIS MACHINE IS NOT INSULATED ELECTROCUTION HAZARD

MAINTAIN SAFE CLEARANCES FROM ELECTRICAL LINES AND
APPARATUS. YOU MUST ALLOW FOR BOOM SWAY, ROCK OR
SAG AND ELECTRICAL LINE AND LOAD SWAYING.

THIS AERIAL WORK PLATFORM DOES NOT PROVIDE
PROTECTION FROM CONTACT WITH OR PROXIMITY TO AN
ELECTRICALLY CHARGED CONDUCTOR.

YOU MUST MAINTAIN A CLEARANCE OF AT LEAST 10 FEET
BETWEEN ANY PART OF THE WORK PLATFORM OR LOAD AND
ANY ELECTRICAL LINE OR APPARATUS CARRYING UP TO
50,000 VOLTS. ONE FOOT ADDITIONAL CLEARANCE IS
REQUIRED FOR EVERY ADDITIONAL 30,000 VOLTS OR LESS.
DEATH OR SERIOUS INJURY WILL RESULT FROM CONTACT OR
INADEQUATE CLEARANCE. 21882-002

21882-002



24