



ILLUSTRATED PARTS BREAKDOWN SECTION

TABLE OF CONTENTS

47A-00-00 Table of Contents

CALAVAR PARTS SECTION

47A-00-01 Table of Contents
 -02 How to Use Detail Parts List
 -03 How to Order Parts

FINAL CONDOR 47A AND 47AG

47A-10-00 Table of Contents
 -01 Final Installation
 -02 Decal Installation
 -03 Cover Installation
 47AG-10-01 Final Installation
 -02 Decal Installation
 -03 Cover Installation

SCHEMATICS

47A-20-00 Table of Contents
 -01 Electrical Schematic
 -02 Hydraulic Schematic
 47AG-20-01 Electrical Schematic
 -02 Hydraulic Schematic

PLATFORM ASSEMBLY

47A-30-00 Table of Contents
 -01 Platform Assembly
 -02 Platform Control Box Assembly
 -03 Platform Control Valve Assembly
 -04 Rotation Gear Box Assembly
 47AG-30-01 Platform Assembly
 -02 Control Box Assembly

BOOM INSTALLATION

47A-40-00 Table of Contents
 -01 Final Boom Installation
 -02 Boom Assembly
 -03 Master Cylinder Assembly
 -04 Extension Cylinder Assembly
 -05 Slave Cylinder Installation
 -06 Cable Track Assembly
 -07 Boom Hydraulic Installation
 -08 Boom Lift Cylinder Assembly

FIGURE 00 TABLE OF CONTENTS

47A - 00 - 00 - 01



LIFT ASSEMBLY

47A-50-00	Table of Contents
-01	Lift Assembly
-02	Lift Hydraulic Installation
-03	Lift Hoses Diagram

TURRET INSTALLATION

47A-60-00	Table of Contents
-01	Turret Installation
-02	Turret Electric Installation
-03	Turret Control Box Assembly
-04	Turret Hydraulic Installation
-05	Turret Rotation Installation
-06	Rotation Gear Box Assembly
-07	Rotation Hydraulic Motor Assembly
47AG-60-01	Turret Installation
-02	Turret Electric Installation
-03	Turret Control Box Assembly

CARRIAGE INSTALLATION

47A-70-00	Table of Contents
-01	Carriage Installation
-02	Drive Installation
-03	Brake Assembly
-04	Drive Motor Assembly
-05	Steering Installation
-06	Steering Cylinder Assembly
-07	Wheel Installation
-08	Carriage Hydraulic Installation
-09	Lift/Steer Manifold Assembly
-10	Boom Extension Manifold Assembly
-11	Drive Valve Assembly
-12	Hydraulic Tank Assembly
-13	Battery Installation
-14	Power Unit Installation
-15	Carriage Plumbing Diagram
47AG-70-01	Carriage Installation
-02	Boom Extension Manifold Assembly
-03	Engine Installation
-04	Engine Electric Panel Assembly
-05	Fuel Tank Installation
-06	Carriage Plumbing Diagram

FIGURE 00 TABLE OF CONTENTS

47A - 00 - 00 - 02

SERIAL NO.

ISSUED



OPTIONAL INSTALLATION

47A-80-00	Table of Contents
-01	110VAC at Platform Installation
-02	Rotating Beacon Installation
-03	Hour Meter Installation
-04	Foam Filled Tire Installation
-05	IPOS Platform Installation
47AG-80-01	Duel Fuel Installation (Vapor Withdrawal)
-02	Duel Fuel Installation (Liquid Withdrawal)

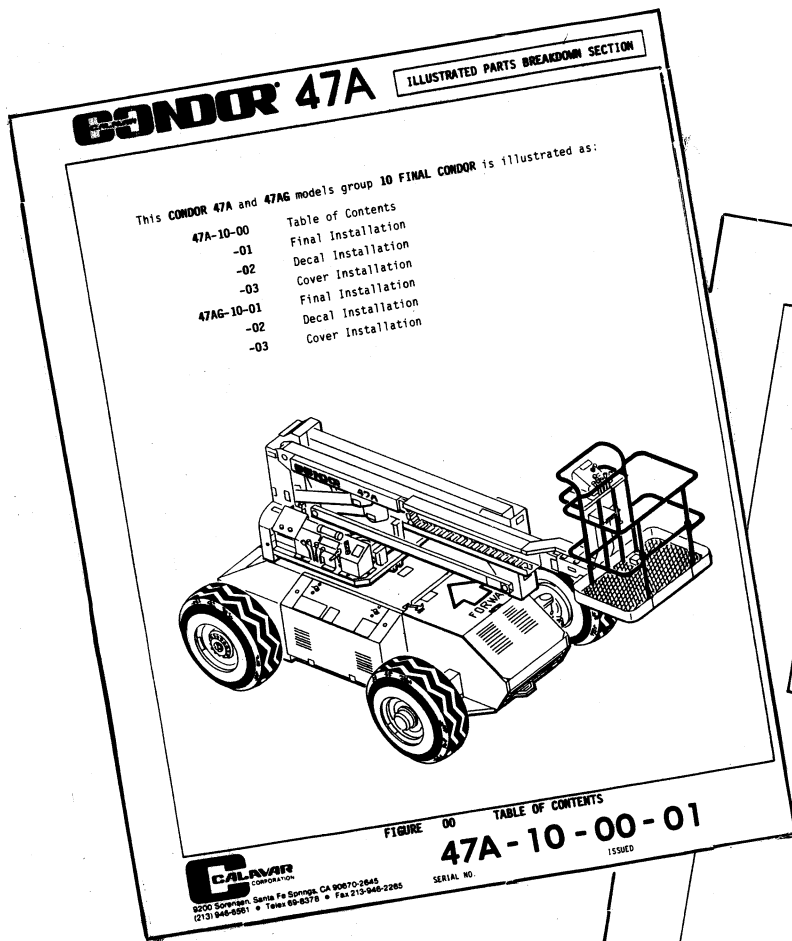


FIGURE 00 TABLE OF CONTENTS

47A - 00 - 00 - 03

SERIAL NO.

ISSUED



8300 Imperial Dr., P.O. Box 21447, Waco, TX 76702-1447
(817) 666-4545 (800) 877-5544 - FAX (817) 666-4544



CONDOR® SERVICE INFORMATION

1. If you need assistance or have any service or maintenance questions, Calavar service and parts personnel are always available by phone or fax. The telephone numbers are:

(817) 666-4545 Telephone
(817) 666-5125 Voice Mail
(800) 443-5803 FAX

2. There are numerous written Maintenance Procedures available for this machine. These procedures are available through the Calavar Service Department to anyone who requests them.
3. Service and maintenance are not a substitute for trained, qualified service technicians. Calavar conducts service schools on a continuing basis. Call any of our service or sales persons for a schedule. Remember, training of mechanics is the responsibility of their employer, but Calavar Service Schools help you provide this training.
4. Calavar Service School Training Manuals are available for purchase through the parts department. The part numbers for these manuals are: #92333 for self-propelled models; and #92334 for truck-mounted models.

CALAVAR CORPORATION

INTRODUCTION

The primary purpose of this manual is to provide the user with a thorough understanding of the proper operating procedures necessary to comply with the intended use of the CONDOR®, and to provide the information necessary to maintain and service the CONDOR®.

THE OPERATOR'S MANUAL MUST BE RETAINED ON THE CONDOR® AT ALL TIMES.

Do not attempt to operate or service the CONDOR® until you have read and understood all information provided in this manual. Familiarize yourself with the functions and operations of the upper and lower controls. A good understanding of the controls, their limitations, and their capabilities will maximize operating efficiency. The various decals attached to this CONDOR® also contain vital operational instructions. Read the decals before operating this CONDOR®.

It is YOUR RESPONSIBILITY to follow procedures while operating the CONDOR®. The manufacturer of this CONDOR® cannot control the wide range of applications that may be used in carrying out a variety of jobs. Therefore, it is THE USER'S RESPONSIBILITY to consider all personnel when making decisions regarding the CONDOR®'s intended use.

It is also YOUR RESPONSIBILITY to understand and obey all federal, state, and local regulations regarding the operation and use of aerial work platforms. A copy of the ANSI/SIA Manual of Responsibilities is attached for your use: ANSI/SIA A92.5-1992 is provided for Boom-Supported Elevating Work Platforms, and ANSI/SIA A92.6-1990 is provided for Self-Propelled Elevating Work Platforms.

Calavar Corporation reserves the right to modify, improve, add, and/or delete certain design features of its products without any obligation to incorporate new features into products previously sold. Our manuals are continually updated to reflect these changes.

***DO NOT ALTER OR MODIFY THIS CONDOR® WITHOUT PRIOR WRITTEN APPROVAL
FROM THE MANAGEMENT OF CALAVAR CORPORATION***

SERVICE & MAINTENANCE

Many of the parts used in the manufacture of the CONDOR® have specific properties, and the manufacturer recommends that replacement parts be purchased through Calavar Corporation in order to ensure the original integrity of the product. Repairs and adjustments should only be made by trained and qualified personnel. Please refer to the maintenance and parts sections of the Calavar Operation, Maintenance, & Parts Manual for information on service and maintenance of the CONDOR®.

NOTE: Please refer to the Calavar Parts section of the Operation, Maintenance, & Parts Manual for information pertaining to your CONDOR®.



CALAVAR CORPORATION

Self – Propelled Booms and Scissors WARRANTY

Calavar Corporation ("Calavar") warrants to the purchaser that each new aerial work platform made by Calavar is free from defects in material and workmanship arising under normal use and service, in the case of major weldments (chassis, turret and booms), for a period of **5** years after the original shipment of the aerial work platform from Calavar's plant; and in the case of all other parts, for a period of **1** year after the aerial work platform is first placed in service or **two** years after the original shipment of the aerial work platform from Calavar's plant, whichever occurs first.

The obligation and liability under this Warranty is expressly limited to repairing or, at Calavar's option, replacing free of charge, at its factory in Waco, Texas or at an authorized repair facility designated by Calavar, the defective part. In no event shall Calavar or its suppliers be liable to the purchaser or any other person for transportation charges or for any incidental, collateral, special or consequential damages, including without limitation damages for loss of profits, loss of customers, loss of goodwill or work stoppage, claims by any party other than the purchaser, or any other similar damages or loss even if Calavar, its suppliers or its representatives have been advised of the possibility of such damages.

Parts claimed to be defective and for which repair or replacement is desired shall be returned transportation **prepaid** to Calavar's factory for inspection. This Warranty applies to replacement parts provided under the terms of this Warranty only for the remainder of the Warranty period applicable to the original purchase.

Any operation of the equipment beyond rated capacity, improper use or application of the equipment, substitution upon it of parts not approved by Calavar or alteration or repair of the equipment by any person not authorized by Calavar shall, at Calavar's option, void this Warranty. Calavar shall have no liability or responsibility for damages resulting from accident or the malfunction of equipment and components not supplied by Calavar.

No agent, employee, distributor, dealer or other representative of Calavar is authorized to modify this Warranty in any way. Accordingly, additional statements or presentations by any such representative, whether oral or written, do not constitute warranties by Calavar and should not be relied upon as limited warranties of Calavar, and no attempt, effort or promise to repair equipment by Calavar or any such representative at any time shall modify or extend this Warranty in any way. If the purchaser has used its own order form, no additional or different warranty terms contained in purchaser's form will be honored by Calavar. This Warranty covers only new and unused aerial work platforms manufactured by Calavar. Products or parts manufactured by others are covered only by such warranties as are extended to the purchaser by Calavar's suppliers.

This Warranty is in lieu of all other warranties, expressed or implied, including but not limited to warranties of merchantability and fitness for a particular purpose. Any applicable implied warranty shall be limited in duration to the warranty period.

8300 Imperial Drive, P.O. Box 21447, Waco, Texas 76702-1447 • 817-666-4545, 817-666-4544 FAX

How to Order Parts

1. When ordering parts for your **CONDOR®**, ensure that you are able to give the model and serial numbers of all units for which parts are needed. The serial number(s) will assist the Calavar Parts Department in providing the correct parts for your machine(s). Please refer to FIGURE A for Serial Number Location on this model.
2. If known, please specify the Calavar part number(s) for the part(s) you require, and always provide a complete description of all parts.
3. Fax orders are preferable, though parts may also be ordered by mail and telephone. A sample parts order (with fax number) follows this page.
4. Parts needed for a warranty repair must be purchased through the Calavar Parts Department. Credit will be authorized through the Service Department after a Warranty Claim has been submitted to Calavar. A Warranty Claim is to be filed for any part received as "defective".
5. Calavar will ship parts as per our customers' request at the time of the order—i.e., UPS, Federal Express, or preferred truck line. When shipping Federal Express, your customer account must be given at the time of the order.
6. Calavar classifies its orders in the following ways:
 - Emergency (unit out of service) - Top priority. Shipping deadline for emergency orders to ship same day is 2:00 p.m. Central Standard Time. Any emergency order received after 2:00 p.m. will be shipped the following day.
 - Stock Order to be shipped within (1) week.
7. Calavar has a \$25.00 Net Minimum Billing charge per order.
8. All price quotations will be valid for 90 days.
9. Parts shown as shipped on the Calavar packing list and subsequent invoice but not received by the dealer/customer **MUST** be reported within 10 days after the date of shipment. If the parts are still required, a NEW parts order must be submitted. Shortages and discrepancies will be reviewed on an individual basis by the Parts staff and adjustments will be made accordingly.
10. Invoice discrepancies regarding incorrect prices or discounts should be reported immediately to the Parts Department. Report the Sales Order number, Purchase Order number, and Invoice number. Your request will be reviewed and adjustments will be made accordingly.

PURPOSE

This document is prepared, issued and revised by the **CALAVAR CORPORATION** for the exclusive use of its customers and is intended for use in provisioning, requisitioning, storing and issuing replaceable **CONDOR** parts and units and in identifying parts. The contents are proprietary to **CALAVAR** and are subject to change without notice. The use of any part of this document by any other person or persons or for any other purpose without the prior written consent of **CALAVAR** is expressly prohibited. In addition, **CALAVAR** expressly disclaims any and all responsibility arising or in any way related to any such use without **CALAVAR's** prior written consent thereto.

The parts number content of this document, arrangement and breakdown sequence of items is compatible with military standard (MS) and Air Transport Association Specification (ATA).

GENERAL SYSTEM OF ASSEMBLY ORDER - Detailed Parts List (Refer to Next Page)

1. This area refers to the corresponding illustration.

UNIT - GROUP - FIGURE - PAGE

A. **Unit** shows which is **CALAVAR's** model number (such as 37A, 47A, 66, 150, 2532, 2548, etc.)

B. **Group** should be divided with

00 INTRODUCTION
10 FINAL INSTALLATION
20 SCHEMATICS
30 PLATFORM INSTALLATION
40 BOOM INSTALLATION
50 LIFT INSTALLATION
60 TURRET INSTALLATION
70 CARRIAGE or CHASSIS INSTALLATION
80 OPTIONAL ASSEMBLY

C. **FIGURE** belongs to Parts Section only. Please see page of contents and each group.

D. **PAGE** numbers follow to the right of figure numbers.

2. The **ITEM NUMBER** corresponds to the item number shown for the part in illustration. Parts with item numbers preceded by a dash (such as -1, -5, -15, -17, etc.) are not illustrated.

3. **PART NUMBERS** that carry a **CALAVAR** part number.

FIGURE 02 HOW TO USE PARTS LIST**47A - 00 - 02 - 01**

CONDOR 47A		ILLUSTRATED PARTS BREAKDOWN SECTION						
		DASH(-) ITEM NOT ILLUSTRATED						
ITEM NUMBER	CALAVAR PART NUMBER	1	2	3	4	5	DESCRIPTION	QUANTITY
- 1	34045						Final Boom Installation (See 47A-10-01 and 47AG 10-01 for NHA)	Ref
2	34052						. Assembly, Boom (See 47A-40-02 for DET)	1
3	34198						. Weldment, Pin	1
4	BOW36052						. Bolt, Hex (attaching parts)	2
5	BOW31327						. Washer, SPL Lock (attaching parts)	2
6	34142						. Weldment, Pin	1
7	BOW36052						. Bolt, Hex (attaching parts)	1
8	BOW31327						. Washer, SPL Lock (attaching parts)	1
9	34189						. Assembly, Cable Track (See 47A - 30-06 for DET)	1
10	34231						. Installation, Boom Hydraulic (See 47A -30-07 for DET)	1
11	34198						. Weldment, Pin	1
12	BOW36052						. Bolt, Hex (attaching parts)	2
13	BOW31327						. Washer, SPL Lock (attaching parts)	2
14	34133						. Weldment, Pin	1
15	BOW36052						. Bolt, Hex (attaching parts)	2
16	BOW31327						. Washer, SPL Lock (attaching parts)	2
-17	67295-003						. Cable, 16 Conductor	A/R



FIGURE 01 FINAL BOOM INSTALLATION

47A-40-01-02

SERIAL NO. ISSUED

FIGURE 02 HOW TO USE PARTS LIST

47A-00-02-02

SERIAL NO. ISSUED



4. DESCRIPTION

- A. The **INDENTURE SYSTEM** used in the detail parts list shows the relationship of one part to another. For a given item, the number of indentures depicts the relationship of the item to the associated installation, next higher assembly (NHA), or components of the item as follows:

1 2 3 4 5

ASSEMBLY (OR INSTALLATION)

- Detail parts for assembly
 - Sub-assembly
 - Attaching parts for sub-assembly
 - ● Detail parts for sub-assembly
 - ● Sub-sub-assembly
 - ● Attaching parts for sub-sub-assembly
 - ● ● Detail parts for sub-sub-assembly
 - ● ● Sub-sub-assembly
 - ● ● Attaching parts for sub-sub-sub-assembly
 - ● ● ● Sub-sub-sub-sub-assembly
- B. See 47A-10-01 for **NHA**
Identifies the illustrated parts section location indicates where the next higher assembly (NHA) of the item is shown.
- C. See 47A-40-01 for **DET**
Identifies the illustrated parts section location, indicates where the item and its detailed (DET) breakdown is shown.
- D. See 47A-40-05 for **REF** or see Vendor Section for **REF**.
Identifies the illustrated parts section location where the part is, also listed and illustrated in Vendor Section. It is used as a cross-reference (REF).

5. QUANTITY

- A. Reference (**Ref**) indicates the item is listed previously in the next higher assembly (NHA) and then again in this figure.
- B. As required (**A/R**) indicates the part is used in a quantity as required.
- C. A number entry indicates the quantity of the part used in its next higher application.
6. Functionally related assemblies are illustrated in phantom but not listed of the detail parts list page.

FIGURE 02 HOW TO USE PARTS LIST



47A - 00 - 02 - 03

HOW TO ORDER PARTS

1. Always give serial number and model of **CONDOR**.
(Refer to each unit nameplate seen below.)



CONDOR MODEL - _____ SERIAL NO - _____

ASSEMBLY NO - _____

PART NO - _____ DATE OF MFG - _____

MAXIMUM PLATFORM HEIGHT - _____

MAXIMUM HORIZONTAL REACH - _____

RATED WORK LOAD - _____ LBS.

HYDRAULIC OPERATING PRESSURE - _____ PSI

U.S. PATENT 4,506,480

THIS UNIT IS NOT ELECTRICALLY INSULATED

THIS MOBILE UNIT CONFORMS TO ALL APPLICABLE
REQUIREMENTS OF ANSI A92.5-1980

15843F

2. Always specify part number and complete name of parts ordered.
(Refer to following page if the part number is unknown.)
3. Do not designate quantity by "sets". State specifically how many parts are wanted.
4. Always give complete address and full shipping instructions.
Specify parcel post, express, motor freight, freight, air express, air freight, etc. United parcel service is available in designated areas.
5. Parts returned without authorization will not be accepted. If it is necessary to return parts for any reason, written authorization may be obtained from **CALAVAR CORPORATION**, Attn: Parts Department, Santa Fe Springs, CA 90670-2645. Proper shipping tags and instructions will be furnished upon requested.

FIGURE 03 HOW TO ORDER PARTS



47A - 00 - 03 - 01

THE PART NUMBER IS UNKNOWN (Refer to page 47A-00-03-03 and 47A-00-03-04)

1. Turn to Table of Content in the desired section.
2. Refer to main group in which part should be listed.
3. Find title of figure in which the part should be shown. Note group, figure and total page numbers.
4. Turn to the detail parts book, find the group and figure.
5. Check your required part and attaching parts and match with the illustration page.
6. Refer to corresponding item number in the parts list.
7. Part numbers are located in the part number column.
8. When ordering variable or optional miscellaneous parts which are not found in this parts section, follow the above outlined procedure of how to order parts.
 - A. When applicable, give model and serial number of the component for which parts are desired.
 - B. In a specific, difficult to describe situation, a marked up photograph or detailed sketch would be helpful.

TO ORDER

1. BY MAIL

Attention: Parts Department
CALVAR CORPORATION

2. BY FAX

(213) 946-2265

3. BY TELEX

69-8378

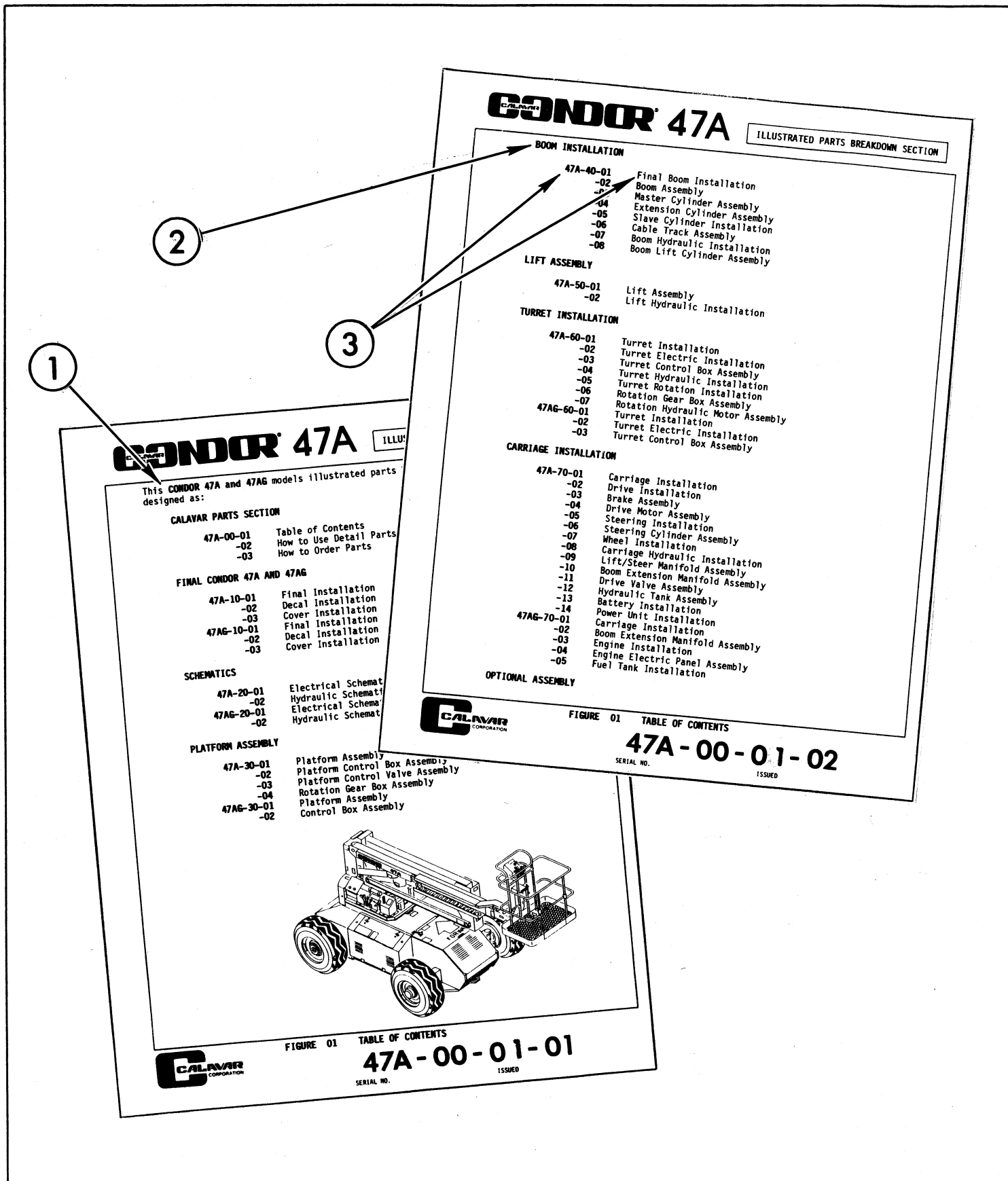
4. BY PHONE

(213) 946-6561

FIGURE 03 HOW TO ORDER PARTS

47A - 00 - 03 - 02





CONDOR 47A ILLUSTRATED PARTS BREAKDOWN SECTION

This CONDOR 47A and 47AG models illustrated parts designed as:

CALAVAR PARTS SECTION

47A-00-01	Table of Contents
-02	How to Use Detail Parts
-03	How to Order Parts

FINAL CONDOR 47A AND 47AG

47A-10-01	Final Installation
-02	Decal Installation
-03	Cover Installation
47AG-10-01	Final Installation
-02	Decal Installation
-03	Cover Installation

SCHEMATICS

47A-20-01	Electrical Schemat
-02	Hydraulic Schemat
47AG-20-01	Electrical Schemat
-02	Hydraulic Schemat

PLATFORM ASSEMBLY

47A-30-01	Platform Assembly
-02	Platform Control Box Assembly
-03	Platform Control Valve Assembly
-04	Rotation Gear Box Assembly
47AG-30-01	Platform Assembly
-02	Control Box Assembly

FIGURE 01 TABLE OF CONTENTS
47A-00-01-01
 SERIAL NO. ISSUED

CONDOR 47A ILLUSTRATED PARTS BREAKDOWN SECTION

BOOM INSTALLATION

47A-40-01	Final Boom Installation
-02	Boom Assembly
-04	Master Cylinder Assembly
-05	Extension Cylinder Assembly
-06	Slave Cylinder Assembly
-07	Cable Track Assembly
-08	Boom Hydraulic Installation
	Boom Lift Cylinder Assembly

LIFT ASSEMBLY

47A-50-01	Lift Assembly
-02	Lift Hydraulic Installation

TURRET INSTALLATION

47A-60-01	Turret Installation
-02	Turret Electric Installation
-03	Turret Control Box Assembly
-04	Turret Hydraulic Installation
-05	Turret Rotation Installation
-06	Rotation Gear Box Assembly
47AG-60-01	Rotation Hydraulic Motor Assembly
-02	Turret Installation
-03	Turret Electric Installation
	Turret Control Box Assembly

CARRIAGE INSTALLATION

47A-70-01	Carriage Installation
-02	Drive Installation
-03	Brake Assembly
-04	Drive Motor Assembly
-05	Steering Installation
-06	Steering Cylinder Assembly
-07	Wheel Installation
-08	Carriage Hydraulic Installation
-09	Lift/Steer Manifold Assembly
-10	Boom Extension Manifold Assembly
-11	Drive Valve Assembly
-12	Hydraulic Tank Assembly
-13	Battery Installation
-14	Power Unit Installation
47AG-70-01	Carriage Installation
-02	Boom Extension Manifold Assembly
-03	Engine Installation
-04	Engine Electric Panel Assembly
-05	Fuel Tank Installation

OPTIONAL ASSEMBLY

FIGURE 01 TABLE OF CONTENTS
47A-00-01-02
 SERIAL NO. ISSUED

CALAVAR CONDOR 47A

ILLUSTRATED PARTS BREAKDOWN SECTION

6
7

CONDOR 47A

ILLUSTRATED PARTS BREAKDOWN SECTION

ITEM NUMBER	CALAVAR PART NUMBER	1 2 3 4 5	DESCRIPTION	QUANTITY
- 1	34045		Final Boom Installation (See 47A-10-01 and 47AG-10-01 for NHA)	Ref
2	34052		. Assembly, Boom (See 47A-40-02 for DET)	1
3	34198		. Weldment, Pin	1
4	BOW36052		. Bolt, Hex (attaching parts)	2
5	BOW31327		. Washer, SPL Lock (attaching parts)	2
6	34142		. Weldment, Pin	1
7	BOW36052		. Bolt, Hex (attaching parts)	1
8	BOW31327		. Washer, SPL Lock (attaching parts)	1
9	34189		. Assembly, Cable Track (See 47A - 30-06 for DET)	1
10	34231		. Installation, Boom Hydraulic (See 47A -30-07 for DET)	1
11	34198		. Weldment, Pin	1
12	BOW36052		. Bolt, Hex (attaching parts)	2
13	BOW31327		. Washer, SPL Lock (attaching parts)	2
14	34133		. Weldment, Pin	1
15	BOW36052		. Bolt, Hex (attaching parts)	2
16	BOW31327		. Washer, SPL Lock (attaching parts)	2
-17	67295-003		. Cable, 16 Conductor	A/R

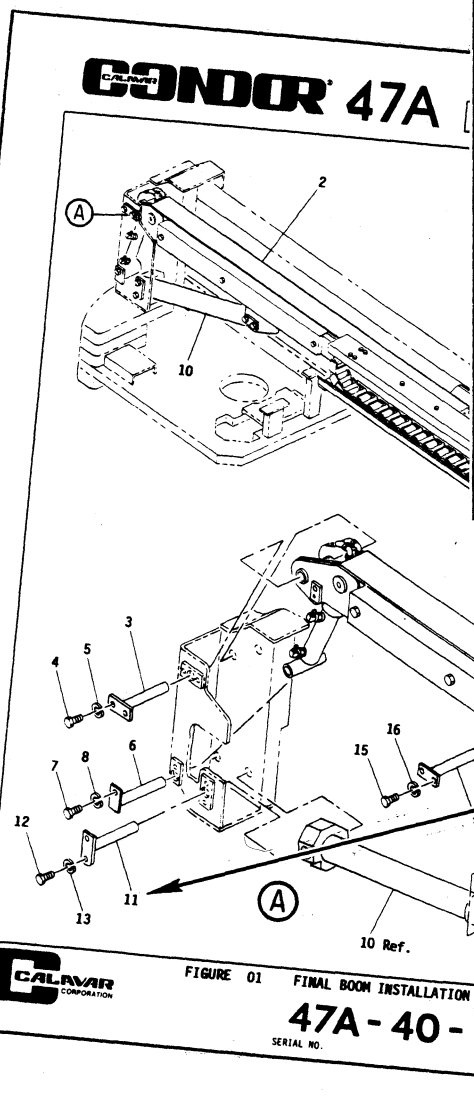


FIGURE 01 FINAL BOOM INSTALLATION
47A-40-01-02
 SERIAL NO. ISSUED

FIGURE 01 FINAL BOOM INSTALLATION
47A-40-01-01
 SERIAL NO. ISSUED

FIGURE 03 HOW TO ORDER PARTS

47A-00-03-04

SERIAL NO. ISSUED



8300 Imperial Dr., P.O. Box 21447, Waco, TX 76702-1447
 (817) 666-4545 (800) 877-5544 - FAX (817) 666-4544

This CONDOR 47A and 47AG models group 10 FINAL CONDOR is illustrated as:

47A-10-00	Table of Contents
-01	Final Installation
-02	Decal Installation
-03	Cover Installation
47AG-10-01	Final Installation
-02	Decal Installation
-03	Cover Installation

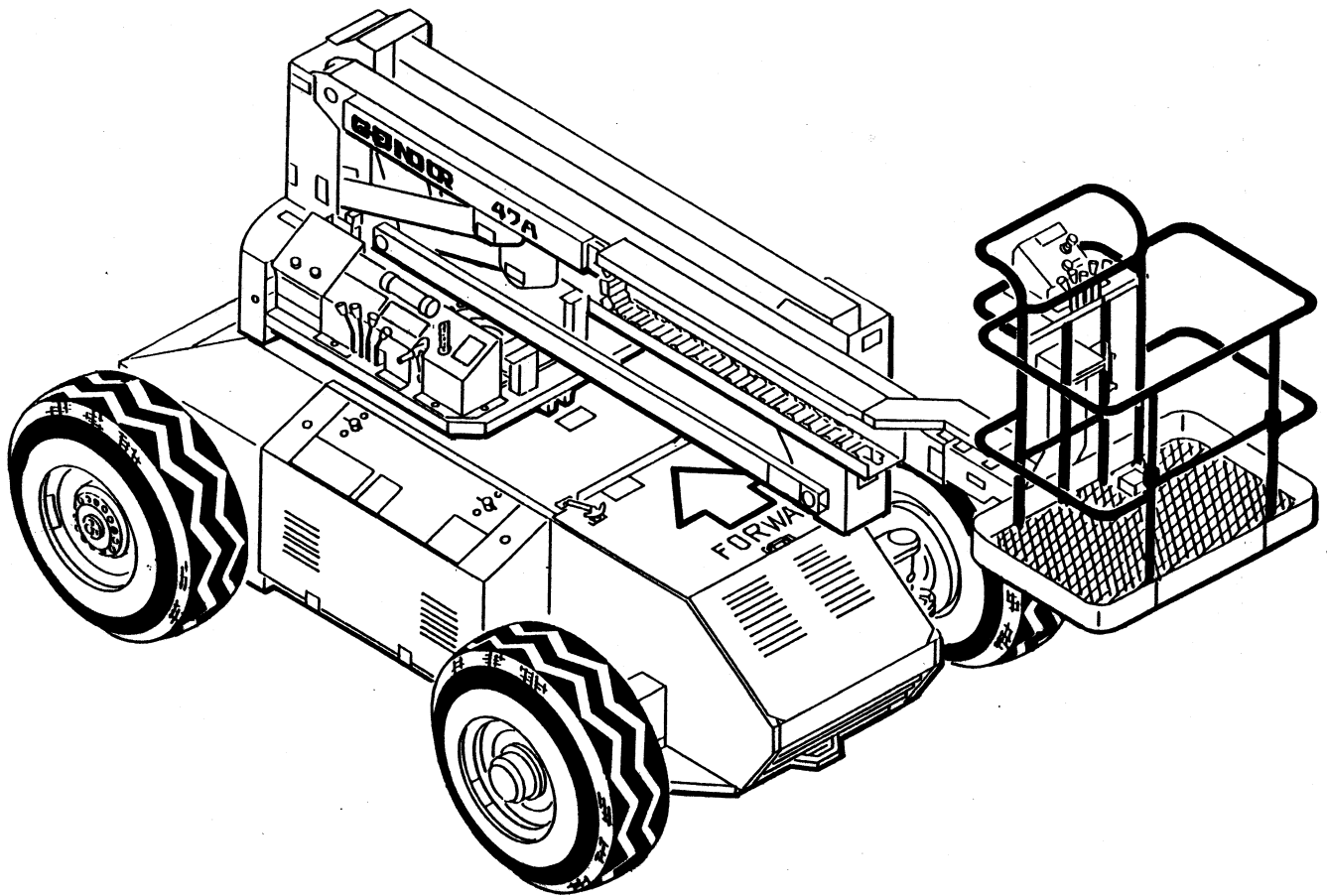


FIGURE 00 TABLE OF CONTENTS

47A-10-00-01



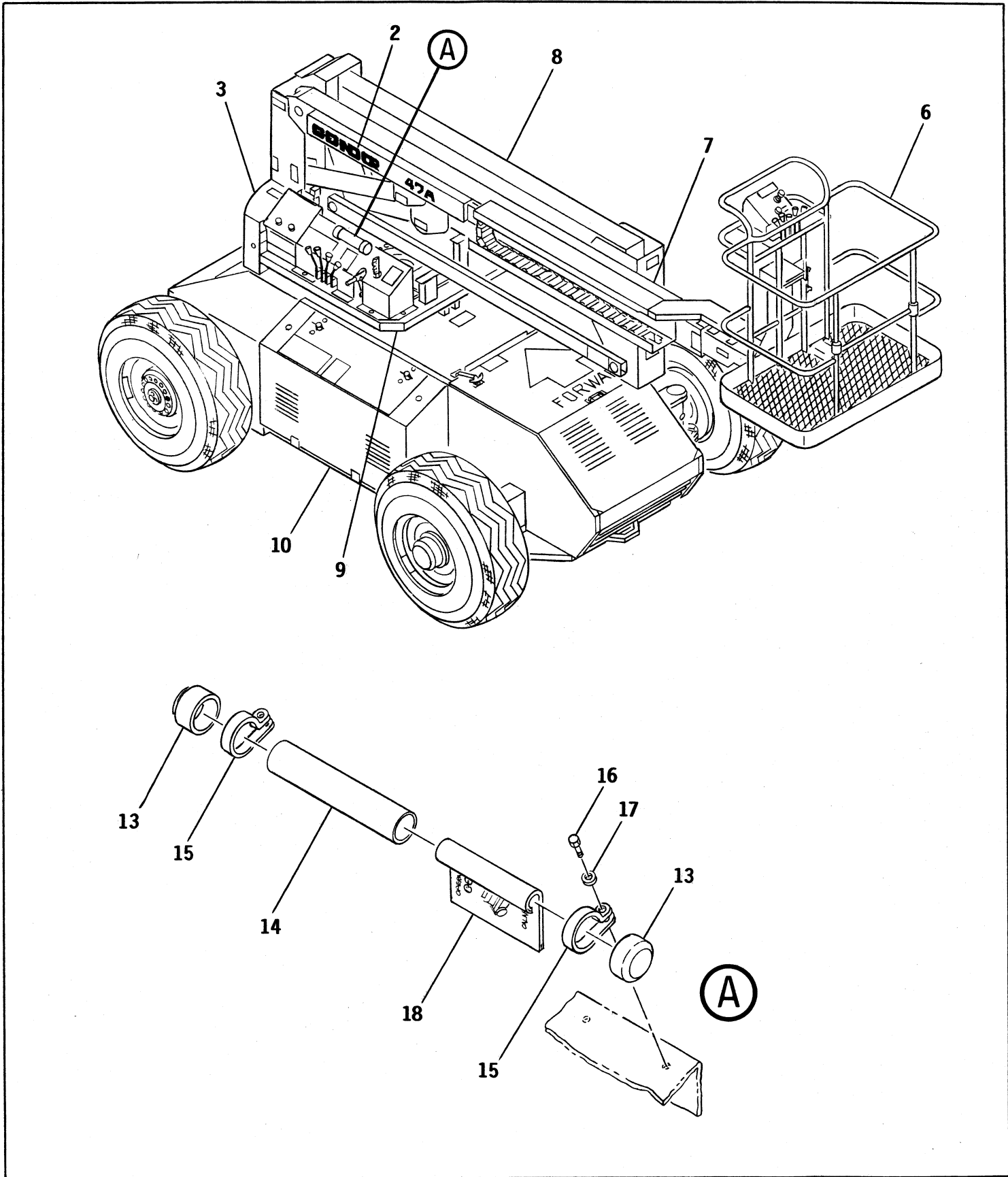


FIGURE 01 FINAL INSTALLATION

47A-10-01-01



ITEM NUMBER	CALAVAR PART NUMBER	DESCRIPTION					QUANTITY
		1	2	3	4	5	
- 1	MDL 47A	Installation, Final					Ref
2	34275	. Installation, Decal (See 47A-10-02 for DET)					1
3	34632	. Installation, Cover (See 47A -10-03 for DET)					1
- 4	34549	. Schematic, Electrical (See 47A -20-01 for DET)					1
- 5	34631	. Schematic, Hydraulic (See 47A-20-02 for DET)					1
6	34046	. Assembly, Platform (See 47A-30-01 for DET)					1
7	34045	. Installation, Boom (See 47A-40-01 for DET)					1
8	34044	. Assembly, Lift (See 47A-50-01 for DET)					1
9	34043	. Installation, Turret (See 47A-60-01 for DET)					1
10	34031	. Installation, Carriage (See 47A-70-01 for DET)					1
- 11		. Assembly, Optional (See 47A-80-00 for DET)					1
- 12	34354	. Assembly, Safety Manual-BLK Holder					1
13		. . Cap					2
14		. . Container					1
15	67793	. Clamp					2
16		. Bolt, Hex (attaching parts)					2
17		. Washer, Flat (attaching parts)					2
18	92244	. Manual, Safety					1

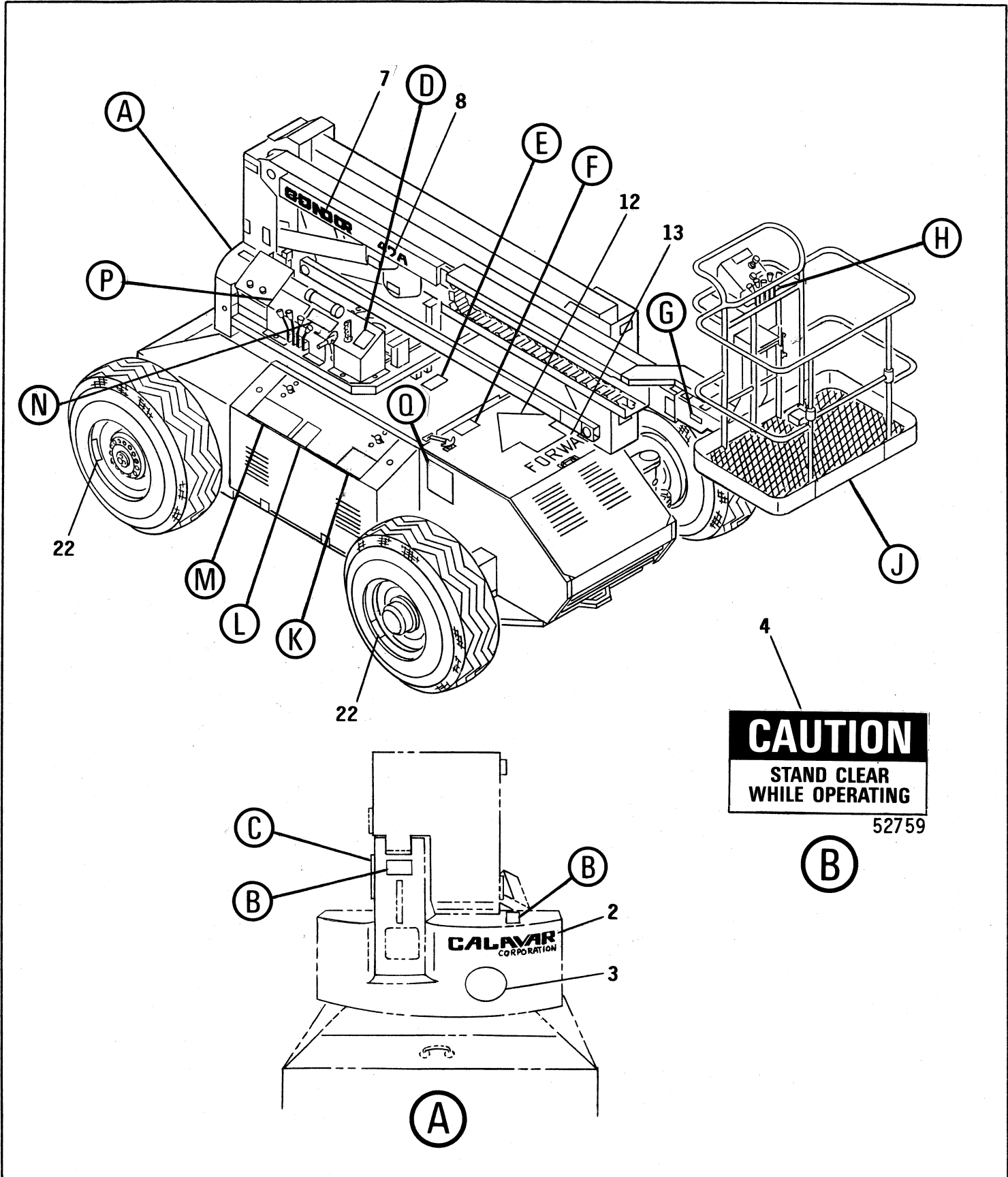
FIGURE 01 FINAL INSTALLATION



47A-10-01-02

CALAVAR CONDOR 47A

ILLUSTRATED PARTS BREAKDOWN SECTION



CAUTION
STAND CLEAR
WHILE OPERATING

52759

FIGURE 02 DECAL INSTALLATION



47A-10-02-01