



PARTS MANUAL

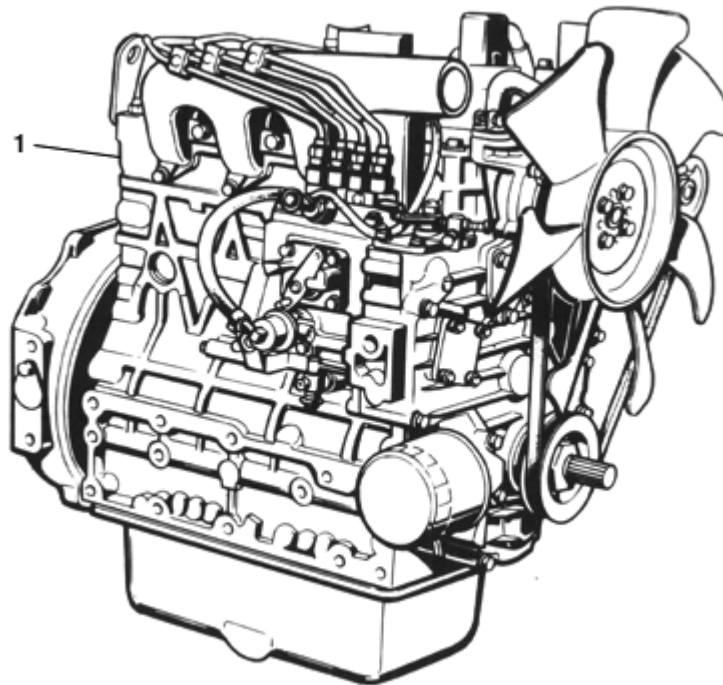
MAINTENANCE

FILTERS KIT



| FIGURE | REFERENCE | DENOMINATION | AMOUNT |
|--------|--------------|---------------------------|--------|
| 001 | KF.20600RE00 | C 250 H x2/x4 FILTERS KIT | 1 |

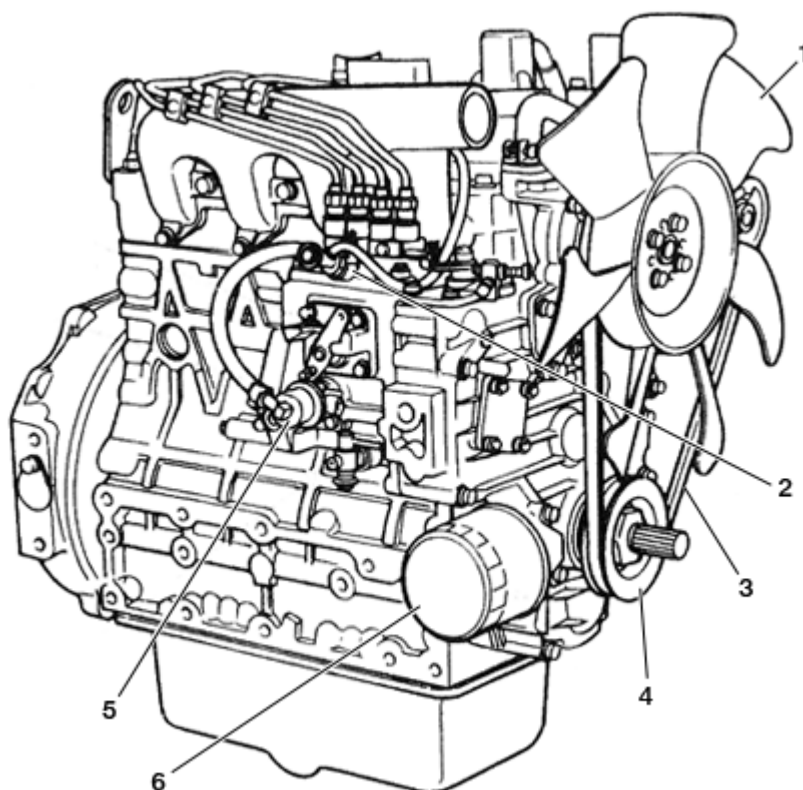
ENGINE (KUBOTA V2003-TE) ENGINE



| FIGURE | REFERENCE | DENOMINATION | AMOUNT |
|--------|-------------|--|--------|
| 001 | 20.02003.00 | COMPLETE DIESEL ENGINE KUBOTA V2003-TE | 1 |

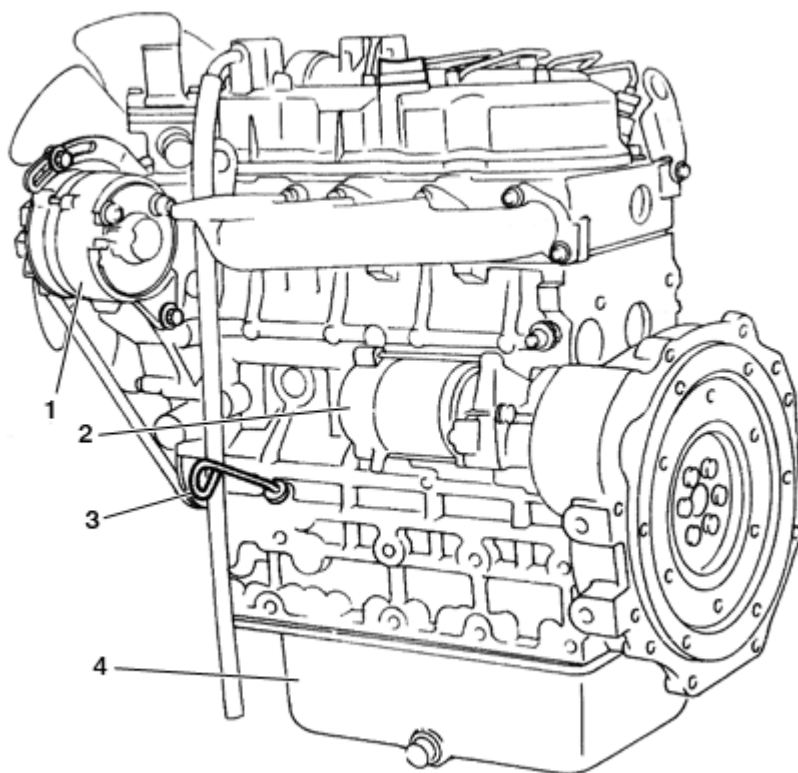
ENGINE (KUBOTA V2003-TE)

ENGINE (PART 1)



| FIGURE | REFERENCE | DENOMINATION | AMOUNT |
|--------|--------------|----------------------|--------|
| 001 | KU.10007.00 | FAN | 1 |
| 002 | KU.10013.00 | INJECTION PUMP | 1 |
| 003 | KU.10010.00 | V BELT | 1 |
| 004 | KU1542474280 | FAN DRIVE PULLEY | 1 |
| 005 | KU.10033.00 | ELECTRICAL FUEL PUMP | 1 |
| 006 | KU.10004.00 | OIL FILTER | 1 |

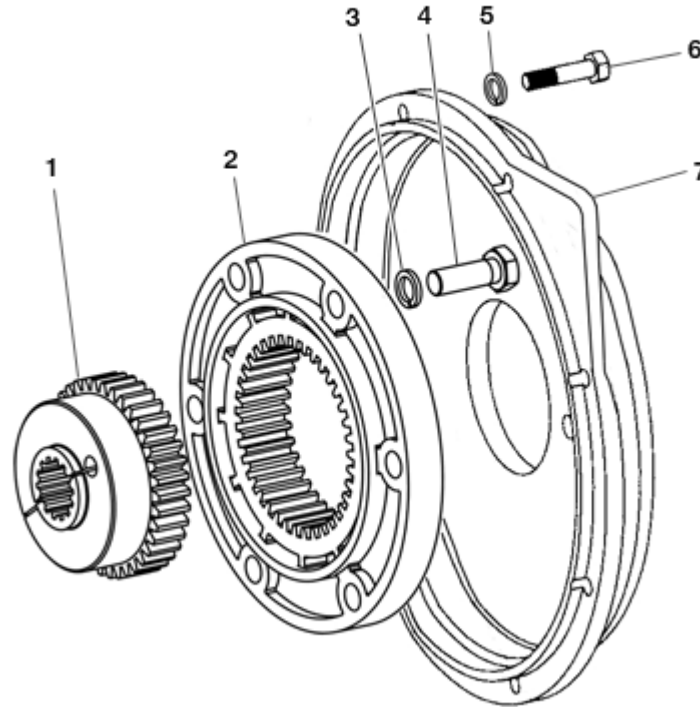
ENGINE (KUBOTA V2003-TE)
ENGINE (PART 2)



| FIGURE | REFERENCE | DENOMINATION | AMOUNT |
|--------|--------------|-----------------|--------|
| 001 | KU.10001.00 | ALTERNATOR | 1 |
| 002 | KU.10002.00 | STARTING ENGINE | 1 |
| 003 | KU1711136410 | OIL GAUGE | 1 |
| 004 | 86.00100.16 | OIL PAN | 1 |

ENGINE (KUBOTA V2003-TE)

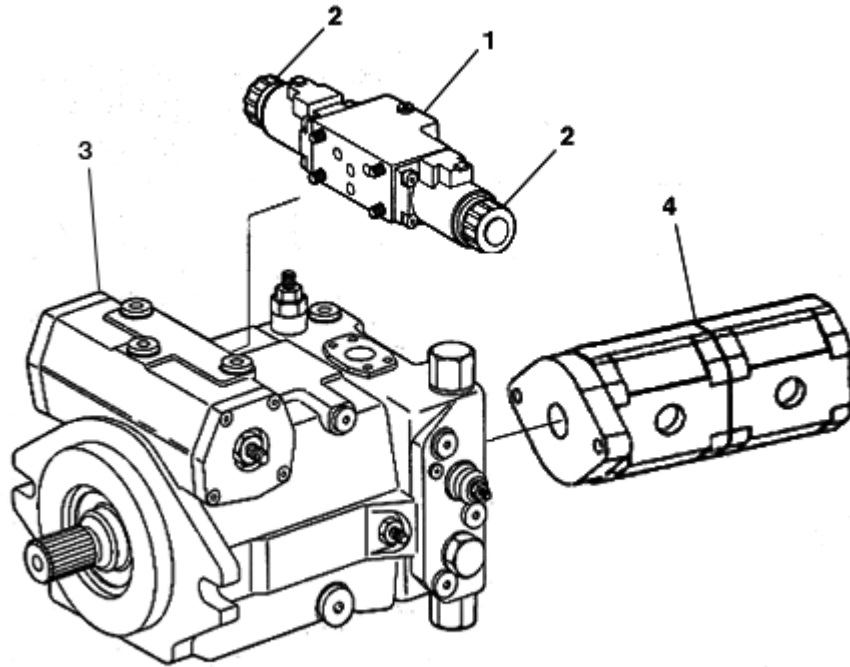
PUMP COUPLING (PART 1)



| FIGURE | REFERENCE | DENOMINATION | AMOUNT |
|--------|--------------|-----------------------------|--------|
| 001 | 20.02170.00 | COUPLING Z38XZ14X45 | 1 |
| 002 | 20.02172.00 | COUPLING 190XZ38X32 | 1 |
| 003 | 104.12000.00 | WASHER DIN7980 D12 | 6 |
| 004 | 604.12035.86 | SCREW DIN931 M12x35 | 6 |
| 005 | 104.10000.00 | WASHER DIN7980 D10 | 8 |
| 006 | 633.10025.86 | SCREW | 8 |
| 007 | 20.02171.00 | COUPLING CYL/CYL 127X290X55 | 1 |

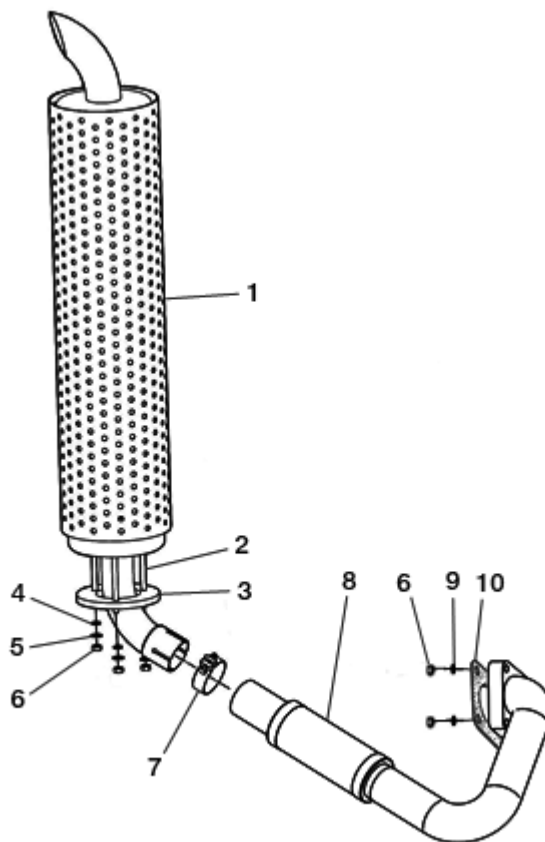
ENGINE (KUBOTA V2003-TE)

PUMP COUPLING (PART 2)



| FIGURE | REFERENCE | DENOMINATION | AMOUNT |
|--------|-------------|-----------------------------|--------|
| 001 | RX.30006.00 | ELECTROVALVE | 1 |
| 002 | RX.30005.00 | SPOOL | 2 |
| 003 | 20.03250.01 | HYDR. PUMP 40 CC HYDROMATIC | 1 |
| 004 | 43.61522.00 | HYDR. PUMP | 1 |

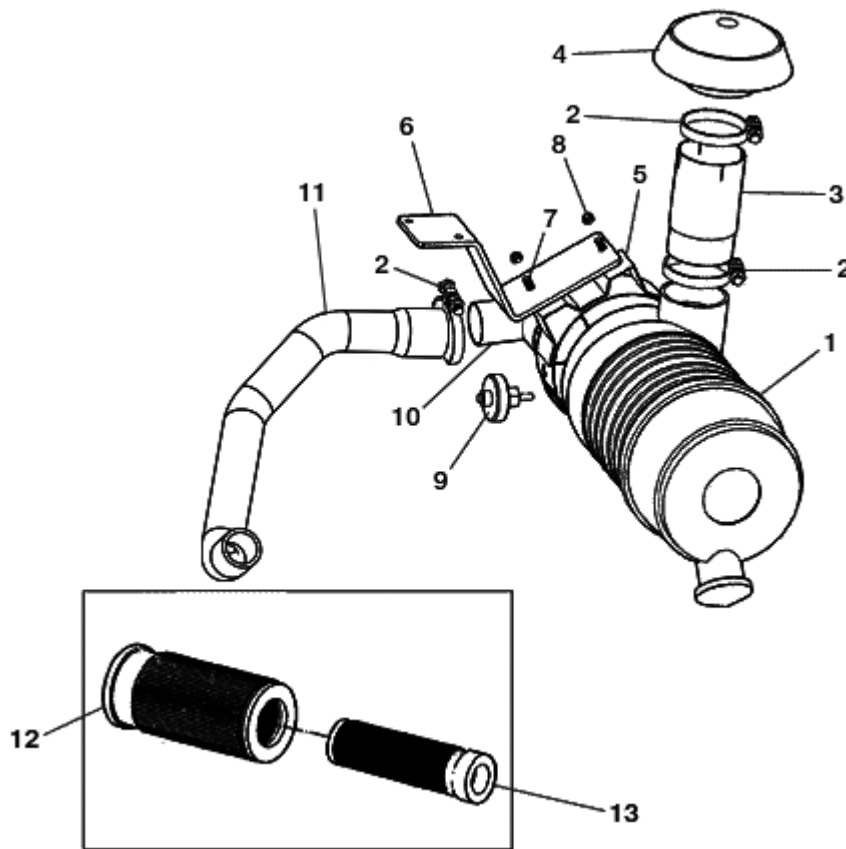
ENGINE (KUBOTA V2003-TE) EXHAUST



| FIGURE | REFERENCE | DENOMINATION | AMOUNT |
|--------|--------------|--------------------------|--------|
| 001 | 20.02026.01 | MUFFLER 1090 | 1 |
| 002 | 20.02037.00 | | 3 |
| 003 | 20.02020.00 | FLANGE | 1 |
| 004 | 104.08000.00 | WASHER DIN7980 D8 | 3 |
| 005 | 101.08000.66 | WASHER DIN125 D8 | 3 |
| 006 | 701.08000.66 | NUT DIN934 M8x1,25 | 6 |
| 007 | 936.53000.66 | CLAMP DIN 71555 D53 | 1 |
| 008 | 20.02022.01 | EXHAUST MANIFOLD D50X400 | 1 |
| 009 | 112.08000.66 | WASHER DIN9021 D8 | 3 |
| 010 | KU1648317110 | GASKET | 1 |

ENGINE (KUBOTA V2003-TE)

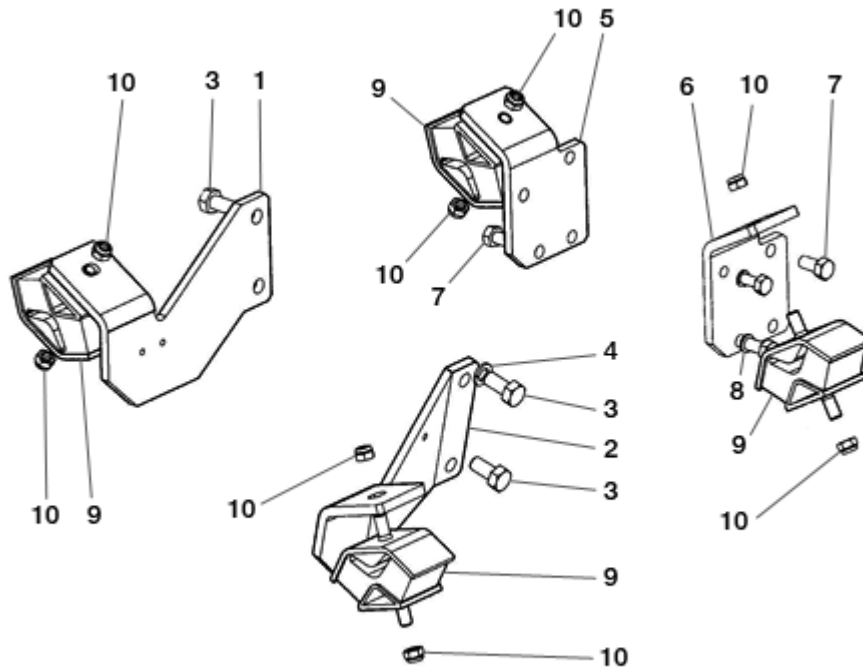
AIR FILTER



| FIGURE | REFERENCE | DENOMINATION | AMOUNT |
|--------|--------------|----------------------------|--------|
| 001 | 43.01210.00 | AIR FILTER | 1 |
| 002 | 912.60080.66 | CLAMP | 3 |
| 003 | 20.02025.00 | TUBE | 1 |
| 004 | 43.01212.00 | GUARD MUFFLER | 1 |
| 005 | 43.01211.00 | CLAMP | 1 |
| 006 | 20.02045.00 | AIR FILTER SUPPORT | 1 |
| 007 | 603.08025.86 | SCREW DIN933 M8x25 | 2 |
| 008 | 711.08000.66 | NUT DIN982 M8 | 2 |
| 009 | 43.50119.00 | INDICATOR | 1 |
| 010 | 20.02024.00 | TUBE | 1 |
| 011 | 20.02049.00 | ADMISSION TUBE D40-50X490 | 1 |
| 012 | 43.01213.00 | FILTER ELEMENT 8X140X320 A | 1 |
| 013 | 43.01214.00 | FILTER ELEMENT 60X80X318 A | 1 |

ENGINE (KUBOTA V2003-TE)

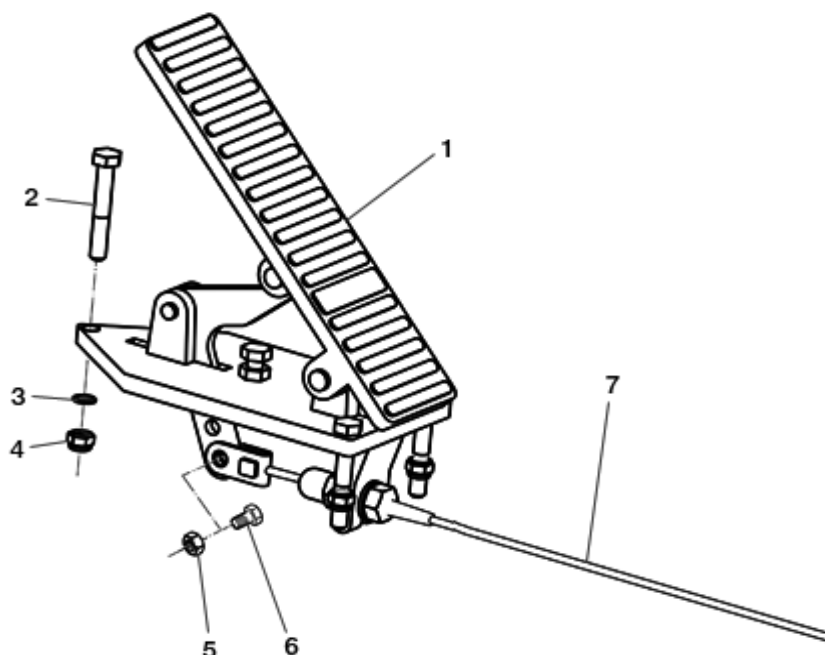
ENGINE SUPPORTS



| FIGURE | REFERENCE | DENOMINATION | AMOUNT |
|--------|--------------|-------------------------------|--------|
| 001 | 20.02013.00 | ENGINE SUPPORT | 1 |
| 002 | 20.02014.00 | ENGINE SUPPORT | 1 |
| 003 | 617.14025.86 | SCREW DIN931 M14X25 | 4 |
| 004 | 104.14000.00 | WASHER DIN7980 D14 | 4 |
| 005 | 20.02015.00 | ENGINE SUPPORT | 1 |
| 006 | 20.02016.00 | ENGINE SUPPORT | 1 |
| 007 | 617.12025.86 | SCREW DIN933 M12X25x1,25 | 8 |
| 008 | 104.12000.00 | WASHER DIN7980 D12 | 8 |
| 009 | 15.97770.01 | SHOCK ABSORBER 60X120X64 50 A | 4 |
| 010 | 720.12000.66 | NUT DIN985 | 8 |

ENGINE (KUBOTA V2003-TE)

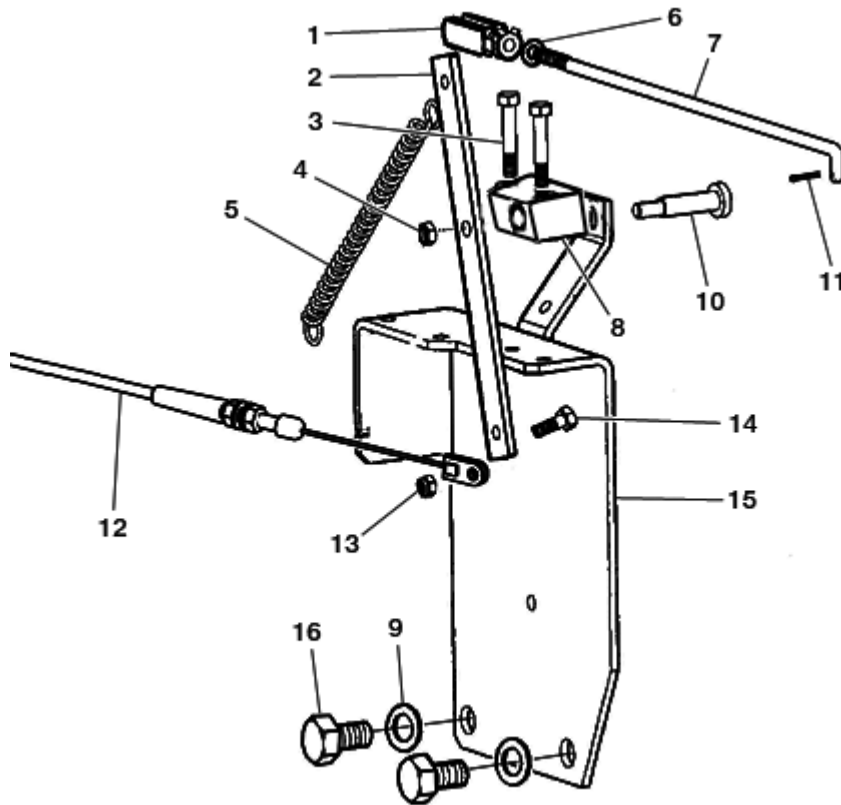
ACCELERATOR PEDAL (PART 1)



| FIGURE | REFERENCE | DENOMINATION | AMOUNT |
|--------|--------------|---------------------------|--------|
| 001 | 12.02020.00 | ACCELERATOR PEDAL VIMOTER | 1 |
| 002 | 603.06020.86 | SCREW DIN933 M6x20 | 3 |
| 003 | 104.06000.00 | WASHER DIN7980 D6 | 3 |
| 004 | 701.06000.66 | NUT DIN934 M6x1 | 3 |
| 005 | 711.06000.66 | NUT DIN982 M6 | 1 |
| 006 | 603.06015.86 | SCREW DIN933 M6x15 | 1 |
| 007 | 57.02042.01 | ACCELERATOR CABLE D2X1545 | 1 |

ENGINE (KUBOTA V2003-TE)

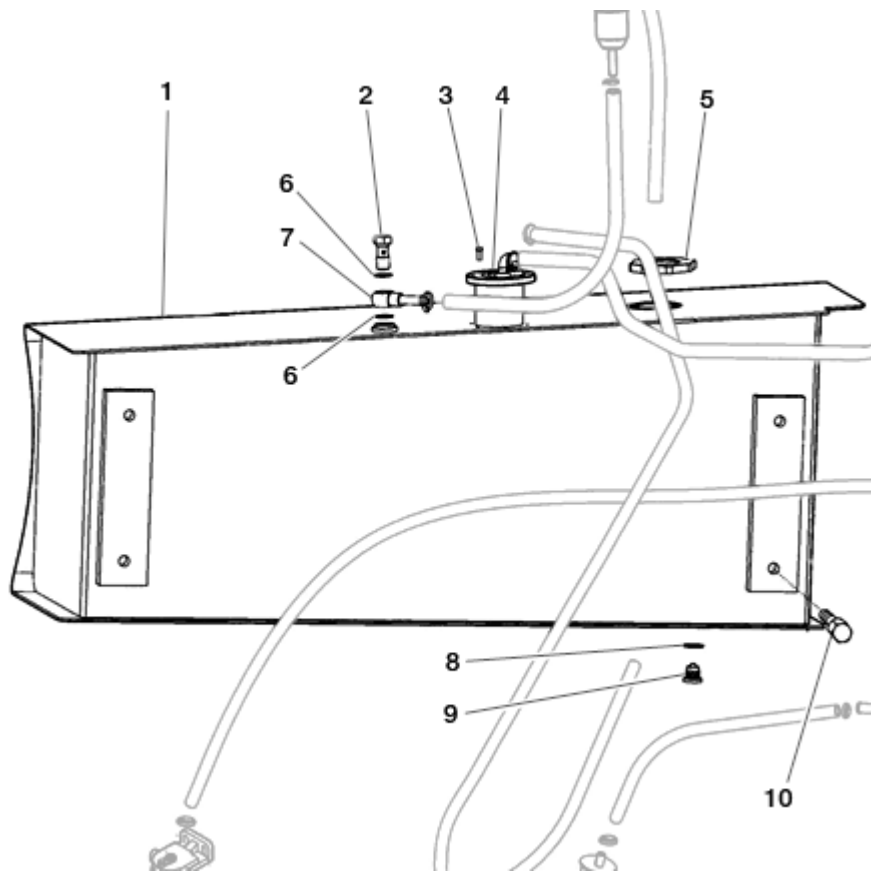
ACCELERATOR PEDAL (PART 2)



| FIGURE | REFERENCE | DENOMINATION | AMOUNT |
|--------|--------------|---------------------------|--------|
| 001 | 10.16348.00 | ACC. FORK | 1 |
| 002 | 57.02043.00 | LEVER FORWARDS | 1 |
| 003 | 604.06035.86 | SCREW DIN931 | 2 |
| 004 | 701.07000.66 | NUT DIN934 | 1 |
| 005 | 45.00139.00 | SPRING TENSION (HATZ) | 1 |
| 006 | 104.07000.00 | WASHER DIN7980 D7 | 1 |
| 007 | 37.00127.20 | ROD FORL6 285 @-@ | 1 |
| 008 | 01.00126.02 | AXLE SUPPORT | 1 |
| 009 | 104.12000.00 | WASHER DIN7980 D12 | 2 |
| 010 | 00.01366.01 | AXLE CIL/ROS | 1 |
| 011 | 401.02025.60 | PIN | 1 |
| 012 | 57.02042.01 | ACCELERATOR CABLE D2X1545 | 1 |
| 013 | 711.06000.66 | NUT DIN982 M6 | 1 |
| 014 | 603.06020.86 | SCREW DIN933 M6x20 | 1 |
| 015 | 57.02044.00 | SUPPORT | 1 |
| 016 | 603.08025.86 | SCREW DIN933 M8x25 | 2 |

ENGINE (KUBOTA V2003-TE)

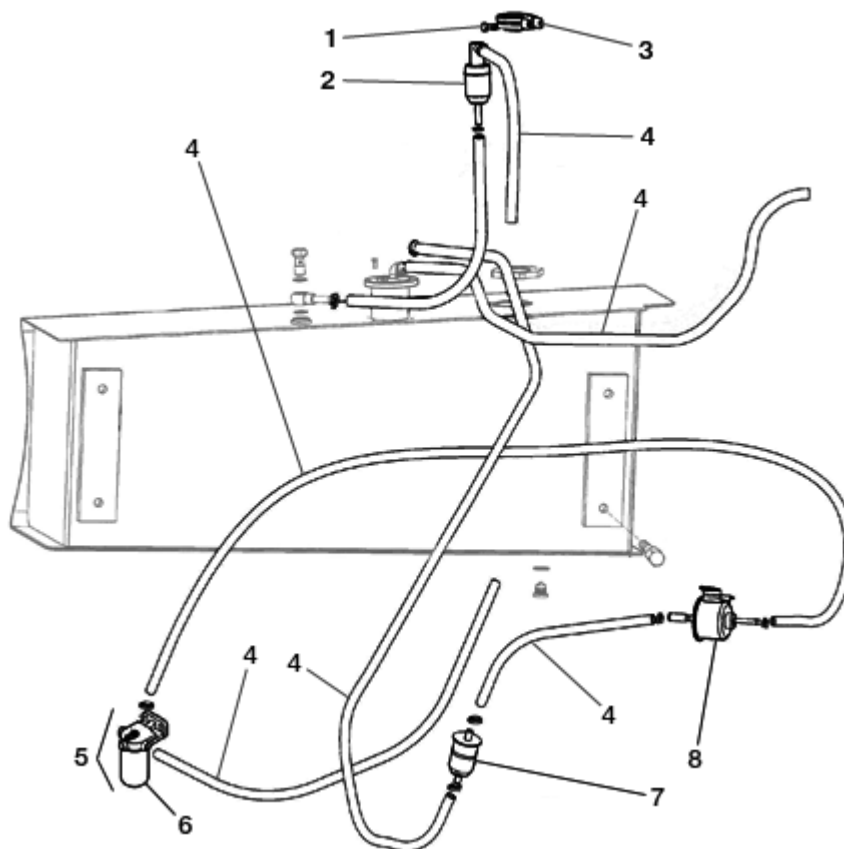
FUEL TANK (PART 1)



| FIGURE | REFERENCE | DENOMINATION | AMOUNT |
|--------|--------------|-------------------------|--------|
| 001 | 20.02040.01 | FUEL TANK 50 L | 1 |
| 002 | 28.00340.00 | NIPPLE SCREW SIM. | 1 |
| 003 | 615.04020.66 | SCREW DIN84 | 4 |
| 004 | 10.14287.00 | LEVEL | 1 |
| 005 | 15.01524.01 | CAP WITH LOCK 40X72 | 1 |
| 006 | 28.00341.00 | METAL BUNA GASKET D1/4' | 2 |
| 007 | 45.04106.00 | NIPPLE O/TB | 1 |
| 008 | 107.14000.10 | WASHER AL. 14x20x1,5 | 1 |
| 009 | 10.00921.00 | CAP | 1 |
| 010 | 603.12020.86 | SCREW DIN933 | 2 |

ENGINE (KUBOTA V2003-TE)

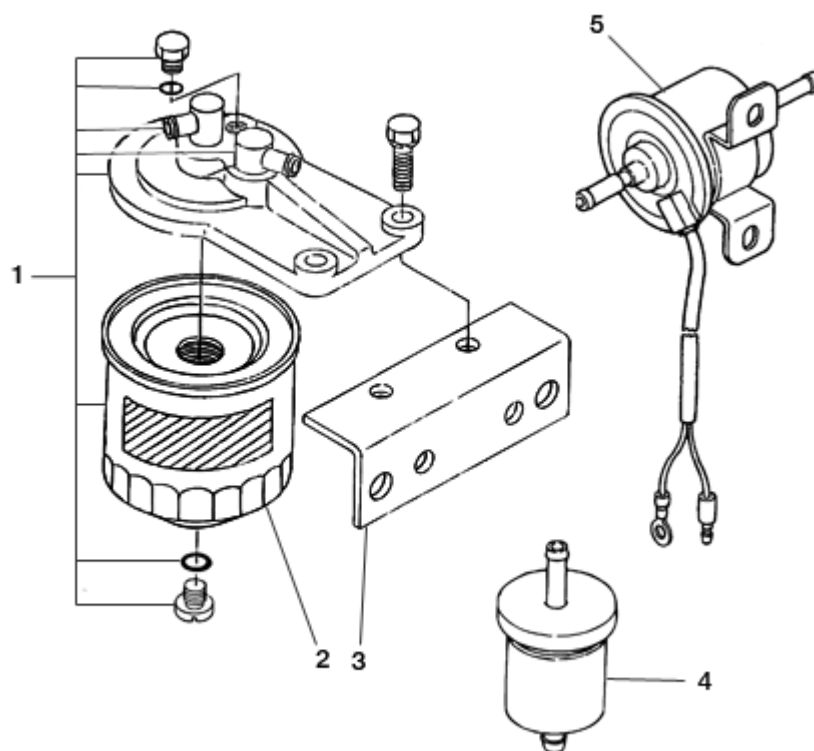
FUEL TANK (PART 2)



| FIGURE | REFERENCE | DENOMINATION | AMOUNT |
|--------|--------------|-----------------------|--------|
| 001 | 603.06015.86 | SCREW DIN933 M6x15 | 2 |
| 002 | 45.01526.00 | FILTER FUEL | 2 |
| 003 | 830.03006.00 | CLAMP LOOP | 2 |
| 004 | 469.03014.00 | HOSE L/P MAT. 8X14 | 1 |
| 005 | KU1560143010 | FUEL FILTER ASSY | 1 |
| 006 | KU.10005.00 | FUEL FILTER CARTRIDGE | 1 |
| 007 | KU.10034.00 | PRE-FILTER | 1 |
| 008 | KU.10033.00 | ELECTRICAL FUEL PUMP | 1 |

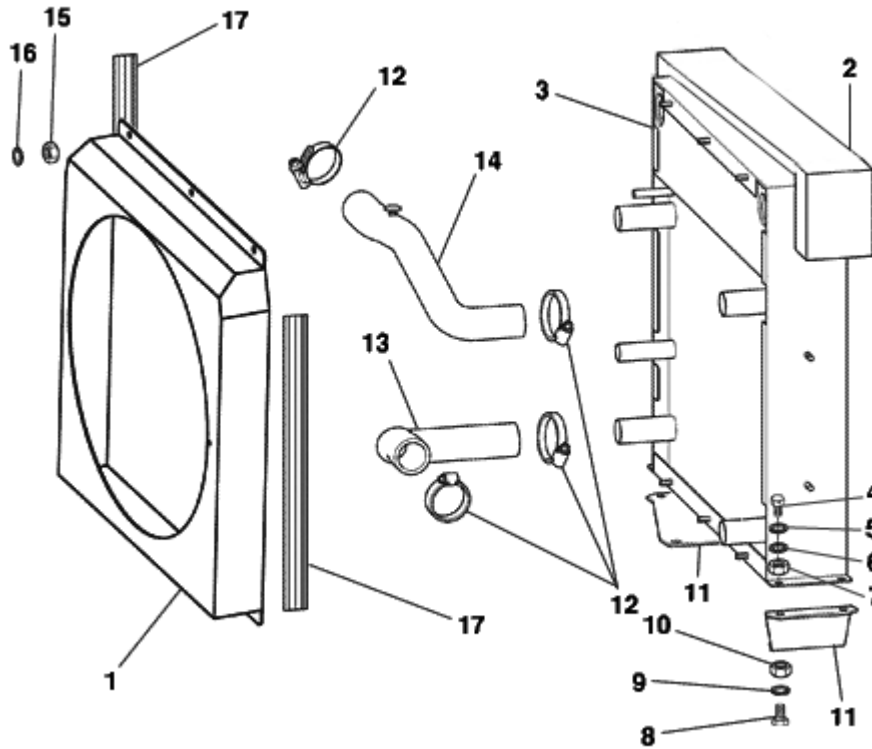
ENGINE (KUBOTA V2003-TE)

FUEL TANK (PART 3)



| FIGURE | REFERENCE | DENOMINATION | AMOUNT |
|--------|--------------|-----------------------|--------|
| 001 | KU1560143010 | FUEL FILTER ASSY | 1 |
| 002 | KU.10005.00 | FUEL FILTER CARTRIDGE | 1 |
| 003 | KU1941643433 | FUEL FILTER SUPPORT | 1 |
| 004 | KU.10034.00 | PRE-FILTER | 1 |
| 005 | KU.10033.00 | ELECTRICAL FUEL PUMP | 1 |

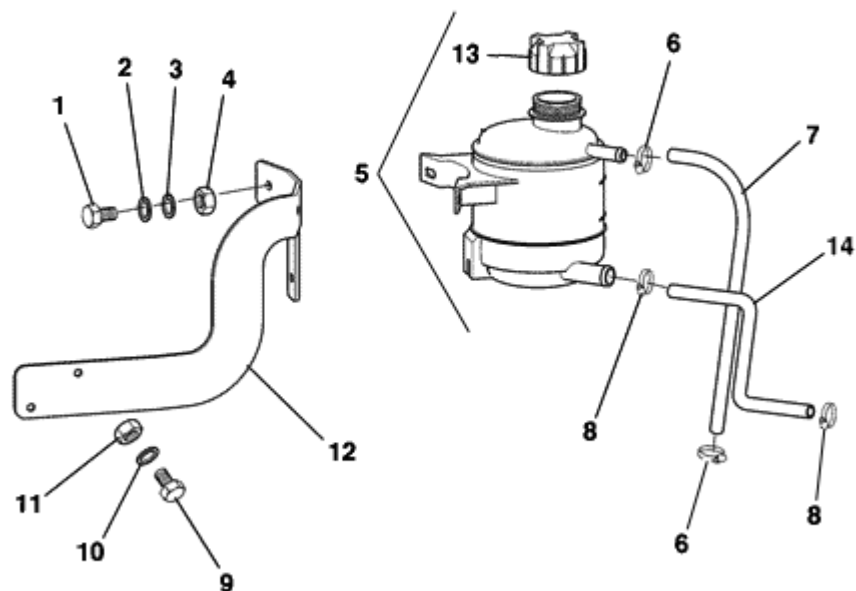
ENGINE (KUBOTA V2003-TE) RADIATOR (PART 1)



| FIGURE | REFERENCE | DENOMINATION | AMOUNT |
|--------|--------------|-------------------------------|--------|
| 001 | 20.02053.02 | RADIATOR PROTECTOR 65X450X499 | 1 |
| 002 | 20.02072.01 | RADIATOR PROTECTION | 1 |
| 003 | 20.02051.01 | RADIATOR | 1 |
| 004 | 603.08020.86 | SCREW DIN933 M8x20 | 4 |
| 005 | 101.08000.66 | WASHER DIN125 D8 | 4 |
| 006 | 104.08000.00 | WASHER DIN7980 D8 | 4 |
| 007 | 701.08000.66 | NUT DIN934 M8x1,25 | 4 |
| 008 | 603.10040.86 | SCREW DIN933 | 4 |
| 009 | 101.10000.66 | WASHER DIN125 D10 | 4 |
| 010 | 711.10000.66 | NUT DIN982 M10x1,5 | 4 |
| 011 | 57.02053.00 | SUPPORT | 2 |
| 012 | 912.30045.00 | CLAMP | 4 |
| 013 | 20.02054.00 | TUBE B/P D30XD34 | 1 |
| 014 | 20.02055.00 | TUBE | 1 |
| 015 | 701.06000.66 | NUT DIN934 M6x1 | 6 |
| 016 | 104.06000.00 | WASHER DIN7980 D6 | 6 |
| 017 | 472.00411.00 | RUBBER PROFILE MAT. | 2 |

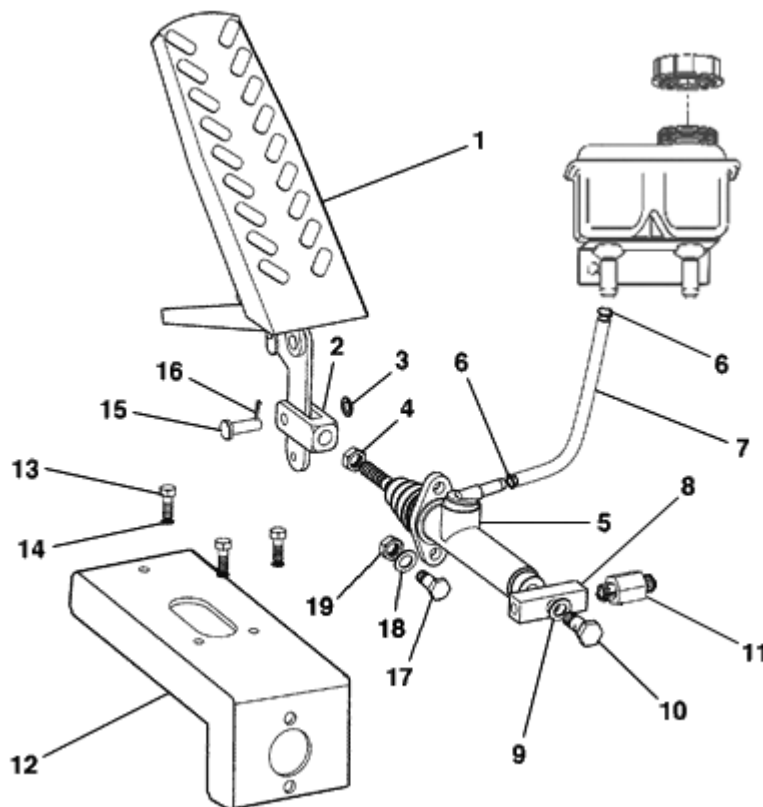
ENGINE (KUBOTA V2003-TE)

RADIATOR (PART 2)



| FIGURE | REFERENCE | DENOMINATION | AMOUNT |
|--------|--------------|--------------------|--------|
| 001 | 603.06020.86 | SCREW DIN933 M6x20 | 3 |
| 002 | 101.06000.66 | WASHER DIN125 D6 | 3 |
| 003 | 104.06000.00 | WASHER DIN7980 D6 | 3 |
| 004 | 701.06000.66 | NUT DIN934 M6x1 | 3 |
| 005 | 46.00171.01 | EXPANSION TANK | 1 |
| 006 | 912.08016.66 | CLAMP | 2 |
| 007 | 469.01017.00 | TUBE B/P 10X17 | 1 |
| 008 | 912.20032.00 | CLAMP | 2 |
| 009 | 603.06015.86 | SCREW DIN933 M6x15 | 2 |
| 010 | 104.06000.00 | WASHER DIN7980 D6 | 2 |
| 011 | 701.06000.66 | NUT DIN934 M6x1 | 2 |
| 012 | 57.02059.00 | SUPPORT | 1 |
| 013 | 09.00172.02 | TANK CAP 1 BAR | 1 |
| 014 | 464.03024.00 | TUBE MAT. | 1 |

TRANSMISSION INCHING PEDAL

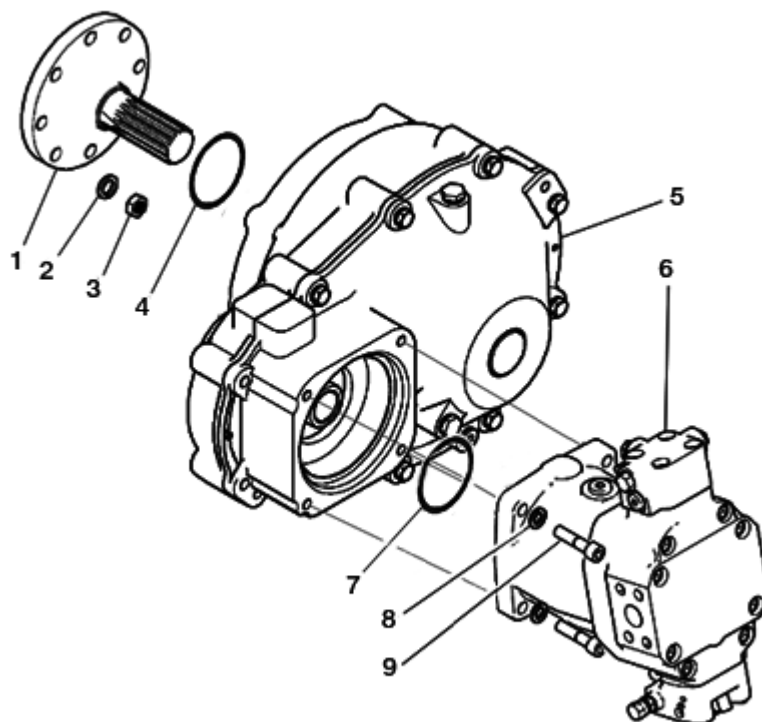


| FIGURE | REFERENCE | DENOMINATION | AMOUNT |
|--------|--------------|---------------------|--------|
| 001 | 43.80250.01 | REDUCER BOX | 1 |
| 002 | 20.05040.00 | FORK | 1 |
| 003 | 101.08000.66 | WASHER DIN125 D8 | 1 |
| 004 | 701.10000.66 | NUT DIN934 M10x1,5 | 1 |
| 005 | 20.03070.00 | BRAKE PUMP | 1 |
| 006 | 912.08000.66 | CLAMP D8-8 | 2 |
| 007 | 20.05004.00 | TUBE | 1 |
| 008 | 20.03075.00 | CONNECTOR | 1 |
| 009 | 106.10000.20 | WASHER CU 10x15x1,5 | 2 |
| 010 | 46.01065.01 | NIPPLE SCREW SIM. | 1 |
| 011 | 20.03072.00 | PRESSURE SWITCH | 1 |
| 012 | 20.03073.00 | BRAKE PUMP SUPPORT | 1 |
| 013 | 603.06025.86 | SCREW DIN933 M6x25 | 3 |
| 014 | 104.06000.00 | WASHER DIN7980 D6 | 3 |
| 015 | 01.00514.01 | AXLE CIL/CPA | 1 |
| 016 | 401.02020.66 | SPLIT PIN DIN94 | 1 |
| 017 | 603.08025.86 | SCREW DIN933 M8x25 | 2 |
| 018 | 104.08000.00 | WASHER DIN7980 D8 | 2 |

**TRANSMISSION
INCHING PEDAL**

| FIGURE | REFERENCE | DENOMINATION | AMOUNT |
|--------|--------------|--------------------|--------|
| 019 | 701.08000.66 | NUT DIN934 M8x1,25 | 2 |

TRANSMISSION REDUCTION BOX



| FIGURE | REFERENCE | DENOMINATION | AMOUNT |
|--------|--------------|-------------------------|--------|
| 001 | 57.03102.00 | CYLINDER AXLE | 1 |
| 002 | 106.10000.20 | WASHER CU 10x15x1,5 | 1 |
| 003 | 720.10000.66 | NUT DIN985 | 8 |
| 004 | 201.25435.50 | GASKET | 1 |
| 005 | 57.03150.00 | REDUCER BOX | 1 |
| 006 | 57.03260.00 | HYDROSTATIC MOTOR 80CC. | 1 |
| 007 | 201.10025.50 | O-RING DIN3770 | 1 |
| 008 | 104.12000.00 | WASHER DIN7980 D12 | 4 |
| 009 | 601.12045.86 | SCREW DIN912 | 4 |