



PARTS MANUAL

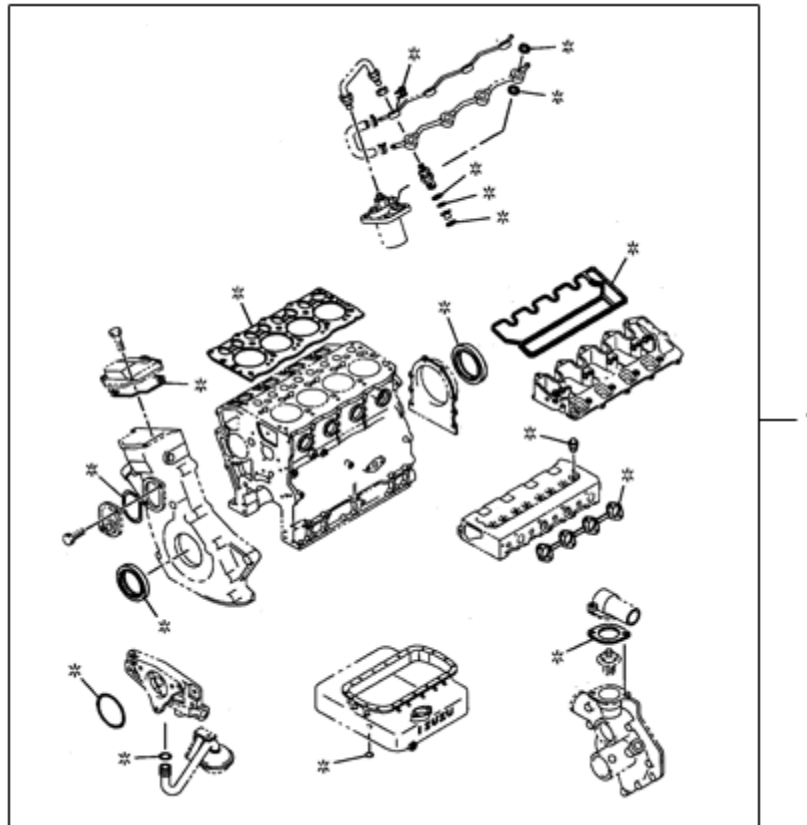
**MAINTENANCE
FILTERS KIT**



| FIGURE | REFERENCE | DENOMINATION | AMOUNT |
|--------|--------------|---------------------------|--------|
| 001 | KF.20400RE00 | C 200 H x2/x4 FILTERS KIT | 1 |

ENGINE (ISUZU 4LE2)

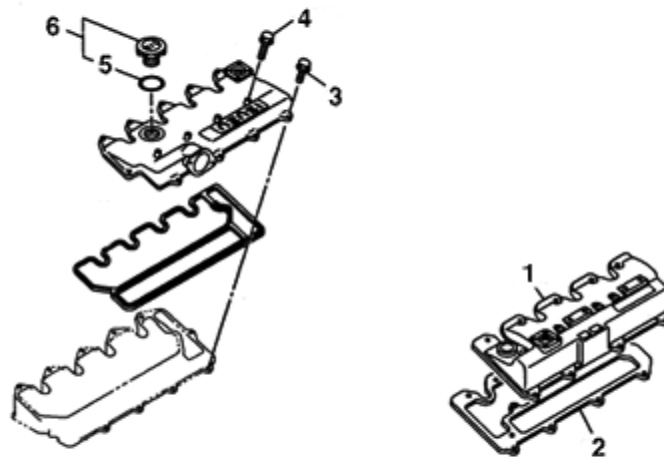
ENGINE GASKET KIT



| FIGURE | REFERENCE | DENOMINATION | AMOUNT |
|--------|--------------|-------------------|--------|
| 001 | IZ5878137320 | ENGINE GASKET KIT | 1 |

ENGINE (ISUZU 4LE2)

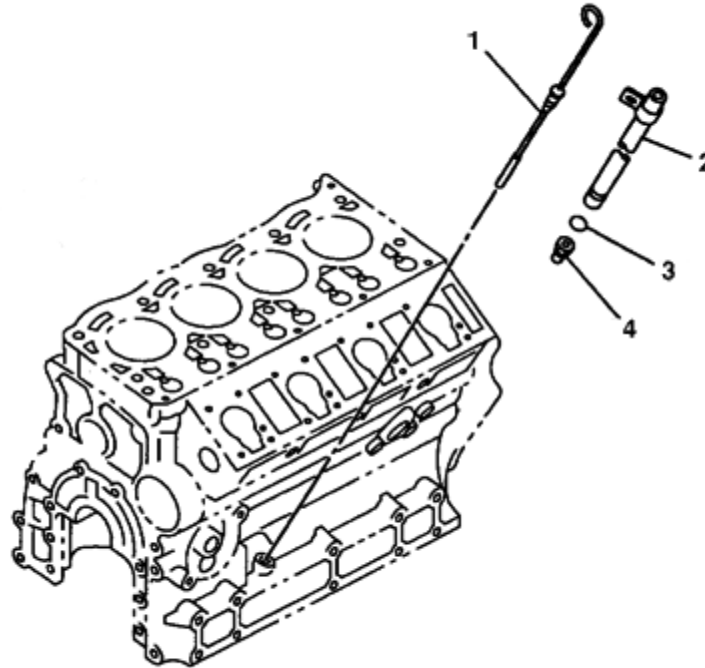
CYLINDER HEAD



| FIGURE | REFERENCE | DENOMINATION | AMOUNT |
|--------|--------------|-----------------------|--------|
| 001 | IZ8972001902 | CYLINDER HEAD COVER | 1 |
| 002 | IZ.10020.00 | HEAD TO COVER GASKET | 1 |
| 003 | IZ0280806200 | HEAD COVER BOLT M6X20 | 9 |
| 004 | IZ0280806450 | HEAD COVER BOLT M6X45 | 4 |
| 005 | IZ8941236231 | OIL FILLER GASKET | 1 |
| 006 | 05.60410MI23 | OIL FILLER CAP | 1 |

ENGINE (ISUZU 4LE2)

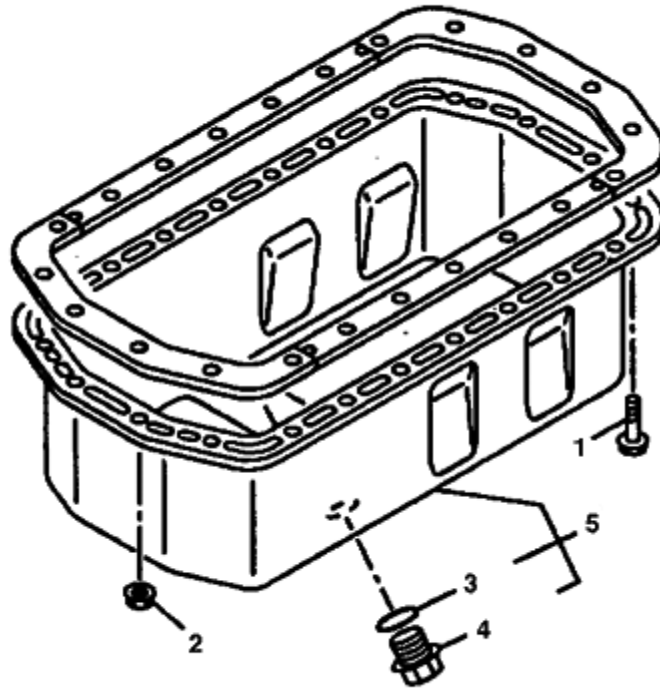
LEVEL GAUGE



| FIGURE | REFERENCE | DENOMINATION | AMOUNT |
|--------|--------------|----------------------------|--------|
| 001 | IZ.10023.00 | OIL LEVEL GAUGE | 1 |
| 002 | IZ8970967000 | GUIDE OIL LEVEL GAUGE TUBE | 1 |
| 003 | IZ5096230020 | GUIDE TUBE GASKET | 1 |
| 004 | IZ8944558940 | GUIDE TUBE NIPPLE | 1 |

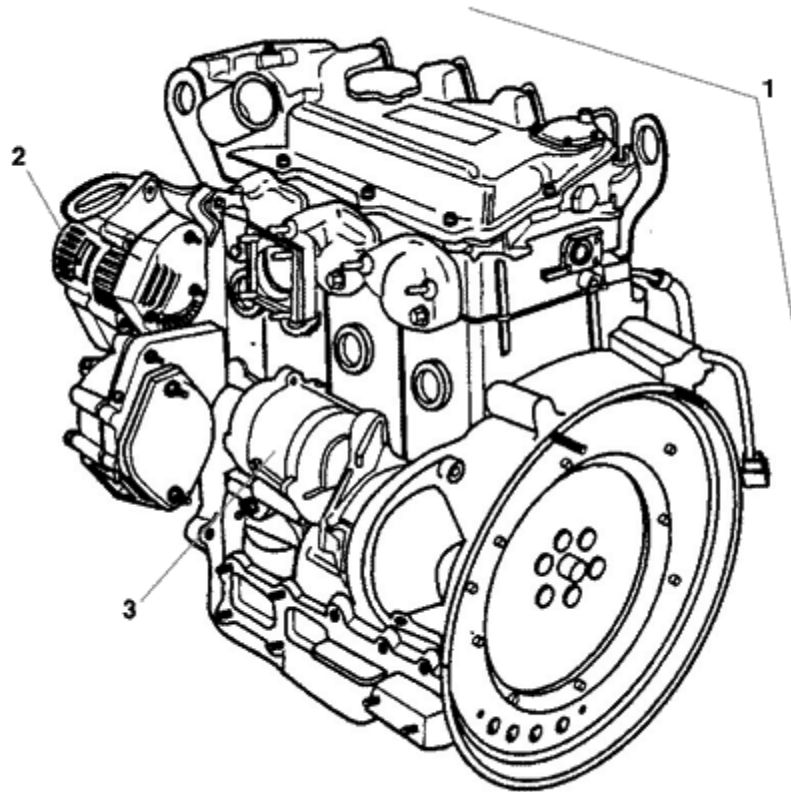
ENGINE (ISUZU 4LE2)

OIL PAN



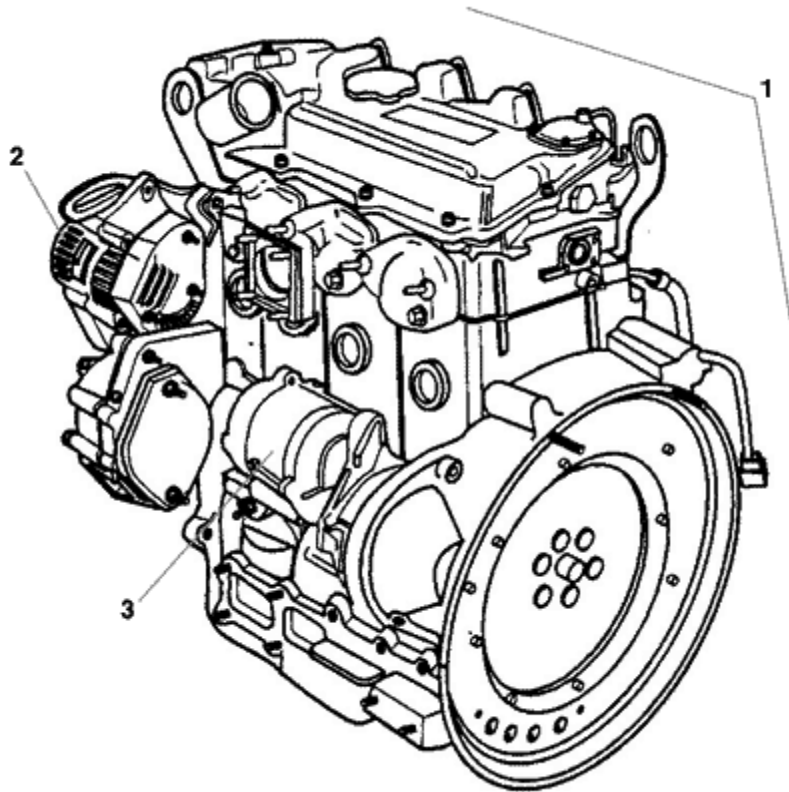
| FIGURE | REFERENCE | DENOMINATION | AMOUNT |
|--------|--------------|-------------------|--------|
| 001 | IZ8971351410 | BOLT M6X13 | 20 |
| 002 | IZ8971378360 | NUT M6X13 | 2 |
| 003 | 86.70000.35 | DRAIN PLUG GASKET | 1 |
| 004 | 05.91121MI02 | PLUG | 1 |
| 005 | IZ.10021.00 | OIL PAN ASSY | 1 |

ENGINE (ISUZU 4LE2)
ENGINE (PART 1)



| FIGURE | REFERENCE | DENOMINATION | AMOUNT |
|--------|-------------|----------------------------------|--------|
| 001 | 20.02001.01 | DIESEL ENGINE ISUZU 4LE2 35,5 KW | 1 |
| 002 | IZ.10001.00 | GENERATOR | 1 |
| 003 | IZ.10002.00 | STARTING ENGINE | 1 |

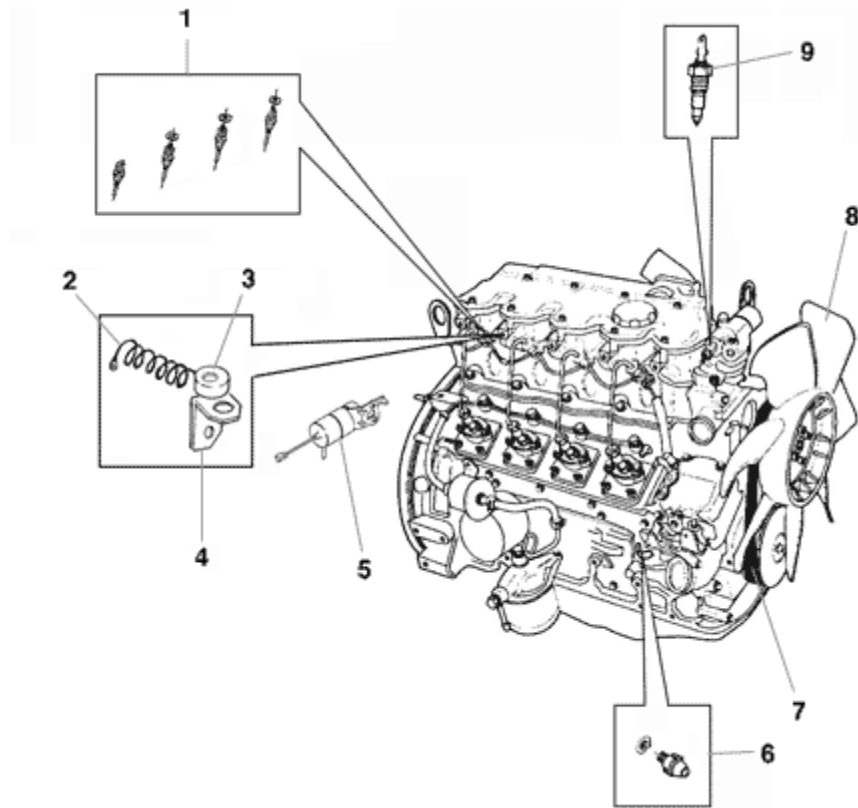
ENGINE (ISUZU 4LE2)
ENGINE (PART 1)



| FIGURE | REFERENCE | DENOMINATION | AMOUNT |
|--------|-------------|-----------------|--------|
| 001 | 20.02001.03 | | 1 |
| 002 | IZ.10001.00 | GENERATOR | 1 |
| 003 | IZ.10002.00 | STARTING ENGINE | 1 |

ENGINE (ISUZU 4LE2)

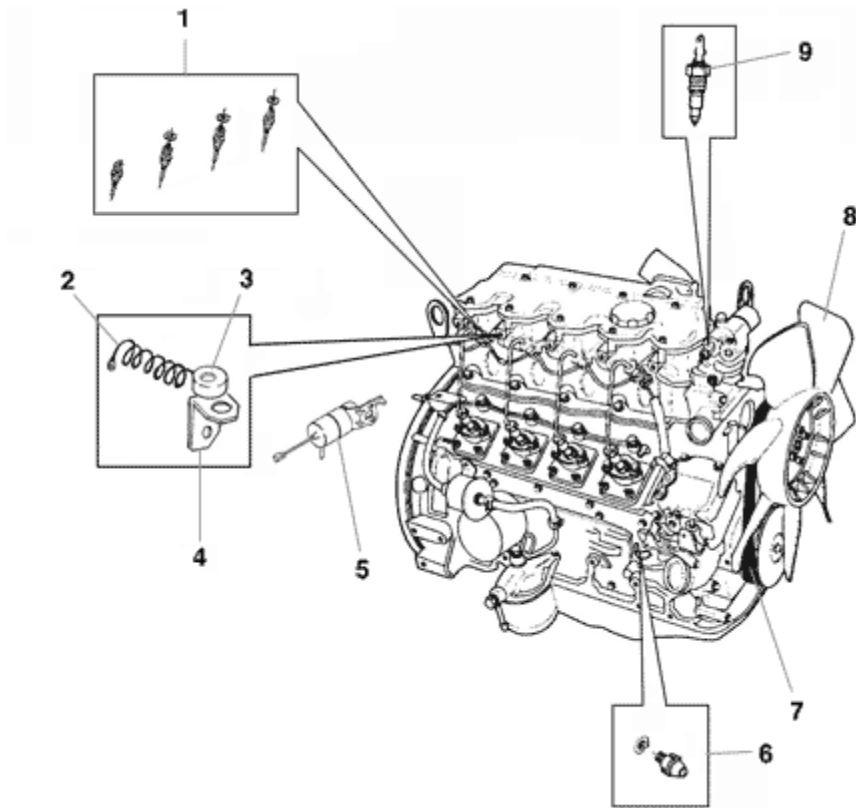
ENGINE (PART 2)



| FIGURE | REFERENCE | DENOMINATION | AMOUNT |
|--------|-------------|-------------------------|--------|
| 001 | IZ.10003.00 | HEATER | 4 |
| 002 | 45.04545.00 | ELECTRICAL CABLE | 1 |
| 003 | 43.02115.00 | RESISTOR | 1 |
| 004 | 45.04210.00 | STRIGHT SUPPORT | 1 |
| 005 | IZ.10006.00 | STOP SOLENOID | 1 |
| 006 | IZ.10009.00 | OIL WARNING SWITCH | 1 |
| 007 | IZ.10010.00 | FAN BELT | 1 |
| 008 | IZ.10007.00 | FAN | 1 |
| 009 | IZ.10008.00 | OVERHEAT WARNING SWITCH | 1 |

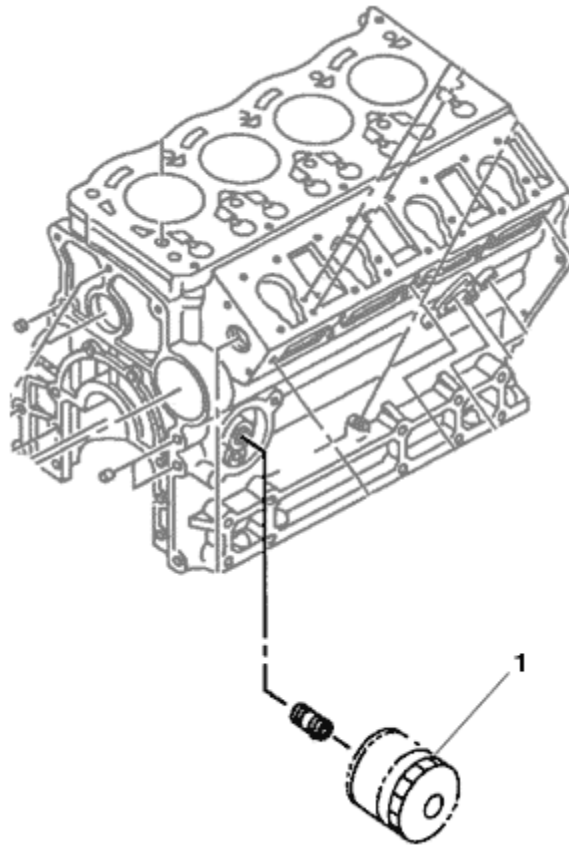
ENGINE (ISUZU 4LE2)

ENGINE (PART 2)



| FIGURE | REFERENCE | DENOMINATION | AMOUNT |
|--------|-------------|-------------------------|--------|
| 001 | IZ.10003.00 | HEATER | 4 |
| 002 | 45.04545.00 | ELECTRICAL CABLE | 1 |
| 003 | 43.02115.00 | RESISTOR | 1 |
| 004 | 45.04210.00 | STRIGHT SUPPORT | 1 |
| 005 | IZ.10006.00 | STOP SOLENOID | 1 |
| 006 | IZ.10009.00 | OIL WARNING SWITCH | 1 |
| 007 | IZ.10010.00 | FAN BELT | 1 |
| 008 | 20.02006.00 | FAN | 1 |
| 009 | IZ.10008.00 | OVERHEAT WARNING SWITCH | 1 |

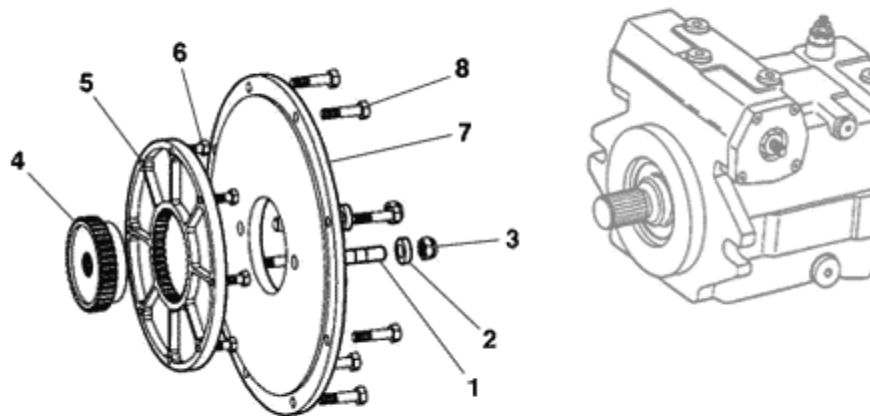
ENGINE (ISUZU 4LE2)
ENGINE (PART 3)



| FIGURE | REFERENCE | DENOMINATION | AMOUNT |
|--------|-------------|--------------|--------|
| 001 | IZ.10004.00 | OIL FILTER | 1 |

ENGINE (ISUZU 4LE2)

ACOUPLEMENT POMPE

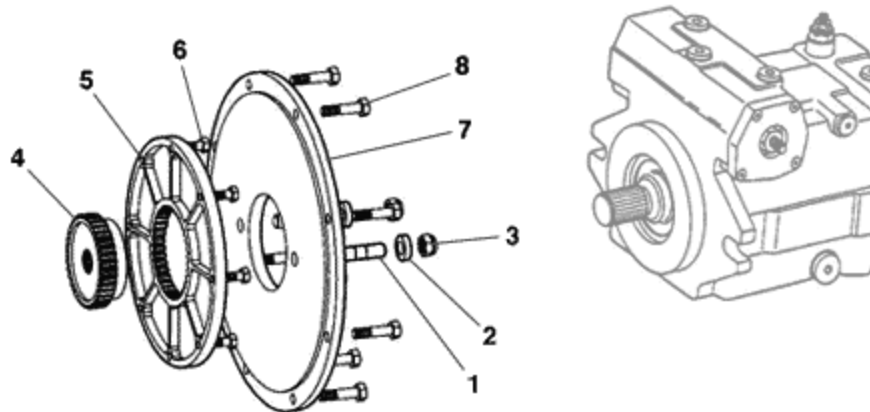


| FIGURE | REFERENCE | DENOMINATION | AMOUNT |
|--------|--------------|----------------------|--------|
| 001 | 43.40129.00 | STUD DIN939 | 2 |
| 002 | 15.30110.00 | WASHER 14x7x26 | 2 |
| 003 | 711.14000.66 | NUT DIN982 M14 8.8 K | 2 |
| 004 | 63.01002.00 | COUPLING GEA/GEA | 1 |
| 005 | 62.20912.00 | COUPLING CYL/GEA | 1 |
| 006 | 603.08035.86 | BOLT DIN933 M8x35 | 8 |
| 007 | 63.01003.00 | COUPLING CYL/CYL | 1 |
| 008 | 604.10030.86 | BOLT DIN931 M10x30 | 8 |

ENGINE (ISUZU 4LE2)

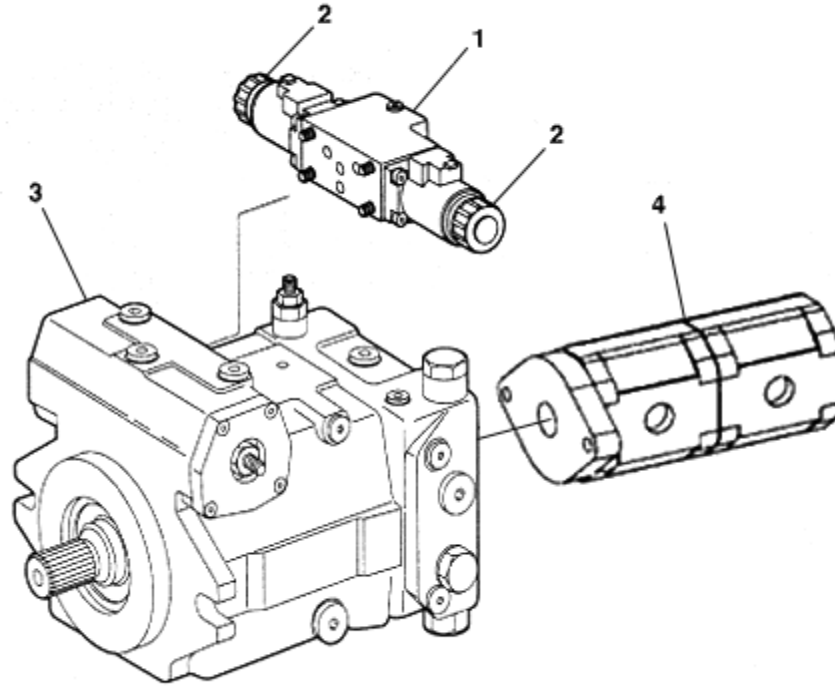
ACOUPLEMENT POMPE

CHASSIS: 62097



| FIGURE | REFERENCE | DENOMINATION | AMOUNT |
|--------|--------------|--|--------|
| 001 | 43.40129.00 | STUD DIN939 | 2 |
| 002 | 15.30110.00 | WASHER 14x7x26 | 2 |
| 003 | 711.14000.66 | NUT DIN982 M14 8.8 K | 2 |
| 004 | 63.01002.01 | COUPLING 13/32 PITCH Z=15 | 1 |
| 005 | 62.20912.01 | COUPLING D241X20 | 1 |
| 006 | 601.08035.86 | HEXAGON SOCKET HEAD SCREW DIN912 M8x35 | 8 |
| 007 | 63.01003.01 | coupling D102XD356X24 | 1 |
| 008 | 604.10030.86 | BOLT DIN931 M10x30 | 8 |

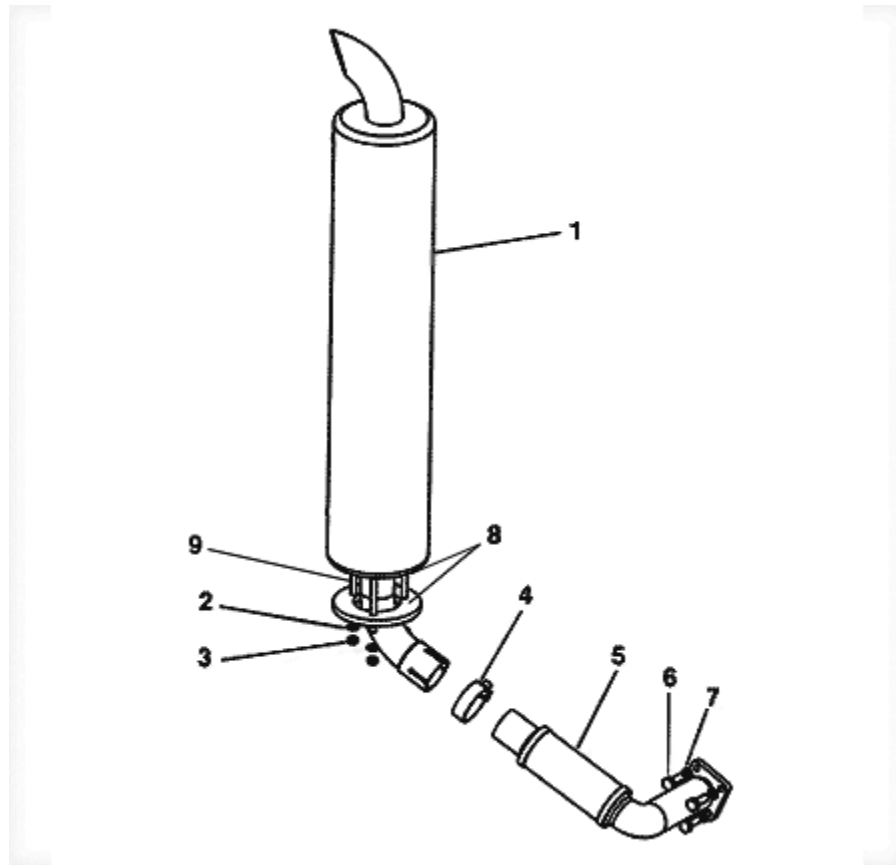
ENGINE (ISUZU 4LE2) HYDROSTATIC PUMP



| FIGURE | REFERENCE | DENOMINATION | AMOUNT |
|--------|-------------|---------------------------------|--------|
| 001 | RX.30006.00 | FULL ELECTROVALVE BLOCK | 1 |
| 002 | RX.30005.00 | SPOOL (FRONT/REAR SPEED) | 2 |
| 003 | 20.03270.00 | HYDR. PUMP 45CC.300B HYDROMATIC | 1 |
| 004 | 43.61522.00 | HYDR. PUMP | 1 |

ENGINE (ISUZU 4LE2)

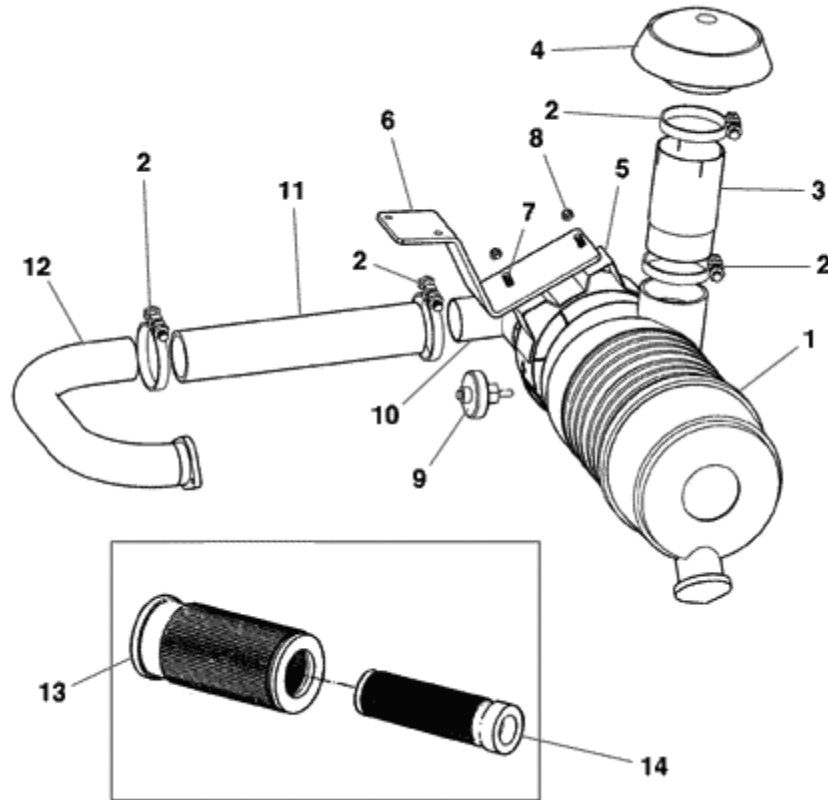
ECHAPPEMENT



| FIGURE | REFERENCE | DENOMINATION | AMOUNT |
|--------|--------------|--------------------------|--------|
| 001 | 20.02026.01 | MUFFLER 1090 | 1 |
| 002 | 112.08000.66 | WASHER DIN9021 Ø8 | 3 |
| 003 | 701.08000.66 | NUT DIN934 M8x1,25 | 3 |
| 004 | 936.53000.66 | HOSE CLAMP DIN 71555 Ø53 | 1 |
| 005 | 20.02023.02 | EXHAUST PIPE D50X350 | 1 |
| 006 | 604.08070.86 | BOLT DIN931 M8x70 | 4 |
| 007 | 104.08000.00 | WASHER DIN7980 Ø8 | 4 |
| 008 | 20.02020.00 | FLANGE | 2 |
| 009 | 20.02037.00 | | 3 |

ENGINE (ISUZU 4LE2)

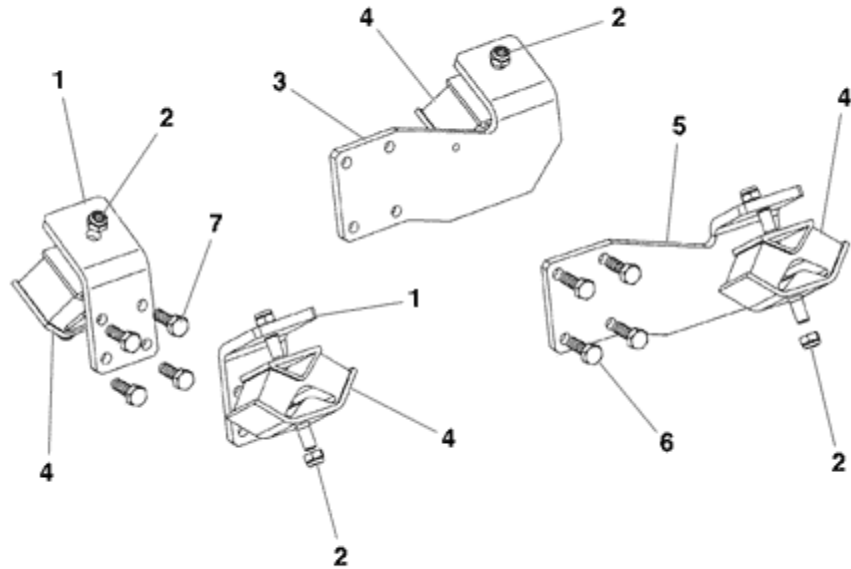
FILTRE A AIR



| FIGURE | REFERENCE | DENOMINATION | AMOUNT |
|--------|--------------|--------------------------------------|--------|
| 001 | 43.01210.00 | FILTER, COMP. AIR | 1 |
| 002 | 935.60000.66 | HOSE CLAMP S Ø60-80 | 4 |
| 003 | 20.02025.00 | TUBE, METALLIC 80 Ø80xØ74x130 | 1 |
| 004 | 43.01212.00 | GUARD MUFFLER | 1 |
| 005 | 43.01211.00 | HOSE CLAMP | 1 |
| 006 | 20.02045.00 | AIR FILTER SUPPORT | 1 |
| 007 | 603.08025.86 | BOLT DIN933 M8x25 | 2 |
| 008 | 711.08000.66 | NUT DIN982 M8 | 2 |
| 009 | 43.50119.00 | INDICATOR, AIR FILTER | 1 |
| 010 | 20.02024.00 | TUBE, METALLIC 67 Ø70xØ66x90 Ø50xØ46 | 1 |
| 011 | 20.02047.00 | TUBE (CH 200) | 1 |
| 012 | 20.02048.01 | ADMISSION MANIFOLD 60X175X365 | 1 |
| 013 | 43.01213.00 | FILTER ELEMENT 8x140x320 | 1 |
| 014 | 43.01214.00 | FILTER ELEMENT 60x80x318 | 1 |

ENGINE (ISUZU 4LE2)

ENGINE SUPPORTS

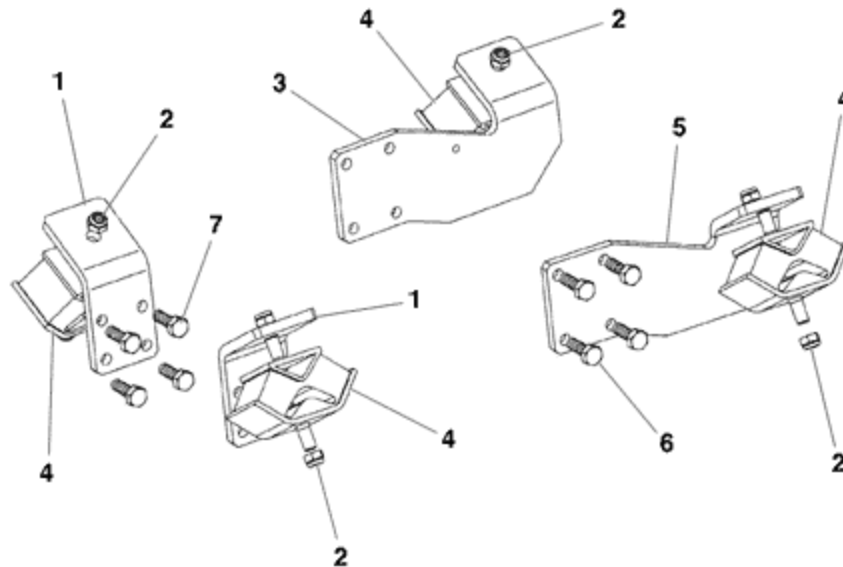


| FIGURE | REFERENCE | DENOMINATION | AMOUNT |
|--------|--------------|--------------------------------|--------|
| 001 | 20.02012.01 | ENGINE SUPPORT 10X70X105 | 2 |
| 002 | 711.12000.66 | NUT DIN982 M12 | 8 |
| 003 | 20.02010.01 | ENGINE SUPPORT 10X132X237 | 1 |
| 004 | 15.97770.01 | SHOCK ABSORBER, 60x120x64 50 A | 4 |
| 005 | 20.02011.01 | ENGINE SUPPORT 10X132X237 | 1 |
| 006 | 603.10035.86 | BOLT DIN933 M10x35 | 8 |
| 007 | 603.10025.86 | BOLT DIN933 M10x25 | 8 |

ENGINE (ISUZU 4LE2)

ENGINE SUPPORTS

CHASSIS: 60512

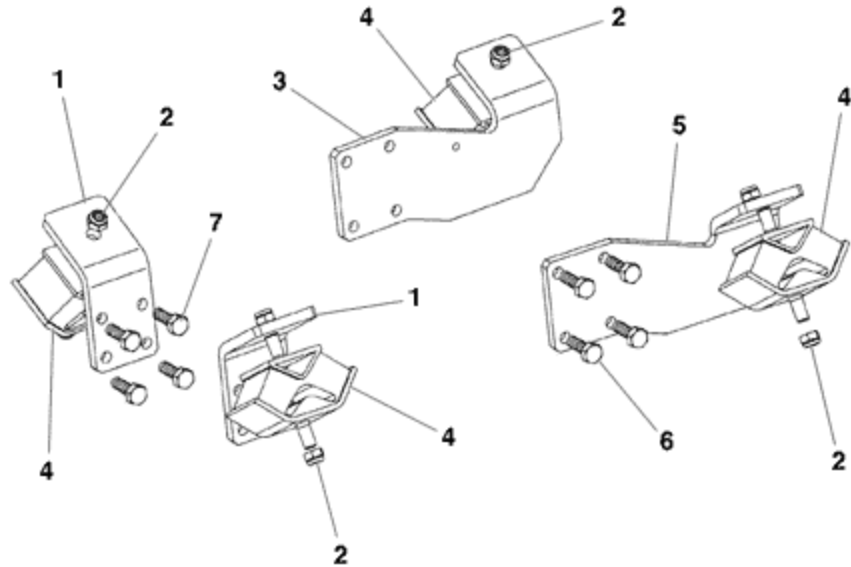


| FIGURE | REFERENCE | DENOMINATION | AMOUNT |
|--------|--------------|--------------------------------|--------|
| 001 | 20.02012.01 | ENGINE SUPPORT 10X70X105 | 2 |
| 002 | 711.12000.66 | NUT DIN982 M12 | 8 |
| 003 | 20.02010.01 | ENGINE SUPPORT 10X132X237 | 1 |
| 004 | 57.02070.00 | SHOCK ABSORBER, 60x120x64 60 A | 4 |
| 005 | 20.02011.01 | ENGINE SUPPORT 10X132X237 | 1 |
| 006 | 603.10035.86 | BOLT DIN933 M10x35 | 8 |
| 007 | 603.10025.86 | BOLT DIN933 M10x25 | 8 |

ENGINE (ISUZU 4LE2)

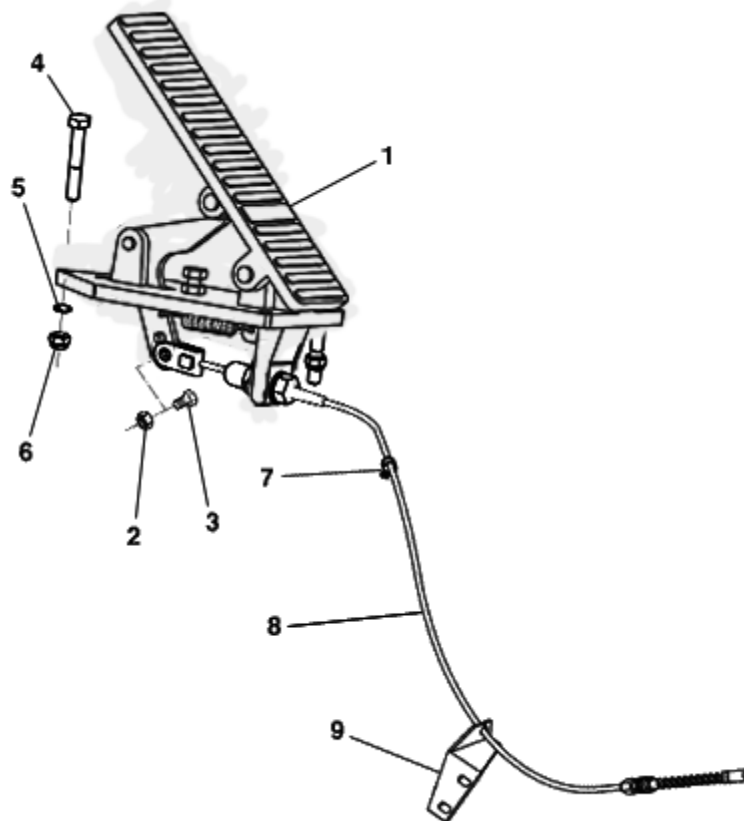
ENGINE SUPPORTS

CHASSIS: 61380



| FIGURE | REFERENCE | DENOMINATION | AMOUNT |
|--------|--------------|--------------------------------|--------|
| 001 | 20.02012.01 | ENGINE SUPPORT 10X70X105 | 2 |
| 002 | 711.12000.66 | NUT DIN982 M12 | 8 |
| 003 | 20.02010.01 | ENGINE SUPPORT 10X132X237 | 1 |
| 004 | 20.02019.00 | SHOCK ABSORBER, 60x120x64 70 A | 4 |
| 005 | 20.02011.01 | ENGINE SUPPORT 10X132X237 | 1 |
| 006 | 603.10035.86 | BOLT DIN933 M10x35 | 8 |
| 007 | 603.10025.86 | BOLT DIN933 M10x25 | 8 |

ENGINE (ISUZU 4LE2) PÉDALE ACCELERATEUR



| FIGURE | REFERENCE | DENOMINATION | AMOUNT |
|--------|--------------|-----------------------------|--------|
| 001 | 12.02020.00 | ACCELERATOR PEDAL VIMOTER | 1 |
| 002 | 711.06000.66 | NUT DIN982 M6 | 2 |
| 003 | 603.06020.86 | BOLT DIN933 M6x20 | 2 |
| 004 | 603.06020.86 | BOLT DIN933 M6x20 | 3 |
| 005 | 104.06000.00 | WASHER DIN7980 Ø6 | 3 |
| 006 | 711.06000.66 | NUT DIN982 M6 | 3 |
| 007 | 830.00606.00 | CLAMP LOOP | 1 |
| 008 | 57.02041.00 | CABLE 1925 | 1 |
| 009 | 10.08055.01 | PIPE GUIDE SUPPORT 3X81X103 | 1 |