



PARTS MANUAL

**MAINTENANCE
FILTERS KIT**



FIGURE	REFERENCE	DENOMINATION	AMOUNT
001	KF.12000RE00	C 150 H x2/x4 FILTERS KIT	1

ENGINE

ENGINE KUBOTA

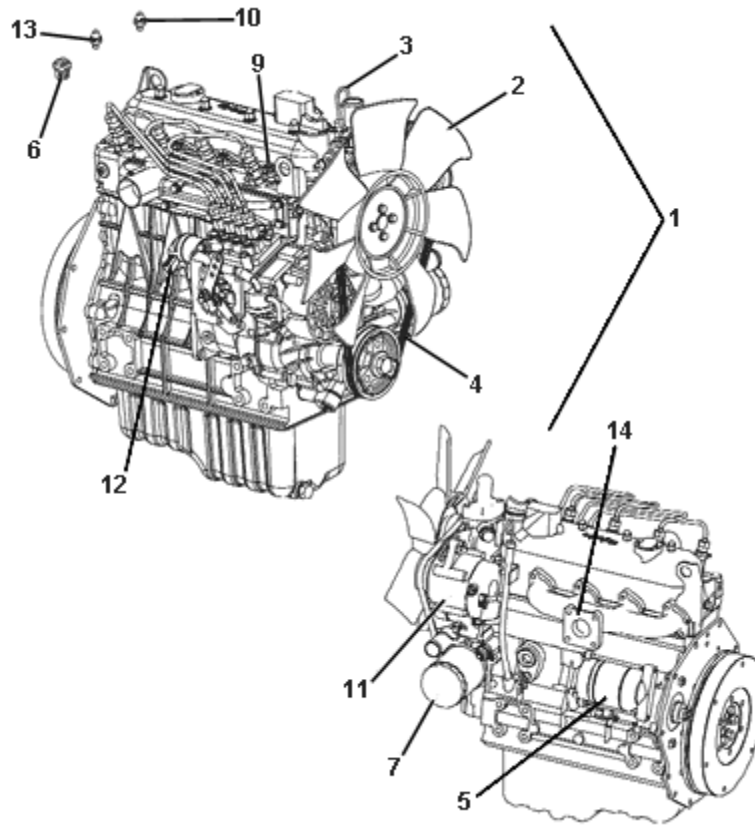


FIGURE	REFERENCE	DENOMINATION	AMOUNT
001	12.02100.00	KUBOTA V1505 ENGINE	1
002	KU1629974112	FAN	1
003	KU1661136412	OIL LEVEL BAR	1
004	KU1628297011	FAN BELT	1
005	KU1661163013	ASSY STARTER	1
006	KU1943473014	ASSY THERMOSTAT	1
007	KU1627132092	CARTRIDGE OIL FILTER	1
008	KU1522143170	ELEMENT, FILTER	1
009	KU1685165512	GLOW PLUG	1
010	KU1584139011	SWITCH, OIL PRESSURE	1
011	KU1667864012	ASSY ALTERNATOR	1
012	KU1720860010	ASSY SOLENOID, STOP	1
013	KU1949883041	SWITCH, TEMPERATURE	1
014	KU1721512311	EXHAUST PIPE	1
015	86.05002.01	KUBOTA TIMER RELAY	1

ENGINE

ACOUPLEMENT POMPE

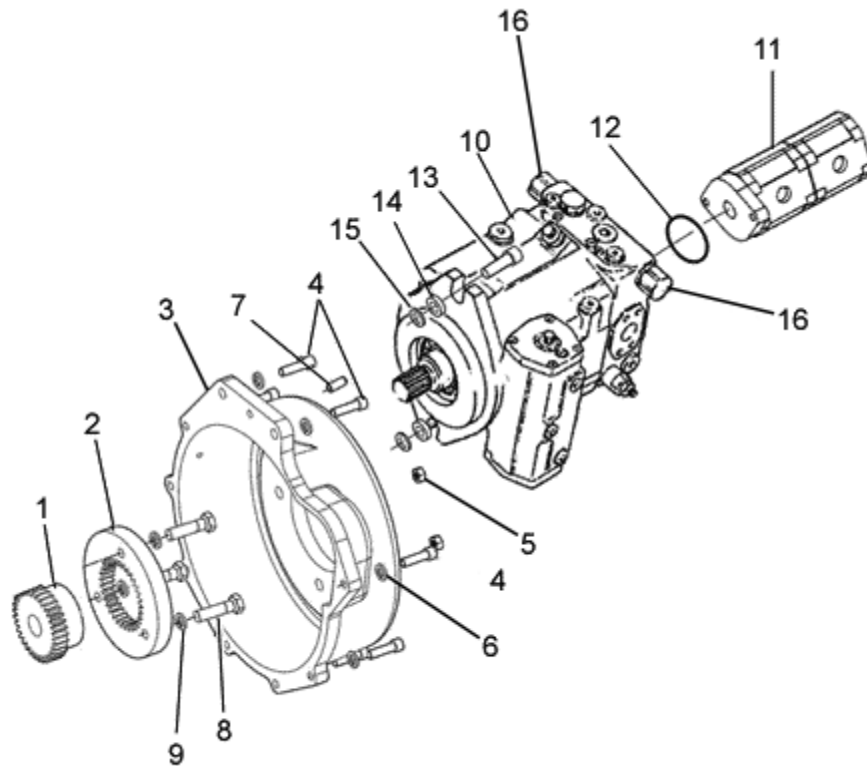


FIGURE	REFERENCE	DENOMINATION	AMOUNT
001	70.02091.00	COUPLING DEN/DEN	1
002	70.02090RE00	COUPLING CYL/CYL	1
003	12.02093.00	COUPLING CYL/CYL D102XD276X100	1
004	601.08030.86	HEXAGON SOCKET HEAD SCREW DIN912 M8x30	9
005	701.08000.66	NUT DIN934 M8x1,25	9
006	104.08000.00	WASHER DIN7980 Ø8	9
007	402.08020.00	ROLLPINDIN1481	1
008	617.10035.86	BOLT DIN931 M10x1,25x35	3
009	104.10000.00	WASHER DIN7980 Ø10	3
010	12.03600.00	HYDROSTATIC PUMP 28CC HYDROMATIC - A10VG28DA1D8	1
011	10.13007.00	OIL PUMP	1
012	201.08218.50	O-RING DIN3770 82,27x85,83x1,78	1
013	601.14040.86	HEXAGON SOCKET HEAD SCREW DIN912 M14x40	2
014	15.30110.00	WASHER 14x7x26	2
015	104.14000.00	WASHER DIN7980 Ø14	2
016	RX.30005.00	SPOOL (FRONT/REAR SPEED)	2

ENGINE

ACOUPLEMENT POMPE

CHASSIS: 61317

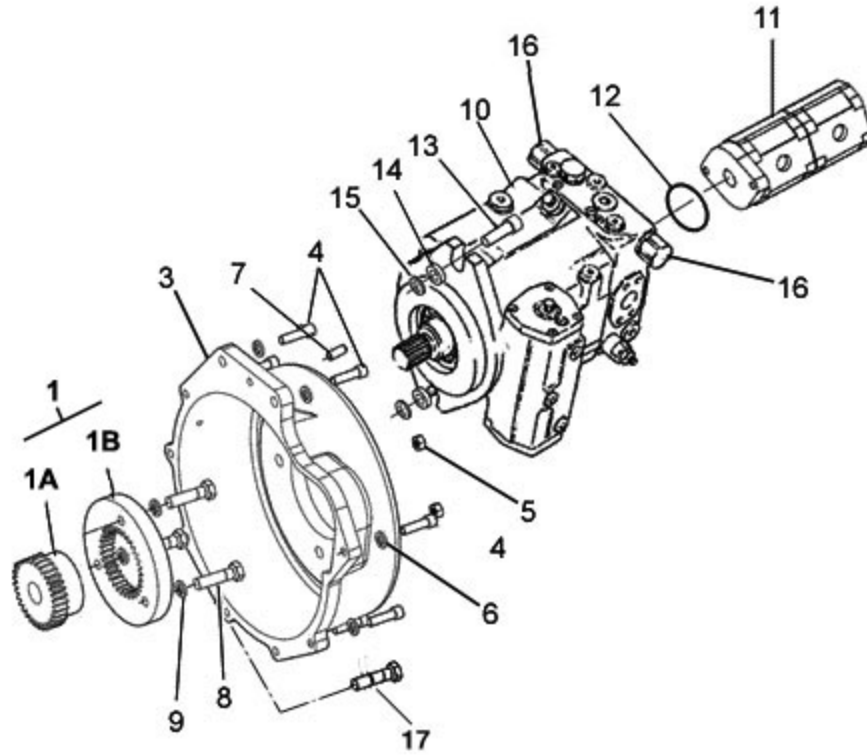


FIGURE	REFERENCE	DENOMINATION	AMOUNT
001	70.02090RE00	COUPLING CYL/CYL	1
001A	70.02091.00	COUPLING DEN/DEN	1
001B	70.02090.00	COUPLING CIL/DEN D135	1
003	12.02093.00	COUPLING CYL/CYL D102XD276X100	1
004	601.08030.86	HEXAGON SOCKET HEAD SCREW DIN912 M8x30	8
005	701.08000.66	NUT DIN934 M8x1,25	9
006	104.08000.00	WASHER DIN7980 Ø8	9
007	402.08020.00	ROLLPINDIN1481	1
008	617.10035.86	BOLT DIN931 M10x1,25x35	3
009	104.10000.00	WASHER DIN7980 Ø10	3
010	12.03600.00	HYDROSTATIC PUMP 28CC HYDROMATIC - A10VG28DA1D8	1
011	10.13007.00	OIL PUMP	1
012	201.08218.50	O-RING DIN3770 82,27x85,83x1,78	1
013	601.14040.86	HEXAGON SOCKET HEAD SCREW DIN912 M14x40	2
014	15.30110.00	WASHER 14x7x26	2
015	104.14000.00	WASHER DIN7980 Ø14	2



016	RX.30005.00	SPOOL (FRONT/REAR SPEED)	2
017	12.02093.99	BOLT M8 L:30	1

ENGINE

ACOUPLEMENT POMPE

CHASSIS: 61561

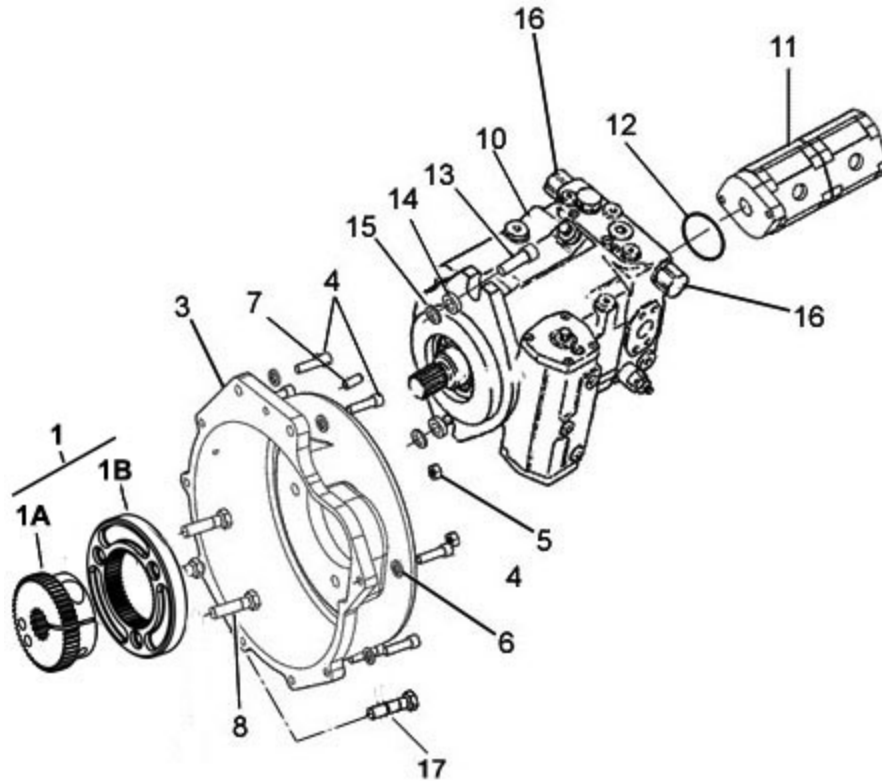


FIGURE	REFERENCE	DENOMINATION	AMOUNT
001	70.02091.01	COUPLING DEN/DEN Z50XZ15X37	1
001A	70.02090RE00	COUPLING CYL/CYL	1
001B	70.02090.01	COUPLING CIL/DEN D135 Z50	1
003	12.02093.00	COUPLING CYL/CYL D102XD276X100	1
004	601.08030.86	HEXAGON SOCKET HEAD SCREW DIN912 M8x30	8
005	701.08000.66	NUT DIN934 M8x1,25	9
006	104.08000.00	WASHER DIN7980 Ø8	9
007	402.08020.00	ROLLPINDIN1481	1
008	633.10030.86	BOLT DIN912 M10x1.25x30	3
010	12.03600.00	HYDROSTATIC PUMP 28CC HYDROMATIC - A10VG28DA1D8	1
011	10.13007.00	OIL PUMP	1
012	201.08218.50	O-RING DIN3770 82,27x85,83x1,78	1
013	601.14040.86	HEXAGON SOCKET HEAD SCREW DIN912 M14x40	2
014	15.30110.00	WASHER 14x7x26	2
015	104.14000.00	WASHER DIN7980 Ø14	2
016	RX.30005.00	SPOOL (FRONT/REAR SPEED)	2



017 12.02093.99 BOLT M8 L:30

1

ENGINE ECHAPPEMENT

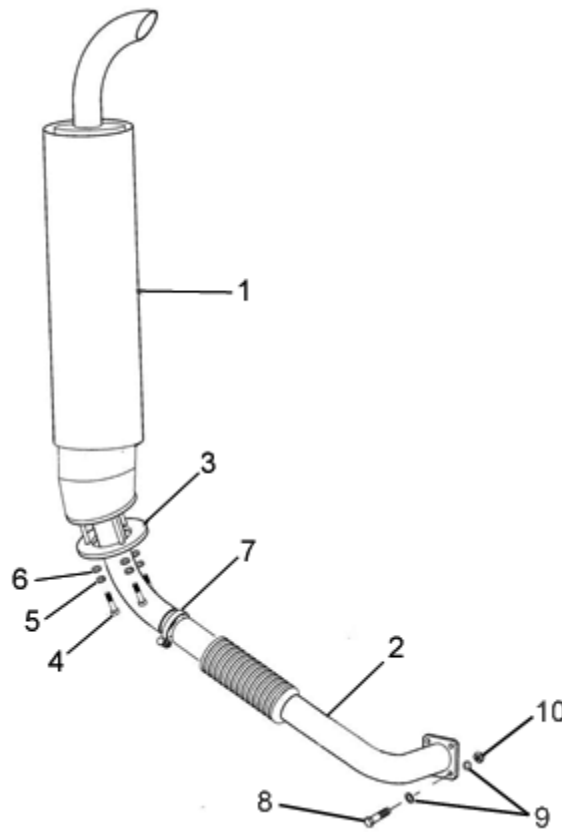


FIGURE	REFERENCE	DENOMINATION	AMOUNT
001	12.02070.00	MUFFLER	1
002	10.02275.01	EXHAUST MANIFOLD	1
003	20.02020.00	FLANGE	1
004	604.08070.86	BOLT DIN931 M8x70	3
005	104.08000.00	WASHER DIN7980 Ø8	3
006	101.08000.66	WASHER DIN125 Ø8	3
007	935.47051.66	HOSE CLAMP SUPER Ø47-51	1
008	604.09035.86	BOLT DIN931 M9x35	4
009	104.09000.00	WASHER DIN7980 Ø9	8
010	701.09000.66	NUT DIN934 M9x1,25	4

ENGINE
ECHAPPEMENT
 CHASSIS: 47744

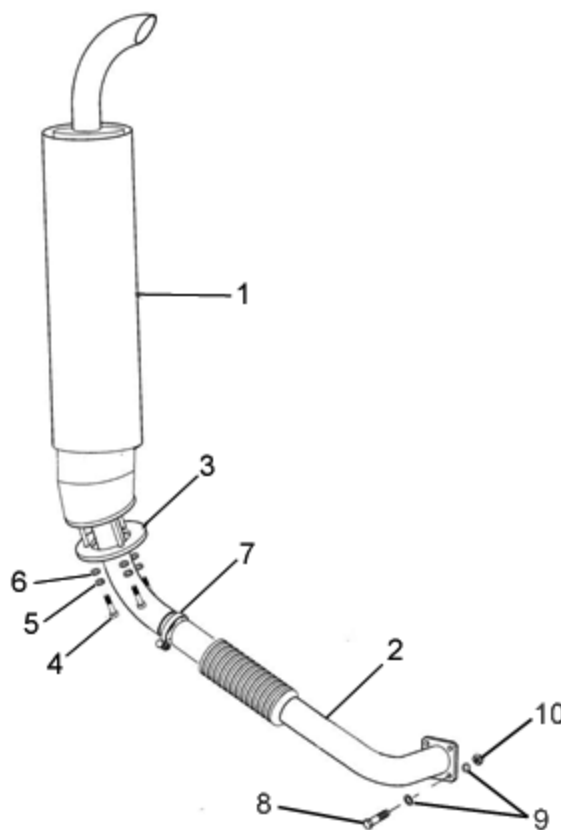


FIGURE	REFERENCE	DENOMINATION	AMOUNT
001	12.02070.01	MUFFLER	1
002	10.02275.01	EXHAUST MANIFOLD	1
003	20.02020.00	FLANGE	1
004	604.08070.86	BOLT DIN931 M8x70	3
005	104.08000.00	WASHER DIN7980 Ø8	3
006	101.08000.66	WASHER DIN125 Ø8	3
007	935.47051.66	HOSE CLAMP SUPER Ø47-51	1
008	604.09035.86	BOLT DIN931 M9x35	4
009	104.09000.00	WASHER DIN7980 Ø9	8
010	701.09000.66	NUT DIN934 M9x1,25	4