



FOREWORD

This manual contains service, maintenance, and troubleshooting information for the 2012 Arctic Cat DVX 90/90 Utility ATV. The manual is designed to aid service personnel in service-oriented applications and may be used as a textbook for service training.

This manual is divided into sections. Each section covers a specific ATV component or system and, in addition to the standard service procedures, includes disassembling, inspecting, and assembling instructions. When using this manual as a guide, the technician should use discretion as to how much disassembly is needed to correct any given condition. A troubleshooting section is also included in this manual.

The service technician should become familiar with the operation and construction of each component or system by carefully studying this manual. This manual will assist the service technician in becoming more aware of and efficient with servicing procedures. Such efficiency not only helps build consumer confidence but also saves time and labor.

All Arctic Cat ATV publications and decals display the words Warning, Caution, Note, and At This Point to emphasize important information. The symbol  **WARNING** identifies personal safety-related information. Be sure to follow the directive because it deals with the possibility of severe personal injury or even death. A **CAUTION** identifies unsafe practices which may result in ATV-related damage. Follow the directive because it deals with the possibility of damaging part or parts of the ATV. The symbol  **NOTE:** identifies supplementary information worthy of particular attention. The symbol  **AT THIS POINT** directs the technician to certain and specific procedures to promote efficiency and to improve clarity.

At the time of publication, all information, photographs, and illustrations were technically correct. Some photographs used in this manual are used for clarity purposes only and are not designed to depict actual conditions. Because Arctic Cat Inc. constantly refines and improves its products, no retroactive obligation is incurred.

All materials and specifications are subject to change without notice.

Keep this manual accessible in the shop area for reference.

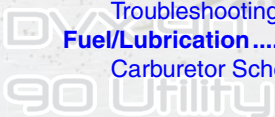
**Product Service and
Warranty Department
Arctic Cat Inc.**

2012 SERVICE MANUAL

TABLE OF CONTENTS

Note: To navigate through this manual, use the PAGE UP/PAGE DOWN buttons on the keyboard, click on the Table of Contents bookmarks on the left side of the screen, or click the blue text below. To return to this page, click the Manual Table of Contents button at the bottom of each page.

General Information	2	Carburetor	45
Specifications	2	Throttle Cable Free-Play	49
Torque Specifications.....	3	Engine RPM (Idle)	49
Torque Conversions (ft-lb/N-m).....	3	Gas Tank	50
Break-In Procedure	3	Gas Tank Valve	51
Gasoline-Oil-Lubricant	4	Gas/Vent Hoses	52
Genuine Parts.....	4	Oil Pump Assembly	52
Preparation For Storage	4	Oil Screen/Filter	52
Preparation After Storage	5	Troubleshooting	52
Periodic Maintenance/Tune-Up	6	Electrical System	53
Periodic Maintenance Chart	6	Battery	53
Air Filter	7	Testing Electrical Components	54
Valve/Tappet Clearance	7	Timing Sensor	54
Testing Engine Compression	8	CDI/Ignition Coil	54
Spark Plug	9	Stator Coil	54
Muffler/Spark Arrester	9	Choke Circuit.....	55
Transmission Lubricant	9	Brakelight Switch.....	55
Engine Oil	10	Fuse	55
Headlights.....	11	Ignition Coil	55
Brakelight/Taillight.....	11	Ignition Switch	56
Brake Systems.....	12	Handlebar Control Switches.....	56
Replacing Drive Belt	14	Magneto Assembly	56
Adjusting Shift Linkage	15	Starter Motor	57
Troubleshooting Brake System	15	Regulator/Rectifier	57
Engine/Transmission	16	Ignition Timing	57
Removing Engine/Transmission	16	Headlights	57
Top-Side Components	17	Troubleshooting	57
Removing Top-Side Components	18	Drive System	59
Servicing Top-Side Components	20	Drive Chain/Sprockets.....	59
Installing Top-Side Components	25	Rear Hub/Drive Axle.....	61
Left-Side Components	28	Front Hub	64
Removing Left-Side Components	28	Brake Systems	65
Installing Left-Side Components	30	Troubleshooting	66
Right-Side Components	31	Suspension	67
Removing Right-Side Components	32	Shock Absorbers	67
Servicing Right-Side Components.....	35	A-Arm	68
Installing Right-Side Components	36	Swing Arm	70
Center Crankcase Components	38	Wheels and Tires	72
Disassembling Crankcase Halves	38	Troubleshooting	74
Servicing Crankcase Components	39	Steering/Frame/Controls	75
Assembling Crankcase Half.....	40	Steering Post/Handlebar/Tie Rods.....	75
Installing Engine/Transmission	41	Handlebar Grip	78
Troubleshooting	43	Handlebar Switch	78
Fuel/Lubrication	45	Hand Brake Lever Assemblies	79
Carburetor Schematic.....	45	Troubleshooting	82



General Information

■NOTE: Some photographs and illustrations used in this section are used for clarity purposes only and are not designed to depict actual conditions.

Specifications

CHASSIS	
Length (Overall)	146.8 cm (57.8 in.)
Height (Overall)	96.2 cm (37.9 in.)
Width (Overall)	87.6 cm (34.5 in.)
Suspension Travel	(Front) 71.00 mm (2.8 in.) (Rear) 73.66 mm (2.9 in.)
Tire Size	(Front) AT20 x 7-8 (Rear) AT19 x 8-8
Tire Inflation Pressure	0.21 kg-cm ² (3.0 psi)
MISCELLANY	
Spark Plug Type	CR7HSA
Spark Plug Gap	0.6-0.7 mm (0.024-0.028 in.)
Dry Weight (Approx)	118 kg (260 lb) - DVX 120.2 kg (265 lb) - Utility
Gas Tank Capacity	5.7 L (1.5 U.S. gal.)
Reserve Capacity	1.3 L (0.34 U.S. gal.)
Transmission Lubricant (Recommended)	SAE 80W-90 Hypoid
Transmission Lubricant Capacity	250 ml (8.4 fl oz)
Engine Oil Capacity	0.8 L (0.84 U.S. qt)
Gasoline (Recommended)	87 Octane Regular Unleaded
Engine Oil (Recommended)	Arctic Cat ACX All Weather (Synthetic)
Brake Type	Front Double Drum/Rear Hydraulic Disc w/Brake Lever Locks
Headlight	12V/35W
Brakelight	12V/5W
Starting System	Electric w/Kick Start (Emergency)
FUEL SYSTEM	
Carburetor Type	Keihin PTE
Main Jet	80
Slow Jet	40
Pilot Screw Setting (turns)	1 3/8
Needle Jet	3.4/2.5
Jet Needle	NGRA-3
Idle RPM	1700
Needle Valve/Seat	1.6
Float Arm Height	10.2 mm (0.40 in.)
Throttle Cable Free-Play (at lever)	6.0 mm (0.25 in.)
IGNITION	
Ignition Timing	28° BTDC ("F" Mark) @ 4000 RPM
Ignition Type	CDI
Spark Plug Cap	4725-5775 ohms
Ignition Coil Resistance	(primary) Less than 1 ohm (terminal to terminal) (secondary) 2830-3170 ohms (high tension - plug cap removed - to ground)

MAGNETO		
Timing Sensor	(peak voltage) (resistance)	1.8-3.8 DC volts (blue/yellow to ground) 80-160 ohms (blue/yellow to ground)
Regulator/Rectifier		12.1-15.2 DC volts @ 3000 RPM (white to black)
CDI/Ignition Coil	(peak voltage)	190-282 DC volts (black/yellow to green)
Stator Coil	(no load)	13.5-16.5 AC volts @ 3000 RPM (yellow to white)
Stator Coil Resistance		Less than 1 ohm (yellow to white)
Choke Circuit	(voltage)	3.5-4.5 AC volts (yellow to green/black)
ENGINE		
Piston Ring End Gap (Installed)	(top) (2nd) (oil)	0.15-0.30 mm 0.30-0.45 mm 0.20-0.70 mm
Piston Pin Outside Diameter (Min)		12.96 mm
Piston Pin Bore (Max)		13.03 mm
Piston Skirt/Cylinder Clearance (Max)		0.10 mm
Cylinder Head Distortion (Max)		0.05 mm
Cylinder Bore Trueness		50.00-50.05 mm
Connecting Rod (Small End Inside Diameter) (Max)		13.06 mm
Connecting Rod (Small End Deflection) (Max)		0.40 mm
Connecting Rod/Crankshaft Clearance (Side to Side) (Max)		0.05 mm
Crankshaft (Runout) (Max)		0.10 mm
Camshaft Lobe Height (Intake) (Min)		26.33 mm
Camshaft Lobe Height (Exhaust) (Min)		25.65 mm
Rocker Arm to Shaft Clearance (Max)		0.10 mm
Intake Valve Stem to Guide Clearance (Max)		0.06 mm
Exhaust Valve Stem to Guide Clearance (Max)		0.08 mm
Valve Stem Runout		0.02 mm
Valve Face/Seat Width		0.63 mm
Valve Face Radial Runout		0.025 mm
Crankshaft Web-to-Web Distance		45.15-45.20 mm
Oil Pump Outer Rotor to Body Clearance (Max)		0.25 mm
Oil Pump Outer to Inner Rotor Clearance (Max)		0.20 mm
Oil Pump Rotor End Clearance (Max)		0.12 mm
V-Belt Width (Min)		16.5 mm
Centrifugal Clutch Housing (Max)		107.5 mm
Centrifugal Clutch Lining Thickness (Min)		1.0 mm
Driven Pulley Spring Free Length (Min)		154.6 mm
Roller Guide Diameter (Min)		15.4 mm
Movable Drive Face Collar (Max)		24.06 mm

Specifications subject to change without notice.

Torque Specifications

EXHAUST COMPONENTS		
Part	Part Bolted To	Torque ft-lb
Exhaust Pipe	Cylinder Head	7
Muffler	Frame	32
BRAKE SYSTEM COMPONENTS		
Brake Banjo-Fitting	Caliper	25
Brakeline Hose	Master Cylinder	20
Rear Brake Caliper	Rear Axle Housing	22
ELECTRICAL COMPONENTS		
Stator*	Stator Plate	8
STEERING COMPONENTS		
Wheel	Front/Rear Hub	30
Front Wheel Hub	Spindle Axle	45
Handlebar Cap	Lower Clamp	10
Steering Post Outer Bearing Cap	Inner Bearing Clamp	20
Steering Post	Frame	51
Tie Rod End	Steering Post	20
SUSPENSION COMPONENTS		
Front Shock Absorber	Frame/A-Arm	29
Rear Shock Absorber	Frame/Swing Arm	29
Swing Arm	Frame	50
Swing Arm	Rear Axle Housing	29
A-Arm	Frame	29
Knuckle	A-Arm	29
Tie Rod End	Knuckle	25
ENGINE COMPONENTS		
Oil Drain Plug	Crankcase	18
Spark Plug	Cylinder Head	9
Cylinder Head (Nut)	Cylinder	15
Crankcase Half*	Crankcase Half	8
Flywheel*	Crankshaft	30
Camshaft Holder	Cylinder	15
Stationary Drive Sheave*	Crankshaft	27.5
Centrifugal Clutch Housing*	Driven Pulley/Centrifugal Clutch	40
Oil Pump	Crankcase	7
Oil Pump Gear	Oil Pump	7
Oil Screen/Filter Cap	Crankcase	10
Cam Chain Tensioner	Cylinder	7
Transmission Drain Plug	Transmission	18
Cylinder Head (Cap Screw)	Crankcase	7
Valve Cover	Cylinder Head	7
Spline-Lock	Drive Sprocket	8
Engine Mount	Engine/Frame	32.5
Intake Pipe	Cylinder Head	7
DRIVE TRAIN COMPONENTS		
Rear Hub	Rear Axle Shaft	58
Rear Axle Nut (Inner/Outer)*	Rear Axle	86
V-Belt Cover	Crankcase	7
Transmission Case Cover	Transmission	22
Rear Sprocket	Sprocket Retainer	20

* w/Red Loctite #271

Torque Conversions (ft-lb/N-m)

ft-lb	N-m	ft-lb	N-m	ft-lb	N-m	ft-lb	N-m
1	1.4	26	35.4	51	69.4	76	103.4
2	2.7	27	36.7	52	70.7	77	104.7
3	4.1	28	38.1	53	72.1	78	106.1
4	5.4	29	39.4	54	73.4	79	107.4
5	6.8	30	40.8	55	74.8	80	108.8
6	8.2	31	42.2	56	76.2	81	110.2
7	9.5	32	43.5	57	77.5	82	111.5
8	10.9	33	44.9	58	78.9	83	112.9
9	12.2	34	46.2	59	80.2	84	114.2
10	13.6	35	47.6	60	81.6	85	115.6
11	15	36	49	61	83	86	117
12	16.3	37	50.3	62	84.3	87	118.3
13	17.7	38	51.7	63	85.7	88	119.7
14	19	39	53	64	87	89	121
15	20.4	40	54.4	65	88.4	90	122.4
16	21.8	41	55.8	66	89.8	91	123.8
17	23.1	42	57.1	67	91.1	92	125.1
18	24.5	43	58.5	68	92.5	93	126.5
19	25.8	44	59.8	69	93.8	94	127.8
20	27.2	45	61.2	70	95.2	95	129.2
21	28.6	46	62.6	71	96.6	96	130.6
22	29.9	47	63.9	72	97.9	97	131.9
23	31.3	48	65.3	73	99.3	98	133.3
24	32.6	49	66.6	74	100.6	99	134.6
25	34	50	68	75	102	100	136

Break-In Procedure

A new ATV and an overhauled ATV engine require a “break-in” period. The first month is most critical to the life of this ATV. Proper operation during this break-in period will help assure maximum life and performance from the ATV.

During the first three hours of operation, always use less than 1/2 throttle. Varying the engine RPM during the break-in period allows the components to “load” (aiding the mating process) and then “unload” (allowing components to cool). Although it is essential to place some stress on the engine components during break-in, care should be taken not to overload the engine too often.

When the engine starts, allow it to warm up properly. Idle the engine several minutes until the engine has reached normal operating temperature. Do not idle the engine for excessively long periods of time.

After the completion of the break-in period, the engine lubricant should be changed. Other maintenance after break-in should include checking of all prescribed adjustments and tightening of all fasteners.

Gasoline-Oil-Lubricant

RECOMMENDED GASOLINE

The recommended gasoline to use is 87 minimum octane regular unleaded. In many areas, oxygenates (either ethanol or MTBE) are added to the gasoline. Oxygenated gasolines containing up to 10% ethanol, 5% methane, or MTBE are acceptable gasolines.

CAUTION

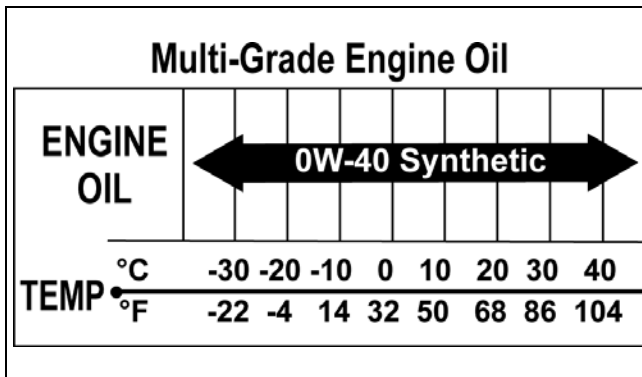
Do not use white gas. Only Arctic Cat approved gasoline additives should be used.

RECOMMENDED ENGINE OIL

CAUTION

Any oil used in place of the recommended oil could cause serious engine damage. Do not use oils which contain graphite or molybdenum additives. These oils can adversely affect clutch operation. Also, not recommended are racing, vegetable, non-detergent, and castor-based oils.

The recommended oil to use is Arctic Cat ACX All Weather synthetic engine oil, which has been specifically formulated for use in this Arctic Cat engine. Although Arctic Cat ACX All Weather synthetic engine oil is the only oil recommended for use in this engine, use of any API certified SM 0W-40 oil is acceptable.



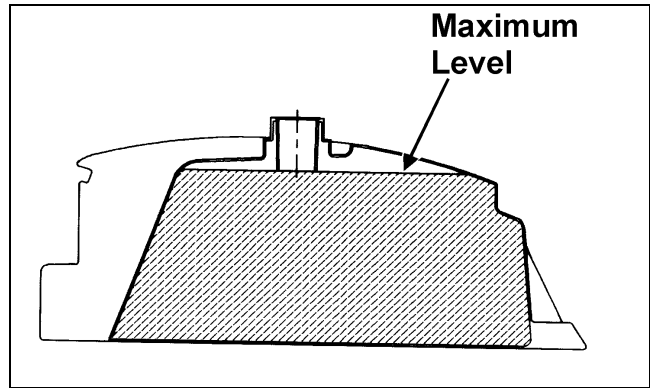
RECOMMENDED TRANSMISSION LUBRICANT

The recommended lubricant is Arctic Cat Gear Lube or an equivalent gear lube which is SAE approved 80W-90 hypoid. This lubricant meets all the lubrication requirements of the Arctic Cat ATV front differential and rear drive.

FILLING GAS TANK

⚠ WARNING

Always fill the gas tank in a well-ventilated area. Never add gasoline to the ATV gas tank near any open flames or with the engine running or hot. DO NOT SMOKE while filling the gas tank.



ATV0049B

Since gasoline expands as its temperature rises, the gas tank must be filled to its rated capacity only. Expansion room must be maintained in the tank particularly if the tank is filled with cold gasoline and then moved to a warm area.

⚠ WARNING

Do not over-fill or overflow gasoline when filling the gas tank. A fire hazard could materialize. Always allow the engine to cool before filling the gas tank.

Tighten the gas tank cap securely after filling the tank.

Genuine Parts

When replacement of parts is necessary, use only genuine Arctic Cat ATV parts. They are precision-made to ensure high quality and correct fit. Refer to the appropriate Illustrated Parts Manual for the correct part number, quantity, and description.

Preparation For Storage

CAUTION

Prior to storing the ATV, it must be properly serviced to prevent rusting and component deterioration.

Arctic Cat recommends the following procedure to prepare the ATV for storage.

1. Clean the seat cushion (cover and base) with a damp cloth and allow to dry.
2. Clean the ATV thoroughly by washing dirt, oil, grass, and other foreign matter from the entire ATV. Allow the ATV to dry thoroughly. DO NOT get water into any part of the engine or air intake.
3. Either drain the gas tank or add Fuel Stabilizer to the gas in the gas tank. Remove the air filter housing cover and air filter. Start the engine and allow it to idle; then using Arctic Cat Engine Preserver, rapidly inject the preserver into the air filter opening for a period of 10 to 20 seconds. Install the air filter and housing cover.

CAUTION

If the interior of the air filter housing is dirty, clean the area before starting the engine.

4. Drain the carburetor float chamber.
5. Plug the hole in the exhaust system with a clean cloth.
6. Apply light oil to the upper steering post bushing and plungers of the shock absorbers.
7. Tighten all nuts, bolts, cap screws, and screws. Make sure rivets holding components together are tight. Replace all loose rivets. Care must be taken that all calibrated nuts, cap screws, and bolts are tightened to specifications.
8. Disconnect the battery cables (negative cable first); then remove the battery, clean the battery posts and cables, and store in a clean, dry area.

CAUTION

This maintenance-free battery should be charged at the recommended rate every 30 days or permanent damage will result if the battery completely discharges.

9. Store the ATV indoors in a level position.

CAUTION

Avoid storing outside in direct sunlight and avoid using a plastic cover as moisture will collect on the ATV causing rusting.

Preparation After Storage

Taking the ATV out of storage and correctly preparing it will assure many miles and hours of trouble-free riding. Arctic Cat recommends the following procedure to prepare the ATV.

1. Clean the ATV thoroughly.
2. Clean the engine.
3. Remove the cloth from the exhaust system.
4. Check all control wires and cables for signs of wear or fraying. Replace if necessary.
5. Change the transmission lubricant.
6. Charge the battery; then install. Connect the battery cables making sure to connect the positive cable first.
7. Check the entire brake system (cables, shoes, etc.), and all controls. Adjust or replace if necessary.
8. Check the tire pressure. Inflate to recommended pressure as necessary.
9. Tighten all nuts, bolts, cap screws, and screws making sure all calibrated nuts, cap screws, and bolts are tightened to specifications.
10. Make sure the steering moves freely and does not bind.
11. Check the spark plug. Clean or replace as necessary.

Periodic Maintenance/ Tune-Up

Tighten all nuts, bolts, and cap screws. Make sure rivets holding components together are tight. Replace all loose rivets. Care must be taken that all calibrated nuts, bolts, and cap screws are tightened to specifications.

It is advisable to lubricate certain components periodically to ensure free movement. Apply light oil to the components using the following list as reference.

- A. Throttle Lever Pivot/Cable Ends
- B. Brake Lever Pivot/Cable Ends
- C. Idle RPM Adjustment Screw

Periodic Maintenance Chart

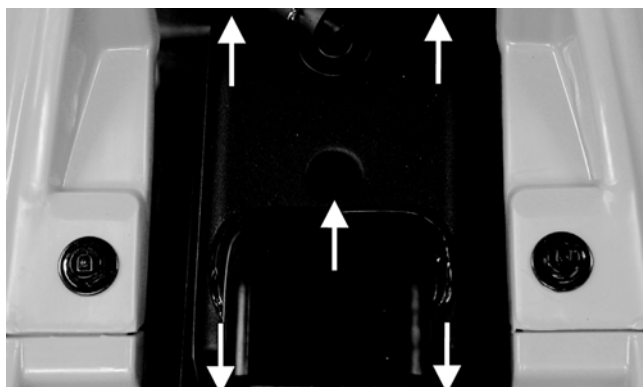
A = Adjust I = Inspect
 C = Clean L = Lubricate
 CH = Charge R = Replace
 D = Drain T = Tighten

Item	Initial Service After Break-In (First Mo)	Every Day	Every Month	Every 3 Months	Every 6 Months	Every Year	As Needed
Battery	I		CH			I	C
Fuse				I			R
Air Filter	I		C*				R
Engine Compression						I	
Spark Plug				I/C			R (18 Mo)
Chassis				C*/L*		I	
Gas/Vent Hoses		I					C, R (2 Years)
Gas Tank Valve						I	C
Throttle Cable	I	I			C/L		A, R
Carburetor	I			D*		D*	
Engine RPM (Idle)	I					I	I/A
Engine Oil	R	I		R			
Valve/Tappet Clearance	A					A	
Transmission Lubricant/Level	R						I
Fuel Filter	I			I			R
Tires/Air Pressure/Wear	I	I					I/R
Steering Components	I	I					R
Drive Chain	I			C*/L*			R
Suspension (Tie Rods, Protective Boots)	I	I					R
Nuts/Bolts/Cap Screws	I		I/T				T
Ignition Timing							I
Brakelight	I	I					R
Switches		I					R
Kick Starter		I					C
Handlebar/Grips		I					R
Frame/Welds			I				
Electrical Connections	I					I	C
Complete Brake Systems	I	I		C*			L, R
Brake Fluid	I		I				R (2 Years)
Shock Absorbers			I				R

*Service/Inspect more frequently when operating in adverse conditions.

Air Filter

1. Remove the seat; then remove five screws securing the air filter housing cover.



KM032A

2. Remove the air filter housing cover; then pull the filter out of the housing.
3. Fill a wash pan larger than the element with a non-flammable cleaning solvent; then dip the element in the solvent and wash it.

■NOTE: Foam Filter Cleaner and Foam Filter Oil are available from Arctic Cat.

4. Compress the element by pressing it between the palms of both hands to remove excess solvent. Do not twist or wring the element or it will develop cracks.
5. Dry the element.
6. Put the element in a plastic bag; then pour in air filter oil and work the oil into the element.
7. Compress the element to remove excess oil.

CAUTION

A torn air filter can cause damage to the ATV engine. Dirt and dust may get inside the engine if the element is torn. Carefully examine the element for tears before and after cleaning it. Replace the element with a new one if it is torn.

8. Clean any dirt or debris from inside the air cleaner. Make sure no dirt enters the carburetor.
9. Install the air filter. Install air filter housing cover and secure with the five screws.

Valve/Tappet Clearance

To check and adjust valve/tappet clearance, use the following procedure.

■NOTE: Valve/tappet clearance specifications are for room temperature (approximately 68° F).

1. Remove the two cap screws and the two self-tapping screws securing the fan shroud; then remove the fan shroud.

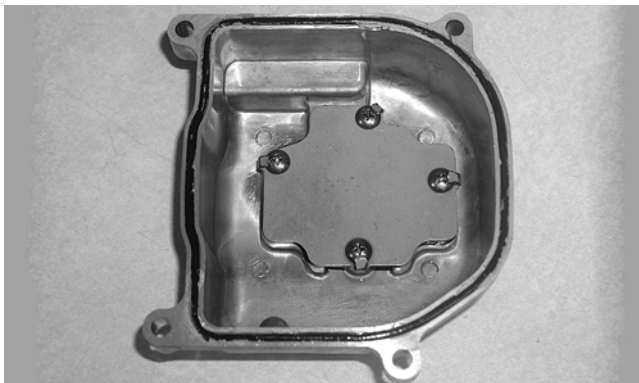


CD651

2. Remove the breather tube from the valve cover; then remove the four cap screws and remove the valve cover. Account for the O-ring seal and the valve cover.



CD654



CD655

3. Remove the spark plug wire and the spark plug; then rotate the engine clockwise to the TDC position on the compression stroke.

■NOTE: The "T" mark on the rotor/flywheel is aligned with the timing pointer on the crankcase, and intake and exhaust valve adjuster screws must not have pressure on them. The two punch marks on the camshaft gear are aligned with the valve cover surface, and the hole in the timing gear points away from the engine.