



PARTS CATALOG

TRACTORS

Model 710C

Loader 3-Point Hitch

Model 714C

Backhoe - Loader

Model 715C

Backhoe - Loader

FOREWORD**ALPHABETICAL INDEX**

The complete alphabetical index appears at the beginning of this publication. It is used to locate major groups, assemblies and components.

NUMERICAL INDEX

The numerical index of this publication follows the Alphabetical Index at the beginning of the publication and indicates at which grid location and page number a part number appears.

ILLUSTRATIONS

All illustrations are located on the left hand page with the text on the right. Except for some common hardware, all parts are identified with an item number which corresponds to the "item" column on the text page. This is followed by the part number, quantity and description.

HARDWARE

Common hardware not identified such as bolts, nuts, cotter pins and lube fittings, are listed indented in the text beneath the item to which they attach or fit. Common hardware listed indented beneath an item is NOT included unless specified. Example: (Incl. BOLT, LOCKWASHER AND NUT).

ORDERING PARTS

Be sure to refer to both the text and the illustration to assure ordering the correct part.

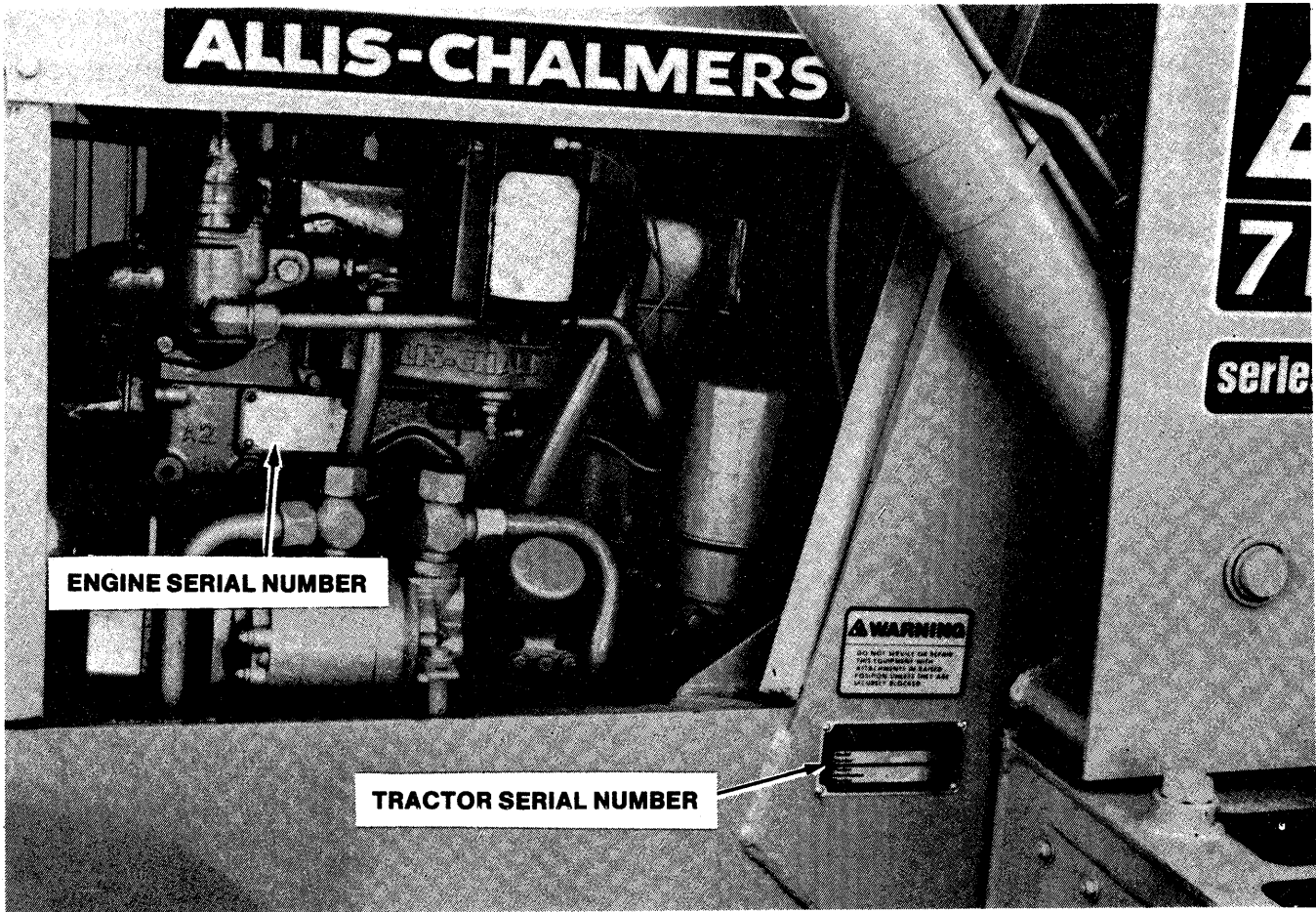
RECOMMENDED DEALER STOCK

A recommended dealer stock listing appears at the end of this publication.

CONTINENTAL DIVERSIFIED SALES, INC.

900 Sixth Avenue Southeast
Minneapolis, Minnesota 55414

SERIAL NUMBER LOCATION



AIR INTAKE & EXHAUST SYSTEM	
Air Cleaner Asy.	53
Air Cleaner Group	53
Manifolds	
Exhaust	47
Intake	47
Muffler	55
Turbocharger	49
Lines	51
ATTACHMENTS	
Backup Alarm	269
Boom Lockout Valve	275
Buckets	
Backhoe	243
Loader	245
Counterweight Installation	
Front	263
Front - For Extendable Dipperstick	247
Cylinder Asy. - Drawbar	267
Drawbar Lift - 710C Loader	265
License Plate	271
Mast - Drawbar Lift	265
Power Take-Off	
710C Loader W/ 3-Point Hitch	257
Rear Counterweight - 710C Loader	249
Return to Dig	251
Rotating Beacon	273
Spool Release Positioner	253
Stabilizer Lock Valves	259
Tachometer	261
Valve Asy. - Boom Lockout Valve	277
Vandalism Protection	255
AXLE, STEERING & WHEELS	
Axles (Refer to DRIVE TRAIN)	
Cylinder, Power Steering	151, 153, 155
Front Axle	153
Mounting	153
Power Steering	151
Steering Column Asy.	151
Tie Rod Asy.	155
Tires & Wheel - Rear	149
Valve, Steering	149, 157
Wheel Asy., Front	153
BACKHOE	
Backhoe Controls	219
Boom & Hydraulics	215
Cylinder Asy. (Refer to HYDRAULICS Section)	
Dipperstick & Hydraulics	217
Extendable Dipperstick	221
Stabilizer Pad & Stabilizer Cylinder	211
Stabilizer Street Pad	211
Swing Frame & Cylinders	213
Valve Asy. (Refer to HYDRAULICS Section)	
CAB	
Cab	227
Doors	229
Defroster Fan	237
Heater	233
Heater Asy.	235
Rear Window Wiper	239
Windshield Wiper & Motor	231

INDEX

COOLING SYSTEM	
Filter	63
Oil Cooler, Transmission	63
Pump, Water	57
Blade Asy., Fan	57
Hub, Pulley	57
Radiator	61
Thermostat	59
DRIVE TRAIN	
Axle Asy.	133
Brake Parts	139
Differential Asy., Rear Axle	135
Differential Lock Linkage	139
Housing, Rear Drive	133
Housing & Brake Asy., Rear Axle	137
Brake Pedal & Linkage	147
Clutch Pedal & Linkage	145
Controls, Forward & Reverse	143
Controls Parking Brake	131
Differential Lock	141
Main Drive Shaft	131
Mounting, Engine & Transmission	113
Torque Converter	115
Transmission Asy., Forward & Reverse	115
Case - 4-Speed	125
Control Cover - 4-Speed	129
Countershaft - 4-Speed	129
Drive Gear & Forward Clutch	121
Front Pump & Reverse Clutch	123
Housing, Pinion Cage & Output Shaft	117
Main Shaft - 4-Speed	127
ELECTRICAL & INSTRUMENTS	
Alternator Asy.	89, 95, 97
Electrical Group	89
Battery Box	89
Fan, Alternator	89
Horn	89
Pulley, Alternator	89
Sending Units	89
Switches	
Hourmeter	89
Oil Pressure	89
Wiring & Battery	89
Instrument Panel	91
Fuse & Fuse Block	91
Gauges	
Fuel	91
Oil Temperature	91
Water Temperature	91
Hourmeter	91
Switches	
Horn	91
Key	91
Stop Light	91
Turn Signal	91
Lamp Asy.	
Warning Lamp	99
Starting Motor Asy.	89, 93

ENGINE	
Adapter	25
Dipstick	31
Flywheel	35
Camshaft	25
Bearings	33
Connecting Rod	33
Bearings	25, 29
Crankshaft	25
Bearings	25
Cylinder Block	27
Cylinder Head	25, 33
Cylinder Sleeve Kit	31
Flywheel & Adapter Plate	21
Gasket Sets	21
Complete	21
Cylinder Head	23
Intermediate	21
Oil Pan	25
Heater, Coolant	45
Hydraulic Pump Drive	37
Idler Gear	43
Lubricating system	41
Oil Cooler & Filter	39
Oil Pan	33
Oil Pump & Balancer	35
Piston	25
Push Rods	35
Replacement	25
Short Block	35
Rocker Arm	37
Timing Gear	37
Brake, Alternator	37
Cover	35
Valve Operating Mechanism	27
Intake & Exhaust	35
Spring	
FUEL SYSTEM	
Controls	87
Ether Starting System	83
Fuel Injection System	81
Electric Shut-off	77
Fuel Filter & Lines	75
Fuel Injector	77
Hand Primer Pump	73
Lines	67
Pump	69
Advance	65
Governor	67
Housing & Drive	71
Linkage	69
Hydraulic Head & Rotor	79
Transfer	85
Water Separator	
Tank & Lines	

INDEX

HITCH	
Hydraulics (Refer to HYDRAULIC SYSTEM)	
3-Point Hitch - 710C Loader	241
HYDRAULICS	
Auxiliary Hydraulics	
Backhoe	205
Extendable Dipperstick	207
Loader	209
Backhoe	
Control Valves	
Backhoe	159, 161, 167, 171, 183
Swing	159, 161, 169, 173
Cylinders	
Boom	177, 205
Bucket	179, 207
Dipperstick	177, 207
Extension	203
Stabilizer	179, 201
Swing	181, 203
Valve & Lines	
Backhoe	167
Swing	169
Filter Asy.	161
Hydraulic Group	
3-Point Hitch 710C Loader	191, 193
Loader	
Control Valve	159, 161, 187, 195
Cylinders	
Lift	183, 189, 197
Tilt	185, 189, 199
Pitch	201
Valve & Lines	
Lift	183
Tilt	185
Pressure Lines	159
Priority Valve	159, 175
Pump Asy., Implement	159, 161, 165
Reservoir	161, 163
Suction & Return Lines	161
LOADER	
Controls	225
Lift Arms	223
Linkage & Cylinders	223
NUMERICAL INDEX	9
RECOMMENDED DEALER STOCK LIST	278
SHEET METAL, FRAME & SEAT	
Decals	109
Fenders	107
Hood & Grille	105
Main Frame, Tractor	107
Platform	103
Rear Axle Mounting	107
Rollover Structure	
Canopy & Lights	111
Seat & Seat Support	101

NUMERICAL INDEX

Part	Page	Grid	Part	Page	Grid	Part	Page	Grid	Part	Page	Grid
4023014-6	23	1-A24	4027979-6	43	1-B20	4054583-2	67	1-C20	4062190-6	81	1-D10
4023014-6	57	1-C10	4028888-8	39	1-B16	4054585-7	67	1-C20	4062204-5	67	1-C20
4023015-3	57	1-C10	4028945-6	77	1-D 6	4054586-5	67	1-C20	4062237-5	71	1-C24
4023052-6	45	1-B22	4029238-5	51	1-C 4	4054589-9	67	1-C20	4062238-3	65	1-C18
4023378-5	27	1-B 4	4029319-3	57	1-C10	4054594-9	67	1-C20	4062239-1	65	1-C18
4023380-1	27	1-B 4	4035186-8	27	1-B 4	4054799-4	89	1-D18	4062240-9	65	1-C18
4023382-7	27	1-B 4	4035329-4	59	1-C12	4054799-4	95	1-D24	4062240-9	81	1-D10
4023455-1	25	1-B 2	4035388-0	27	1-B 4	4054799-4	97	1-E 2	4062241-7	65	1-C18
4023459-3	21	1-A22	4035389-8	27	1-B 4	4054848-9	95	1-D24	4062242-5	65	1-C18
4023459-3	39	1-B16	4035389-8	35	1-B12	4054848-9	97	1-E 2	4062243-3	65	1-C18
4023508-7	25	1-B 2	4035530-7	31	1-B 8	4055087-3	67	1-C20	4062244-1	65	1-C18
4023556-6	77	1-D 6	4035849-1	57	1-C10	4055689-6	67	1-C20	4062245-8	65	1-C18
4023567-3	23	1-A24	4036098-4	77	1-D 6	4055869-4	93	1-D22	4062246-6	65	1-C18
4023567-3	37	1-B14	4036305-3	45	1-B22	4055958-5	69	1-C22	4062249-0	71	1-C24
4023622-6	39	1-B16	4036540-5	77	1-D 6	4055960-1	69	1-C22	4062250-8	71	1-C24
4023721-6	77	1-D 6	4036540-5	79	1-D 8	4056461-9	71	1-C24	4062251-6	71	1-C24
4023721-6	79	1-D 8	4036545-4	51	1-C 4	4056484-1	67	1-C20	4062253-2	67	1-C20
4023754-7	39	1-B16	4048597-1	65	1-C18	4056486-6	67	1-C20	4062255-7	69	1-C22
4023818-0	45	1-B22	4048598-9	65	1-C18	4056488-2	67	1-C20	4062256-5	67	1-C20
4023827-1	25	1-B 2	4048600-3	65	1-C18	4056590-5	71	1-C24	4062257-3	69	1-C22
4023827-1	33	1-B10	4048603-7	65	1-C18	4056799-2	67	1-C20	4062259-9	69	1-C22
4023857-8	37	1-B14	4048604-5	65	1-C18	4059064-8	67	1-C20	4062260-7	69	1-C22
4023858-6	37	1-B14	4048620-1	69	1-C22	4059170-3	67	1-C20	4062263-1	67	1-C20
4023859-4	23	1-A24	4048624-3	67	1-C20	4059171-1	67	1-C20	4062288-8	69	1-C22
4023859-4	37	1-B14	4048627-6	69	1-C22	4059256-0	53	1-C 6	4062308-4	97	1-E 2
4023887-5	25	1-B 2	4048630-0	65	1-C18	4059396-4	67	1-C20	4062497-5	69	1-C22
4023889-1	25	1-B 2	4048630-0	81	1-D10	4059397-2	67	1-C20	4062639-2	65	1-C18
4023913-9	27	1-B 4	4048635-9	69	1-C22	4059509-2	67	1-C20	4062640-0	65	1-C18
4023970-9	33	1-B10	4048636-7	69	1-C22	4059575-3	69	1-C22	4062641-8	65	1-C18
4023972-5	39	1-B16	4048642-5	69	1-C22	4059611-6	65	1-C18	4062642-6	65	1-C18
4023979-0	29	1-B 6	4048645-8	67	1-C20	4059620-7	77	1-D 6	4062645-9	67	1-C20
4024001-2	21	1-A22	4048649-0	77	1-D 6	4059678-5	71	1-C24	4062651-7	69	1-C22
4024001-2	39	1-B16	4048650-8	69	1-C22	4060065-2	67	1-C20	4062656-6	69	1-C22
4024090-5	27	1-B 4	4049437-9	81	1-D10	4060067-8	81	1-D10	4062664-0	75	1-D 4
4024229-9	77	1-D 6	4049532-7	67	1-C20	4060695-6	77	1-D 6	4062665-7	75	1-D 4
4024482-4	83	1-D12	4049533-5	69	1-C22	4060956-2	77	1-D 6	4062666-5	75	1-D 4
4024554-0	47	1-B24	4050068-8	93	1-D22	4061128-7	67	1-C20	4062667-3	75	1-D 4
4024561-5	21	1-A22	4050637-0	77	1-D 6	4061162-6	69	1-C22	4062759-8	49	1-C 2
4024561-5	37	1-B14	4050638-8	77	1-D 6	4061163-4	69	1-C22	4062789-5	49	1-C 2
4024562-3	21	1-A22	4050645-3	77	1-D 6	4061164-2	69	1-C22	4062799-4	49	1-C 2
4024562-3	31	1-B 8	4050646-1	77	1-D 6	4061165-9	69	1-C22	4062800-0	49	1-C 2
4024583-9	33	1-B10	4050910-1	69	1-C22	4061170-9	67	1-C20	4062801-8	49	1-C 2
4024599-5	23	1-A24	4050913-5	67	1-C20	4061172-5	69	1-C22	4062802-6	49	1-C 2
4025019-3	23	1-A24	4051365-7	71	1-C24	4061174-1	69	1-C22	4062809-1	75	1-D 4
4025019-3	25	1-B 2	4051372-3	71	1-C24	4061192-3	65	1-C18	4062841-4	81	1-D10
4025021-9	23	1-A24	4051378-0	69	1-C22	4061195-6	71	1-C24	4063329-9	75	1-D 4
4025021-9	25	1-B 2	4051379-8	71	1-C24	4061204-6	65	1-C18	4153776-2	27	1-B 4
4025025-0	25	1-B 2	4051383-0	81	1-D10	4061205-3	81	1-D10	4250616-2	153	1-G10
4025058-1	57	1-C10	4051388-9	71	1-C24	4061206-1	67	1-C20	4251113-9	135	1-F16
4025079-7	37	1-B14	4051409-3	67	1-C20	4061283-0	67	1-C20	4253059-2	33	1-B10
4025082-1	37	1-B14	4051412-7	67	1-C20	4061569-2	71	1-C24	4253433-9	69	1-C22
4025101-9	21	1-A22	4051413-5	67	1-C20	4061587-4	69	1-C22	4254452-8	25	1-B 2
4025101-9	59	1-C12	4051502-5	69	1-C22	4061588-2	69	1-C22	4254864-4	35	1-B12
4025103-5	59	1-C12	4051559-5	67	1-C20	4061611-2	69	1-C22	4254873-5	77	1-D 6
4025119-1	43	1-B20	4051815-1	67	1-C20	4061660-9	69	1-C22	4254873-5	79	1-D 8
4025120-9	23	1-A24	4052156-9	67	1-C20	4061661-7	69	1-C22	4255107-7	25	1-B 2
4025120-9	43	1-B20	4052538-8	71	1-C24	4061662-5	69	1-C22	4255110-1	25	1-B 2
4025188-6	35	1-B12	4052540-4	65	1-C18	4061663-3	69	1-C22	4255155-6	31	1-B 8
4025191-0	35	1-B12	4052915-8	69	1-C22	4061664-1	69	1-C22	4255492-3	25	1-B 2
4025193-6	35	1-B12	4052917-4	65	1-C18	4061665-8	69	1-C22	4255577-1	27	1-B 4
4025194-4	35	1-B12	4052917-4	67	1-C20	4061666-6	69	1-C22	4255820-5	153	1-G10
4025238-9	25	1-B 2	4053035-4	77	1-D 6	4061744-1	67	1-C20	4255930-2	27	1-B 4
4025250-4	65	1-C18	4053036-2	77	1-D 6	4061938-9	25	1-B 2	4255983-1	21	1-A22
4025258-7	25	1-B 2	4053037-0	77	1-D 6	4061938-9	33	1-B10	4255983-1	51	1-C 4
4025259-5	25	1-B 2	4053266-5	65	1-C18	4062156-7	33	1-B10	4322188-6	73	1-D 2
4025392-4	25	1-B 2	4053267-3	65	1-C18	4062157-5	33	1-B10	4322189-4	73	1-D 2
4025461-7	37	1-B14	4053362-2	71	1-C24	4062162-5	29	1-B 6	4322293-4	73	1-D 2
4025491-4	27	1-B 4	4053375-4	67	1-C20	4062163-3	29	1-B 6	4330051-6	45	1-B22
4026382-4	25	1-B 2	4053385-3	69	1-C22	4062164-1	29	1-B 6	4354571-4	39	1-B16
4026460-8	37	1-B14	4053451-3	71	1-C24	4062174-0	33	1-B10	4357289-0	45	1-B22
4026549-8	23	1-A24	4053589-0	69	1-C22	4062175-7	33	1-B10	4359776-4	79	1-D 8
4026549-8	37	1-B14	4053829-0	81	1-D10	4062176-5	33	1-B10	4362338-8	25	1-B 2
4026615-7	39	1-B16	4054579-0	69	1-C22	4062177-3	33	1-B10	4369436-3	71	1-C24
4026699-1	35	1-B12	4054582-4	65	1-C18	4062178-1	29	1-B 6	4369444-7	71	1-C24
4027975-4	51	1-C 4	4054583-2	65	1-C18	4062188-0	81	1-D10	4369595-6	67	1-C20

NUMERICAL INDEX

NUMERICAL INDEX