



PARTS CATALOG

I-60 & I-600 INDUSTRIAL TRACTORS

LITHO U.S.A.

FORM 1012420-4
Reprinted (11-75)
(Replaces Form D-81)

FOREWORD

This catalog contains complete parts information for Model I-60 and I-600 Industrial Tractors.

The parts listed in this catalog have been divided into groups. Included in each group are closely related parts. For example: The "Conveyor" group consists of all conveyor parts plus the parts which aid the conveyor in performing its function.

Except for some common hardware all parts are identified with an item number. Common hardware not identified such as bolts, nuts, cotter pins and lubrication fittings, are listed in the text under the part which they attach or fit into. Note particularly that the quantity of hardware listed is always the quantity required for one part.

Common attaching hardware listed under a part is not included in the assembly or included with the part unless specified. Example: (Incl. Bolt, Lockwasher and Nut).

The extreme right hand column in the parts list entitled "Assembly or Packaged Parts" indicates if an individual part is one of many in a large assembly or one of several kinds in a package. All numbers shown in the right hand column are listed numerically in the second last section of this catalog showing the quantity and description of the various parts that make up the assembly or package.

The last section of this catalog contains a part number index to indicate on which page or pages a part number appears.

All illustrations will be found to precede the text of each group or section of which it is a part.

Any changes or corrections for this catalog will appear on the regular supplement form.

For any additional copies of this catalog there will be a supplementing service charge of one dollar. Refer any requests to your Branch House or office under which you operate.

All Dealer Parts Catalogs remain the property of Allis-Chalmers Manufacturing Company, Milwaukee, Wisconsin.

* * *

INDEX

AIR CLEANER			
Diesel	57		
Gas	36		
AIR CLEANER HOSES			
Diesel	57		
Gas	36		
AIR CLEANER INDICATOR	206		
AIR HEATER			
Diesel	74		
AIR INTAKE & EXHAUST			
Diesel	56		
Gas	31		
ALPHABETICAL INDEX	2		
ASSEMBLIES & PACKAGED PARTS	208		
ATTACHMENTS			
Ether Starting Aid, diesel	205		
Hose Coupler Assembly	164		
Operator's Seat, padded (Optional)	141		
Three Point Hitch			
Beaming Tube	177		
Crank	157		
Draft Arm Stabilizer	181		
Drawbar, retractable	182		
Hitch Linkage, draft sensitive	179		
Housing	157		
Lift Arms	157		
Lift Shaft	177		
Linkage, draft sensitive	176		
Ram	159		
Ram, remote			
Double Acting	162		
Single Acting	161, 162		
Torsion Bar, draft sensitive	176		
Upper Link	177		
Tools	207		
Tool Box	137		
AXLE ASSEMBLY, rear	132		
Brake Assembly			
Drum	134		
Kit, brake shoe	134		
Plate, support	134		
Brake Controls			
Lever	135, 136		
Pedals	135		
Ratchet	135		
Rods	135, 136		
Shaft	136		
Differential	130		
Carrier	130		
Case	130		
Gear, side	130		
Kit	130		
Pinion, side	130		
AXLE ASSEMBLY, rear (Continued)			
Final Drive	132		
Axle, rear	133		
Gear, drive	133		
Housing	132		
Pan, housing	133		
Shaft, pinion	132		
CABLE, choke control	94		
CLUTCH			
Engine	103		
Disc, driven	103		
Gears			
Drive	107		
Drive, intermediate	108		
Driven	108		
Plates			
Back	103		
Pressure	103		
Rings, snap	107, 108		
Shaft	106		
Pedal	104		
Shifter	104		
COOLING SYSTEM			
Diesel			
Belt Set	75		
Blade Assembly, fan	76		
Hoses, radiator	84		
Impeller	75		
Pulley, pump	75		
Radiator	84		
Thermostat	60		
Water Inlet & Outlet Pipes & Hoses	59		
Water Pump	75		
Gas			
Belt, fan	39		
Blade Assembly, fan	39		
Hoses, radiator	84		
Impeller	39		
Pulley, pump	39		
Radiator	84		
Thermostat	38		
Water Manifold	38		
Water Pump	39		
DRIVE SHAFT, flexible	203		
Operation Meter	203		
ELECTRICAL GROUP			
Electric Lighting	97		
Diesel & Gas			
Harness, rear	97		
Lamp Assembly, head light	97		
Lamp Assembly, work tail light	97		
Electrical System	78		
Diesel			
Battery Box	78		
Battery Tray	92		
Battery, front 12 Volt	79		

INDEX

ELECTRICAL GROUP (Con't)

Battery, rear 12 Volt	78
Cable, front battery to solenoid	78
Cable, ground front battery	78
Cable, rear battery to solenoid	78
Cable, solenoid to heater switch	79
Cable, switch to heater	79
Fan, generator	79
Fuse, 20 amp	78
Generator Assembly	79, 80
Harness, front	78
Pulley, generator	79
Starting Motor Assembly	79, 82
Voltage Regulator	79

Electrical System 21

Gas

Battery Tray	92
Battery, 12 Volt	21
Cable, battery to solenoid	22
Fan, pulley	21
Generator Assembly	22, 23
Harness, front	22
Harness, voltage regulator	21
Pulley, generator	21
Regulator, voltage	22
Starting Motor Assembly	22, 26

Horn 201

Instruments & Panel 99

Diesel & Gas

Ammeter Assembly	99
Cable, ignition switch to ammeter	100
Cable, starter switch to ignition switch	100
Cover, instrument panel	99
Fuse, 20 amp	99
Gauge Assembly, oil pressure	99
Gauge Assembly, water temperature	99
Key, ignition switch	99
Lamp Assembly, dash	99
Meter, tach hour (Diesel)	100
Panel Assembly	99
Plate, instruction key switch	100
Switch Assembly, starting & heater	100
Switch, ignition & starter	99
Trim, panel	100

Warning Lamp 202

Warning Light Flasher 202

ENGINES

Diesel

Adaptor, splined hub	45
Bearings, connecting rod	44
Bearings, main	42, 43
Camshaft	46
Cover Assembly, cylinder head	49
Crankshaft	45
Cylinder Block	41
Cylinder Head & Valves	48
Flywheel & Ring Gear	54
Gauge, oil level	53
Gear, camshaft	46
Gear Cover	55
Gear, crankshaft	45

ENGINES (Diesel) (Continued)

Oil Filter	71
Oil Pan	53
Oil Pump	51
Piston & Connecting Rod	44
Pulley, crankshaft	45
Rocker Arm Assembly	46
Sleeve, cylinder	42
Valve, exhaust	49
Valve, intake	50
Valve Lifter	46
Valve Operating Mechanism	46
Gas	
Adaptor, crank	6
Bearings, connecting rod	8
Bearings, main	6
Cable Set	17
Camshaft	13
Carburetor	33
Crankshaft	6
Cylinder Block	4
Cylinder Head	9
Distributor	17, 18
Flywheel	6
Gear, camshaft	13
Gear, crankshaft	6
Gear, ring	6
Gear, drive, distributor	14
Governor, battery ignition	14
Ignition, battery	16
Liner, cylinder	7
Oil Filter & Lines	30
Oil Pump	29
Oil Sump	28
Piston & Connecting Rod	7
Pulley, crankshaft	6
Rocker Arm Assembly	11
Rod Assembly, oil level gauge	4
Spark Plugs	17
Tappet Valve	13
Timing Gear Cover	12
Valve, exhaust	10
Valve, intake	10
Valves & Rocker Arms	10

FUEL SYSTEMS

Filters	91
Foot Accelerator	146
Fuel Filters	69
Fuel Injection Nozzles & Lines	67
Fuel Injection Pump	61
Fuel Injection Pump Components	62
Fuel Tank	89
Injection Pump Control	94
Primer Pump & Lines	72, 73
Support, fuel tank	92

GRILLE 85

HOOD GROUP 87

INDEX

HYDRAULICS

Hydraulic System	155
Valve	156
Oil Filter & Lines, gas	30
Power Steering	184
Control Valve	184, 187
Pump (Gas)	184, 189
Pump (Diesel)	184, 191
Ram Cylinder	184, 186
Tubing	184
Pumps	
Dual, backhoe	199
Front Mounting	196, 198
Hydraulic	153
Housing	152
Single	197
Rams	
Remote Single & Double Acting	162
Single Acting	161
Traction Booster	
Inlet Section	169
Plunger Section	172
Plunger Section, double acting	174
Sensing & Outlet Section	171

MUFFLER

Diesel	77
Gas	32

NUMERICAL HARDWARE INDEX 212

NUMERICAL INDEX 216

PLATFORM 137

POSITION & TRACTION BOOSTER CONTROLS 166

SEAT, operators with support 139

SHELL, heavy duty, radiator 85

SHUTTLE CLUTCH 109

Controls	111
Collar	111
Fork	112
Lever	112
Quadrant	111
Shaft	112
Shifter	111
Controls (Power Assist)	113
Oil Cooler	117
Cover	117
Tubing	117
Oil Pump	119
Plates	
Clutch	110
Clutch, center	110
Pressure	109
Ring, snap	110
Valve (Foot Operated)	115

SIDE FRAME 148

SIDE SHEETS 94

STEERING

Front Axle	150
Axle Assembly	150
Pivot	150
Support, front	150
Governor Control	144
Shaft & Support	142
Spindle & Tie Rod	149
Arm, spindle	149
Socket, tie rod	149
U-Joint	143
Wheel, steering	142
Wheels, front	195

SUPPORT, engine 148

TORQUE HOUSING 101

Breather	101
Cap, oil filler	101
Gauge, oil level	101

TRANSMISSION

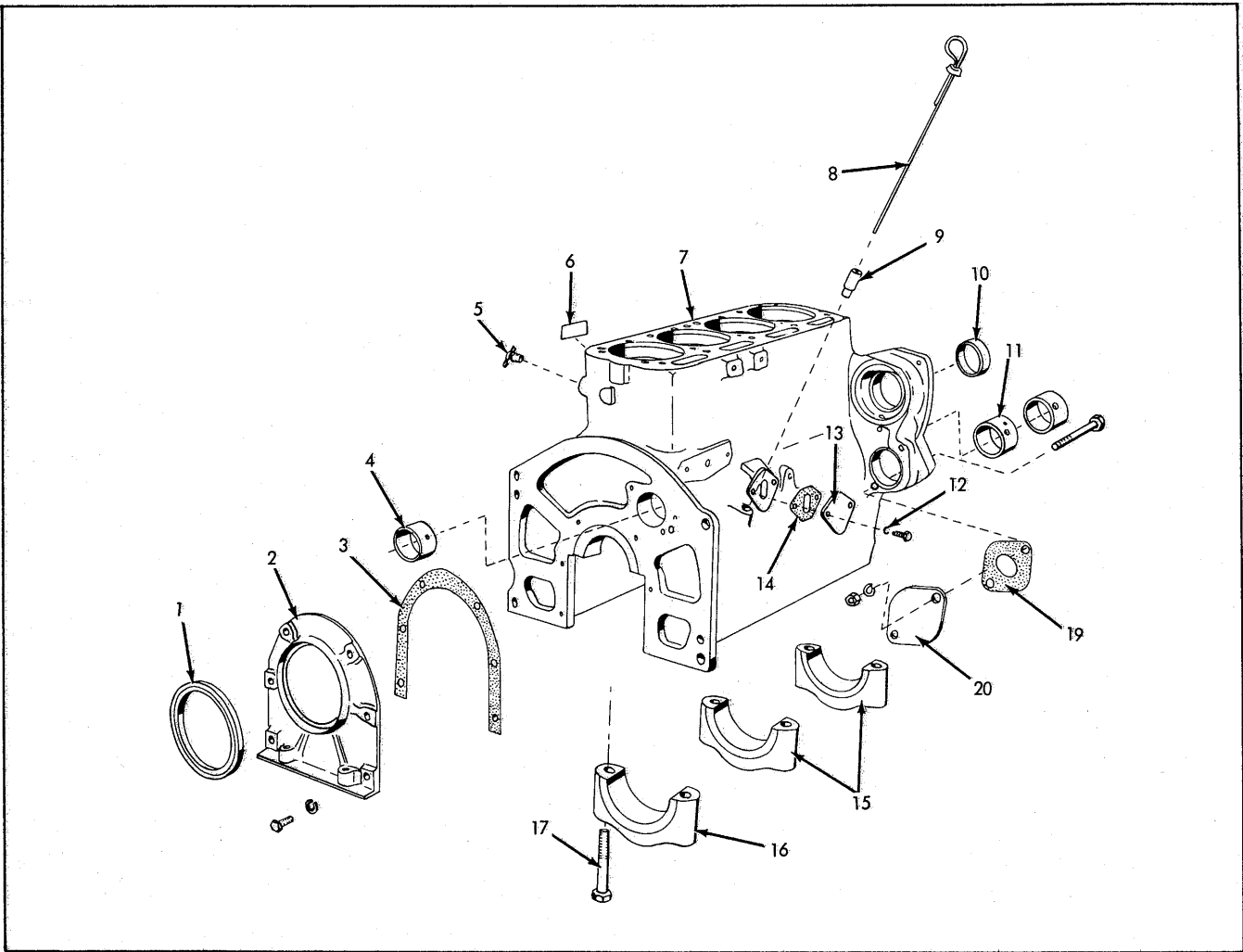
Cap, dipstick	124
Cover, rear	124
Gear Shift	128
Cover, control	128
Rod, shifter	129
Housing	124
Plug, drain	124
Power Take-Off	120
Gears	
Idler	120
PTO	120
Ring, snap	121
Shafts	121, 122
Shifter	123
Arm	123
Lever	123
Shafts & Gears	125, 126
	127

WHEEL GUARD 137

FENDERS 137

WHEELS, rear 193

Dual Rear 194



CYLINDER BLOCK
Gasoline

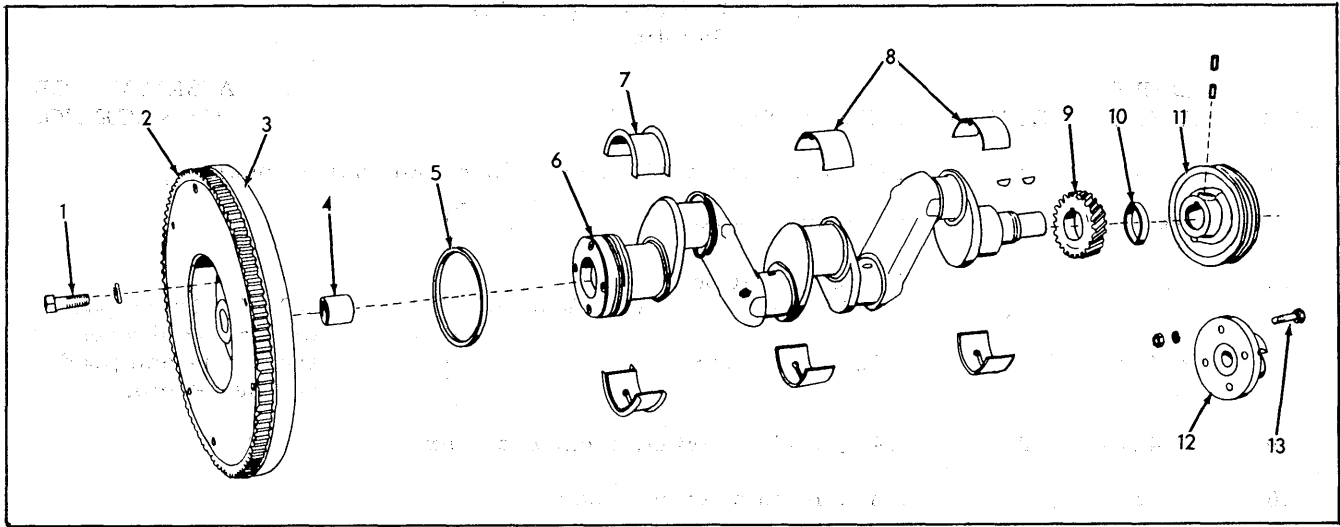
ITEM	PART NUMBER	QTY.	DESCRIPTION	ASSEMBLY OR PACKAGE NO.
1	227572	1	SEAL, crankshaft, rear	0255324-6
2	227571	1	RETAINER, crankshaft rear seal	
	6 903771		CAPSCREW	
	6 913651		LOCKWASHER	
3	233205	1	GASKET, crankshaft rear seal retainer	0255324-6
4	-----	2	BUSHING, camshaft, front & rear (See Camshaft Group)	
5	918849	1	COCK, drain	
6	-----	1	TRANSFER, instruction, water drain	243968
7	240035	1	BLOCK ASSY., cylinder (Incl. items 4, 10 thru 17)	
8	231188	1	ROD ASSY., oil level gauge (Incl SEAL)	
9	230331	1	BUSHING, oil level gauge rod	
10	-----	1	BUSHING, governor gear (See Governor Group)	

Continued

CYLINDER BLOCK (Cont'd)
Gasoline

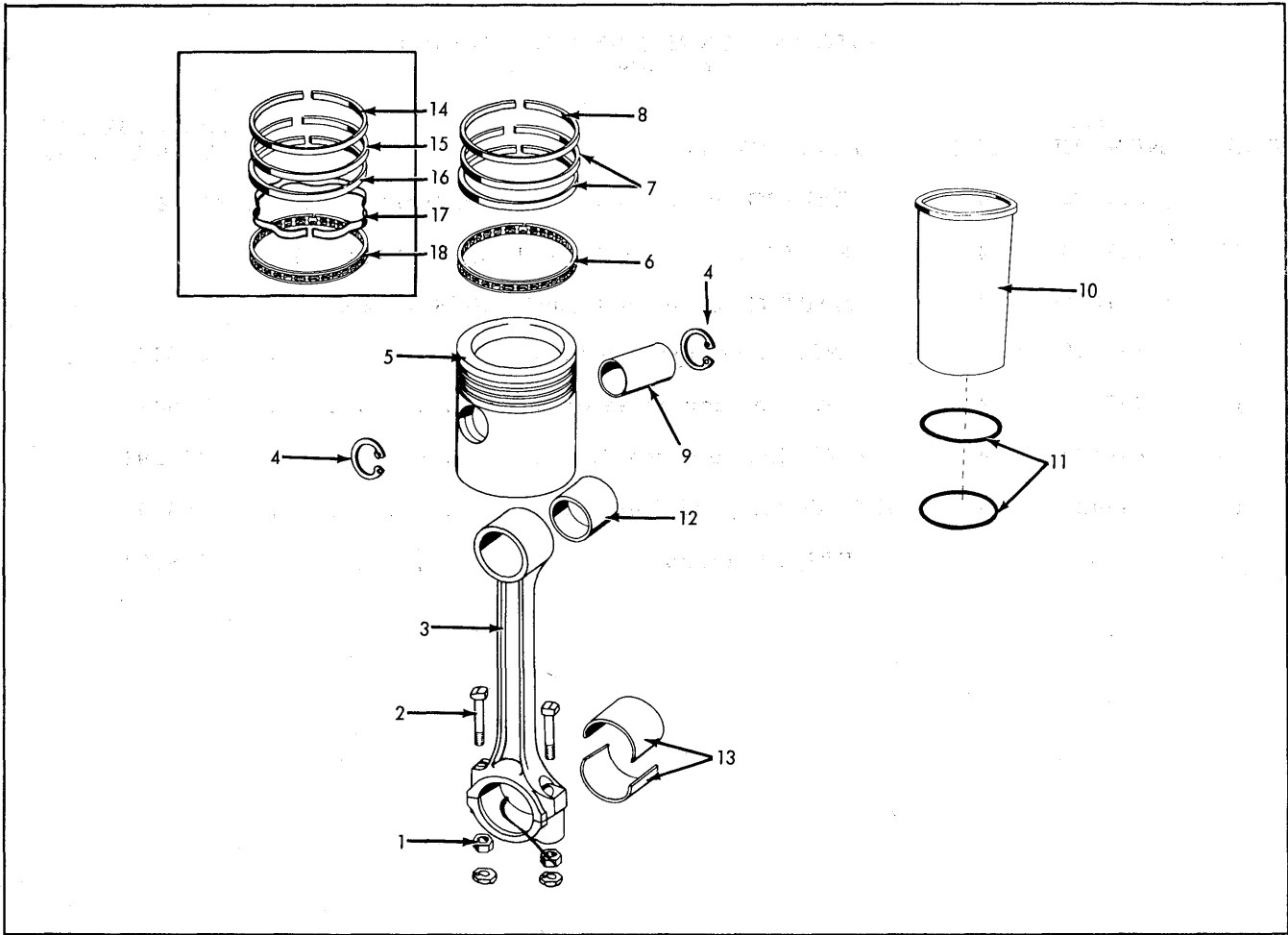
ITEM	PART NUMBER	QTY.	DESCRIPTION	ASSEMBLY OR PACKAGE NO.
11	-----	1	BUSHING, camshaft, center (See Camshaft Group)	
12	206782	2	WASHER, copper	} NOTE: These parts not required when tractor is equipped w/Fuel Pump.
13	234354	1	COVER, fuel pump 12 915809 CAPSCREW	
14	234145	1	GASKET, cover	
15	234276	2	CAP, main bearing, front & center	
16	234277	1	CAP, main bearing, rear	
17	234939	6	CAPSCREW, main bearing cap	
18	-----	1	TRANSFER, engine designation	
19	233207	1	GASKET, oil pump opening cover	
20	227574	1	COVER, oil pump opening 1 917151 CAPSCREW (Top, short) 1 916795 CAPSCREW (Bottom, long) 2 904206 LOCKWASHER 2 910123 NUT, hex	
21	291445	1	ENGINE ASSY., (160 cu. in. displacement)	

NOTE: Replacement engines do not include fan, fan belt, flywheel, clutch, shaft bushing, carburetor, muffler, air cleaner, starting motor or generator.



CRANKSHAFT & FLYWHEEL
Gasoline

ITEM	PART NUMBER	QTY.	DESCRIPTION	ASSEMBLY OR PACKAGE NO.
1	210151	4	CAPSCREW, flywheel 4 904207 LOCKWASHER	
2	233196	1	GEAR, ring, 116 T.	
3	237065	1	FLYWHEEL ASSY. (Incl. items 2 & 4)	
4	228188	1	BUSHING, clutch shaft	
5	227572	1	SEAL, crankshaft, rear	0255324-6
6	-----	1	CRANKSHAFT KIT, std.	240921
7	237831	1	BEARING, main, rear std. (2 halves).	240921
	237827	1	BEARING, main, rear, .001" U/S (2 halves)	
	237829	1	BEARING, main, rear, .0025" U/S (2 halves)	
8	237830	1	BEARING, main, front & center std. (2 halves).	240921
	237823	1	BEARING, main, front & center .001" (2 halves)	
	237825	1	BEARING, main, front & center .0025" (2 halves)	
9	227552	1	GEAR, crankshaft	240921
	1 910184		KEY, woodruff.	240921
10	226620	1	SEAL, crankshaft, front	0255324-6
11	235043	1	PULLEY, crankshaft	
	1 919774		KEY, woodruff	
	2 902870		SETSCREW	
12	237192	1	ADAPTER, crank	
13	230717	4	CAPSCREW, crank adapter	
	1 904207		LOCKWASHER	
	1 911042		NUT	



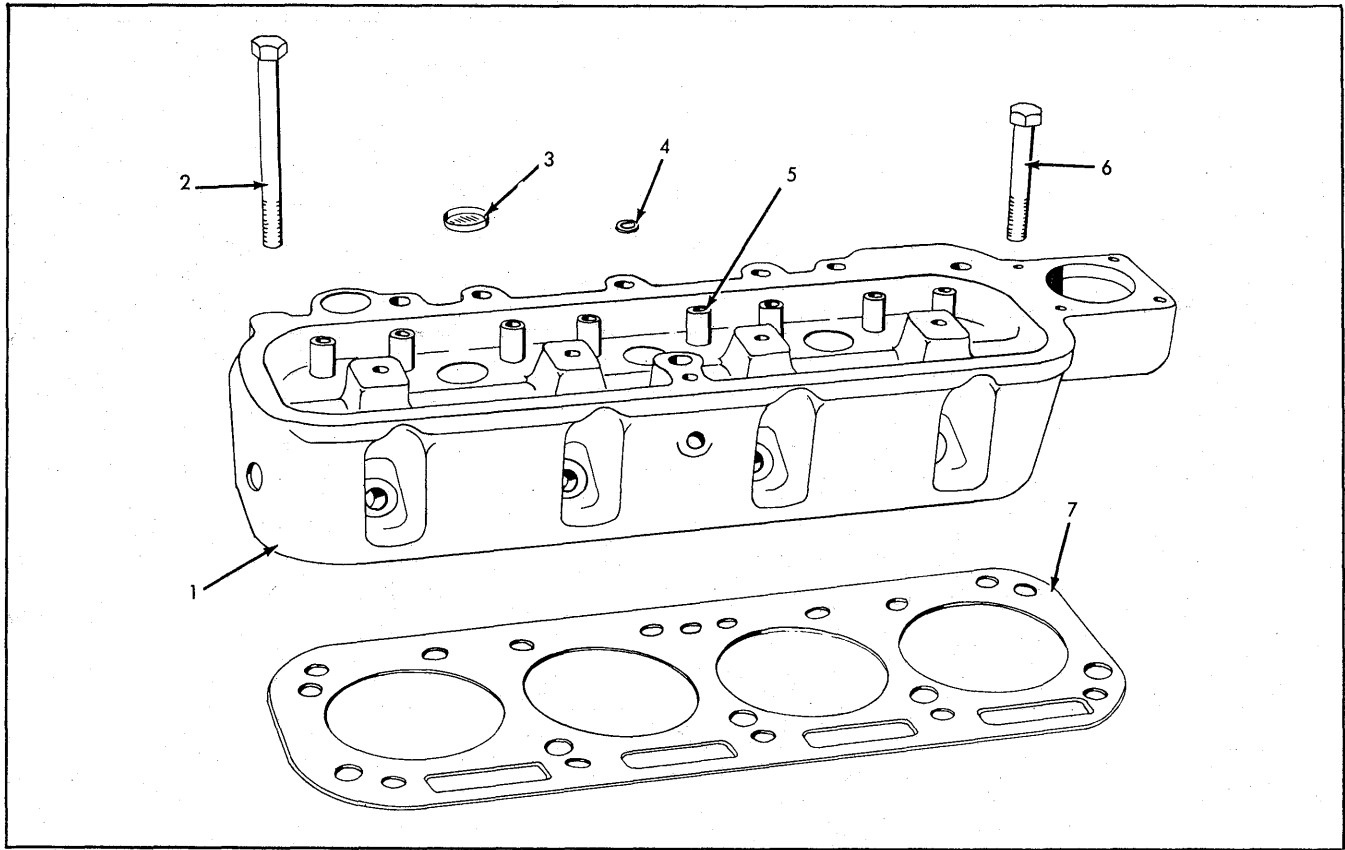
PISTON & CONNECTING ROD
Gasoline

ITÉM	PART NUMBER	QTY.	DESCRIPTION	ASSEMBLY OR PACKAGE NO.
1	225672	8	NUT, bearing cap bolt 1 914393 NUT, lock	
2	235787	8	BOLT, bearing cap	
3	237631	4	ROD ASSY, connecting (Incl. items 1, 2 & 12)	
4	4514586	8	LOCK, piston pin	285335
5	237644	4	PISTON ASSY., 8:1 ratio, gasoline (Incl. item 9)	285335
6	237650	4	RING, channel oil, piston	285335
7	237649	8	RING, compression, second & third	285335
8	237648	4	RING, compression, top	285335
9	237645	4	PIN, piston	
10	237646	4	LINER, cylinder	285335
11	237647	8	RING, packing, cylinder liner	285335
12	4507127	4	BUSHING, piston pin	

Continued

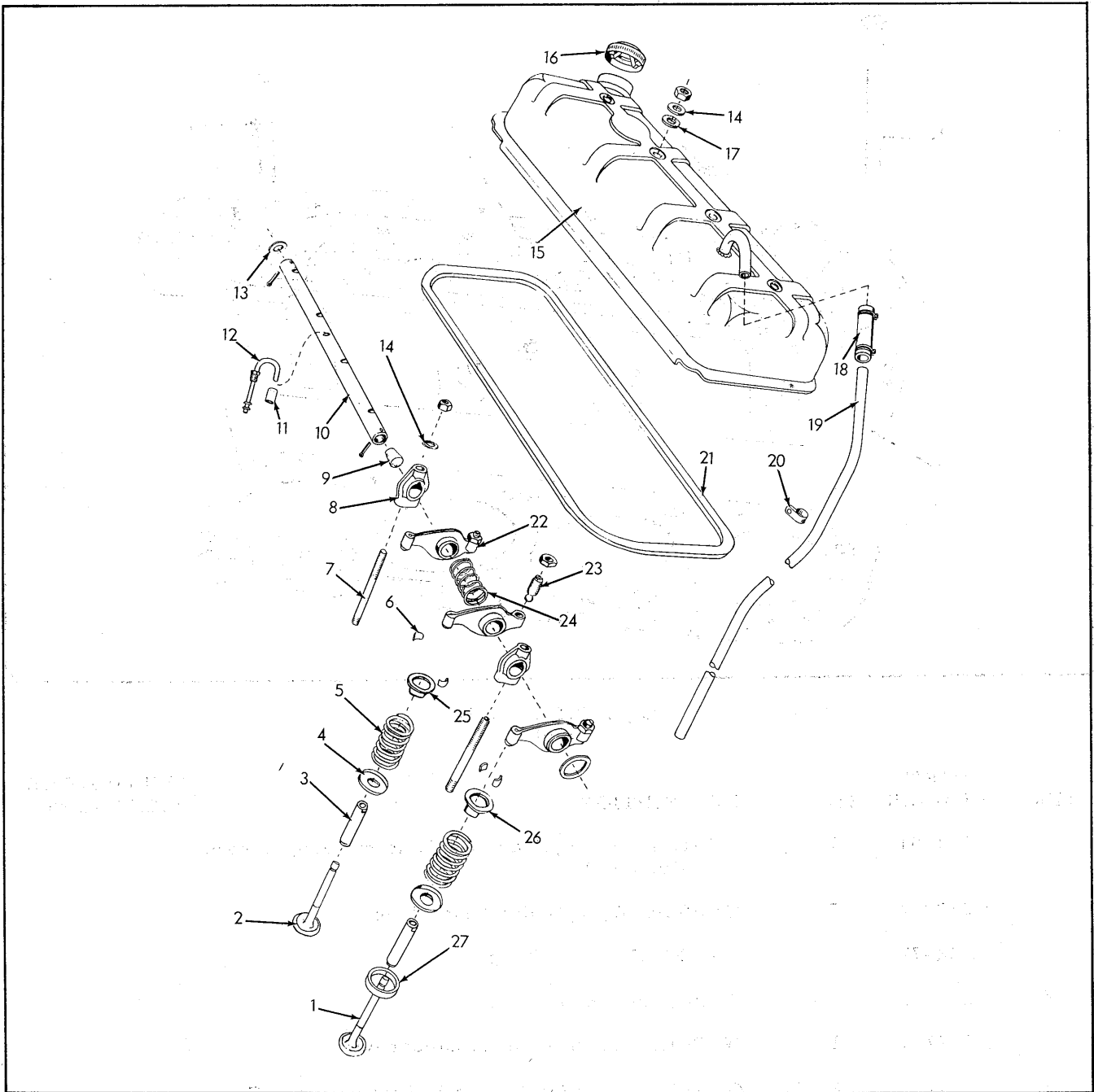
PISTON & CONNECTING ROD (Cont'd)
Gasoline

ITEM	PART NUMBER	QTY.	DESCRIPTION	ASSEMBLY OR PACKAGE NO.
13	237802	4	BEARING, conn. rod, std. (2 halves)	240921
	237814	4	BEARING, conn. rod, .001" U/S (2 halves)	
	237815	4	BEARING, conn. rod, .0025" U/S (2 halves)	
14	237648	4	RING, top compression	248293
15	237649	4	RING, 2nd compression	248293
16	248435	4	RING, 3rd compression	248293
17	248436	4	EXPANDER, 3rd Comp.	248293
18	237650	4	RING, oil control	248293



CYLINDER HEAD
Gasoline

ITEM	PART NUMBER	QTY.	DESCRIPTION	ASSEMBLY OR PACKAGE NO.
1	241591	1	HEAD ASSY., cylinder (Incl. items 3, 5, & Exh. Valve Seat)	
2	237833	7	CAPSCREW, cylinder head, long	
	922477	1	CAPSCREW, 4-1/2" lg.	
3	230318	3	PLUG, core hole	
4	229754	1	WASHER, cylinder head cap screw	
5	-----	8	GUIDE, valve (See Valves & Rocker Arms Group)	
6	922478	4	CAPSCREW, 2-7/8" lg.	
7	0237642-4	1	GASKET, cylinder head	0255324-6, 0255323-8 (replaces 237642 & 254858)



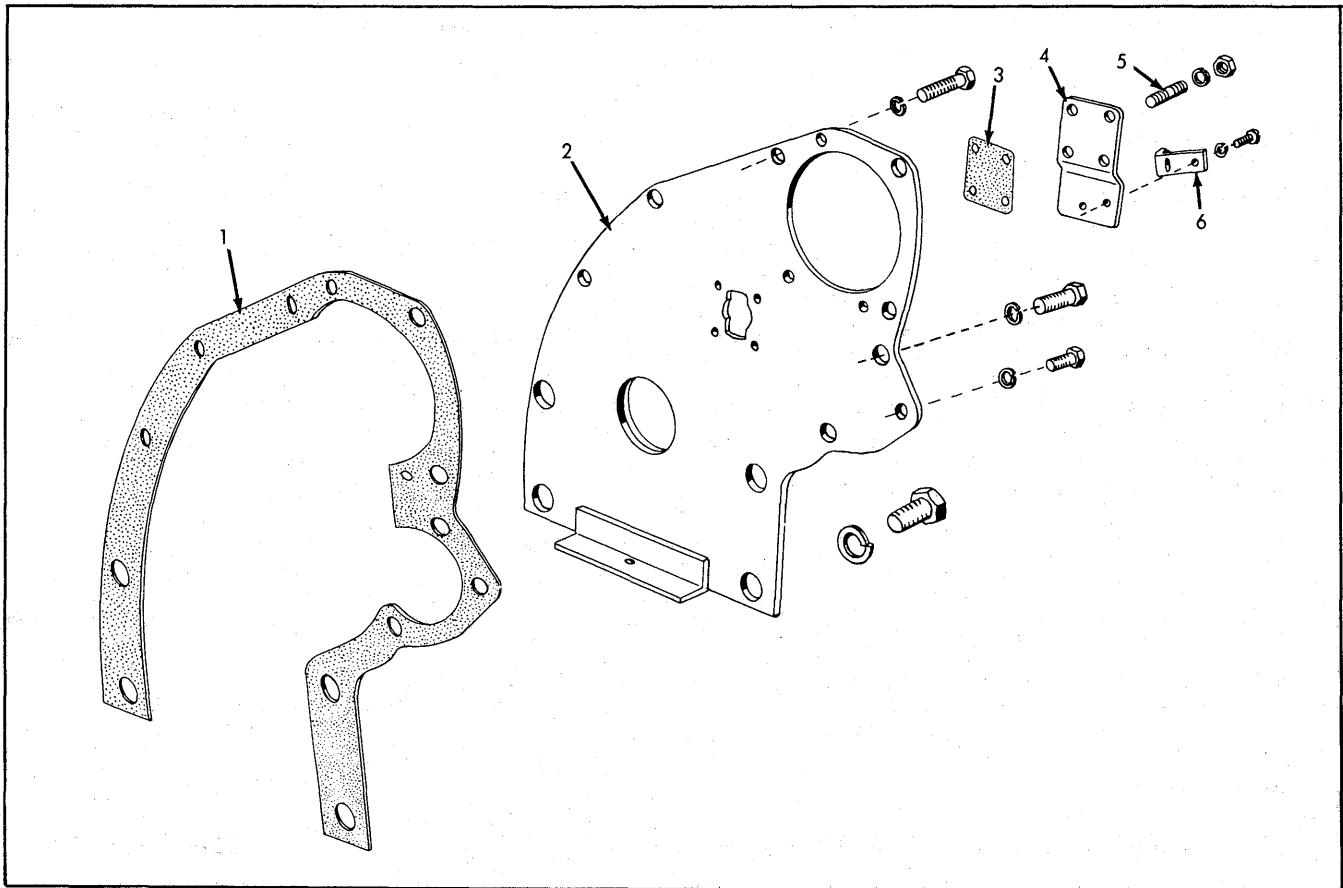
VALVES & ROCKER ARMS
Gasoline

ITEM	PART NUMBER	QTY.	DESCRIPTION	ASSEMBLY OR PACKAGE NO.
1	228589	4	VALVE, exhaust	
2	234829	4	VALVE, intake	
3	234824	8	GUIDE, intake & exhaust valve	
4	218124	8	SEAT, valve spring	
5	233850	8	SPRING, valve	
6	206880	16	LOCK, spring retainer (half)	

Continued
10

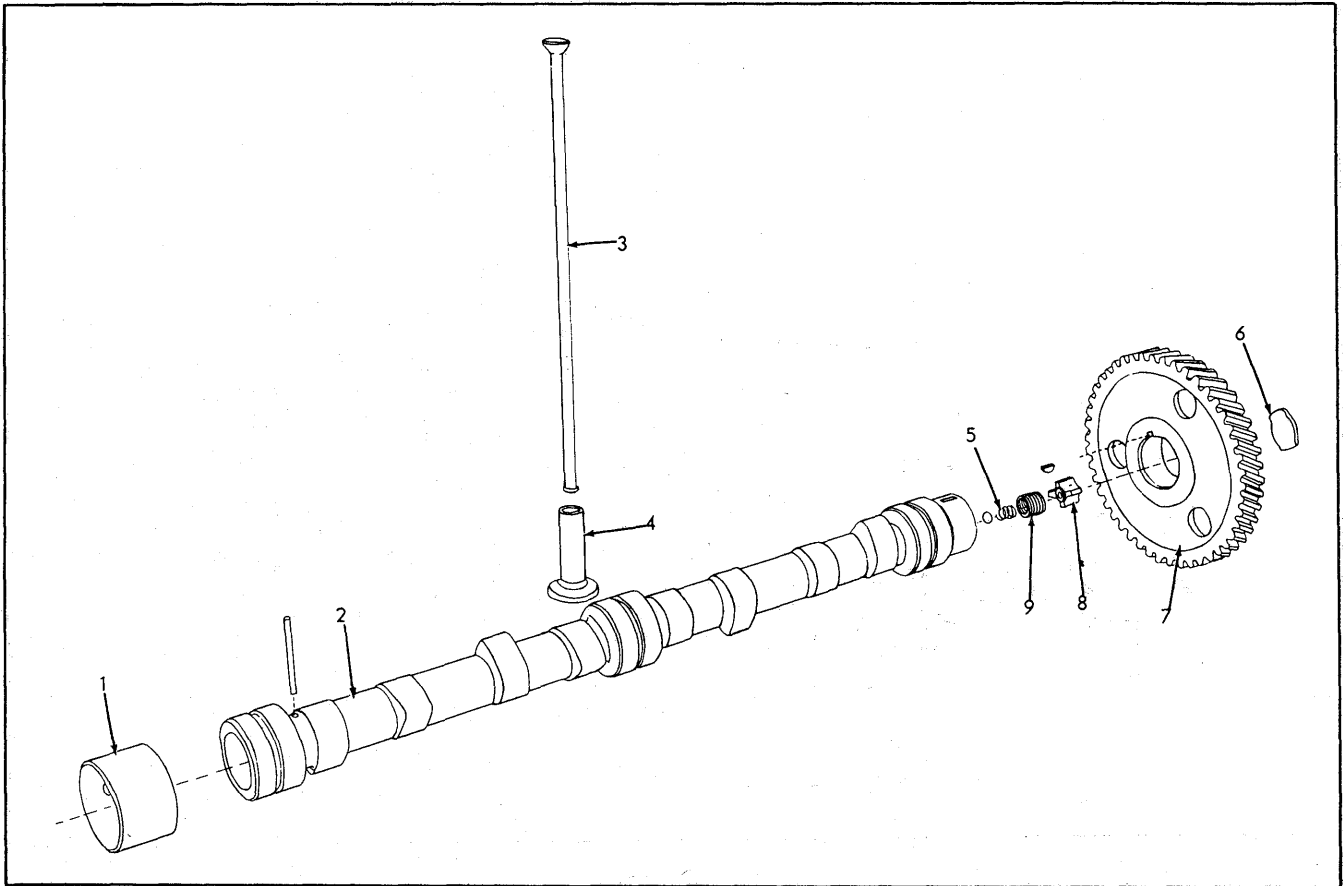
VALVES & ROCKER ARMS (Cont'd)
Gasoline

ITEM	PART NUMBER	QTY.	DESCRIPTION	ASSEMBLY OR PACKAGE NO.
7	224733	4	STUD, rocker arm support 1 910123 NUT 1 904206 LOCKWASHER (Used w/ Engine Hanger)	
8	239791	4	SUPPORT, rocker arm shaft	
9	212004	2	STOPPER, rocker arm shaft, cork	
10	228536	1	SHAFT ASSY., rocker arm (Incl. item 9 & C-PINS) 2 900807 PIN, cotter	
11	237637	1	SLEEVE, rocker arm oil tube	
12	227636	1	TUBE, oil, rocker arm shaft 1 913526 NUT	
13	203009	2	WASHER, rocker arm shaft	
14	911115	8	WASHER, support stud	
15	237643	1	COVER, rocker arm	
16	240624	1	CAP, oil filler	
17	226477	4	PACKING, cover stud0255324-6, 0255323-8
18	236745	1	HOSE, breather 2 921911 CLAMP, hose	
19	237761	1	TUBE, breather	
20	236800	1	CLAMP, breather tube to manifold stud	
21	0255296-6	1	GASKET, rocker arm cover0255324-6, 0255323-8 (replaces 232334)
22	234781	4	ARM ASSY., rocker, L.H. (Incl. item 23 & NUT)	
	234780	4	ARM ASSY., rocker, R.H. (Incl. item 23 & NUT)	
23	206888	8	SCREW, rocker arm adjusting 1 912795 NUT	
24	203011	3	SPRING, rocker arm spacing	
25	206881	4	RETAINER, valve spring, intake	
26	224926	4	ROTO-CAP, exhaust valve	
27	230510	4	SEAT, exhaust valve	



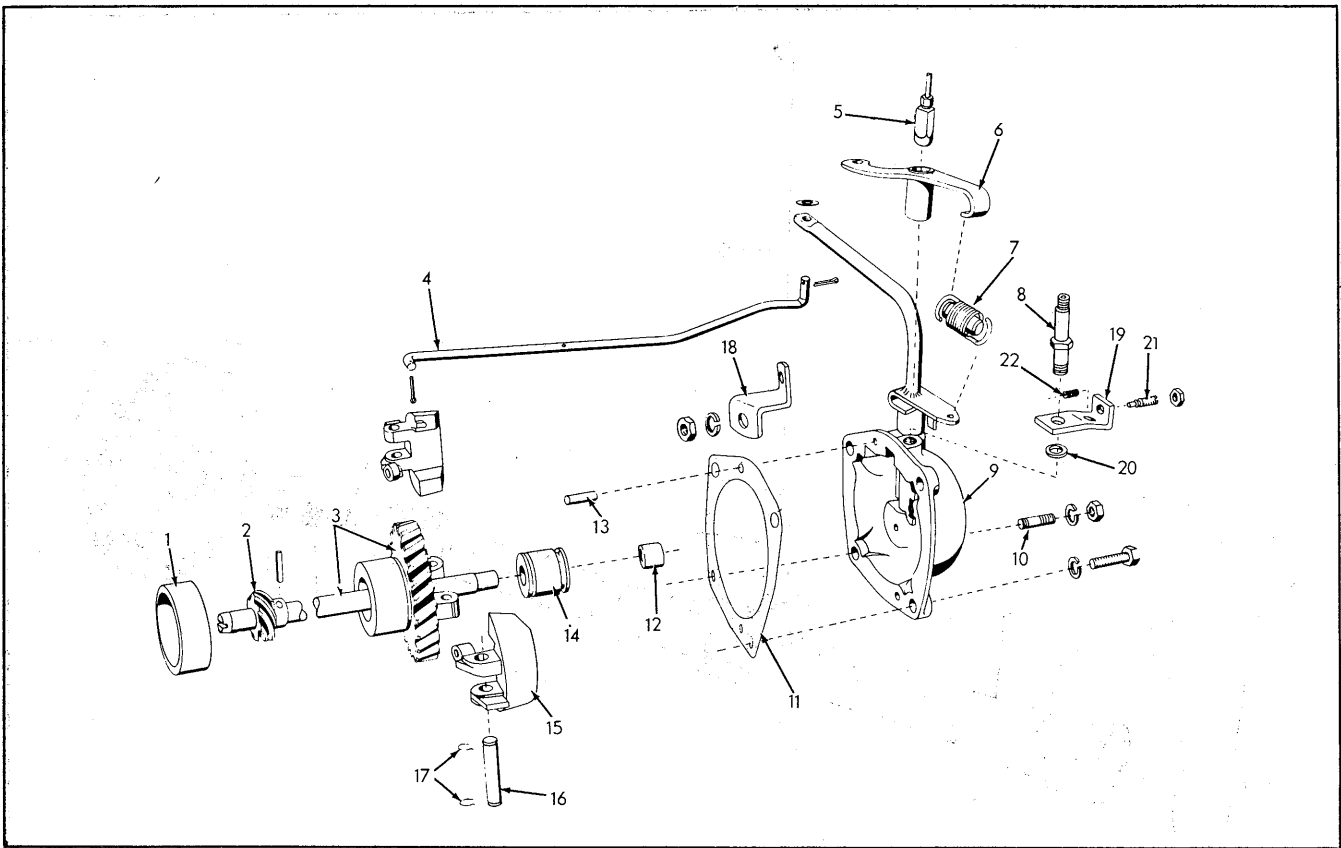
TIMING GEAR COVER
Gasoline

ITEM	PART NUMBER	QTY.	DESCRIPTION	ASSEMBLY OR PACKAGE NO.
1	233204	1	GASKET, timing gear cover	0255324-6
2	232322	1	COVER ASSY., timing gear	
	4	913828	CAPSCREW (lower) 1-1/2"lg.	
	4	904209	LOCKWASHER (lower) 5/8"lg.	
	3	915809	CAPSCREW (center) 3/4"lg.	
	6	904205	LOCKWASHER (center) 5/16" lg.	
3	0248969-8	1	GASKET, thrust cover	0255324-6 (replaces 233206)
4	235044	1	COVER, thrust, camshaft	
5	218288	4	STUD, thrust plate cover	
	4	904204	LOCKWASHER	
	4	911040	NUT	
6	235045	1	POINTER, timing	
	2	912731	SCREW, mach.	
	2	912739	LOCKWASHER	



CAMSHAFT
Gasoline

ITEM	PART NUMBER	QTY.	DESCRIPTION	ASSEMBLY OR PACKAGE NO.
1	209130	2	BUSHING, camshaft, front & rear, std.	
	233528	1	BUSHING, camshaft, center, std.	
2	233386	1	CAMSHAFT, engine 1 910946 PIN, plain	
3	227633	8	ROD, push	
4	206890	8	TAPPET, valve	
5	231529	1	SPRING, oil relief valve 1 905365 BALL, steel	
6	228158	1	PLATE, thrust	
7	207422	1	GEAR, camshaft 1 910184 KEY, woodruff	
8	242192	1	PLUNGER, thrust	
9	228160	1	SPRING, thrust	



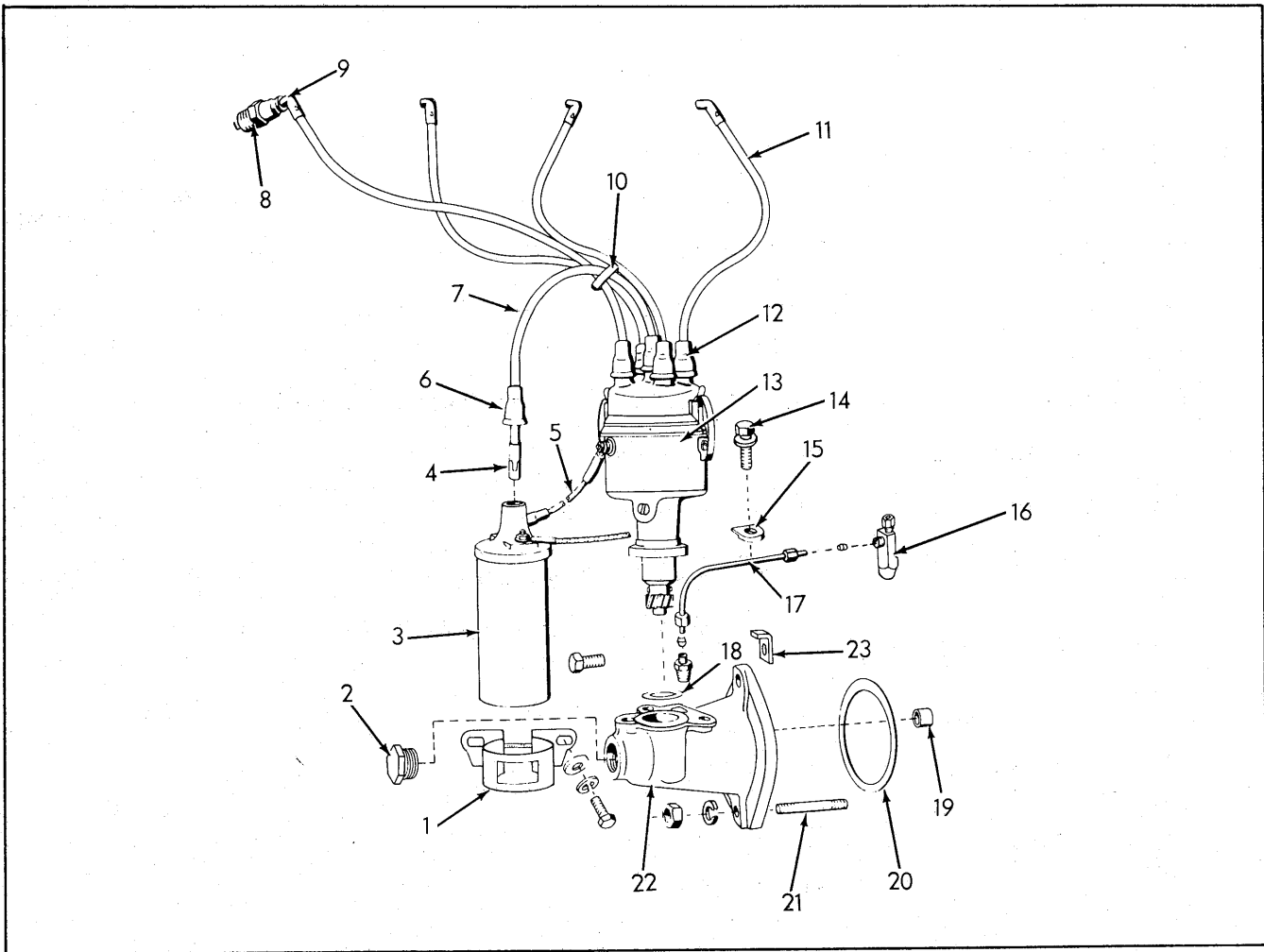
GOVERNOR
Battery Ignition
Gasoline

ITEM	PART NUMBER	QTY.	DESCRIPTION	ASSEMBLY OR PACKAGE NO.
1	210689	1	BUSHING, governor gear	
2	225353	1	GEAR, drive, distributor, 6T. 1 915796 PIN	
3	228136	1	SHAFT ASSY., governor (Incl. GEAR)	
4	237107	1	LINK, carburetor 1 911114 WASHER, plain (front) 2 900970 PIN, cotter	
5	228138	1	TEE, oil tube (Incl. 2 SLEEVES & NUTS) 2 911841 SLEEVE 2 912589 NUT	
6	234113	1	LEVER ASSY., control rod (Incl. BUSHING)	
7	223516	1	SPRING, governor (Incl. PLUNGER)	
8	234109	1	PIN, pivot, control rod lever	
9	234107	1	HOUSING ASSY., governor (Incl. SPRING LEVER, CROSS SHAFT COLLAR, CROSS SHAFT BUSHING, CROSS SHAFT, FORK, & Item 12)	
10	207402	1	STUD, housing 1 904205 LOCKWASHER 1 910323 NUT	

Continued

GOVERNOR (Cont'd)
Battery Ignition
Gasoline

ITEM	PART NUMBER	QTY.	DESCRIPTION	ASSEMBLY OR PACKAGE NO.
11	233213	1	GASKET, housing	0255324-6 (replaces 239958)
12	207714	1	BUSHING, governor shaft, front	
13	915796	2	PIN, dowel, housing	
14	208875	1	BEARING, ball, thrust	
15	233928	2	WEIGHT ASSY., governor (Incl. RISER PIN)	
16	207718	2	PIN, pivot, weight	
17	207719	4	CLIP, weight pivot pin	
18	234114	1	BRACKET, governor adjustment 1 905657 CAPSCREW 1 910880 NUT 1 904206 LOCKWASHER 1 910324 NUT	
19	234110	1	BRACKET, bumper spring	
20	234111	1	WASHER, pivot pin 1 920437 NUT, jam	
21	234112	1	SCREW, bumper spring	
22	4614092	1	SPRING, bumper	



IGNITION
Battery
Gasoline

ITEM	PART NUMBER	QTY.	DESCRIPTION	ASSEMBLY OR PACKAGE NO.
1	225606	1	CLAMP ASSY., coil (Incl. SCREW, which is not serviced separately)	
	2	905661	CAPSCREW	
	2	904205	LOCKWASHER	
	1	910335	WASHER, plain	
2	228141	1	PLUG, distributor drive housing (Not used with operation meter)	
3	229518	1	COIL ASSY., ignition (Incl. item 1)	
4	912803	6	TERMINAL, cable (Coil & Distributor End)	
5	228131	1	CABLE, primary, distributor to coil	
6	225073	1	NIPPLE, cable (f/coil)	
7	-----	1	CABLE, secondary, coil to distributor 229867	

IGNITION (Cont'd)

Battery

Gasoline

ITEM	PART NUMBER	QTY.	DESCRIPTION	ASSEMBLY OR PACKAGE NO.
8	239677	4	PLUG, spark (Auto-Lite) (f/gasoline)	
	224990	4	PLUG, spark (A-C) (f/gasoline)	
	239678	4	PLUG, spark (Champion) (f/gasoline)	
9	206460	4	TERMINAL, spark plug cable (plug end)	
10	203203	1	RETAINER, cable	
11	-----	2	CABLE, spark plug, No. 1 & 2 cylinder	229867
	-----	1	CABLE, spark plug, No. 3 cylinder	229867
	-----	1	CABLE, spark plug, No. 4 cylinder	229867
12	225484	5	NIPPLE, cable (f/distributor)	
13	-----	1	DISTRIBUTOR ASSY. (See Distributor Group)	
14	226683	2	CAPSCREW, distributor clamp (Incl. LOCKWASHER)	
15	225344	2	CLAMP, distributor to drive housing	
16	228138	1	TEE, oil tube (Incl. SLEEVE & NUTS)	
			2 911841 SLEEVE	
			2 912589 NUT	
17	226007	1	TUBE, oil	
			1 910125 CONNECTOR (Incl. SLEEVE & NUT)	
			2 911841 SLEEVE	
			2 912589 NUT	
18	233211	1	GASKET, distributor base to drive housing . . .	0255324-6
19	225348	1	BUSHING, governor shaft, rear	
20	233212	1	GASKET, drive housing to cylinder block . . .	0255324-6
21	232126	1	STUD, drive housing	
			1 904206 LOCKWASHER	
			1 910324 NUT	
22	228500	1	HOUSING ASSY., distributor drive (Incl. item 19)	
23	207430	1	CLIP, drive housing	
			1 910211 CAPSCREW	
			1 904206 LOCKWASHER	
--	-----	1	CABLE SET, spark plug	229867