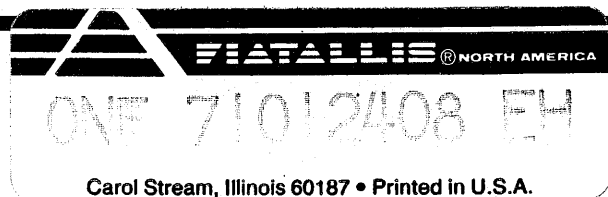




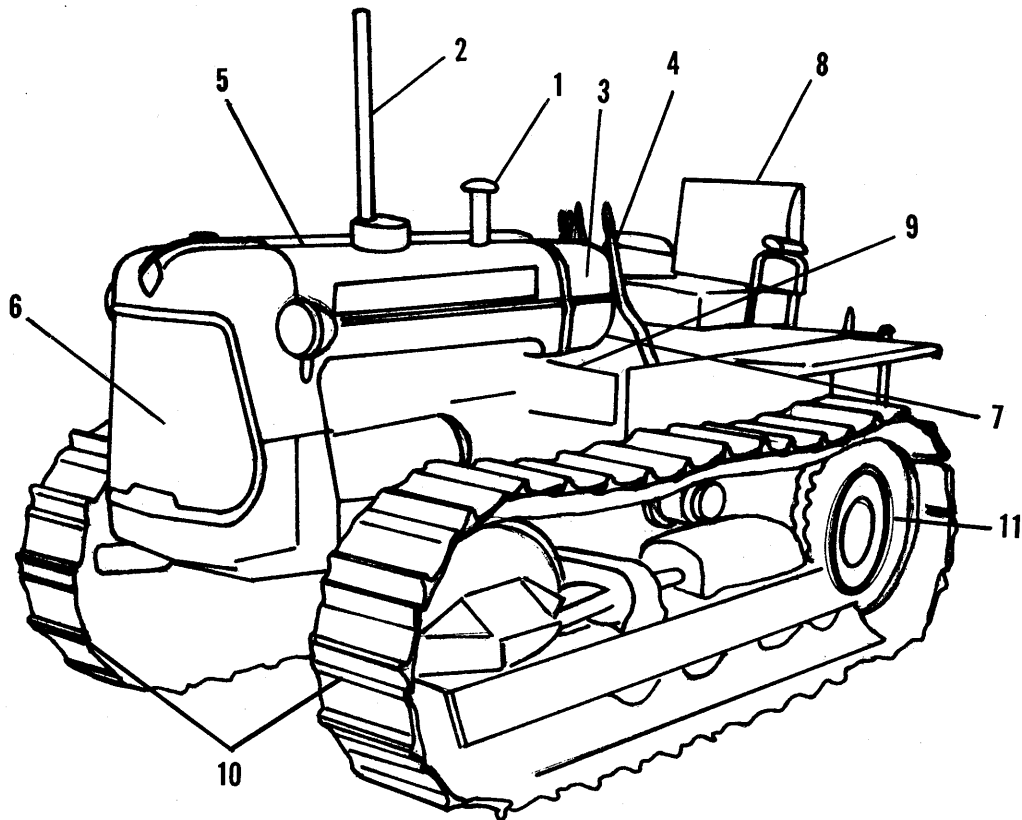
PARTS CATALOG

H-3 & HD-3 CRAWLER TRACTORS

12/12
LITHO U.S.A.



GENERAL DESCRIPTION



- | | |
|---------------------------|---------------------|
| 1. AIR CLEANER | 7. INSTRUMENT PANEL |
| 2. EXHAUST MANIFOLD | 8. OPERATORS SEAT |
| 3. FUEL TANK | 9. PLATFORM |
| 4. SHUTTLE CLUTCH CONTROL | 10. TRACK |
| 5. HOOD, SHELL | 11. TRUCK WHEEL |
| 6. GRILLE | |

FOREWORD

The parts in this catalog are listed in alphabetical order and are located at the front of this catalog.

Except for some common hardware all parts are identified with an item number. Common hardware not identified such as bolts, nuts, cotter pins and lubrication fittings, are listed in the text under the part which they attach or fit into. Note particularly that the quantity of hardware listed is always the quantity required for one part.

Common attaching hardware listed under a part is not included in the assembly or included with the part unless specified. Example: (Incl. Bolt, Lock-washer and Nut).

"Assembly or Packaged Parts" indicates if an individual part is one of many in a large assembly or one of several kinds in a package.

All numbers are listed in the second last section of this catalog showing the quantity and description of the various parts that make up the assembly or package.

The last section of this catalog contains a part number index to indicate on which page or pages a part number appears.

All illustrations will be found to follow the text of each group or section of which it is a part.

For any additional copies of this catalog there will be a supplementing service charge of three dollars. Refer any requests to your Branch House or office under which you operate.

HOW TO ORDER PARTS

Order all parts for this machine from your local ALLIS-CHALMERS Dealer.

When ordering parts for this unit, supply the following information:

1. The tractor and engine serial numbers.
2. The model or name of the unit and its serial number.
3. State the common name of the part you wish to order, or a description of the part and its location on the unit, or bring in old part.
4. Always print your name and post office address, where parts are to be shipped; also specify whether material is to be shipped by freight, express or parcel post.
5. When ordering parts always determine right hand and left hand from a position in the operators seat facing the direction of forward travel. On Backhoe Units Right and Left is determined by facing the Backhoe from the operator seat.

IMPORTANT

Unless claims for shortages or errors are made immediately upon receipt of goods, they will not be considered.

When broken goods are received, a full description of the damage should be made by the carrier agent on the freight bill. If this description is insisted upon full damage can always be collected from the transportation company.

No responsibility is assumed for delay or damage to merchandise while in transit. Our responsibility

ceases upon delivery of shipment to the transportation company, from whom a receipt is received showing that shipment was in good condition when delivered to them; therefore claims (if any) should be filed with the transportation company and not with Allis-Chalmers Manufacturing Company.

The right is reserved to change the construction or material of any parts where it seems desirable to do so, without incurring the obligation of installing such changes on units already delivered.

INDEX

AIR CLEANER:

Diesel	94, 96
Gas	40, 41

AIR CLEANER INDICATOR	214
--	-----

AIR HEATER, diesel	88, 93
-------------------------------------	--------

ASSEMBLIES & PACKAGED PARTS	220, 221, 222, 223, 224
--	----------------------------

ATTACHMENTS:

Belt Pulley	207, 208
Drawbar	185
Extension	185
Drive Shaft, rear winch	147A
Ether Starting System, diesel	205
Flexible Drive Shaft	216, 217
Grille Screen, radiator	213
Hose and Couplings, bulk	219
Hour Meter	218
Low Clearance Muffler, gas	204
Operation Meter	216, 217
Pull Hook	206
Tool Box, gas	206
Tool Box, diesel and gas	206
Universal Carrier Bracket	219
Water Heater, engine (Opt.)	215

CLUTCH:

Engine:	
Disc, driven	129
Gears:	
Drive	129, 130
Drive, intermediate	131
Driven	131
Plates:	
Back	124
Pressure	124
Rings, snap	130, 131
Shaft	129
Pedal	125

DRIVE SHAFT & RING GEAR	154
--	-----

Carrier:	
Bearing	154
Ring Gear	154
Gear, ring	154
Shaft, drive	154
Sleeve	155

ELECTRICAL:

Diesel:	
Battery	100
Battery Box	101
Cables	99, 100
Electrical System	99
Fan, generator	100
Fuse	99
Generator	100, 102
Harnesses	100
Instrument Panel	122

Ammeter	122
Cables	123
Gauges	122, 123
Key, ignition	123
Lamp	123
Switches	123
Pulley, generator	100
Starting Motor	100, 107
Voltage Regulator	100

Gasoline:

Battery	43
Battery Tray	116
Cables	43
Cables, battery	116
Electrical System	43
Fuses	44
Generator	44, 102
Harnesses	43, 45
Instrument Panel	122
Ammeter	122
Cables	123
Gauges	122, 123
Key, ignition	123
Lamp	123
Switches	123
Lamp Assy., head	44
Pulley, generator	44
Starting Motor	44, 102
Voltage Regulator	43

ENGINES:

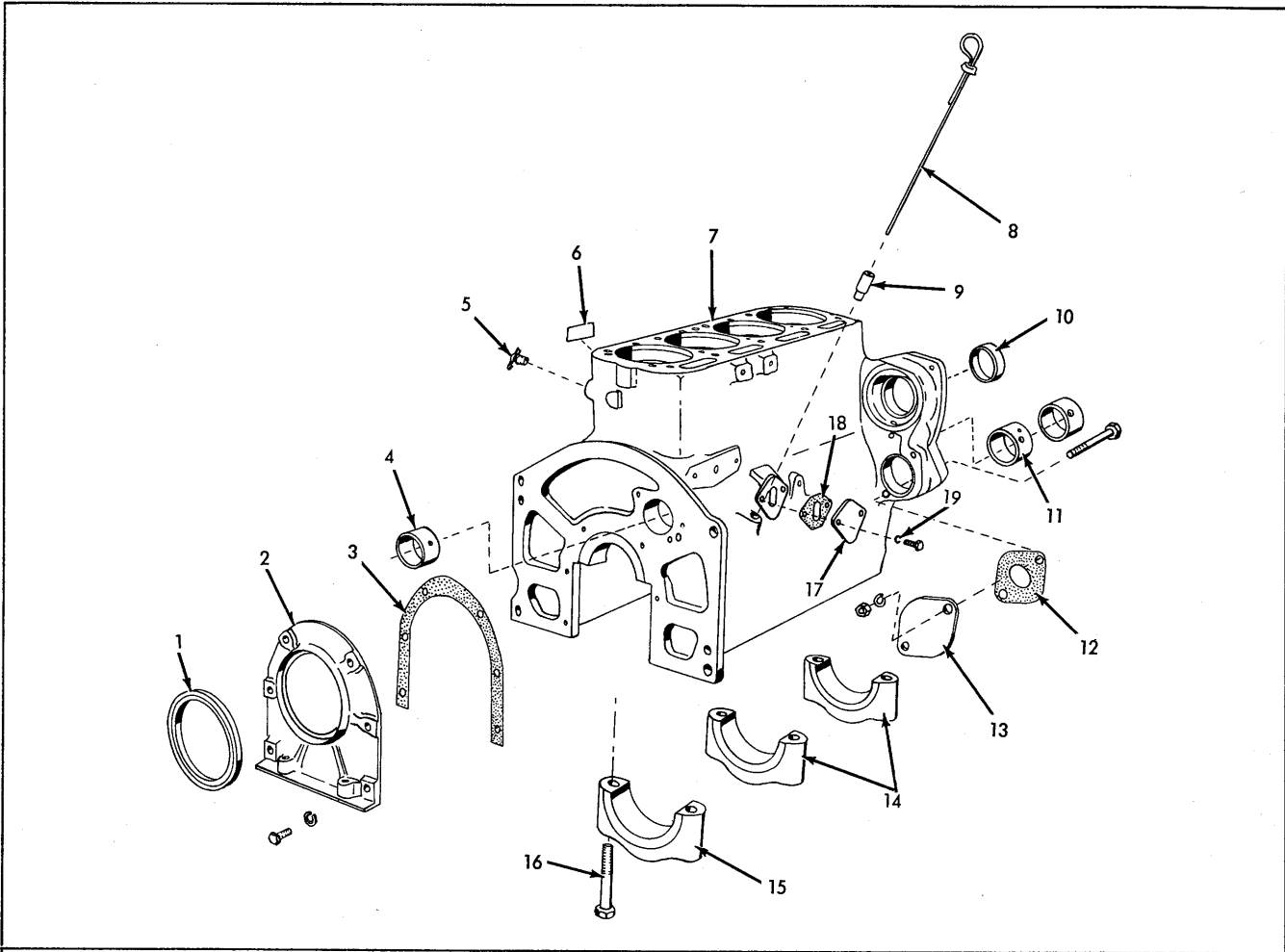
Diesel:	
Bearings, main	47, 48
Belt, tan	90
Blade Assy., tan	91
Block Assy., cylinder	46
Camshaft	52
Caps, main bearings	47
Choke Control	121
Connecting Rods	49
Cover, fuel pump pad	48
Cover Assy., cyl. head	56
Crankshaft	51
Cylinder Head	54
Engine Assy.	48
Extension, muffler	97
Flywheel Assy.	61
Fuel Filters	82
Fuel Injection Nozzle and Lines	67
Holder Assy.	67
Nozzle Assy.	67
Fuel Tank Filter	92, 118
Gear, camshaft	53
Gear, crankshaft	51
Gear, drive	69

Gear, driven	69
Gear, ring	61
Gear Cover	62
Impeller	90
Injection Pump Control	121
Manifold:	
Exhaust	64
Intake	64
Oil Filter	86
Oil Pan	60
Oil Pump	58
Piston Assy.	49
Primer Pump and Lines	84
Pulley	90
Pulley, tan drive	51
Pump, hand primer	85
Pump, injection	71, 77
Pump Assy., fuel injection	69
Push Rods	53
Rings, piston	49
Rocker Arms	53
Sleeve, cylinder	47
Thermostat	66
Valves:	
Exhaust	56
Intake	57
Water Inlet Pipes	65
Water Outlet Pipes	65
Water Pump	90
Gasoline:	
Bearings, main	10
Belt, tan	34
Blades, tan	34
Block Assy., cylinder	4
Cables, spark plugs	29
Camshaft	14
Caps, main bearings	5
Carburetor	21, 25, 38
Choke Control	121
Connecting Rods	7, 8
Cover, fuel pump	5
Cover, timing gear	16
Crankshaft Kit	10
Cylinder Head	15
Distributor	31, 32A
Engine Assy.	5
Extension, muffler	39
Fan, water pump	34
Flywheel Assy.	10
Fuel Filter	19, 118
Fuel Line	27
Fuel Pump	27
Gear, camshaft	14
Gear, crankshaft	10
Gear, ring	10
Governor	17
Ignition	28
Impeller	34
Liner, cylinder	7, 8

INDEX

Manifold:	
Exhaust	39
Intake	39
Oil Filter and Lines	42
Oil Pump	37
Oil Sump	36
Piston Assy.	7
Pulley, crankshaft	11
Pulley, pump	34
Push Rods	14
Rings, piston	7, 8
Rocker Arms	13
Tappets	14
Thermostat	33
Valves:	
Exhaust	13
Intake	13
Water Manifold	33
Water Pump	34
ENGINE MOUNTS	110
FENDERS	182
FINAL DRIVE:	
Brakes:	
Arm	159
Band	159
Lining	159
Linkage, latch	161
Fork	162
Lever	161, 162
Shaft	162
Clutch:	
Disc, driven.	157
Flywheel	157
Hub	157
Lever, hand.	156
Plate:	
Back	157
Pressure	157
Steering	157
Housing	165
Axle, rear	165
Gear, final	165
Pan	166
Ring, seal	166
Shaft, pinion	165
Sprocket	166
FUEL GAUGE	118
FUEL TANK	118
FUEL TANK SUPPORT	116
GRILLE, radiator	112
HOOD:	
Diesel and Gas	114
HYDRAULICS:	
By-Pass Valve Group.	203
Control Valves:	
1 Spool	191, 192
3 Spool	191, 192

Diverter Valve	200A	INDEX	Idler Assy.	169, 170
Dual Pump, 403 Winch	188A, 189, 190		Block, tapping	169, 171
Extra Spool Valve and Line	198		Plate, wear	169, 171
Hydraulic System f/Torque Housing			Shaft	169, 170
Reservoir and Fender Mounted Valve	196, 197		Mainframe	177
Hydraulic System w/Fender Mounted			Release, track	172
Reservoir	193, 194, 195		Housing	172
Lines, Loader and Backhoe	199, 200		Lock, adjusting	173
Pump	186, 187		Roller	173
Pump Drive and Mounting	190A		Seat, spring	172, 173
Relief Valve, circuit w/1066 L	201, 202		Yoke Assy.	173
Single Pump	188		Track	180, 181
MUFFLER:			Gauge, track wear	181
Diesel	97		Rail Assy.	181
Gas	39		Shie, grouser	181
NUMERICAL INDEX	226		Truck Wheel	174, 176
PAN ADAPTOR , bottom	210A		Block, tapping	175, 176
PAN GUARD , bottom	209, 210		Bracket	174, 176
PLATFORM	182, 183		Shaft	174, 176
RADIATOR	112		TRANSMISSION:	
RADIATOR SHELL	112		Cap , dipstick	148
ROCK GUARD	209, 210		Cover , rear	148
SEAT GROUP	184		Gear Shift	152
SEAT SUPPORT	182, 183		Cover, control	152
SHUTTLE CLUTCH	132		Forks	152, 153
Controls	134		Levers	153
Collar	135		Rods, shifter	152, 153
Fork	135		Housing	148
Lever	134		Plug , drain	148
Quadrant	135		Power Take-Off	141
Shaft	135		Gears:	
Shifter	135		Idler	143, 146
Oil Cooler	137, 138, 139,		PTO	141, 147
140			Housing	145
Cover	137, 139		Ring, snap	142, 143, 146
Tubing	138, 140		Shafts	141, 143, 145,
Oil Pump	136		146, 147	
Gears:			Shifter	144
Drive	136		Arm	144
Driven	136		Lever	144
Plates:			Shafts and Gears	149, 150, 151
Clutch	133			
Clutch, center	133			
Pressure	132			
Ring, snap	132, 133			
SIDE SHEETS	120			
THROTTLE CONTROL , fuel	117			
TORQUE HOUSING	126			
Breather	126			
Cap , oil filler	126			
Cover , PTO gear	127			
Cover , pulley	127			
Gauge , oil level	126			
Housing , pump	127			
Tube , oiler	128			
TRACK GROUP:				
Axle	177			
Frame	177, 178			



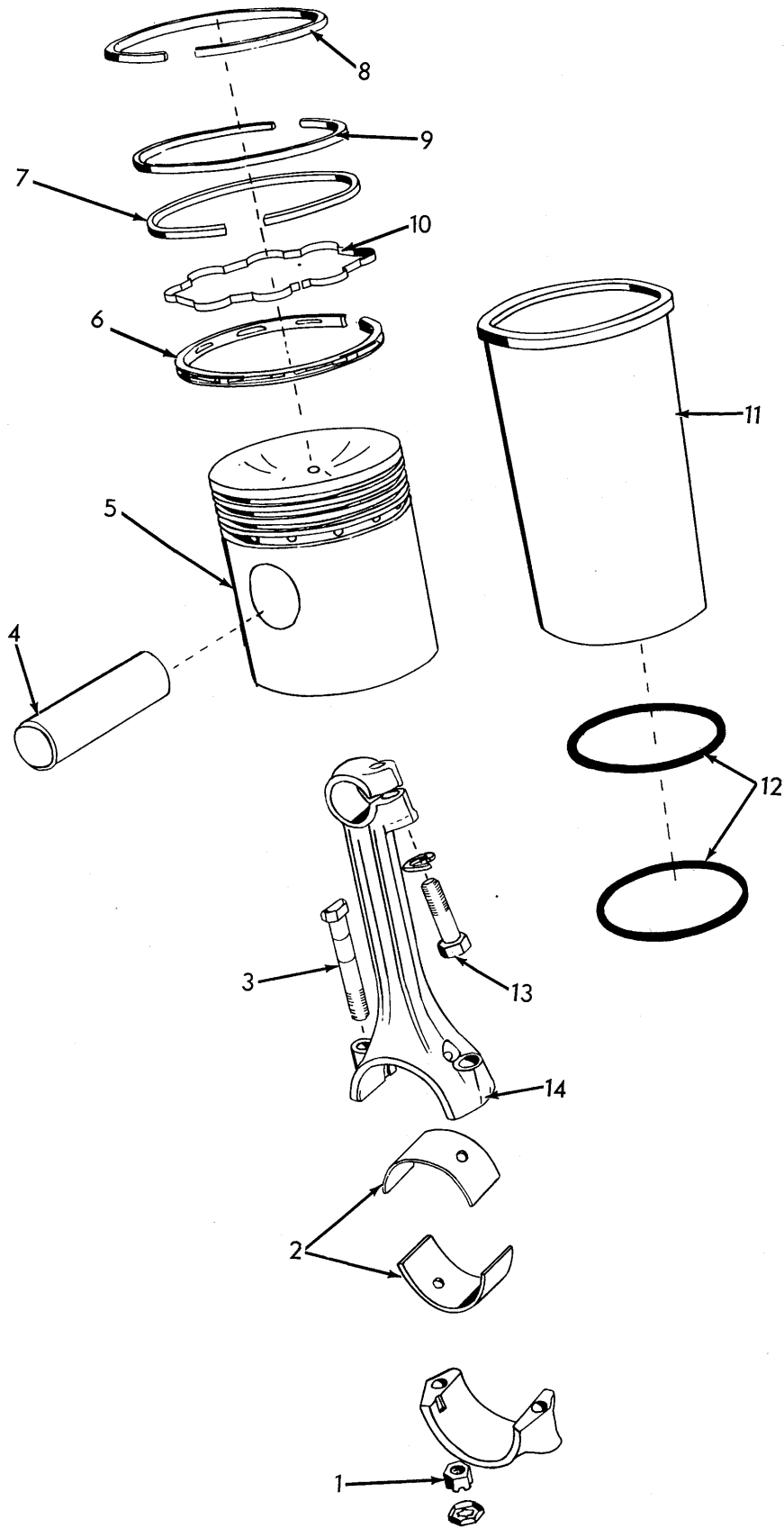
CYLINDER BLOCK
Gasoline

ITEM	PART NUMBER	QTY.	DESCRIPTION	ASSEMBLY OR PACKAGE NO.
1	227572	1	SEAL, crankshaft, rear	0255342-6
2	227571	1	RETAINER, crankshaft rear seal	
	6 903771		CAPSCREW	
	6 913651		LOCKWASHER	
3	233205	1	GASKET, crankshaft rear seal retainer	0255324-6
4	-----	2	BUSHING, camshaft, front & rear (See Camshaft Group)	
5	918849	1	COCK, drain	
6	-----	1	TRANSFER, instruction, water drain	234052
7	234353	1	BLOCK ASSY., cyl. (Incl. items 4, 10, 11, 14, 15) (Used prior to tractor S/N 6959)	
	240035	1	BLOCK ASSY., cyl. (Incl. items 4, 10, 11, 14, 15 thru 19) (Eff. w/tractor S/N 6959 & up)	
8	231188	1	ROD ASSY., oil level gauge (Incl. SEAL)	

Continued

CYLINDER BLOCK (Cont'd)
Gasoline

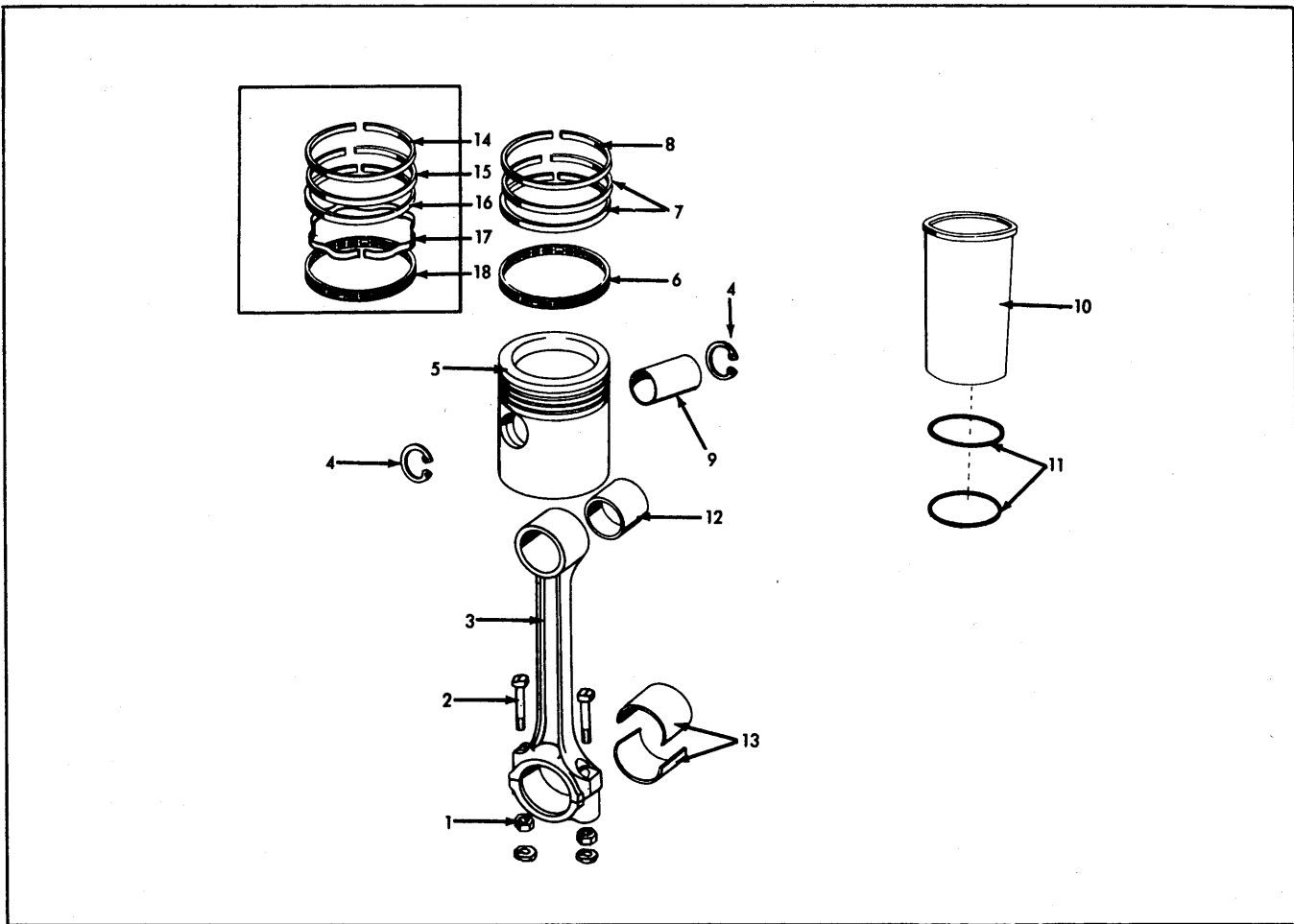
ITEM	PART NUMBER	QTY.	DESCRIPTION	ASSEMBLY OR PACKAGE NO.
9	230331	1	BUSHING, oil level gauge rod	
10	-----	1	BUSHING, governor gear (See Governor Group)	
11	-----	1	BUSHING, camshaft, center (See Camshaft Group)	
12	233207	1	GASKET, oil pump opening cover	0255324-6
13	227574	1	COVER, oil pump opening	
		1	917151 CAPSCREW	
		1	916795 CAPSCREW	
		2	904206 LOCKWASHER	
		2	910123 NUT	
14	234276	2	CAP, main bearing, front & center	
15	234277	1	CAP, main bearing, rear	
16	234939	6	CAPSCREW, main bearing cap	
17	234354	1	COVER, fuel pump	} NOTE: These parts not required when tractor is equipped w/Fuel Pump.
		12	915809 CAPSCREW	
18	234145	1	GASKET, cover	
19	206782	2	WASHER, copper	
20	-----	1	TRANSFER, engine designation (Not Illustrated). .	.234052
-	291445	1	ENGINE ASSY., replacement (160 cu. in. displacement) Does Not Include; flywheel, clutch shaft bearing, crankshaft pulley, engine supports, carburetor linkage, carburetor, clutch, air cleaner, starting motor, generator or fan.	



PISTON & CONNECTING ROD

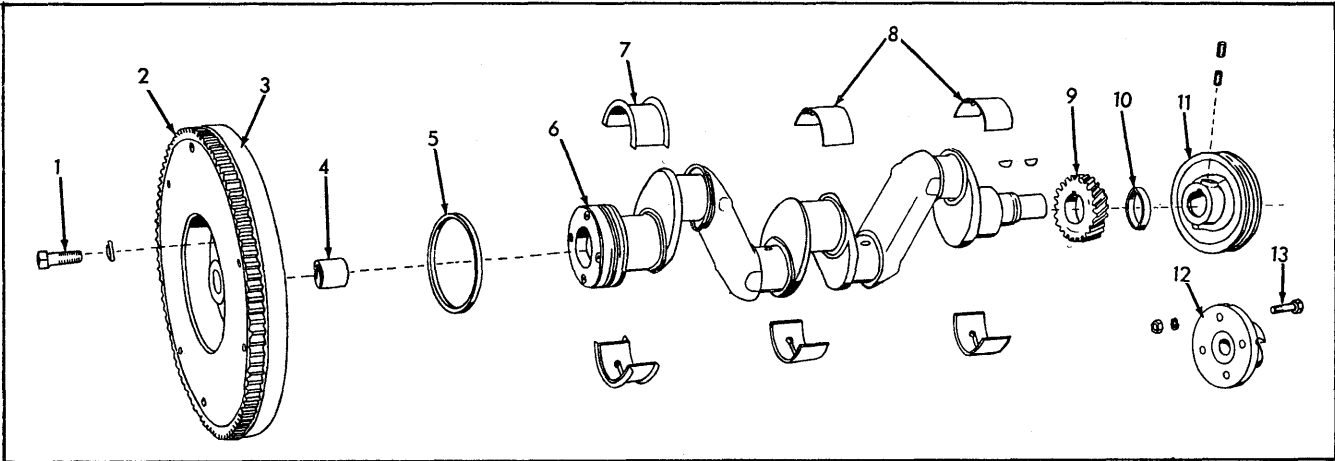
PISTON & CONNECTING ROD
Gasoline (149 Cu. In. Engine)
Used Prior to Tractor S/N 6959

ITEM	PART NUMBER	QTY.	DESCRIPTION	ASSEMBLY OR PACKAGE NO.
1	225672	8	NUT, bearing cap bolt 1 914393 NUT, lock	
2	0237802-4	4	BEARING, conn. rod, std. (2 halves) (Replaces 228486)	
	0237814-9	4	BEARING, conn. rod, .001" U/S (2-halves) (Replaces 228638)	
	0237815-6	4	BEARING, conn. rod, .0025" U/S (2-halves) (Replaces 232161)	
3	235787	8	BOLT, bearing cap (Supersedes 225671)	
4	207441	4	PIN, piston	
5	229739	4	PISTON ASSY., 7.5:1 ratio, gasoline (Incl. item 4).	284393
6	227566	4	RING, channel oil, piston	284393, 0230092-9
	230200	4	RING, oil (Chrome)	230092
7	230198	4	RING, compression, third (Chrome)	230092
8	230197	4	RING, compression, top (Chrome)	230092
9	227564	12	RING, compression.	284393, 230092, 0230092-9
10	230199	4	EXPANDER, third (Chrome).	230092
11	227562	4	LINER, cylinder	284393
12	227563	8	RING, packing, cylinder liner	284393
13	207534	4	CAPSCREW, clamping, piston pin	284393
		4	904206 LOCKWASHER	
14	235788	4	ROD ASSY., connecting (Incl. items 1 & 3) (Supersedes 227557)	



PISTON & CONNECTING ROD
Gasoline (160 cu. in. Engine)
Eff. w/tr. S/N 6959 & up

ITEM	PART NUMBER	QTY.	DESCRIPTION	ASSEMBLY OR PACKAGE NO.
1	225672	8	NUT, bearing cap bolt 1 914393 NUT, lock, pltd., 3/8"	
2	235787	8	BOLT, bearing cap	
3	237631	4	ROD ASSY., connecting (Incl. items 1, 2 & 12)	
4	4514586	8	LOCK, piston pin285335
5	237644	4	PISTON ASSY., 8:1 ratio, gasoline (Incl. item 9)285335
6	237650	4	RING, channel oil, piston285335
7	237649	8	RING, compression, second & third..285335
8	237648	4	RING, compression, top285335
9	237645	4	PIN, piston	
10	237646	4	LINER, cylinder.285335
11	237647	8	RING, packing, cylinder liner285335
12	4507127	4	BUSHING, piston pin	
13	237802	4	BEARING, conn. rod, std. (2 halves)240921
	237814	4	BEARING, conn. rod, .001" U/S (2 halves)	
	237815	4	BEARING, conn. rod, .0025" U/S (2 halves)	
14	237648	4	RING, top compression248293
15	237649	4	RING, 2nd compression248293
16	248435	4	RING, 3rd compression248293
17	248436	4	EXPANDER, 3rd compression248293
18	237650	4	RING, oil control248293



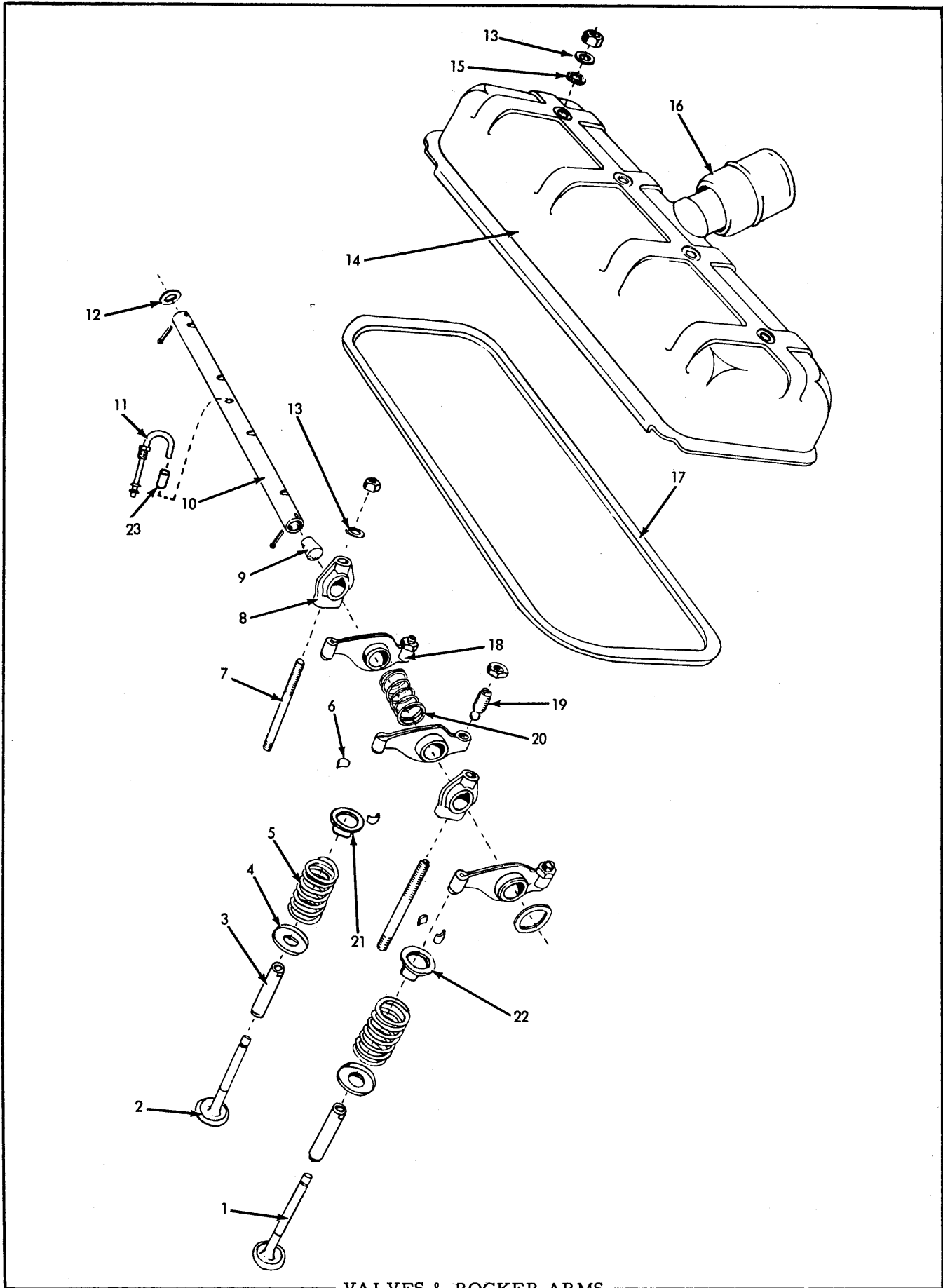
CRANKSHAFT & FLYWHEEL
Gasoline

ITEM	PART NUMBER	QTY.	DESCRIPTION	ASSEMBLY OR PACKAGE NO.
1	210151	4	CAPSCREW, flysheel 4 904207 LOCKWASHER	
2	233196	1	GEAR, ring, 116T	
3	237065	1	FLYWHEEL ASSY., (Incl. items 2 & 4)(Eff. w/Tractor S/N 6959 & up)	
	233197	1	FLYWHEEL ASSY., (Incl. items 2 & 4)(Used prior to Tractor S/N 6959)	
4	228188	1	BUSHING, clutch shaft	
5	227572	1	SEAL, crankshaft, rear.	0255324-6, 0255326-1
6	-----	1	CRANKSHAFT KIT, std. (Used prior to Tractor. . . S/N 6959)	0240921-7
	-----	1	CRANKSHAFT KIT, std. (Eff. w/Tractor S/N. . . 6959 & up)	240921
7	237831	1	BEARING, main, rear, std. (2 halves)	0240921-7
	237827	1	BEARING, main, rear, .001" U/S (2 halves)	
	237829	1	BEARING, main, rear, .0025" U/S (2 halves)	
8	237830	1	BEARING, main, front & center std. (2 halves) . .	0240921-7
	237823	1	BEARING, main, front & center .001" (2 halves)	
	237825	1	BEARING, main, front & center .0025" (2 halves)	
9	227552	1	GEAR, crankshaft. 1 910184 KEY, woodruff.	0240921-7 0240921-7

Continued

CRANKSHAFT & FLYWHEEL (Cont'd)
Gasoline

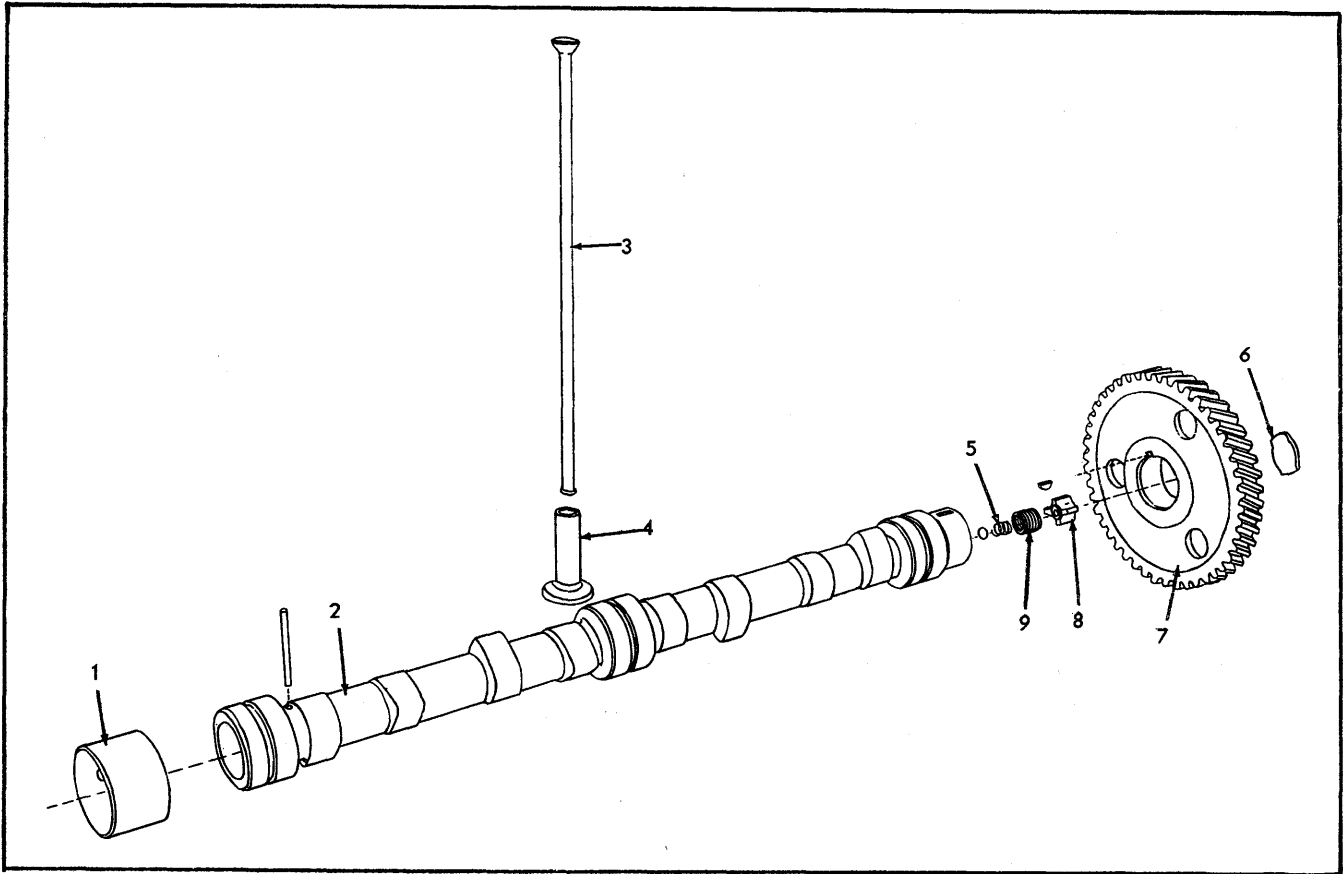
ITEM	PART NUMBER	QTY.	DESCRIPTION	ASSEMBLY OR PACKAGE NO.
10	226620	1	SEAL, crankshaft, front	0255324-6, 0255326-1
11	235043	1	PULLEY, crankshaft	
		1	919774 KEY, woodruff	
		2	902870 SETSCREW	
12	237192	1	ADAPTER, crank (f/front mounted pump)	
13	230717	4	CAPSCREW, crank adapter	
		1	904207 LOCKWASHER	
		1	911042 NUT	



VALVES & ROCKER ARMS

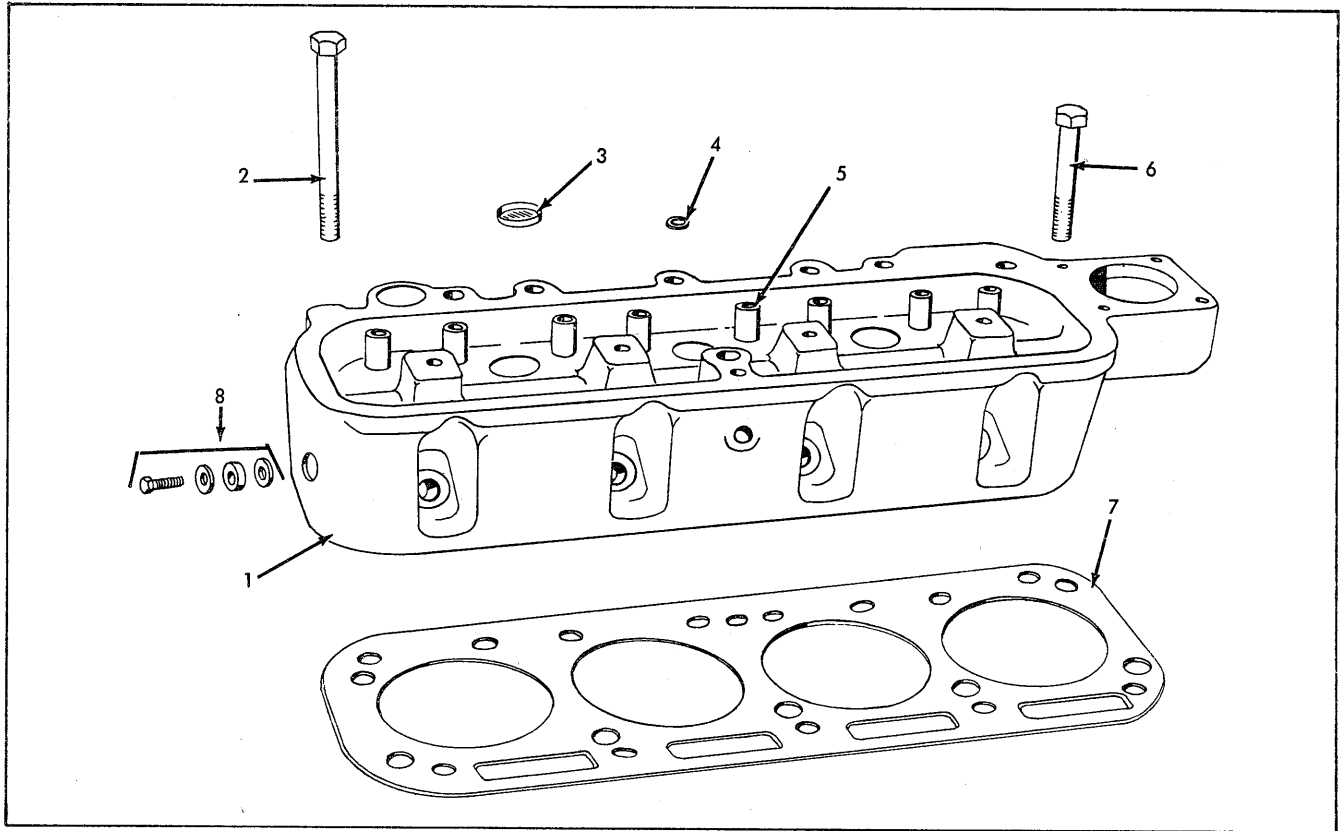
VALVES & ROCKER ARMS
Gasoline

ITEM	PART NUMBER	QTY.	DESCRIPTION	ASSEMBLY OR PACKAGE NO.
1	228589	4	VALVE, exhaust	
2	234829	4	VALVE, intake (Supersedes 231672)	
3	234824	8	GUIDE, intake & exhaust valve (Supersedes 226000)	
4	218124	8	SEAT, valve spring	
5	233850	8	SPRING, valve	
6	206880	16	LOCK, spring retainer (half)	
7	224733	4	STUD, rocker arm support 1 910123 NUT	
8	239791	4	SUPPORT, rocker arm shaft (Supersedes 227627)	
9	212004	2	STOPPER, rocker arm shaft, cork	
10	228536	1	SHAFT ASSY., rocker arm (Incl. Item 9 & C-PINS) 2 900808 PIN, cotter	
11	227636	1	TUBE, oil, rocker arm shaft 1 913526 NUT	
12	203009	2	WASHER, rocker arm shaft	
13	911115	8	WASHER, support stud	
14	228770	1	COVER, rocker arm	
15	226477	4	PACKING, cover stud	0255326-1, 0255325-3
16	203196	1	CAP, breather	
17	0255296-6	1	GASKET, rocker arm cover (Replaces 232334)	0255326-1, 0255325-3
18	{ 234781	4	ARM ASSY., rocker, L.H. (Incl. Item 19 & NUT) (Supersedes 228520)	
	{ 234780	4	ARM ASSY., rocker, R.H. (Incl. Item 19 & NUT) (Supersedes 228521)	
19	206888	8	SCREW, rocker arm adjusting 1 912795 NUT	
20	203011	3	SPRING, rocker arm spacing	
21	206881	4	RETAINER, valve spring, intake	
22	224926	4	ROTO-CAP, exhaust valve	
23	237637	1	SLEEVE, rocker arm oil tube	



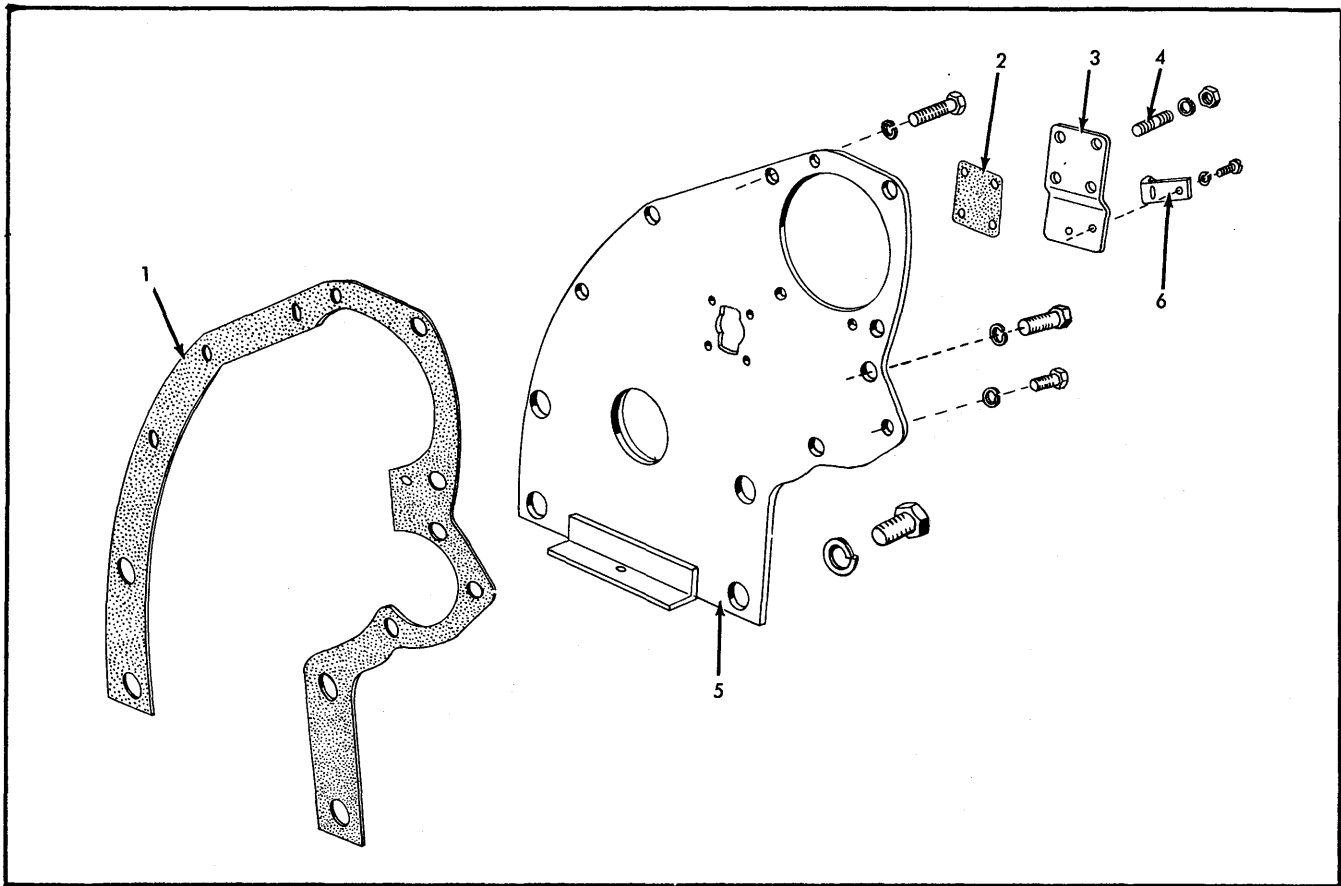
CAMSHAFT
Gasoline

ITEM	PART NUMBER	QTY.	DESCRIPTION	ASSEMBLY OR PACKAGE NO.
1	209130	2	BUSHING, camshaft, front & rear, std.	
	233528	1	BUSHING, camshaft, center, std.	
2	233454	1	CAMSHAFT, engine 1 910946 PIN, plain	
3	227633	8	ROD, push	
4	206890	8	TAPPET, valve	
5	231529	1	SPRING, oil relief valve 1 905365 BALL, steel	
6	228158	1	PLATE, thrust	
7	207422	1	GEAR, camshaft 1 910184 KEY, woodruff	
8	229592	1	PLUNGER, thrust (Used prior to Tr. S/N 6959)	
	242192	1	PLUNGER, thrust (Eff. w/ Tr. S/N 6959 & up)	
9	248970	1	SPRING, thrust	



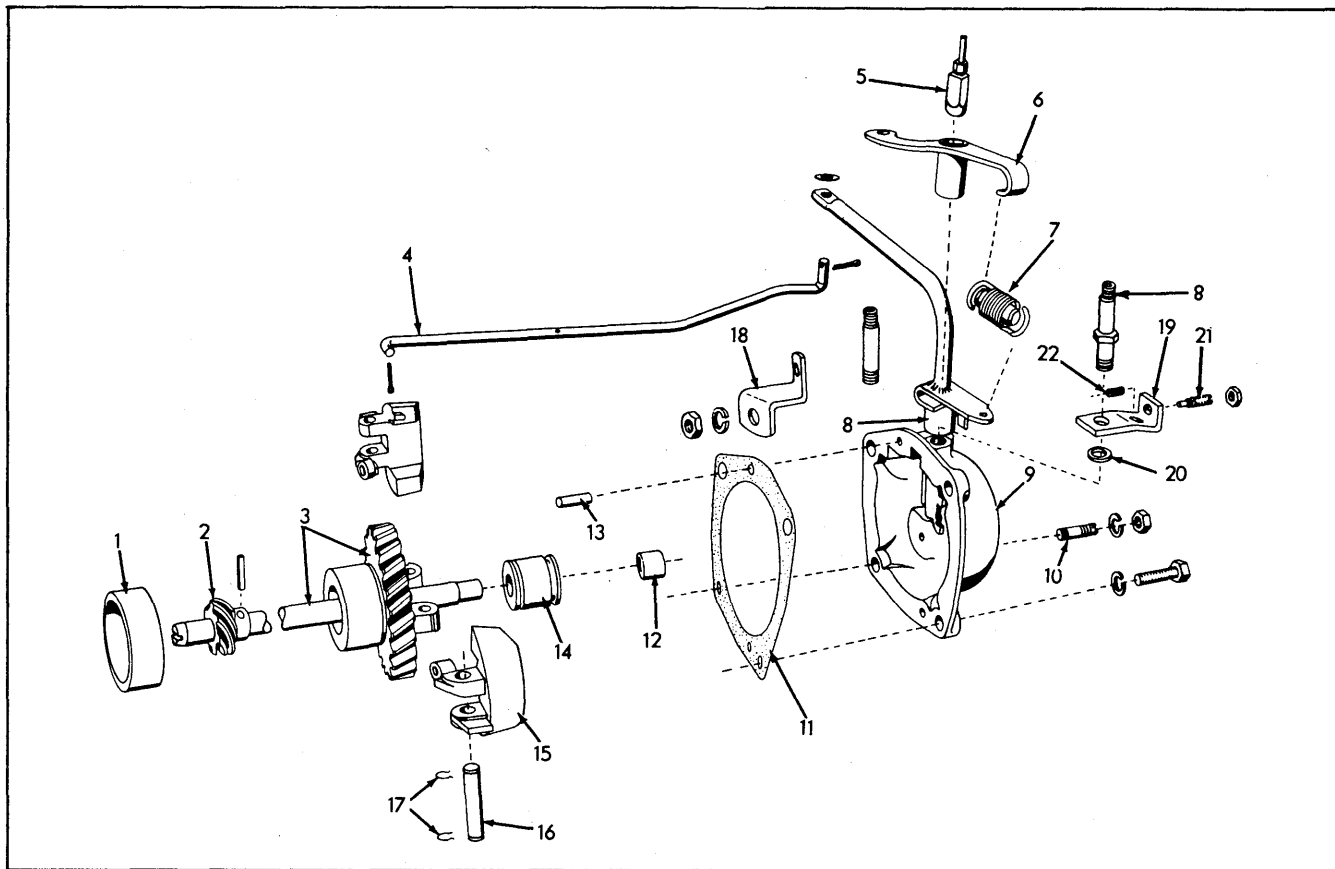
CYLINDER HEAD
Gasoline

ITEM	PART NUMBER	QTY.	DESCRIPTION	ASSEMBLY OR PACKAGE NO.
1	241591	1	HEAD ASSY., cyl. (Incl. items 3 & 5)(Eff. w/Tr. S/N 6959 & up)	
	233705	1	HEAD ASSY., cyl. (Incl. items 3 & 5)(Used prior to Tr S/N 6959)	
2	231993	8	CAPSCREW, cyl. head, long (Use prior to Tr. S/N 6959)	
	237833	7	CAPSCREW, (Eff. w/Tr. S/N 6959 & up)	
	922477	1	CAPSCREW, cyl. head, long (Eff. w/Tr. S/N 6959 & up)	
3	230318	3	PLUG, core hole	
4	229754	1	WASHER, cyl. head cap screw	
5	234824	8	GUIDE, valve (Supersedes 226000)	
6	231992	4	CAPSCREW, cyl. head, short (Prior to Tr. S/N 6959)	
	922478	4	CAPSCREW, cyl. head, short (Eff. w/Tr. S/N 6959)	
7	227577	1	GASKET, cyl, head (Prior to Tr. S/N 6959)	0255326-1, 0255325-3
	237642	1	GASKET, cyl. head (Eff. w/Tr. S/N 6959).	0255324-6, 0255323-8
8	233155	1	PLUG ASSY., cleanout (Not required on later models)	



TIMING GEAR COVER
Gasoline

ITEM	PART NUMBER	QTY.	DESCRIPTION	ASSEMBLY OR PACKAGE NO.
1	233204	1	GASKET, timing gear cover	0255326-1
2	248969	1	GASKET, thrust cover	0255326-1
3	235044	1	COVER, thrust, camshaft	
4	218288	4	STUD, thrust plate cover	
		4	904204 LOCKWASHER	
		4	911040 NUT	
5	232322	1	COVER ASSY., timing gear	
		4	913828 CAPSCREW (lower)	
		4	904209 LOCKWASHER (lower)	
		3	915809 CAPSCREW (center)	
		3	904205 LOCKWASHER (center)	
6	235045	1	POINTER, timing	
		2	912731 SCREW, machine	
		2	912739 LOCKWASHER	



GOVERNOR
Gasoline

ITEM	PART NUMBER	QTY.	DESCRIPTION	ASSEMBLY OR PACKAGE NO.
1	210689	1	BUSHING, governor gear	
2	225353	1	GEAR, drive, distributor, 6T 1 915796 PIN	
3	228136	1	SHAFT ASSY., governor (Incl. GEAR)	
4	211948	1	LINK, carburetor 1 911114 WASHER, plain (front) 2 900970 PIN, cotter	
5	228138	1	TEE, oil tube (Incl. 2 SLEEVES & NUTS) 2 911841 SLEEVE 2 912589 NUT	
6	232338	1	LEVER ASSY., control rod (Supersedes 212318)	
7	234449	1	SPRING, governor, (1650 RPM) (Incl. PLUNGER) (Used prior to Tr. S/N H3-8694)	
	223569	1	SPRING, governor, (1800 RPM) (Eff. w/Tr. S/N H3-8694)	
8	234109	1	PIN, pivot, control rod lever	
9	234107	1	HOUSING ASSY., governor (Incl. SPRING LEVER, CROSS SHAFT COLLAR, CROSS SHAFT BUSHING, CROSS SHAFT, FORK & Item 13) 3 905662 CAPSCREW 3 904205 LOCKWASHER	

Continued