



# **PARTS CATALOG**

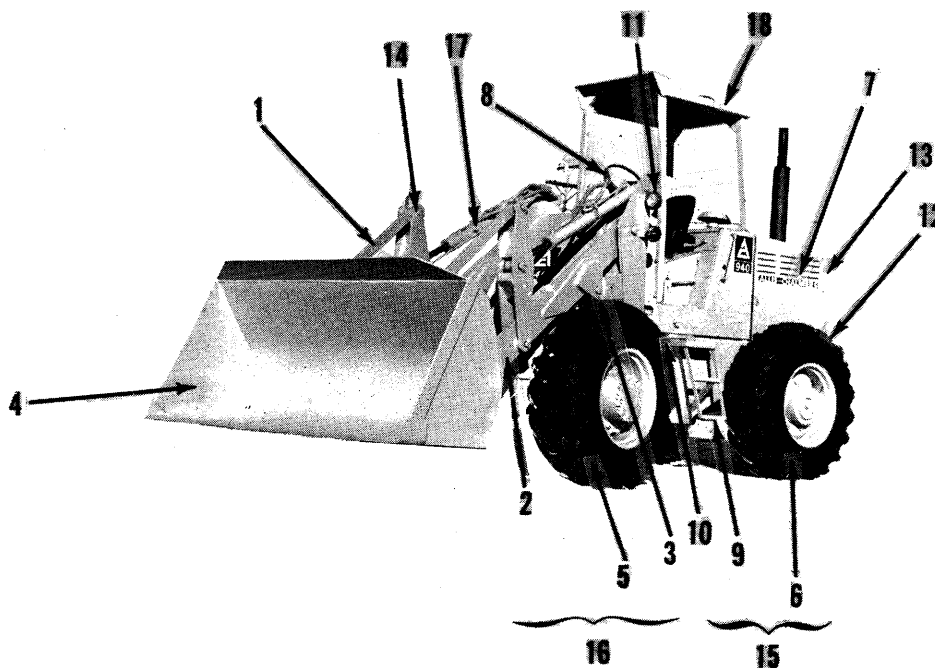
## **940 ARTICULATED WHEEL LOADER**

Litho U.S.A.

FORM 9005001  
Dec., 1976

Replaces Form 1012409

## GENERAL DESCRIPTION



- |                       |                                       |
|-----------------------|---------------------------------------|
| 1. DUMP LINK          | 10. ARTICULATION JOINT AREA           |
| 2. BOOM               | 11. LIGHTS                            |
| 3. LIFT CYLINDER      | 12. BATTERY COMPARTMENTS (BOTH SIDES) |
| 4. BUCKET             | 13. HINGED HOOD (ENGINE COMPARTMENT)  |
| 5. FRONT TIRE         | 14. CROSS LINK                        |
| 6. REAR TIRE          | 15. POWER UNIT (SECTION)              |
| 7. ENGINE             | 16. TOOL UNIT (SECTION)               |
| 8. INSTRUMENT PANEL   | 17. DUMP CYLINDER                     |
| 9. SAFETY BAR STORAGE | 18. CANOPY                            |

## FOREWORD

### ALPHABETICAL INDEX

The alphabetical index is located at the front of this catalog. It is used to locate major groups, assemblies and components.

### NUMERICAL INDEX

The numerical index is located at the end of this catalog and indicated on which page or pages a part number appears.

### ILLUSTRATIONS

All illustrations are located on the left hand page with the text on the right. Except for some common hardware, all parts are identified with an item number which corresponds to the "item" column on the text page. This is followed by the part number, quantity and description.

### HARDWARE

Common hardware not identified such as bolts, nuts, cotter pins and lube fittings, are listed indented in the text beneath the item which they attach or fit into. Common hardware listed indented beneath an item is NOT included unless specified. Example: (Incl. BOLT, LOCKWASHER & NUT).

### ORDERING PARTS

Be sure to refer to both the text and the illustration to assure ordering the correct part.

INDEX

AIR INTAKE & EXHAUST .....	16, 32, 34	ENGINE.....	6
	36	Crankshaft .....	12
Air Cleaner Assembly .....	46	Bearings .....	12
Air Cleaner Group .....	46	Gears .....	12
Heater Element .....	32	Pulley .....	12
Manifold		Cylinder Block .....	6
Exhaust .....	16	Engine Assembly .....	6
Intake .....	16	Cylinder Head .....	8
Muffler .....	32	Cover .....	8
ALPHABETICAL INDEX .....	3	Cover, end .....	8
ASSEMBLIES & PACKAGED PARTS .....	218	Valve	
ATTACHMENTS		Exhaust .....	8
Bucket Assembly, 4 In 1 .....	210	Intake .....	8
Bucket Cylinder Assembly .....	212	Front Plate & Gear Cover .....	22
Buckets, Loader .....	180	Flywheel .....	20
Bucket Tooth Group .....	180	Gear, ring .....	20
Cutting Edges .....	180	Flywheel Housing .....	20
Ribs & Skids .....	180	Cover, timing hole .....	20
Cab Assembly .....	182	Idler Gear Assembly .....	22
Canopy Group .....	190	Lubricating System	
Heater Assembly .....	186	Filter, lube oil .....	14
Heater Group .....	188	Manifold .....	14
Rear Window Wiper Group .....	192	Sending Unit, engine .....	14
Wiper Motor Assembly .....	186	Switch, pressure .....	14
Fender Group .....	168	Oil Pan & Oil Pump .....	18
Hydraulic Group, Third Spool .....	214, 216	Gear, drive .....	18
Lock Assembly .....	170	Shaft & Gear Assy.	
Moldboard, Rear View, 4 In 1 .....	210	Drive .....	18
Position Indicator, 4 In 1 .....	216	Idler .....	18
Third Spool Control, 4 In 1 .....	214, 216	Oil Cooling Group .....	30
Third Spool Control Valve Group 4 In 1 .....	212	Sending Unit, temperature .....	30
COOLING SYSTEMS .....	28	Piston & Connecting Rod .....	12
Water Pump, Fan & Radiator .....	28	Bearings .....	12
Blade, fan .....	28	Ring Set .....	12
Belt Set .....	28	Rocker Arm Group .....	10
Impeller .....	28	Camshaft .....	10
Pulley .....	28	Gear, camshaft .....	10
ELECTRICAL SYSTEM .....	194	Lifter, valve .....	10
Alternator .....	204	Rocker Arm .....	10
Battery Group .....	194	Turbocharger Assembly .....	34
Cables .....	194	Turbocharger Group .....	32
Sheave, alternator .....	194	FUEL SYSTEMS .....	24 to 160
Instrument Panel .....	206	Electric Shut-Off Group .....	48
Fuse Block & Fuses .....	206	Filter Assembly, fuel .....	26
Gauges .....	206	Elements	
Hour Meter .....	206	Fuel Filter .....	24, 26
Jumper Wires .....	206	Water Separator .....	24, 26
Switches .....	206	Filters, fuel .....	24
Wiring Harnesses .....	206	Pump, hand primer .....	24, 26
Lamp Assembly		Fuel Tank Group .....	160
Road Light .....	208	Sending Unit Assy. .....	160
Warning .....	208	Shut-Off Valve .....	160
Starting Motors .....	194, 200, 202	Injection Nozzle & Lines .....	36
Wire Group .....	196, 198	Injection Pump Components	
Cables .....	198	Housing & Drive .....	40, 42
Circuit Breaker .....	198	Transfer Pump, Head & Rotor .....	44
Harnesses, wire .....	196, 198	Nozzle Holder Assembly .....	36
Horn .....	198		
Relay .....	196		
Switch, magnetic .....	196		

INDEX

FUEL SYSTEMS (continued)

Pump, hand primer .....	24, 26
Throttle Linkage .....	38
Pedal, accelerator .....	38

HYDRAULICS

Control Assembly, hydraulic .....	134 to 156
Control Assembly, hydraulic .....	152
Power Steering	
Auxiliary Pump & Motor Assy. ....	144
Control Valve .....	146
Cylinder, ram Assy. ....	146
Flow Divider, hydraulic .....	156
Lines, hydraulic .....	140, 142
Pump, hydraulic .....	156
Reservoir Group, Hydraulic, platform .....	150
Element, filter .....	150
Valve Assy., relief .....	150

NUMERICAL INDEX

223

POWER MODULE GROUP

Fender Group .....	162
Hood Group .....	168
Ladder Group .....	164
Lock Assembly .....	162
Platform Assembly .....	170
Power Frame Group .....	170
Rear Hood Support Group .....	166
Seat Group .....	162
Seat Group .....	164

POWER TRAIN GROUP

Axle Assemblies .....	74, 82, 90, 98, 106, 114, 122
Axle Housing .....	74, 82, 90, 98, 106, 114, 122
Brake Parts .....	80, 88, 96, 104, 112, 120, 128
Differential Assembly .....	76, 84, 92, 100, 108, 116, 124
Shaft & Hub	
Power Axle .....	78, 86, 94
Tool Axle .....	102, 110, 118, 126
Wheel Cylinder Assembly .....	130
Wheel Group .....	130
Brake Group .....	138
Cut-Off Valve, clutch .....	138
Master Cylinder Assy. ....	136, 138
Pedal, brake .....	138
Power Cylinder Assy. ....	134, 138
Switch, stop light .....	138
Brake Line Group	
Front .....	132
Rear .....	132
Clutch Cut-Off Valve Assy. ....	138
Drive Shaft Group .....	72
Drive Shaft Assy. Parts	
Front Section .....	72
Rear Section .....	72
Transmission .....	48
Control Valve Assembly .....	64
Converter Assembly .....	52
Converter Group .....	50
Forward & 3rd Clutch .....	58
Forward & 3rd Clutch Gears .....	58
Gear Shift Linkage .....	66
Hydraulic Piston Housing .....	64

POWER TRAIN GROUP (continued)

Low Speed Clutch .....	62
Low Speed Clutch Gear .....	62
Parking Brake .....	70
Parking Brake Assy. ....	70
Pressure Regulator, Charging Pump & Oil Filter Group .....	68
Reverse & 2nd Clutch .....	60
Reverse & 2nd Clutch Gears .....	60
Transmission Case & Cover Group ..	54
Transmission Case Group .....	56

TOOL MODULE GROUP, LOADER

148 to 178

Buckets, loader .....	178
Lift Arm Group .....	174
Bucket Lever Assy. ....	174
Bucket Link Assy. ....	174
Cylinders	
Dump .....	174, 176
Lift .....	174, 178
Loader Hydraulics .....	148
Loader Control Valve .....	148, 154
Pump Assy., hydraulic .....	148, 158
Tool Module Group, front .....	172
Lights	
Flasher .....	172
Road .....	172
Seat, spring .....	172
Wire Harness .....	172

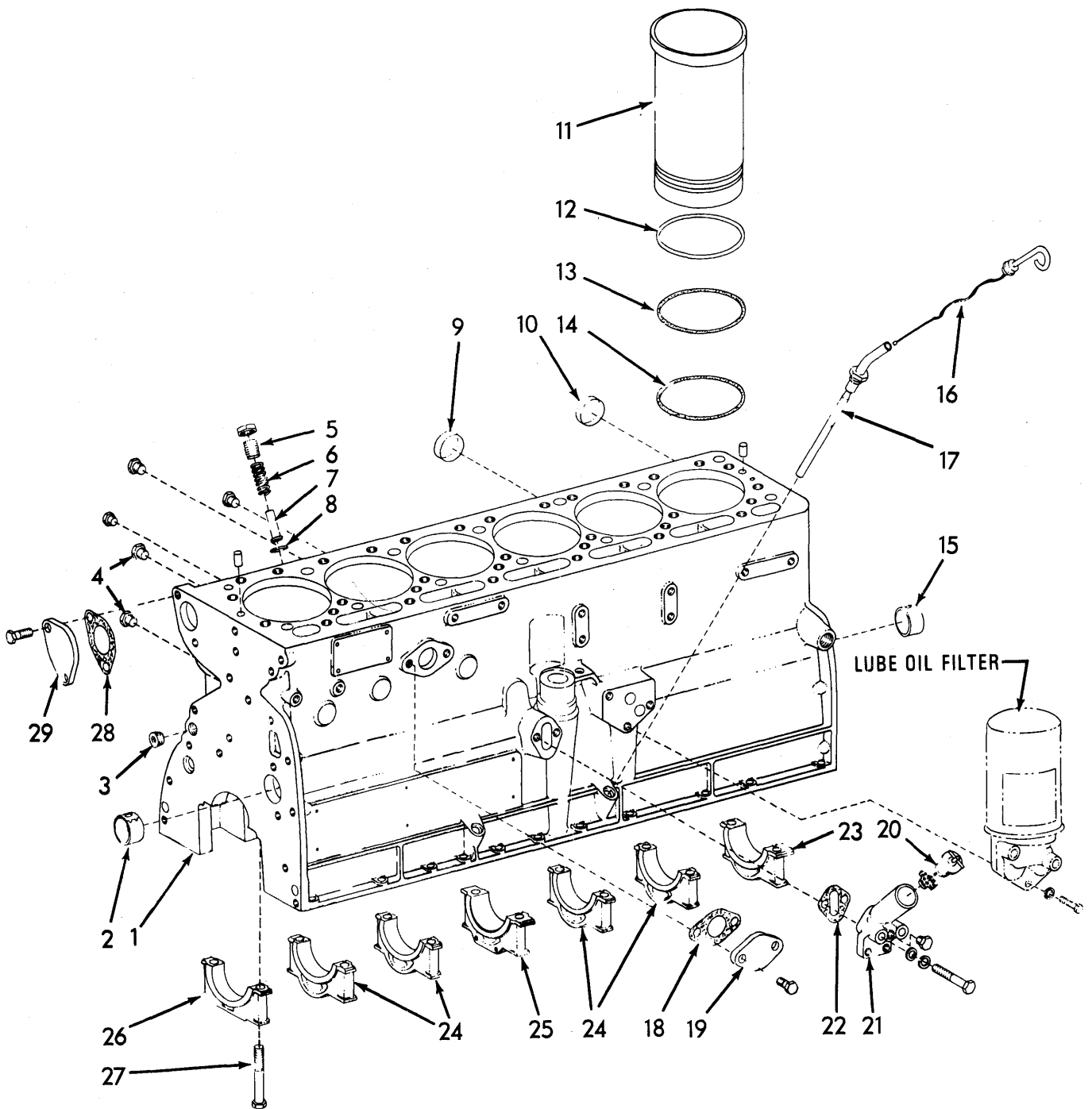
MEMO

"ALWAYS GIVE MODEL AND SERIAL NUMBER WHEN ORDERING PARTS"

## CYLINDER BLOCK

ITEM	NUMBER	QTY	DESCRIPTION
1	4024514	1	BLOCK ASSY., cylinder (Prior S/N 2D-92741)
	4006957	1	BLOCK ASSY., cylinder (Eff. S/N 2D-92741)
	1	0912415-7	Cock, drain
	2	0917547-2	Pin, dowel
	2	0917673-6	Plug, pipe
	2	0918850-9	Plug, pipe
	2	4362338-8	Plug, pipe, oil gallery
	1	0917970-6	Plug, pipe
	1	4254452-8	Plug, expansion
2	4025025-0	1	BEARING, camshaft, front (st'd.)
	4025259-5	1	BEARING, camshaft, front (.010" Undersize)
3	4025392-4	1	PLUG, pipe, restrictor, 1/2"
4	4255492-3	2	PLUG, pipe
5	4022129-3	1	SCREW, oil pressure regulating
6	4500231-8	1	SPRING, oil pressure regulating valve
7	4507374-9	1	PISTON, oil pressure regulating valve
8	4507673-4	1	INSERT, oil pressure regulating valve
9	4255110-1	1	PLUG, expansion
10	4255107-7	1	PLUG, expansion
11	4061522	6	SLEEVE KIT, cylinder (Incl. Items 12 - 14)
12	4020537-9	*	SHIM, cylinder sleeve (.005" thick)
	4020538-7	*	SHIM, cylinder sleeve (.010" thick)
	4020539-5	*	SHIM, cylinder sleeve (.015" thick)
	4020540-3	*	SHIM, cylinder sleeve (.020" thick)
	* Use As Required		
13	4023827-1	6	O-RING, cylinder sleeve (top)
14	4020032-1	6	O-RING, cylinder sleeve (lower)
15	4025238-9	3	BEARING, camshaft, intermediate & rear (st'd.)
	4025258-7	3	BEARING, camshaft, intermediate & rear (.010 undersize)
16	4024704-1	1	GAUGE, oil level
17	4023877-6	1	ADAPTOR, oil level gauge
18	4025021-9	1	GASKET, cover plate
19	4026382-4	1	PLATE, cover
	2	916269	Capscrew
	2	910287	Lockwasher
20	4024097-0	1	CLOSURE ASSY., oil filler (incl. chain)
21	4023455-1	1	ELBOW, oil filler
	2	916281	Capscrew
	1	919840	Plug, pipe
	2	0912369-6	Washer, plain
22	4025019-3	1	GASKET, oil filler elbow
23	4023889	1	CAP, rear main bearing **
24	4023887	4	CAP, intermediate main bearing **
25	4023536	1	CAP, center main bearing **
26	4023508	1	CAP, front main bearing **
	** Replacement bearing caps are semi-finished and must be line bored after installing		
27	4020135-2	14	CAPSCREW, main bearing cap
28	4023816-4	1	GASKET, water outlet cover plate
29	4023532-7	1	PLATE, cover, water outlet
	2	4255723-1	Capscrew, self-locking
-	4024107-7	-	KIT, gasket, intermediate
-	4061522	-	KIT, sleeve
-	4061533	-	KIT, sleeve
-	4024449-3	-	ENGINE ASSY., replacement

CYLINDER BLOCK

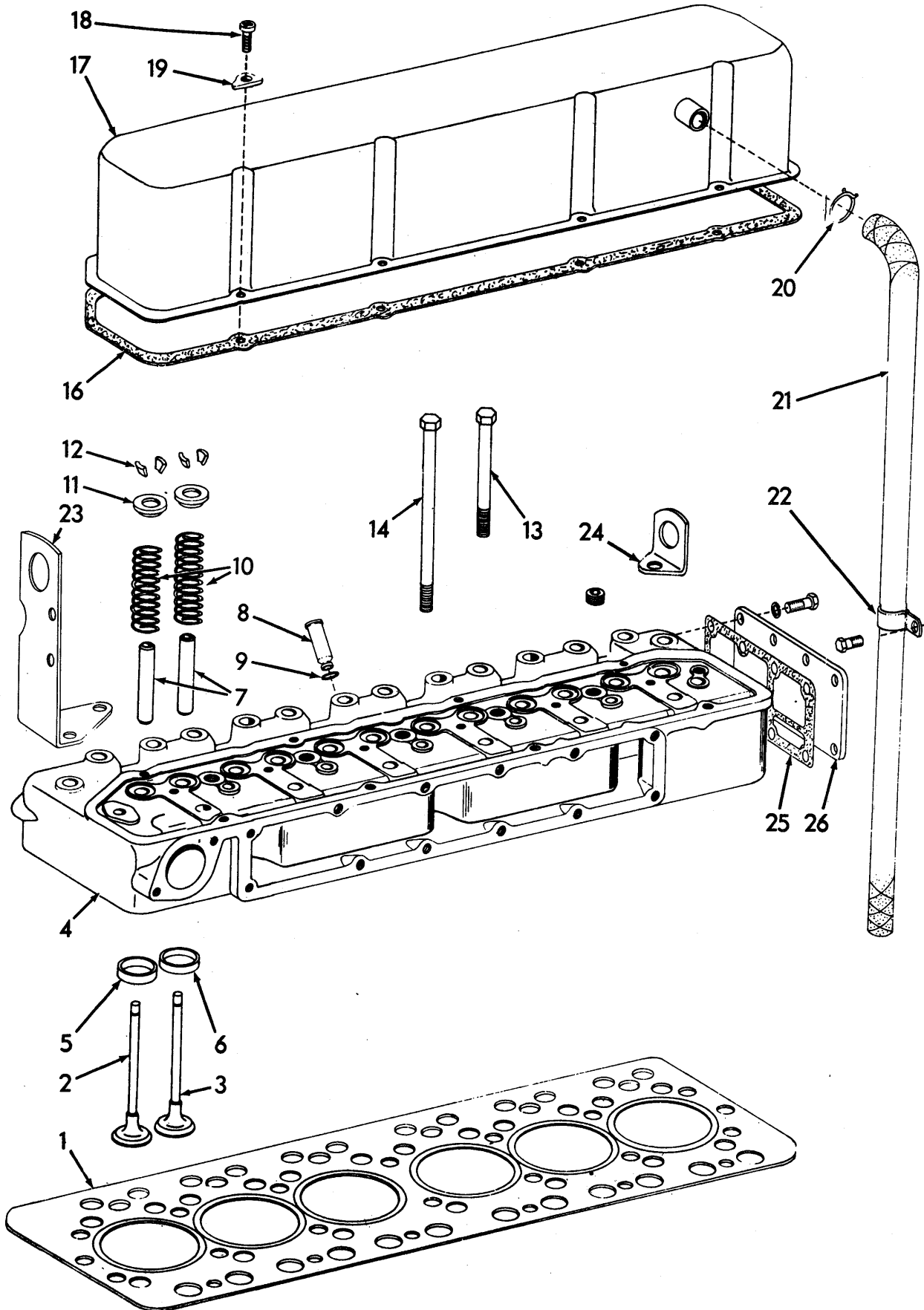




## CYLINDER HEAD

ITEM	NUMBER	QTY	DESCRIPTION
1	4023814-9	1	GASKET, cylinder head
2	4023379-3	6	VALVE, exhaust (Prior S/N 2D-90967)
	4007148	6	VALVE, exhaust (Eff. S/N 2D-90967)
3	4023378-5	6	VALVE, intake
4	4006934	1	HEAD ASSY., cylinder (Incls. Plugs & Items 5 thru 9)
	5 0928879-6		Plug, pipe
	1 4255577		Plug, pipe, 3/4
5	4023380-1	6	INSERT, exhaust valve seat, st'd.
	4023384-3	6	INSERT, exhaust valve seat (.005" oversize)
6	4023382-7	6	INSERT, intake valve seat, st'd.
	4020147-7	6	INSERT, intake valve seat (.005" oversize)
7	4022595-5	12	GUIDE, intake & exhaust valve
8	4023474-2	6	SLEEVE, injection nozzle
9	0928953-9	12	O-RING, injection nozzle sleeve
10	4020156-8	12	SPRING, intake & exhaust valve (Under S/N 2D-81148)
	4035186	12	SPRING, intake & exhaust valve (S/N 2D-81148 & up)
11	4020408-3	12	RETAINER, valve spring
12	4376497-6	24	LOCK, half, valve spring retainer
13	4029256-7	21	CAPSCREW, cylinder head (short) (Prior S/N 2D-87766)
	4035388	21	CAPSCREW, cylinder head (short) (Eff. S/N 2D-87766)
14	4029257	6	CAPSCREW, cylinder head (Also attaches Rocker Arm Brackets (Under S/N 2D-56350)
	4029257-5	6	CAPSCREW, cylinder head (S/N 2D-56350 to 2D-87766)
	4035389	6	CAPSCREW, cylinder head (Eff. S/N 2D-87766)
16	4020076-8	1	GASKET, cylinder head cover
17	4023921-2	1	COVER, cylinder head
	4006936	1	COVER, cylinder head
18	4153776-2	8	SCREW, cylinder head cover
19	4025491-4	8	WASHER, cylinder head cover
20	921911	1	CLAMP, hose
21	4024090-5	1	HOSE, breather
22	0926179-3	1	CLAMP, breather tube
	1 916268		Capscrew
	1 910287		Lockwasher
23	4023975-8	1	EYE, lifting (front)
24	4023913-9	1	EYE, lifting (rear)
25	4023471-8	1	GASKET, end cover
26	4023470-0	1	COVER, end
	8 915408		Capscrew
	8 4020145-1		Washer, lock
-	4024106-9	-	GASKET KIT, head

CYLINDER HEAD

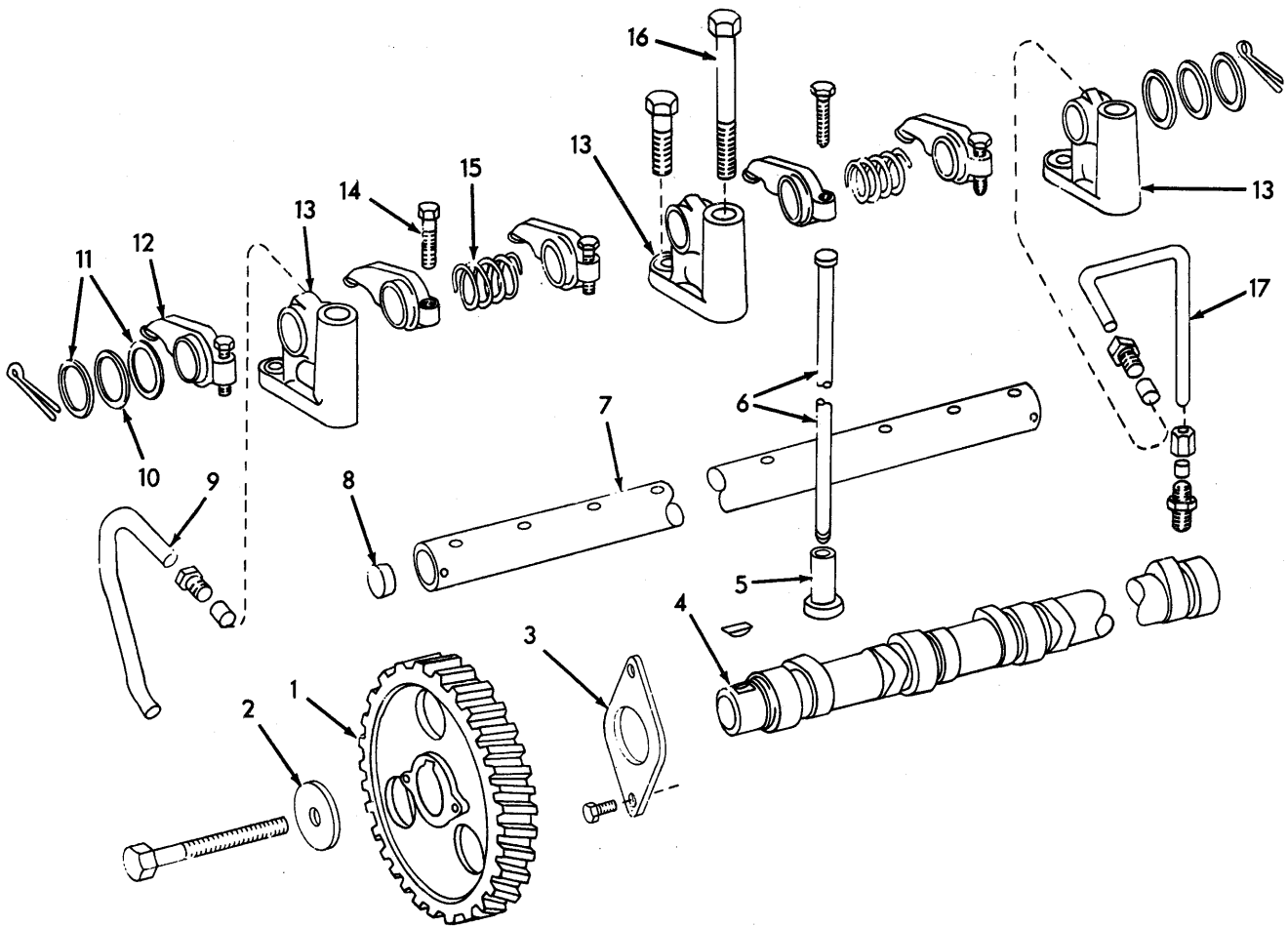


---

**ROCKER ARM GROUP**

ITEM	NUMBER	QTY	DESCRIPTION
1	4022292-9	1	GEAR, camshaft
		1	4022430-5 Key, woodruff
2	4022339-8	1	WASHER, retaining, cam gear
		1	0925821-1 Capscrew
3	4021454-6	1	PLATE, thrust
		2	4254864-4 Bolt, place
4	4022519-5	1	CAMSHAFT KIT
5	4026699-1	12	TAPPET
6	4020185-7	12	ROD, push
7	4021452-0	1	SHAFT, rocker arm
		2	0925719-7 Pin, cotter
8	4512644-8	2	STOPPER, rocker shaft
9	4020359-8	1	TUBE, oil drain
		1	0913536-9 Nut, compression
		1	0911435-6 Sleeve, compression
10	4025193-6	2	WASHER, spring (end)
11	4025194-4	4	WASHER, spacer (end)
12	4025188-6	12	ARM ASSY., rocker (incl. item 14)
13	4020143-6	6	BRACKET, rocker arm (end)
		1	919224 Capscrew
		1	910287 Lockwasher
14	4513206-5	12	SCREW, adjusting, rocker arm
15	4025191-0	5	SPRING, rocker arm spacing
16	-----	6	CAPSCREW, (see cylinder head)
17	4020683-1	1	TUBE, oil feed
		1	0911435-6 Sleeve, compression
		1	0913536-9 Nut, compression
		1	0914626-7 Connector, compression
		1	0911437-2 Nut, compression

ROCKER ARM GROUP



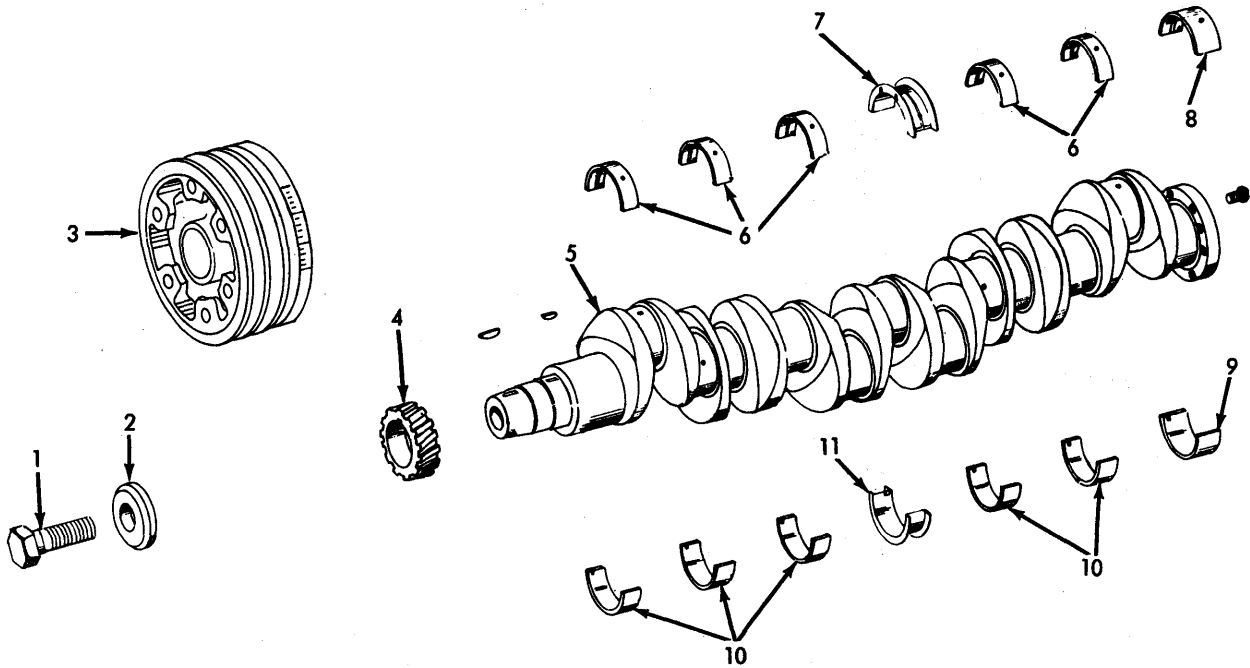
**CRANKSHAFT**

ITEM	NUMBER	QTY	DESCRIPTION
1	4020148-5	1	CAPSCREW, pulley
2	4020149-3	1	WASHER, pulley
3	4023965-9	1	PULLEY, crankshaft
			1 0905845-4 Key, woodruff
4	4023979-0	1	GEAR, crankshaft
			1 0905845-4 Key, woodruff
5	4023823-0	1	CRANKSHAFT
6	4022083-2	5	BEARING, frt. & intermed., upper (std.)
	4022095-6	5	BEARING, frt. & intermed., upper (.010)
	4022096-4	5	BEARING, frt. & intermed., upper (.020)
	4022098-0	5	BEARING, frt. & intermed., upper (.040)
7	4022087-3	1	BEARING, ctr., upper (std.)
	4022115-2	1	BEARING, ctr., upper (.010)
	4022116-0	1	BEARING, ctr., upper (.020)
	4022118-6	1	BEARING, ctr., upper (.040)
8	4022085-7	1	BEARING, rear, upper (std.)
	4022105-3	1	BEARING, rear, upper (.010)
	4022106-1	1	BEARING, rear, upper (.020)
	4022108-7	1	BEARING, rear, upper (.040)
9	4022086-5	1	BEARING, rear, lower (std.)
	4022110-3	1	BEARING, rear, lower (.010)
	4022111-1	1	BEARING, rear, lower (.020)
	4022113-7	1	BEARING, rear, lower (.040)
10	4022084-0	5	BEARING, frt. & intermed., lower (std.)
	4022100-4	5	BEARING, frt. & intermed., lower (.010)
	4022101-2	5	BEARING, frt. & intermed., lower (.020)
	4022103-8	5	BEARING, frt. & intermed., lower (.040)
11	4022088-1	1	BEARING, center, lower (std.)
	4022120-2	1	BEARING, center, lower (.010)
	4022121-0	1	BEARING, center, lower (.020)
	4022123-6	1	BEARING, center, lower (.040)
	4061429-9	1	BEARING KIT, (std.)
	4061430-7	1	BEARING KIT, (.010)
	4061431-5	1	BEARING KIT, (.020)
	4061432-3	1	BEARING KIT, (.040)

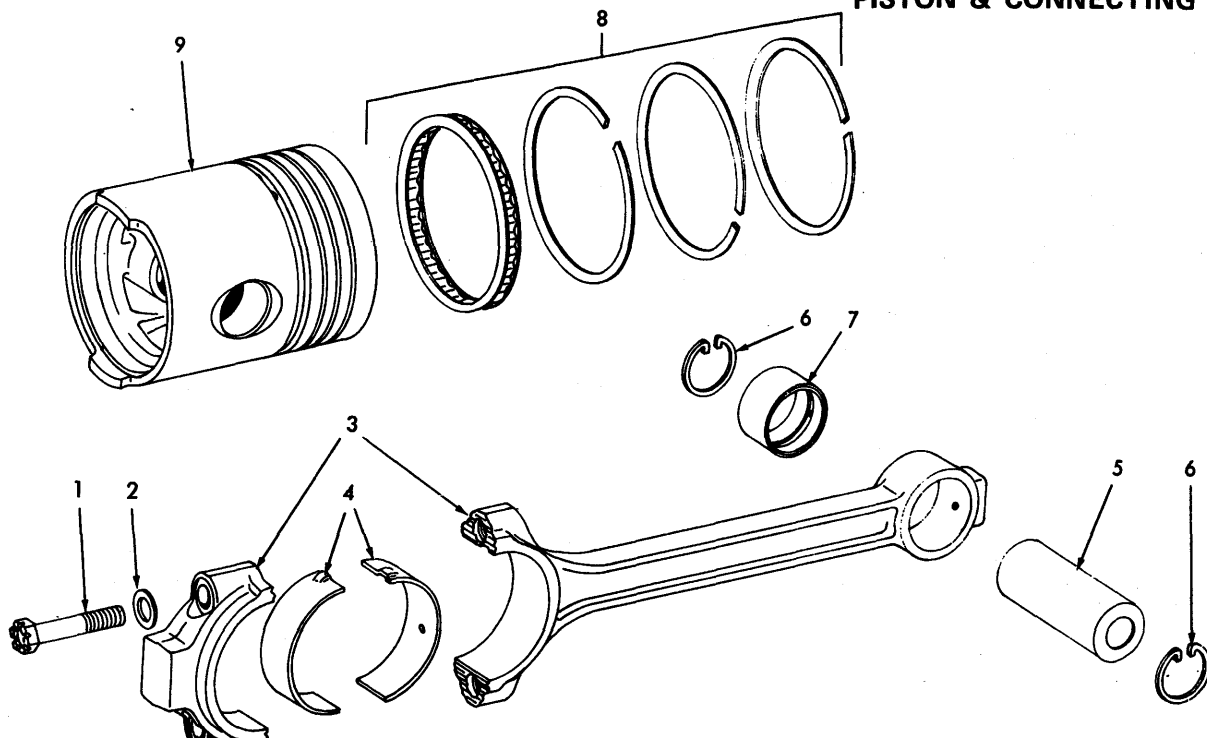
**PISTON & CONNECTING ROD**

ITEM	NUMBER	QTY	DESCRIPTION
1	4020142-8	12	CAPSCREW, connecting rod
	4024583	12	CAPSCREW, connecting rod (piston cooling)
2	4020145-1	12	WASHER, flat, connecting rod
3	4024582	6	ROD ASY., connecting (Incl. Items 1, 2 & 7)
4	4024463-4	12	BEARING, connecting rod (Std.)
	4024533-4	12	BEARING, connecting rod (.010)
	4024534-2	12	BEARING, connecting rod (.020)
	4024536-7	12	BEARING, connecting rod (.040)
5	4023970-9	6	PIN, piston
6	927693	12	RING, retaining, piston pin
7	4020049-5	6	BUSHING, connecting rod
8	4021796-0	6	RING SET, piston (Serviced only as a set)
9	4061533-8	6	PISTON KIT (Incl. Items 4, 5 & 8)
	4061794	6	PISTON KIT (piston cooling)
	4061438-0	1	KIT, connecting rod bearing (Std.)
	4061440-6	1	KIT, connecting rod bearing (.010)
	4061441-4	1	KIT, connecting rod bearing (.020)
	4061442-2	1	KIT, connecting rod bearing (.040)

CRANKSHAFT



PISTON & CONNECTING ROD



---

**THERMOSTAT & HOUSING**

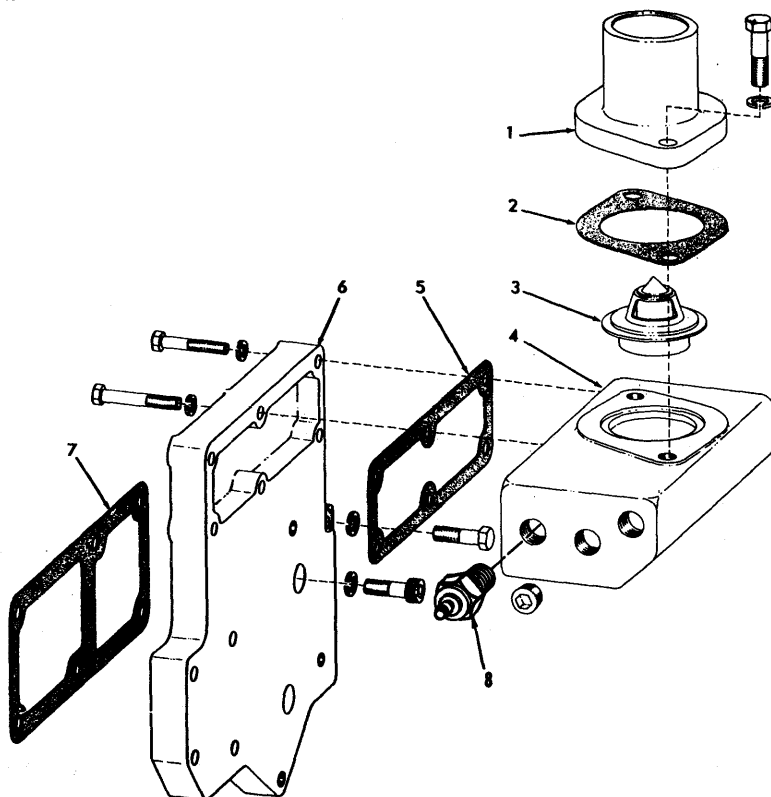
ITEM	NUMBER	QTY	DESCRIPTION
1	4006919	1	FLANGE, water outlet 2 916197 Capscrew
2	4023554-1	1	GASKET, flange, water outlet
3	4516565-1	1	THERMOSTAT
4	4023502-0	1	HOUSING, thermostat 4 916269 Capscrew 2 919785 Capscrew 6 904205 Washer, lock 1 0920416-5 Plug, pipe 1 919840 Plug, pipe 1 923519 Bushing
5	4023504-6	1	GASKET, housing, thermostat
6	4023503-8	1	PLATE, mounting, housing 2 0912267-2 Capscrew 2 919224 Capscrew 4 904205 Lockwasher
7	4023505-3	1	GASKET, mounting plate
	4006949	1	GASKET, mounting plate
8	4760149	1	SENDING UNIT, temperature
-	4024106-9	-	KIT, gasket

---

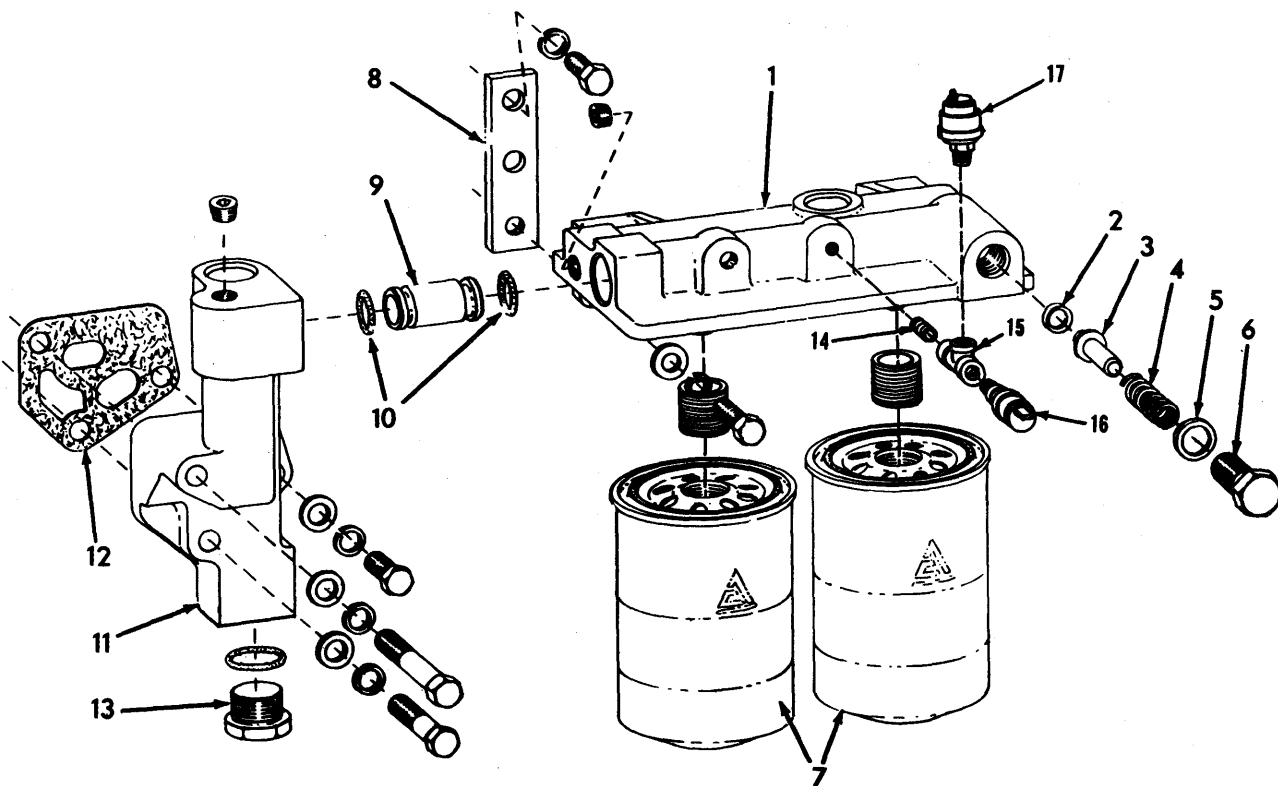
**LUBE OIL FILTER**

ITEM	NUMBER	QTY	DESCRIPTION
1	4023542-6	1	HEADER ASSY., (incl. plug & items 2 thru 6) 2 920676 Capscrew 2 914678 1 Washer, lock 2 0911997-5 Washer, plain 1 4255492-3 Plug, pipe 2 4028829-2 Nipple
2	4507673-4	1	INSERT, by-pass valve
3	4507374-9	1	VALVE, by-pass
4	4500231-8	1	SPRING, by-pass valve
5	0916777-6	1	GASKET, copper
6	4023787-7	1	CAPSCREW, hole plugging
7	4023548-3	2	FILTER, lube oil
8	4023545-9	1	BRACKET, header mounting 2 916254 Capscrew 2 914678 1 Washer, lock
9	4024471-7	1	TUBE, filler to manifold
10	0928945-5	2	O-RING, tube
11	4023967	1	MANIFOLD ASSY., (incl. plug) 1 916197 Capscrew 1 916257 Capscrew 1 926111 Capscrew 3 914678 Washer, lock 3 0914498-1 Washer, plain 1 919134 Plug, pipe 2 919228 Capscrew 1 919840 Plug, pipe
12	4023813-1	1	GASKET, manifold
13	0921204-4	1	PLUG, manifold (incl. O-Ring) 1 0921206-9 O-Ring
14	0901468-9	1	NIPPLE, pipe
15	0901702-1	1	TEE, pipe
16	0246171-3	1	SWITCH, pressure
17	4818277	1	SENDING UNIT, engine oil pressure 1 0917415-2 Nut
-	4024107-7	-	KIT, gasket

THERMOSTAT & HOUSING



LUBE OIL FILTER





---

**INTAKE MANIFOLD**

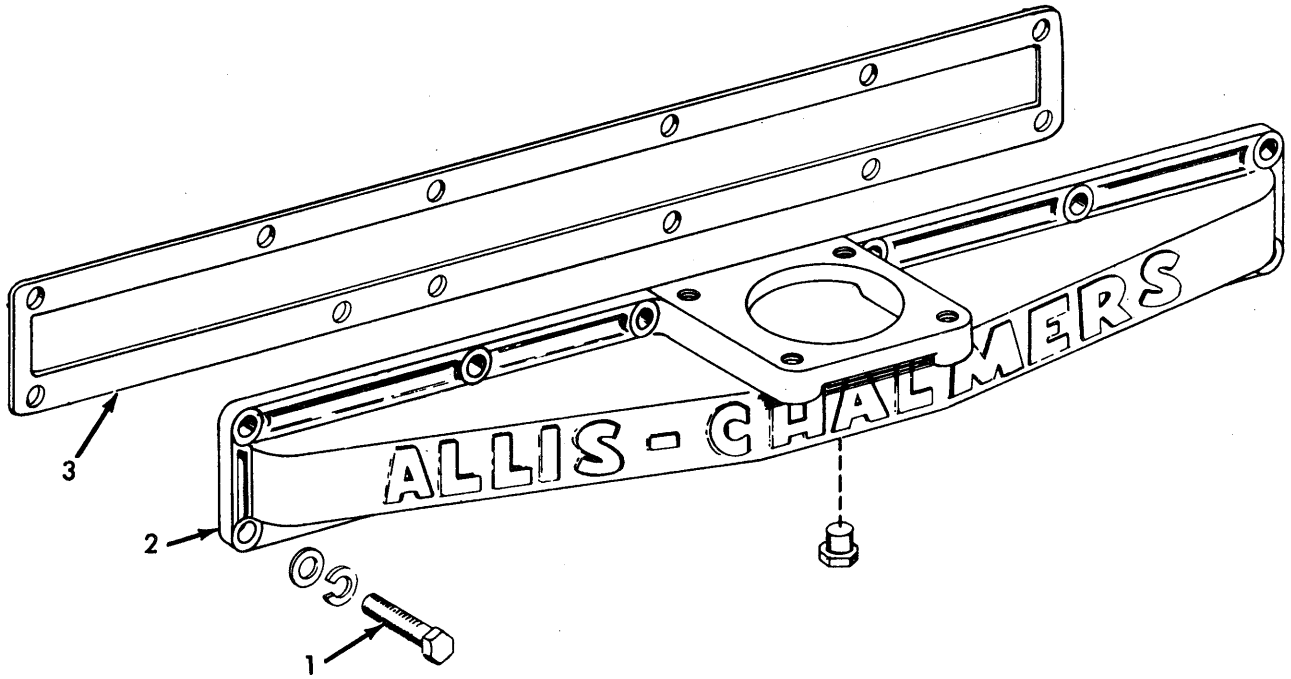
ITEM	NUMBER	QTY	DESCRIPTION
1	922405	12	CAPSCREW, manifold
			1 930875 Washer, plain
2	4020017-2	1	MANIFOLD, intake
			1 0919134-7 Plug, pipe
3	4021332-4	1	GASKET, manifold, intake
-	4024106-9	1	KIT, gasket

---

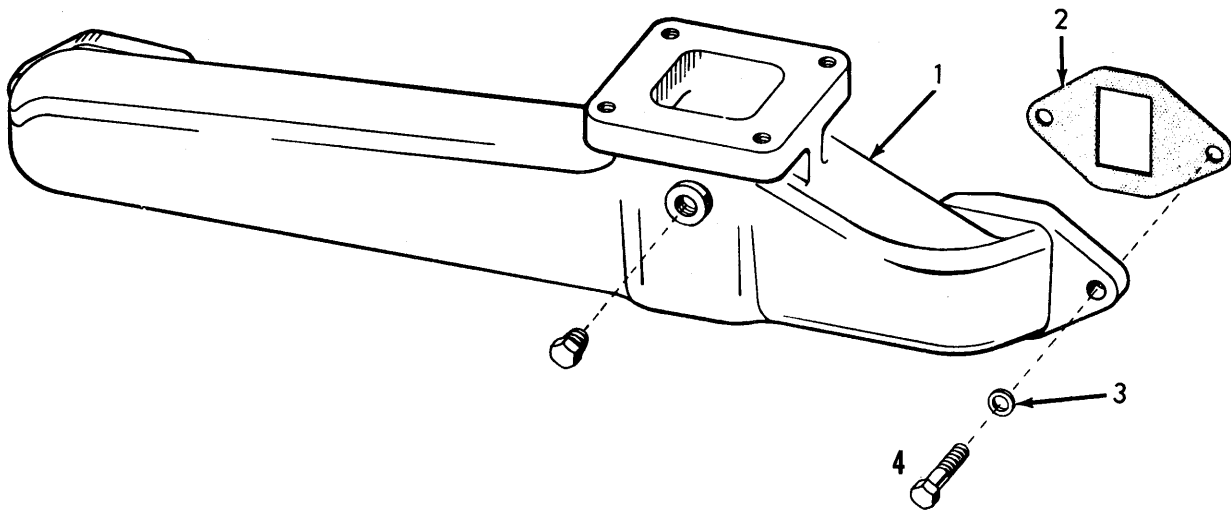
**EXHAUST MANIFOLD**

ITEM	NUMBER	QTY	DESCRIPTION
1	4020685-6	1	MANIFOLD, exhaust
	4006990	1	MANIFOLD, exhaust (piston cooling)
			6 4021803-4 Capscrew
			1 0919840-9 Plug, pipe
2	4020090-9	3	GASKET, exhaust manifold
3	4506761-8	6	WASHER, tab
4	4021803	6	CAPSCREW
-	4024106-9	-	KIT, gasket

INTAKE MANIFOLD



EXHAUST MANIFOLD



## OIL SUMP

ITEM	NUMBER	QTY	DESCRIPTION
-	4023535-0	1	PUMP ASSY., oil (incl. items 1 thru 9)
		2	919224 Capscrew
		2	910287 Washer, lock
1	4023622-6	1	GEAR, drive, oil pump
2	4023976-6	1	HOUSING ASSY., oil
3	4393346-4	1	BUSHING
4	4023977-4	1	SHAFT & GEAR ASSY., drive
5	4023978-2	1	SHAFT & GEAR ASSY., idler
6	4024001-2	1	GASKET, pump
7	4023972-5	1	COVER, pump
		4	4255990-6 Capscrew
8	4354571-4	1	PISTON, pressure relief valve
9	4028888-8	1	SPRING, pressure relief valve
		1	911114 Washer, plain
		1	923507 Pin, spring
10	4023481-7	1	TUBE, pressure
		2	0921331-5 Nut, ¼ tube
11	4024442-8	1	TUBE ASSY., suction
		4	914392 Capscrew
		4	904205 Washer, lock
12	4023459-3	1	GASKET, suction tube
13	4021022-1	1	GASKET, oil pan
14	4024431-1	1	PAN, oil
		4	914392 Capscrew
		28	915807 Capscrew
		2	0914670-5 Capscrew
		1	0921204-4 Plug, (incl. O-Ring)
		1	0921206-9 O-Ring
		34	0912369-6 Washer, plain
		1	0921073-3 Plug
-	4024107-7	-	KIT, gasket

OIL SUMP

