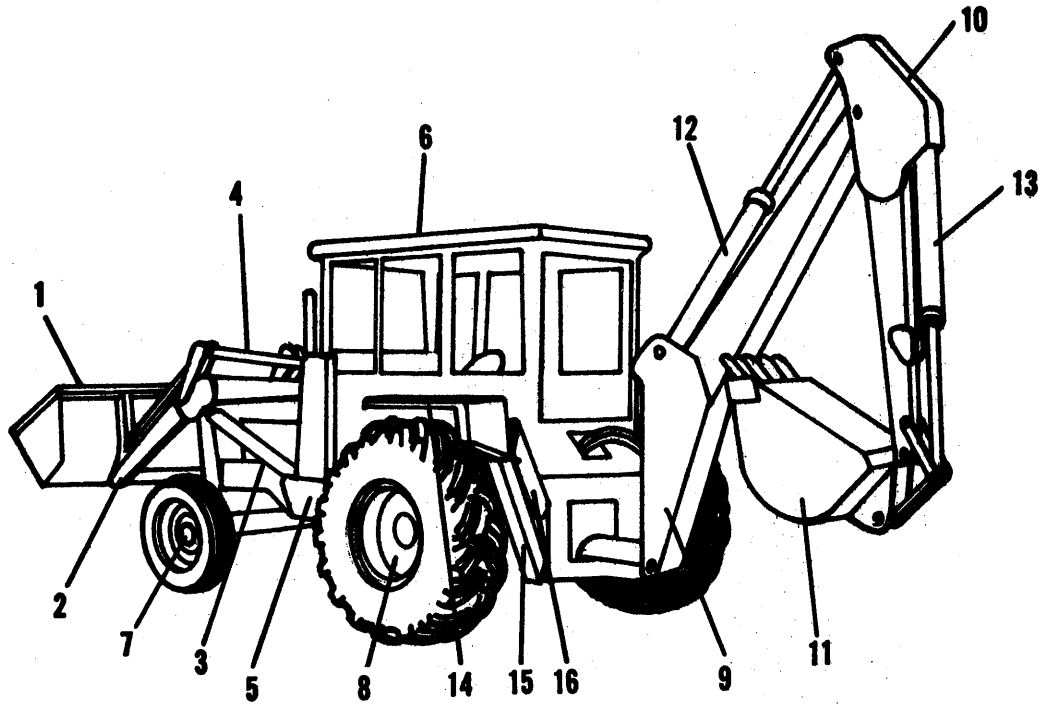




**PARTS CATALOG**  
**MODEL 918**  
**TRACTOR**  
**LOADER-BACKHOE**



## GENERAL DESCRIPTION



1. LOADER BUCKET
2. LOADER LIFT ARMS
3. LOADER LIFT CYLINDER
4. LOADER DUMP CYLINDER
5. LOADER-BACKHOE FRAME
6. CAB
7. FRONT AXLE & TIRE
8. REAR AXLE & TIRE

9. BACKHOE BOOM
10. BACKHOE DIPPERSTICK
11. BACKHOE BUCKET
12. BACKHOE DIPPER CYLINDER
13. BACKHOE BUCKET CYLINDER
14. TRACTOR FENDERS
15. BACKHOE STABILIZER
16. BACKHOE STABILIZER CYLINDER

## FOREWORD

The parts in this catalog are listed in alphabetical order and are located at the front of this catalog.

Except for some common hardware all parts are identified with an item number. Common hardware not identified such as bolts, nuts, cotter pins and lubrication fittings, are listed in the text under the part which they attach or fit into. Note particularly that the quantity of hardware listed is always the quantity required for one part.

Common attaching hardware listed under a part is not included in the assembly or included with the part unless specified. Example: (Incl. Bolt, Lock-washer and Nut).

"Assembly or Packaged Parts" indicates if an individual part is one of many in a large assembly or one of several kinds in a package.

All numbers are listed in the second last section of this catalog showing the quantity and description of the various parts that make up the assembly or package.

The last section of this catalog contains a part number index to indicate on which page or pages a part number appears.

All illustrations will be found to follow the text of each group or section of which it is a part.

For any additional copies of this catalog there will be a supplementing service charge of three dollars. Refer any requests to your Branch House or office under which you operate.

## HOW TO ORDER PARTS

Order all parts for this machine from your local ALLIS-CHALMERS Dealer.

When ordering parts for this unit, supply the following information:

1. The tractor and engine serial numbers.
2. The model or name of the unit and its serial number.
3. State the common name of the part you wish to order, or a description of the part and its location on the unit, or bring in old part.

4. Always print your name and post office address, where parts are to be shipped; also specify whether material is to be shipped by freight, express or parcel post.

5. When ordering parts always determine right hand and left hand from a position in the operators seat facing the direction of forward travel. On Backhoe Units Right and Left is determined by facing the Backhoe from the operator seat.

## IMPORTANT

Unless claims for shortages or errors are made immediately upon receipt of goods, they will not be considered.

When broken goods are received, a full description of the damage should be made by the carrier agent on the freight bill. If this description is insisted upon full damage can always be collected from the transportation company.

No responsibility is assumed for delay or damage to merchandise while in transit. Our responsibility

ceases upon delivery of shipment to the transportation company, from whom a receipt is received showing that shipment was in good condition when delivered to them; therefore claims (if any) should be filed with the transportation company and not with Allis-Chalmers Manufacturing Company.

The right is reserved to change the construction or material of any parts where it seems desirable to do so, without incurring the obligation of installing such changes on units already delivered.

INDEX

<b>AIR CLEANER</b> . . . . .	42	<b>BACKHOE: (Continued)</b>	
<b>AIR FILTER INDICATOR</b> . . . . .	52	Link, swing . . . . .	126
<b>AIR HEATER</b> . . . . .	24	Link, swing guide . . . . .	126
<b>ASSEMBLIES &amp; PACKAGED PARTS</b> . . . . .	146	Linkage Assy., bucket . . . . .	122
<b>ATTACHMENTS:</b>		Shoe, stabilizer . . . . .	124
<b>Buckets:</b>		Stabilizers . . . . .	124
Backhoe . . . . .	134	Swing Frame . . . . .	126
Loader . . . . .	114	<b>CONSOLE SHELL</b> . . . . .	74
<b>Bucket Teeth:</b>		<b>ELECTRICAL:</b>	
Backhoe . . . . .	134	Battery . . . . .	40
Loader . . . . .	114	Battery Box . . . . .	40
<b>Cab</b> . . . . .	140	Electric Shut-off . . . . .	30
Heater . . . . .	144	Electrical Starting . . . . .	40
Heater & Defroster Kit . . . . .	144	Generator . . . . .	38,40
Light Group . . . . .	138	Heater Switch . . . . .	24
Flasher . . . . .	136	Instrument Panel . . . . .	50
Lamps . . . . .	136	Air Filter Indicator . . . . .	50
Switch . . . . .	136	Ammeter Assy.. . . . .	50
Wires . . . . .	136	Converter Temp. Gauge . . . . .	50
Windshield Washer . . . . .	142	Dash Lamp . . . . .	50
Work Light Package . . . . .	136	Fuel Gauge Assy. . . . .	50
Lamps . . . . .	136	Fuse . . . . .	50
Switch . . . . .	136	Key . . . . .	50
Wires . . . . .	136	Light Assy., indicator . . . . .	50
Ether Starting System . . . . .	42	Lighting Switch . . . . .	50
Kit, four pinion conversion . . . . .	66	Switch . . . . .	50
Kit, stabilizer (For Reversing) . . . . .	124	Tach-hour Meter . . . . .	50
Street Pad . . . . .	124	Water Temp. Gauge . . . . .	50
Vandalism Cover . . . . .	46	Pulley . . . . .	38
Weights . . . . .	46	Starting Motor . . . . .	36
<b>AXLE ASSEMBLY:</b>		Voltage Regulator . . . . .	40
Brake Assy. . . . .	68	Wiring Group:	
Drum . . . . .	68	Sending Unit:	
Differential . . . . .	66	Fuel . . . . .	80, 82
Carrier . . . . .	66	Temperature. . . . .	20
Gear, ring . . . . .	66	Wiring Harnesses	
Gear, side . . . . .	66	Instrument Panel . . . . .	50
Shaft . . . . .	66	<b>ENGINE</b> . . . . .	6
Spider . . . . .	66	Adapter Plate . . . . .	8
Final Drive . . . . .	68	Breather Tube . . . . .	12
Rear Axle . . . . .	68	Camshaft . . . . .	10
Gear, final drive . . . . .	68	Connecting Rod . . . . .	10
Shaft w/Pinion . . . . .	68	Crankshaft . . . . .	8
<b>BACKHOE:</b>		Cylinder Block . . . . .	6
Arm Assembly, bucket. . . . .	122	Cylinder Head . . . . .	12
Boom . . . . .	120	Drain Plug . . . . .	16
Control Handles . . . . .	128	Exhaust Manifold. . . . .	22
Dipperstick . . . . .	122	Exhaust Valve . . . . .	12
		Fan Belt . . . . .	20
		Fan Blade. . . . .	20

## INDEX

## ENGINE: (Continued)

Flywheel . . . . .	8
Front Plate & Gear Cover . . . . .	14
Fuel Filter . . . . .	28
Fuel Injection Pump & Drive . . . . .	30
Gear, injection pump . . . . .	30
Housing & Drive . . . . .	32
Shaft, drive . . . . .	32
Transfer Pump, head & rotor . . . . .	34
Gear:	
Camshaft . . . . .	10
Crankshaft . . . . .	8
Oil Pump . . . . .	18
Pump Drive . . . . .	16
Ring, flywheel . . . . .	8
Gauge, oil level . . . . .	6
Hydraulic Housing & Gear . . . . .	16
Idler Gear Assy. . . . .	14
Inspection Plate . . . . .	14
Intake Manifold . . . . .	22
Intake Valve . . . . .	12
Nozzle Holder & Injection Lines . . . . .	26
Nozzle Holder Assembly . . . . .	26
Oil Filter . . . . .	16
Oil Pan . . . . .	16
Oil Pump . . . . .	18
Piston . . . . .	10
Primer Pump & Lines . . . . .	28
Hand Primer Pump Assy . . . . .	30
Pulley . . . . .	8, 20
Roller Arm . . . . .	10
Shaft, idler gear . . . . .	14
Shaft, rocker arm . . . . .	10
Thermostat & Housing . . . . .	20
Timing Cover . . . . .	14
Valve Lifters . . . . .	10
Valve Operating Mechanism . . . . .	10
Water Pump . . . . .	20

FOOT ACCELERATOR . . . . . 76

FORWARD . . . . . 2

FRONT SUPPORT . . . . . 46

FUEL TANK . . . . . 80

GENERAL DESCRIPTION . . . . . 1

GRILLE . . . . . 46

HOOD . . . . . 46

    Hood Support, rear . . . . . 48

## HYDRAULICS:

    Backhoe . . . . . 102

## HYDRAULICS: (Continued)

## Backhoe (Continued)

Cylinders:	
Boom . . . . .	120, 130
Bucket . . . . .	122, 134
Dipper . . . . .	120, 130
Stabilizer . . . . .	124, 132
Swing . . . . .	126, 132
Tubes . . . . .	120
Valve . . . . .	102, 108
Valve, swing . . . . .	104, 110
Valve, swing cushion . . . . .	126
Filter, fuel tank . . . . .	80
Intake Tube . . . . .	88

## Loader:

Breather . . . . .	112
Bucket Indicator . . . . .	102
Cylinders:	
Bucket . . . . .	102, 118
Lift . . . . .	102, 118
Filter . . . . .	102, 110
Strainer & Magnet . . . . .	104
Valve . . . . .	102, 106
Manifold, pump . . . . .	86
Power Steering:	
Control Valve . . . . .	48
Lines, oil cooler . . . . .	94
Lines, power steering . . . . .	90
Oil Cooler . . . . .	94
Pump . . . . .	90
Ram . . . . .	90, 92
Valve . . . . .	90, 92
Pump, front dual . . . . .	100
Pump, primer . . . . .	80
Pump, single . . . . .	86
Strainer . . . . .	88
Sump Cover . . . . .	88
Valve, shut-off . . . . .	80

## LOADER:

Control Handles . . . . .	116
Lift Arms . . . . .	114
Levers, tilt . . . . .	114
Links . . . . .	114

## MAINFRAME, loader-backhoe

Floorboard . . . . .	112
Panel, front . . . . .	112
Plate, rear axle . . . . .	112
Tank Support . . . . .	112
Tie Assy., lower . . . . .	112
Tie Assy., top . . . . .	112

NUMERICAL INDEX . . . . . 152

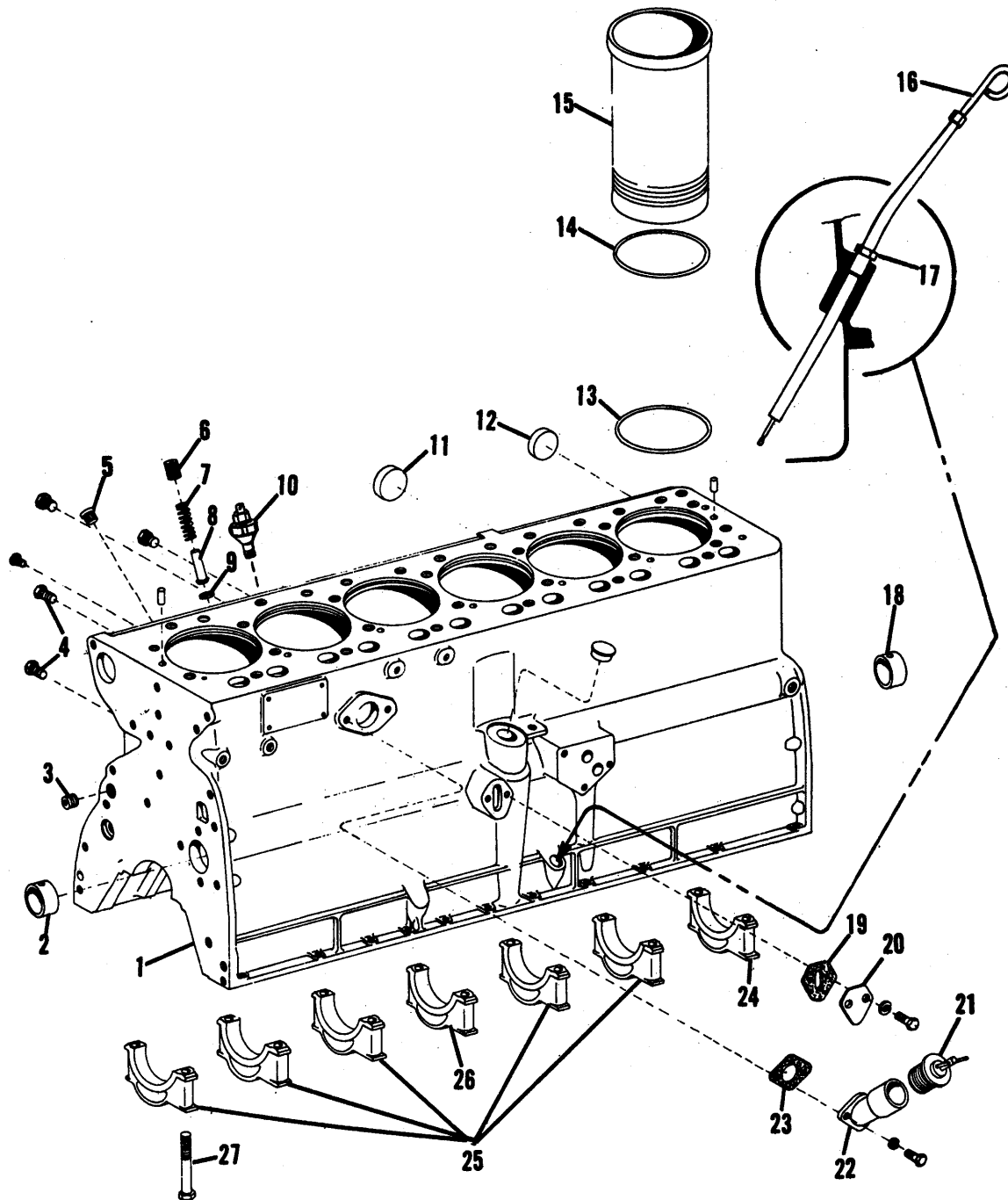
## INDEX

<b>PARKING BRAKE LOCK</b> . . . . .	70	<b>TRANSMISSION (Continued)</b>	
Lever . . . . .	70	Gears (Continued)	
Pawl . . . . .	70	2nd Main Shaft . . . . .	60
<b>PLATFORM</b> . . . . .	72	3rd Counter Shaft . . . . .	62
<b>RADIATOR &amp; SUPPORTS</b> . . . . .	44	3rd Main Shaft . . . . .	60
<b>RADIATOR SHELL</b> . . . . .	46	Reverse Counter Shaft . . . . .	62
<b>SEAT</b> . . . . .	78	Sliding Main Shaft . . . . .	60
<b>SEAT SUPPORT</b> . . . . .	78	Turbine Drive . . . . .	56
<b>SHUTTLE CLUTCH</b>		Gear Shift Linkage . . . . .	64
Bellcrank . . . . .	74	Housing . . . . .	60
Control . . . . .	74	Input Shaft . . . . .	62
Foot Pedals . . . . .	76	Idler Shaft & Gear . . . . .	56
Levers . . . . .	74	Intermediate Shaft & Gear . . . . .	54
Lines . . . . .	94	Main Shaft . . . . .	60
Manifold . . . . .	96, 98	Oil Level Gauge Assy. . . . .	60
Oil Filter . . . . .	94	Turbine Input Shaft . . . . .	56
Relief Valve . . . . .	98	<b>UNIVERSAL JOINT ASSEMBLY</b> . . . . .	100
Sump & Manifold Lines . . . . .	96, 98	<b>WHEELS:</b>	
Valve . . . . .	74, 96	Rear . . . . .	72
<b>SIDE FRAME</b> . . . . .	44	Rim, rear . . . . .	72
<b>STEERING:</b>		Tire & Tube . . . . .	72
Arm, spindle . . . . .	84		
Front Axle . . . . .	84		
Front Wheels . . . . .	84		
Rims . . . . .	84		
Spindle . . . . .	84		
Tie Rod . . . . .	84		
Tire & Tube . . . . .	84		
Wheel & Shaft . . . . .	48		
<b>SUMP COVER</b> . . . . .	54		
<b>TOOL BOX</b> . . . . .	78		
<b>TORQUE CONVERTER</b> . . . . .	52		
<b>TORQUE HOUSING</b> . . . . .	54		
<b>TRANSMISSION:</b>			
Breather Assy., cover . . . . .	60		
Breather Assy., differential . . . . .	60		
Clutch . . . . .	58		
Clutch Shaft . . . . .	58		
Control Cover, gear shift . . . . .	64		
Countershaft . . . . .	62		
Cover . . . . .	60		
Gears:			
1st. Main Shaft . . . . .	60		
2nd Counter Shaft . . . . .	62		

## CYLINDER BLOCK

ITEM	PART NUMBER	QTY.	DESCRIPTION	ASSEMBLY OR PACKAGE NO.
1	4023709	1	BLOCK ASSY., cylinder (Incl. items 2, 4, 9, 11, 12, 17, 27 & 28. PLUGS & DOWELS listed below) (Replaces 4021859)	
		2	917547 PIN, dowel (top deck) 3/8 x 3/4	
		1	919840 PLUG, pipe, 1/4	
		2	919134 PLUG, pipe, 1/8	
		1	918850 PLUG, pipe, 1/4	
		3	920416 PLUG, pipe, 1/2	
		1	912415 COCK, drain	
		2	4020665 PLUG, pipe	
2	4025025	1	BEARING, camshaft, front (Std.)	
	4025259	1	BEARING, camshaft, front (.010 undersize)	
3	4025392	1	PLUG, pipe, restrictor	
4	4255492	2	PLUG, pipe	
5	4362338	2	PLUG, oil gauge hole	
6	4022129	1	SCREW, oil pressure regulating	
7	4500231	1	SPRING, oil pressure regulating valve	
8	4507374	1	PISTON, oil pressure regulating valve	
9	4507673	1	INSERT, oil pressure regulating valve	
10	4021445	1	SWITCH, oil pressure sensing	
		1	907059 ELBOW, street, 1/8, 90°	
11	4255110	1	PLUG, expansion	
12	4255107	2	PLUG, expansion	
13	-----	12	O-RING, cyl. sleeve (See PISTON, CONN. ROD & SLEEVE Group)	
	4020537	*	SHIM, cylinder sleeve (.005" thick)	
	4020538	*	SHIM, cylinder sleeve (.010" thick)	
14	4020539	*	SHIM, cylinder sleeve (.015" thick)	
	4020540	*	SHIM, cylinder sleeve (.020" thick)	
			(* Use as req'd. when remachining block)	
15	-----	1	SLEEVE, cyl. (See PISTON, CONN. ROD & SLEEVE Group)	
16	4022913	1	GAUGE, oil level (Replaces 4021611)	
17	4022685	1	ADAPTER ASSY., oil level gauge (Replaces 4021615)	
18	4025238	3	BEARING, camshaft, interm. & rear (Std.)	
	4025258	3	BEARING, camshaft, interm. & rear (.010" undersize)	
19	4025019	1	GASKET, fuel pump pad . . . . . 4022051	
20	4026383	1	PLATE, fuel pump pad	
		2	915809 CAPSCREW, 5/16NC x 3/4, gr. 5	
		2	904205 LOCKWASHER, 5/16	
21	4021711	1	PLUG, oil filler (Replaces 4385253)	
22	4021498	1	ELBOW, oil filler (Replaces 4020512)	
		2	916272 CAPSCREW, 3/8NC x 1-1/4, gr. 5	
		2	904206 LOCKWASHER, 3/8	
		2	922464 WASHER, plain	
23	4025021	1	GASKET, elbow, oil filler . . . . . 4022051	
24	4020382	1	CAP, rear main bearing	
25	4020380	5	CAP, intermed. & front main bearing	NOTE: Replacement bearing caps are semi-finished & must be line bored after installing.
26	4020381	1	CAP, center main bearing	
27	4020135	14	CAPSCREW, main bearing cap	
--	4022415	1	ENGINE ASSY., replacement D-2800 (Replaces 4021920)	

NOTE: Replacement Engines Do Not Include: Fan, Fan Belt, Clutch, Muffler, Air Cleaner, Starting Motor or Generator.





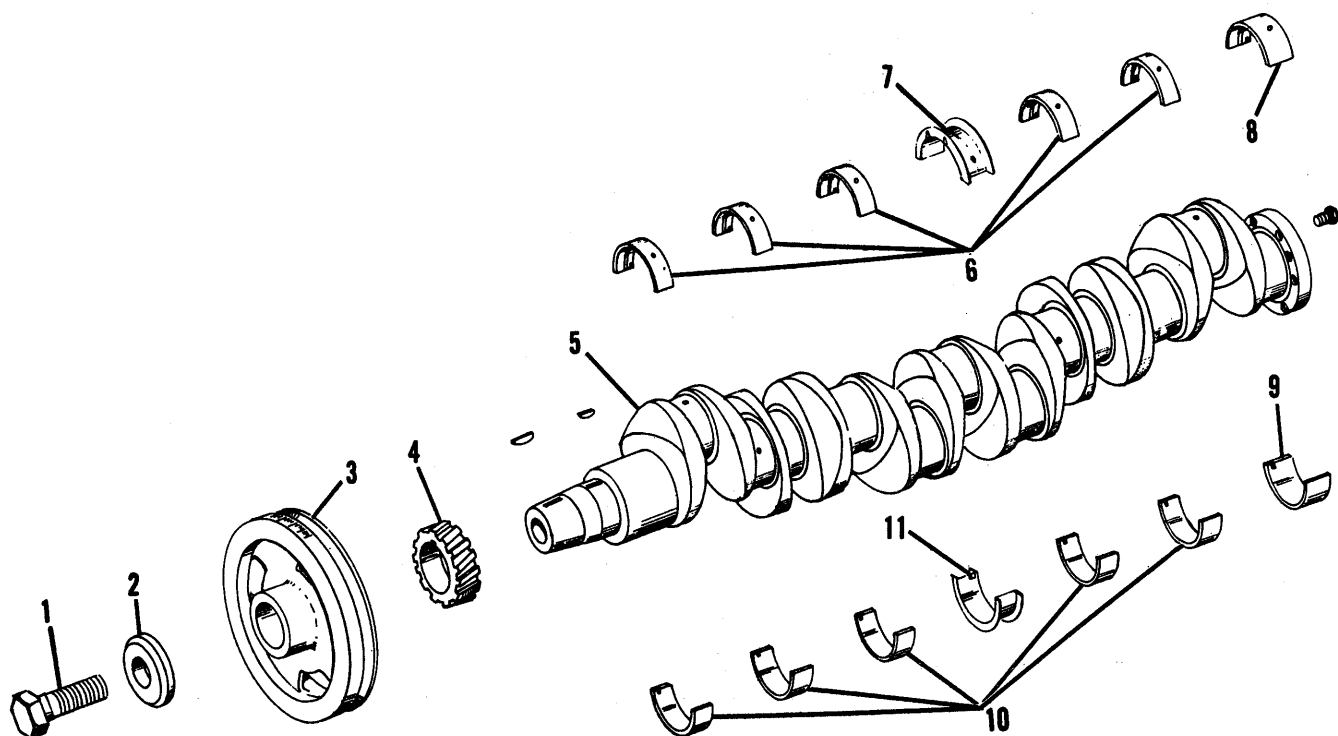
**CRANKSHAFT**

ITEM	PART NUMBER	QTY.	DESCRIPTION	ASSEMBLY OR PACKAGE NO.
1	4020148	1	CAPSCREW, pulley	
2	4020149	1	WASHER, pulley	
3	4022585	1	PULLEY, dampner & crankshaft	
		1	905845 KEY, woodruff, 1/4 x 7/8	
4	4020002	1	GEAR, crankshaft	
		1	905845 KEY, woodruff, 1/4 x 7/8	
5	4022256	1	CRANKSHAFT	
	4022083	5	BEARING, frt. & inter. upper (std.)	
	4022094	5	BEARING, frt. & inter. upper (.002) (Replaces 4020450)	
6	4022095	5	BEARING, frt. & inter. upper (.010)	
	4022096	5	BEARING, frt. & inter. upper (.020)	
	4022098	5	BEARING, frt. & inter. upper (.040)	
	4022087	1	BEARING, center, upper, std	
	4022114	1	BEARING, center, upper, (.002) (Replaces 4020470)	
7	4022115	1	BEARING, center, upper (.010)	
	4022116	1	BEARING, center, upper (.020)	
	4022118	1	BEARING, center, upper (.040)	
	4022085	1	BEARING, rear, upper (std.)	
	4022104	1	BEARING, rear, upper (.002) (Replaces 4020460)	
8	4022105	1	BEARING, rear, upper (.010)	
	4022106	1	BEARING, rear, upper (.020)	
	4022108	1	BEARING, rear, upper (.040)	
	4022086	1	BEARING, rear lower (std.)	
	4022109	1	BEARING, rear lower, (.002) (Replaces 4020465)	
9	4022110	1	BEARING, rear lower (.010)	
	4022111	1	BEARING, rear lower (.020)	
	4022113	1	BEARING, rear lower (.040)	
	4022084	5	BEARING, frt. & inter. lower (std.)	
	4022099	5	BEARING, frt. & inter. lower (.002) (Replaces 4020455)	
10	4022100	5	BEARING, frt. & inter. lower (.010)	
	4022101	5	BEARING, frt. & inter. lower (.020)	
	4022103	5	BEARING, frt. & inter. lower (.040)	
	4022088	1	BEARING, center, lower (std.)	
	4022119	1	BEARING, center, lower (.002) (Replaces 4020475)	
11	4022120	1	BEARING, center, lower (.010)	
	4022121	1	BEARING, center, lower (.020)	
	4022123	1	BEARING, center, lower (.040)	

**FLYWHEEL & ADAPTER PLATE**

ITEM	PART NUMBER	QTY.	DESCRIPTION	ASSEMBLY OR PACKAGE NO.
1	4020016	1	O-RING, flywheel plate (8-1/4 ID)	.4022051
2	4020879	1	O-RING, flywheel plate (2-1/4 ID)	.4022051
3	4022125	1	PLATE, flywheel adapter	
		7	919230 CAPSCREW, 1/2NC x 1-3/8, gr. 5	
		7	904208 LOCKWASHER, 1/2	
		2	917021 PIN, dowel, 1/2 x 1	
4	4021969	1	SEAL, oil (Replaces 4020575)	
5	4516033-0	1	SLEEVE, oil seal (Replaces 4514813)	
6	4500300	2	DOWEL, flywheel	
7	4022127	1	FLYWHEEL ASSY., (Incl. item 8)	
8	4023904-8	1	GEAR, ring (Replaces 4020118)	
9	4254594	4	BOLT, flywheel	

CRANKSHAFT



FLYWHEEL & ADAPTER PLATE

