

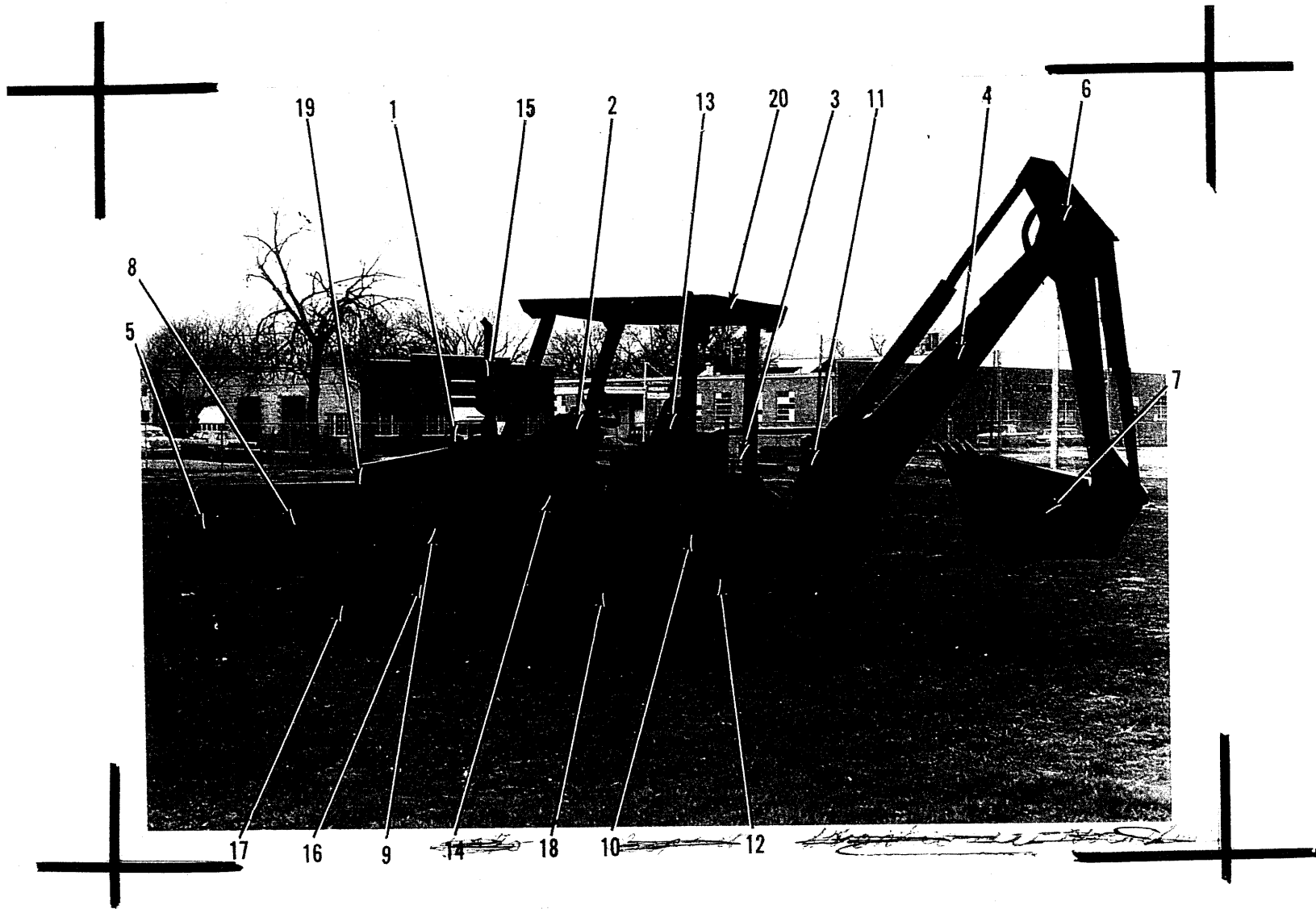


# **PARTS CATALOG**

# **715 BACKHOE- LOADER**

LITHO U.S.A.

FORM 9004560  
REPLACES 1012411  
REVISED DEC. 1975



#120

## GENERAL DESCRIPTION

Short  
H<sub>9</sub> 100%

#120 Outlets  
with Half ton  
callouts in combination

1. AIR CLEANER (INTAKE)
2. CONTROL PANEL
3. CONTROLS (BACKHOE)
4. BACKHOE BOOM
5. LOADER BUCKET
6. BACKHOE DIPPERSTICK
7. BACKHOE BUCKET
8. DUMP CYLINDER (LOADER)
9. LOADER CYLINDER
10. SWING CYLINDER (BEHIND TIRE & FRAME)
11. STABILIZER CYLINDER
12. STABILIZER
13. SEAT
14. PEDAL CONTROLS
15. MUFFLER
16. BATTERY LOCATION
17. FRONT AXLE AND TIRE
18. REAR AXLE AND TIRE
19. GRILLE
20. CANOPY

### L. H. & R. H. SIDE OF LOADER AND BACKHOE

THE L. H. & R. H. SIDE OF THIS EQUIPMENT IS DESIGNATED BY THE OPERATOR SITTING IN THE OPERATOR'S SEAT, FACING THE DIRECTION OF FORWARD TRAVEL.

## FOREWORD

### ALPHABETICAL INDEX

The alphabetical index is located at the front of this catalog. It is used to locate major groups, assemblies and components.

### NUMERICAL INDEX

The numerical index is located at the end of this catalog and indicates on which page or pages a part number appears.

### ILLUSTRATIONS

All illustrations are located on the right hand page with the text on the left. Except for some common hardware, all parts are identified with an item number which corresponds to the "item" column on the text page. This is followed by the part number, quantity and description.

### HARDWARE

Common hardware not identified such as bolts, nuts, cotter pins and lube fittings, are listed indented in the text beneath the item which they attach or fit into. Common hardware listed indented beneath an item is NOT included unless specified. Example: (Incl. BOLT, LOCKWASHER & NUT).

### HARDWARE

Common hardware not identified such as bolts, nuts, cotter pins and lube fittings, are listed indented in the text beneath the item which they attach or fit into. Common hardware listed indented beneath an item is NOT included unless specified. Example: (Incl. BOLT, LOCKWASHER & NUT).

### ORDERING PARTS

Be sure to refer to both the text and the illustration to assure ordering the correct part.

**ALPHABETICAL INDEX**

<b>AIR INTAKE AND EXHAUST</b> .....	6	<b>ELECTRICAL SYSTEM (continued)</b>	
Air Cleaner Assembly .....	8	Key, switch .....	44
Air Cleaner Group .....	8	Pulley, alternator.....	44, 45A
Exhaust Manifold .....	6	Sending Units	
Intake Manifold .....	6	Fuel Gauge .....	44, 45A
Muffler Group .....	10	Temperature .....	44, 45A
<b>ALPHABETICAL INDEX</b> .....	3	Switches	
<b>ASSEMBLIES AND PACKAGED PARTS</b> .....	166	Oil Pressure .....	44, 45A
<b>ATTACHMENTS</b> .....	162	Push Button .....	44, 47A
Buckets, Backhoe .....	162	Safety Start .....	44, 47A
Cutting Edges .....	162	Wiring .....	44, 45A
Buckets, Loader .....	164	Instrument Panel (Canopy) .....	48, 49A
Cutting Edge .....	164	Flasher .....	48, 49A
Tooth Group .....	164	Fuse Block Assy.....	48, 49A
<b>CAB</b> .....	165A, 165B, 165E	Switches	
<b>BACKHOE GROUP</b> .....	12	Light .....	48, 47A, 49A
Backhoe Controls .....	36	Turn Signal .....	48, 49A
Backhoe Valve & Lines .....	12	Wire Harness .....	48, 49A
Boom & Hydraulics .....	20	Wiring .....	48, 49A
Control Valve, Backhoe .....	30, 32, 33A	Instrument Panel (Gauges) .....	46, 47A
Control Valve, Backhoe Swing .....	34, 35A	Cover, panel .....	46
Cylinders, Backhoe .....	24	Fuse Holder .....	46, 47A
Boom Cylinder .....	24	Gauges	
Bucket Cylinder .....	27	Fuel & Voltage .....	46, 47A
Cushion Assy., swing .....	29	Water & Oil Temperature ..	46, 47A
Dipperstick Cylinder .....	25	Warning Lights .....	46, 47A
Stabilizer Cylinder .....	26	Wire Harness .....	46, 47A
Swing Cylinder .....	28	Wiring .....	46, 47A
Dipperstick & Hydraulics .....	22	Lamp Assembly, warning .....	54
Stabilizer, Pad & Stabilizer Cylinder .....	18	<b>Starting Motor Assembly</b> . . . . .	52
Stabilizer Street Pad .....	18	<b>ENGINE</b> .....	56
Swing Frame & Cylinders .....	16	Crankshaft .....	60
Swing Valve & Lines .....	14	Bearing Set, main .....	60
<b>COOLING SYSTEM</b> .....	38	Flywheel & Starting Ring Assy.	60
Filter .....	40	Gear .....	60
Front Weight .....	40	Pulley .....	60
Radiator .....	40	Crankshaft, Timing Gear & Front	
Transmission Oil Cooler .....	40	Cover .....	68
Water Outlet .....	42	Camshaft .....	68
Thermostat .....	42	Covers, inspection .....	68
Water Pump .....	38	Gears	
Belt, fan .....	38	Camshaft .....	68
Blade Assy., fan .....	38	Hyd. Pump Drive .....	68
Drive Shaft .....	38	Idler .....	68
Impeller .....	38	Housing, timing gear .....	68
Pulley, pump .....	38	Cylinder Block .....	56
<b>ELECTRICAL SYSTEM</b> .....	44	Bridge Piece, rear .....	56
Alternator Assembly .....	50	Engine Assy., replacement . . . . .	56
Electrical Group .....	44	Filler, lub. oil .....	56
Battery .....	44	Housing, crankshaft rear end ..	56
Battery Box Cover .....	44, 45A	Liner, cylinder .....	56
Cables, battery		Cylinder Head .....	62
Case .....	44, 45A	Cover, rear end .....	62
Ground .....	44	Valves	
Positive .....	44	Exhaust .....	62
Fan .....	44, 45A	Inlet .....	62
Horn .....	44, 45A	Cylinder Head Cover & Rocker Arm..	58
Hour Meter .....	44, 47A	Lever, rocker shaft .....	58
		Rod, push .....	58
		Shaft, rocker assembly .....	58
		Tappet .....	58
		Flywheel Housing, cylinder block ..	64
		Oil Filters .....	64

<b>ENGINE (continued)</b>		<b>MAINFRAME GROUP</b>	114
Oil Sump & Pump	66	Front Console	118
Dipstick Assembly	66	Covers	118
Gear, oil pump idler	66	Kick Panel	118
Pan, oil sump	66	Frame, Fenders, Hood, Grille And	
Shaft, idler gear	66	Rear Axle Mounting	114
Strainer, oil suction	66	Platform	116
Piston & Connecting Rod	60	Console Assembly	116
Bearing Set	60	Rollover Structure, Canopy And	
Ring, pack set	60	Lights	122
<b>FUEL SYSTEMS</b>	70	Lights	
Cable Assembly, throttle	74, 76	Flood	122
Engine Fuel Controls	76	Tail	122
Bellcrank Assy., throttle	76	Warning	122
Cable Assy., throttle & fuel shut-off	76	R.O.P.S. Assembly	122
Foot Pedal Assembly	76	Seat And Seat Support	120
Rod, throttle	76	Seat Belt Assembly	120
Fuel Filters & Lines	72	<b>NUMERICAL INDEX</b>	172
Element Kit	72	<b>POWER TRAIN GROUP</b>	124
Fuel Injection Pump & Drive	78	Axle Housing, rear drive	144
Gear, driving	78	Cone And Roller Assy., pinion	144
Fuel Lift Pump	70	Gear Set, matched	144
Fuel Tank & Lines	86	Housing, center	144
Cover, battery box	86	Spacer, pinion bearing	144
Sending Unit, fuel gauge	86	Brake Assembly	150
Separator, water	86	Differential Assembly, rear axle	146
Valve, fuel shut-off	86	Case Assy., differential	146
Injection Nozzle And Lines	74	Cone And Roller Assembly	146
Injection Pump Components		Gear Set, matched	146
Housing And Drive	80, 82	Gears, Spider And Pinion	146
Transfer Pump, Head And Rotor	84	Differential Lock Linkage	150
Nozzle Holder Assembly	78	Rear Axle Housing And Brake Parts	148
Pre-Filter, Fuel Oil Water Separator	88	Gears, Carrier Assy., And Spacer	148
<b>HYDRAULICS</b>	90	Tire And Wheel, rear	152
Hydraulic Filter Assembly	98	Brake Pedals And Linkage	160
Hydraulic Reservoir, Pump Suction Lines		Bellcrank Assembly	160
And Hydraulic Filter	96	Shafts	
Implement Pump Assembly	102	Brake Bellcrank	160
Implement Pump, Pressure And Power		Brake Pedal	160
Beyond Lines	100, 101A	Forward-Reverse Transmission	126
Power Steering Hydraulic Pump And Lines	90	Control Cover, 4-Speed Trans.	140
Gear, pump drive	90	Lever, control	140
Steering Column And Control Valve	90, 92	Rail End	140
Wheel, steering	90	Shift Fork	140
Steering Valve And Column Assy.	90, 92	Shift Rail	140
Sump Lines	98, 99A	Countershaft, 4-Speed Trans.	140
<b>LOADER GROUP</b>	104	Gear, countershaft	140
Control Valve, loader	110, 111A	Roller, bearing	140
Cylinders, loader		4-Speed Transmission Case And	
Lift Cylinder	106	Parking Brake	136
Tilt Cylinder	107	Band Assy., brake	136
Loader Linkage And Cylinders	104	Drum, brake	136
Lift Arm Assembly	104	Lining, brake	136
Pivot Assy., Rod And Tube, bucket		Retainer Assy., mainshaft	136
level gauge	104	Forward And Reverse Disc Assy.	130
Loader Valve Controls	112, 113A	Clutch, plate and hub assy.	
Pressure Lines-Loader Valve To Loader	108, 109A	Forward	130
		Reverse	130

ALPHABETICAL INDEX

Clutch Cyl., front	130
Cylinder Assembly	130
Drum, disc	130
Shaft, forward drive	130
Shaft Assy., input	130
<b>Forward And Reverse Transmission</b>	
Assembly	134
Case Assembly	134
Gears	
Countershaft	134
Forward	134
Idler	134
Reverse	134
Retainer Assy., shaft	134
Shafts	
Idler Gear	134
Output	134
Reverse	134
Mainshaft, 4-Speed Transmission	138
Gears	
1st Speed Mainshaft	138
Main Drive	138
2nd Speed Main Shaft	138
3rd Speed Main Shaft	138
Main shaft, gear	138
Synchronizer Assy.	138
Torque Converter And Pump Assy.	128
Case, transmission housing	128
Driver Plate Kit	128
Pump Drive Gear	128
Transmission Valve Assy.	132
<b>Front Axle Assy. And Mounting Front</b>	
Wheel Assembly	154
Hub Assembly	154
Knuckle Assembly	154
Rim And Disc	154
Rod Assembly, tie	154, 156
Steering Cylinder Assembly	154, 156
Main Drive Shaft	142
<b>Parking Brake Controls</b>	142
Cable Assembly	142
Lever Assembly	142
<b>Power Train Mounting</b>	124
Adaptor	124
Brackets	124
Mount, center bonded	124
<b>Transmission Control Group</b>	158
Bellcrank Assembly	
Clutch	158
Foward, Reverse	158
Handle, Foward-Reverse	158
Support, control	158

**INTAKE MANIFOLD**

ITEM	NUMBER	QTY	DESCRIPTION
1	1006813-8	1	MANIFOLD, intake
2	0922586	1	PLUG, intake manifold
			1 0251014-7 Washer, plug
3	0251242-4	1	GASKET, manifold to head, front
4	0251240-8	1	GASKET, manifold to head, center
5	0251241-6	1	GASKET, manifold to head, rear
6	0251202-8	1	STUD, manifold to head, front top hole
			1 0916602-1 Nut, manifold retaining
			1 0916965-1 Washer, spring
7	0922484-1	1	CAPSCREW, manifold to head, long
			1 0916965-7 Washer, spring
8	0920619-4	4	CAPSCREW, manifold to head
			1 0916965-7 Washer, spring
9	0251248-1	1	ADAPTOR, quick start nozzle
10	3038547-0	1	NIPPLE ASSY.
11	4021600-4	1	INDICATOR ASSY.
-	1009528-9	-	KIT, gasket, top overhaul (Prior to S/N 236U 820A)
-	1012698-5	-	KIT, Gasket, top overhaul (S/N 236U 820A & Up)

**EXHAUST MANIFOLD**

ITEM	NUMBER	QTY	DESCRIPTION
1	0251235-8	1	MANIFOLD, exhaust
2	0257463	2	GASKET, manifold to head (Replaces 251234)
3	0251200-2	4	STUD, manifold to head
			1 251201 Nut, stud retaining
4	0251239-0	2	GASKET, exhaust manifold outlet
5	0251202-8	3	STUD, flange to manifold
			1 0916602-1 Nut, flange
			1 0251238-2 Washer, plain
6	8001556-3	1	ELBOW, exhaust manifold (not shown)
-	1009528-9	-	KIT, gasket, top overhaul (Prior to S/N 236U 820A)
-	1012698-5	-	KIT, Gasket, top overhaul (S/N 236U 820A & Up)





**AIR CLEANER GROUP**

ITEM	NUMBER	QTY	DESCRIPTION
1	1009185-8	1	AIR CLEANER (see Air Cleaner Assy. for Component Parts)
2	0622619-5	2	BAND ASSY.
3	0921965-0	4	CAPSCREW (replaces 0915408-9)
		1	0918266-8 Washer (replaces 0911989-2)
		1	0916965-7 Washer, lock (replaces 0904206-0)
		1	0916950-9 Nut (replaces 0910324-3)
4	1009008-2	1	HOSE, intake
5	0922199-5	2	CLAMP, hose
6	3024261-4	1	CAP, air cleaner

**AIR CLEANER ASSEMBLY**

ITEM	NUMBER	QTY	DESCRIPTION
—	1009185-8	1	CLEANER ASSY., air
1	-----	1	BODY ASSY., (not serviced)
2	1167808-3	1	ELEMENT ASSY.
3	3046857-3	1	BOLT ASSY.
4	4996247-5	1	CLAMP ASSY.
5	0640658-1	1	BAFFLE
6	4996249	1	CUP ASSY.
7	4055119-4	1	CAP
8	-----	1	MARKING (not serviced)

---

AIR CLEANER GROUP

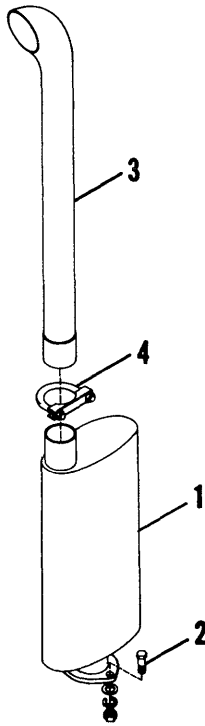
---

AIR CLEANER ASSEMBLY

**MUFFLER GROUP**

ITEM	NUMBER	QTY	DESCRIPTION
1	1008634-6	1	MUFFLER
2	0914847-9	3	CAPSCREW
		1	0911115-4 Washer, plain
		1	0904206-0 Washer, lock
		1	0912772-1 Nut
3	1009261-7	1	EXTENSION, exhaust
4	0929983-5	1	CLAMP, exhaust

MUFFLER GROUP



**BACKHOE VALVE AND LINES**

UN-11-B Main Title  
UN-8-M Sub Title

ITEM	NUMBER	QTY.	DESCRIPTION
1	-----	1	1 VALVE ASY., backhoe (See BACKHOE CONTROL VALVE ASY., for Component Parts)
	926115	3	0 CAPSCREW
	916966	3	4 LOCKWASHER
	922645	0	4 CAPSCREW
	916951	0	4 NUT
2	1009113	1	0 PLATE ASY., valve mounting
	1014181	0	1 PLATE ASY., valve mounting
	921176	4	4 CAPSCREW
	916966	4	4 LOCKWASHER
	916951	4	4 NUT
	917379	4	4 WASHER
3	924296	4	4 CONNECTOR (Incl. O-RING)(Replaces 922935)
	921206	4	4 O-RING
4	921279	4	4 ELBOW, swivel nut
5	914023	6	6 CONNECTOR (Incl. O-RING)(Replaces 922981)
	921205	6	6 O-RING (Replaces 921886)
6	2018964	1	0 PLATE, orifice
	1014476	0	1 PLATE, orifice
7	1008168	6	6 HOSE ASY., valve to swing frame
8	1008143	4	4 HOSE ASY., valve to stab. cylinder
9	1002675	6	6 ELBOW, bulkhead (Incls. NUT)
	919620	6	6 NUT
10	921409	4	4 CONNECTOR (Incl. O-RING)
	921206	4	4 O-RING
11	1014469	0	1 FITTING, orifice
	921206	0	1 O-RING

\* Under S/N 1596  
\*\* S/N 1596 & up



## SWING VALVE AND LINES

UN-11-B Main Title

UN-8-M Sub Title

ITEM	NUMBER	QTY.	DESCRIPTION
		*	**
1		1	1 VALVE ASY., swing (See SWING VALVE ASY. for Component Parts)
	926115	3	0 CAPSCREW
	916966	3	0 LOCKWASHER
	921719	0	3 CAPSCREW
	917356	0	3 LOCKWASHER
2	1009048	1	0 PLATE, swing valve mounting
	921176	4	0 CAPSCREW
	912441	4	0 LOCKWASHER
	916951	4	0 NUT
3	1001525	2	0 ORIFICE
	1014475	0	2 ORIFICE
4	924296	2	0 CONNECTOR (Incl. O-RING) (Replaces 922935)
	921409	0	2 CONNECTOR (Incl. O-RING)
	921206	2	2 O-RING
5	921279	2	2 ELBOW, swivel nut
6	1012476	2	2 HOSE ASY., valve to swing cylinder (Replaces 1008169)
7	922792	2	2 TEE, adjustable (Incl. O-RING)
	921349	2	2 O-RING
8	1012481	2	2 HOSE ASY., swing cyl. to swing cyl. (Replaces 1008170)
9	921401	2	2 ELBOW, adjustable (Incl. O-RING)
	921349	2	2 O-RING

\* Under S/N 1596

\*\* S/N 1596 &amp; up



---

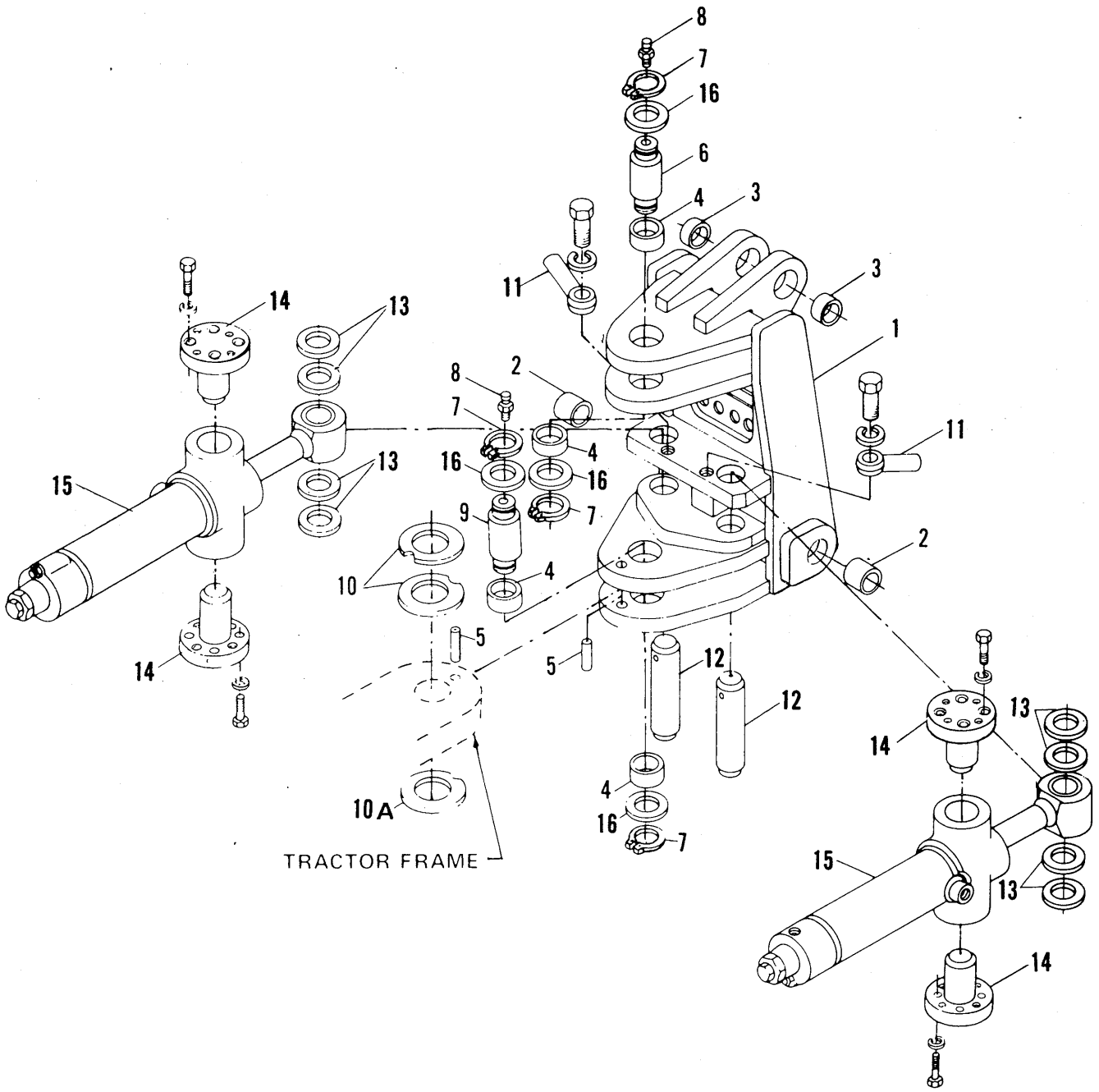
SWING VALVE & LINES

---

**SWING FRAME AND CYLINDERS**

ITEM	NUMBER	QTY	DESCRIPTION
1	1008163-6	1	SWING FRAME ASSY., (incls. items 2, 3, 4 & 1 of item 5)
2	1001115-3	2	BUSHING
3	1004099-6	2	BUSHING
4	1008878-9	4	BUSHING
5	0918848-3	2	PIN, dowel
6	1008892-0	1	PIN, Top
7	2019582-2	4	SNAP RING
8	0922887-5	2	FITTING, grease
9	1008893-8	1	PIN, bottom
10	1008018-2	2	WASHER, Thrust
10A	1010539-2	1	WASHER, Wide rim
11	0918750-1	2	RETAINER, Pin
		1	0912895-0 Capscrew
		1	0904369-6 Lockwasher
12	1008165-1	2	PIN, Swing Cylinder Rod
13	1001637-6	*	WASHER
14	1008900-1	4	PIN, Trunion
		4	0916314-8 Capscrew
		4	0904208-6 Lockwasher
15	1008181-8	2	CYLINDER ASSY., Swing (see Swing Cylinder Assy. for Component Parts)
16	1001637-6	4	WASHER

\* Use As Required



**STABILIZER, PAD AND STABILIZER CYLINDER**

ITEM	NUMBER	QTY	DESCRIPTION
1	1002008-9	2	CYLINDER ASSY., Stabilizer (see Stabilizer Cylinder Assy. for Component Parts)
2	1008243-6	2	PIN, Stabilizer Cylinder Base
3	0928179-1	8	SNAP RING
4	1008127-1	2	STABILIZER ASSY., (each Assy. incl. 2 of item 5 & 1 of item 6)
5	2017929-7	4	BUSHING
6	0922887-5	2	FITTING, Grease
7	1008139-6	2	PIN, Stabilizer Pivot
8	2019582-2	4	SNAP RING
9	1008140-4	2	PIN, Stabilizer Cylinder Rod
10	1008134-7	2	PAD ASSY., Stabilizer
		4	0913105-3 Capscrew
		4	912441 Lockwasher
		4	0910195-7 Nut
11	0913743-1	8	WASHER
12	1001637-6	4	WASHER

**STABILIZER STREET PAD**

ITEM	NUMBER	QTY	DESCRIPTION
1	1002266-3	2	PLATE, Adaptor
2	1000856-3	2	PAD, Street
3	0923292-7	8	CAPSCREW
		1	0919332-7 Lockwasher
		1	0913160-8 Nut
4	0921176-4	8	CAPSCREW
		1	0916966-5 Lockwasher