

**Parts  
Catalog**

**460**  
**SERIES C**  
**TRACTOR SCRAPER**

(TRACTOR S/N 5001 - UP  
and 13U05501 - UP)

(SCRAPER S/N 4501 - UP  
and 82M05001 - UP)



**NOTICE**

Allis-Chalmers Corporation and FIAT S.p.A. entered into a joint venture agreement to combine their manufacture, sale and service of construction machinery products throughout the world after January 1, 1974.

In view of the new enterprise, wherever in this publication reference is made to Allis-Chalmers or your Allis-Chalmers dealer, such reference is intended to identify FIAT-ALLIS Construction Machinery Inc. or your FIAT-ALLIS dealer.

**CONSTRUCTION MACHINERY DIVISION  
SPRINGFIELD, ILLINOIS 62708 U. S. A.**

**FORM 0686177-7**

REPLACES 0199747-7

## AVOID ACCIDENTS

Most accidents, whether they occur in industry, on the farm, at home or on the highway, are caused by the failure of some individual to follow simple and fundamental safety rules or precautions. For this reason **MOST ACCIDENTS CAN BE PREVENTED** by recognizing the real cause and doing something about it before the accident occurs.

Regardless of the care used in the design and construction of any type of equipment there are many conditions that cannot be completely safeguarded against without interfering with reasonable accessibility and efficient operation.

A careful operator is the best insurance against an accident.  
The complete observance of one simple rule would prevent many thousand serious injuries each year.  
That rule is:

*Never attempt to clean, oil or adjust a machine while it is in motion.*

NATIONAL SAFETY COUNCIL

### WARNING

On machines having hydraulically, mechanically, and/or cable controlled equipment (such as shovels, loaders, dozers, scrapers, etc.) be certain the equipment is lowered to the ground before servicing, adjusting and/or repairing. If it is necessary to have the hydraulically, mechanically, and/or cable controlled equipment partially or fully raised to gain access to certain items, be sure the equipment is suitably supported by means other than the hydraulic lift cylinders, cable and/or mechanical devices used for controlling the equipment.

ADDITIONAL PUBLICATIONS AVAILABLE  
FOR  
MODEL 460 SERIES C TRACTOR SCRAPER

(See NOTE below)

<u>DESCRIPTION</u>	<u>SERIAL NO.</u>	<u>FORM NO.</u>			
		ENGLISH	ESPAÑOL (Spanish)	PORTUGUES (Portuguese)	FRANCAIS (French)
<u>PARTS CATALOGS</u>					
Tractor Scraper . . . . . All	0686177-7				
Cab Glass Data . . . . . All	0626019-4				
<u>OPERATOR'S MANUAL</u>					
Tractor Scraper . . . . . All	0199748-5				
<u>SERVICE MANUALS</u>					
Final Drive, Differential and Brakes . . . . . All	0188402-2				
Electrical System . . . . . All	0680006-4				
Hydraulic System . . . . . All	3100268-6				
Power Steering (Hydrostatic) . . All	3104500-8				
Transmission (Allison) . . . . . All	SA-1110D*				
Engine (GM-Detroit Diesel) . . All	6SE-184**				

NOTICE

CONSULT ALLIS-CHALMERS CONSTRUCTION MACHINERY  
DEALER FOR PUBLICATIONS.

SEE CONSTRUCTION MACHINERY TECHNICAL PUBLICATIONS  
INDEX (FORM 0658800-8) FOR ALL AVAILABLE PUBLICATIONS.

PUBLICATIONS INDEX (FORM 0658800-8) IS AVAILABLE FREE  
FROM YOUR DEALER.

\*OBTAIN FROM AUTHORIZED ALLISON DEALER

\*\*OBTAIN FROM AUTHORIZED DETROIT DIESEL DEALER

## IMPORTANT

The terms "right" and "left" used throughout this parts list are determined by facing the direction of forward travel.

Attaching parts such as bolts, nuts, rivets, screws, washers, etc., are indented immediately following the parts which they attach.

Parts indicated with a square (□) are also available in packaged sets. Refer to section titled "PACKAGED PARTS".

### INSTRUCTIONS FOR ORDERING PARTS

ALWAYS GIVE THE PERTINENT MODEL AND SERIAL NUMBER. (Locations shown on page 3)

For Detroit Diesel engines, parts orders must be referred to authorized Detroit Diesel dealer, stating Engine Model Number and Unit Number, from the engine Option plate. (For location of Option plate, see page 3.)

To obtain parts promptly, give part name and part number.

Give post office address, town, county and state where parts are to be shipped. Also specify whether material is to be shipped by freight, express or parcel post.

Order parts from the dealer covering the local territory.

Confirm all telephone or telegraph orders in writing.

Parts for standard motor accessories such as generators and starting motors should be ordered from authorized Service Stations maintained by manufacturers of these units throughout the country.

No credit will be allowed on parts unless they are returned to the dealer from whom they were purchased; from there they will be returned, at the customer's expense, to the factory for inspection.

Unless claims for shortages or errors are made immediately upon receipt of goods, they will not be considered.

When broken goods are received, a full description of the damage should be made by the carrier agent on the freight bill. If this description is insisted upon, full damage can always be collected from the transportation company.

No responsibility is assumed for delay or damage to merchandise while in transit. Our responsibility ceases upon delivery of shipment to the transportation company from whom a receipt is received showing that shipment was in good condition when delivered to them; therefore, claims (if any) should be filed with the transportation company and not with Allis-Chalmers.

The right is reserved to change the construction or material of any parts where it seems desirable to do so without incurring the obligation of installing such changes on units already delivered.



460 SERIES C TRACTOR SCRAPER

T-77440

## MODEL IDENTIFICATION

The models and their identifying symbols are indicated below. This symbol is stamped in front of the model serial number on each unit.

MODEL SYMBOL	ENGINE MODEL	TRANSMISSION MODEL	DESCRIPTION
T460 (Series C)	Detroit Diesel 12V - 71N	CLBT 5960-4	Power Shift Tractor
S460			Scraper

## SERIAL NUMBER LOCATIONS

On all parts orders and all correspondence relative to the 460 Series C Tractor Scraper, it is necessary that the tractor and scraper serial number be given. Such major components as engine, transmission and converter, have serial numbers which should also be given to properly identify the unit and component. These will assure obtaining the correct replacement parts and/or information.

The tractor serial number is stamped on the left side of the tractor mainframe at the front.

The scraper serial number is stamped on the left side of the scraper bowl at the rear.

The transmission model and serial number is on the nameplate on the left, bottom side (viewed from output end) of the output drive cover housing.

The engine serial number and model number are stamped on the right side of the cylinder block (Fig. 1) and the engine option plate (Fig. 2) attached to one of the valve rocker covers.

Therefore, with any order for parts, the model and serial numbers of the engine should be given. In addition, if a type number is shown on the option plate this number should be included in the parts order.

### NOTE

All parts and service pertaining to the Detroit Diesel engine included in this publication are to be obtained from an Authorized Detroit Diesel Distributor or Service Dealer.

## RECORD YOUR SERIAL NUMBERS BELOW

TRACTOR SERIAL NO. \_\_\_\_\_

ENGINE SERIAL NO. \_\_\_\_\_

ENGINE MODEL NO. \_\_\_\_\_

TRANSMISSION SERIAL NO. \_\_\_\_\_

SCRAPER SERIAL NO. \_\_\_\_\_

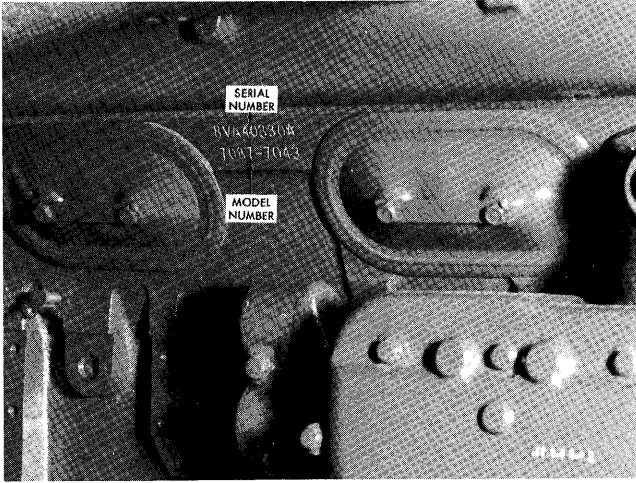


Fig. 1 Engine Serial Number Location  
(T-74097)

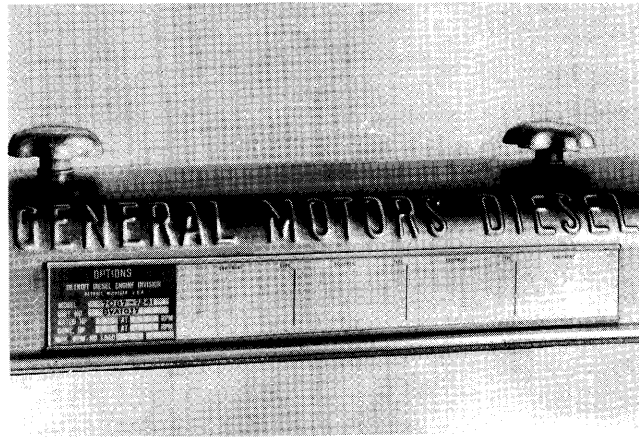


Fig. 2 Engine Option Plate  
(T-74096)

### MODEL SERIAL NUMBER

Models are identified by an 8-character combination of letters and numerals.

**\*SERIAL NUMBER**, consisting of all 8 characters must always be submitted for positive identification of your machine. This Point Cannot Be Over-emphasized.

MODEL	*SERIAL NO.	
	PRODUCT CODE	UNIT NO.
T 460 C (Tractor)	1 3 U	0 5 5 0 1
S 460 C (Scraper)	8 2 M	0 5 0 0 1

ALPHABETICAL INDEX

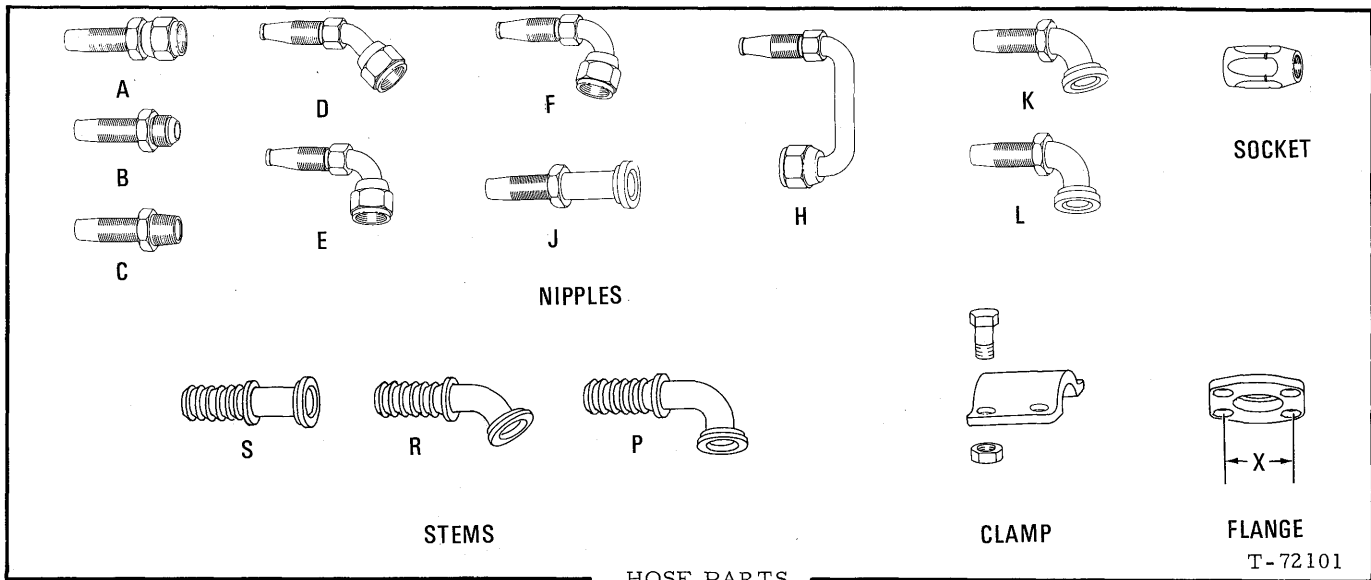
Air Cleaner . . . . .	20	Exhaust Pipe . . . . .	19
Apron . . . . .	215	Fan . . . . .	13
Axle, scraper . . . . .	82	Fan, defroster . . . . .	217
Axle, tractor . . . . .	78	Fenders . . . . .	98, 214
Batteries . . . . .	112	Filter, engine oil . . . . .	15
Cover . . . . .	92	Filter, final drive . . . . .	84
Bowl, scraper . . . . .	210	Filter, fuel . . . . .	18
Brakes . . . . .	88, 91	Filter, hydraulic . . . . .	168
Lines . . . . .	90, 130, 148	Filter, transmission . . . . .	72
Cab . . . . .	218	Final Drive . . . . .	74
Camshaft, scraper brake . . . . .	82	Frame, engine . . . . .	92
Cluster Assembly, power . . . . .	156	Frame, scraper . . . . .	208
Lines . . . . .	130	Gauge, shift indicator . . . . .	108
Column Assembly, steering . . . . .	104	Gear, spiral bevel . . . . .	74
Compartment, operator . . . . .	96	Gears, final drive and idler . . . . .	78
Compressor . . . . .	13	Gear Case . . . . .	92
Belt . . . . .	13	Generator . . . . .	114
Governor . . . . .	123	Belt . . . . .	13
Lines . . . . .	124	Governor, compressor . . . . .	123
Cylinder, apron . . . . .	204	Grille . . . . .	95
Lines . . . . .	178	Heater, cab . . . . .	216
Cylinder, bowl . . . . .	202	Hitch Assembly . . . . .	160
Lines . . . . .	178	Linkage . . . . .	198
Cylinder, brake . . . . .	156, 158	Hoods . . . . .	95
Cylinder, ejector . . . . .	206	Horn, air . . . . .	143
Lines . . . . .	178	Lines . . . . .	142
Cylinder Steering . . . . .	198	Hose Parts . . . . .	8
Lines . . . . .	103, 170	Hydraulics, scraper . . . . .	172 thru 178
Differential . . . . .	76	Idler, final drive . . . . .	78
Drive, pump . . . . .	162	Indicator, speed shift . . . . .	108
Drum, brake . . . . .	86	Injector, alcohol . . . . .	140
Edges, cutting . . . . .	210	Instruments . . . . .	108
Ejector . . . . .	212	Lamp, indicator . . . . .	111
Electrical System . . . . .	108 thru 120	Lever, apron cylinder . . . . .	204
Elements		Levers, scraper valve . . . . .	194
Air Cleaner . . . . .	20	Light Assemblies . . . . .	116 thru 120
Final Drive Oil Filter . . . . .	84	Wiring . . . . .	114, 118
Hydraulic Filter . . . . .	168	Lines, compressor . . . . .	124, 126
Transmission Filter . . . . .	72	Lines, fuel . . . . .	18
Engine Assembly . . . . .	13	Lines, hand brake . . . . .	136, 138
Exchanger, heat . . . . .	28	Lines, tractor protection valve . . . . .	130
Tubes . . . . .	28	Motor, starting . . . . .	113
		Mounting, engine and transmission . . . . .	13, 23
		Muffler . . . . .	19

(Continued)



ALPHABETICAL INDEX (Continued)

Numerical Index . . . . .	225	Transmission (Continued)	
Packaged Parts . . . . .	10	Planetary, splitter low and high . . .	58
Painting and Marking . . . . .	201	Pump, converter . . . . .	35
Panel, instrument . . . . .	108	Pump, rear output oil . . . . .	68
Pedal, brake . . . . .	152	Pump, pressure oil. . . . .	42
Pedal, throttle . . . . .	99	Pump, scavenge oil. . . . .	42
Primer System, engine starting. . . .	107	Shaft, turbine . . . . .	46
Puller, bearing . . . . .	223	Valve, actuator air . . . . .	51
Pump, final drive oil . . . . .	84	Valve, control . . . . .	48
Pump, scraper. . . . .	164	Valve, lockup clutch . . . . .	54
Pump, steering . . . . .	164	Valve, retarder. . . . .	52
Radiator . . . . .	24, 26	Tubes, heat exchanger. . . . .	28
Reservoir, air . . . . .	124, 126, 148	Universal Assembly . . . . .	81
Reservoir, hydraulic . . . . .	166	Valve, alcohol injector . . . . .	140
Rollover Protection Beam . . . . .	222	Valve, drain . . . . .	146
Rotochamber, scraper brake . . . . .	158	Lines . . . . .	144
Lines . . . . .	148	Valve, drain control. . . . .	145
Seat Assembly . . . . .	100	Valve, emergency . . . . .	150
Shift, transmission . . . . .	30	Lines . . . . .	148
Slack Adjuster, scraper brake . . . .	158	Valve, hand brake . . . . .	154
Starter . . . . .	113	Lines . . . . .	136, 138
Steering Hydraulics . . . . .	103, 170	Valve, release. . . . .	130
Steering Wheel. . . . .	103	Valve, relief. . . . .	177, 181
Tachograph. . . . .	121	Valve, scraper. . . . .	182, 187
Tachometer . . . . .	122	Levers . . . . .	194
Tank, fuel . . . . .	16	Plungers . . . . .	190
Lines . . . . .	18	Valve, steering . . . . .	196
Tools . . . . .	223, 224	Lines . . . . .	103, 170
Transmission . . . . .	33	Valve, tractor protection . . . . .	128
Actuator, retarder valve . . . . .	51	Lines . . . . .	130
Brake . . . . .	70	Valve, treadle brake. . . . .	152
Brake Control. . . . .	134	Lines . . . . .	130, 132
Clutch, high. . . . .	64	Wheel. . . . .	86
Clutch, intermediate . . . . .	62	Wheel, steering . . . . .	103
Clutch, low . . . . .	60	Column . . . . .	104
Clutch, reverse. . . . .	66	Windshield . . . . .	96
Clutch, splitter high . . . . .	58	Wiring, instrument panel . . . . .	108
Clutch, splitter low. . . . .	56		
Converter, torque . . . . .	35		
Filter . . . . .	72		
Housing, converter . . . . .	38		
Housing, output drive . . . . .	68		
Housing, retarder . . . . .	46		
Housing, transmission . . . . .	44		
Output Shaft. . . . .	60		
Planetary, intermediate . . . . .	62		
Planetary, low . . . . .	60		
Planetary, reverse. . . . .	66		



**NOTE:** Refer to left hand column for identity of original hose. Hose is crimped-type (fittings not re-usable) unless otherwise noted. Equivalent hose assembly may be constructed in the field from data indicated.

ORIGINAL HOSE ASSEMBLY NO. (See Note)	BULK HOSE (25' roll)	HOSE LENGTH (inches)	NIPPLE or STEM (#1 end)		NIPPLE or STEM (#2 end)		SOCKET (both ends)	CLAMP (both ends)		
			NIPPLE or STEM	Type	NIPPLE or STEM	Type		Clamp (4)	Capscrew (8)	Nut (8)
0193230-0	0920730-9	16	0923274-5	J	0193245-8	L	0923275-2			
0193232-6	0920983-4	14-1/2	0923256-2	J	0923265-3	L	0920987-5			
0193237-5	0920725-9	15-5/8	0919769-0	C	0919769-0	C	0919768-2			
0193640-0	0920725-9	18-1/2	0919769-0	C	0919769-0	C	0919768-2			
0194234-1	0920732-5	52-1/4	0922737-2	C	0922737-2	C	0920569-1			
0194235-8	0920732-5	56-1/4	0922737-2	C	0922737-2	C	0920569-1			
0194343-0	0920728-3	44-1/2	0921034-5	A	0919467-1	C	0919282-4			
0197292-6	0920794-5	36	0923253-9	J	0923258-8	K	0920972-7			
0199223-9	0919196-6	70-1/4	0920301-9	A	0920301-9	A	0919143-8			
0199232-0	0919196-6	54	0920301-9	A	0920301-9	A	0919143-8			
0199446-6	0919218-8	41-3/4	0920303-5	A	0919081-0	E	0919076-0			
0199610-7	0920729-1	71-1/2	0925952-4	K	0922141-7	L	0920569-1			
0199622-2	0193723-4	32-3/4	0196769-4	R	0193721-8	R		0193724-2	0916423-7	0910195-7
0199623-0	0193727-5		0193725-9	R	0199669-3	R		0193728-3	0916396-5	0910986-9
*0686320-3	0920733-3	30	0923918-3	L	0193245-8	L	0923275-2			
*0686323-7	0920982-6	26-1/4	0922937-8	L	0190183-4	L	0920986-7			
*0686324-5	0920983-4	19-1/4	0923256-2	J	0923265-3	L	0920987-5			
*3104581-8	0920982-6	21-1/8	0925753-6	K	0196485-6	K	0920986-7			
3106456-1	0920732-5	42	0922966-7	A	0921120-2	E	0920569-1			
3106457-9	0920732-5	38	0922966-7	A	0921120-2	E	0920569-1			

\* Original hose with re-usable components

MEMO

PACKAGED PARTS

PACKAGE NO.	DESCRIPTION
0199780-8	EMBLEM SET (for machines painted Allis-Chalmers yellow)(See PAINTING AND MARKING)
0199782-4	EMBLEM SET (for machines painted other than Allis-Chalmers yellow) (See PAINTING AND MARKING)
3103590-0	SEAL AND GASKET KIT, transmission overhaul (for use with transmission prior to serial No. 49007)
1	0192416-6 GASKET
1	0194504-7 SEAL, O-ring
1	0194509-6 RING, step joint seal
3	0194529-4 RING, hook type seal
1	0194530-2 RING, hook type seal
1	0194531-0 RING, hook type seal
1	0194539-3 RING, seal
1	0194543-4 STRIP, pitot tube locking
6	0194561-7 STRIP
6	0194585-6 RING, step joint seal
2	0194587-2 RING, piston seal
2	0194589-8 SEAL KIT
1	0194607-8 RING, seal
1	0194617-7 RING, compression
3	0194619-3 HOSE, jumper
3	0194622-7 SEAL KIT
2	0194623-5 SEAL KIT
1	0194646-6 SEAL KIT
1	0194647-4 GASKET, output drive housing
1	0194655-7 GASKET, rear bearing retainer
1	0194672-2 GASKET, separating plate
1	0194673-0 GASKET, separating plate
1	0194679-7 SEAL
1	0194685-4 WASHER
1	0194687-0 SEAL
1	0194688-8 WASHER
1	0194689-6 GASKET, drive sleeve
1	0194691-1 GASKET, oil pan
1	0194699-5 GASKET, discharge tube
1	0194710-0 GASKET, control valve body
1	0194719-1 GASKET, cover
1	0194721-7 GASKET, trimmer valve
1	0194725-8 SEAL, oil wiper-scraper
1	0194733-2 GASKET, lockup valve
2	0194740-7 RING, seal
1	0194742-3 RING, seal
1	0194745-6 GASKET, retarder valve
1	0194755-5 GASKET, retarder valve cover
1	0194758-9 GASKET, annular
1	0194813-2 GASKET, annular
1	0194829-8 RING, seal
1	0194830-5 RING, seal
1	0194879-3 GASKET, oil transfer plate
2	0194880-1 GASKET, retarder housing
1	0194881-9 GASKET, regulator valve
2	0194884-3 O-RING
2	0196580-5 SEAL
2	3021056-1 GASKET, cover
1	3021080-1 GASKET, lub. valve cover
1	3021088-1 GASKET, input pressure pump
1	3044489-7 GASKET, detent plug
1	3100589-5 RING, seal

} Not 460 - discard

(Continued)

PACKAGED PARTS (Continued)

PACKAGE NO.	DESCRIPTION	
2	-----	GASKET (#5573960)
1	-----	GASKET (#5577428)
1	-----	GASKET (#5577429)
3	-----	RING, seal (#6703026)
1	-----	SEAL (#6703159)
2	-----	GASKET (#6758198)
2	-----	GASKET (#6758442)
1	-----	RING, seal (#6758559)
1	-----	GASKET (#6758563)
1	-----	GASKET (#6768523)
1	-----	GASKET (#6770521)
1	-----	GASKET (#6770575)
1	-----	GASKET (#6770608)
1	-----	GASKET (#6770615)
1	-----	GASKET (#6771965)
1	-----	GASKET (#6771966)
1	-----	WIPER (#6772608)
1	-----	SEAL KIT (#6773077)
1	-----	SEAL (#6773201)
1	-----	WIPER (#6774325)
3	-----	RING, seal (#6775115)
1	-----	RING, seal (#6775116)
2	-----	RING, seal (#6775117)
2	-----	RING, seal (#6775118)
1	-----	RING, seal (#6775119)
1	-----	RING, seal (#6775120)
3	-----	EXPANDER (#6775134)
1	-----	EXPANDER (#6775135)
2	-----	EXPANDER (#6775136)
1	-----	EXPANDER (#6775138)
1	-----	EXPANDER (#6775139)
2	-----	EXPANDER (#6776434)
1	-----	SEAL (#6776792)
1	-----	INSTRUCTION SHEET NO. 6773078
1	-----	INSTRUCTION SHEET NO. 6773893
1	-----	INSTRUCTION SHEET NO. 6778884

Not 460 - discard

3104963-8

SEAL AND GASKET KIT, transmission overhaul (For use with transmission serial No. 49007 and up)

1	0194504-7	SEAL, O-ring
1	0194509-6	RING, step joint seal
3	0194529-4	RING, hook type seal
1	0194530-2	RING, hook type seal
1	0194531-0	RING, hook type seal
1	0194539-3	RING, seal
1	0194543-5	STRIP, pitot tube locking
5	0194585-6	RING, step joint seal
6	0194561-7	STRIP
2	0194587-2	RING, piston seal
1	0194607-8	RING, seal
1	0194617-7	RING, compression
3	0194619-3	HOSE, jumper
1	0194647-4	GASKET, output drive housing
1	0194655-7	GASKET, rear bearing retainer
1	0194672-2	GASKET, separating plate
1	0194673-0	GASKET, separating plate
1	0194679-7	SEAL
1	0194685-4	WASHER
1	0194687-0	SEAL
1	0194688-8	WASHER
1	0194689-6	GASKET, drive sleeve

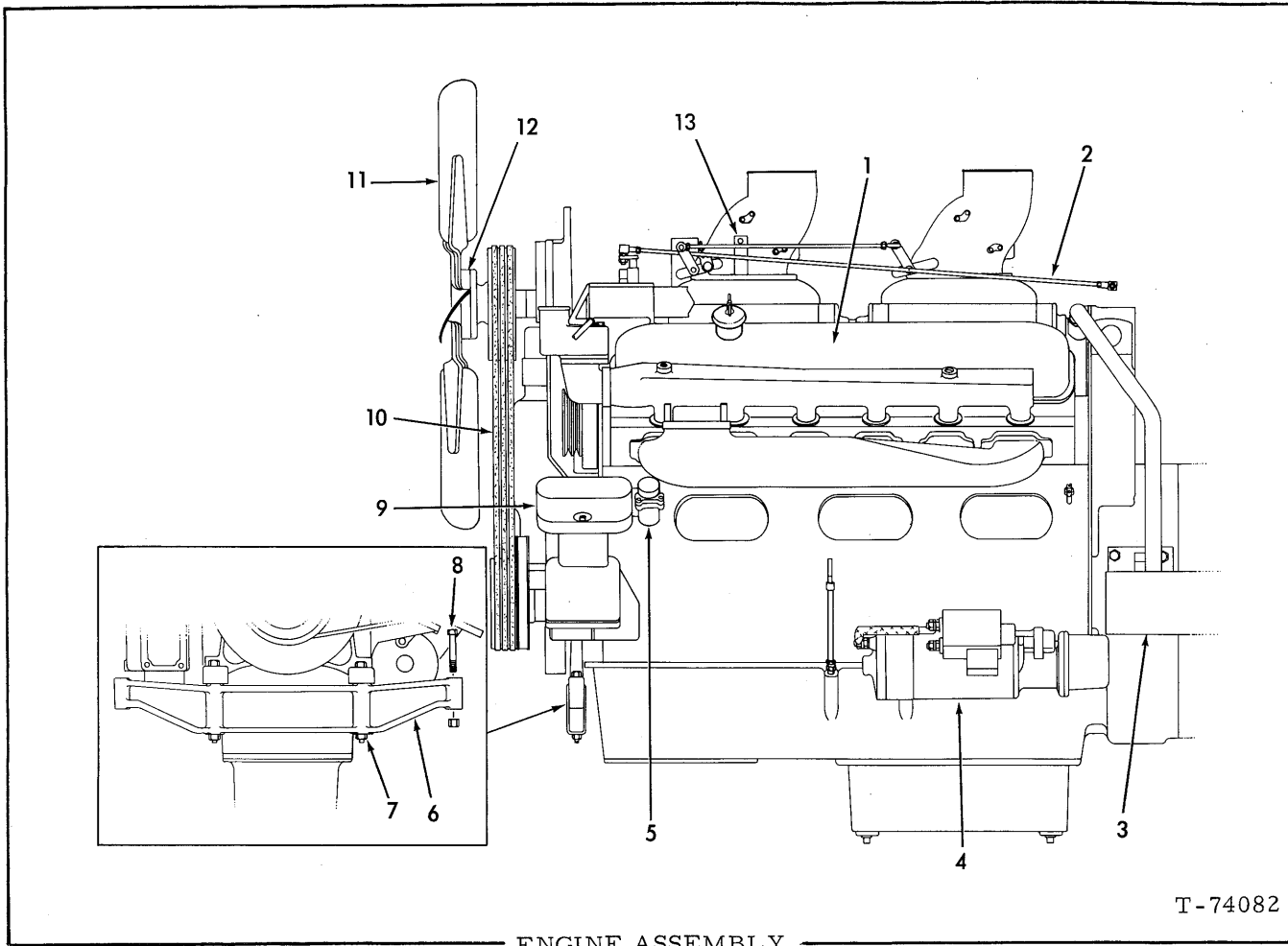
Not 460 - discard

(Continued)

PACKAGED PARTS (Continued)

PACKAGE NO.	DESCRIPTION
1	0194691-1 GASKET, oil pan
2	0194699-5 GASKET, discharge tube
1	0194710-0 GASKET, control valve body
1	0194719-1 GASKET, cover
1	0194721-7 GASKET, trimmer valve
1	0194725-8 SEAL, oil wiper-scraper
1	0194733-2 GASKET, lockup valve
2	0194740-7 RING, seal
1	0194742-3 RING, seal
1	0194745-6 GASKET, retarder valve
1	0194755-5 GASKET, retarder valve cover
1	0194758-9 GASKET, annular
1	0194813-2 GASKET, annular
1	0194829-8 RING, seal
1	0194830-5 RING, seal
1	0194879-3 GASKET, oil transfer plate
2	0194880-1 GASKET, retarder housing
1	0194881-9 GASKET, regulator valve
2	0194884-3 O-RING
2	0196580-5 RING, seal
1	0199442-5 SEAL KIT
2	3021056-1 GASKET, cover
1	3021080-1 GASKET, lub. valve cover
1	3021088-1 GASKET, input pressure pump
1	3044489-7 GASKET, detent plug
1	3100589-5 RING, seal
2	3105024-8 SEAL
1	3105026-3 SEAL
3	3105028-9 SEAL
2	3105032-1 SEAL
1	4379408-0 GASKET
2	----- GASKET (#5573960)
1	----- GASKET (#5577428)
1	----- GASKET (#5577429)
3	----- RING, seal (#6703026)
1	----- SEAL (#6703159)
2	----- GASKET (#6758442)
1	----- RING, seal (#6758559)
1	----- GASKET (#6758563)
1	----- GASKET (#6768523)
1	----- GASKET (#6770521)
1	----- GASKET (#6770575)
1	----- GASKET (#6771965)
1	----- GASKET (#6771966)
1	----- RING, seal (#6832482)
1	----- RING, seal (#6832483)

Not 460 - discard



T-74082

ENGINE ASSEMBLY

ITEM	PART NO.	QTY.	DESCRIPTION
1	-----	1	ENGINE ASSY., Model 12V-71N No. 7123-7000 (Includes Starter, Generator, Fuel Filters, Air Compressor, Drive Belts, but does not include Fan, Exhaust Stack, or air compressor Governor. (See NOTE, below)
2	-----	1	ROD (See page 99)
3	-----	1	MOUNTING (See page 23)
4	-----	1	STARTER (See NOTE, below)
5	-----	1	GOVERNOR (See page 123)
6	0199095-1	1	HANGER
7	0926869-9	2	CAPSCREW, 3/4" NF x 6-1/2"
	0916591-1	2	NUT, elastic stop, 3/4" NF
8	0925740-3	2	CAPSCREW
	0916589-5	2	NUT, elastic stop, 5/8" NF
9	-----	1	COMPRESSOR, air (See NOTE, below)
	0917191-9	1	NIPPLE, pipe, 3/8" NPT x 1-1/8"
	0901678-3	1	ELBOW, pipe, 90°, 3/8" NPT
			} water inlet

(Continued)

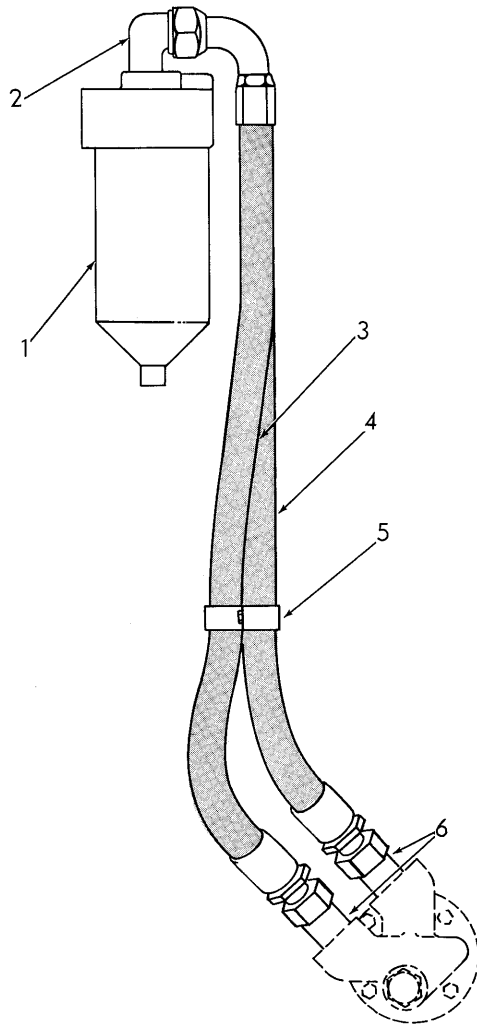
ENGINE ASSEMBLY (Continued)

ITEM	PART NO.	QTY.	DESCRIPTION
10	-----	-	BELT, fan/compressor/generator (See NOTE, below)
11	3100101-9	1	FAN (Prior to tractor unit #05501)
	3106452-0	1	FAN (Tractor unit #05501 and up)
12	0673468-5	1	SPACER
	0927233-7	4	CAPSCREW, 1/2" NF x 2-3/4"
	0912441-3	4	LOCKWASHER, 1/2"
	0911043-8	4	NUT, 1/2" NF
13	0199586-9	1	BRACKET
	0171317-1	1	CLAMP
	4254481-7	1	CLAMP
	0915809-8	1	CAPSCREW, 5/16" NC x 3/4"
	0904205-2	1	LOCKWASHER, 5/16"
	0910323-5	1	NUT, 5/16" NC

} Not Illustrated

NOTE: On Engine Assembly and components, Parts and Service must be obtained from authorized Detroit Diesel Dealer. For ordering instructions, see page 4.

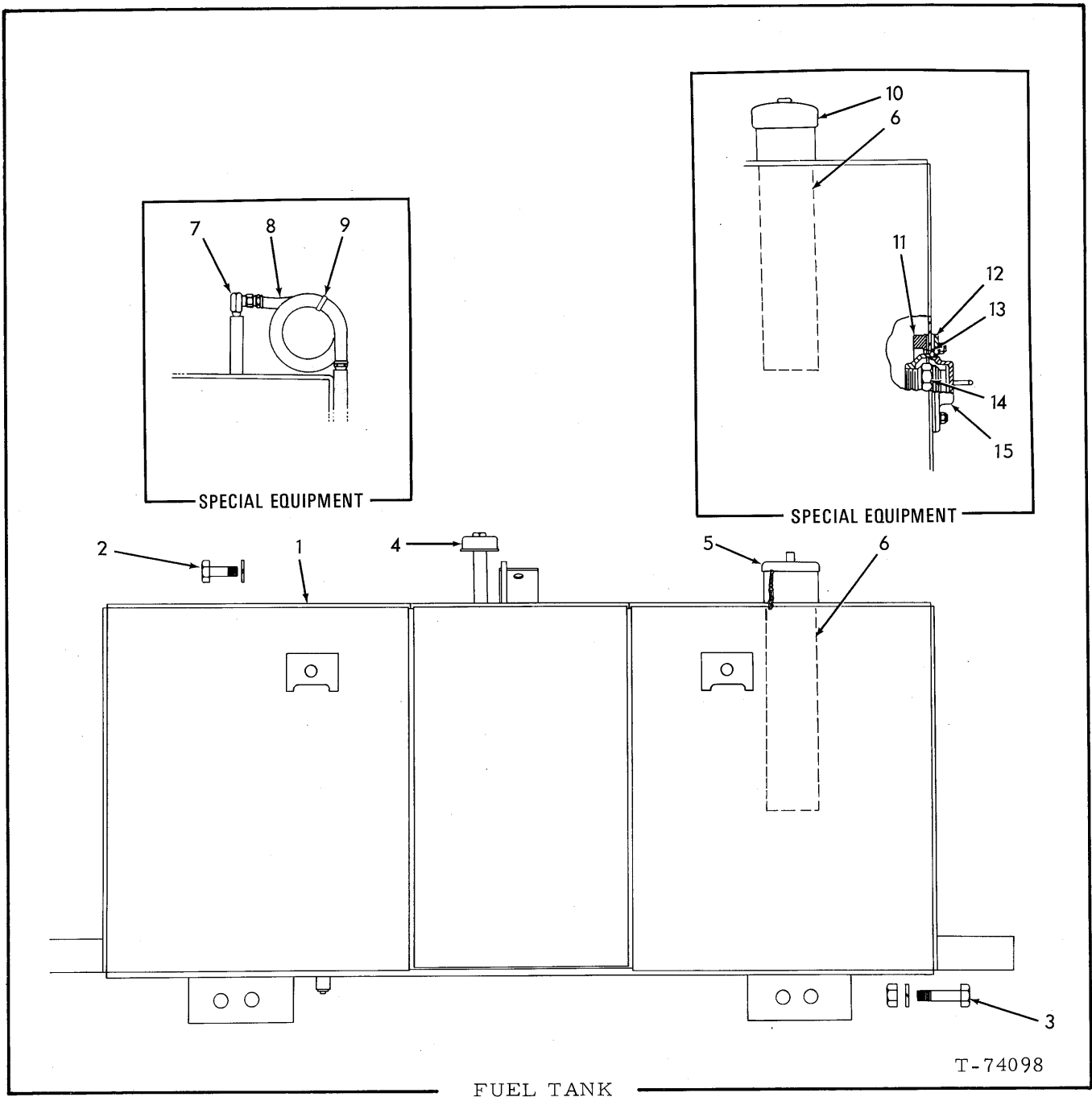




T-74100

ENGINE OIL FILTER LINES

ITEM	PART NO.	QTY.	DESCRIPTION
1	-----	2	FILTER ASSY. NOTE: For Parts and Service, refer to authorized Detroit-Diesel Dealer. For ordering instructions, see page 4.
2	0920687-1	2	ELBOW, male, 90°, flared, 1-1/4" tube, 1-1/4" PT
3	{ 0199216-3	1	HOSE ASSY. (Prior to tractor unit #05501)
	{ 3106456-1	1	HOSE ASSY. (See HOSE PARTS) (Tractor unit #5501 and up)
4	{ 0199217-1	1	HOSE ASSY. (Prior to tractor unit #05501)
	{ 3106457-9	1	HOSE ASSY. (See HOSE PARTS) (Tractor unit #5501 and up)
5	0197005-2	2	CLAMP
	0916273-6	2	CAPSCREW, 3/8" NC x 1-3/4"
	0922464-3	2	WASHER, plain
6	0920694-7	2	ELBOW, male, 45°, flared, 1-1/4" tube, 1-1/4" PT



T-74098

FUEL TANK

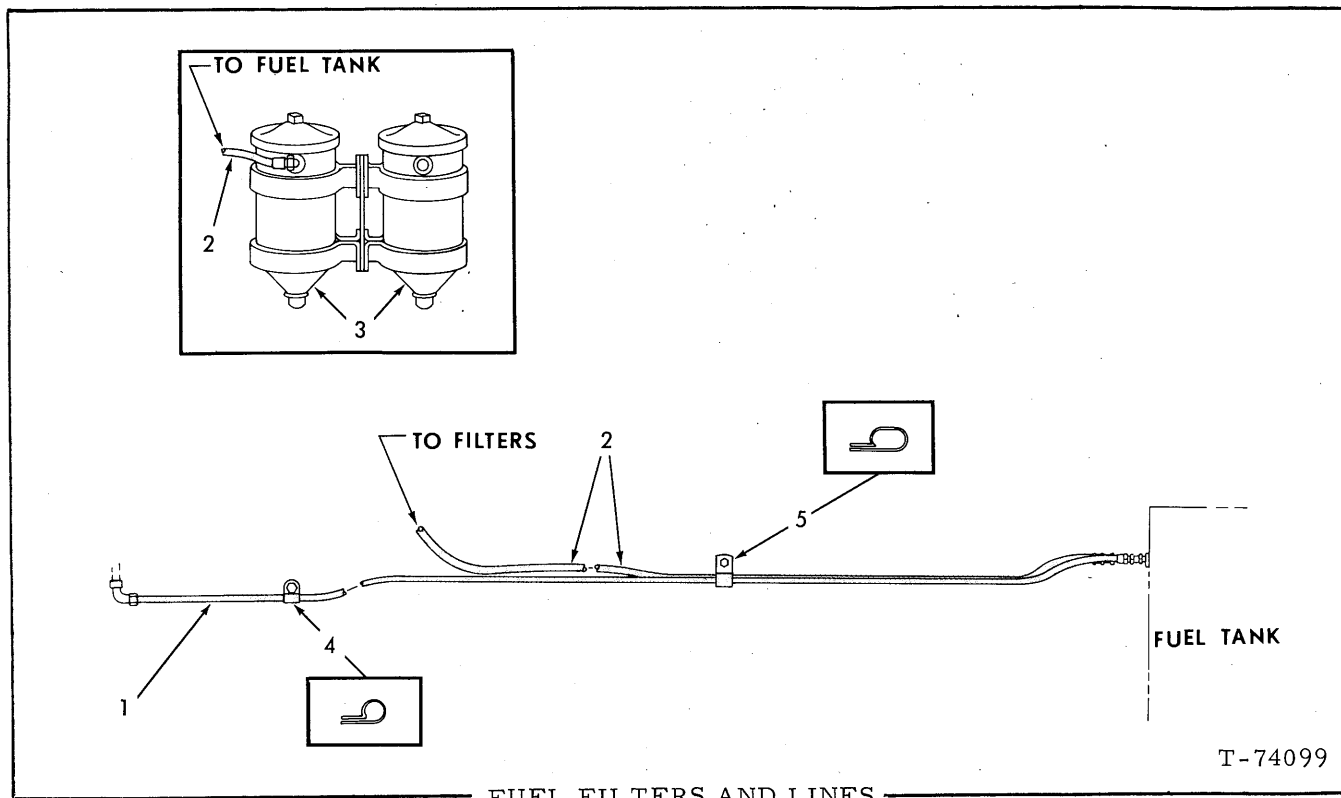
\* - Standard Equipment  
 \*\* - Special Equipment, High-Speed Fueling

ITEM	PART NO.	QUANTITY	DESCRIPTION
1	199142	* 1	TANK ASSY., (Includes plug indented below and items 4 thru 6)
	199882	** - 1	TANK ASSY., (Special Equipment, High-Speed Fueling) (Includes plug indented below and items 6 thru 15)
	905262	1 1	PLUG, pipe, 3/4"

(Continued)

FUEL TANK (Cont.)

ITEM	PART NO.	QUANTITY		DESCRIPTION
		*	**	
2	912895	2	2	CAPSCREW, 3/4" NC x 2"
	904369	2	2	LOCKWASHER, 3/4"
3	916376	4	4	CAPSCREW, 1" NF x 3-1/2"
	910916	4	4	WASHER, 1"
	910174	4	4	NUT, 1" NF
4	181976	1	-	BREATHER
5	195466	1	-	CAP ASSY. (includes Gasket and Chain)
6	182755	1	1	STRAINER
7	184694	-	1	UNION, adapter
8	-----	-	1	HOSE, 1/2" I. D. x 22" (order item 16)
	925239	-	2	FITTING, hose, 1/2" I. D.
9	198775	-	1	STRAP
10	3100105	-	1	CAP
	655416	-	1	GASKET, cap (not illustrated)
	901652	-	1	PLUG, pipe, 1/4"NPT
11	3100014	-	1	FLANGE ASSY. (includes two Flanges, also Gaskets and hardware indented below)
	3100021	-	2	GASKET, flange
	919350	-	6	STUD, 1/2" NC x 2"
	904208	-	6	LOCKWASHER, 1/2"
	910325	-	6	NUT, 1/2" NC
12	3100013	-	1	HOUSING ASSY. (includes items 13 and 14)
13	3100017	-	1	O-RING
14	-----	-	1	ADAPTER ASSY. (not serviced separately - order item 12)
15	3100012	-	1	CAP ASSY. (includes chain)
16	920721	-	-	HOSE, low pressure, 1/2" I. D. x 25 ft. long (use as required)



FUEL FILTERS AND LINES

ITEM	PART NO.	QTY.	DESCRIPTION
1	-----	1	HOSE, 3/8" I. D. x 144" (Order item 6)
	0920806-7	2	FITTING, socketless, swivel, 3/8" I. D. hose
	0919172-7	1	CONNECTOR, male, flare, 3/8" tube, 3/8" NPT (At Fuel Tank)
	0923178-8	1	CONNECTOR, female, 3/8" tube, 1/4" NPT
	0914095-5	1	ELBOW, male, 1/4" NPT (First type)
	0919135-4	1	ELBOW, male, 3/8" tube, 1/4" NPT (Second type)
			} At Eng.
2	-----	1	HOSE, 1/2" I. D. x 185" (Order item 7)
	0920807-5	2	FITTING, socketless, swivel, 1/2" I. D. hose
	0919128-9	1	CONNECTOR, male, flare, 1/2" tube, 1/2" NPT (At Fuel Tank)
	0919195-8	1	ELBOW, male, flare, 1/2" tube, 1/2" NPT (At Filter)
3	-----	1	FILTERS, fuel NOTE: For parts and service refer to authorized Detroit-Diesel dealer. For ordering instructions, see page 4.
4	0196804-9	1	CLAMP
5	0196838-7	2	CLAMP
6	0920388-6	-	HOSE, low pressure, 3/8" I. D. x 25 ft. long (Use as required)
7	0920721-8	-	HOSE, low pressure, 1/2" I. D. x 25 ft. long (Use as required)