

**Parts
Catalog**

**260
SERIES A
TRACTOR SCRAPER**

TRACTOR SERIAL NOS. 8001 thru 9000,
98C09501 & UP

SCRAPER SERIAL NOS. 8001 thru 9000,
59L06001 & UP



ALLIS-CHALMERS

NOTICE

Allis-Chalmers Corporation and FIAT S.p.A. entered into a joint venture agreement to combine their manufacture, sale and service of construction machinery, products throughout the world after January 1, 1974.

In view of the new enterprise, wherever in this publication reference is made to Allis-Chalmers of your Allis-Chalmers dealer, such reference is intended to identify FIAT-ALLIS Construction Machinery Inc. or your FIAT-ALLIS dealer.

**CONSTRUCTION MACHINERY DIVISION
SPRINGFIELD, ILLINOIS 62708 U. S. A.**

FORM 0686342-7

REPLACES 0198542-3



SUPPLEMENT NO. 1

PARTS CATALOG FORM 0686342-7

260 SERIES A

(9-72)

ATTENTION: Insert this sheet into the front of publication as record of receipt. Replace or add pages in the publication according to instructions below.

Additional copies of this supplement are available. Please direct your request to *Allis-Chalmers, Technical Publications Department, Construction Machinery Division, Springfield, Illinois, 62708, U.S.A.*

Replace the following page: 106 (Revised)

Make the following changes: (All changes are underlined)

PAGE	ITEM	PART NO.	QTY.	DESCRIPTION
10		4394034-2		GASKET KIT (Change part No. to 4394034- <u>5</u>)
11		4394034-2		GASKET KIT (Change part No. to 4394034- <u>5</u>)
22	8	4390068-9	6	ROD ASSY. (Change part No. to 4390068- <u>7</u>)
27	21	4390294-8	4	ARM ASSY. (Change part No. to 4390294- <u>9</u>)
27	22	4336646-8	12	SCREW (Change part No. 4336646- <u>7</u>)
35	16	4386664-1	1	GASKET (Change part No. to 4386664- <u>9</u>)
36	24	0923575-7	1	O-RING (Change part No. to 0923575- <u>5</u>)
41	17	4388261-1	1	TUBE (Change part No. to 4388261- <u>2</u>)
43	18	4393356-7	1	TUBE (Change part No. to 4393356- <u>3</u>)
43	21	4393391-3	1	ELBOW (Change part No. to 4393391- <u>0</u>)
47	18	4255513-5	2	O-RING (Change part No. to 4255513- <u>6</u>)
81	3	4371107-7	12	WASHER (Change part No. to 4371107- <u>6</u>)
90	2	4392279-7	1	GASKET (Change part No. to 4392279- <u>8</u>)
102	48	0089107-5	1	CLAMP (Change part No. to 0089107- <u>7</u>)
117	—	0188246-4	1	CLUTCH ASSY. (Change part No. to 0188246- <u>3</u>)
117	1	0686054-9	1	BEARING (Change part No. to 0686054- <u>8</u>)
117	22	0685525-1	1	SHAFT AND CARRIER ASSY. (Change part No. to 0685525- <u>8</u>)
117	24	0686312-1	1	SHAFT ASSY. (Change part No. to 0686312- <u>0</u>)
118	36	0686574-7	1	BEARING (Change part No. to 0686574- <u>5</u>)
125	1	0686054-9	1	BEARING (Change part No. to 0686054- <u>8</u>)
125	22	0686598-7	1	SHAFT ASSY. (Change part No. to 0686598- <u>4</u>)
125	24	0686599-5	1	SHAFT ASSY. (Change part No. to 0686599- <u>2</u>)
135	18	0198004-8	1	HOSE ASSY. (Change part No. to 0198004- <u>4</u>)
151	5	0686290-9	1	MIRROR ASSY. (Change part No. to 0686290- <u>8</u>)
151	8	0686154-7	2	BRACKET (Change part No. to 0686154- <u>6</u>)
151	9	0927599-3	2	CLAMP (Change part No. to 0927599- <u>1</u>)
151	11	3105366-4	1	COMPARTMENT (Change part No. to 3105366- <u>3</u>)
151	12	3105385-6	1	COVER (Change part No. to 3105385- <u>3</u>)
169	38	0921977-3	4	CAPSCREW (Change part No. to 0921977- <u>5</u>)
169	49	0900515-2	2	CAPSCREW (<u>Delete this item</u>)
169	49 Add:	0900575-2	2	SCREW, machine, 1/4"NC x 5/8"
219	1	0919546-9	1	ELBOW (Change part No. to 0919546- <u>2</u>)
273	1	0683338-7	- 3	SEAL (Change part No. to 0683338- <u>8</u>)
274	23	3105994-1	20 -	PLUNGER (Change part No. to 3105994- <u>2</u>)
286	7	3106288-0	- 1	PLUNGER (Change part No. to 3106288- <u>8</u>)
289	9	0916309-9	6	CAPSCREW (Change part No. to 0916309- <u>8</u>)
289	11	0192544-6	1	PIN (Change part No. to 0192544- <u>5</u>)
297	7	0680706-1	1	BRACKET (Change part No. to 0680706- <u>9</u>)
298	6	0924159-5	4	BOLT (Change part No. to 0924159- <u>7</u>)
298	7	0182595-7	2	LUG (Change part No. to 0182595- <u>9</u>)

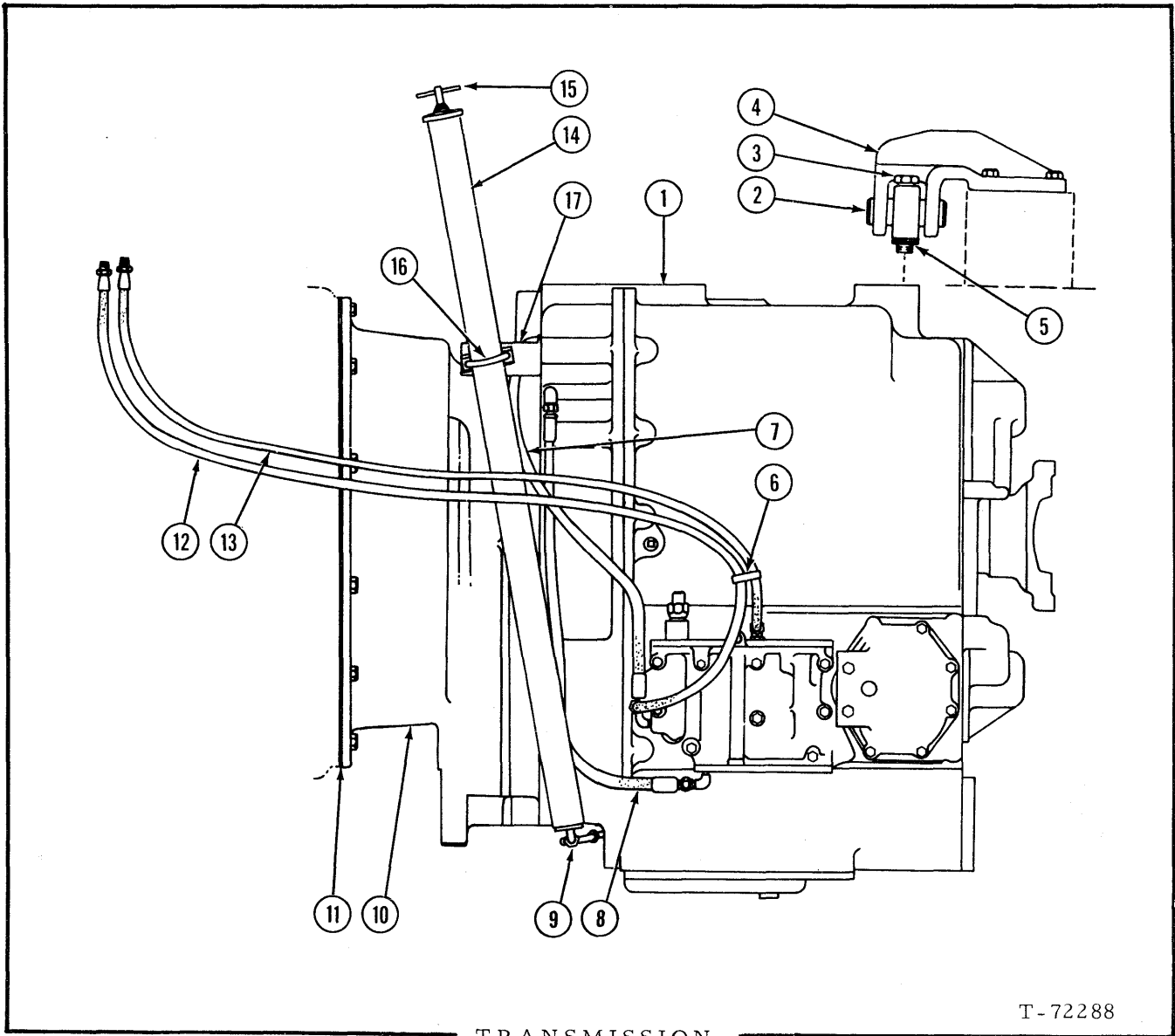
C

C

C

SHIFT LEVER

ITEM	PART NO.	QTY.	DESCRIPTION
1	198057	1	MOUNTING, shift (Tractors prior to unit #09920)
	671155	1	MOUNTING, shift (Tractors unit #09920 and up)
	921965	4	CAPSCREW, cad. pltd., 3/8"NC x 3/4"
	919385	4	WASHER, plain, 7/16" I. D.
2	148102	1	KNOB, lever
	910329	1	NUT, jam, 3/8"NF
3	194464	1	COLLAR ASSY. (welded)
4	194463	1	SPRING
5	194462	1	BAR
	913177	1	NUT, jam, 1/2" NF
6	188684	1	PLATE, shift
	922064	2	SCREW, 12 pt. 1/2" NC x 1"
	910244	2	WASHER, plain, 17/32"
7	198061	1	LEVER, shift
8	161052	1	RING, retaining
9	910889	4	WASHER, plain 1-5/8" (use as required)
10	188118	2	BEARING, flange-mounting
	915408	4	CAPSCREW, 3/8" NC x 3/4"
	922464	4	WASHER, 13/32" I. D. x 21/32" O. D.
	904206	4	LOCKWASHER, 3/8"
	910324	4	NUT, 3/8" NC
11	196871	1	ROD END (R. H. thd.)
	196947	1	ROD END (L. H. thd)
	916028	1	CAPSCREW, 1/2" NF x 1-3/4"
	922930	1	NUT, jam 1/2" NF (L. H. thd.)
	913177	3	NUT, jam, 1/2" NF
12	198103	1	ROD
13	198016	1	ARM, connecting
	905123	1	KEY, woodruff, #9
	916272	1	CAPSCREW, 3/8" NC x 1-1/4"
	904206	1	LOCKWASHER, 3/8"



TRANSMISSION

T-72288

ITEM	PART NO.	QTY.	DESCRIPTION
1	199218	1	TRANSMISSION ASSY. (model TAC-51-1302, specification no. N-60287) (includes items 7, 8, and 10)
	916197	12	CAPSCREW, 7/16" NC x 1-1/4"
	904207	12	LOCKWASHER, 7/16"
2	188086	1	PIN, support
	901343	2	PIN, cotter, 1/4" x 1-3/4"
3	188087	1	BAR, support
	188089	2	BUSHING support pin (not illustrated)
	915832	2	CAPSCREW, 3/4" NC x 4"
	904369	2	LOCKWASHER, 3/4"

Replaces page 106 in 260 Series A Parts Catalog 0686342-7
 Printed in U.S.A.

(Continued)

(Revised September 1972)

ADDITIONAL PUBLICATIONS AVAILABLE

FOR

MODEL 260 TRACTOR SCRAPER

(Series A)

(See NOTICE below)

<u>DESCRIPTION</u>	<u>SERIAL NO.</u>	<u>FORM NO.</u>		
		ENGLISH	ESPAÑOL (Spanish)	PORTUGUES (Portuguese)
<u>PARTS CATALOGS</u>				
Tractor Scrapper All	0686342-7			
Injection Pump				
Bosch (APE) Prior/09742	0645322-9			
Bosch (Germany) Eff/09742	0681648-2			
Athey Wagon	See NOTE			
<u>OPERATOR'S MANUAL</u>				
Tractor Scrapper All	0198543-1			
<u>SERVICE MANUALS</u>				
Engine All	0663850-6*	0668373-4	0668374-2	0668375-9
Turbocharger All	0637740-2*	0647061-1	0647062-9	0647063-7
Injection Pump				
Bosch (APE) Prior/09742	0657399-2			
Bosch (Germany) Eff/09742	0681649-0			
Injection Nozzles All	0682797-6			
Torque Converter, Transmission and Charging Pump All	0189100-1*			
Final Drive, Differential and Brakes All	0197345-2*			
Power Steering All	3104500-8*			
Hydraulic Systems. All	3100268-6*			
Electrical System All	0680006-4*			
Hitch All	3104968-7*			
Scrapper All	0197016-9*			
Service Manual, Complete (Includes manuals noted*).. All	0682502-0			

NOTE: Not available from Allis-Chalmers; order by model designation from
Athey Products Corporation, P. O. Box 669, Raleigh, N. C. 27602, U. S. A.

NOTICE

CONSULT ALLIS-CHALMERS CONSTRUCTION MACHINERY
DEALER FOR PUBLICATIONS.

SEE CONSTRUCTION MACHINERY TECHNICAL PUBLICATIONS
INDEX (FORM 0658800-8) FOR ALL AVAILABLE PUBLICATIONS.

PUBLICATIONS INDEX (FORM 0658800-8) IS AVAILABLE FREE
FROM YOUR DEALER.

IMPORTANT

All parts listed herein, which have no specific usage indicated, are applicable to all models. Those parts which are used only on specific models are so indicated.

Attaching parts such as bolts, nuts, rivets, screws, washers, etc., are indented immediately following the parts which they attach.

Parts indicated with a square (□) are also available in packaged sets. Refer to section titled "PACKAGED PARTS".

The terms "right" and "left" used throughout this parts catalog are determined by facing the direction of forward travel.

INSTRUCTIONS FOR ORDERING PARTS

Order parts from the dealer covering the local territory.

ALWAYS GIVE THE MODEL AND SERIAL NUMBER OF MACHINE. IF PARTS ARE FOR AN ASSEMBLY WHICH HAS A MODEL AND/OR SERIAL NUMBER (SUCH AS ENGINE ASSEMBLY, PUMP ASSEMBLY), ALSO INCLUDE THIS INFORMATION.

To obtain parts promptly, give part name and part number.

Give post office address, town, county and state where parts are to be shipped. Also specify whether material is to be shipped by freight, express or parcel post.

Confirm all telephone or telegraph orders in writing.

Parts for standard motor accessories such as generators and starting motors should be ordered from authorized Service Stations maintained by manufacturers of these units throughout the country.

No credit will be allowed on parts unless they are returned to the dealer from whom they were purchased; from there they will be returned, at the customer's expense, to the factory for inspection.

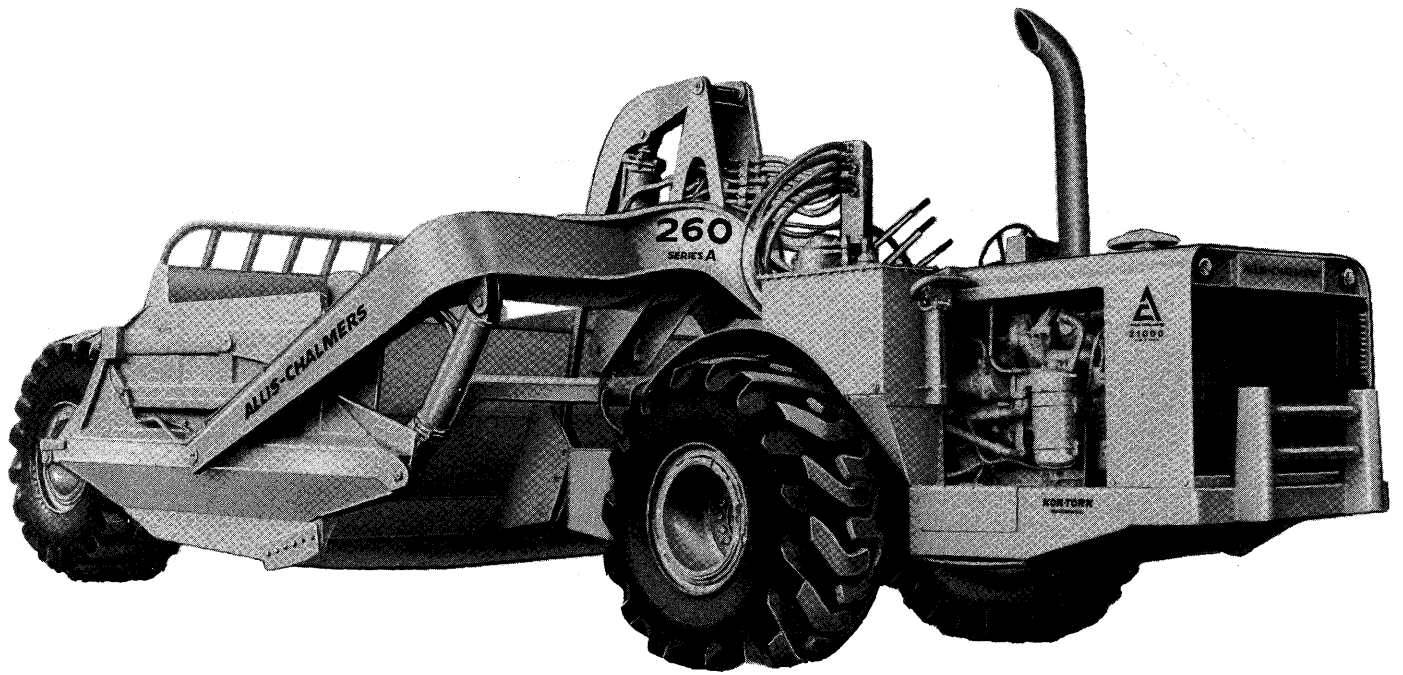
Unless claims for shortages or errors are made immediately upon receipt of goods, they will not be considered.

When broken goods are received, a full description of the damage should be made by the carrier agent on the freight bill. If this description is insisted upon, full damage can always be collected from the transportation company.

No responsibility is assumed for delay or damage to merchandise while in transit. Our responsibility ceases upon delivery of shipment to the transportation company from whom a receipt is received showing that shipment was in good condition when delivered to them; therefore, claims (if any) should be filed with the transportation company and not with Allis-Chalmers.

The right is reserved to change the construction or material of any parts where it seems desirable to do so without incurring the obligation of installing such changes on units already delivered.

The information contained herein is general in nature and is not intended for specific application purposes. Allis-Chalmers reserves the right to make changes in specifications shown herein or add improvements, at any time without notice or obligation.



260 SERIES A TRACTOR SCRAPER

T-77549

MODEL IDENTIFICATION

The models and their identifying symbols are indicated below. This symbol is stamped in front of the model serial number on each unit.

MODEL SYMBOL	ENGINE MODEL	TRANSMISSION MODEL	DESCRIPTION
T260 (Series A)	21000 Mark II	TAC - 51 - 1302	Power Shift Tractor
S260			Scraper

NOTE: Trailing units, of manufacture other than Allis-Chalmers (as Athey wagons) are also operated with the 260 Tractor. Parts information for such special tractor adaptations is contained in this catalog; for parts on trailing units themselves, consult manufacturer.

SERIAL NUMBER LOCATIONS

On all parts orders and all correspondence relative to the 260 Series A Tractor Scraper, it is necessary that the tractor and scraper serial number be given. Such major components as engine, transmission and converter, have serial numbers which should also be given to properly identify the unit and component. These will assure obtaining the correct replacement parts and/or information.

The tractor serial number is stamped on the left side of the tractor frame at the front.

The scraper serial number is stamped on the left side of the scraper bowl at the rear.

The transmission model and serial number is on the name plate on the top side of transmission.

The engine serial number is stamped on a plate located at the left rear side of the cylinder block, and is also stamped on the right hand top corner of the cylinder block.

RECORD YOUR SERIAL NUMBERS BELOW

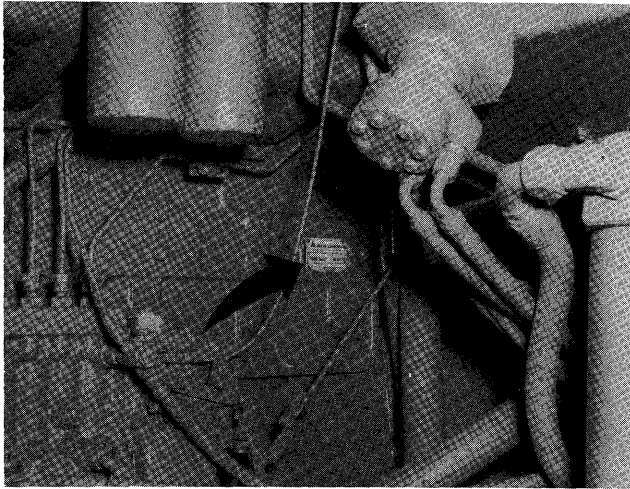
TRACTOR SERIAL NO. _____

ENGINE SERIAL NO. _____

TRANSMISSION SERIAL NO. _____

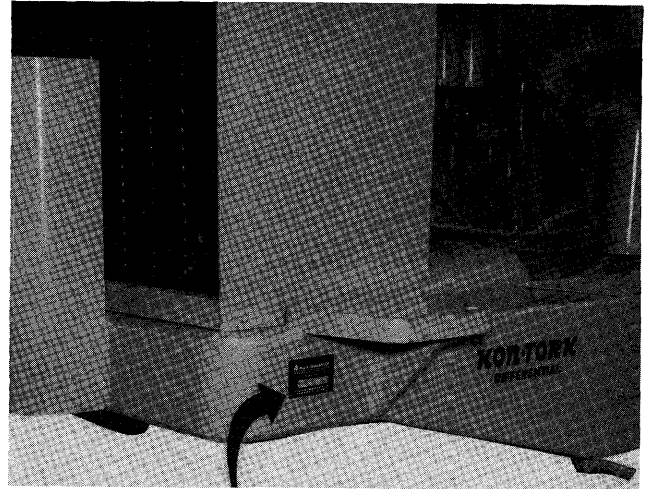
SCRAPER SERIAL NO. _____

CONVERTER SERIAL NO. _____



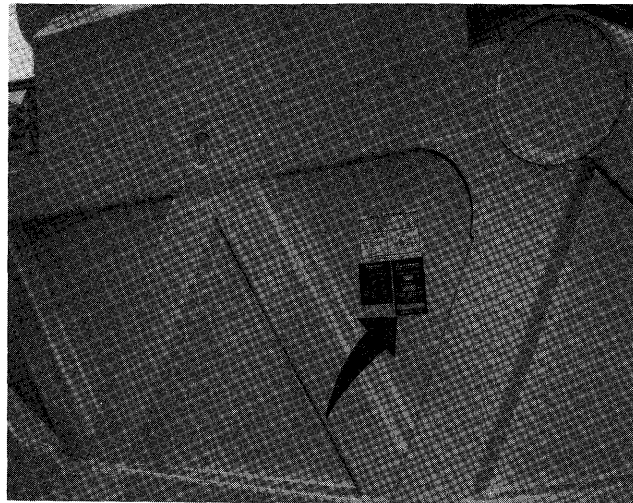
T-77531

ENGINE SERIAL NO.



T-77533

TRACTOR SERIAL NO.



SCRAPER SERIAL NO. T-77532

MODEL SERIAL NUMBER

NOTE: Effective in 1969, the model serial numbering system was changed. Under the prior system, both the Tractor and Scraper were numbered consecutively in numerals only (8001 thru 9000). Thereafter, models are identified by an 8-character combination of letters and numerals. First Tractor No. of new system is 98C09501; first Scraper No. is 59L06001

***SERIAL NUMBER** consisting of all 8 characters must always be submitted for positive identification of your machine. This Point Cannot Be Over-emphasized.

CRAWLER MODEL	*SERIAL NO.	
	PRODUCT CODE	UNIT NO.
T260 Series A (Tractor)	98C	09501
S260 Series A (Scraper)	59L	06001

ALPHABETICAL INDEX

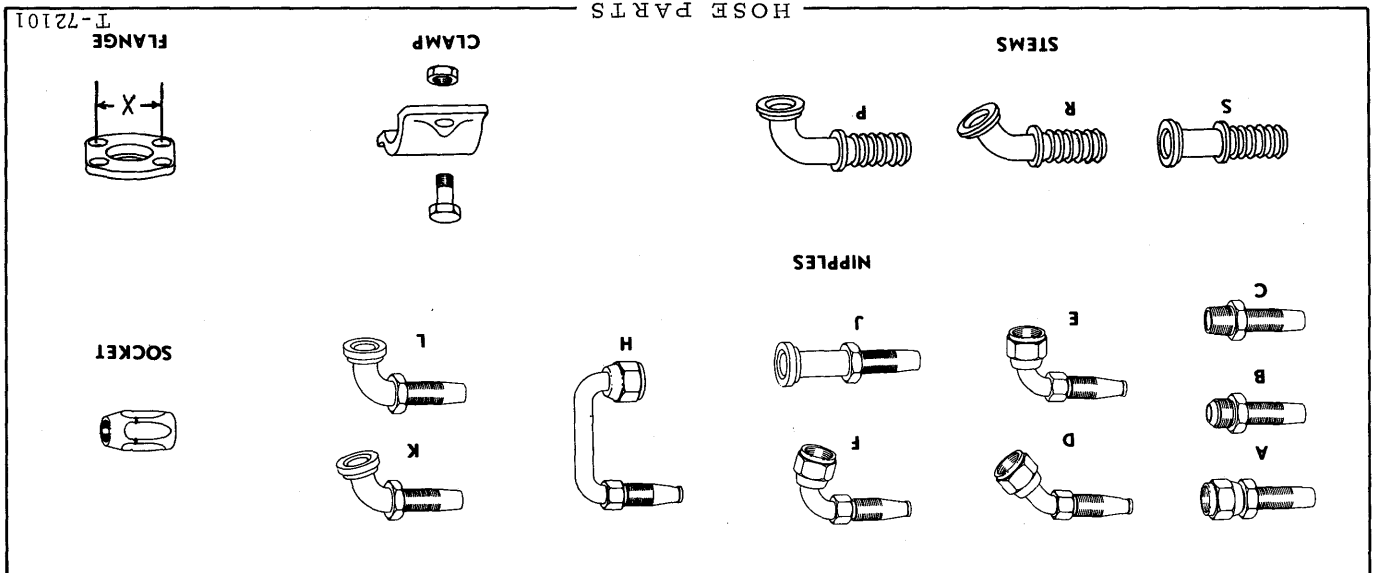
Accessory Drive	28	Engine Assembly	13
Actuator, brake	240	Ether Starting System	315
Air Cleaner.	78	Exhaust Pipe	82
Alcohol Injector Lines	222, 224	Fan	84
Apron, Scraper	293	Bracket	84
Lever.	288	Hub.	85
Athey Wagon		Fan, Defroster	305
Hydraulic Manifold Hose	278	Fenders	156
Pedestal	292	Filter, Coolant	92
Axle, Drive.	142	Filter, Engine Oil	46, 48
Axle, Idler	144	Filter, Fuel.	52, 56, 58
Axle, Scraper.	148	Filter, Hydraulic.	256
Battery	170	Filter, Transmission	134
Cover	154	Final Drive	138
Bearing, Camshaft	14	Flywheel	34
Bearing, Main	24	Frame, Engine and Gear Case.	154
Belts		Frame, Main, Scraper	298
Alternator	177	Gasket, Engine Head	18
Compressor	188	Gear, Final Drive	142
Fan.	84	Gear, Idler, Final Drive.	144
Generator	176	Gear, Spiral Bevel	138
Water Pump	97, 100	Gear Case, Tractor	154
Block, Cylinder.	14	Generator.	176
Bowl, Scraper	300	Belt	176
Bracket, Fan	84	Governor, Compressor	187
Brackets, ROPS mounting	316	Grille	153
Brake	145	Head, Cylinder	18
Drum.	146	Heater, Cab	308
Breather, Engine.	17	Heat Exchanger, Torque Converter	95
Cab	302	Tubes	111
Door	306, 307	Hitch Assembly.	243
Camshaft	26	Hood.	153
Bearing	14	Horn.	209
Camshaft, Brake	142, 148	Lines.	200
Canopy	310, 311	Hose Parts	8
Clutch Packs	116, 120, 124	Hour Meter	31
Compartment, Operators.	150	Housing, Flywheel	34
Lines.	200	Housing, Front	32
Compressor.	184	Hub, Fan	85
Belt	188	Hydraulics, Scraper	252 thru 289
Lines.	188	Hydraulics, Steering	157, 258
Connecting Rod	22	Idler, Final Drive	144
Converter, Torque	106, 108	Idler, Reverse	119
Crankshaft	24	Instrument Panel	166
Cylinder, Brake - See Rotochamber		Lever, Scraper Valve	263
Cylinder, Scraper Apron.	288	Lever, Shift.	104
Lines.	280	Light Assemblies.	179, 180, 181
Cylinder, Scraper Bowl	285	Light Assemblies, Bowl	178
Lines.	280	Light Assembly, Dash	175
Cylinder, Scraper Ejector	286	Lines, Fuel.	54, 55
Lines.	280	Linkage, Brake.	238, 240
Cylinder, Steering	282	Manifold	
Lines.	258	Exhaust	81
Differential Assembly	141	Hydraulic	276
Drum, Brake	146	Intake	80
Edges, Cutting	300	Water Inlet	94
Ejector, Scraper	294	Water Outlet.	90
Electrical System	170	Marking.	290
Elements		Moisture Ejector Lines.	218, 219
Air Cleaner	78	Nozzles, Fuel Injection.	69
Coolant Filter	92	Lines.	66, 70
Engine Fuel Filter.	52, 56, 58	Numerical Index	319
Engine Oil Filter	46, 48	Packaged Parts	10
Hydraulic Filter	256	Painting and Marking.	290
Transmission Filter.	134	Pan, Oil.	44, 45

ALPHABETICAL INDEX (Continued)

Pedal, Brake	206	Transmission	
Pedal, Throttle	161	Assembly	106
Piston	22	Housing Tubes	115
Puller, Bearing	318	Housing	112
Pump, Engine Oil	37 thru 43	Second and Fourth Clutch Pack	116
Pump, Fuel Injection	62, 64	Reverse Idler Shaft	119
Pump, Hydraulic	246, 255	Third and Fifth Clutch Pack	120
Pump, Transmission	246	First and Reverse Clutch Pack	124
Pump, Water	97, 100	Range Selector Valve	127
Radiator Assembly88	Output Group	128
Connections86	Regulator Valve	130
Regulator, Voltage	170	Turbocharger72
Reservoir, Air	190, 193, 228	Universal	137
Reservoir, Hydraulic	246, 248	Valve, Brake	206
Reverse Alarm	174	Lines	210, 212
Rocker Arms26	Valve, drain control	217, 220, 221
Rotochamber, Brake	236, 238, 240	Valve, Emergency	234
Lines	210, 212	Lines	228
Seal, Crankshaft	32, 34	Valve, exhaust18
Seat Assembly	162	Valve, hand brake	202, 204
Shaft, Reverse Idler	119	Lines	196, 197, 199
Shoes, Brake	145	Valve, intake18
Slack Adjuster, Brake	142, 148	Valve, Range Selector	127
Spring, Ejector Return	294	Valve, Regulator	130
Starter	170	Valve, Release	230
Switch, Neutral Position	165	Lines	230
Tachograph	183	Valve, Scraper	264 thru 274
Tank		Levers	263
Fuel	60	Lines	252, 276, 280
Hydraulic	246, 248	Valve, Steering	258
Thermostat	90	Lines	157, 258
Throttle Pedal	161	Linkage	282
Tools	317, 318	Valve, Tractor Protection	214
		Lines	214
		Valve Operating Mechanism26
		Vandalism Prevention Parts	312
		Wheel	146
		Wheel, Steering	157
		Windshield	150
		Wiper, windshield	314

ORIGINAL HOSE ASSEMBLY NO.	HOSE BULK (25' roll)	HOSE LENGTH (inches)	NIPPLE OR STEM Type (#1 end)	NIPPLE OR STEM Type (#2 end)	SOCKET	CLAMP	Cap screw	Nut
0196909-6	0920795-2	28-1/4	0922600-2	0920970-1	C	0920973-5		
0196910-4	0920795-2	28-1/4	0922600-2	0922600-2	B	0920973-5		
0196927-8	0920795-2	26-3/4	0923254-7	0923263-8	L	0920973-5		
0196928-6	0920795-2	71-3/4	0923254-7	0190180-0	L	0920973-5		
0196929-4	0920795-2	61-3/4	0923254-7	0190180-0	L	0920973-5		
0196930-2	0920795-2	76-1/4	0923254-7	0190179-2	L	0920973-5		
0196931-0	0920795-2	58-3/4	0923254-7	0190179-2	L	0920973-5		
0196932-8	0920795-2	68-1/4	0923254-7	0190179-2	L	0920973-5		
0197291-8	0920982-6	28-3/4	0192619-5	0923264-6	L	0920986-7		
0197292-6	0920794-5	36	0923253-9	0923258-8	K	0920972-7		
0197293-4	0919218-8	51-3/4	0920303-5	0919081-0	E	0919076-0		
0197748-7	0920730-9	17-1/2	0923274-5	0923918-7	L	0923275-2		
0197749-5	0920730-9	21-1/4	0923274-5	0923918-7	L	0923275-2		
0197877-4	0920795-2	31-3/4	0923249-7	0923254-7	J	0920973-5		
0198004-4	0920222-7	73	0921034-5	0196713-2	L	0919282-4		
0198085-3	0919196-6	111-1/2	0920301-9	0919550-4	C	0919143-8		
0198088-7	0919196-6	102	0920301-9	0919200-6	C	0919143-8		
0198104-2	0920982-6	29-1/2	0923255-4	0198105-9	K	0920986-7		
0199760-0	0920729-1	70-1/2	0925770-0	0922141-7	L	0920569-1		
0681800-9	0920794-5	33	0922833-9	0920969-3	C	0920972-7		
3100906-1	0920222-7	33-1/2	0921034-5	0925240-4	K	0919282-4		
3106307-6	0920222-7	33-1/2	0920144-3	0925240-4	K	0919282-4		
*4386238-2	0919821-9	28-1/4	0921225-9	0920513-9	E	0919820-1		
*4386770-4	0920736-6	18	0922406-4	0922514-5	E	0920509-7		
*4386771-2	0922365-2	22-1/8	0920512-1	0922207-6	H	0920509-7		
*4386772-0	0919821-9	23-1/4	0920513-9	0922208-4	H	0919820-1		
*4386773-8	0922364-5	11-3/4	0922044-3	0922044-3	E	0922042-7		

NOTE: Refer to left hand column for identity of original hose. Hose is crimped-type (fittings not re-usable) unless otherwise noted. Equivalent hose assembly may be constructed in the field from data indicated.



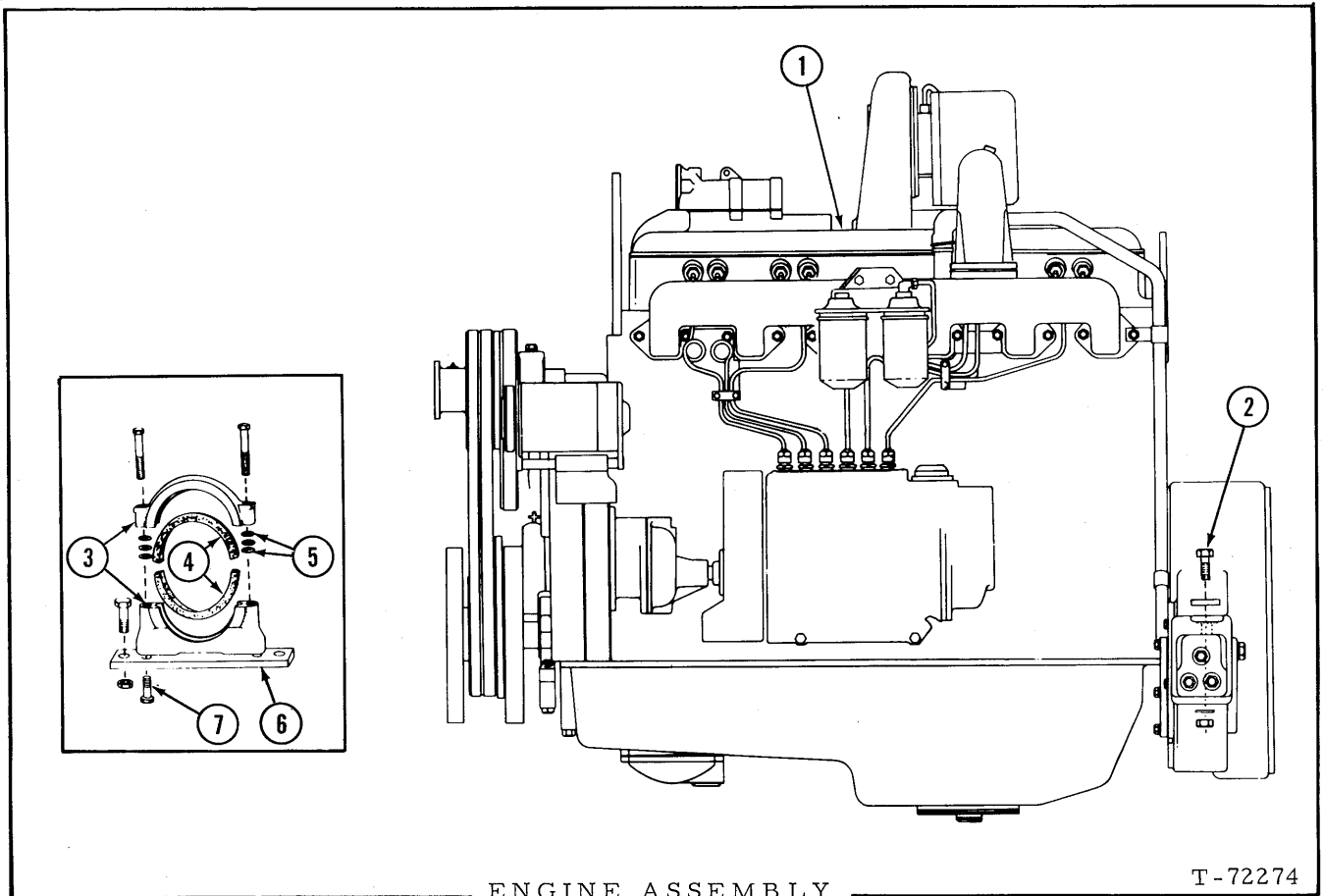
PACKAGED PARTS

PACKAGE NO.	DESCRIPTION
0198153-9	EMBLEM SET (For machines painted Allis-Chalmers yellow (See PAINTING AND MARKING)
0198152-1	EMBLEM SET (For machines painted other than Allis-Chalmers yellow (See PAINTING AND MARKING)
4387007-0	GASKET SET, turbocharger mounting (See TURBOCHARGER)
4391802-8	GASKET SET, engine, cylinder head
8	4254873-5 WASHER, rocker cover capscrew
8	4255956-7 SLEEVE, fuel line (rubber)
1	4361551-7 GASKET, air intake elbow
1	4362458-4 GASKET, by-pass tube
6	4376483-6 GASKET, water manifold
1	4376520-5 GASKET, thermostat housing cover
6	4378031-1 GASKET, nozzle
1	4386137-6 GASKET, thermostat by-pass tube
14	4387697-8 GASKET, intake and exhaust manifold
2	4389961-6 GASKET, cylinder head cover (upper)
2	4390170-1 GASKET ASSY., cylinder head (Includes Instruction sheet
1	4391707-9 GASKET, air inlet
1	4392279-8 GASKET, manifold connecting
2	4393583-2 GASKET, cylinder head cover (lower)
4394034-2	GASKET KIT, intermediate, engine cylinder block (Does not include cylinder head or oil pan gaskets)
2	0667252-1 GASKET, drain plug
8	0923379-2 O-RING, water tube
1	0923575-5 O-RING, idler pin
8	0923645-6 O-RING, injection pump line
2	0923651-4 O-RING, bonnet tube
2	0923810-6 O-RING, dowel
1	0923813-0 O-RING, idler gear pin
5	0923934-4 O-RING
1	0923935-1 O-RING, water pump flange
1	0923936-9 O-RING, cam
12	0925612-4 O-RING, water inlet manifold
2	4113897-5 GASKET, cap nut
4	4119937-3 GASKET, plugging capscrews
2	4255511-0 O-RING, heat exchanger/oil filter
2	4255513-6 O-RING, oil filter
12	4255631-6 O-RING, oil cooler
4	4255665-4 O-RING, fuel pump bracket
2	4255781-9 O-RING, heat exchanger elbow
1	4255898-1 O-RING
1	4255904-7 O-RING
1	4255912-0 O-RING, flywheel
1	4310257-3 GASKET, oil filler pipe
1	4336897-6 O-RING, flywheel housing
1	4361740-6 GASKET, idler support
1	4367090-0 GASKET, tachometer hole nut
1	4371027-6 GASKET, gear housing hole cover
2	4371160-5 GASKET, heat exchanger
1	4371289-2 GASKET, oil pan cover
3	4371345-2 GASKET, oil tube
1	4371742-0 GASKET, cover
1	4376398-6 GASKET, water pump

(Continued)

PACKAGED PARTS (Continued)

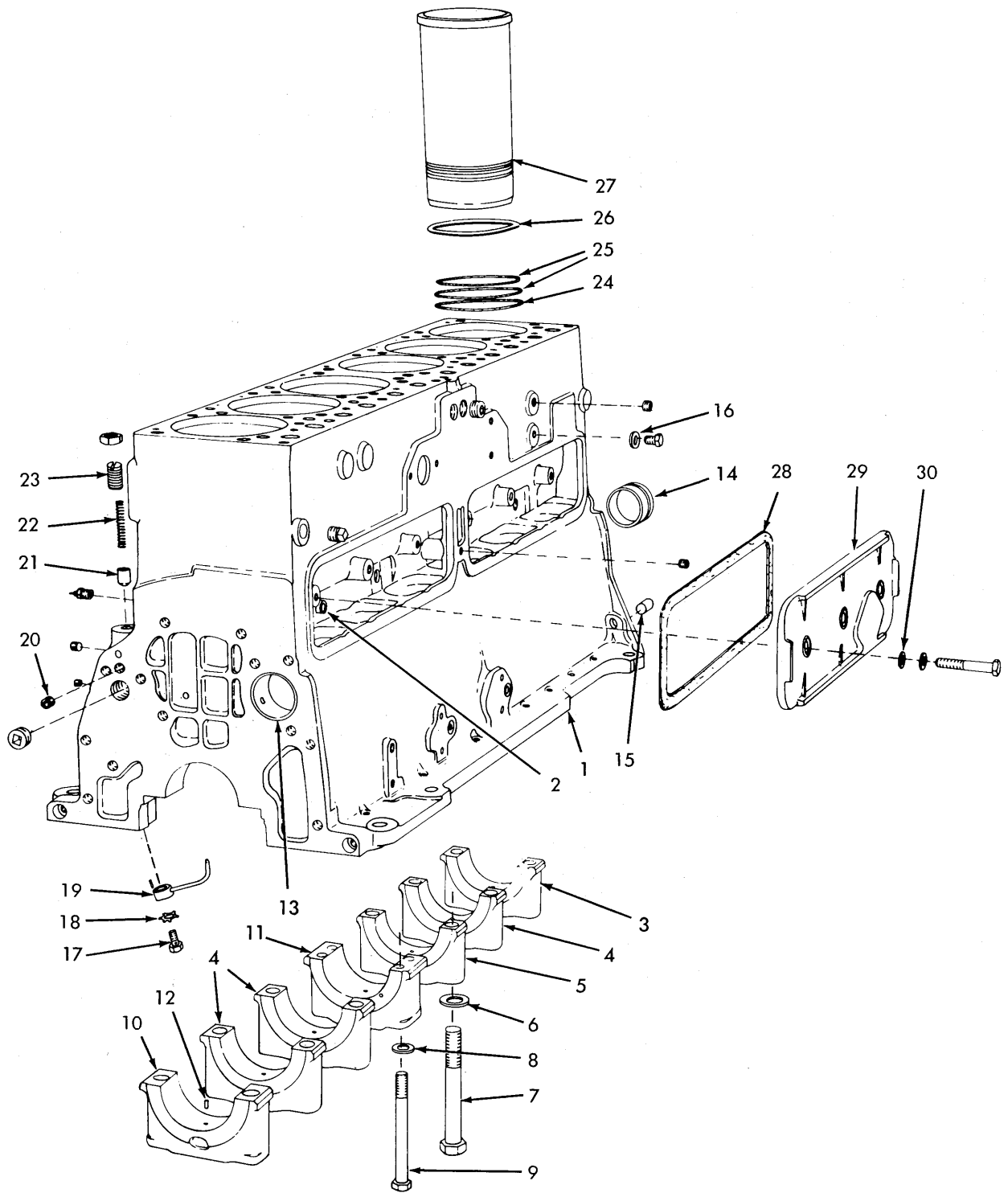
PACKAGE NO.	DESCRIPTION
4394034-2 (Cont'd)	1 4376603-9 GASKET, accessory drive
	1 4376609-6 GASKET, gear housing cover
	7 4376749-0 WASHER, push rod cover capscrew
	2 4377120-3 GASKET, push rod cover
	2 4378112-9 GASKET, lower by-pass flange
	1 4379070-8 SEAL, oil pan
	1 4385317-5 GASKET, water manifold
	1 4385320-9 GASKET, bonnet
	1 4386223-4 GASKET, bonnet
	1 4386495-8 GASKET, water and oil manifold, lower
	1 4386856-1 GASKET, heat exchanger
	1 4387525-1 GASKET, cover
	1 4389291-8 GASKET, water and oil manifold, upper
	1 4389635-6 GASKET
	1 4389676-0 GASKET, heat exchanger
	1 4389678-6 GASKET, heat exchanger
	3 4389782-6 GASKET, oil tube
	1 4390432-5 GASKET, housing cover
	4 4393359-7 GASKET, oil lines
	1 4660423-7 GASKET, oil line
	1 4660492-2 GASKET, gear housing
	1 ----- INSTRUCTION SHEET NO. 4388285
	1 ----- INSTRUCTION SHEET NO. 4388289
-----	RING SET, engine, piston (See PISTON AND CONNECTING ROD)
4393039-5	SLEEVE KIT, engine (with piston)
	2 4253749-8 RETAINER, piston pin
	1 4379178-9 RING, packing (top)
	2 4385485-0 RING, packing (2nd and 3rd)
	1 4390175-0 PIN, piston
	1 4391473-8 SLEEVE, cylinder
	1 4391487-8 PISTON
	1 4393038-7 RING SET, piston (See above)
	1 ----- INSTRUCTION SHEET NO. 4385633
	1 ----- INSTRUCTION SHEET NO. 4391083



ENGINE ASSEMBLY

T-72274

ITEM	PART NO.	QTY.	DESCRIPTION
1	4391236-9	1	ENGINE ASSY., model 21000 Mark II
NOTE: Engine includes Coolant Filter, Turbocharger, Fuel Pump, Fuel Filters, Lub. Oil Filters; but does not include Fan, Air Cleaner, Exhaust Elbow and Stack, Air Compressor, Generator, Starter, or Drive Belts.			
2	0921171-5	2	CAPSCREW, 3/4"NF x 2-3/4" (rear mounting)
	0916591-1	2	NUT, elastic stop, 3/4"NF
	0189142-3	2	WASHER
3	4393564-2	1	BRACKET (Includes Cap)
	0924694-3	2	CAPSCREW, 1/2"NC x 3"
4	4336491-8	2	LINER
5	0916009-4	10	WASHER, plain (1/32" thick - use as required)
6	0193930-5	1	BAR
	0915985-6	2	CAPSCREW, 5/8"NF x 3-1/2" (front mounting)
	0916589-5	2	NUT, elastic stop, 5/8"NF
7	0921576-5	2	CAPSCREW, 5/8"NC x 3"



CYLINDER BLOCK

T-72179-A