

2004 MANUAL TRANSMISSIONS

Removal & Installation - TSX

TRANSMISSION REMOVAL

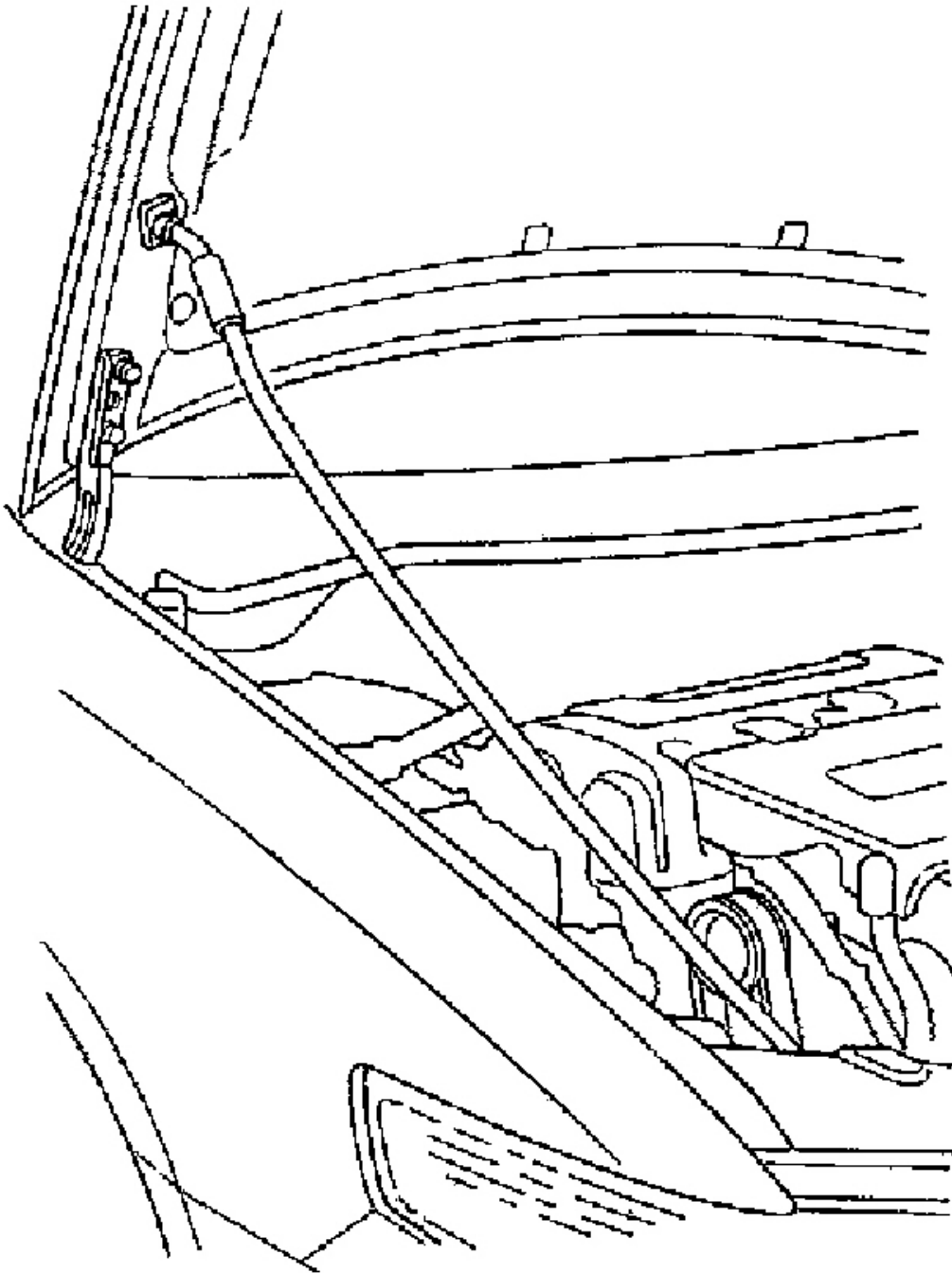
Special Tools Required:

- Engine hanger/adapter VSB02C000015*
- Engine support hanger, A & Reds AAR-T-12566*
- Subframe adapter VSB02C000016*

* Available through the Honda Tool and Equipment Program.

NOTE: Use fender covers to avoid damaging painted surfaces.

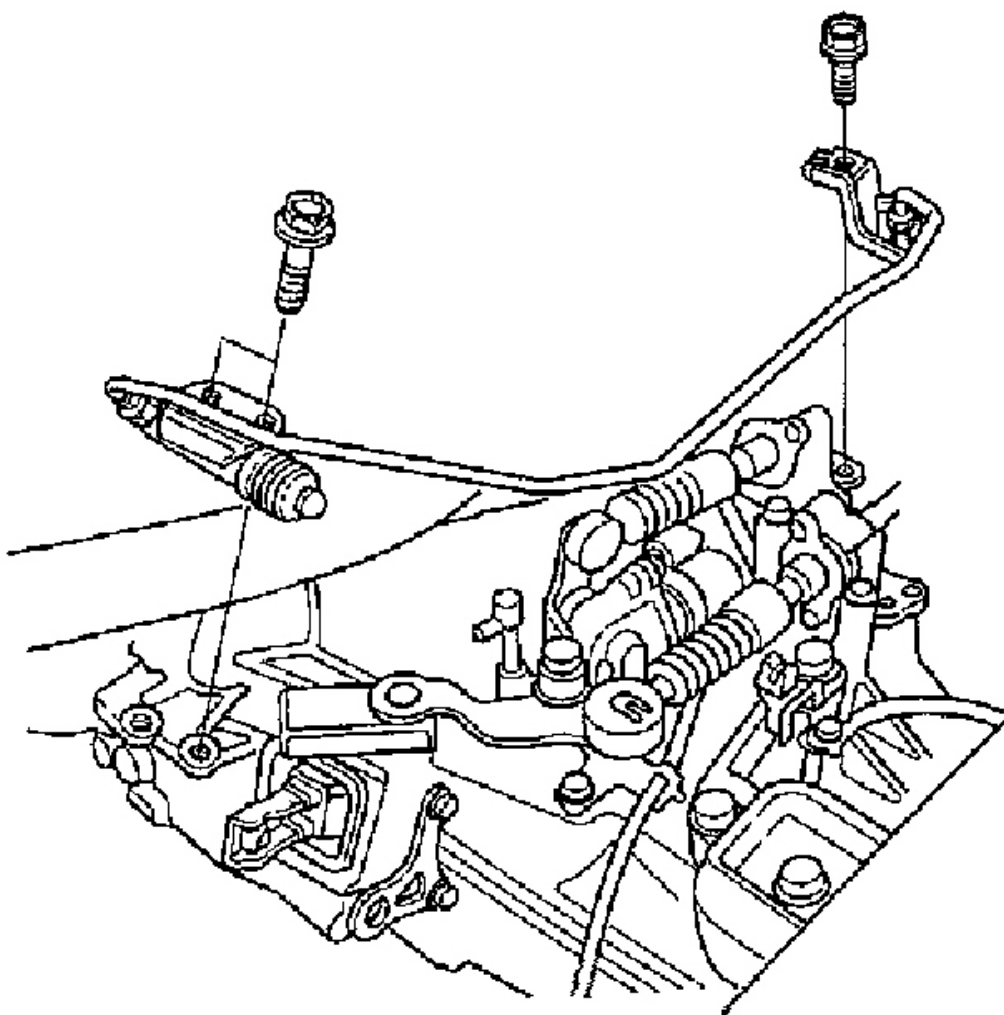
1. Secure the hood in its vertical position (support rod in the lower hole).



G01823167

Fig. 1: Secure The Hood With Support Rod In The Lower Hole

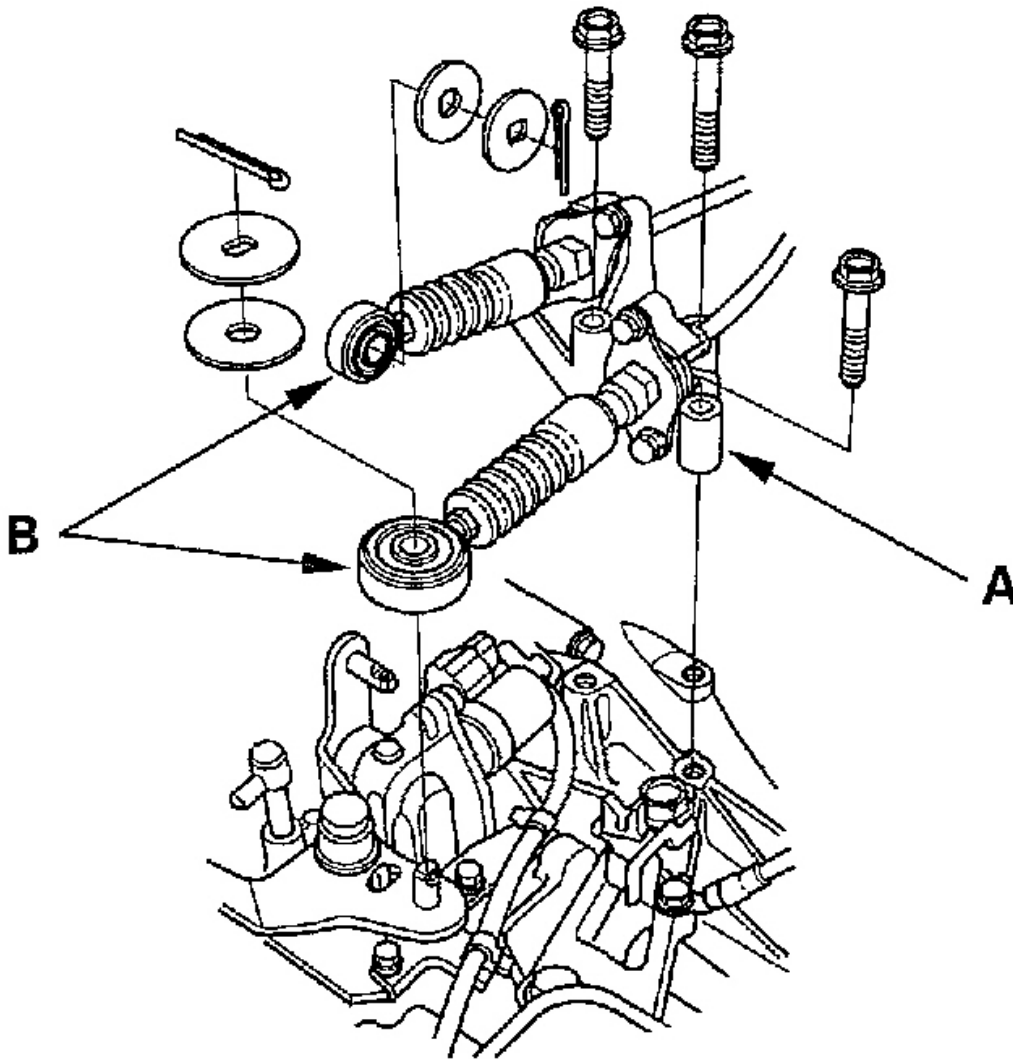
2. Make sure you have the anti-theft codes for the radio and the navigation system, then write down the frequencies for the radio's preset buttons. Disconnect the negative (-) cable first, then the positive (+) cable from the battery. Remove the battery.
3. Remove the air cleaner housing (see **AIR CLEANER REMOVAL/INSTALLATION**).
4. Remove the battery base (see step 6 of **ENGINE REMOVAL**).
5. Carefully remove the slave cylinder without bending the clutch line. Do not operate the clutch pedal once the slave cylinder has been removed.



G01823168

Fig. 2: Removing The Slave Cylinder

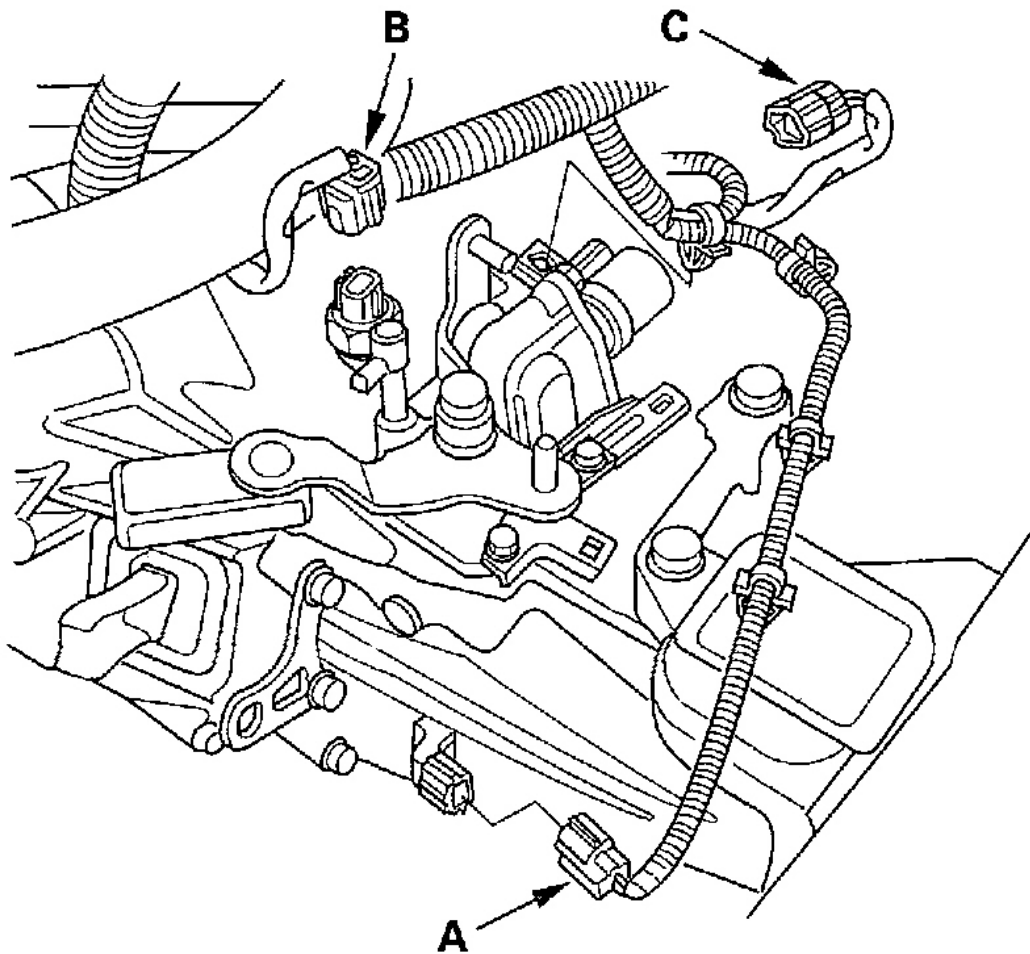
6. Remove the cable bracket (A), then disconnect the cables (B) from the top of the transmission housing. Carefully remove both cables and the bracket together to avoid bending the cables.



G01823169

Fig. 3: Removing The Cable Bracket, & Disconnecting The Cables From The Top Of The Transmission Housing

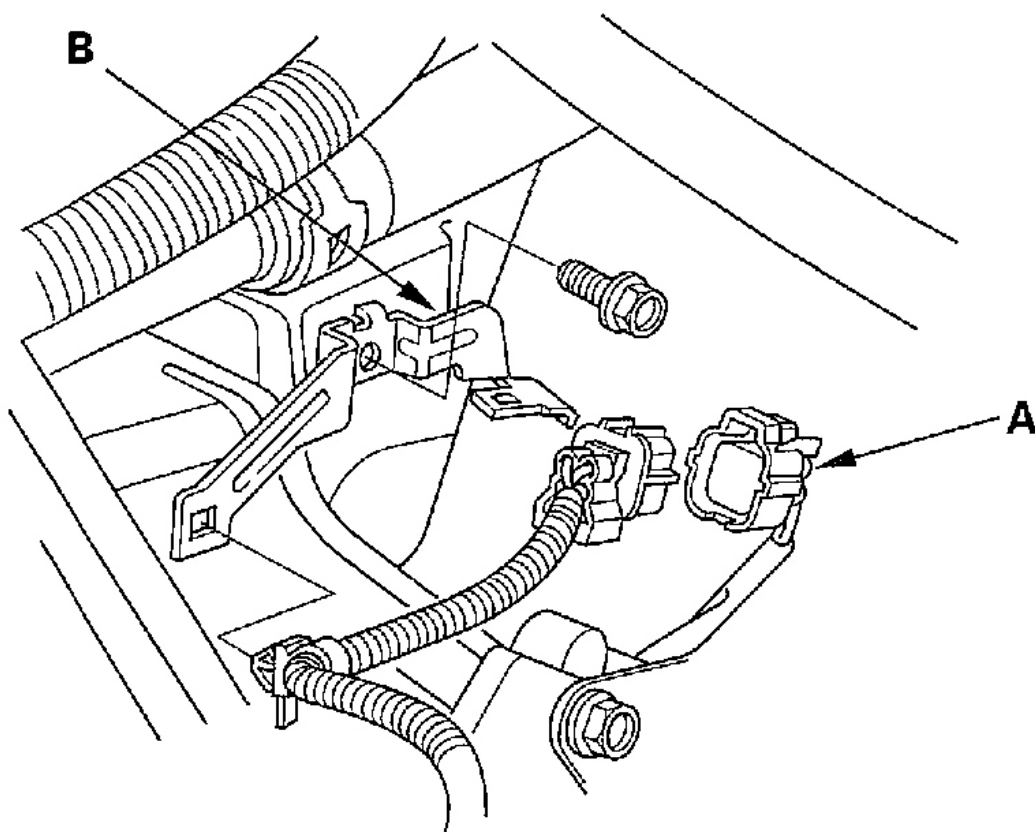
7. Disconnect the countershaft speed sensor connector (A), back-up light switch connector (B), and reverse lockout solenoid connector (C).



G01823170

Fig. 4: Disconnecting The Countershaft Speed Sensor, Back-Up Light Switch, And Reverse Lockout Solenoid Connectors

8. Disconnect the secondary heated oxygen sensor (secondary HO2S) connector (A), then remove the bracket (B).



G01823171

Fig. 5: Disconnecting The Secondary Heated Oxygen Sensor

9. Remove the engine front mount stop (A) and the engine mount front mounting bolt (B).